

Title

The developing Human Connectome Project (dHCP) automated resting-state functional processing framework for newborn infants.

Author names and affiliations

Sean P. Fitzgibbon^a, Samuel J. Harrison^{a,k}, Mark Jenkinson^a, Luke Baxter^c, Emma C. Robinson^c, Matteo Bastiani^{a,f,l}, Jelena Bozek^d, Vyacheslav Karolis^a, Lucilio Cordero Grande^c, Anthony N. Price^c, Emer Hughes^c, Antonios Makropoulos^b, Jonathan Passerat-Palmbach^b, Andreas Schuh^b, Jianliang Gao^b, Seyedeh-Rezvan Farahibozorg^a, Jonathan O'Muircheartaigh^{c,g,h}, Judit Ciarrusta^c, Camilla O'Keeffe^c, Jakki Brandon^c, Tomoki Arichi^{c,i,j}, Daniel Rueckert^b, Joseph V. Hajnal^c, A. David Edwards^c, Stephen M. Smith^a, *Eugene Duff^{a,c}, *Jesper Andersson^a

^a Wellcome Centre for Integrative Neuroimaging, FMRIB, Nuffield Department of Clinical Neurosciences, University of Oxford, UK

^b Biomedical Image Analysis Group, Department of Computing, Imperial College London, London, United Kingdom

^c Centre for the Developing Brain, Division of Imaging Sciences and Biomedical Engineering, King's College London, London, United Kingdom

^d Faculty of Electrical Engineering and Computing, University of Zagreb, Zagreb, Croatia

^e Paediatric Neuroimaging Group, Department of Paediatrics, University of Oxford, UK

^f Sir Peter Mansfield Imaging Centre, School of Medicine, University of Nottingham, UK

^g Forensic and Neurodevelopmental Sciences, Institute of Psychiatry, Psychology and Neuroscience, King's College London

^h MRC Centre for Neurodevelopmental Disorders, King's College London, London, United Kingdom

ⁱ Department of Bioengineering, Imperial College London, UK

^j Children's Neurosciences, Evelina London Children's Hospital, King's Health Partners, London, UK

^k Translational Neuromodeling Unit, University of Zurich & ETH Zurich

^l NIHR Biomedical Research Centre, University of Nottingham, UK

* These authors contributed equally

Corresponding author:

Sean Fitzgibbon

sean.fitzgibbon@ndcn.ox.ac.uk

Wellcome Centre for Integrative Neuroimaging, FMRIB, Nuffield Department of Clinical Neurosciences, University of Oxford, UK

Highlights:

1. An automated and robust pipeline to minimally pre-process highly confounded neonatal fMRI data
2. Includes integrated dynamic distortion and slice-to-volume motion correction
3. A robust multimodal registration approach which includes custom neonatal templates
4. Incorporates an automated and self-reporting QC framework to quantify data quality and identify issues for further inspection
5. Data analysis of 538 infants imaged at 26-45 weeks post-menstrual age

Keywords:

Developing Human Connectome Project

Functional MRI

Pipeline

Quality control

Connectome

Neonate

Abstract:

The developing Human Connectome Project (dHCP) aims to create a detailed 4-dimensional connectome of early life spanning 20 to 45 weeks post-menstrual age. This is being achieved through the acquisition of multi-modal MRI data from over 1000 in- and ex-utero subjects combined with the development of optimised pre-processing pipelines. In this paper we present an automated and robust pipeline to minimally pre-process highly confounded neonatal resting-state fMRI data, robustly, with low failure rates and high quality-assurance. The pipeline has been designed to specifically address the challenges that neonatal data presents including low and variable contrast and high levels of head motion. We provide a detailed description and evaluation of the pipeline which includes integrated slice-to-volume motion correction and dynamic susceptibility distortion correction, a robust multimodal registration approach, bespoke ICA-based denoising, and an automated QC framework. We assess these components on a large cohort of dHCP subjects and demonstrate that processing refinements integrated into the pipeline provide substantial reduction in movement related distortions, resulting in significant improvements in SNR, and detection of high quality RSNs from neonates.

1. Introduction

An increasing focus of neuroimaging science is building accurate models of the human brain's structural and functional architecture at the macro-scale (Kaiser, 2017) through large scale neuroimaging enterprises (Van Essen et al., 2013). The mission of the developing Human Connectome Project (dHCP, <http://www.developingconnectome.org>) is to facilitate mapping the structural and functional development of brain systems across the perinatal period (the period before and after birth). This is being achieved through the acquisition of multi-modal MRI data from over 1000 in- and ex-utero subjects of 20–45 weeks post-menstrual age (PMA), combined with the development of optimised pre-processing pipelines. The ambitious scale of the project will enable developing detailed normative models of the perinatal connectome. The raw and processed data from the project, along with genetic, clinical and developmental information (Hughes et al., 2017), will be made publicly available via a series of data releases.

As the human infant enters the world, core functional neural systems are rapidly developing to provide essential functional capabilities. Characterisation of the perinatal brain using fMRI can provide insights into the relative developmental trajectories of brain systems during this crucial period of development (Cusack et al., 2017). FMRI has been used to characterise the neural activity associated with the sensorimotor systems (Arichi et al., 2010), olfaction (Arichi et al., 2013), and visual (Deen et al., 2017), auditory (Anderson et al., 2001), vocal (Dehaene-Lambertz et al., 2002), and emotional perception (Blasi et al., 2011; Graham et al., 2013). However, whilst task-based studies are informative, they are difficult to perform in young, pre-verbal infants. Studies of spontaneous brain activity are ideally suited to the perinatal period and can provide an overall view of the spatial and temporal organisation of functional systems and their maturation. Using this approach, a number of studies have explored the emergence of the resting-state functional networks (RSNs) in infants (Fransson et al., 2007; Lin et al., 2008; Liu et al., 2008). These RSNs are found to be emerging in the preterm period and are largely present at the age of normal birth (40 weeks PMA), (Doria et al., 2010; Fransson et al., 2007; Gao et al., 2015; Smyser et al., 2010), increasing in strength over the first year of life (Damaraju et al., 2014).

Acquisition, pre-processing, and analysing MRI data from the fetal and neonatal population presents unique challenges as the tissue composition, anatomy, and function undergo rapid changes during the perinatal period and markedly differ from those in the adult brain (Ajayi-Obe et al., 2000; Dubois et al., 2014; Gilmore et al., 2012; Inder et al., 1999; Kapellou et al., 2006). These differences demand re-evaluation of established pipelines (Cusack et al., 2017; Mongerson et al., 2017; Smyser et al., 2016). Changes in tissue composition, due to processes such as myelination, and neural and vascular pruning (Dubois et al., 2014; Kozberg and Hillman, 2016a) affect imaging contrast (Goksan et al., 2017; Rivkin et al., 2004). These changes require bespoke developmental structural templates (Kuklisova-Murgasova et al., 2011; Schuh et al., 2018; Shi et al., 2018) and optimised registration techniques (Deen et al., 2017; Goksan et al., 2015). Care is required to ensure that the effects of changing relative voxel resolution and SNR on analyses are ameliorated and monitored (Cusack et al., 2017; Gao et al., 2015). Infant brain hemodynamics differ from adults, and can show substantial changes over the perinatal period (Arichi et al., 2012; Cornelissen et al., 2013; Kozberg and Hillman, 2016b). Importantly, levels of head motion over extended fMRI scans are typically high and differ in nature from adults (Cusack et al., 2017; Deen et al., 2017; Satterthwaite et al., 2012; Smyser et al., 2010). As motion and pulsatile artefacts can have profound effects on measures of resting-state connectivity, great care with motion and distortion correction is required in the neonate (Deen et al., 2017; Power et al., 2012).

A major focus of the dHCP project is therefore the advancement of acquisition and analysis protocols optimised for the infant brain (Bastiani et al., 2018; Bozek et al., 2018; Hughes et al., 2017; Makropoulos et al., 2018). The present report provides a detailed description of the dHCP resting-state functional MRI (rfMRI) pre-processing pipeline for neonates. The pipeline is inspired by the Human Connectome Project (HCP) minimal pre-processing pipelines (Glasser et al., 2013) and the FSL FEAT pipeline (Jenkinson et al., 2012) for adults; however it is designed to specifically address the challenges that neonatal data present. Each stage of the pipeline has been assessed and refined to ensure a high level of performance and reliability. The pipeline includes integrated dynamic distortion and motion correction, a robust multimodal registration approach, bespoke ICA-based denoising, and an automated QC framework. We assess these components, showing results from an initial cohort of dHCP subjects. The processed data from these pipelines are currently available for download. We apply PROFUMO (Harrison et al., 2015), a Bayesian group component decomposition algorithm (with a customised neonatal HRF prior), to demonstrate high quality RSNs from these data. A companion paper (Baxter et al., 2019) assesses the pipeline, applying it to a stimulus response dataset. In order to present the clearest description of the pipeline stages throughout the paper, we do not separate out Methods and Results sections, but intermix descriptions of methods, their assessment procedures and results.

2. Subjects and fMRI acquisition

2.1. Subjects

MR images were acquired as a part of the dHCP which was approved by the National Research Ethics Committee and informed written consent given by the parents of all participants.

Data from two cohorts of dHCP subjects are used in this paper, referred to as dHCP-538 and dHCP-40. The dHCP-538 is a large cohort that comprises 538 scans and is used to evaluate overall performance of the dHCP fMRI pipeline, as well as to assess most processing stages. The dHCP-40 is a smaller subset that comprised 40 scans and is used to specifically contrast and evaluate the more computationally demanding motion and distortion correction algorithms (see Section 3.4).

The dHCP-538 cohort comprises 538 scans that passed upstream (pre-fMRI pipeline) QC, and had been processed with the dHCP fMRI pipeline as of the time of writing. These 538 scans were obtained from 422 subjects scanned once and 58 subjects scanned twice (480 subjects in total). The first scan was pre-term, <37 weeks PMA, and second scan was term equivalent age. The dHCP-538 contains 215 females and 265 males (480 subjects in total), and has a mean PMA at scan of 39.81 weeks ($\sigma=3.36$). This cohort is a superset of the 1st (2017) and 2nd (2019) dHCP public data releases. The dHCP-40 scans are from 40 subjects (all scanned once) that were released in the 1st dHCP data release, in 2017. The dHCP-40 contains 15 females and 25 males has a mean PMA at scan of 39.81 weeks ($\sigma=2.17$). The distribution of age at scan for both cohorts is presented in Figure 1

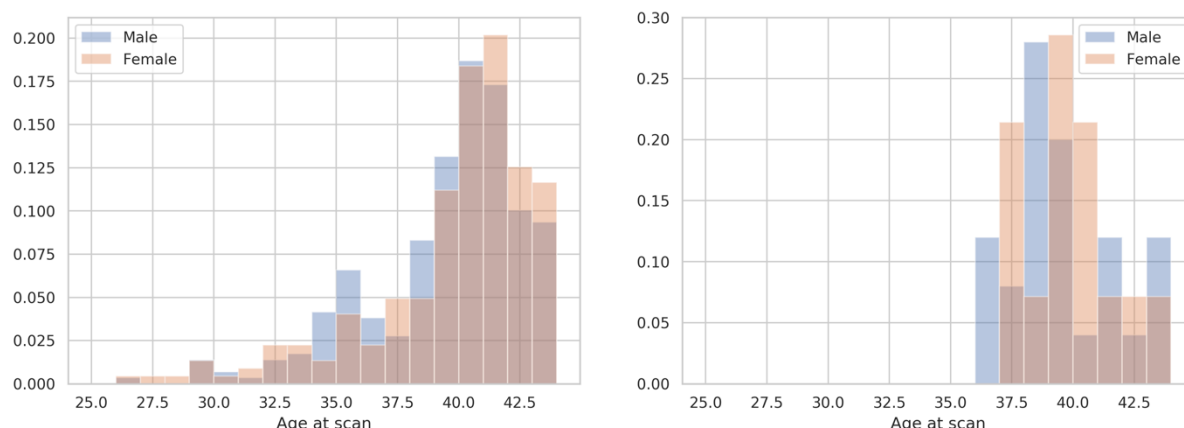


Figure 1. Distribution of post-menstrual age at scan (weeks) for the dHCP-538 (left) and dHCP-40 (right) cohorts.

2.2. Acquisition protocol summary

All data were acquired on a 3T Philips Achieva with a dedicated neonatal imaging system including a neonatal 32-channel phased-array head coil, sited within the neonatal intensive care unit at the Evelina London Children's Hospital (Hughes et al., 2017). Anatomical images (T1w and T2w), resting-state functional (rfMRI) and diffusion acquisitions were acquired without sedation, with a total examination time of 63mins.

Anatomical acquisition and pre-processing: T2w (TR=12s; TE=156ms; SENSE factor: axial=2.11, sagittal=2.58) and inversion recovery T1w (TR=4795ms; TI=1740ms; TE=8.7ms; SENSE factor: axial=2.27, sagittal=2.66) multi-slice fast spin-echo images were each acquired in sagittal and axial slice stacks with in-plane resolution $0.8 \times 0.8 \text{ mm}^2$ and 1.6mm slices overlapped by 0.8mm. Both T2w and T1w images were reconstructed using a dedicated neonatal motion correction algorithm. Retrospective motion-corrected reconstruction (Cordero-Grande et al., 2018) and integration of the information from both acquired orientations (Kuklisova-Murgasova et al., 2012) were used to obtain 0.8 mm isotropic T2w and T1w volumes with significantly reduced motion artefacts. Anatomical pre-processing of the T2w and T1w images was performed using the dHCP structural processing pipeline (Makropoulos et al., 2018). The fMRI pipeline described in this paper specifically requires the bias corrected T2w image in native space, the bias corrected T1w image sampled to T2w native space, and the tissue segmentation (9 labels). The structural pipeline outputs used by this were pre-processed with dHCP structural pipeline version 1.1 (Makropoulos et al., 2018).

rfMRI: High temporal resolution multiband EPI (TE=38ms; TR=392ms; MB factor=9x; 2.15mm isotropic) specifically developed for neonates (Price et al., 2015) was acquired for 15 minutes. No in-plane acceleration or partial Fourier was used. Single-band EPI reference (sbref) scans were also acquired with bandwidth-matched readout, along with additional spin-echo EPI acquisitions with 4xAP and 4xPA phase-encoding directions. Reconstructions follow the extended SENSE framework (Zhu et al., 2016) with sensitivity maps computed from the matched single-band data. Field maps were obtained from an interleaved (dual TE) spoiled gradient-echo sequence (TR=10ms; TE1=4.6ms; TE2=6.9ms; flip angle=10°; 3mm isotropic in-plane resolution, 6mm slice thickness). Phase wraps were resolved by solving a Poisson's equation (Ghiglia and Romero, 1994).

3. Pre-processing pipeline

3.1. Pipeline overview

The dHCP fMRI pipeline is inspired by the HCP minimal pre-processing pipelines (Glasser et al., 2013) and the FSL FEAT pipeline (Jenkinson et al., 2012) for adults; however it is designed to specifically address the challenges that neonatal data presents. These challenges and their solutions are detailed throughout the paper.

The goal of the pipeline is to generate high-quality minimally pre-processed rfMRI data for open-release to the neuroimaging community. The motivation for “minimal” pre-processing is to ensure that the scientific community will not be restricted in the subsequent analysis that they can perform on the data. Therefore, in building the pipeline we have restricted ourselves to the pre-processing steps that we consider absolutely crucial for the widest possible range of subsequent analyses.

The inputs to the pipeline are the raw multi-band EPI functional (func), single-band EPI reference (sbref), and spin-echo EPI with opposing phase-encode directions, as well as the dHCP structural pipeline pre-processed outputs: bias corrected T2w structural image (struct), bias corrected T1w image aligned with the T2w, and the T2w discrete segmentation (dseg).

The primary output is the minimally pre-processed 4D functional image which is motion corrected, distortion corrected, high-pass filtered and denoised. The secondary outputs are transforms to align the pre-processed functional images with the structural (T2w) and template (atlas) spaces.

A schematic of the dHCP fMRI pipeline is presented in Figure 2. The main pre-processing stages of the pipeline are:

1. Fieldmap pre-processing: estimate the susceptibility distortion field and align it with the functional data
2. Registration: align all images with the native T2 space and the neonatal atlas space
3. Susceptibility and motion correction: Perform slice-to-volume motion correction and dynamic susceptibility distortion correction, and estimate motion nuisance regressors
4. Denoising: Estimate artefact nuisance regressors and regress all nuisance regressors from the functional data.

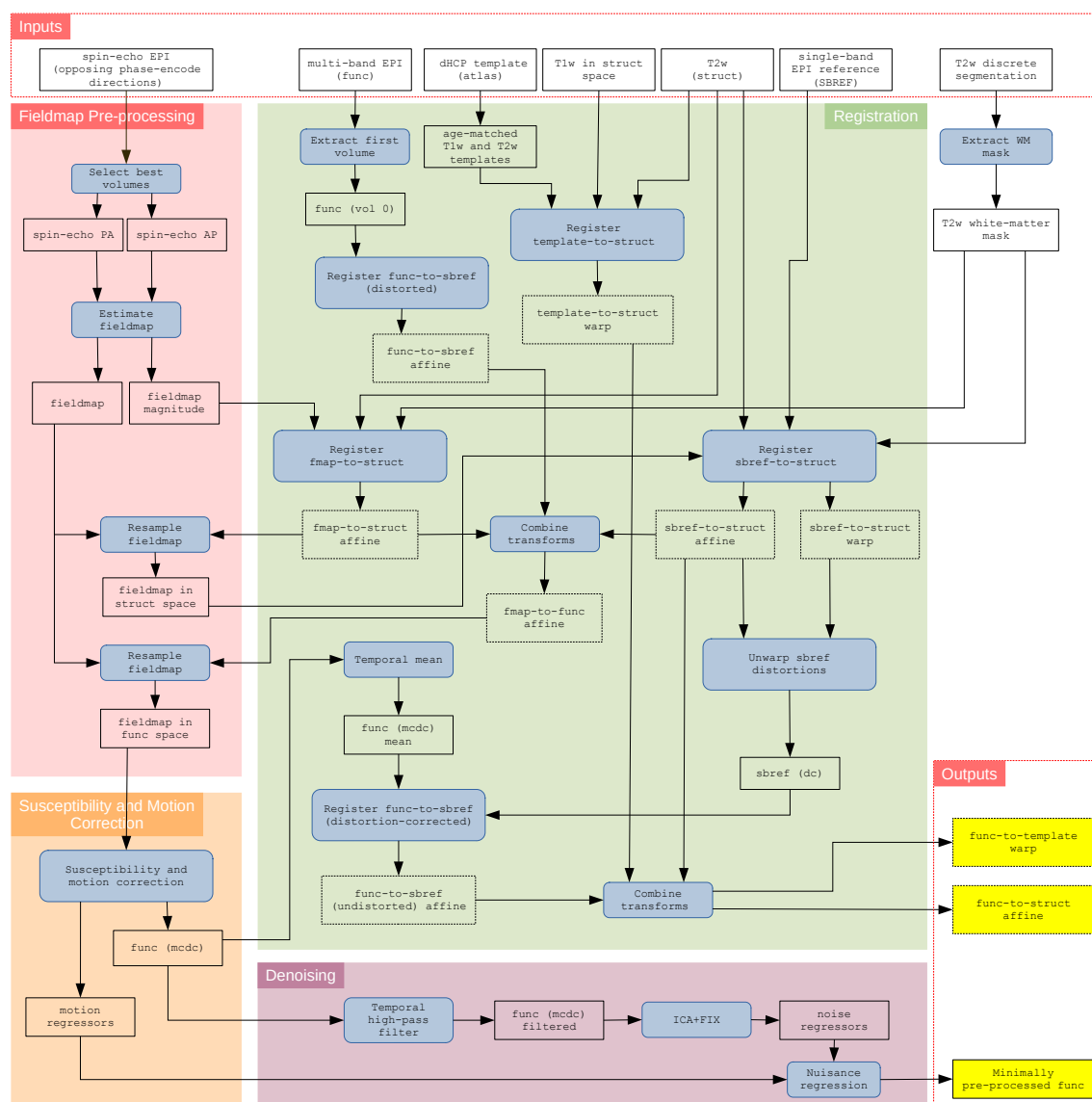


Figure 2. Schematic of the dHCP fMRI neonatal pre-processing pipeline. The schematic is segregated into the 4 main conceptual processing stages by coloured background; fieldmap pre-processing (red), susceptibility and motion correction (orange), registration (green), and denoising (purple). Inputs to the pipeline are grouped in the top row, and the main pipeline outputs are grouped in the lower right. Blue filled rectangles with rounded corners indicate processing steps, whilst black rectangles (with no fill) represent data. (dc) = distortion corrected; (mcdc) = motion and distortion corrected.

3.2. Fieldmap pre-processing

The EPI sequence is sensitive to field inhomogeneities caused by differences in magnetic susceptibility across the infant's head. This results in distortions in the image in the phase-encode (PE) direction, particularly at tissue interfaces. However, if the susceptibility-induced off-resonance field is known, these distortions are predictable and can be corrected.

The dHCP functional pipeline uses FSL TOPUP (Andersson et al., 2003) to estimate the susceptibility-induced off-resonance field from the spin-echo EPI with opposing phase-encoding directions, and converts that to a voxel displacement field to correct the EPI distortions. The input to TOPUP is two volumes of the spin-echo EPI for each phase-encoding direction. These volumes will have different distortions because of the differing PE

directions, so TOPUP uses an iterative process to estimate an off-resonance field that minimises the distortion corrected difference between the two images.

The dHCP spin-echo EPI has 8 volumes with 2 PE directions (4 x AP, 4 x PA). Any movement of the subject during acquisition results in striping artefact in the PE direction (see Figure 3). The two-best spin-echo EPI volumes (1 per PE direction) are selected as inputs to TOPUP. Here, "best" is defined as the smoothest over the z-dimension, which avoids motion artefact characterised by intensity differences between slices, a characteristic "stripy" appearance. This z-smoothness metric is obtained per volume by calculating the voxel-wise standard deviation of the slice-to-slice difference in the z-dimension and then selecting the minimum standard deviation per volume.

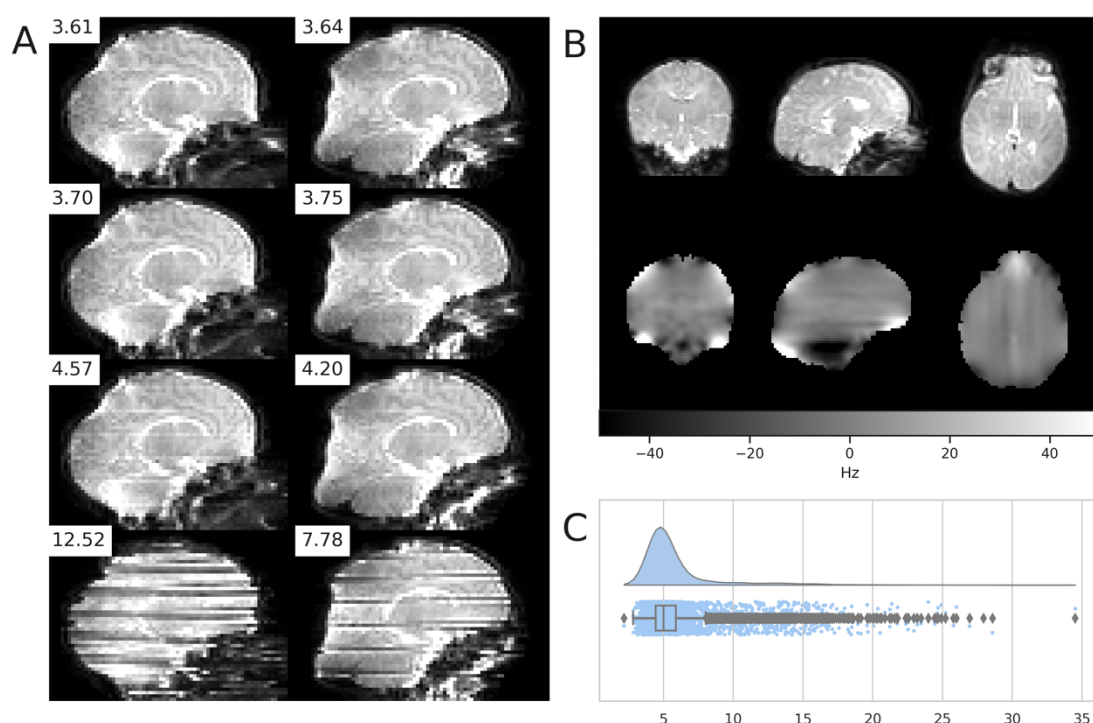


Figure 3. (A) Eight volumes of the spin-echo EPI from a single subject with AP (left) and PA (right) phase encode directions. Z-smoothness scores are presented with each volume. The two volumes in the last row have stereotyped striping artefact due to subject movement, resulting in higher z-smoothness scores. The two volumes in the first row were selected as the two "best" images based on z-smoothness. (B) Motion and distortion corrected spin-echo EPI (upper) and estimated susceptibility-induced off-resonance field (lower) derived from the spin-echo EPI in (A) using FSL TOPUP. (C) Distribution of z-smoothness across all subjects ($N=538$).

The method described above worked well for selecting the best spin-echo EPI volume pair, but it was difficult to find a threshold to determine if this pair was "good enough". It was therefore combined with visual inspection, and 12.7% (75 of 590) were visually identified as having significant movement contamination in all of the volumes for the given subject. In this circumstance, the fall-back procedure was to use the dual-echo-time-derived fieldmap instead of the spin-echo-EPI-derived fieldmap. Where possible, the spin-echo-EPI-derived fieldmap was used in preference to the dual-echo-time-derived fieldmap due to higher anatomical contrast in the magnitude image allowing more reliable registration to the structural T2w image (see Figure 4). Furthermore, the lack of contrast in the dual-echo-time-derived fieldmap magnitude meant that it was often impossible to adequately judge the quality of the registration.

To ensure that the dual-echo-time and spin-echo-EPI derived fieldmaps could be used interchangeably, we evaluated the similarity between the two. For each subject the spin-echo-EPI and dual-echo-time fieldmaps were resampled to the native functional space and then converted to a voxel displacement/shift map using FSL FUGUE. The shift maps were then masked by an eroded brain mask, to avoid edge effects as a consequence of registration misalignment. Figure 4 presents an example dual-echo-time and spin-echo-EPI derived fieldmap from a single subject, as well as the distribution of voxel displacements for all in-brain voxels from 409 subjects that had good quality dual-echo-time and spin-echo-EPI derived fieldmaps. The single-subject fieldmaps look qualitatively similar, although the dual-echo-time-derived fieldmap appears smoother and the spin-echo-EPI-derived fieldmap appears to have greater values. This is supported by the voxel displacement distribution where the spin-echo-EPI-derived fieldmap has a slightly greater mean voxel displacement and longer tails than the dual-echo-time-derived fieldmap. Two factors likely contribute to this difference, 1) the dual-echo-time fieldmap was acquired at lower resolution than the spin-echo-EPI (3x3x6mm and 2.15mm isotropic respectively), and 2) the dual-echo-time-derived fieldmap was low-pass filtered as part of the reconstruction process. Furthermore, the distribution of the voxel-wise difference between the dual-echo-time and spin-echo-EPI displacement/shift maps shows that 95% of voxels differ by less than 1 voxel shift and 99% by less than two voxels. We also inspected the distribution of spatial correlation between dual-echo-time and spin-echo-EPI derived fieldmaps across subjects, and observed good correspondence with 75% (i.e., 25th percentile) of subjects showing correlation > 0.6 . Given that the ground truth is unknown and that both the dual-echo-time and spin-echo-EPI derived fieldmaps are qualitatively and quantitatively similar, we felt justified in using the dual-echo-time-derived fieldmap as a back-up in cases where the spin-echo-EPI-derived was excessively contaminated by movement.

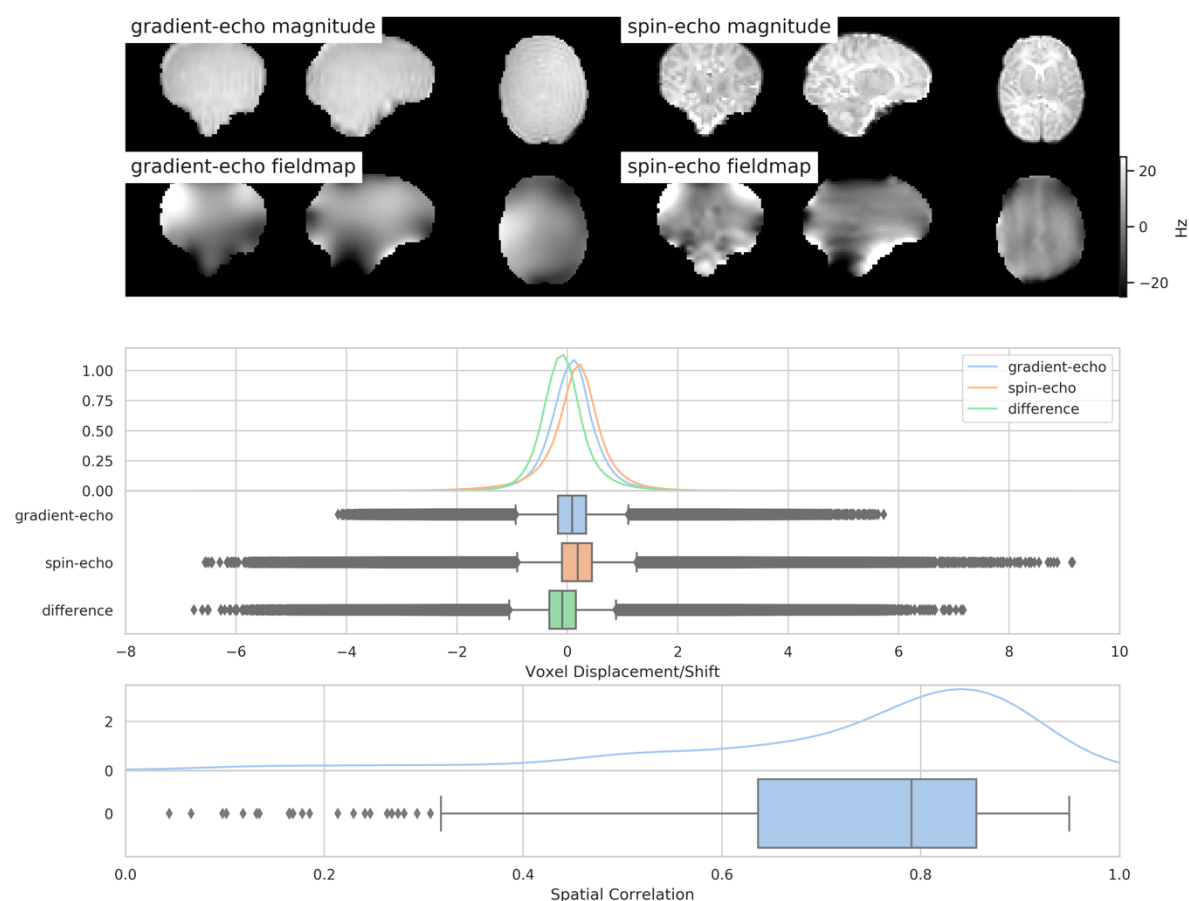


Figure 4. Upper: exemplar gradient-echo and spin-echo derived fieldmaps and magnitude from a single-subject. The spatial correlation of the two fieldmaps is 0.71. Middle: distribution of voxel displacement/shift and the voxel-wise difference for in-brain voxels from 409 subjects. Lower: distribution of spatial correlation between gradient-echo and spin-echo fieldmaps from 409 subjects.

3.3. Registration to native structural and group template space

There are two main target volumetric alignment spaces within the dHCP fMRI pipeline (see Table 1); 1) the within-subject structural space defined as the subject's native T2w space, and 2) the between-subject group standard space defined as the 40-week template from the dHCP volumetric atlas (Schuh et al., 2018). We refer to these spaces as **structural** and **template** respectively.

The brain is undergoing rapid developmental changes during the perinatal period, that require explicit consideration when registering to these spaces. Specifically,

1. The myelination of the white matter is still maturing, resulting in inversion of T1w/T2w MRI contrast when compared to adult brain scans. The impact of this inhomogeneous myelination can be mitigated by using the T2w image as the structural target space, as opposed to the T1w which is more typical in adult cohorts. Furthermore, where possible we use the BBR cost-function for intra-subject registrations, which only samples the image intensity along the high-contrast GM/WM boundary to create an intensity gradient, and is more resistant to the inhomogeneous myelination than other registration cost functions that uniformly sample the whole image.
2. The brain increases greatly in both size and gyrification during the perinatal period, which makes it challenging to define an unbiased common template space for group

analyses. Therefore, we use a bespoke developmental atlas developed using dHCP data (Schuh et al., 2018)(see Figure 7). The dHCP volumetric atlas contains T1w/T2w volumetric templates per week from 36-43 weeks PMA. We have augmented it with week-to-week nonlinear transforms estimated using a diffeomorphic multi-modal (T1w/T2w) registration (ANTs SyN) (Avants et al., 2008).

An additional registration challenge is that the dHCP uses a fast-multi-band EPI sequence which is advantageous with regard to minimising the impact of motion (see section 3.4), but which results in poorer tissue contrast. We mitigate this by using a single-band reference image (sbref) as an intermediate registration target, as per the adult HCP pre-processing pipelines (Glasser et al., 2013).

Another consideration when developing the registration protocol was to ensure reliability across a large cohort so that we could minimise manual intervention. We found empirically that BBR was more robust than other registration cost functions. We attribute this to the fact that BBR only samples the image along the more reliable high-contrast WM/GM boundary and is therefore less susceptible to image defects.

Table 1. Spaces and transforms used in the dHCP neonatal fMRI pipeline. Superscript (-1) refers to the inverse of the transform.

Spaces		
functional (func)	Native multiband EPI space	
sbref	Native single-band EPI reference space	
structural (struct)	Native T2w space	
fieldmap (fmap)	Derived fieldmap space	
template	dHCP 40-week template space	
Primary Registrations		Degrees of freedom
(a)	fieldmap-to-structural	rigid
(b)	sbref-to-structural	rigid
(c)	functional-to-sbref (distorted)	rigid
(d)	functional-to-sbref (undistorted)	rigid
(e)	template-to-structural	nonlinear
Composite Registrations		
(a) \oplus (b) ⁻¹ \oplus (c) ⁻¹	fieldmap-to-functional	rigid
(d) \oplus (b)	functional-to-structural (undistorted)	rigid
(d) \oplus (b) \oplus (e) ⁻¹	functional-to-template (undistorted)	nonlinear

To achieve alignment to structural and template spaces we perform five primary registrations (see Table 1): (1) fieldmap-to-structural, (2) sbref-to-structural, (3) functional-to-sbref (distorted), (4) functional-to-sbref (distortion-corrected), and (5) template-to-structural. From these five primary registrations, a variety of composite alignments can be calculated, most importantly: (1) fieldmap-to-functional, (2) functional-to-structural (undistorted), and (3) functional-to-template (undistorted). Further detail on these registration steps is presented in Supplementary Section 9.1.

Registration quality was assessed on the dHCP-538 dataset for each of the primary registrations by evaluating the similarity of the source (moving) image (re-sampled to reference space) and the reference (fixed) image. Normalised mutual information (NMI) was used as a metric of similarity (see Table 2).

The distribution of the NMI for each of the primary registration steps is presented in Figure 5. All the distributions appear unimodal and there are very few outliers on the lower tail (i.e., less similar). The pipeline flags these outliers for manual investigation. Furthermore, these registrations were also manually visually checked.

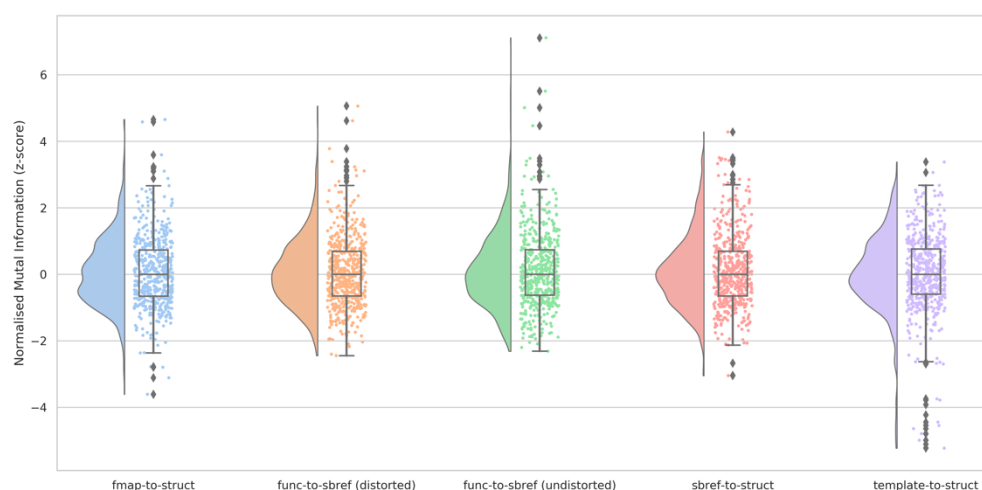


Figure 5. Distribution of the z-scored normalised mutual information between the source image and the reference image (both in reference space) for each of the primary registration stages fieldmap-to-structural, functional-to-sbref (distorted), functional-to-sbref (undistorted), sbref-to-structural, and template-to-structural. More positive NMI z-scores indicate more similarity and more negative NMI z-scores indicate less similarity.

Figure 6 presents example representative alignments of the fieldmap-to-structural, the sbref-to-structural and the standard-to-structural registrations, at differing levels of quality as quantified by the NMI similarity metric. We selected the 5th, 50th and 95th percentile of NMI distribution, with the 5th representing the lower-end of alignment quality (whilst excluding outliers). The 5th percentile fieldmap in this figure is a dual-echo-time-derived fieldmap magnitude and the lack of tissue contrast is clear; this not only makes registration to the structural space difficult, but also makes it hard to judge the quality of the registration. At the 50th and 95th percentiles, the fieldmap magnitude images are spin-echo-EPI-derived and have good tissue contrast and alignment to the structural space. The GM/WM boundary of the sbref-to-structural qualitatively appears to align well at all three percentiles; however, at the 5th percentile there are clear anterior distortions which would impact the quantitative assessment of registration quality. Given that the sbref has been distortion corrected, we conclude that these distortions are irrecoverable signal loss. There are some observable alignment errors in the template-to-structural, most noticeably at the 5th percentile. However, this appears qualitatively comparable to aligning adult data to a common template.

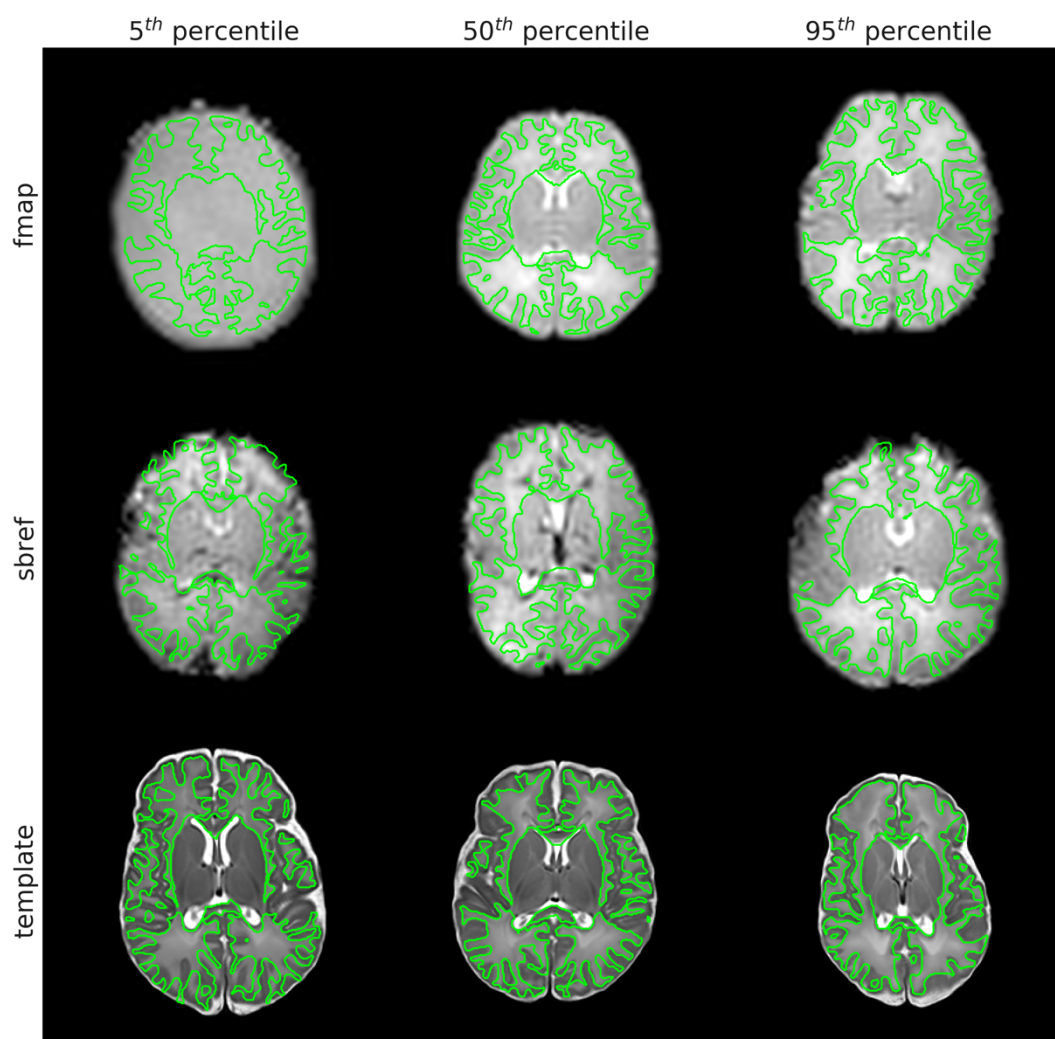


Figure 6. Examples of fieldmap, sbref, and template images resampled to the native structural reference space. The outline of the native structural white-matter discrete segmentation is overlaid in green. Examples were selected at the 5th, 50th and 95th percentile of normalised mutual information between the source image and the reference image (both in reference space). Note: that the 5th percentile fieldmap is dual-echo-time-derived and therefore lacking tissue contrast, whilst the 50th and 95th percentile fieldmaps are spin-echo-EPI-derived

Figure 7 presents the dHCP 40-week T1w/T2w template, as well as group average and standard deviation of the structural T2w and functional (temporal mean) in the template space. The group mean structural (T2w) has good anatomical contrast, although it is not as sharp as the template image, which likely reflects our decision to balance alignment with regularisation as discussed in Supplementary Section 9.1. The group mean functional also demonstrates anatomical contrast, but there are two distinct areas of lower intensity (observed in the mean) and high variability (observed in the stdev). The first is in inferior temporal and frontal areas which are most affected by susceptibility distortions and signal loss, and the second is in inferior occipital and superior-anterior cerebellum. It appears that this latter effect may be related to higher susceptibility induced variation (compared to adults) close to the transverse sinus in neonates, which is large in diameter and “ballooned” in the neonatal period as the venous system is still developing (Okudera et al., 1994). This observation is under further investigation.

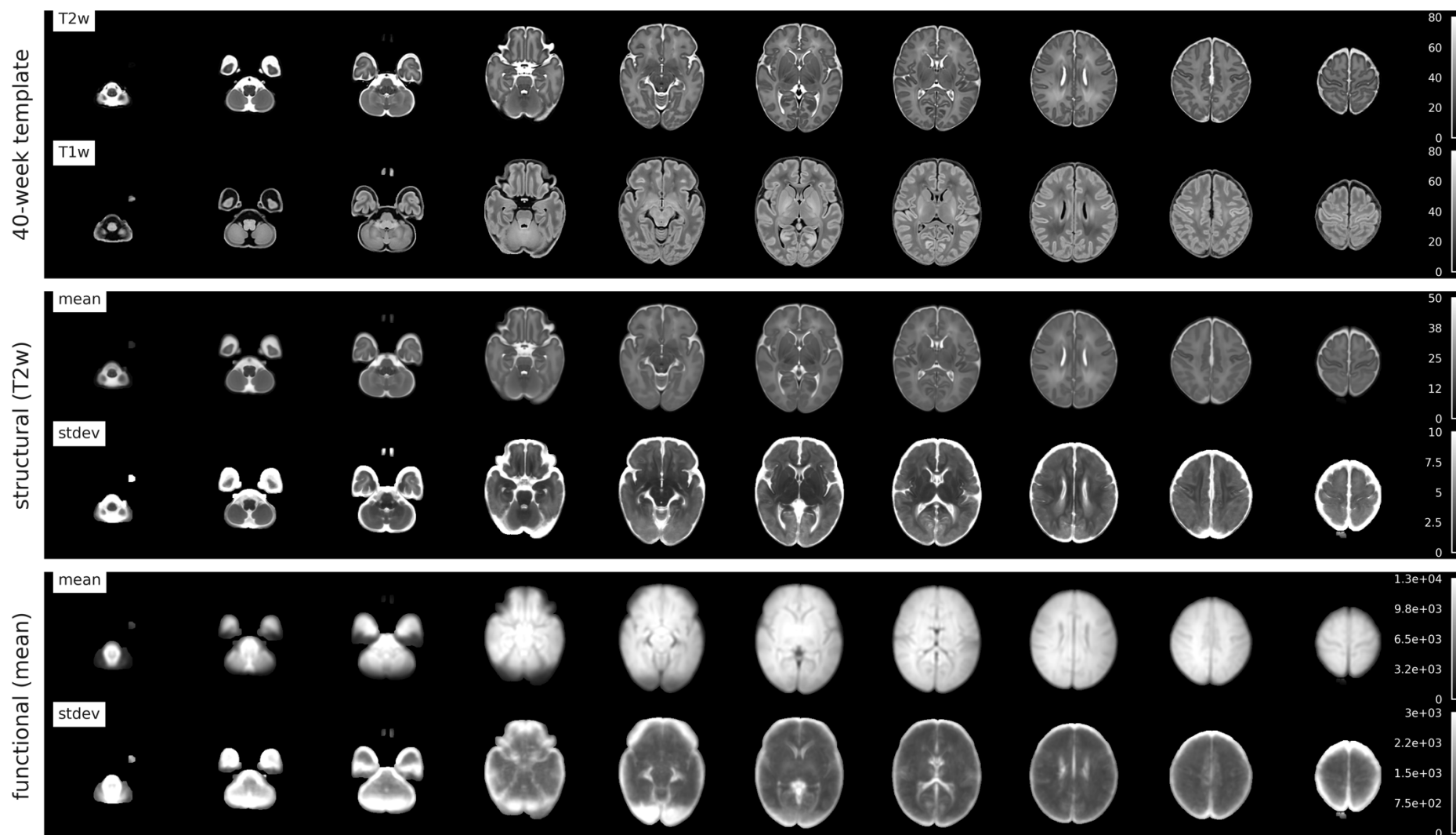


Figure 7. Upper: 40-week T2w and T1w dHCP templates. Middle: group mean and standard deviation ($N=512$) of structural T2w in template space. Lower: group mean and standard deviation ($N=512$) of functional (mean) in template space.

3.4. Susceptibility and motion correction

It is well documented that rfMRI analyses are very sensitive to subject head motion (Power et al., 2014). Head motion results in a number of imaging artefacts, many of which are not typically corrected in traditional adult pipelines, specifically:

1. **Volume and slice misalignment.** Volume misalignment is due to inter-volume movement and is usually effectively corrected using rigid-body registration-based motion correction. Intra-volume movement artefacts are a consequence of rapid subject movement during the sequential acquisition of the slices, or multi-band groups of slices, that constitute a volume. If, for example, the subject moves between the acquisition of the first and the second group of slices, the slices will no longer constitute a true volumetric representation of the object when stacked together, most noticeably by jagged edges of the brain (see Figure 8: Raw).
2. **Susceptibility-by-movement distortion.** Placing a subject in the scanner disrupts the static magnetic field because different tissues have different susceptibility to magnetisation. This field inhomogeneity results in distortions in the acquired image. The exact details of the disruption are defined by the configuration of tissue and air (sinuses, ear canals etc). To correct these distortions, it is common to estimate the field and use this to correct (unwarp) the acquired image. However, any subject movement that involves a rotation of the head around an axis non-parallel to the magnetic flux (z-axis) changes that field, which in turn changes the distortions in the image. That means that volumes acquired with the subject in different orientations will be subject to different distortions, and correction with a static estimate of the field, even with a rigid-body (re-)alignment, will not be sufficient to correct the changing distortions due to motion (see Figure 9: Raw).
3. **Spin-history artefacts.** Movement during scanning can cause subsequent excitations to be misaligned with previous ones, resulting in differential excitation of magnetization at the slice boundaries; this leads to a striping effect in the image intensity (see Figure 11: Multi-band). The dHCP fMRI pipeline employs an ICA-based denoising method to remove spin history effects (see Section 3.5).

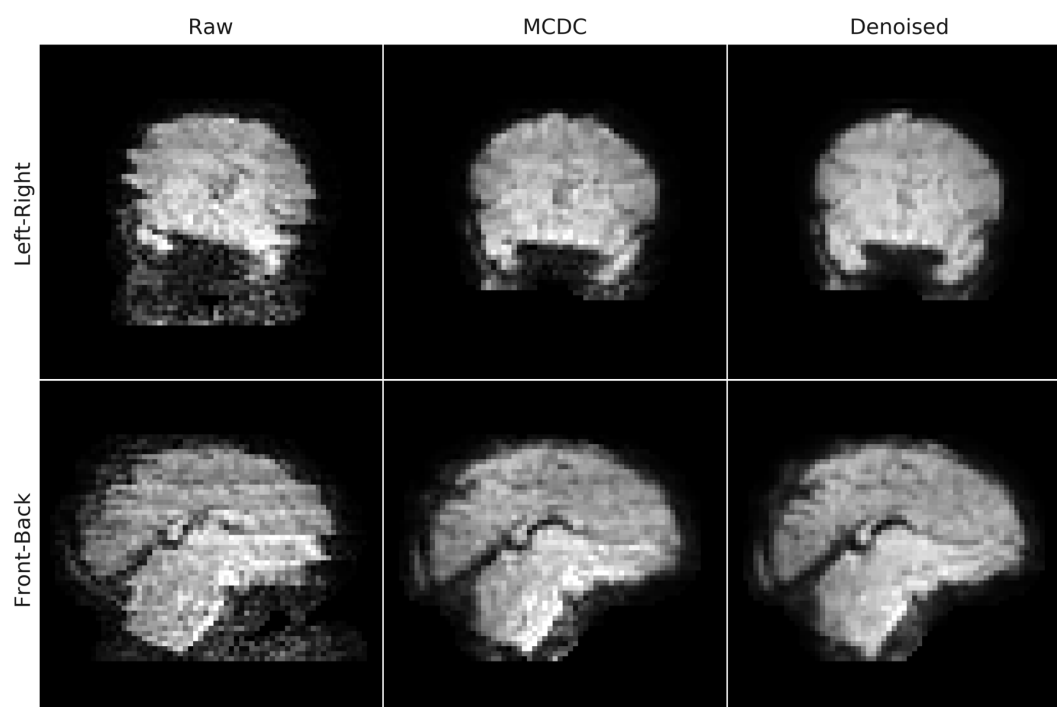


Figure 8. Exemplar single-volume of an EPI from a single-subject with intra-volume movement contamination from a left-right head movement (upper) and a front-back head movement (lower), before (Raw) and after motion and susceptibility distortion correction (MCDC), and after FIX denoising (Denoised).

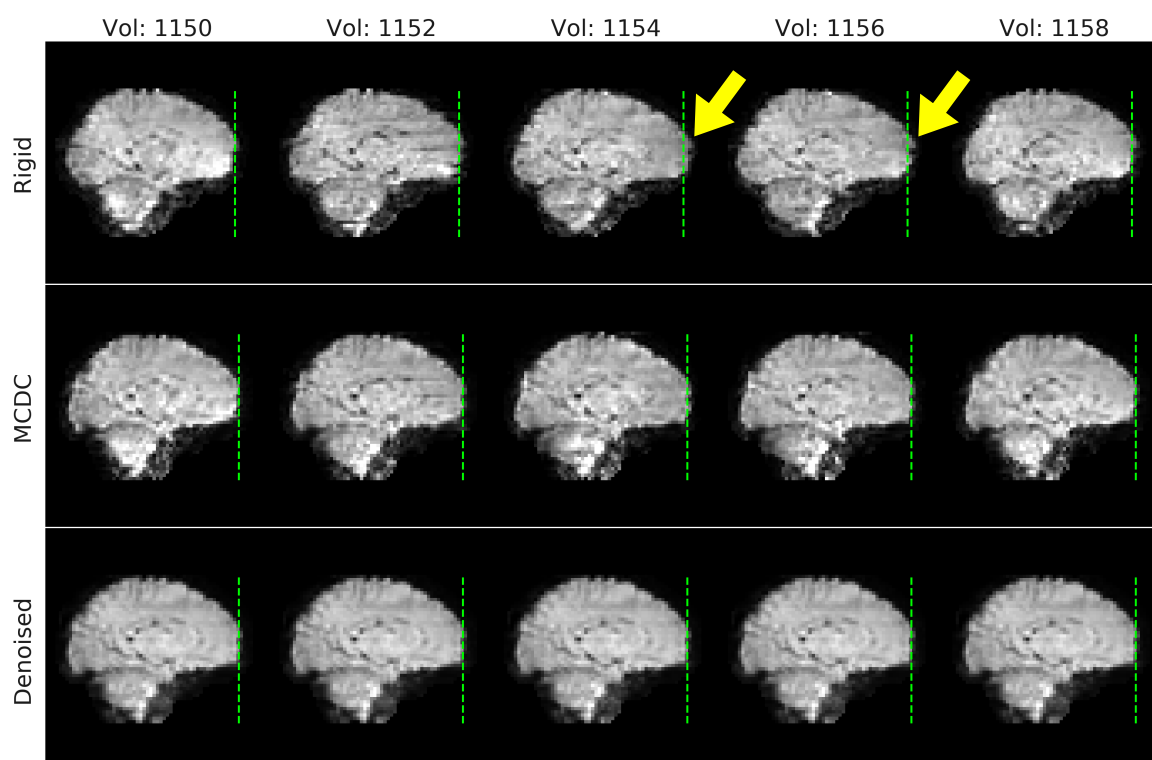


Figure 9. Five exemplar volumes of an EPI from a single-subject with susceptibility-by-movement distortion due to head motion. The rigid data in the top row have been rigid-body motion corrected, and anterior distortions can be observed in volumes 1154 and 1156 where the front of the brain extends beyond the reference line (green-dashed line). The anterior distortions are diminished after motion and susceptibility distortion correction (MCDC), and more so after denoising.

A popular and effective method of dealing with head motion is using spike regression (Satterthwaite et al., 2012) or scrubbing (Power et al., 2014, 2012). These techniques both identify time-points (whole volumes) and then censor these volumes so that they do not affect downstream analysis. The methods differ in how they identify the contaminated volumes and how they censor the contaminated volumes (Parkes et al., 2018). Both methods use framewise displacement (FD; see Table 2) with a fixed displacement threshold to identify contaminated volumes. Scrubbing additionally uses DVARS (see Table 2), also with a fixed threshold. Censoring in spike regression is achieved by creating a nuisance regressor per contaminated volume, whereas scrubbing either excludes contaminated volumes and/or replaces contaminated volumes with surrogate data depending upon what is appropriate for downstream processing. Additionally, both techniques employ a heuristic that discards entire subjects if there are insufficient uncontaminated time-points.

These censoring methods can be expensive in terms of the number of volumes censored, particularly in high-motion cohorts such as neonates. This is particularly true for the dHCP because the babies are scanned without sedation. Using framewise displacement as a surrogate for head motion and a threshold of 0.25 mm, as advocated by Satterthwaite et al. (2013), results in ~20% of TRs being flagged as motion corrupted. Furthermore, if we exclude subjects with < 4 minutes of continuous uncorrupted data, the minimum recommended in spike regression and scrubbing (Parkes et al., 2018; Power et al., 2014; Satterthwaite et al., 2013), then only 18 of 538 subjects are retained. Thus, given the nature of the data, a more precise approach is desirable. Furthermore, we would ideally wish to avoid introducing a hard-censoring step at an intermediate processing point, which may have ramifications for downstream processing. Therefore, we have opted for a principled approach of correcting for artefacts introduced by motion (described in this section) combined with ICA-based denoising (see Section 3.5) which enables us to mitigate the effects of motion without excluding any subjects or time-points. Censoring methods remain a downstream option for researchers using the released data.

Motion and distortion correction (MCDC) are performed using the FSL EDDY tool. EDDY was designed for diffusion data and its extension for functional data is novel. When applied to fMRI, EDDY does not model eddy currents (as these are extremely low in fMRI), it instead treats each fMRI volume as a diffusion B0, using the temporal mean as a predictive model. The motivation for using EDDY on fMRI data is that it is capable of correcting for intra-volume movement artefacts (Andersson et al., 2017) and for artefacts associated with susceptibility-induced off-resonance field changes (susceptibility-by-movement artefacts) (Andersson et al., 2001).

EDDY performs a slice-to-volume (S2V) reconstruction to correct for intra-volume movement. This is achieved by using a continuous discrete cosine transform model of movement over time with degrees of freedom less than or equal to the number of slices (or multiband groups) (Andersson et al., 2017).

EDDY corrects for the susceptibility-by-movement distortion (MBS) by estimating rate-of-change of off-resonance fields with respect to subject orientation (Andersson et al., 2018, 2001). These form parts of a Taylor-expansion of the susceptibility-induced field as a continuous function of subject orientation and allows for the estimation of a unique susceptibility field for each volume.

The fieldmap in native functional space (fieldmap-to-functional, see Section 3.2) is input to EDDY and is used as the zeroth term of the Taylor-expansion of the field. The full MCDC proceeds by first estimating volume-to-volume movement, followed by estimation of slice-to-volume (intra-volume) movement. Finally, the changing susceptibility field is estimated, interspersed with updating of the slice-to-volume movement estimates. Once all the parameters have been estimated a single resampling of the data is performed using a hybrid 2D+1D spline interpolation (Andersson et al., 2017).

MCDC was evaluated on the dHCP-40 fMRI. For comparison, a rigid-body (between-volume) motion correction was also applied to the fMRI data using FSL MCFLIRT (Jenkinson et al., 2002). Temporal signal-to-noise (tSNR) spatial maps were calculated for each subject on the raw (RAW) fMRI time-series, after rigid-body motion correction (RIGID), after slice-to-volume reconstruction (S2V), and after S2V and susceptibility-by-movement distortion correction combined (S2V+MBS). The tSNR maps, for each MCDC condition per subject, were resampled to standard space and voxel-wise group differences between the MCDC conditions calculated. Statistical evaluation of each of the tSNR difference maps was performed with a voxel-wise one-sample t-test using FSL RANDOMISE with 5000 permutations (Winkler et al., 2014). Thresholded group activity maps were corrected for multiple comparisons with false discovery rate (FDR) correction and a threshold of 1.67% (calculated as 5% divided by the number of tests).

Rigid-body (RIGID) motion correction significantly improves tSNR compared to the RAW data (see Figure 10) mostly at the cortex and edges of the brain. S2V correction significantly improves tSNR compared to RIGID across the whole brain, and S2V+MBS further improves tSNR in anterior and posterior areas where susceptibility distortions are expected. The correction of intra-volume motion artefacts can be visually observed in an exemplar volume from a single subject in Figure 8 (MCDC), and the correction of susceptibility-by-movement distortions can be observed in an example subject in Figure 9 (MCDC). On the larger cohort of the dHCP-512, the combined motion and distortion correction stage (comprising S2V and MBS) significantly improves tSNR across the whole brain compared to the raw data (Figure 14).

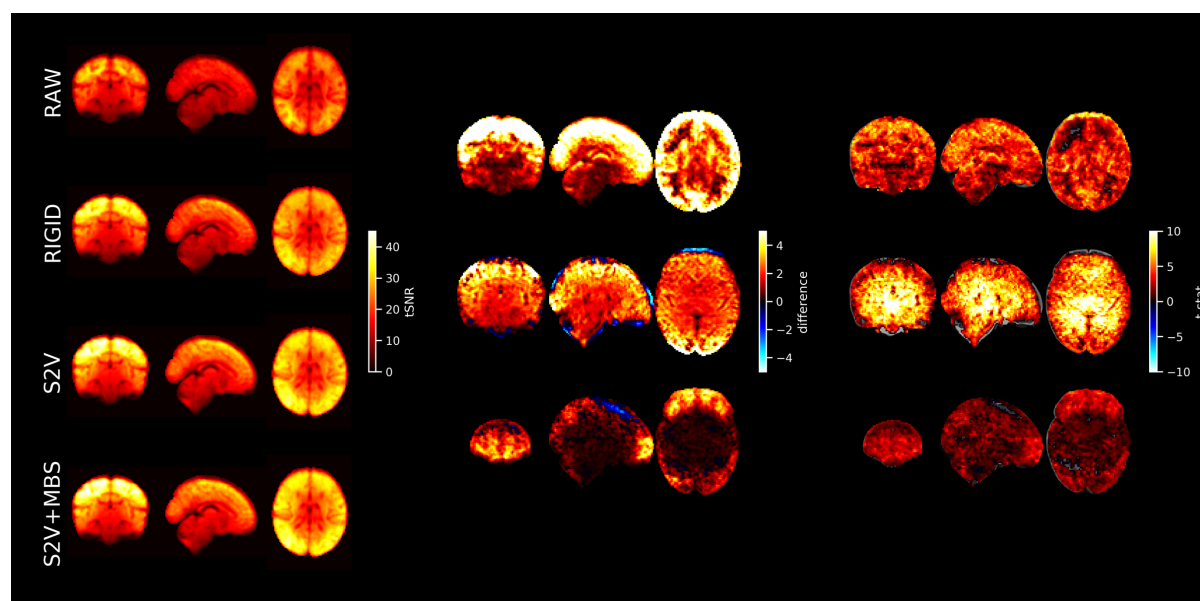


Figure 10. Left: mean tSNR (N=40) for raw EPI (RAW), rigid-body motion correction (RIGID), slice-to-volume motion correction (S2V), and S2V + susceptibility-by-movement distortion correction (S2V+MBS). Centre and right: difference maps and t-statistics for RIGID tSNR minus RAW tSNR (upper), S2V tSNR minus RIGID tSNR (middle) and S2V+MBS tSNR minus S2V tSNR (lower). Only significant results shown. Multiple comparison correction was achieved by FDR correction with a 1.67% threshold (5% divided by the number of tests). The slice coordinates for the difference maps and t-statistic maps were selected by the maximum t-statistic.

3.5. Denoising

Even after motion and susceptibility distortion correction there are still residual motion-related artefacts (for example, due to spin history effects) that need to be dealt with. There are also a number of additional structured noise artefacts, unrelated to head motion, that need to be addressed. Therefore, we perform a denoising procedure based on spatial independent component analysis (sICA) to remove these structured noise artefacts. SICA has proven to be a powerful tool for separating structured noise from neural signal and is widely used for denoising fMRI in both adults and infants (Alfaro-Almagro et al., 2018; Griffanti et al., 2017; Mongerson et al., 2017; Smith et al., 2013) and has proven to be of great value in connectome projects including the (adult) Human Connectome Project and UK Biobank.

sICA

The (motion and distortion corrected) single-subject functional time-series was high-pass filtered (150s high-pass cutoff) to remove slow drifts, but no spatial smoothing was performed. SICA was performed using FSL MELODIC (Beckmann and Smith, 2004). The sICA dimensionality was automatically set using MELODIC's Bayesian dimensionality estimation, however it was capped at an upper limit of 600 components (26% of the number of timepoints). Whilst we were conscious of not wanting to reduce the DOF too much, the decision to implement the cap was a pragmatic attempt to reduce the computational cost of the pipeline. We found in earlier iterations of the pipeline on smaller subsets of data that very few subjects were constrained by the 600 cap, and those that were constrained mostly contained a higher number of unclassified noise components (data not shown).

The main types of component observed in the dHCP sICA (see Figure 11 for examples) were:

1. **Signal.** Characterised by low frequencies and spatial clustering. Unlike adult ICs we often observe residual motion related jumps in the signal time-course, therefore we do not use that as a basis for exclusion.
2. **Multi-band artefact.** Characterised by the “venetian blind” effect (stripes in the sagittal and coronal planes) in the spatial maps and the time-course typically shows jumps that correlate with motion spikes. This artefact likely comprises the spin-history effects (described Section 3.4) as well as inter-slice leakage. Leakage results from imperfect multi-band reconstruction, and therefore residual signal from any given slice can “leak” to co-excited slices after separation, which results in correlations between the slices over time.
3. **Residual head-movement.** Characterised by a ring (or partial ring) at the edge of the brain in the spatial map, and time-course that strongly reflects the motion parameters or framewise displacement.
4. **Arteries.** In adults this would be characterised by activity in the spatial maps in the middle cerebral branches and a distinctive high-frequency spectrum. However, with the neonates we do not have sufficient spatial resolution and so rely almost exclusively on the power spectrum. This artefact is less commonly observed than the other artefacts in the dHCP data.
5. **Sagittal sinus.** Similar to adults, the main characteristic used to identify the sagittal sinus artefact is the superior inter-hemispheric ring in the sagittal plane of the spatial map. The sagittal sinus was often difficult to identify, and potential candidates were often labelled as “unknown” because the rater was not completely confident in the classification.
6. **Unclassified noise.** Does not clearly belong to one of the other structured noise categories and is characterised by a scattered spatial pattern, and often has jumps in the time course consistent with motion spikes.
7. **CSF pulsation.** Although not shown in the figure, we occasionally observe CSF pulsation characterised by a spatial overlap with the ventricles.

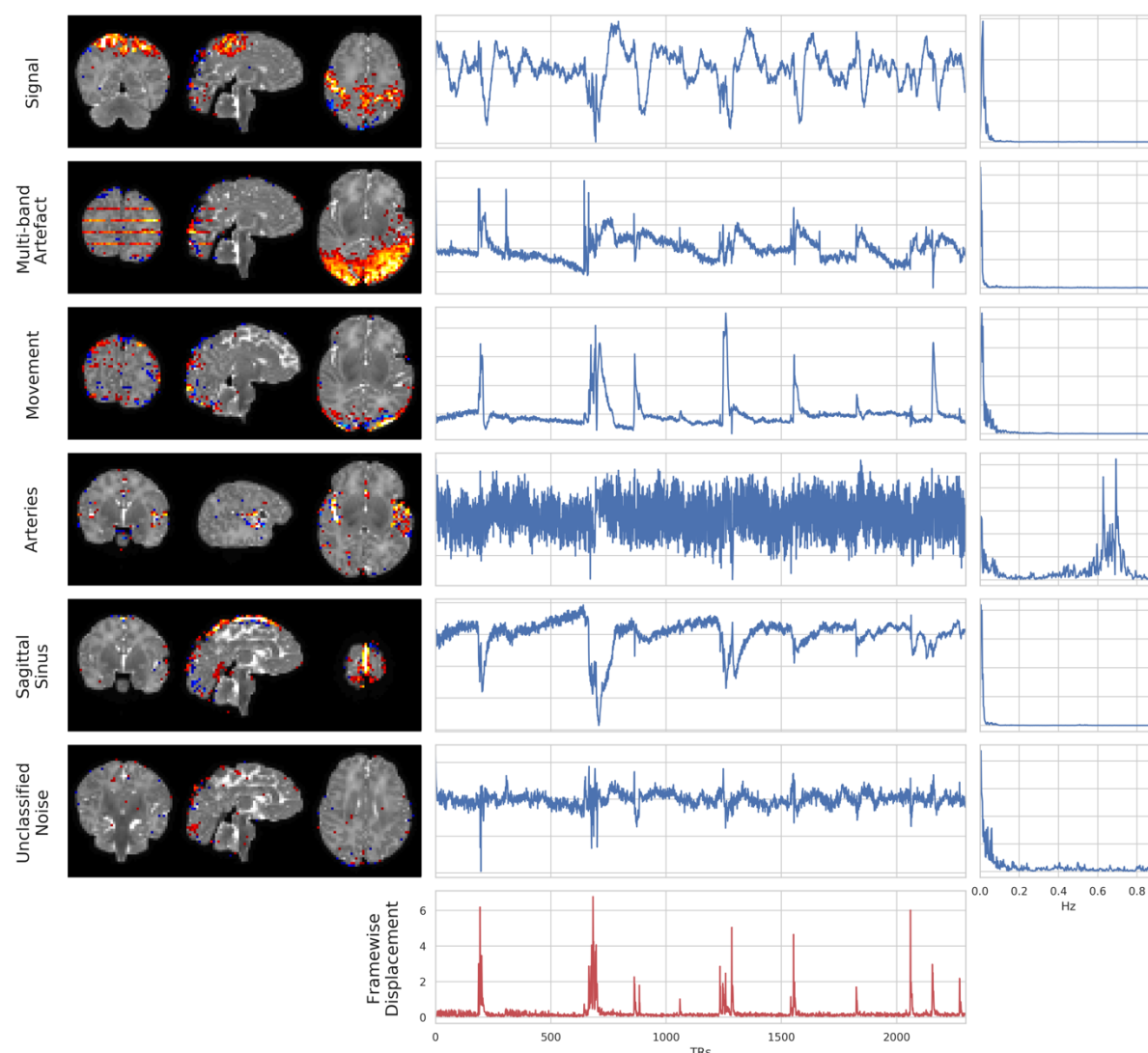


Figure 11. Exemplar spatial maps (left), time-courses (center), and power spectra (right) for independent components (IC) from a single subject. Each row is a different IC that was manually classified as stereotypical for signal, multi-band artefact, head movement, arteries, sagittal sinus, and unclassified noise. Frame-wise displacement is plotted in the last row as a reference for the amount and timing of movement for this subject.

FIX

Artefactual independent components (ICs) were identified automatically using FMRIB's ICA-based Xnoiseifier (FIX) v1.066 (Salimi-Khorshidi et al., 2014) which uses an ensemble machine learning classifier to label ICs as either **artefact** or **not** (ergo signal).

FIX was trained on a subset of manually labelled independent components (ICs) from 35 subjects. This subset was labelled using the scheme outlined in Griffanti et al. (2017) by a single investigator as signal, artefact, or unknown. The age range of the 35 subjects was 27.2 – 45.1 weeks PMA, the total number of manually labelled ICs was 4947.

As is the general theme of this paper, the nature of the neonatal data posed specific challenges for the manual IC labelling. In particular, the low spatial resolution relative to the size of the brain and the resulting partial-voluming made it more challenging to identify some of the components that would typically rely heavily on spatial features in adults, such as overlap with GM, WM and CSF. Therefore, we tended to rely more heavily on the time-courses. However, even in the time-courses, Griffanti et al. (2017) would recommend that signal should be “without sudden, abrupt changes” which we found to be too constraining in

these data. Clearly stereotyped artefact components (head-movement, multi-band artefact, sagittal sinus, arteries, CSF pulsation, and unclassified noise) were labelled as “noise”. Any components that were unclear and/or difficult to judge were labelled as “signal”.

FIX was trained on the manually-labelled sICA data with a leave-one-out (LOO) training scheme. The median LOO true positive rate (TPR) was 100% and the median true negative rate (TNR) was 96%, indicating that the classifier erred on the side of inclusion (i.e. more likely to include noise than discard signal). This is a desired characteristic and is the reason that uncertain components were labelled as “signal”.

MELODIC/FIX was applied to the dHCP-538 dataset. The minimum number of ICs decomposed for a subject (i.e., ICA dimensionality) was 42, whilst the cap on the automatic dimensionality estimation of MELODIC resulted in 40 (7.4%) decompositions being constrained to the maximum dimensionality of 600. The proportion of ICs per subject/decomposition classified as noise and flagged for removal ranged from 53.2% to 100%, with a mean of 92.1% (see Figure 12). This is consistent with adults where the mean percentage of ICs classified as noise is typically ~70-90% (Griffanti et al., 2017). The number of ICs per subject/decomposition classified as signal, and therefore flagged for retention, ranged from 0 to 46.8% with a mean of 7.9%.

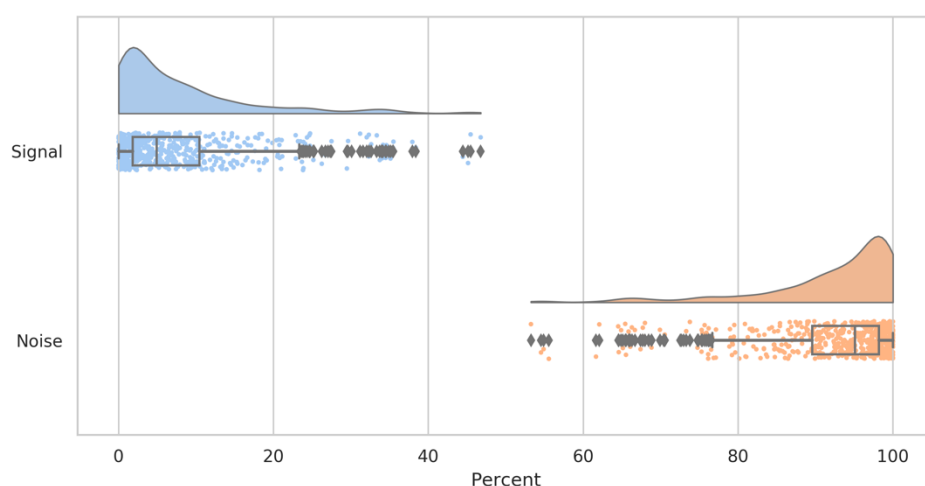


Figure 12. Distribution across decompositions of percentage of components (per decomposition) classified as signal or noise by FIX.

There were 19 subjects for whom all ICs were classified as noise. However, this does not necessarily mean that these data contained no signal, rather it means that signal information was not contained within the (constrained) reduced dimensionality on which the ICA was performed (and hence such signal would not be removed by the ICA denoising). Therefore, these data were still retained for further analysis.

Figure 13 shows that motion has a strong impact on the IC classification with the number of signal ICs decreasing with head movement (Spearman $r=-0.5$) and the number of noise ICs increasing ($r=0.64$). Age has a smaller impact with older babies tending to have more signal ICs ($r=0.44$) and less noise ICs ($r=-0.28$). This could be related to older babies tending to move more (see Figure 19), or could be a consequence of relative spatial resolution with younger babies having smaller brains relative to the resolution of the acquisition.

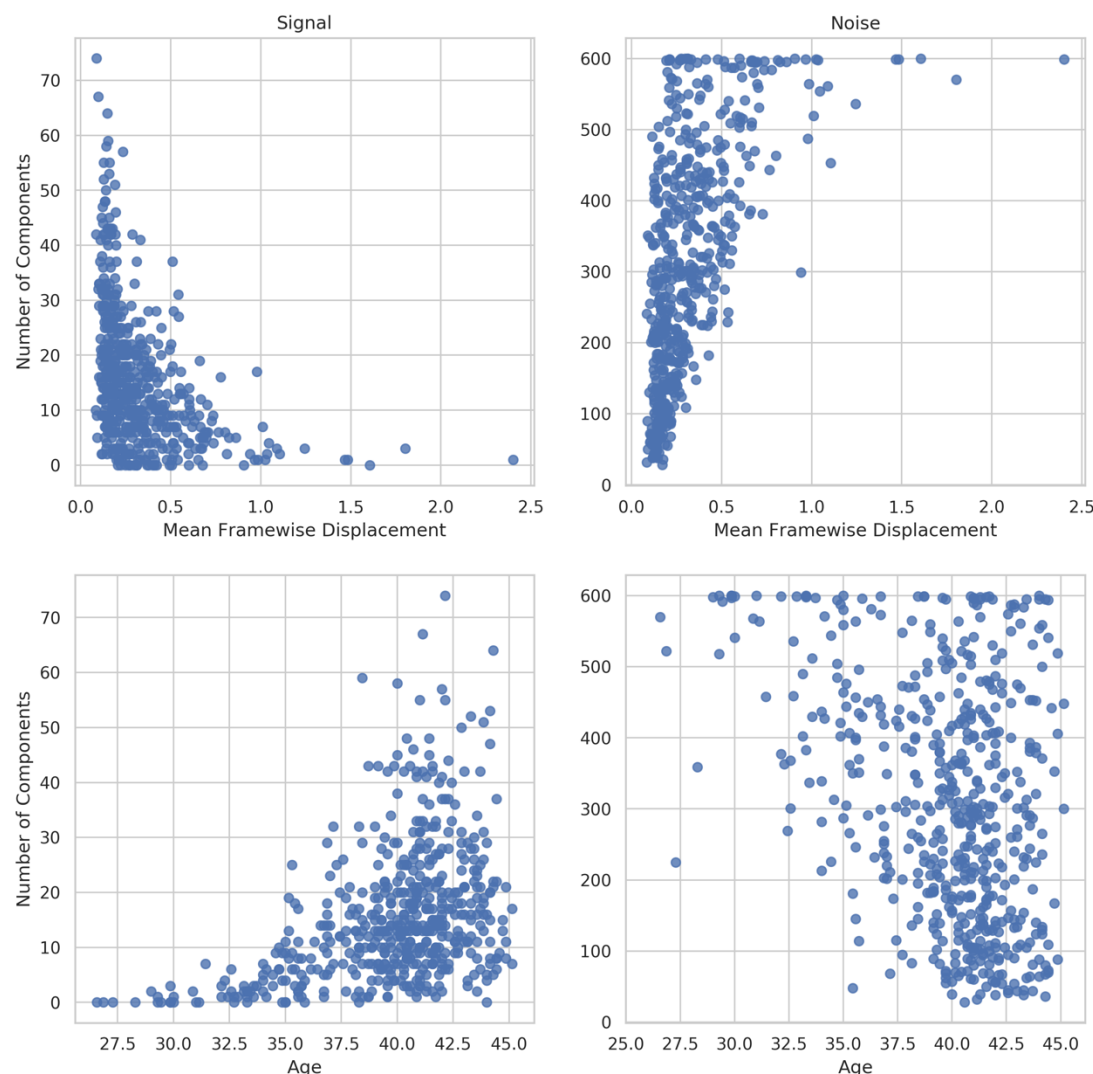


Figure 13. Correlation of the number of ICs classified by FIX as signal (left) and noise (right) with head movement, where mean framewise displacement is used as a surrogate for motion contamination. Age is the post-menstrual age-at-scan in weeks.

Nuisance regression

The FIX noise ICs and the motion parameters (see Table 2) were simultaneously regressed from the motion and distortion corrected functional time-series. The pipeline also supports inclusion of other nuisance regressors, such as FD outliers and DVARS outliers (see Table 2), physiological noise regressors, and tissue regressors. The inclusion of FD/DVARS outliers would effectively perform spike regression (Satterthwaite et al., 2013). However, given our motivation to minimise pre-processing we have not included additional nuisance regressors (beyond artefact ICs and motion parameters).

TSNR spatial maps were calculated for each subject on the raw (Raw) fMRI time-series, after motion and distortion correction combined (MCDC), and after denoising (Denoised). The tSNR maps were resampled to standard space and voxel-wise group differences between conditions calculated. Statistical evaluation of each of the tSNR difference maps was performed with a voxel-wise one-sample t-test using FSL RANDOMISE with 5000 permutations (Winkler et al., 2014). Thresholded group activity maps were corrected for multiple comparisons with FDR and a 2.5% threshold (calculated as 5% divided by the

number of tests). After FIX denoising, the tSNR is substantially and significantly improved across the whole brain, with the greatest improvement seen in cortical areas (see Figure 14).

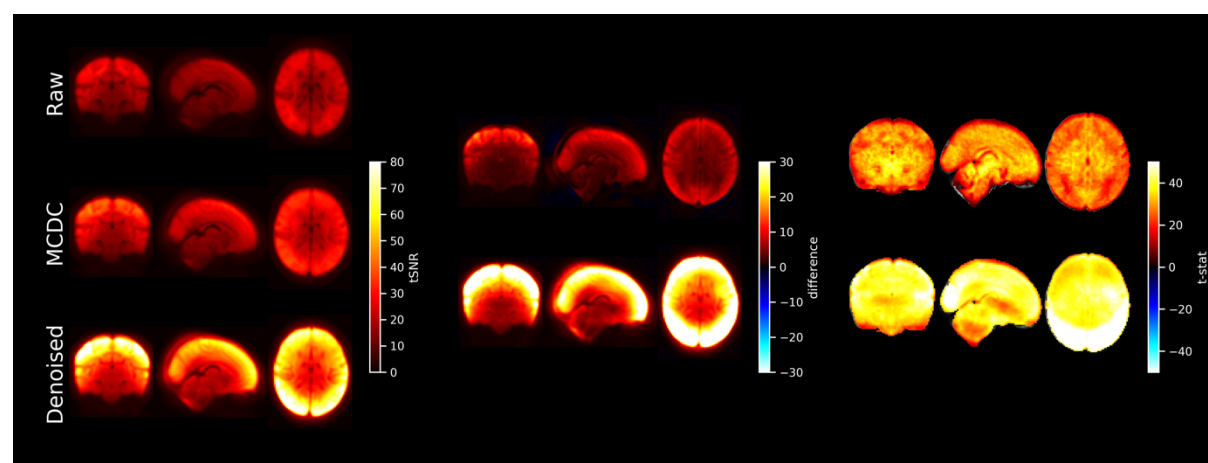


Figure 14. Left: mean tSNR ($N=512$) for raw EPI (RAW), motion and distortion corrected EPI (MCDC), and denoised EPI. Centre and right: difference maps and t-statistics for MCDC minus RAW tSNR (upper), and denoised minus MCDC tSNR (lower). Only significant results shown. Multiple comparison correction was achieved by FDR correction with a 2.5% threshold (5% divided by the number of tests)

Voxplots (aka. “carpetplots” and “grayplots”) comprise a heat-map of voxel x time fMRI intensities (with mean and linear trend removed) along with plots of nuisance time-series such as DVARS and framewise displacement (surrogates for motion). Voxplots were developed by Power (2017) and are advocated as an informative way to visualise and assess scan quality. We have adapted them by converting each heat-map to a z-score and using a diverging colormap so that it accentuates divergence from the mean of zero. Voxplots for a single example subject for raw, motion and distortion corrected (MCDC), and denoised fMRI are presented in Figure 15.

Strong vertical stripes can be observed in the pre-denoised data (raw and MCDC) that are contemporaneous with the worst spikes in the nuisance time-series (DVARS and framewise displacement).

After motion and distortion correction, there is less variation in-between the vertical stripes compared to the raw fMRI, which can also be observed in the DVARS plot as lower values between the major spikes. The heat-map also shows that this reduced variation is largely limited to the white and gray-matter. The intensity of the vertical stripes also drops after motion and distortion correction, which is difficult to see in the heat-maps because each map is independently normalised to the standard score; however, it can be observed as lower amplitudes of the major spikes in the DVARS plot.

After denoising, there are several striking differences in the voxplot. Firstly, the strong vertical stripes are replaced with closer-to-zero vertical stripes, indicating that the denoising has removed much of the variation at these times and the remaining signal is closer to the mean. This is represented by dips in the DVARS plot during these times. If spike regression were used we would expect to see that these periods would be exactly the mean and would thus be zero in both the heat-map and DVARS plot. Thus, ICA-based denoising seems to provide a qualitatively similar result to spike regression in these periods of time when motion is the worst. Secondly, the tSNR difference between the white-gray-matter and the sub-cortical areas is further increased, consistent with the spatial group-maps presented in Figure 14.

ICA-based denoising can subsume the role of spike regression when the motion is severe, however, it is less aggressive and does not simply remove all information during these periods. In practise, it will often remove much of the variance, but it can in principle leave residual signal if it is not modelled as artefact. We consider that scrubbing and spike regression are a “hard” form of temporal censoring, whereas ICA-based denoising is a less aggressive “soft” spatio-temporal censoring. In either case, subsequent analyses must appropriately account for the noise removal approach and the reduction or removal of BOLD signal during high motion periods.

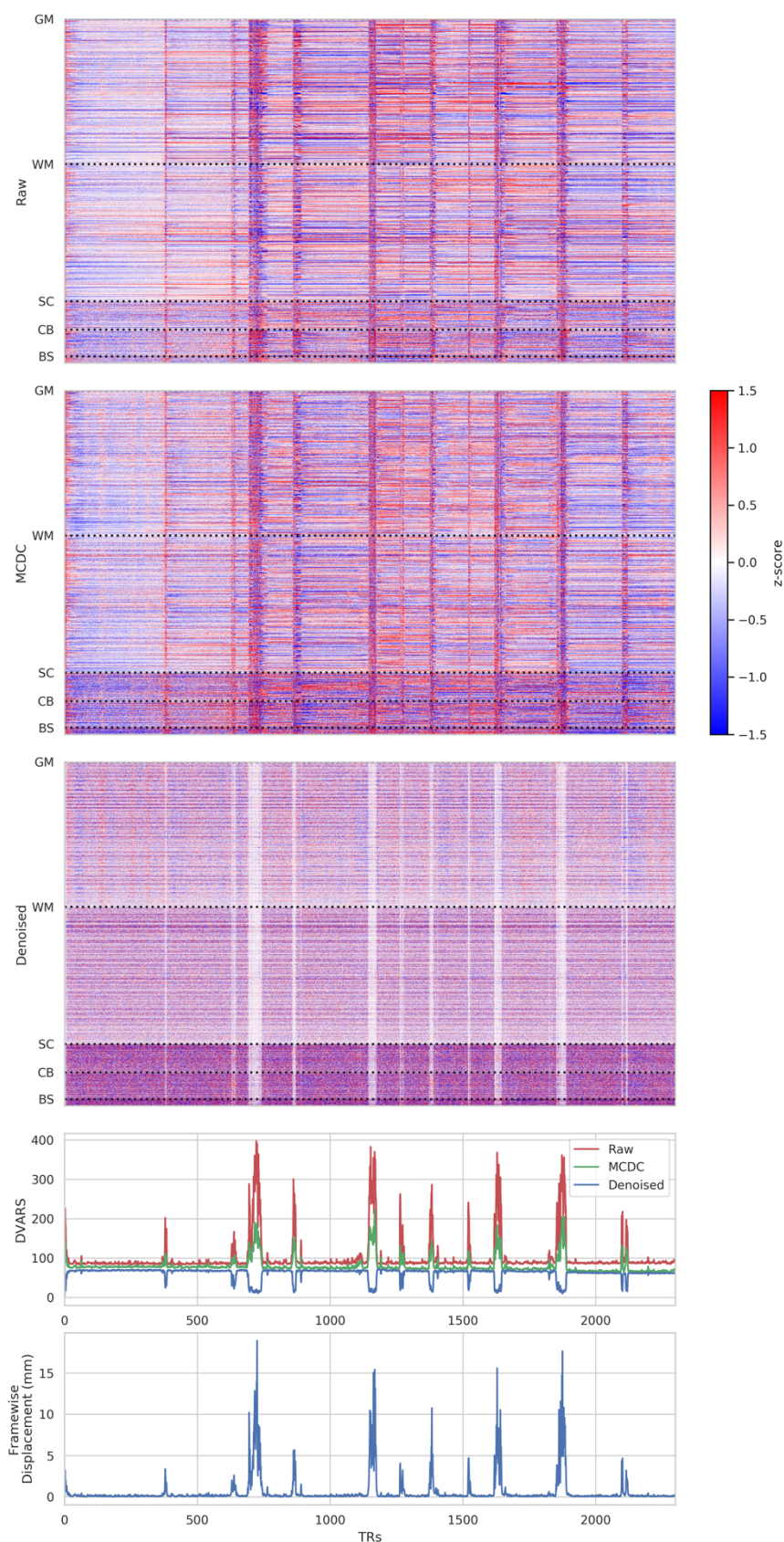


Figure 15. “Carpet plots” for raw, motion and distortion corrected (MCDC), and denoised fMRI from a single exemplar subject. Carpet plots are adapted from (Power, 2017) with the modification that each heat-map is converted to a z-score and a diverging colormap is used. Mean and trend were removed from each heat-map. GM=gray-matter, WM=white-matter, SC=sub-cortical, CB=cerebellum, BS=brainstem.

3.6. Quality control/assurance

The fMRI pipeline automatically calculates a number of QC metrics (see Table 2) and generates an HTML QC report for each subject (Supplementary Figure 1). The report presents the QC metrics for the individual within the context of group distributions for the corresponding metrics.

Table 2. Quality control metrics used in the dHCP fMRI pipeline.

Metric	Description
Motion parameters (MP)	6 rigid-body motion time-series (3 rotation, 3 translation) as estimated during motion correction
DVARS	DVARS is the RMS intensity difference between successive volumes (Power et al., 2012)
DVARS outliers	Binaries DVARS with threshold = 75 th percentile + (1.5 x inter-quartile range)
Framewise displacement (FD)	FD is calculated as the average of the rotation and translation motion parameter differences (Power et al., 2012)
FD outliers	Binaries FD with threshold = 0.25 mm
Temporal signal-to-noise ratio (tSNR)	Per-voxel temporal mean divided by the temporal standard deviation
Contrast-to-noise ratio (CNR)	Temporal standard deviation of the contrast divided by the standard deviation of the noise, where the contrast is the functional image minus the noise, and the noise is the residual of dual regressing the group spatial maps onto the functional image.
Normalised mutual information (NMI)	The normalised mutual information between a source image and a reference image (both in reference space).

A subset of the metrics are converted to z-scores (using the median absolute deviation which is more robust to outliers than the standard deviation), and sign flipped as necessary so that more positive values are better and negative values are worse (see Figure 16). Subjects that score less than -2.5 on any of the subset of metrics are considered to have failed the QC and are flagged for further manual inspection. The specific subset of measures used are mean denoised DVARS, mean denoised tSNR, func-to-sbref NMI, sbref-to-structural NMI, structural-to-template NMI, and fieldmap-to-structural NMI. Under this regime, out of the total of 538 subjects, 5 subjects failed mean denoised DVARS, 4 failed denoised tSNR, 3 failed sbref-to-struct NMI, 18 failed template-to-struct NMI, and 4 failed fmap-to-struct. However, there was overlap of subjects between these failures, with a total of 26 subjects failing and thus 512 subjects passing. It is anticipated that a large proportion of the failed subjects can be recovered with improvements to the template-to-struct registration that are currently under investigation.

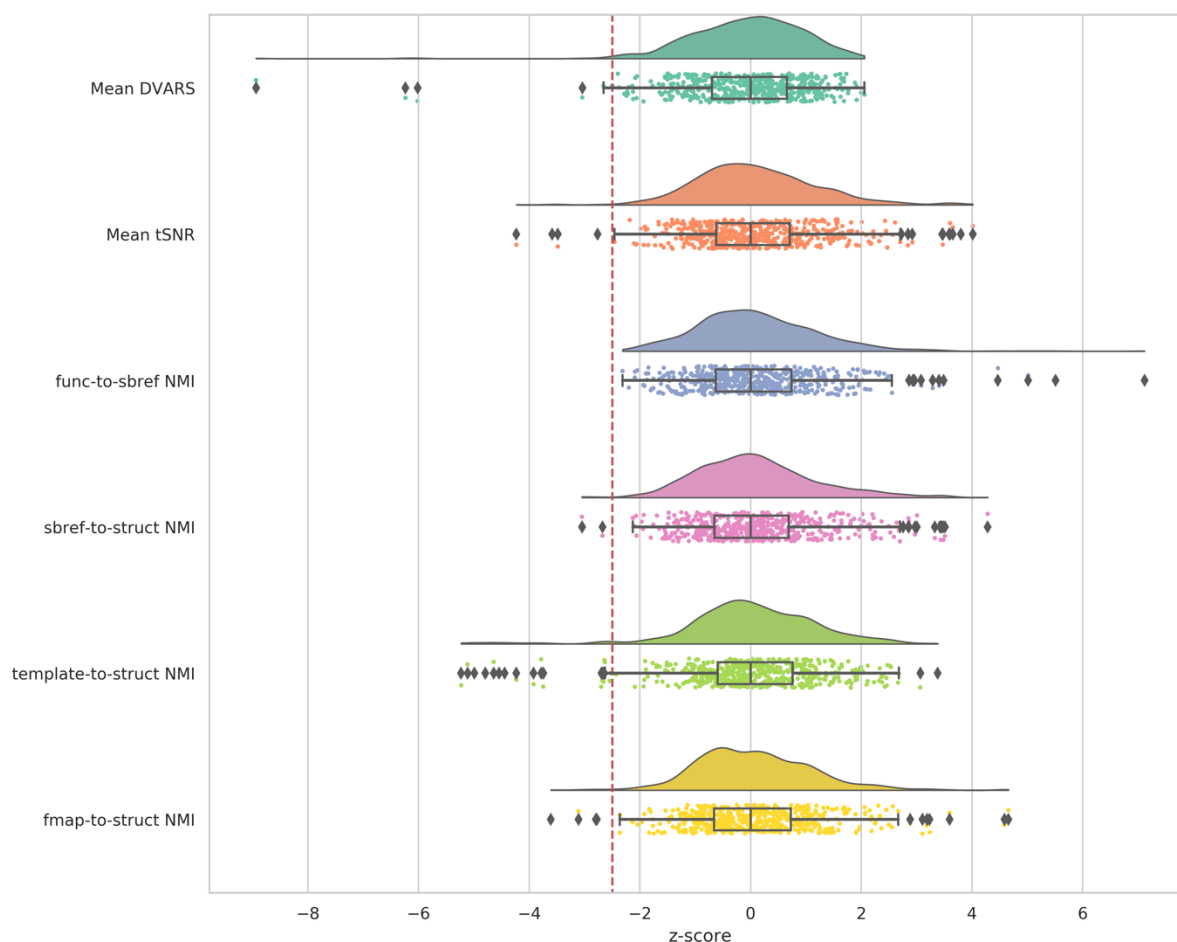


Figure 16. Group z -distributions of QC metrics. More negative z -scores indicate poorer quality on the respective metric. Z -scores less than -2.5 (indicated by red dashed line) are flagged as failing the pipeline and require further inspection.

3.7. Resting-state networks

Here we present group RSNs and their association with PMA as a validation that the dHCP fMRI pipeline can identify plausible RSNs, and to demonstrate the granularity of what can be extracted from this challenging cohort with suitable pre-processing.

For the derivation of resting-state networks, we use PROFUMO, an implementation of the probabilistic functional modes (PFM) model as defined in Harrison et al. (2015). This approach uses a hierarchical Bayesian model to decompose the data into a set of functional modes (i.e., RSNs). Unlike most ICA-based approaches, group and subject-specific spatial maps associated with these modes are estimated simultaneously. The PFM model includes a number of different terms that regularise the decomposition, including, for example, hierarchical priors that encourage consistency in both the spatial layout of RSNs across subjects, and their patterns of functional connectivity (i.e., connectomes). The model also takes haemodynamics into account, as these dominate the temporal characteristics of the BOLD signal. As such, we base these priors on the work of Arichi et al. (2012), who quantify haemodynamic responses for neonates. Specifically, we used the FSL FLOBS tool (Woolrich et al., 2004) to construct a term and pre-term HRF model using the reported haemodynamic response characteristics described in Arichi et al. (2012). Figure 17 depicts the term and pre-term HRFs that we constructed, along with the default adult HRF used in PROFUMO. Only a

single HRF model can be used within a PROFUMO analysis, therefore we used the term HRF model as the majority of the dHCP neonatal cohort are term age. The term HRF is characterised by a longer time to peak positive amplitude, a smaller positive peak amplitude and a deeper negative undershoot period relative to the adult HRF (Arichi et al., 2012).

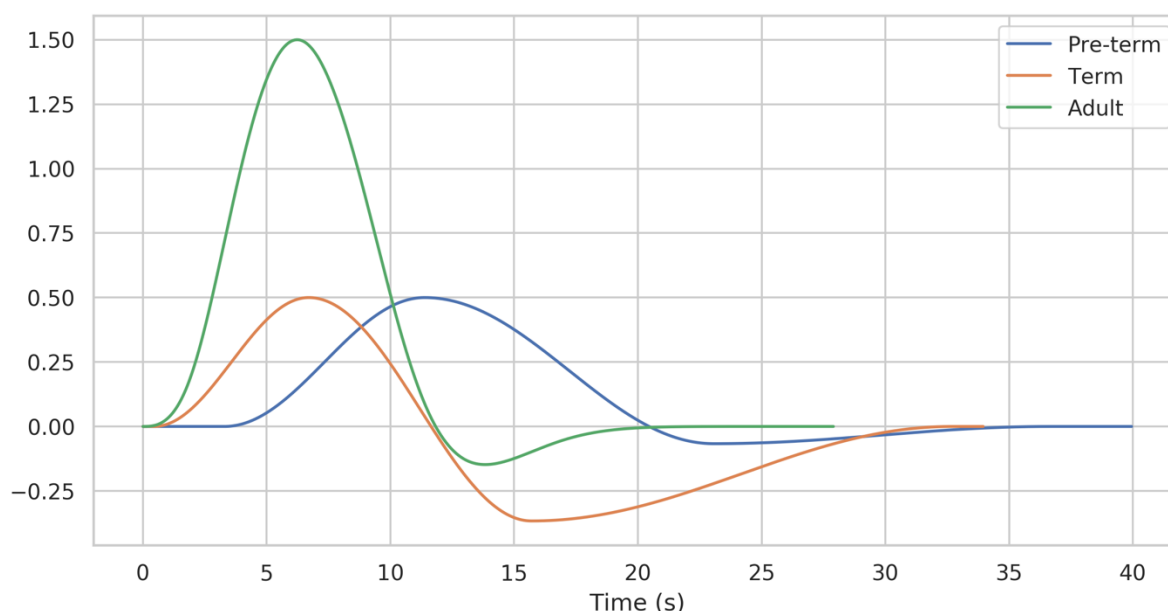


Figure 17. Term and pre-term HRF models constructed for this study, and the default adult HRF model within PROFUMO. The term and pre-term haemodynamic response characteristics are adapted from Arichi et al. (2012). The amplitude of each HRF is rescaled as part of the fitting process, however, for visualisation purposes the peak amplitudes here have been scaled to be consistent with the measured amplitudes in Arichi et al. (2012).

Formally, the PFM model simultaneously decomposes each dataset, $Ds_{V \times T}$, into a set of M modes. These consist of subject-specific spatial maps $Ps_{V \times M}$, amplitudes Hs_M , time courses $As_{M \times T}$ and network matrices $\Sigma_{M \times M}$. These can be combined into a matrix factorisation model at the subject level i.e. $Ds \approx Ps \times \text{diag}(Hs) \times As$. These subject-level decompositions are linked via a set of hierarchical priors, which represent the group-level description of the data (and include, amongst others, the group-mean spatial maps and connectomes). This forms a complete probabilistic model for the data, and the group- and subject-level information is inferred together via a variational Bayesian inversion scheme. In other words, we not only infer subject-specific information in a sensitive manner, but we also infer the group-level properties of the RSNs themselves.

PROFUMO was performed on the denoised volumetric data of 512 dHCP subjects that passed the pipeline QC (see Section 3.6) to resolve resting-state networks (RSNs). Prior to PROFUMO the data were spatially smoothed (FWHM=3mm) using FSL SUSAN, with an intensity threshold of 75% of the contrast between the median brain intensity and the background (Smith and Brady, 1997), and normalised to the grand median intensity as per FSL FEAT (Jenkinson et al., 2012). 16 RSNs were identified (see Figure 18) that show good correspondence to both adult (Smith et al., 2013) and infant RSNs (Doria et al., 2010; Mongerson et al., 2017).

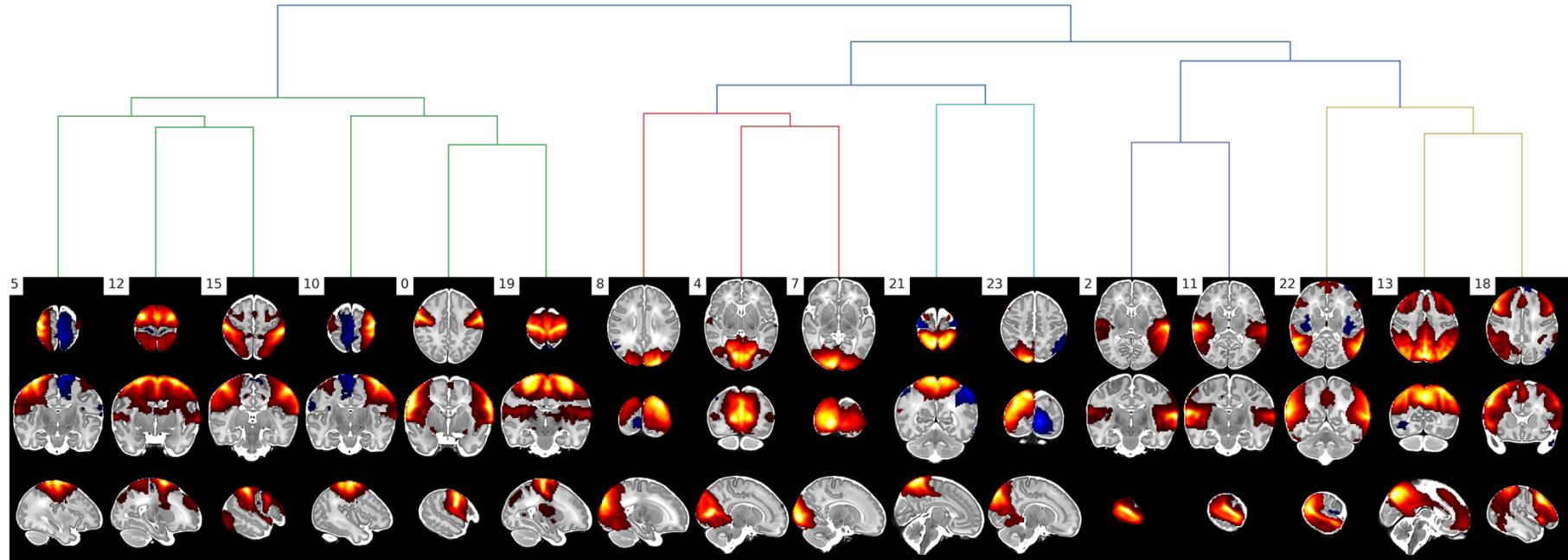


Figure 18. PROFUMO modes qualitatively assessed as corresponding to adult resting-state networks. Hierarchical clustering based on spatial correlation between the modes.

Before regressing the RSNs on age to look for developmental changes, we examined a number of age-related confounds. Specifically, we correlated DVARS and FD (as surrogates for motion), tSNR, and brain volume (estimated as the number of voxels in the subject's brain mask in func space). We observed a strong positive correlation of brain volume with age ($r=0.86$), a small positive correlation of mean DVARS ($r=0.05$) and mean FD ($r=0.16$) with age, and a small negative correlation of tSNR ($r=-0.15$) with age (see Figure 19). Movement and tSNR are clear confounds that we wish to control for, however brain volume is more challenging because it can be both a confound (due to differences in relative resolution and signal) and a legitimate feature of development. Here we control for brain volume and present RSN correlations with development.

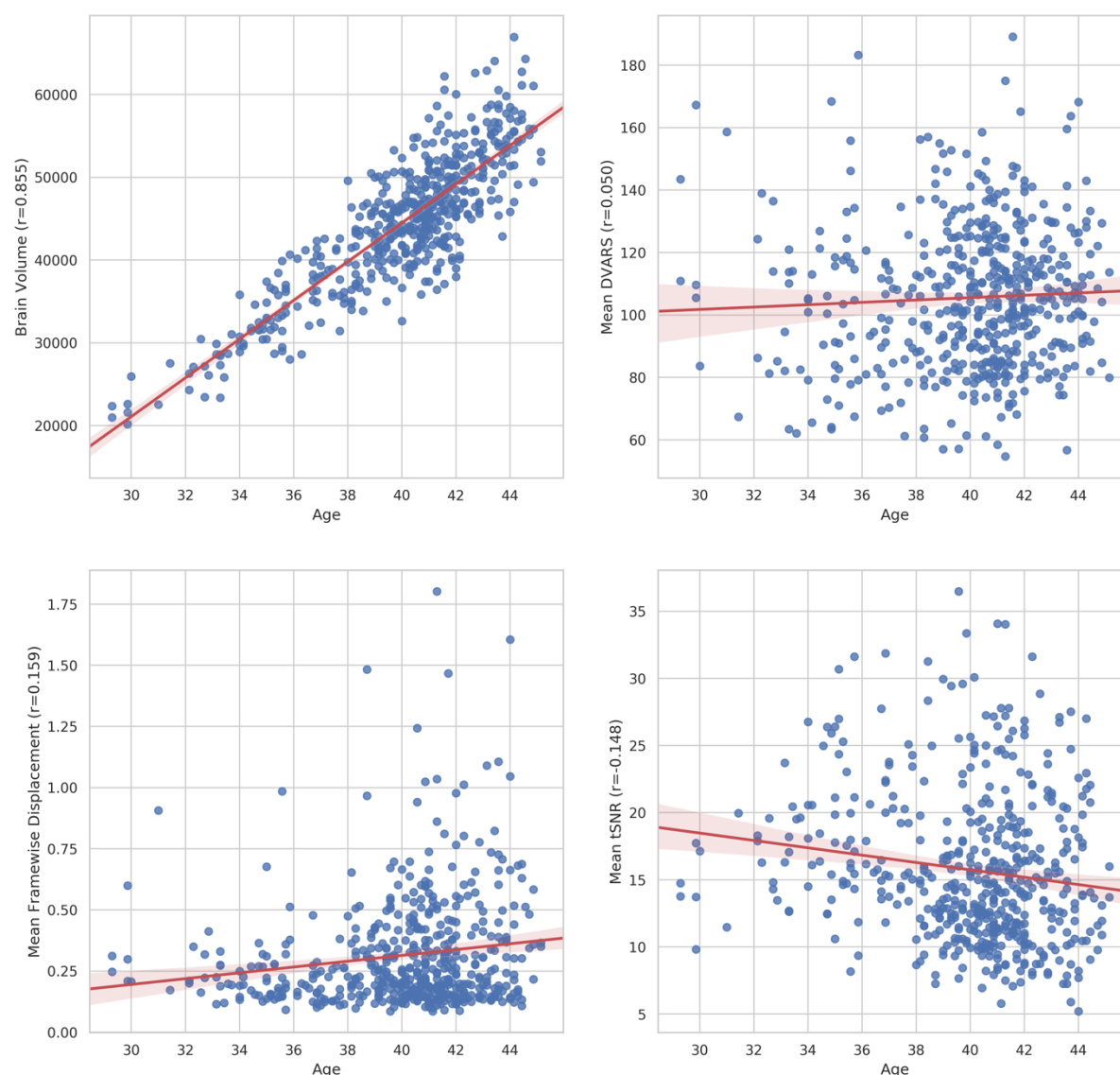


Figure 19. Age-related confounds. Age is the post-menstrual age-at-scan in weeks.

We used FSL dual-regression (DR)(Nickerson et al., 2017) to regress all the PFM-group-maps onto the individual subject fMRI to yield subject-specific time-courses and spatial maps. As recommended by Nickerson et al. (2017), when performing DR the subject-specific time-courses were variance normalised before the second stage of DR which means that the single-subject DR spatial maps capture both the spatial distribution of the network (i.e.

“shape”) as well as the “amplitude” of the network activity. To allow us to delineate the contribution of just amplitude alone, we additionally calculated the median absolute deviation of the DR time-courses (not variance-normalised) as an estimate of amplitude. To investigate changes with age, we regressed the spatial maps and amplitudes on age, controlling for DVARS, FD, tSNR, and brain volume (see Figure 20) using FSL RANDOMISE (Winkler et al., 2014) with 5000 permutations. Multiple comparison correction was achieved by FDR correction with a threshold of 0.31% (calculated as 5% divided by the number of tests; one test per RSN).

The DR spatial maps show a significant effect for age in all modes, in voxels that are spatially consistent with the group PFM map. Furthermore, the DR amplitudes show a significant increase in network amplitudes with age for all modes, which indicates that the age effects are, at least partially, driven by this increased amplitude of network activity.

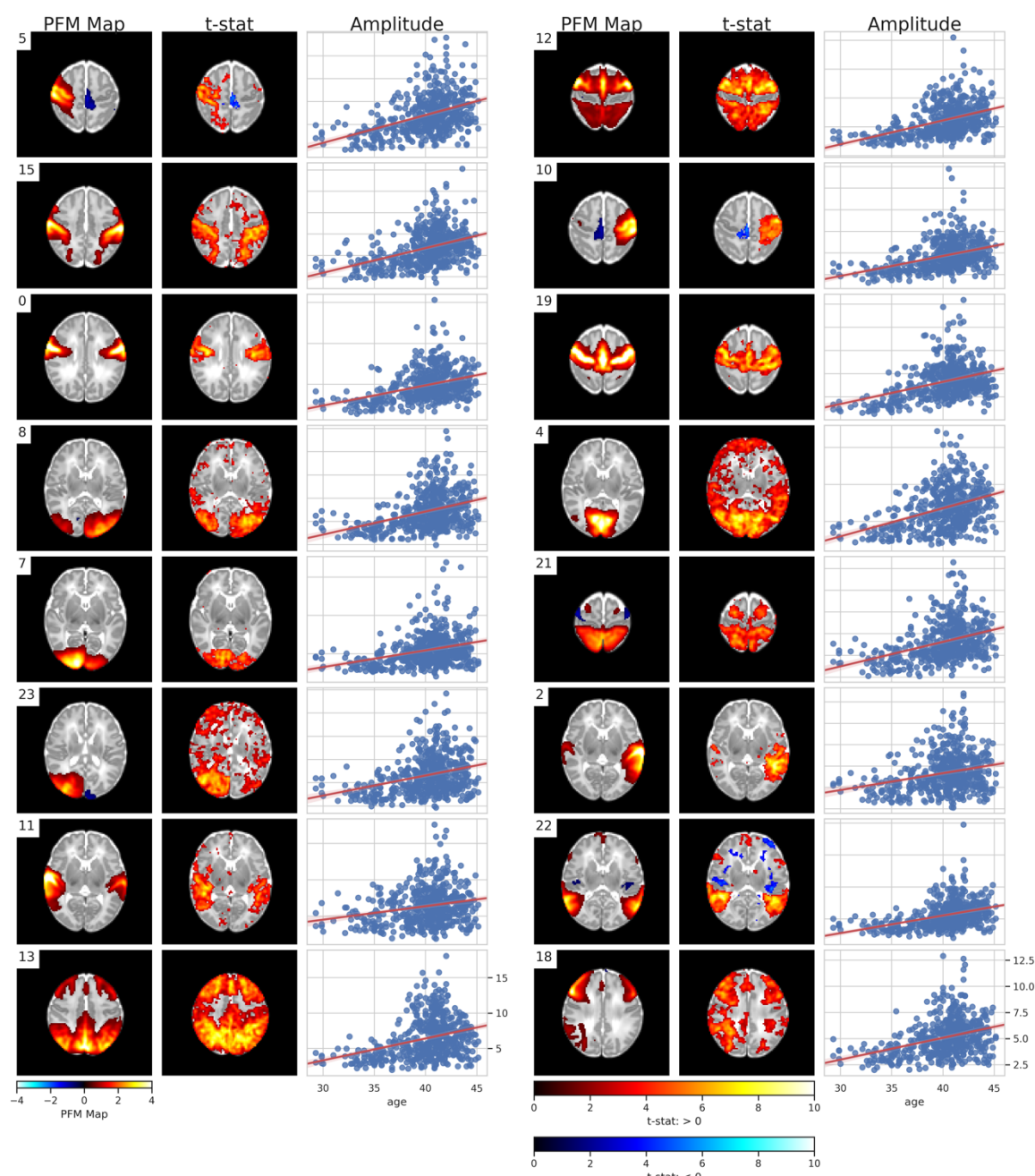


Figure 20. PROFUMO group spatial maps (PFM Map), t -statistic of age regressed on the DR spatial maps (t -stat), and DR amplitudes with age (Amplitude) for the 16 modes qualitative assessed as corresponding to adult resting-state networks. Age is the post-menstrual age-at-scan in weeks. Brain volume, mean DVARS, mean tSNR, and mean FD confounds are controlled. Only significant results are shown. Multiple comparison correction was achieved by FDR correction with a 0.31% threshold (calculated as 5% divided by the number of tests; one test per RSN)

4. Discussion

In this paper we present an automated and robust, open source pipeline to generate high-quality minimally pre-processed neonatal fMRI data. The pipeline was developed to pre-process the rfMRI data from the dHCP project for open-access release to the neuroimaging community. Using this pipeline on the dHCP neonatal cohort, we have been able to resolve 16 resting-state networks with fine spatial resolution that are consistent with adult networks from the Human Connectome Project. Furthermore, we have sufficient spatio-temporal granularity to demonstrate significant changes in shape and amplitude of these networks with development from 27-45 weeks post-menstrual age.

A strong motivation during development of the pipeline was that it should perform “minimal” pre-processing to ensure that the scientific community would not be restricted in the subsequent analysis that they can perform on the data (although the fully raw data is also being made available). To this end, we have sought to minimise pre-processing, particularly resampling, whilst maximising output quality. The pre-processing steps we have included were selected and evaluated to ensure they provided a robust and principled approach to mitigating the specific challenges of neonatal data. The pipeline was run on 538 subjects from the dHCP neonatal cohort and only 26 failed due to quality control restrictions. These failures were mostly due to poor registration of the structural T1w/T2w to the template/atlas space. This is discussed further below.

Automation was another key motivator in developing the pipeline. Given the number of subjects to be scanned as part of the dHCP project it was important to minimize manual intervention as much as possible. To this end, the pipeline is entirely automated including quality control and reporting. Operator intervention is required at only two stages, 1) to manually label a subset of independent components to train FIX, and 2) to visually inspect cases flagged by QC as outliers. Furthermore, the FIX classifier trained on dHCP data will be released along with the pipeline, which means that the first manual intervention step may be avoided if one’s data are sufficiently similar to the dHCP acquisition data.

Subject head motion is the most challenging confound observed in the dHCP neonatal cohort. This motion disrupts the BOLD signal and can result in slice misalignments, susceptibility-by-movement distortions, and spin history artefacts. Such artefacts are not typically dealt with in existing fMRI pre-processing pipelines. We present a novel application of the EDDY tool, which was originally designed for diffusion data, to correct for the slice misalignments and susceptibility-by-movement distortions. We further incorporate an ICA-based denoising procedure to remove spin-history effects and any residual motion artefacts. This ICA-based denoising can also account for a variety of other artefacts including multi-band artefacts, arteries, CSF pulsation, and sagittal sinus. As a consequence of these pre-processing strategies, we see large and significant improvement in tSNR across the whole brain, but particularly in cortical areas. This improvement is driven largely by a reduction in variation from the aforementioned artefacts.

An important consideration that needs to be made when using the pipeline is that EDDY can only be run using a GPU. The EDDY-based motion and distortion correction on a single dHCP subject (2300 volumes) takes 6-12 hours on a NVIDIA K80 GPU. If limited resources mean that EDDY is not viable, the pipeline can fallback to a (CPU-based) rigid-body volume-to-volume registration-based motion correction and static fieldmap-based distortion correction. An fMRI-specific version of EDDY is intended to be released in a future version of FSL.

The dHCP neonatal fMRI pipeline includes a robust registration framework to align the functional data with both the subject structural space (T2w) and the group standard space. Registration is made challenging by the rapidly changing size and gyrification of the neonatal brain, and the variable contrast caused by maturing myelination and the fast-multi-band EPI sequence. The protocol uses a series of primary registrations which can then be combined into composite transforms to move between the target spaces. Care was taken to achieve high-quality primary registrations so that alignment errors would not accumulate when creating the composite registrations. To this end, the BBR cost function was found to be superior for intra-subject registrations and was used wherever possible. The weakest link in

the registration protocol was the template-to-structural non-linear registration, which resulted in 18 subjects being excluded by the automated QC due to insufficient alignment quality. Ongoing work is examining improvements to this registration step, including using the GM probability as another registration channel, as per Makropoulos et al. (2018), and optimising the parameters of the registration tools.

The dHCP fMRI pipeline is not intended to be a single static release just for processing the dHCP data. During development we have focussed on flexibility and generalisability of the pipeline beyond the dHCP data. We have evaluated the pipeline on non-dHCP neonatal task fMRI data (Baxter et al., 2019), and collaborators within our centre have been evaluating the pipeline on non-neonatal data. To coincide with this paper, the first version of the pipeline will be released publicly (<https://git.fmrib.ox.ac.uk/seanf/dhcp-fmri-pipeline-release>) and this will mark the beginning of what we plan to be an ongoing, open, and hopefully collaborative, development process. To this end there is a roadmap of future features that are either already under development or planned:

1. We have developed bespoke methods (adapted from adult HCP pipelines) for mapping the fMRI data to the surface and writing out to CIFTI format. These methods are still under evaluation.
2. We are investigating alternative methods for dealing with contaminated fieldmaps, including the utility of a group average fieldmap.
3. An fMRI-specific version of EDDY is under development that will be faster as well as incorporating a model that is better suited to fMRI data.
4. Improvements to template-to-structural registration.
5. Partial BIDs derivatives support is implemented, but full support is planned.
6. Extensions for task fMRI have been developed and tested and will be merged into the pipeline

5. Conclusion

We have presented an automated and robust pipeline to minimally pre-process highly confounded neonatal data, robustly, with low failure rates and high quality-assurance. Processing refinements integrated into the dHCP fMRI framework provide substantial reduction in movement related distortions, resulting in significant improvements in SNR, and detection of high quality RSNs from neonates that are consistent with previously reported infant RSNs (Doria et al., 2010; Mongerson et al., 2017). Ongoing analyses are probing the fine structure of these networks, and their variability across subjects and age, with the aim of defining a multi-modal time-varying map of the neonatal connectome. The scientific community will be able to apply this pipeline to explore their own neonatal data, or to use publicly released dHCP data (pre-processed with this pipeline) to explore neonatal connectomics.

6. Conflict of interest

MJ, SS, and JA receive royalties from the commercial licensing of FSL (it is free for non-commercial use). The authors report no other conflicts of interest.

7. Acknowledgements

We are grateful to Dr Mark Chiew for advice on multi-band artefacts, and Assoc. Prof. Kenneth Pope for assistance with the neonatal HRF. The research leading to these results has received funding from the European Research Council under the European Union Seventh Framework Programme (FP/20072013)/ERC Grant Agreement no. 319456. We are grateful to the families who generously supported this trial. The work was supported by the NIHR

Biomedical Research Centres at Guys and St Thomas NHS Trust. The Wellcome Centre for Integrative Neuromaging is supported by core funding from the Wellcome Trust (203139/Z/16/Z). TA is supported by a MRC Clinician Scientist Fellowship [MR/P008712/1]. JA is supported by the Wellcome Trust Strategic Award (098369/Z/12/Z) and by the NIH Human Connectome Project (1U01MH109589-01 and 1U01AG052564-01). MJ is supported by the National Institute for Health Research (NIHR) Oxford Biomedical Research Centre (BRC). JOM is supported by a Sir Henry Dale Fellowship jointly funded by the Wellcome Trust and the Royal Society (Grant Number 206675/Z/17/Z). SRF is supported by the NIH Human Connectome Project (1U01MH109589-01 and 1U01AG052564-01). LB was funded via a Medical Research Council Studentship. SJH was supported by the grant #2017-403 of the Strategic Focus Area “Personalized Health and Related Technologies (PHRT)” of the ETH Domain.

8. References

- Ajayi-Obe, M., Saeed, N., Cowan, F., Rutherford, M., Edwards, A., 2000. Reduced development of cerebral cortex in extremely preterm infants. *The Lancet* 356, 1162–1163. [https://doi.org/10.1016/S0140-6736\(00\)02761-6](https://doi.org/10.1016/S0140-6736(00)02761-6)
- Alfaro-Almagro, F., Jenkinson, M., Bangerter, N.K., Andersson, J.L.R., Griffanti, L., Douaud, G., Sotiropoulos, S.N., Jbabdi, S., Hernandez-Fernandez, M., Vallee, E., Vidaurre, D., Webster, M., McCarthy, P., Rorden, C., Daducci, A., Alexander, D.C., Zhang, H., Dragonu, I., Matthews, P.M., Miller, K.L., Smith, S.M., 2018. Image processing and Quality Control for the first 10,000 brain imaging datasets from UK Biobank. *NeuroImage* 166, 400–424. <https://doi.org/10.1016/j.neuroimage.2017.10.034>
- Anderson, A.W., Marois, R., Colson, E.R., Peterson, B.S., Duncan, C.C., Ehrenkranz, R.A., Schneider, K.C., Gore, J.C., Ment, L.R., 2001. Neonatal auditory activation detected by functional magnetic resonance imaging. *Magn. Reson. Imaging* 19, 1–5. [https://doi.org/10.1016/S0730-725X\(00\)00231-9](https://doi.org/10.1016/S0730-725X(00)00231-9)
- Andersson, J.L.R., Graham, M.S., Drobniak, I., Zhang, H., Campbell, J., 2018. Susceptibility-induced distortion that varies due to motion: Correction in diffusion MR without acquiring additional data. *NeuroImage* 171, 277–295. <https://doi.org/10.1016/j.neuroimage.2017.12.040>
- Andersson, J.L.R., Graham, M.S., Drobniak, I., Zhang, H., Filippini, N., Bastiani, M., 2017. Towards a comprehensive framework for movement and distortion correction of diffusion MR images: Within volume movement. *NeuroImage* 152, 450–466. <https://doi.org/10.1016/j.neuroimage.2017.02.085>
- Andersson, J.L.R., Hutton, C., Ashburner, J., Turner, R., Friston, K., 2001. Modeling Geometric Deformations in EPI Time Series. *NeuroImage* 13, 903–919. <https://doi.org/10.1006/nimg.2001.0746>
- Andersson, J.L.R., Skare, S., Ashburner, J., 2003. How to correct susceptibility distortions in spin-echo echo-planar images: application to diffusion tensor imaging. *NeuroImage* 20, 870–888. [https://doi.org/10.1016/S1053-8119\(03\)00336-7](https://doi.org/10.1016/S1053-8119(03)00336-7)
- Arichi, T., Fagiolo, G., Varela, M., Melendez-Calderon, A., Allievi, A., Merchant, N., Tusor, N., Counsell, S.J., Burdet, E., Beckmann, C.F., Edwards, A.D., 2012. Development of BOLD signal hemodynamic responses in the human brain. *NeuroImage* 63, 663–673. <https://doi.org/10.1016/j.neuroimage.2012.06.054>
- Arichi, T., Gordon-Williams, R., Allievi, A., Groves, A.M., Burdet, E., Edwards, A.D., 2013. Computer-controlled stimulation for functional magnetic resonance imaging studies of the neonatal olfactory system. *Acta Paediatr.* 102, 868–875. <https://doi.org/10.1111/apa.12327>
- Arichi, T., Moraux, A., Melendez, A., Doria, V., Groppo, M., Merchant, N., Combs, S., Burdet, E., Larkman, D.J., Counsell, S.J., Beckmann, C.F., Edwards, A.D., 2010. Somatosensory cortical activation identified by functional MRI in preterm and term infants. *NeuroImage* 49, 2063–2071. <https://doi.org/10.1016/j.neuroimage.2009.10.038>
- Avants, B.B., Epstein, C.L., Grossman, M., Gee, J.C., 2008. Symmetric diffeomorphic image registration with cross-correlation: Evaluating automated labeling of elderly and

- neurodegenerative brain. *Med. Image Anal.* 12, 26–41.
<https://doi.org/10.1016/j.media.2007.06.004>
- Bastiani, M., Andersson, J.L.R., Cordero-Grande, L., Murgasova, M., Hutter, J., Price, A.N., Makropoulos, A., Fitzgibbon, S.P., Hughes, E., Rueckert, D., Victor, S., Rutherford, M., Edwards, A.D., Smith, S.M., Tournier, J.-D., Hajnal, J.V., Jbabdi, S., Sotiropoulos, S.N., 2018. Automated processing pipeline for neonatal diffusion MRI in the developing Human Connectome Project. *NeuroImage*.
<https://doi.org/10.1016/j.neuroimage.2018.05.064>
- Baxter, L., Fitzgibbon, S., Moultrie, F., Goksan, S., Jenkinson, M., Smith, S., Andersson, J., Duff, E., Slater, R., 2019. Optimising neonatal fMRI data analysis: Design and validation of an extended dHCP preprocessing pipeline to characterise noxious-evoked brain activity in infants. *NeuroImage* 186, 286–300.
<https://doi.org/10.1016/j.neuroimage.2018.11.006>
- Beckmann, C.F., Smith, S.M., 2004. Probabilistic independent component analysis for functional magnetic resonance imaging. *IEEE Trans. Med. Imaging* 23, 137–152.
<https://doi.org/10.1109/TMI.2003.822821>
- Blasi, A., Mercure, E., Lloyd-Fox, S., Thomson, A., Brammer, M., Sauter, D., Deeley, Q., Barker, G.J., Renvall, V., Deoni, S., Gasston, D., Williams, S.C.R., Johnson, M.H., Simmons, A., Murphy, D.G.M., 2011. Early specialization for voice and emotion processing in the infant brain. *Curr. Biol. CB* 21, 1220–1224.
<https://doi.org/10.1016/j.cub.2011.06.009>
- Bozek, J., Makropoulos, A., Schuh, A., Fitzgibbon, S., Wright, R., Glasser, M.F., Coalson, T.S., O’Muircheartaigh, J., Hutter, J., Price, A.N., Cordero-Grande, L., Teixeira, R.P.A.G., Hughes, E., Tusor, N., Baruteau, K.P., Rutherford, M.A., Edwards, A.D., Hajnal, J.V., Smith, S.M., Rueckert, D., Jenkinson, M., Robinson, E.C., 2018. Construction of a neonatal cortical surface atlas using Multimodal Surface Matching in the Developing Human Connectome Project. *NeuroImage* 179, 11–29. <https://doi.org/10.1016/j.neuroimage.2018.06.018>
- Cordero-Grande, L., Hughes, E.J., Hutter, J., Price, A.N., Hajnal, J.V., 2018. Three-dimensional motion corrected sensitivity encoding reconstruction for multi-shot multi-slice MRI: Application to neonatal brain imaging: Aligned Multi-Shot Multi-Slice MRI. *Magn. Reson. Med.* 79, 1365–1376.
<https://doi.org/10.1002/mrm.26796>
- Cornelissen, L., Fabrizi, L., Patten, D., Worley, A., Meek, J., Boyd, S., Slater, R., Fitzgerald, M., 2013. Postnatal Temporal, Spatial and Modality Tuning of Nociceptive Cutaneous Flexion Reflexes in Human Infants. *PLOS ONE* 8, e76470.
<https://doi.org/10.1371/journal.pone.0076470>
- Cusack, R., Linke, A., Zubiaurre-Elorza, L., Duffy, H., Herzmann, C., Stojanoski, B., Han, V., Lee, D.S., Wild, C., 2017. Differences in the spatial and temporal patterns of head motion during MRI of adults and infants. *bioRxiv* 114447.
<https://doi.org/10.1101/114447>
- Damaraju, E., Caprihan, A., Lowe, J.R., Allen, E.A., Calhoun, V.D., Phillips, J.P., 2014. Functional connectivity in the developing brain: A longitudinal study from 4 to 9months of age. *NeuroImage* 84, 169–180.
<https://doi.org/10.1016/j.neuroimage.2013.08.038>
- Deen, B., Richardson, H., Dilks, D.D., Takahashi, A., Keil, B., Wald, L.L., Kanwisher, N., Saxe, R., 2017. Organization of high-level visual cortex in human infants. *Nat. Commun.* 8, 13995. <https://doi.org/10.1038/ncomms13995>
- Dehaene-Lambertz, G., Dehaene, S., Hertz-Pannier, L., 2002. Functional Neuroimaging of Speech Perception in Infants. *Science* 298, 2013–2015.
<https://doi.org/10.1126/science.1077066>
- Doria, V., Beckmann, C.F., Arichi, T., Merchant, N., Groppo, M., Turkheimer, F.E., Counsell, S.J., Murgasova, M., Aljabar, P., Nunes, R.G., Larkman, D.J., Rees, G., Edwards, A.D., 2010. Emergence of resting state networks in the preterm human brain. *Proc. Natl. Acad. Sci.* 107, 20015–20020. <https://doi.org/10.1073/pnas.1007921107>
- Dubois, J., Dehaene-Lambertz, G., Kulikova, S., Poupon, C., Hüppi, P.S., Hertz-Pannier, L., 2014. The early development of brain white matter: A review of imaging studies

- in fetuses, newborns and infants. *Neuroscience, Secrets of the CNS White Matter* 276, 48–71. <https://doi.org/10.1016/j.neuroscience.2013.12.044>
- Fransson, P., Skiöld, B., Horsch, S., Nordell, A., Blennow, M., Lagercrantz, H., Åden, U., 2007. Resting-state networks in the infant brain. *Proc. Natl. Acad. Sci.* 104, 15531–15536. <https://doi.org/10.1073/pnas.0704380104>
- Gao, W., Alcauter, S., Smith, J.K., Gilmore, J.H., Lin, W., 2015. Development of human brain cortical network architecture during infancy. *Brain Struct. Funct.* 220, 1173–1186. <https://doi.org/10.1007/s00429-014-0710-3>
- Ghiglia, D.C., Romero, L.A., 1994. Robust two-dimensional weighted and unweighted phase unwrapping that uses fast transforms and iterative methods. *JOSA A* 11, 107–117. <https://doi.org/10.1364/JOSAA.11.000107>
- Gilmore, J.H., Shi, F., Woolson, S.L., Knickmeyer, R.C., Short, S.J., Lin, W., Zhu, H., Hamer, R.M., Styner, M., Shen, D., 2012. Longitudinal Development of Cortical and Subcortical Gray Matter from Birth to 2 Years. *Cereb. Cortex* 22, 2478–2485. <https://doi.org/10.1093/cercor/bhr327>
- Glasser, M.F., Sotiropoulos, S.N., Wilson, J.A., Coalson, T.S., Fischl, B., Andersson, J.L., Xu, J., Jbabdi, S., Webster, M., Polimeni, J.R., Van Essen, D.C., Jenkinson, M., 2013. The minimal preprocessing pipelines for the Human Connectome Project. *NeuroImage, Mapping the Connectome* 80, 105–124. <https://doi.org/10.1016/j.neuroimage.2013.04.127>
- Goksan, S., Hartley, C., Emery, F., Cockrill, N., Poorun, R., Moultrie, F., Rogers, R., Campbell, J., Sanders, M., Adams, E., Clare, S., Jenkinson, M., Tracey, I., Slater, R., 2015. fMRI reveals neural activity overlap between adult and infant pain. *eLife* 4, e06356. <https://doi.org/10.7554/eLife.06356>
- Goksan, S., Hartley, C., Hurley, S.A., Winkler, A.M., Duff, E.P., Jenkinson, M., Rogers, R., Clare, S., Slater, R., 2017. Optimal echo time for functional MRI of the infant brain identified in response to noxious stimulation. *Magn. Reson. Med.* 78, 625–631. <https://doi.org/10.1002/mrm.26455>
- Graham, A.M., Fisher, P.A., Pfeifer, J.H., 2013. What Sleeping Babies Hear: An fMRI Study of Interparental Conflict and Infants' Emotion Processing. *Psychol. Sci.* 24, 782–789. <https://doi.org/10.1177/0956797612458803>
- Greve, D.N., Fischl, B., 2009. Accurate and robust brain image alignment using boundary-based registration. *NeuroImage* 48, 63–72. <https://doi.org/10.1016/j.neuroimage.2009.06.060>
- Griffanti, L., Douaud, G., Bijsterbosch, J., Evangelisti, S., Alfaro-Almagro, F., Glasser, M.F., Duff, E.P., Fitzgibbon, S., Westphal, R., Carone, D., Beckmann, C.F., Smith, S.M., 2017. Hand classification of fMRI ICA noise components. *Neuroimage* 154, 188–205. <https://doi.org/10.1016/j.neuroimage.2016.12.036>
- Harrison, S.J., Woolrich, M.W., Robinson, E.C., Glasser, M.F., Beckmann, C.F., Jenkinson, M., Smith, S.M., 2015. Large-scale Probabilistic Functional Modes from resting state fMRI. *NeuroImage* 109, 217–231. <https://doi.org/10.1016/j.neuroimage.2015.01.013>
- Hughes, E.J., Winchman, T., Padormo, F., Teixeira, R., Wurie, J., Sharma, M., Fox, M., Hutter, J., Cordero-Grande, L., Price, A.N., Allsop, J., Bueno-Conde, J., Tusor, N., Arichi, T., Edwards, A.D., Rutherford, M.A., Counsell, S.J., Hajnal, J.V., 2017. A dedicated neonatal brain imaging system. *Magn. Reson. Med.* 78, 794–804. <https://doi.org/10.1002/mrm.26462>
- Inder, T.E., Huppi, P.S., Warfield, S., Kikinis, R., Zientara, G.P., Barnes, P.D., Jolesz, F., Volpe, J.J., 1999. Periventricular white matter injury in the premature infant is followed by reduced cerebral cortical gray matter volume at term. *Ann. Neurol.* 46, 755–760. [https://doi.org/10.1002/1531-8249\(199911\)46:5<755::AID-ANA11>3.0.CO;2-0](https://doi.org/10.1002/1531-8249(199911)46:5<755::AID-ANA11>3.0.CO;2-0)
- Jenkinson, M., Bannister, P., Brady, M., Smith, S., 2002. Improved Optimization for the Robust and Accurate Linear Registration and Motion Correction of Brain Images. *NeuroImage* 17, 825–841. <https://doi.org/10.1006/nimg.2002.1132>
- Jenkinson, M., Beckmann, C.F., Behrens, T.E.J., Woolrich, M.W., Smith, S.M., 2012. FSL. *NeuroImage, 20 YEARS OF fMRI* 62, 782–790. <https://doi.org/10.1016/j.neuroimage.2011.09.015>

- Jenkinson, M., Smith, S., 2001. A global optimisation method for robust affine registration of brain images. *Med. Image Anal.* 5, 143–156.
[https://doi.org/10.1016/S1361-8415\(01\)00036-6](https://doi.org/10.1016/S1361-8415(01)00036-6)
- Kaiser, M., 2017. Mechanisms of Connectome Development. *Trends Cogn. Sci.* 21, 703–717. <https://doi.org/10.1016/j.tics.2017.05.010>
- Kapellou, O., Counsell, S.J., Kennea, N., Dyet, L., Saeed, N., Stark, J., Maalouf, E., Duggan, P., Ajayi-Obe, M., Hajnal, J., Allsop, J.M., Boardman, J., Rutherford, M.A., Cowan, F., Edwards, A.D., 2006. Abnormal Cortical Development after Premature Birth Shown by Altered Allometric Scaling of Brain Growth. *PLOS Med.* 3, e265.
<https://doi.org/10.1371/journal.pmed.0030265>
- Kozberg, M., Hillman, E., 2016a. Neurovascular coupling and energy metabolism in the developing brain. *Prog. Brain Res.* 225, 213–242.
<https://doi.org/10.1016/bs.pbr.2016.02.002>
- Kozberg, M., Hillman, E., 2016b. Neurovascular coupling and energy metabolism in the developing brain, in: Masamoto, K., Hirase, H., Yamada, K. (Eds.), *Progress in Brain Research, New Horizons in Neurovascular Coupling: A Bridge Between Brain Circulation and Neural Plasticity*. Elsevier, pp. 213–242.
<https://doi.org/10.1016/bs.pbr.2016.02.002>
- Kuklisova-Murgasova, M., Aljabar, P., Srinivasan, L., Counsell, S.J., Doria, V., Serag, A., Gousias, I.S., Boardman, J.P., Rutherford, M.A., Edwards, A.D., Hajnal, J.V., Rueckert, D., 2011. A dynamic 4D probabilistic atlas of the developing brain. *NeuroImage* 54, 2750–2763. <https://doi.org/10.1016/j.neuroimage.2010.10.019>
- Kuklisova-Murgasova, M., Quaghebeur, G., Rutherford, M.A., Hajnal, J.V., Schnabel, J.A., 2012. Reconstruction of fetal brain MRI with intensity matching and complete outlier removal. *Med. Image Anal.* 16, 1550–1564.
<https://doi.org/10.1016/j.media.2012.07.004>
- Lin, W., Zhu, Q., Gao, W., Chen, Y., Toh, C.-H., Styner, M., Gerig, G., Smith, J.K., Biswal, B., Gilmore, J.H., 2008. Functional Connectivity MR Imaging Reveals Cortical Functional Connectivity in the Developing Brain. *Am. J. Neuroradiol.* 29, 1883–1889. <https://doi.org/10.3174/ajnr.A1256>
- Liu, W.-C., Flax, J.F., Guise, K.G., Sukul, V., Benasich, A.A., 2008. Functional connectivity of the sensorimotor area in naturally sleeping infants. *Brain Res.* 1223, 42–49.
<https://doi.org/10.1016/j.brainres.2008.05.054>
- Makropoulos, A., Robinson, E.C., Schuh, A., Wright, R., Fitzgibbon, S., Bozek, J., Counsell, S.J., Steinweg, J., Vecchiato, K., Passerat-Palmbach, J., Lenz, G., Mortari, F., Tenev, T., Duff, E.P., Bastiani, M., Cordero-Grande, L., Hughes, E., Tusor, N., Tournier, J.-D., Hutter, J., Price, A.N., Teixeira, R.P.A.G., Murgasova, M., Victor, S., Kelly, C., Rutherford, M.A., Smith, S.M., Edwards, A.D., Hajnal, J.V., Jenkinson, M., Rueckert, D., 2018. The developing human connectome project: A minimal processing pipeline for neonatal cortical surface reconstruction. *NeuroImage* 173, 88–112.
<https://doi.org/10.1016/j.neuroimage.2018.01.054>
- Mongerson, C.R.L., Jennings, R.W., Borsook, D., Becerra, L., Bajic, D., 2017. Resting-State Functional Connectivity in the Infant Brain: Methods, Pitfalls, and Potentiality. *Front. Pediatr.* 5. <https://doi.org/10.3389/fped.2017.00159>
- Nickerson, L.D., Smith, S.M., Öngür, D., Beckmann, C.F., 2017. Using Dual Regression to Investigate Network Shape and Amplitude in Functional Connectivity Analyses. *Front. Neurosci.* 11. <https://doi.org/10.3389/fnins.2017.00115>
- Okudera, T., Huang, Y.P., Ohta, T., Yokota, A., Nakamura, Y., Maehara, F., Utsunomiya, H., Uemura, K., Fukasawa, H., 1994. Development of posterior fossa dural sinuses, emissary veins, and jugular bulb: morphological and radiologic study. *AJNR Am. J. Neuroradiol.* 15, 1871–1883.
- Parkes, L., Fulcher, B., Yücel, M., Fornito, A., 2018. An evaluation of the efficacy, reliability, and sensitivity of motion correction strategies for resting-state functional MRI. *NeuroImage* 171, 415–436.
<https://doi.org/10.1016/j.neuroimage.2017.12.073>
- Power, J.D., 2017. A simple but useful way to assess fMRI scan qualities. *NeuroImage, Cleaning up the fMRI time series: Mitigating noise with advanced acquisition and*

- correction strategies 154, 150–158.
<https://doi.org/10.1016/j.neuroimage.2016.08.009>
- Power, J.D., Barnes, K.A., Snyder, A.Z., Schlaggar, B.L., Petersen, S.E., 2012. Spurious but systematic correlations in functional connectivity MRI networks arise from subject motion. *NeuroImage* 59, 2142–2154.
<https://doi.org/10.1016/j.neuroimage.2011.10.018>
- Power, J.D., Mitra, A., Laumann, T.O., Snyder, A.Z., Schlaggar, B.L., Petersen, S.E., 2014. Methods to detect, characterize, and remove motion artifact in resting state fMRI. *NeuroImage* 84. <https://doi.org/10.1016/j.neuroimage.2013.08.048>
- Price, A., Cordero-Grande, L., Malik, S., Abaei, M., Arichi, T., Hughes, E., Rueckert, D., Edwards, A., Hajnal, J., 2015. Accelerated neonatal fMRI using multiband EPI, in: *Proceedings of the 23rd Annual Meeting of ISMRM, Toronto, Canada*. p. 3911.
- Rivkin, M.J., Wolraich, D., Als, H., McAnulty, G., Butler, S., Conneman, N., Fischer, C., Vajapeyam, S., Robertson, R.L., Mulkern, R.V., 2004. Prolonged T values in newborn versus adult brain: Implications for fMRI studies of newborns. *Magn. Reson. Med.* 51, 1287–1291. <https://doi.org/10.1002/mrm.20098>
- Salimi-Khorshidi, G., Douaud, G., Beckmann, C.F., Glasser, M.F., Griffanti, L., Smith, S.M., 2014. Automatic denoising of functional MRI data: Combining independent component analysis and hierarchical fusion of classifiers. *NeuroImage* 90, 449–468. <https://doi.org/10.1016/j.neuroimage.2013.11.046>
- Satterthwaite, T.D., Elliott, M.A., Gerraty, R.T., Ruparel, K., Loughhead, J., Calkins, M.E., Eickhoff, S.B., Hakonarson, H., Gur, R.C., Gur, R.E., Wolf, D.H., 2013. An improved framework for confound regression and filtering for control of motion artifact in the preprocessing of resting-state functional connectivity data. *NeuroImage* 64, 240–256. <https://doi.org/10.1016/j.neuroimage.2012.08.052>
- Satterthwaite, T.D., Wolf, D.H., Loughhead, J., Ruparel, K., Elliott, M.A., Hakonarson, H., Gur, R.C., Gur, R.E., 2012. Impact of in-scanner head motion on multiple measures of functional connectivity: Relevance for studies of neurodevelopment in youth. *NeuroImage* 60, 623–632. <https://doi.org/10.1016/j.neuroimage.2011.12.063>
- Schuh, A., Makropoulos, A., Robinson, E.C., Cordero-Grande, L., Hughes, E., Hutter, J., Price, A.N., Murgasova, M., Teixeira, R.P.A.G., Tusor, N., Steinweg, J.K., Victor, S., Rutherford, M.A., Hajnal, J.V., Edwards, A.D., Rueckert, D., 2018. Unbiased construction of a temporally consistent morphological atlas of neonatal brain development. *bioRxiv* 251512. <https://doi.org/10.1101/251512>
- Shi, F., Salzwedel, A.P., Lin, W., Gilmore, J.H., Gao, W., 2018. Functional Brain Parcellations of the Infant Brain and the Associated Developmental Trends. *Cereb. Cortex* 28, 1358–1368. <https://doi.org/10.1093/cercor/bhx062>
- Smith, S.M., Beckmann, C.F., Andersson, J., Auerbach, E.J., Bijsterbosch, J., Douaud, G., Duff, E., Feinberg, D.A., Griffanti, L., Harms, M.P., Kelly, M., Laumann, T., Miller, K.L., Moeller, S., Petersen, S., Power, J., Salimi-Khorshidi, G., Snyder, A.Z., Vu, A.T., Woolrich, M.W., Xu, J., Yacoub, E., Ugurbil, K., Van Essen, D.C., Glasser, M.F., 2013. Resting-state fMRI in the Human Connectome Project. *NeuroImage, Mapping the Connectome* 80, 144–168. <https://doi.org/10.1016/j.neuroimage.2013.05.039>
- Smith, S.M., Brady, J.M., 1997. SUSAN—A New Approach to Low Level Image Processing. *Int. J. Comput. Vis.* 23, 45–78. <https://doi.org/10.1023/A:1007963824710>
- Smyser, C.D., Inder, T.E., Shimony, J.S., Hill, J.E., Degnan, A.J., Snyder, A.Z., Neil, J.J., 2010. Longitudinal Analysis of Neural Network Development in Preterm Infants. *Cereb. Cortex* 20, 2852–2862. <https://doi.org/10.1093/cercor/bhq035>
- Smyser, C.D., Snyder, A.Z., Shimony, J.S., Mitra, A., Inder, T.E., Neil, J.J., 2016. Resting-State Network Complexity and Magnitude Are Reduced in Prematurely Born Infants. *Cereb. Cortex* 26, 322–333. <https://doi.org/10.1093/cercor/bhu251>
- Van Essen, D.C., Smith, S.M., Barch, D.M., Behrens, T.E.J., Yacoub, E., Ugurbil, K., 2013. The WU-Minn Human Connectome Project: An overview. *NeuroImage, Mapping the Connectome* 80, 62–79. <https://doi.org/10.1016/j.neuroimage.2013.05.041>
- Winkler, A.M., Ridgway, G.R., Webster, M.A., Smith, S.M., Nichols, T.E., 2014. Permutation inference for the general linear model. *NeuroImage* 92, 381–397. <https://doi.org/10.1016/j.neuroimage.2014.01.060>

- Woolrich, M.W., Behrens, T.E.J., Smith, S.M., 2004. Constrained linear basis sets for HRF modelling using Variational Bayes. *NeuroImage* 21, 1748–1761.
<https://doi.org/10.1016/j.neuroimage.2003.12.024>
- Zhu, K., Dougherty, R.F., Wu, H., Miodone, M.J., Takahashi, A.M., Zhang, T., Pauly, J.M., Kerr, A.B., 2016. Hybrid-Space SENSE Reconstruction for Simultaneous Multi-Slice MRI. *IEEE Trans. Med. Imaging* 35, 1824–1836.
<https://doi.org/10.1109/TMI.2016.2531635>

9. Supplementary

9.1. Detailed registration methods

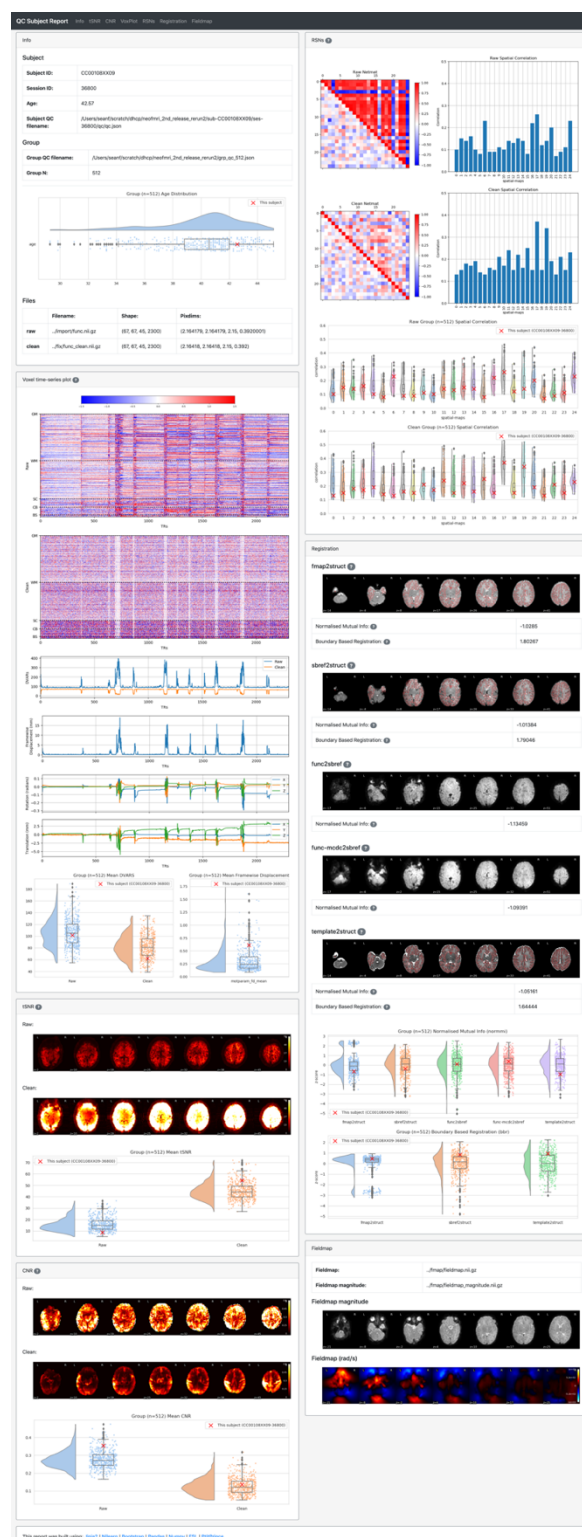
Primary registrations:

1. *fieldmap-to-structural*: rigidly align the derived fieldmap magnitude image (see Section 3.2) to the native structural T2w space using FSL FLIRT (Jenkinson et al., 2002; Jenkinson and Smith, 2001). A boundary-based registration (BBR) (Greve and Fischl, 2009) cost function is used if the fieldmap was derived from the spin-echo using TOPUP. However, the correlation ratio cost function is used if the fieldmap was derived from the gradient-echo, because the magnitude image lacked sufficient anatomical detail for BBR. The fieldmap-to-structural transform is then applied to re-sample the fieldmap image into the native structural space.
2. *sbref-to-structural*: rigidly align the single-band EPI image (sbref) with the native structural T2w space and correct for susceptibility distortions in the sbref using FSL FLIRT, with the BBR cost function, and FSL FUGUE. This step requires the fieldmap to be in the native structural space (calculated in the previous registration stage) to correct for susceptibility distortions in the sbref.
3. *functional-to-sbref (distorted)*: rigidly align the functional multiband EPI image with the sbref using FSL FLIRT with the default correlation ratio cost function. This registration step is performed prior to susceptibility distortion correction of the functional multiband EPI as described in Section 3.4, therefore both the functional multiband EPI image and the sbref will contain susceptibility distortions. The first volume of the functional multiband EPI is used as the source (moving) image in this registration because the subsequent motion correction and distortion correction stage defines the functional space from the first volume (see Section 3.4).
4. *functional-to-sbref (undistorted)*: after motion correction and distortion correction, rigidly align the distortion-corrected functional multiband EPI image with the distortion-corrected sbref using FSL FLIRT with the default correlation ratio cost function. All volumes in the corrected functional multiband EPI image are aligned as consequence of the motion correction, therefore the temporal mean is used as the source (moving) image in this registration as it typically has superior SNR compared to a single volume.
5. *template-to-structural*: align the structural image to the dHCP volumetric template (Schuh et al., 2018). Template-to-structural registration is performed with a multi-modal non-linear registration (ANTs SyN)(Avants et al., 2008) of the age-matched T1w and T2w template to the subject's T1w and T2w structural, which is then combined with the appropriate atlas week-to-week transforms to yield a (40 week) template-to-structural transform. We also evaluated FSL FNIRT (Jenkinson et al., 2012) and MIRTk Register (Similarity+Affine+FFD transformation model) (Schuh et al., 2018) and found that Register achieved excellent alignment but was not sufficiently regularised, resulting in inversion inaccuracy, whilst FNIRT was well regularised but did not produce alignments with sufficient accuracy (data not shown). We expect that good results could be achieved with both tools if their parameters were optimised, however ANTs SyN provided a good trade-off between alignment and regularisation with minimal parameterisation. In the event that the age of the subject is outside the range covered by the atlas, the closest template age within the atlas is used. Furthermore, some subjects do not have a T1w image, so in this instance only the T2w is used.

Composite registrations:

1. *fieldmap-to-functional*: constructed by combining the fieldmap-to-structural transform with the inverse sbref-to-structural and inverse functional-to-sbref (distorted) transforms. This allows for the fieldmap to be resampled to the native functional space, which is essential for the subsequent motion correction and distortion correction (Section 3.4). We have found that aligning the fieldmap with the functional via the structural is very robust and precise, largely because both sub-steps use BBR cost functions.
2. *functional-to-structural (undistorted)*: constructed by combining the functional-to-sbref (undistorted) affine with the sbref-to-structural affine, which yields a linear transform that aligns the motion and distortion corrected functional multiband EPI with structural T2w.
3. *functional-to-template (undistorted)*: constructed by combining the functional-to-structural (undistorted) transform with the inverse template-to-structural transform to yield the functional-to-template (undistorted) non-linear transform to align the motion and distortion corrected functional multiband EPI with the 40-week dHCP template space with a single resampling.

11. Supplementary Figures



Supplementary Figure 1. Screen shot of automated QC report for a single subject. The fMRI pipeline automatically calculates a number of QC metrics (MP, DVARS, FD, tSNR, CNR, NMI; see Table 2) and generates this HTML QC report for each subject. The report presents each QC metric for the individual within the context of the group distribution for the corresponding metric. Additionally, the report also presents descriptive/qualitative summaries of the subject's data quality in the form of "carpet plots" and spatial maps for each metric as applicable. The report generation tool utilises a variety of open source packages including Jinja2 (<http://jinja.pocoo.org/docs/2.10/>), Bootstrap (<https://getbootstrap.com/>), Pandas (<https://pandas.pydata.org/>), Numpy (<https://www.numpy.org/>), Seaborn (<https://seaborn.pydata.org/>), Nilearn (<http://nilearn.github.io/>), FSL (<https://fsl.fmrib.ox.ac.uk/fsl/fslwiki/>), and PtiPrince (<https://github.com/pog87/PtiPrince>).