

RUNNING HEAD: fMRI SUBJECTIVE VALUE AND DOPAMINE D2 RECEPTORS

Mesolimbic dopamine D2 receptors and neural representations of subjective value

Jaime J. Castrellon^{1,2}, Jacob S. Young², Linh C. Dang³, Ronald L. Cowan^{3,4,5}, David H. Zald^{3,4}, Gregory R. Samanez-Larkin^{1,2}

¹Department of Psychology and Neuroscience, Duke University

²Center for Cognitive Neuroscience, Duke University

²Department of Neurological Surgery, University of California, San Francisco

³Department of Psychology, Vanderbilt University

⁴Department of Psychiatry and Behavioral Sciences, Vanderbilt University School of Medicine

⁵Department of Radiology and Radiological Sciences, Vanderbilt University Medical Center

Author Note: Some of the results reported in this manuscript were presented in a poster at the annual meeting of the Cognitive Neuroscience Society (2018) and the Society for Neuroeconomics (2018). Correspondence concerning this article should be addressed to Jaime Castrellon, Center for Cognitive Neuroscience, Duke University, Box 90999, Durham, NC 27708. Email: jaime.castrellon@duke.edu

Acknowledgements: This research was supported by National Institute on Drug Abuse grant R21-DA033611.

Data Availability: Raw fMRI and PET data used in the manuscript can be viewed and downloaded from OpenNeuro (<https://openneuro.org/datasets/ds002041>).

Unthresholded voxelwise statistical fMRI maps can be viewed and downloaded on

RUNNING HEAD: fMRI SUBJECTIVE VALUE AND DOPAMINE D2 RECEPTORS

NeuroVault (<https://neurovault.org/collections/PDSRXDAH/>). Data and code used in analyses can be viewed and downloaded on OSF (<https://osf.io/6p4rk/>).

Author Contributions: D.H.Z. and G.R.S.-L. conceived and designed the research. J.S.Y., G.R.S.-L., L.C.D., and R.L.C. collected the data. J.J.C. analyzed the data with input from G.R.S.-L. J.J.C wrote the manuscript. D.H.Z. and G.R.S.L. revised the manuscript. All authors approved the final version.

Competing Interests: The authors declare no competing interests.

Abstract

The process by which the value of delayed rewards is discounted varies from person to person. It has been suggested that these individual differences in subjective valuation of delayed rewards are supported by mesolimbic dopamine D2-like receptors (D2Rs) in the ventral striatum. However, no study to date has documented an association between direct measures of dopamine receptors and neural representations of subjective value in humans. Here, we examined whether individual differences in D2R availability were related to neural subjective value signals during decision making. Human participants completed a monetary delay discounting task during an fMRI scan and on a separate visit completed a PET scan with the high affinity D2R tracer [18F]fallypride. Region-of-interest analyses revealed that D2R availability in the ventral striatum was positively correlated with subjective value-related activity in the ventromedial prefrontal cortex and midbrain but not with choice behavior. Whole-brain analyses revealed a positive correlation between ventral striatum D2R availability and

RUNNING HEAD: fMRI SUBJECTIVE VALUE AND DOPAMINE D2 RECEPTORS

subjective value-related activity in the left inferior frontal gyrus. These findings are the first to identify a link between directly-measured mesolimbic dopamine function and subjective value representation in humans and suggest a mechanism by which individuals vary in neural representation of discounted subjective value.

Keywords: delay discounting, impulsivity, fMRI, PET, dopamine, subjective value

Introduction

Nearly all behavioral decisions involve judgements about the value of desired outcomes. Intuitively, all animals should choose actions that maximize outcome values when comparing multiple options that vary in costs and benefits. However, animals, including humans, vary in their decision preferences. For example, to some individuals, the subjective value of a small, certain outcome exceeds the subjective value of a much larger, uncertain outcome even if the expected value (i.e., probability of obtaining a reward multiplied by the reward amount) of the uncertain option is numerically greater. Similarly, humans regularly spend money now that would have much more spending power later if saved and invested. This tendency to discount the future such that the subjective value of a larger, delayed reward is lower than a smaller reward available now is common across many animal species.

Neuroimaging research has shown that although similar networks of regions represent subjective value across individuals, both behavioral preferences and neural representations of subjective value are also highly variable between people¹. What, then, accounts for differences between people? Some have suggested that specific

RUNNING HEAD: fMRI SUBJECTIVE VALUE AND DOPAMINE D2 RECEPTORS

neurotransmitters, such as dopamine (DA), may influence subjective value computation and account for variation in neural representations¹⁻³. While many studies using non-human primates or rodents have linked direct measurement of DA levels or the activity of DA-releasing cells to discounting behavior and subjective value coding⁴, no study to date has explored individual differences in direct measures of dopamine function and neural representations of subjective value.

Functional MRI (fMRI) studies have consistently shown that subjective value is reflected in modulation of brain activation in a network of regions including the ventromedial prefrontal cortex (vmPFC), ventral striatum (VS), and posterior cingulate cortex (PCC)^{5,6}. Since subjective value scales with DA signals in the VS in nonhuman models, DA measures might vary with individual differences in subjective valuation. Direct recordings from midbrain DA neurons in monkeys and rodents provide evidence that DA neurons are sensitive to the subjective value of rewards over decreasing delays⁷⁻⁹. Providing indirect support for this mesolimbic DA narrative in humans, pharmacological manipulation of D2Rs in humans impacts delay discounting behavior¹⁰. However, the regional non-specificity of drugs that target D2Rs¹¹ limits attempts to detail the role of specific regions in this circuit, especially since D2Rs are present across the striatum and cortex^{12,13}.

Although these studies demonstrate the impact of DA on discounting behavior, less is known about how it impacts neural subjective value signals. There are two signaling pathways that may account for effects of DA on discounting: (1.) the corticostriatal loop¹⁴ may account for mesolimbic DA influences on prefrontal inputs to the VS^{15,16} and (2.) the ventral striatopallidal loop may account for interactions between

RUNNING HEAD: fMRI SUBJECTIVE VALUE AND DOPAMINE D2 RECEPTORS

the VS and midbrain DA^{17,18}. Potentially, individual differences in the components of either of these signaling pathways might underlie differences in prefrontal, striatal, or midbrain value computation. We therefore hypothesized that individual differences in D2R availability would correlate with subjective value signals in regions encoding subjective value. Based on previous research with both human and non-human animals, we had the strongest predictions for associations of D2Rs in the ventral striatum and midbrain with subjective value signals in ventral striatum, midbrain, and vmPFC. However, we explored multiple potential associations between the VS, midbrain, vmPFC, and PCC due to evidence from functional neuroimaging studies for subjective value signals in the PCC as well⁵.

In this study, healthy young adults completed a delay discounting task for monetary rewards during an fMRI scan. On a separate visit, we collected direct measures of DA D2R availability using positron emission tomography (PET) combined with the high affinity D2R ligand [18F]fallypride. We examined whether individual differences in measures of D2R availability were related to discounted subjective value representations in the brain.

Methods

Participants and screening procedures

Twenty-five healthy young adults (ages 18-24, M=20.9, SD=1.83, 13 females) were recruited from Vanderbilt University, Nashville, TN in 2012. Participants were subject to the following exclusion criteria: any history of psychiatric illness on a screening interview (a Structural Interview for Clinical DSM-IV Diagnosis was available

RUNNING HEAD: fMRI SUBJECTIVE VALUE AND DOPAMINE D2 RECEPTORS

for all subjects and confirmed no history of major Axis I disorders)¹⁹, any history of head trauma, any significant medical condition, or any condition that would interfere with MRI (e.g., inability to fit in the scanner, claustrophobia, cochlear implant, metal fragments in eyes, cardiac pacemaker, neural stimulator, and metallic body inclusions or other contraindicated metal implanted in the body). Participants with major medical disorders including diabetes and/or abnormalities on screening comprehensive metabolic panel or complete blood count were excluded. Participants were also excluded if they reported a history of substance abuse, current tobacco use, alcohol consumption greater than 8 ounces of whiskey or equivalent per week, use of psychostimulants (excluding caffeine) more than twice at any time in their life or at all in the past 6 months, or any psychotropic medication in the last 6 months other than occasional use of benzodiazepines for sleep. Any illicit drug use in the last 2 months was grounds for exclusion, even in participants who did not otherwise meet criteria for substance abuse. Urine drug screens were administered, and subjects testing positive for the presence of amphetamines, cocaine, marijuana, PCP, opiates, benzodiazepines, or barbiturates were excluded. Female participants had negative pregnancy tests both at intake and on the day of the PET scan. Discounting behavioral measures for all participants in this sample were previously reported as a subsample of multiple data sets² and the present analysis is comprised of data from participants with valid PET and fMRI data.

Approval for the [¹⁸F]fallypride study protocol was obtained from the Vanderbilt University Human Research Protection Program and the Radioactive Drug Research Committee. All participants completed written informed consent and study procedures were approved by the Institutional Review Board at Vanderbilt University in accordance

RUNNING HEAD: fMRI SUBJECTIVE VALUE AND DOPAMINE D2 RECEPTORS

with the Declaration of Helsinki's guidelines for the ethical treatment of human participants.

Delay discounting task

The delay discounting task was adapted from a previously used paradigm²⁰. On each trial, participants chose between an early reward and a late reward. The delay of the early reward was set to today, 2 weeks, or 1 month, while the delay of the late reward was set to 2 weeks, 1 month, or 6 weeks later. The early reward magnitude ranged between 1% and 50% less than the late reward (determined by a Gaussian distribution, min=\$5, max=\$30, mean=\$15, standard deviation=\$10). Participants played 84 trials (42 trials in two runs) of the task. Participants had up to 8 seconds to select a reward, after which their selection was highlighted for 2 seconds, followed by an inter-trial-interval that lasted up to 10 seconds minus the reaction time. If no response was made on the choice slide within 7950 milliseconds, the blank (ITI) slide was set to 2050 milliseconds. Thus, each trial lasted approximately 12 seconds from the choice screen onset to the end of an ITI. (See Figure 1A). To ensure participants were motivated in their choices, the task was incentive compatible. Participants were instructed to treat all decisions as real because a random trial would be selected for actual payout at the end of the experiment. Participants were paid in Amazon.com credit that was emailed to them either that afternoon (if the participant selected a reward available today) or scheduled to be delivered to them at the delayed date (if the participant selected a reward available later).

RUNNING HEAD: fMRI SUBJECTIVE VALUE AND DOPAMINE D2 RECEPTORS

Subjective value modeling

We used a computational model to estimate subjective value from behavioral preferences to create timeseries regressors for fMRI analysis. Since we assumed preferences were discounted hyperbolically^{21,22}, for each participant, discounting was modeled with a hyperbolic discounted value function $SV = A/(1+kD)$, where A represents the monetary reward magnitude, k represents the discount rate, D represents the delay in days, and SV represents the subjective value of available options. Choices were fit using a decision function with a softmax slope to describe how differences in subjective values between options influenced the probability of choosing the higher subjective value option. Since k values are not normally-distributed, we used the natural log-transformed values $\ln(k+1)$ for behavioral correlations.

PET acquisition and processing

[18F]fallypride, (S)-N-[(1-allyl-2-pyrrolidinyl)methyl]-5-(3[18F]fluoropropyl)-2,3-dimethoxybenzamide, was produced in the radiochemistry laboratory attached to the PET unit at Vanderbilt University Medical Center, following synthesis and quality control procedures described in US Food and Drug Administration IND 47,245. PET data were collected on a GE Discovery STE (DSTE) PET scanner (General Electric Healthcare, Chicago, IL, USA). The scanner had an axial resolution of 4 mm and in-plane resolution of 4.5 to 5.5 mm FWHM at the center of the field of view. Serial scan acquisition was started simultaneously with a 5.0 mCi (185 MBq) slow bolus injection of the DA D2/3 tracer [18F]fallypride (median specific activity = 5.33 mCi). CT scans were collected for

RUNNING HEAD: fMRI SUBJECTIVE VALUE AND DOPAMINE D2 RECEPTORS

attenuation correction prior to each of the three emission scans, which together lasted approximately 3.5 hours with two breaks for participant comfort.

[18F]fallypride binding potential (BP_{ND}) image calculation

Voxelwise D2/D3 binding potential images were calculated using the simplified reference tissue model, which has been shown to provide stable estimates of [18F]fallypride BP_{ND} ²³. The cerebellum served as the reference region because of its relative lack of D2/D3 receptors¹³. The cerebellar reference region was obtained from an atlas provided by the ANSIR laboratory at Wake Forest University. Limited PET spatial resolution introduces blurring and causes signal to spill onto neighboring regions. Because the cerebellum is located proximal to the substantia nigra and colliculus, which both have D2Rs, only the posterior 3/4 of the cerebellum was included in the region of interest (ROI) to avoid contamination of [18F]fallypride signal from the midbrain nuclei. The cerebellum ROI also excluded voxels within 5 mm of the overlying cerebral cortex to prevent contamination of cortical signals. The bilateral putamen ROI, drawn according to established guidelines²⁴ on the MNI brain, served as the receptor rich region in the analysis. The cerebellum and putamen ROIs were registered to each participant's T1-weighted anatomical image using FSL non-linear registration of the MNI template to the individual participant's T1. T1 images and their associated cerebellum and putamen ROIs were then co-registered to the mean image of all realigned frames in the PET scan using FSL-FLIRT (<http://www.fmrib.ox.ac.uk/fsl/>, version 6.00). Emission images from the 3 PET scans were merged temporally into a 4D file. To correct for motion during scanning and misalignment between the 3 PET scans, all PET frames

RUNNING HEAD: fMRI SUBJECTIVE VALUE AND DOPAMINE D2 RECEPTORS

were realigned using SPM8 (www.fil.ion.ucl.ac.uk/spm/) to the frame acquired 10 minutes post injection. Model fitting and BP_{ND} calculation were performed using PMOD Biomedical Imaging Quantification software (PMOD Technologies, Switzerland). Binding potential images represent the ratio of specifically bound ligand ([¹⁸F]fallypride in this study) to its free concentration.

The bilateral midbrain and ventral striatum ROIs were drawn in MNI standard space using previously described guidelines²⁴⁻²⁶ and registered to PET images using the same transformations used in BP_{ND} calculation (see Figure 1B). An additional ROI for the medial frontal cortex in MNI space was derived from the Harvard-Oxford Atlas and registered to PET images using the same transformations used in BP_{ND} calculation.

MRI data acquisition

Brain images were collected using a 3T Phillips Intera Achieva whole-body MRI scanner using a 32-channel head coil (Philips Healthcare, Best, The Netherlands). For each run of the delay discounting task, we used T2*-weighted gradient echo-planar imaging (EPI) to acquired 262 volumes of 38 ascending slices, 3.2 mm thick with .35 mm gap (in-plane resolution 3 x 3 mm), FOV = 240 mm x 240 mm, flip angle (FA) = 79, TR = 2000 ms, TE = 35 ms. A high resolution T1-weighted image (TFE SENSE protocol; 150 slices (in-plane resolution 1 x 1 mm), FOV = 256 x 256, FA = 8, TR = 8.9 ms, TE = 4.6 ms) was acquired for registration purposes and ROI definition.

RUNNING HEAD: fMRI SUBJECTIVE VALUE AND DOPAMINE D2 RECEPTORS

fMRI data preprocessing

Data preprocessing was performed using fMRIPrep version 1.0.0-rc9²⁷, a Nipype²⁸ based tool. Each T1-weighted volume was corrected for bias field using N4BiasFieldCorrection v2.1.0²⁹ and skull-stripped using antsBrainExtraction.sh v2.1.0 (using OASIS template). Cortical surface was estimated using FreeSurfer v6.0.0³⁰. The skull-stripped T1-weighted volume was co-registered to a skull-stripped ICBM 152 Nonlinear Asymmetrical template version 2009c³¹ using a nonlinear transformation implemented in ANTs v2.1.0³².

Functional data was slice time corrected using AFNI³³ and motion corrected using MCFLIRT v5.0.9³⁴. "Fieldmap-less" distortion correction was performed by co-registering the functional image to the same participant's T1w image with its intensity inverted^{35,36} and constrained with an average fieldmap template³⁷, implemented with antsRegistration (ANTs). This was followed by co-registration to the corresponding T1-weighted volume using boundary-based registration³⁸ with 9 degrees of freedom, implemented in FreeSurfer v6.0.0. Motion correcting transformations, T1-weighted transformation and MNI template warp were applied in a single step using antsApplyTransformations v2.1.0 with Lanczos interpolation.

Three tissue classes were extracted from T1w images using FSL FAST v5.0.9³⁹. Frame-wise displacement⁴⁰ was calculated for each functional run using Nipype. For more details of the pipeline see <https://fmriprep.readthedocs.io/en/latest/workflows.html>.

We performed voxelwise nuisance signal removal using publicly-available scripts (<https://github.com/arielletambini/denoiser>) to clean the data. Specifically, we denoised

RUNNING HEAD: fMRI SUBJECTIVE VALUE AND DOPAMINE D2 RECEPTORS

the data for 10 fMRIPrep-derived confounds: CSF, white matter, standardized DVARS, framewise displacement (over 0.5 mm), and six motion parameters.

FSL FEAT (www.fmrib.ox.ac.uk/fsl) was run for each participant with fixed effects across runs. Functional data were high-pass filtered with a cutoff of 100 seconds, spatially-smoothed with a 5 mm full-width-at-half-maximum (FWHM) Gaussian kernel, and grand-mean intensity normalized. FSL FILM pre-whitening was carried out for autocorrelation correction. Events were convolved with a double-gamma hemodynamic response function. A general linear model was fit to the data with a regressor for the mean (un-modulated) signal over the duration of the choice period and a regressor for the parametric modulation of subjective value at the choice reaction time with a duration of zero seconds. We applied temporal filtering and added the temporal derivative to the waveform. Visual inspection of data quality using outputs from MRIQC⁴¹ suggested one participant had fMRI scans with strong artefactual features. This participant was excluded from analysis. One participant was excluded from analyses because this person only had data for a single run of the task. One participant was excluded for corrupted fMRI data. This provided a final sample of 22 participants. Participant demographics and characteristics are listed in Table 1.

RUNNING HEAD: fMRI SUBJECTIVE VALUE AND DOPAMINE D2 RECEPTORS

Table 1. Study sample characteristics

Variable	Mean \pm SD
N	22
Sex	12 F, 10 M
Age	20.9 \pm 1.95
Race/Ethnicity	13 White
Years Education	14.7 \pm 1.43
Prop(sooner) chosen	.550 \pm .212
Ln(<i>k</i>)	-4.68 \pm 1.27
Inverse temperature	3.74 \pm 4.41
LLH	11.8 \pm 5.90
BIC	31.1 \pm 11.8
Ventral Striatum BP _{ND}	17.3 \pm 2.90
Midbrain BP _{ND}	1.50 \pm .236

Statistical analyses

Linear regressions between D2R BP_{ND} in each of the 3 PET ROIs (VS, midbrain, vmPFC) and discounting behavior (indexed with Ln(*k*+1) or proportion of smaller-sooner choices) was run in JASP (Version 0.9.2)⁴². For associations between PET ROIs and fMRI subjective value signal, we extracted the mean subjective value parameter estimates (percent signal change) for each participant from ROIs in the medial frontal cortex, posterior cingulate, midbrain, and ventral striatum (defined using the same methods described above for the PET ROIs) (see Figure 1B). Like the medial frontal cortex ROI, the posterior cingulate was derived from the Harvard-Oxford Atlas. Statistically-significant relationships were defined using a Bonferroni-correction for 12 tests (3 PET ROIs: VS, midbrain, vmPFC by 4 fMRI ROIs: VS, midbrain, vmPFC, PCC)

RUNNING HEAD: fMRI SUBJECTIVE VALUE AND DOPAMINE D2 RECEPTORS

on an alpha of .05 ($p < .004$). Effects surviving correction for multiple comparisons were followed-up with regressions controlling for age and sex as covariates of no interest. All regression coefficients reported are standardized.

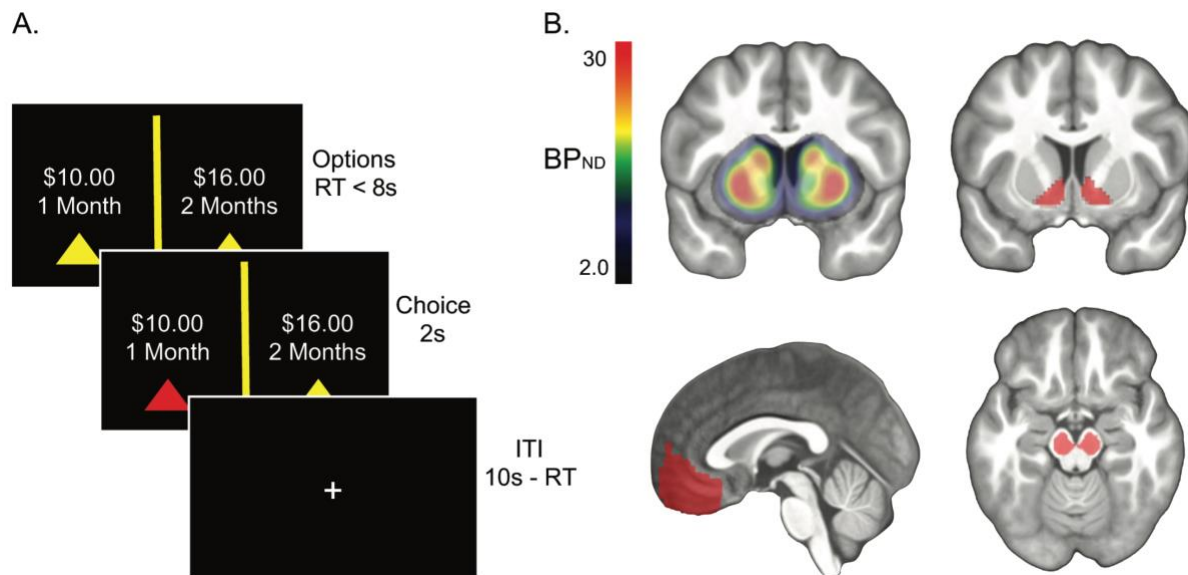
For D2R ROIs significantly associated with subjective value signal, we conducted whole-brain analyses of the fMRI data to better localize the effects or identify associations in other regions. All whole-brain fMRI analyses were carried out in FSL FEAT with mixed effects using FLAME 1. Statistical maps were thresholded using a cluster-forming threshold with a height of $Z > 2.3$, and cluster-corrected significance of $p < .05$. Analyses were run to examine: (1) the mean effect of subjective value parametric modulation of the fMRI BOLD signal across all participants and (2) the correlation between individual differences in BP_{ND} and subjective value parametric modulation of the BOLD signal.

Figure 1.

A.) Task outline. Participants were given up to 8 seconds to indicate a preference for a smaller-sooner or a larger-later monetary reward, after which their choice was highlighted for two seconds. Choice trials were separated by an inter-trial-interval (ITI) scaled by the difference between 10 seconds and the choice response time so that every trial lasted 12 seconds from choice onset to ITI. **B.) Top Row:** Mean BP_{ND} map (left) and ventral striatum ROI (right) from which the average DA D2 receptor availability was extracted for each subject. **Bottom Row:** Ventromedial prefrontal cortex (left) and midbrain (right) ROIs from which subjective value parameter estimates and DA D2

RUNNING HEAD: fMRI SUBJECTIVE VALUE AND DOPAMINE D2 RECEPTORS

receptor availability were extracted for each participant. BP_{ND} map and ROIs shown are overlaid on the mean participant T1-weighted image in MNI space.



Results

Dopamine D2Rs and delay discounting behavior

As expected, computationally-derived discount rates, $\ln(k+1)$, were strongly positively correlated with the proportion of smaller-sooner options chosen ($\beta = .911$, 95% CI [.794, .963], $p < .001$). As already reported in a previous publication², D2R BP_{ND} was not correlated with the proportion of smaller-sooner choices or $\ln(k+1)$ values for any ROI: VS (prop sooner: $\beta = .036$, 95% CI [−.391, .451], $p = .873$; $\ln(k)$: $\beta = -.021$, 95% CI [−.439, .404], $p = .927$), Figure 2D; midbrain (prop sooner: $\beta = .036$, 95% CI [−.392, .451], $p = .874$; $\ln(k)$: $\beta = -.054$, 95% CI [−.465, .376], $p = .810$), and vmPFC (prop sooner: $\beta = .218$, 95% CI [−.224, .586], $p = .330$; $\ln(k)$: $\beta = .195$, 95% CI [−.247, .570], $p = .384$). These D2R-discounting behavior results presented here are based on

RUNNING HEAD: fMRI SUBJECTIVE VALUE AND DOPAMINE D2 RECEPTORS

a subset of the data used in the prior publication that showed no significant associations between D2R and discounting behavior in healthy adults².

Localization of subjective value representations within fMRI data

Voxelwise analysis of the mean effect of subjective value of the chosen option revealed significant parametric modulation in the dorsomedial PFC. Exclusion of a single outlier revealed stronger and spatially extended activation in the vmPFC and posterior cingulate cortex (PCC) (see Table 2 and Figure 2A). These effects are consistent with previous studies using subjective value as a parametric regressor^{6,21,43}. Both unthresholded maps with and without the outlier are available to view/download on Neurovault (<https://neurovault.org/collections/PDSRXDAH/>).

Table 2. Average neural representations of subjective value of the chosen option.

Mean Effect of Subjective Value (Chosen Option)			MNI Coordinates		
Regions	Extent	Peak Z-stat	X	Y	Z
L Posterior Cingulate	122	3.65	-3	-39	29
L Precuneus		2.90	-6	-69	39
L Frontal Superior Medial Cortex	388	3.38	-6	42	21
L Frontal Medial Orbital Cortex /		3.25	-3	54	-7
Ventral Frontal Pole					
Average effects are reported across 21 subjects. Showing local maxima separated by 20 mm for cluster-forming threshold Z>2.3, cluster-corrected p<.05.					

RUNNING HEAD: fMRI SUBJECTIVE VALUE AND DOPAMINE D2 RECEPTORS

Subjective value representations and delay discounting behavior

We ran correlations between fMRI parameter estimates for subjective value in each of the 4 subjective value ROIs (VS, midbrain, vmPFC, PCC) and discounting rates to evaluate whether individual differences in subjective value representations were associated with individual differences in time discounting behavior. There were non-significant correlations between discounting and subjective value in the VS (prop sooner: $\beta = -.046$, 95% CI $[-.459, .383]$, $p = .839$; Ln(k): $\beta = -.046$, 95% CI $[-.383, .458]$, $p = .840$), midbrain (prop sooner: $\beta = -.060$, 95% CI $[-.470, .371]$, $p = .790$; Ln(k): $\beta = -.097$, 95% CI $[-.498, .339]$, $p = .669$), vmPFC (prop sooner: $\beta = -.299$, 95% CI $[-.640, .140]$, $p = .176$; Ln(k): $\beta = -.312$, 95% CI $[-.648, .126]$, $p = .158$), and PCC (prop sooner: $\beta = -.014$, 95% CI $[-.433, .410]$, $p = .952$; Ln(k): $\beta = -.009$, 95% CI $[-.429, .414]$, $p = .967$) (See Figure 2B and 2C).

Ventral Striatum D2Rs (PET) and subjective value representations (fMRI)

We identified a positive correlation between D2R BP_{ND} in the VS and subjective value-related fMRI signal in the vmPFC ($\beta = .466$, 95% CI $[.056, .742]$, $p = .029$). Combined visual inspection of the correlation and bivariate outlier statistics (Cook's distance greater than 4 times the mean distance, t-test of studentized residuals ($p < .05$), and test of heteroskedasticity ($p < .05$)) identified an influential outlier with high D2R BP_{ND} but low subjective value parameter estimates that may have biased the estimated effect. This is the same outlier mentioned above in the fMRI analyses. Exclusion of this outlier revealed a stronger association ($\beta = .624$, 95% CI $[.263, .832]$, $p = .003$) (see Figure 2E). This effect remained significant after controlling for age and sex

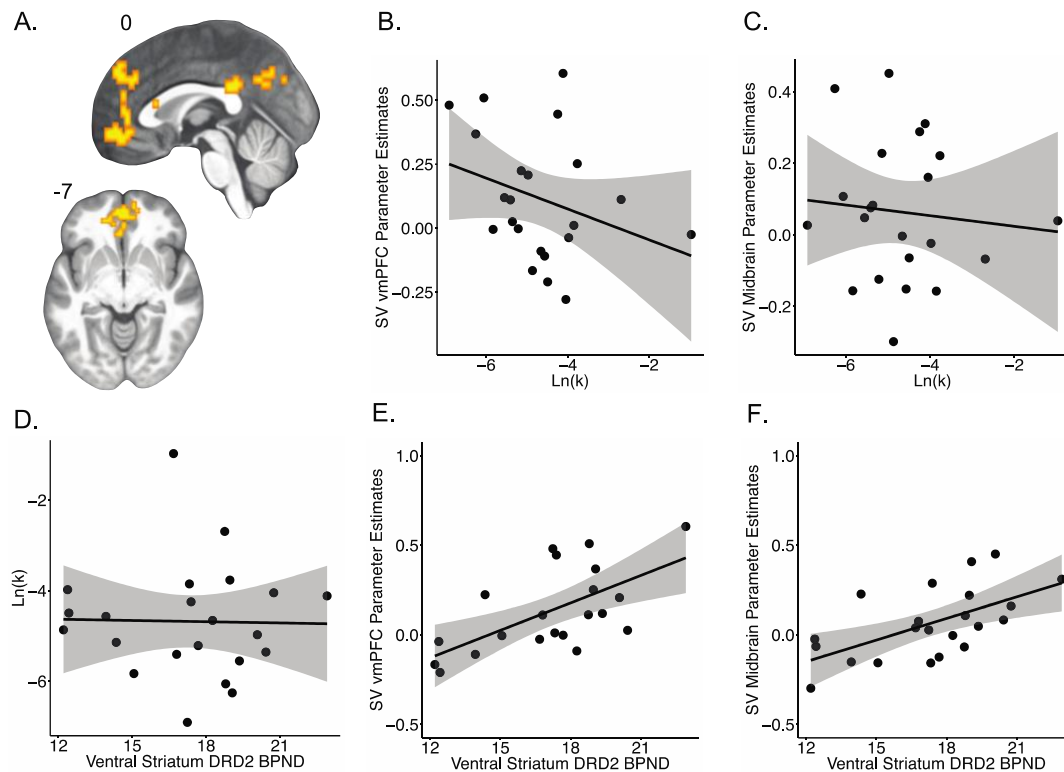
RUNNING HEAD: fMRI SUBJECTIVE VALUE AND DOPAMINE D2 RECEPTORS

as covariates of no interest ($\beta = .548$, $p = .003$). D2R BP_{ND} in the VS was also significantly positively associated with subjective value-related fMRI signal in the midbrain ($\beta = .597$, 95% CI [.234, .814], $p = .003$) (see Figure 2F). This effect remained significant after controlling for age and sex ($\beta = .576$, SE = .012, $t(18) = 3.27$, $p = .004$). D2 BP_{ND} in the VS was not significantly associated with subjective value in the VS ($\beta = .333$, 95% CI [-.103, .661], $p = .130$) or PCC ($\beta = .026$, 95% CI [-.400, .443], $p = .909$).

Figure 2

A.) Mean effect of subjective value ($N = 21$) overlaid on the mean participant T1-weighted image in standard space, whole brain cluster-forming threshold $Z > 2.3$, cluster-corrected $p < .05$. Delay discounting was not correlated with the effect of subjective value on fMRI signal in the **B.)** vmPFC ($N = 22$, $r = -.312$, $p = .158$) or **C.)** midbrain ($N = 22$, $r = -.097$, $p = .669$). DA D2-like receptor availability in the ventral striatum was not correlated with **D.)** delay discounting ($N = 22$, $r = -.053$, $p = .821$). DA D2-like receptor availability was positively correlated with the effect of subjective value on fMRI signal in the **E.)** vmPFC ($N = 21$, $r = .624$, $p = .003$) and **F.)** midbrain ($N = 22$, $r = .597$, $p = .003$). Shaded regions indicate 95% confidence interval.

RUNNING HEAD: fMRI SUBJECTIVE VALUE AND DOPAMINE D2 RECEPTORS



Exploratory voxelwise analysis of the fMRI data using ventral striatal D2R BP_{ND} revealed a significant correlation between BP_{ND} and subjective value representation in the left precentral gyrus, inferior frontal gyrus (IFG), and insula (See Figure 3, Table 3).

Figure 3

Positive correlation between ventral striatum D2 BP_{ND} and subjective value in the left inferior frontal gyrus, shown on the mean participant T1-weighted image in MNI space, whole brain cluster-forming threshold $Z > 2.3$, cluster-corrected $p < .05$ shown on the mean participant T1-weighted image in MNI space.

RUNNING HEAD: fMRI SUBJECTIVE VALUE AND DOPAMINE D2 RECEPTORS

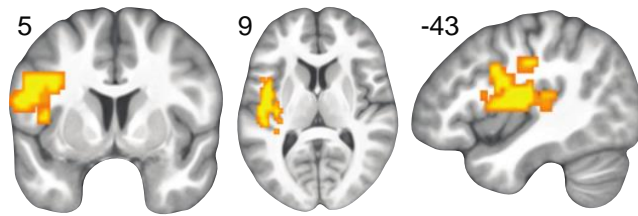


Table 3. Positive correlation between ventral striatum D2 BP_{ND} and neural representations of subjective value of the chosen option.

Positive Effect of VS D2 BP _{ND} on Subjective Value (Chosen Option)			MNI Coordinates		
Regions	Extent	Peak Z-stat	X	Y	Z
L Precentral Gyrus		3.42	-54	-3	21
L Posterior Insula	380	3.22	-33	-30	18
L Inferior Frontal Gyrus, pars opercularis		3.20	-51	6	29
Average effects are reported across all subjects. Showing local maxima separated by 20 mm for cluster-forming threshold $Z > 2.3$, cluster-corrected $p < .05$.					

Midbrain D2Rs and subjective value representations

Midbrain D2R availability and subjective value-related fMRI signal in the vmPFC were not related ($\beta = .254$, 95% CI $[-.187, .610]$, $p = .254$). As before, combined visual inspection of the correlation and bivariate outlier statistics (Cook's distance greater than 4 times the mean distance, t-test of studentized residuals ($p < .05$), and test of heteroskedasticity ($p < .05$)) identified an influential outlier (same as above) with high D2R BP_{ND} but low subjective value parameter estimates that may have biased the estimated effect. Exclusion of this outlier revealed a stronger association ($\beta = .513$, 95% CI $[.105, .773]$, $p = .017$) but the effect did not survive correction for multiple

RUNNING HEAD: fMRI SUBJECTIVE VALUE AND DOPAMINE D2 RECEPTORS

comparisons. D2 BP_{ND} in the midbrain was not significantly associated with subjective value in the midbrain ($\beta = .398$, 95% CI $[-.029, .702]$, $p = .067$), ventral striatum ($\beta = .026$, 95% CI $[-.400, .443]$, $p = .909$), or PCC ($\beta = -.172$, 95% CI $[-.554, .269]$, $p = .443$). We did not conduct exploratory voxelwise analysis of the fMRI data using midbrain BP_{ND}.

Prefrontal D2Rs and subjective value representations

vmPFC D2R availability was not significantly associated with subjective value-related fMRI signal in the VS ($\beta = -.127$, 95% CI $[-.521, .311]$, $p = .573$), midbrain ($\beta = .143$, 95% CI $[-.296, .533]$, $p = .525$), vmPFC ($\beta = -.129$, 95% CI $[-.522, .309]$, $p = .567$), or PCC ($\beta = -.041$, 95% CI $[-.454, .388]$, $p = .858$). We did not conduct exploratory voxelwise analysis of the fMRI data using vmPFC BP_{ND}.

Discussion

Here we tested the hypothesis that individual differences in mesolimbic DA D2Rs relate to neural representations of subjective value. We predicted associations between D2R in ventral striatum and midbrain and subjective value signals in ventral striatum, midbrain, and vmPFC. We identified a positive correlation between VS D2R availability and the strength of subjective value signals in the vmPFC and midbrain. However, neither D2R availability nor functional neural representation of subjective value were directly correlated with discounting behavior.

The positive correlations between mesolimbic D2Rs and subjective value in the vmPFC and midbrain are consistent with past findings converging on two key circuits: a

RUNNING HEAD: fMRI SUBJECTIVE VALUE AND DOPAMINE D2 RECEPTORS

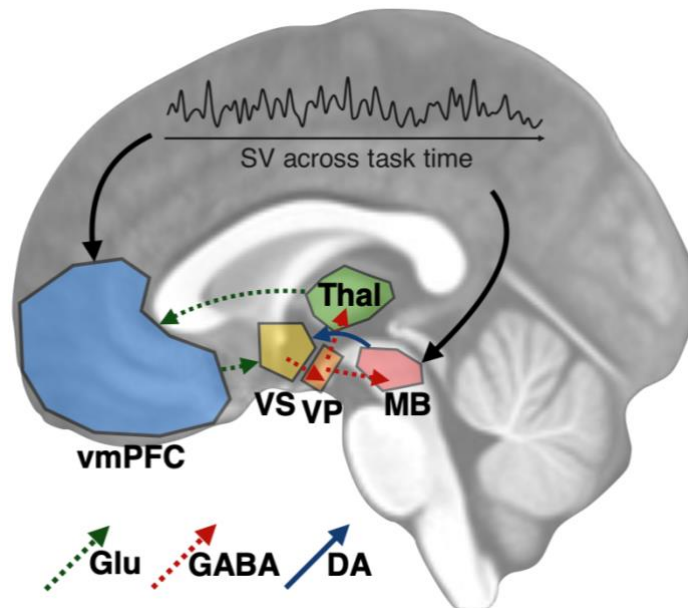
corticostriatal loop and a ventral striatopallidal loop. The corticostriatal loop is comprised of a series of pathways that promote approach behavior. Activation of D2Rs in the ventral striatum increases GABAergic signaling to the ventral pallidum which projects to the thalamus^{44,45}. Neurons in the vmPFC receive these thalamic projections and promote local release of DA in the ventral striatum⁴⁶. The ventral striatopallidal loop is comprised of connections linking the ventral striatum and dopaminergic midbrain that promote reward “wanting”⁴⁷. Specifically, D2-mediated ventral pallidal signals from the ventral striatum that complete the corticostriatal loop also promote DA release to the ventral striatum via GABAergic signals to the midbrain^{18,48} (See Figure 4 for an illustration of these two potential mechanisms). Prevention of hyperdopaminergic states in these loops are regulated by dopamine transporters in the ventral striatum and somatodendritic autoreceptors in the midbrain⁴⁹. Importantly, we did not measure DA release specifically in this study. Further studies with multiple measures of DA function are needed to test the specific links between subjective reward valuation and integration of value signals between the corticostriatal and ventral striatopallidal circuits.

Figure 4.

Illustration of a potential mechanism by which mesolimbic D2Rs impact subjective value (SV) and vice-versa. Binding of DA to D2Rs in the ventral striatum (VS) increases GABAergic signaling to the ventral pallidum (VP), which sends GABAergic projections to the thalamus (Thal) and midbrain (MB). GABAergic VP-MB signaling promotes DA release to the VS, while VP-Thal signaling promotes glutamate signaling in the

RUNNING HEAD: fMRI SUBJECTIVE VALUE AND DOPAMINE D2 RECEPTORS

ventromedial prefrontal cortex (vmPFC). The glutamatergic afferents from the vmPFC project to and promote local DA release in the VS.



The observed voxelwise associations between D2Rs and subjective value representations in other more lateral cortical regions are consistent with prior reported effects of dopaminergic drugs^{11,50,51}. While these lateral cortical regions are not often emphasized in fMRI studies of subjective value, variability in the encoding of subjective value in the IFG and precentral gyrus has been identified in studies of effort discounting^{43,52} and risky decision making⁵³. In particular, Since the IFG and precentral gyrus support inhibitory control⁵⁴ and motor control⁵⁵, respectively, individual differences in DA function may impact corticostriatal signaling. Specifically, increased subjective value representations in the vmPFC (mediated by VS D2R) may recruit additional

RUNNING HEAD: fMRI SUBJECTIVE VALUE AND DOPAMINE D2 RECEPTORS

resources that increase motivational vigor by facilitating direct control of goal-directed movements toward highly-valued rewards⁵⁶.

Although this is the first study of which we are aware examining associations between PET measures of DA function, fMRI measures of value processing, and discounting behavior, a related recent study identified associations between individual differences in D2R availability in the midbrain and neural representations of expected value (i.e., reward magnitude multiplied by probability) in the ventral striatum during a simple gambling task⁵⁷. Since expected value is an objective function and does not convey details about individual subjective utility, it is not easy to draw a straightforward comparison with the present findings. Nonetheless, subjective value signal in that study could potentially be computed after taking into account each individual's risk preferences for a more accurate direct comparison. The other unique contribution of the present study is that we used a broader set of ROIs in a larger sample to examine potential associations across the reward circuit.

A recent study⁵⁸ in humans identified an association between PET measures of DA D1 receptor availability in the ventral striatum and reinforcement learning-based value signals in the vmPFC (but not with reinforcement learning behavior *per se*), but the dual role of DA in learned value and motivation complicates interpretation of mesolimbic DA influences on prefrontal reward processing⁵⁹. Specifically, it remains unclear the extent to which updated state values emerging from prediction errors across time in a learning task are similar to goal values from one-shot decisions. Nevertheless, a positive correlation between vmPFC value representations and D1Rs in the ventral striatum in that study and D2Rs in the present study suggests a more nuanced

RUNNING HEAD: fMRI SUBJECTIVE VALUE AND DOPAMINE D2 RECEPTORS

relationship between DA function and value. Although D1Rs and D2Rs have opposite effects in the direct and indirect pathways of the basal ganglia, an emerging view suggests this dichotomy is specific to the dorsal striatum and non-existent in the ventral striatum⁶⁰. Thus, mesolimbic DA signaling in the ventral striatum could support subjective value representations effectively in the same way via D1Rs or D2Rs.

While prior studies⁵ have identified subjective value representations in the VS, we did not observe this effect in this study, consistent with a recent analysis of healthy adults using a similar task⁴³. As described in a meta-analysis of different kinds of value representations⁶¹, it has been suggested that subjective value signals in the VS might represent reward prediction errors and not goal values (which are more strongly represented in the medial prefrontal cortex). It is possible that some delay discounting tasks might have features that increased ventral striatal sensitivity to positive prediction errors—such as larger changes in the magnitudes of presented values from trial-to-trial. Since the trial-to-trial changes in presented reward magnitudes of the present study fluctuated around a normal distribution, it is possible that we minimized ventral striatal sensitivity to strong fluctuations in values. A more liberal statistical voxel threshold did reveal average subjective value representations in the ventral striatum and caudate (see unthresholded results on NeuroVault: <https://neurovault.org/collections/PDSRXDAH/>).

We explored all potential associations between all PET and fMRI ROIs including the PCC due to evidence from functional neuroimaging studies for subjective value signals in the PCC⁵. We did not find significant associations between D2R in any of our ROIs and subjective value signals in the PCC. It is possible that subjective value-related

RUNNING HEAD: fMRI SUBJECTIVE VALUE AND DOPAMINE D2 RECEPTORS

neural activity observed using fMRI during discounting tasks is not as DA-mediated as in the striatum, midbrain, or vmPFC. Although the PCC is often functionally co-activated with the striatum and vmPFC, it is often not included in models of reward circuitry¹⁴. We also did not observe associations between vmPFC D2R and subjective value signals in any of the ROIs. It is possible that effects of prefrontal DA on discounting may be more D1R-mediated as prior work suggests D1Rs and D2Rs make dissociable contributions to specific features of discounting in rodents^{62,63}.

It is striking that individual differences in DA function were correlated with neural representations of subjective value but not the behavior presumed to be influenced by regions encoding subjective value. This could suggest that DA function may impact idiosyncrasies in how choice values are computed without necessarily impacting a wide array of possible choice behaviors. The lack of a correlation between D2Rs and reward discounting is consistent across studies of healthy adults in a larger sample². Together, these individual differences may suggest that revealed preferences indexed by behavioral choices are not aligned tightly enough to valuation signals indexed by BOLD responses to capture the biological mechanisms that shape valuation. Although this runs counter to assumptions in the neuroeconomics literature, the lack of strong associations complements some theoretical models of cognition. For example, fitting David Marr's levels of analysis, DA signaling provides a neural substrate at the implementation level, subjective value provides the strategy at the algorithmic level, and preference for smaller-sooner options describe the problem at the computational level⁶⁴. As Marr and others have described, the neural processes alone at the implementation level cannot adequately describe behavior at the computational level, but only have

RUNNING HEAD: fMRI SUBJECTIVE VALUE AND DOPAMINE D2 RECEPTORS

meaning inasmuch as each of these levels are linked by the intermediate algorithmic level⁶⁵. This hierarchical structure might explain why D2R receptor *availability* (implementation level) alone does not reveal associations with discounting behavior (computational level), even though it does explain neural subjective value representation (algorithmic level). This precludes dynamic measures of dopamine signals (for example fast-scan cyclic voltammetry) which more directly encode value signals⁹.

As with most neuroreceptor PET studies, the most important limitation of the present study is the sample size, which limits statistical power. Although the sample size of this study is comparable to or larger than other recent studies measuring both fMRI signal and DA PET measures within subjects^{57,66,67}, no prior studies have used large enough samples to better estimate the effect sizes that might be expected. As such, even the strongest effects have quite wide confidence intervals, so the sizes of the true associations between these measures are unclear. Despite the relatively small sample, given the novelty of the associations observed, these results provide valuable information given the direct measurement of DA receptors and past speculation on the role of DA in the study of reward discounting. It is also important to note that since we did not measure DA release, we are limited from making stronger claims about transient changes in VS DA concentrations. Instead, baseline measures of D2R availability reflect individual differences that are more trait-like. Nonetheless, baseline measures have previously been shown to be positively correlated with DA release⁶⁸. Since all neuroimaging data (fMRI and PET) are publicly available on OpenNeuro (<https://openneuro.org/datasets/ds002041>), we hope this initial set of analyses and the

RUNNING HEAD: fMRI SUBJECTIVE VALUE AND DOPAMINE D2 RECEPTORS

complete data set provide a unique resource for other scientists to better understand associations between DA receptors and reward-related functional brain activation. Until now, it has been unclear how neural representations of subjective value arise to support a broad range of intertemporal choice behaviors in humans. The present findings suggest that variation dopamine function may account for differences between people in neural representations of subjective value.

RUNNING HEAD: fMRI SUBJECTIVE VALUE AND DOPAMINE D2 RECEPTORS

References

- 1 Peters, J. & Buchel, C. The neural mechanisms of inter-temporal decision-making: understanding variability. *Trends Cogn Sci* **15**, 227-239, doi:10.1016/j.tics.2011.03.002 (2011).
- 2 Castrellon, J. J. *et al.* Individual Differences in Dopamine Are Associated with Reward Discounting in Clinical Groups But Not in Healthy Adults. *The Journal of neuroscience : the official journal of the Society for Neuroscience* **39**, 321-332, doi:10.1523/JNEUROSCI.1984-18.2018 (2019).
- 3 Joutsa, J. *et al.* Dopaminergic function and intertemporal choice. *Transl Psychiatry* **5**, e520, doi:10.1038/tp.2015.12 (2015).
- 4 Schultz, W., Carelli, R. M. & Wightman, R. M. Phasic dopamine signals: from subjective reward value to formal economic utility. *Curr Opin Behav Sci* **5**, 147-154, doi:10.1016/j.cobeha.2015.09.006 (2015).
- 5 Bartra, O., McGuire, J. T. & Kable, J. W. The valuation system: a coordinate-based meta-analysis of BOLD fMRI experiments examining neural correlates of subjective value. *Neuroimage* **76**, 412-427, doi:10.1016/j.neuroimage.2013.02.063 (2013).
- 6 Clithero, J. A. & Rangel, A. Informatic parcellation of the network involved in the computation of subjective value. *Soc Cogn Affect Neurosci* **9**, 1289-1302, doi:10.1093/scan/nst106 (2014).
- 7 Kobayashi, S. & Schultz, W. Influence of reward delays on responses of dopamine neurons. *The Journal of neuroscience : the official journal of the Society for Neuroscience* **28**, 7837-7846, doi:10.1523/JNEUROSCI.1600-08.2008 (2008).
- 8 Saddoris, M. P. *et al.* Mesolimbic dopamine dynamically tracks, and is causally linked to, discrete aspects of value-based decision making. *Biol Psychiatry* **77**, 903-911, doi:10.1016/j.biopsych.2014.10.024 (2015).
- 9 Schelp, S. A. *et al.* A transient dopamine signal encodes subjective value and causally influences demand in an economic context. *Proc Natl Acad Sci U S A* **114**, E11303-E11312, doi:10.1073/pnas.1706969114 (2017).
- 10 Weber, S. C. *et al.* Dopamine D2/3- and mu-opioid receptor antagonists reduce cue-induced responding and reward impulsivity in humans. *Transl Psychiatry* **6**, e850, doi:10.1038/tp.2016.113 (2016).
- 11 Pine, A., Shiner, T., Seymour, B. & Dolan, R. J. Dopamine, time, and impulsivity in humans. *The Journal of neuroscience : the official journal of the Society for Neuroscience* **30**, 8888-8896, doi:10.1523/JNEUROSCI.6028-09.2010 (2010).

RUNNING HEAD: fMRI SUBJECTIVE VALUE AND DOPAMINE D2 RECEPTORS

- 12 Bjorklund, A., Divac, I. & Lindvall, O. Regional distribution of catecholamines in monkey cerebral cortex, evidence for a dopaminergic innervation of the primate prefrontal cortex. *Neurosci Lett* **7**, 115-119 (1978).
- 13 Camps, M., Cortes, R., Gueye, B., Probst, A. & Palacios, J. M. Dopamine receptors in human brain: autoradiographic distribution of D2 sites. *Neuroscience* **28**, 275-290 (1989).
- 14 Haber, S. N. & Knutson, B. The reward circuit: linking primate anatomy and human imaging. *Neuropsychopharmacology* **35**, 4-26, doi:10.1038/npp.2009.129 (2010).
- 15 Goto, Y. & Grace, A. A. Dopaminergic modulation of limbic and cortical drive of nucleus accumbens in goal-directed behavior. *Nat Neurosci* **8**, 805-812, doi:10.1038/nn1471 (2005).
- 16 Ferenczi, E. A. *et al.* Prefrontal cortical regulation of brainwide circuit dynamics and reward-related behavior. *Science* **351**, aac9698, doi:10.1126/science.aac9698 (2016).
- 17 Watabe-Uchida, M., Zhu, L., Ogawa, S. K., Vamanrao, A. & Uchida, N. Whole-brain mapping of direct inputs to midbrain dopamine neurons. *Neuron* **74**, 858-873, doi:10.1016/j.neuron.2012.03.017 (2012).
- 18 Soares-Cunha, C. *et al.* Nucleus Accumbens Microcircuit Underlying D2-MSN-Driven Increase in Motivation. *eNeuro* **5**, doi:10.1523/ENEURO.0386-18.2018 (2018).
- 19 First, M. B., Gibbon, M., Spitzer, R. L., Williams, J. B. W. & Benjamin, L. S. *Structured Clinical Interview for DSM-IV Axis II Personality Disorders, (SCID-II)*. (American Psychiatric Press, Inc., 1997).
- 20 McClure, S. M., Laibson, D. I., Loewenstein, G. & Cohen, J. D. Separate neural systems value immediate and delayed monetary rewards. *Science* **306**, 503-507, doi:10.1126/science.1100907 (2004).
- 21 Kable, J. W. & Glimcher, P. W. The neural correlates of subjective value during intertemporal choice. *Nat Neurosci* **10**, 1625-1633, doi:10.1038/nn2007 (2007).
- 22 Mazur, J. E. in *Quantitative Analysis of Behavior: The Effects of Delay and Intervening Events on Reinforcement Value* Vol. V (ed Michael L.; Mazur Commons, James E.; Nevin, John A.; Rachlin, Howard) Ch. 3, 55-73 (Lawrence Erlbaum Associates, 1987).
- 23 Siessmeier, T. *et al.* Parametric mapping of binding in human brain of D2 receptor ligands of different affinities. *Journal of nuclear medicine : official publication, Society of Nuclear Medicine* **46**, 964-972 (2005).

RUNNING HEAD: fMRI SUBJECTIVE VALUE AND DOPAMINE D2 RECEPTORS

- 24 Mawlawi, O. *et al.* Imaging human mesolimbic dopamine transmission with positron emission tomography: I. Accuracy and precision of D(2) receptor parameter measurements in ventral striatum. *Journal of cerebral blood flow and metabolism : official journal of the International Society of Cerebral Blood Flow and Metabolism* **21**, 1034-1057, doi:10.1097/00004647-200109000-00002 (2001).
- 25 Dang, L. C., Donde, A., Madison, C., O'Neil, J. P. & Jagust, W. J. Striatal dopamine influences the default mode network to affect shifting between object features. *J Cogn Neurosci* **24**, 1960-1970, doi:10.1162/jocn_a_00252 (2012).
- 26 Dang, L. C., O'Neil, J. P. & Jagust, W. J. Dopamine supports coupling of attention-related networks. *The Journal of neuroscience : the official journal of the Society for Neuroscience* **32**, 9582-9587, doi:10.1523/JNEUROSCI.0909-12.2012 (2012).
- 27 Esteban, O. M., Christopher; Blair, Ross W; Moodie, Craig; Isik, Ayse Ilkay; Aliaga, Asier Erramuzpe; Kent, James; Goncalves, Mathias; DuPre, Elizabeth; Snyder, Madeleine. FMRIPrep: a robust preprocessing pipeline for functional MRI. *bioRxiv*, doi:10.1101/306951 (2018).
- 28 Gorgolewski, K. *et al.* Nipype: a flexible, lightweight and extensible neuroimaging data processing framework in python. *Front Neuroinform* **5**, 13, doi:10.3389/fninf.2011.00013 (2011).
- 29 Tustison, N. J. *et al.* N4ITK: improved N3 bias correction. *IEEE Trans Med Imaging* **29**, 1310-1320, doi:10.1109/TMI.2010.2046908 (2010).
- 30 Dale, A. M., Fischl, B. & Sereno, M. I. Cortical surface-based analysis. I. Segmentation and surface reconstruction. *Neuroimage* **9**, 179-194, doi:10.1006/nimg.1998.0395 (1999).
- 31 Fonov, V. E., Alan; Mckinstry, Robert; Almlil, C.R.; Collins, Louis. Unbiased nonlinear average age-appropriate brain templates from birth to adulthood. *Neuroimage* **47** (2009).
- 32 Avants, B. B., Epstein, C. L., Grossman, M. & Gee, J. C. Symmetric diffeomorphic image registration with cross-correlation: evaluating automated labeling of elderly and neurodegenerative brain. *Med Image Anal* **12**, 26-41, doi:10.1016/j.media.2007.06.004 (2008).
- 33 Cox, R. W. AFNI: software for analysis and visualization of functional magnetic resonance neuroimages. *Comput Biomed Res* **29**, 162-173 (1996).
- 34 Jenkinson, M. Fast, automated, N-dimensional phase-unwrapping algorithm. *Magn Reson Med* **49**, 193-197, doi:10.1002/mrm.10354 (2003).

RUNNING HEAD: fMRI SUBJECTIVE VALUE AND DOPAMINE D2 RECEPTORS

- 35 Wang, S. *et al.* Evaluation of Field Map and Nonlinear Registration Methods for Correction of Susceptibility Artifacts in Diffusion MRI. *Front Neuroinform* **11**, 17, doi:10.3389/fninf.2017.00017 (2017).
- 36 Huntenburg, J. M. *Evaluating nonlinear coregistration of BOLD EPI and T1w images*, Freie Universität Berlin, (2014).
- 37 Treiber, J. M. *et al.* Characterization and Correction of Geometric Distortions in 814 Diffusion Weighted Images. *PLoS One* **11**, e0152472, doi:10.1371/journal.pone.0152472 (2016).
- 38 Greve, D. N. & Fischl, B. Accurate and robust brain image alignment using boundary-based registration. *Neuroimage* **48**, 63-72, doi:10.1016/j.neuroimage.2009.06.060 (2009).
- 39 Zhang, Y., Brady, M. & Smith, S. Segmentation of brain MR images through a hidden Markov random field model and the expectation-maximization algorithm. *IEEE Trans Med Imaging* **20**, 45-57, doi:10.1109/42.906424 (2001).
- 40 Power, J. D. *et al.* Methods to detect, characterize, and remove motion artifact in resting state fMRI. *Neuroimage* **84**, 320-341, doi:10.1016/j.neuroimage.2013.08.048 (2014).
- 41 Esteban, O. *et al.* MRIQC: Advancing the automatic prediction of image quality in MRI from unseen sites. *PLoS One* **12**, e0184661, doi:10.1371/journal.pone.0184661 (2017).
- 42 JASP (Version 0.8.5.1) [Computer Software] (Retrieved from <https://jasp-stats.org/>, 2018).
- 43 Seaman, K. L. *et al.* Subjective Value Representations during Effort, Probability, and Time Discounting across Adulthood. *Soc Cogn Affect Neurosci*, doi:10.1093/scan/nsy021 (2018).
- 44 Root, D. H., Melendez, R. I., Zaborszky, L. & Napier, T. C. The ventral pallidum: Subregion-specific functional anatomy and roles in motivated behaviors. *Prog Neurobiol* **130**, 29-70, doi:10.1016/j.pneurobio.2015.03.005 (2015).
- 45 Zahm, D. S., Zaborszky, L., Alheid, G. F. & Heimer, L. The ventral striatopallidothalamic projection: II. The ventral pallidothalamic link. *J Comp Neurol* **255**, 592-605, doi:10.1002/cne.902550410 (1987).
- 46 Hill, D. F., Parent, K. L., Atcherley, C. W., Cowen, S. L. & Heien, M. L. Differential release of dopamine in the nucleus accumbens evoked by low-versus high-frequency medial prefrontal cortex stimulation. *Brain Stimul* **11**, 426-434, doi:10.1016/j.brs.2017.11.010 (2018).

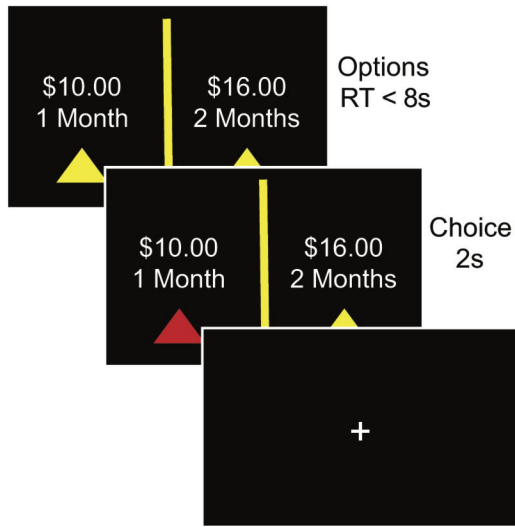
RUNNING HEAD: fMRI SUBJECTIVE VALUE AND DOPAMINE D2 RECEPTORS

- 47 Smith, K. S., Tindell, A. J., Aldridge, J. W. & Berridge, K. C. Ventral pallidum roles in reward and motivation. *Behav Brain Res* **196**, 155-167, doi:10.1016/j.bbr.2008.09.038 (2009).
- 48 Floresco, S. B., West, A. R., Ash, B., Moore, H. & Grace, A. A. Afferent modulation of dopamine neuron firing differentially regulates tonic and phasic dopamine transmission. *Nat Neurosci* **6**, 968-973, doi:10.1038/nn1103 (2003).
- 49 Ford, C. P. The role of D2-autoreceptors in regulating dopamine neuron activity and transmission. *Neuroscience* **282**, 13-22, doi:10.1016/j.neuroscience.2014.01.025 (2014).
- 50 Medic, N. *et al.* Dopamine modulates the neural representation of subjective value of food in hungry subjects. *The Journal of neuroscience : the official journal of the Society for Neuroscience* **34**, 16856-16864, doi:10.1523/JNEUROSCI.2051-14.2014 (2014).
- 51 Schmidt, A. *et al.* Inferior frontal cortex modulation with an acute dose of heroin during cognitive control. *Neuropsychopharmacology* **38**, 2231-2239, doi:10.1038/npp.2013.123 (2013).
- 52 Massar, S. A., Libedinsky, C., Weiyan, C., Huettel, S. A. & Chee, M. W. Separate and overlapping brain areas encode subjective value during delay and effort discounting. *Neuroimage* **120**, 104-113, doi:10.1016/j.neuroimage.2015.06.080 (2015).
- 53 Halfmann, K., Hedgcock, W., Kable, J. & Denburg, N. L. Individual differences in the neural signature of subjective value among older adults. *Soc Cogn Affect Neurosci* **11**, 1111-1120, doi:10.1093/scan/nsv078 (2016).
- 54 Hampshire, A., Chamberlain, S. R., Monti, M. M., Duncan, J. & Owen, A. M. The role of the right inferior frontal gyrus: inhibition and attentional control. *Neuroimage* **50**, 1313-1319, doi:10.1016/j.neuroimage.2009.12.109 (2010).
- 55 Meier, J. D., Aflalo, T. N., Kastner, S. & Graziano, M. S. Complex organization of human primary motor cortex: a high-resolution fMRI study. *J Neurophysiol* **100**, 1800-1812, doi:10.1152/jn.90531.2008 (2008).
- 56 O'Doherty, J. P. Contributions of the ventromedial prefrontal cortex to goal-directed action selection. *Ann N Y Acad Sci* **1239**, 118-129, doi:10.1111/j.1749-6632.2011.06290.x (2011).
- 57 Dang, L. C. *et al.* Individual differences in dopamine D2 receptor availability correlate with reward valuation. *Cogn Affect Behav Neurosci* **18**, 739-747, doi:10.3758/s13415-018-0601-9 (2018).

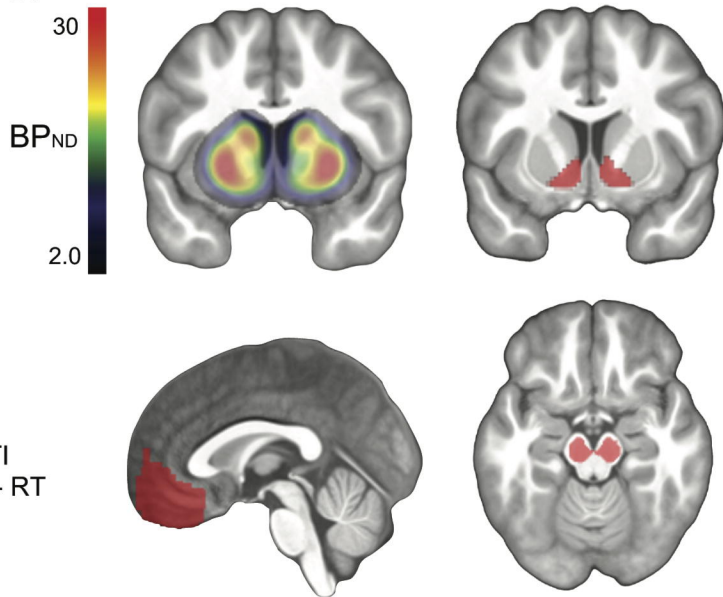
RUNNING HEAD: fMRI SUBJECTIVE VALUE AND DOPAMINE D2 RECEPTORS

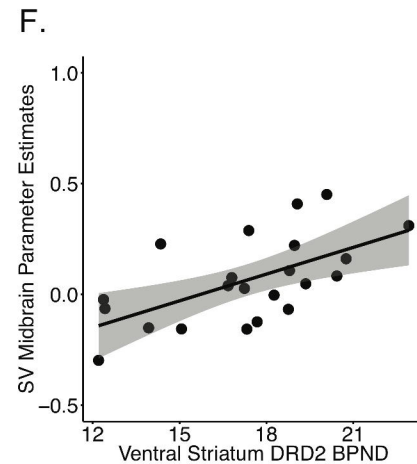
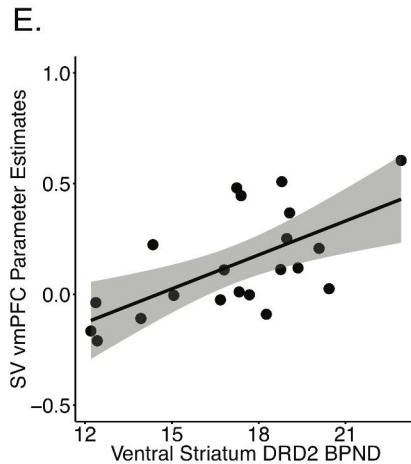
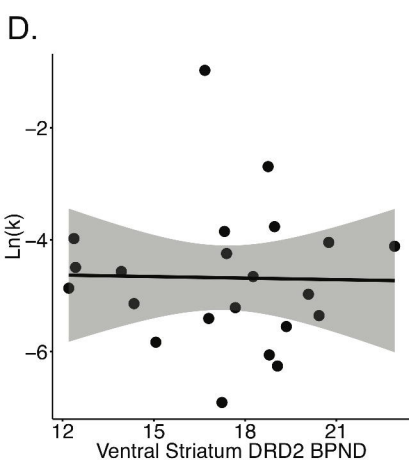
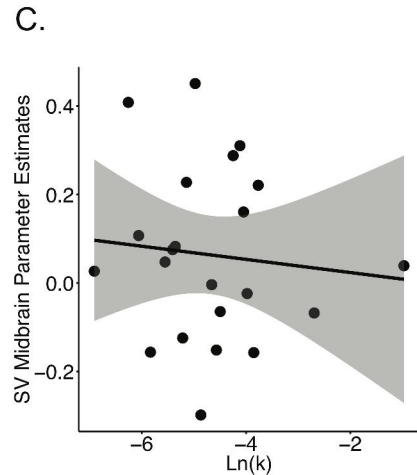
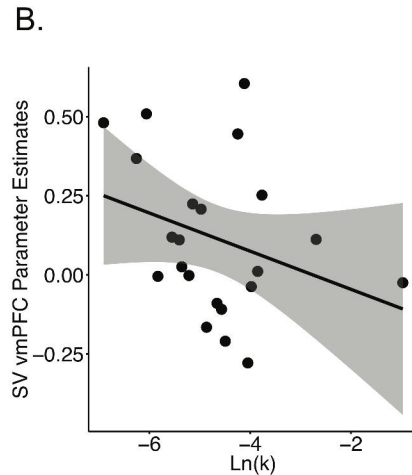
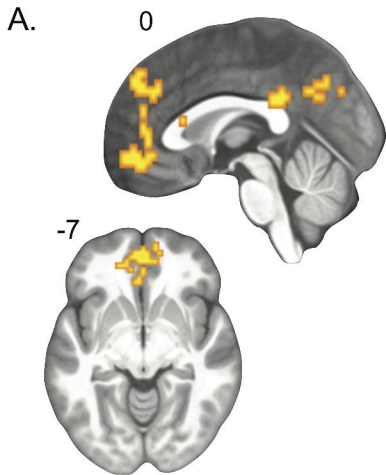
- 58 de Boer, L. *et al.* Attenuation of dopamine-modulated prefrontal value signals underlies probabilistic reward learning deficits in old age. *Elife* **6**, doi:10.7554/eLife.26424 (2017).
- 59 Berke, J. D. What does dopamine mean? *Nat Neurosci*, doi:10.1038/s41593-018-0152-y (2018).
- 60 Kupchik, Y. M. *et al.* Coding the direct/indirect pathways by D1 and D2 receptors is not valid for accumbens projections. *Nat Neurosci* **18**, 1230-1232, doi:10.1038/nn.4068 (2015).
- 61 Peters, J. & Buchel, C. Neural representations of subjective reward value. *Behav Brain Res* **213**, 135-141, doi:10.1016/j.bbr.2010.04.031 (2010).
- 62 Jenni, N. L., Larkin, J. D. & Floresco, S. B. Prefrontal Dopamine D1 and D2 Receptors Regulate Dissociable Aspects of Decision Making via Distinct Ventral Striatal and Amygdalar Circuits. *The Journal of neuroscience : the official journal of the Society for Neuroscience* **37**, 6200-6213, doi:10.1523/JNEUROSCI.0030-17.2017 (2017).
- 63 St Onge, J. R., Abhari, H. & Floresco, S. B. Dissociable contributions by prefrontal D1 and D2 receptors to risk-based decision making. *The Journal of neuroscience : the official journal of the Society for Neuroscience* **31**, 8625-8633, doi:10.1523/JNEUROSCI.1020-11.2011 (2011).
- 64 Marr, D. *Vision : a computational investigation into the human representation and processing of visual information.* (W.H. Freeman, 1982).
- 65 Krakauer, J. W., Ghazanfar, A. A., Gomez-Marin, A., MacIver, M. A. & Poeppel, D. Neuroscience Needs Behavior: Correcting a Reductionist Bias. *Neuron* **93**, 480-490, doi:10.1016/j.neuron.2016.12.041 (2017).
- 66 Ghahremani, D. G. *et al.* Striatal dopamine D(2)/D(3) receptors mediate response inhibition and related activity in frontostriatal neural circuitry in humans. *The Journal of neuroscience : the official journal of the Society for Neuroscience* **32**, 7316-7324, doi:10.1523/JNEUROSCI.4284-11.2012 (2012).
- 67 Kohno, M. *et al.* Risk-taking behavior: dopamine D2/D3 receptors, feedback, and frontolimbic activity. *Cereb Cortex* **25**, 236-245, doi:10.1093/cercor/bht218 (2015).
- 68 Samanez-Larkin, G. R. *et al.* A thalamocortico-striatal dopamine network for psychostimulant-enhanced human cognitive flexibility. *Biol Psychiatry* **74**, 99-105, doi:10.1016/j.biopsych.2012.10.032 (2013).

A.

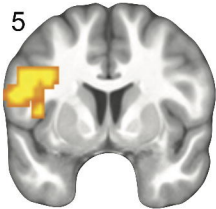


B.

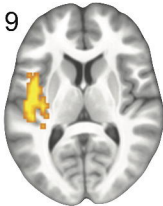




5



9



-43

