

TRIPLE REPRESENTATION OF LANGUAGE, WORKING MEMORY, SOCIAL AND EMOTION PROCESSING IN THE CEREBELLUM: CONVERGENT EVIDENCE FROM TASK AND SEED-BASED RESTING-STATE FMRI ANALYSES IN A SINGLE LARGE COHORT

Xavier Guell ^{a,b,c}, John D.E. Gabrieli ^a, Jeremy D. Schmahmann ^{c,d}

- a. Department of Brain and Cognitive Sciences and McGovern Institute for Brain Research, Massachusetts Institute of Technology, Cambridge MA 02139, USA.
- b. Cognitive Neuroscience Research Unit (URNC), Department of Psychiatric and Forensic Medicine, Universitat Autònoma de Barcelona, Barcelona, Spain
- c. Laboratory for Neuroanatomy and Cerebellar Neurobiology, Department of Neurology, Massachusetts General Hospital and Harvard Medical School, Boston MA 02114, USA.
- d. Ataxia Unit, Cognitive Behavioral Neurology Unit, Department of Neurology, Massachusetts General Hospital and Harvard Medical School, Boston MA 02114, USA.

Authors email:

Xavier Guell: xaviergp@mit.edu

John D.E. Gabrieli: gabrieli@mit.edu

Jeremy D. Schmahmann: jschmahmann@mgh.harvard.edu

Keywords: task-based fMRI, resting state fMRI, cerebellar topography, cognition, sensorimotor

Running title: Cerebellar functional topography

ABSTRACT

Delineation of functional topography is critical to the evolving understanding of the cerebellum's role in a wide range of nervous system functions. We used data from the Human Connectome Project (n=787) to analyze cerebellar fMRI task activation (motor, working memory, language, social and emotion processing) and resting-state functional connectivity calculated from cerebral cortical seeds corresponding to the peak Cohen's d of each task contrast. The combination of exceptional statistical power, activation from both motor and multiple non-motor tasks in the same participants, and convergent resting-state networks in the same participants revealed novel aspects of the functional topography of the human cerebellum. Consistent with prior studies there were two distinct representations of motor activation. Newly revealed were three distinct representations each for working memory, language, social, and emotional task processing that were largely separate for these four cognitive and affective domains. In most cases, the task-based activations and the corresponding resting-network correlations were congruent in identifying the two motor representations and the three non-motor representations that were unique to working memory, language, social cognition, and emotion. The definitive localization and characterization of distinct triple representations for cognition and emotion task processing in the cerebellum opens up new basic science questions as to why there are triple representations (what different functions are enabled by the different representations?) and new clinical questions (what are the differing consequences of lesions to the different representations?).

HIGHLIGHTS

- We analyzed motor and multiple nonmotor task fMRI activations in the cerebellum.
- Resting-state seeds were placed at each task activation peak in the cerebral cortex.
- We describe cerebellar task topography in the largest single cohort studied to date.
- Nonmotor cerebellar task activation revealed a pattern of triple representation.
- Resting-state analysis revealed an overlapping pattern of triple representation.

1. INTRODUCTION

Evidence from anatomical, neuroimaging, clinical and behavioral studies indicates that the cerebellum is engaged not only in motor control but also in cognitive and affective functions (Schmahmann, 1991, 1996, 1997; Middleton and Strick, 1994; Schmahmann and Sherman, 1998; Levisohn et al., 2000; Riva and Giorgi, 2000; Ravizza et al., 2006; Schmahmann et al., 2007; Baillieux et al., 2008; Stoodley and Schmahmann, 2009; Thompson and Steinmetz, 2009; Tedesco et al., 2011; Stoodley et al., 2012; Keren-Happuch et al., 2014; Koziol et al., 2014; Hoche et al., 2017). This paradigm shift in appreciation of the clinical neuroscience of the cerebellum has mandated a fundamental reconceptualization of cerebellar organization at the systems level (Schmahmann and Pandya 1997b; Strick et al., 2009; Schmahmann, 2010; Koziol et al., 2014; Mariën et al., 2014; Baumann et al., 2015; Adamaszek et al., 2017).

In the present study, we explored the functional topography of the cerebellum for motor and cognitive functions. This understanding is critical to the Dysmetria of Thought theory and its embedded notion of the Universal Cerebellar Transform. The Dysmetria of Thought theory (Schmahmann, 1991, 1996; 2010; Schmahmann and Sherman, 1998) holds that the cerebellum modulates behavior, maintaining it around a homeostatic baseline appropriate to context. In the same way that cerebellum regulates the rate, force, rhythm and accuracy of movements, so does it regulate the speed, capacity, consistency and appropriateness of mental or cognitive processes. Dysmetria of movement is matched by dysmetria of thought, an unpredictability and illogic to social and societal interaction. The overshoot and inability in the motor system to check parameters of movement are equated, in the cognitive realm, with a mismatch between reality and perceived reality, and erratic attempts to correct the errors of thought or behavior. The theory of the Universal Cerebellar Transform (UCT; Schmahmann, 2000, 2001, 2004) claims that there is a computation unique to the cerebellum because of the essential uniformity of the cerebellar cortical cytoarchitecture (Voogd and Glickstein, 1998; Ito, 1993), and this UCT is

applied to all streams of information to which cerebellum has access ([Schmahmann, 2000, 2001, 2004](#); [Guell et al., 2017](#)). A corollary of the UCT is the notion of universal cerebellar impairment (UCI), i.e., following cerebellar injury, dysfunction manifests as dysmetria: Dysmetria of movement is the cerebellar motor syndrome; dysmetria of thought and emotion is the cerebellar cognitive affective syndrome ([Schmahmann and Sherman, 1998](#); [Levisohn et al., 2000](#)), the third cornerstone of clinical ataxiology ([Manto and Mariën, 2015](#)). The Dysmetria of Thought theory is predicated on the existence of two contrasting but complementary anatomic realities: cytoarchitectonic uniformity (the basis of the UCT theory), and highly arranged connectional topography linking distinct cerebellar regions with distinct sensorimotor, association and paralimbic areas of the cerebral hemispheres ([Schmahmann and Pandya, 1997a, b](#); [Dum and Strick, 2003](#); [Schmahmann and Pandya, 2008](#)).

The existence and understanding of cerebellar functional topography is thus critical to these contrasting, complementary realities – heterogeneous cerebellar and extracerebellar connectivity, and homogeneous cerebellar cortical cytoarchitecture. Deeper understanding of the presence and arrangement of motor and nonmotor cerebellar functional subregions, the goal of this study, is critical to the evolving understanding of the role of the cerebellum and cerebro-cerebellar interactions in health and disease.

Two motor representations have been recognized in the cerebellum since the work of Snider and colleagues ([Snider and Eldred, 1952](#); see also [Dow, 1939](#); [Combs, 1954](#)), one representation in the anterior lobe (lobules IV and V, extending into the rostral aspect of posterior lobe lobule VI) and the other in lobule VIII (**Fig. 1A**). [Woolsey, 1952](#) regarded these as primary and secondary motor representations, along the lines of the dual representation of motor systems in the cerebral hemispheres. This finding has been replicated multiple times: through viral tract tracer studies in monkey in which M1 cerebral cortex injections label cerebellar lobules IV/V/VI and also lobules VIIIB/VIII ([Kelly and Strick, 2003, Fig. 1B](#)), in

structure-function correlation studies in patients with stroke ([Schmahmann et al., 2009](#); [Stoodley et al., 2016](#)), in PET and task based MRI studies in healthy subjects ([Rijntjes et al., 1999](#); [Bushara et al., 2001](#); [Grodd et al., 2001](#); [Takanashi et al., 2003](#); [Thickbroom et al., 2003](#); [Stoodley and Schmahmann, 2009](#); [Buckner et al., 2011](#); [Stoodley et al., 2012](#); [Keren-Happuch et al., 2014](#)), and with resting state functional connectivity MRI ([Habas et al., 2009](#); [Krienen and Buckner, 2009](#); [O'Reilly et al., 2010](#); [Buckner et al., 2011](#)). Review of earlier physiological studies in cat ([Oscarsson, 1965](#); see [Schmahmann, 2007](#)) demonstrating spinal cord input only to these anterior lobe and lobule VIII regions are consistent with these areas being regarded as the motor cerebellum ([Schmahmann, 2004, 2010](#); [Schmahmann et al., 2009](#); [Stoodley et al., 2016](#)).

Knowledge that the cerebellum is engaged in cognition and emotion, and that the anatomical locations of nonmotor cerebellar circuits are different than those for motor circuits emerged first from anatomical tract tracing investigations ([Schmahmann and Pandya, 1989, 1991, 1993, 1995, 1997a, b, 2008](#); [Schmahmann, 1996](#); [Middleton and Strick, 1998](#); [Kelly and Strick, 2003](#); [Strick et al., 2009](#)) supported by clinical observations ([Schmahmann and Sherman, 1998](#); [Levisohn et al., 2000](#); [Schoch et al., 2006](#); [Schmahmann et al., 2009](#); [Tedesco et al., 2011](#)). Task-based fMRI studies demonstrated that a wide range of cognitive functions activate cerebellum, and a meta-analysis of these studies ([Stoodley and Schmahmann, 2009](#)) showed that the cerebellar activations are topographically arranged, an observation supported by a single case of within-individual topography ([Stoodley et al., 2010](#)), a prospective study of nine healthy participants ([Stoodley et al., 2012](#)), and a second meta-analysis ([Keren-Happuch et al., 2014](#)).

Resting-state functional connectivity studies provided additional support for the highly arranged localization within cerebellum of intrinsic connectivity networks subserving different cognitive domains. These studies observed the primary motor representation in the anterior lobe and

adjacent lobule VI and the secondary representation in lobule VIII. They also revealed that most of the human cerebellum is not related to cerebral areas involved with sensorimotor processing, but rather is functionally coupled with cerebral association and paralimbic areas. Further, they suggested that there is a triple representation of resting-state cognitive networks in the cerebellum. These three representations localize approximately to (i) lobules VI/Crus I, (ii) lobules Crus II/VIIIB/VIII and (iii) lobules IX/X ([Buckner et al., 2011](#); see also [Habas et al., 2009](#); [Krienen and Buckner, 2009](#); [O'Reilly et al., 2010](#)) (**Fig. 1C**). Viral tracer studies ([Kelly and Strick, 2003](#)) show that area 46 is linked with two of these three areas - lobules Crus II and lobule IX (**Fig. 1B**). A strength of resting-state analyses is that they reflect task-independent correlations among brain regions, but a limitation of such analyses is that they cannot associate specific networks or representations with particular cognitive or emotional functions. Characterizing brain-behavior relations in functional neuroimaging requires tasks that operationalize particular mental operations.

In the present study, we set out to discover the non-motor representational topography of the cerebellum. We aimed for a relatively comprehensive characterization of non-motor domains, examining task-based activations in working memory, language, social cognition, and emotion in the largest single cohort of participants studied to date. We accomplished this by taking advantage of the newly available and unparalleled power in the dataset of the Human Connectome Project with data from 787 participants in the present analysis (HCP; [Van Essen et al., 2013](#)). Further, this is the first study to combine the analysis of cerebellar task activation and resting-state functional connectivity in the same group of participants. The advantages of this approach are that (i) resting-state functional connectivity reveals the brain's intrinsic organization independent of task conditions, (ii) task-activation analyses facilitate the interpretation of the functional significance of topographical patterns and (iii) the combination of the two provides convergent validation of functional topographic maps.

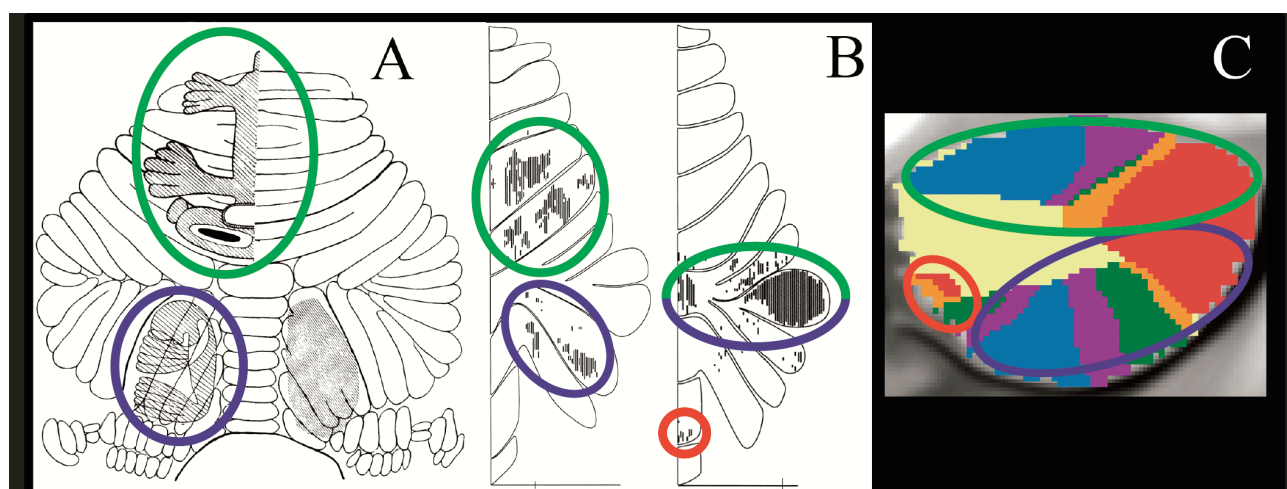


Fig.1. Convergence of findings from multiple studies of cerebellar topography suggesting an overarching organizing principle based on two motor and three nonmotor representations. Green circles indicate first motor (lobules IV/V/VI) and nonmotor (VI/Crus I) representation; blue circles indicate second motor (lobule VIII) and nonmotor (Crus II/VIIIB) representation; red circles indicate third nonmotor representation (lobules IX/X). Note that areas of first and second nonmotor representation are contiguous. **A:** Classical electrical stimulation studies showed double representation of sensorimotor activation in the cerebellum (first = lobules IV/V/VI and second = lobule VIII) (Snider and Eldred, 1952; permission pending). **B:** Tract tracing studies demonstrated labeling of the cerebellum in two different locations after injecting viral tracers in motor and nonmotor cerebral cortical areas (viral tracer in M1 labeled cerebellar lobules IV/V/VI and VIIIB/VIII, left image; viral tracer in prefrontal cortex area 46 labeled cerebellar lobules Crus I / Crus II and IX, right image) (Kelly and Strick, 2003; permission pending). **C:** Resting-state functional connectivity studies suggest that each resting-state network is represented three times in the cerebellum (approximately lobules IV/V/VI/Crus I, lobules Crus II/VIIIB/VIII and lobules IX/X) with the possible exception of the somatomotor network (represented only twice) (image from Buckner et al., 2011, where each color represents one of the seven resting-state networks defined in Yeo et al., 2011).

2. MATERIALS AND METHODS

2.1 Human Connectome Project data

fMRI data were provided by the Human Connectome Project (HCP), WU-Minn Consortium (Van Essen et al., 2013). EPI data acquired by the WU-Minn HCP used multi-band pulse sequences (Moeller et al., 2010; Feinberg et al., 2010; Setsompop et al., 2012; Xu et al., 2012). HCP structural scans are defaced using the algorithm by Milchenko and Marcus, 2013. HCP MRI data pre-processing pipelines are primarily built using tools from FSL and FreeSurfer (Glasser et al., 2013; Jenkinson et al., 2012; Fischl, 2012; Jenkinson et al., 2002). HCP structural pre-processing includes cortical myelin maps generated by the methods introduced in Glasser and Van Essen, 2011. HCP task-fMRI analyses uses FMRIB's Expert Analysis Tool (Jenkinson et al., 2012; Woolrich et al., 2001). All fMRI data used in the present study included 2mm spatial smoothing and areal-feature aligned data alignment ("MSMAIL", Robinson et al., 2014).

2.2 Participants

We analyzed data from 787 participants who completed all tasks and resting-state sessions, including 82 couples of monozygotic twins (as determined by genetic testing in the data provided by HCP). 431 were female and 356 were male. Age ranges were distributed as follows: 22-25 (n=172), 26-30 (n=337), 31-35 (n=272), >35 (n=6). HCP exclusion criteria included diabetes or high-blood pressure (for neuroimaging data quality purposes), neurodevelopmental, neuropsychiatric or neurologic disorders, and genetic disorders.

Of note, 42 additional subjects are included in the functional connectivity group analysis provided by HCP who were not included in our task activation analysis of 787 participants.

2.3 Tasks and resting-state sessions

HCP provided data from seven tasks (“motor”, “working memory”, “gambling”, “language”, “social”, “emotion” and “relational”), including level 2 cope files for 86 task contrasts (described in [Barch et al., 2013](#) and in [Glasser et al., 2016](#) supplemental materials). We analyzed the following task contrasts: *Movement* (tap left fingers, or tap right fingers, or squeeze right toes, or squeeze left toes, or move tongue) minus *Average* (average of the other four movements), assessing motor function (adapted from [Buckner et al., 2011](#)); *Two back* (subject responds if current stimulus matches the item two back) minus *Zero back* (subject responds if current stimulus matches target cue presented at start of block), assessing working memory; *Punish* (money loss blocks) minus *Reward* (money win blocks) and *Reward* minus *Punish*, assessing incentive processing (adapted from [Delgado et al., 2000](#)); *Story* (listen to stories) minus *Math* (answer arithmetic questions), assessing language processing (adapted from [Binder et al., 2011](#)); *TOM* (view socially interacting geometric objects) minus *Random* (view randomly moving geometric objects), assessing social cognition (adapted from [Castelli et al., 2000](#) and [Wheatley et al., 2007](#)); *Relational* (compare featural dimensions distinguishing two pairs of objects) minus *Match* (match objects based on verbal category), assessing relational processing (adapted from

[Smith et al., 2007](#)); *Faces* (decide which of two angry/fearful faces on the bottom of the screen match the face at the top of the screen) minus *Shapes* (same task performed with shapes instead of faces), assessing emotion processing (adapted from [Hariri et al., 2002](#)). Resting-state fMRI data consisted of four 15-minutes scans per subject.

2.4 Analysis of HCP data

We analyzed and visualized data using the Connectome Workbench visualization software and Workbench Command ([Marcus et al., 2011](#)). We transformed individual level 2 cope files provided by HCP into Cohen's d group maps by using -cifti-merge followed by -cifti-reduce mean, -cifti-reduce stdev and -cifti-math (cope mean/cope SD). In contrast to level 3 z maps provided by HCP, Cohen's d maps make it possible to observe the effect size of each task contrast rather than the significance of the BOLD signal change. A sample of 787 subjects ensures that a d value higher than 0.5 (medium effect size, [Cohen, 1988](#)) will be statistically significant even after correction for multiple comparisons (given that $d=z/\sqrt{n}$, $d>0.5$ is equivalent to $z>14.03$ for $n=787$; analysis of 17,853 cerebellar voxels would require $p<0.000028$ after Bonferroni correction, and $p<0.000028$ is equivalent to $z>4.026$). Accordingly, the analysis did not include any cluster-extent based thresholding as a method of correction for multiple comparisons. This notwithstanding, a cluster size threshold of 100mm³ was used in Table 1 and Fig. 2 - this was done in order to omit very small clusters that would make a comprehensive description of the results too extensive (listing all clusters in Table 1, and labeling all clusters in Fig. 2). Very small clusters were considered to be non-informative for the purpose of a comprehensive characterization of cerebellar functional topography in Table 1 and Fig. 2. In contrast, this cluster size threshold was removed when investigating the possibility of a triple representation of nonmotor function (Fig. 4) – in this portion of the manuscript, inclusion of very small clusters proved to be informative (in particular, in the case of third representation of social processing task activation; see Section 3.3). Of note, because cluster size thresholding was not done for the purposes of statistical significance calculations, removing cluster size threshold in

Fig. 4 does not constitute a violation of the methods adopted in our analysis, but rather a full visualization of our results.

We identified cerebellar clusters equal to or larger than 100 mm³ with a *d* value equal to or higher than 0.5 (medium effect size, [Cohen, 1988](#)) using -cifti-find-clusters. We calculated the volume of each cluster using -cifti-label-import, -cifti-all-labels-to-rois and -cifti-weighted-stats. Given that HCP uses FNIRT registration to the MNI template, we determined the location of each cerebellar cluster by using Diedrichsen's FNIRT MNI maximum probability map ([Diedrichsen et al., 2009](#)), following the current nomenclature consensus ([Schmahmann et al., 2000](#)). While the SUI probabilistic atlas has shown better overlap between subjects, only 1.75% of the voxels in the cerebellar volume are assigned to a different compartment in FNIRT when compared to SUI ([Diedrichsen et al., 2009](#)). Additionally, we determined the maximum probability reached by each cluster at each lobule by using the FNIRT MNI probability map ([Diedrichsen et al., 2009](#)). These maps were downloaded from www.diedrichsenlab.org. Of note, the terms Vermis Crus I and Vermis Crus II are equivalent to the terms lobule VIIAf and lobule VIIAt, respectively ([Schmahmann et al., 2000](#)). For ease of reference, figures illustrating anatomical labels and discussion regarding the double/triple representation hypothesis in this article do not distinguish vermal from hemispheric components. In these cases, the terms lobule VI, Crus I, Crus II, lobule VIIB, lobule VIIIA, lobule VIIIB, lobule IX and lobule X refer both to the hemispheric and vermal components of such structures.

We determined the peak *z* value of each cluster from the level 3 *z* statistic maps provided by the HCP, as well as the MNI coordinates of the peak *z* value of each cluster and the corresponding *d* value as calculated in our analysis. We compared the clusters found after our analysis with the three principal previous reports of motor and nonmotor cerebellar topography ([Stoodley and Schmahmann, 2009](#); [Stoodley et al., 2012](#); [Keren-Happuch et al., 2014](#)) and noted whether each cluster location had been previously described in any of these publications.

We visualized resting-state functional connectivity using the group analysis provided by HCP (n=820), and used cerebral cortical seeds corresponding to the peak Cohen's d of every task contrast. This approach differs from a previous study of cerebellar resting-state networks (Buckner et al., 2011) which applied a winner-takes-all algorithm to determine the strongest functional correlation of each cerebellar voxel to one of the 7 cerebral cortical resting-state networks defined in Yeo et al., 2011. We generated cerebellar maps with a Fisher's z threshold of 0.309 (given that Fisher's $z = (1/2)[\log_e(1+r) - \log_e(1-r)]$, Fisher's $z=0.309$ is equivalent to $r=0.3$, and $r=0.3$ is equivalent to medium effect size [Cohen, 1988]). We overlaid the functional connectivity maps (thresholded at medium effect size, i.e. Fisher's $z>0.309$) with task activation maps (thresholded at medium effect size, i.e. Cohen's $d>0.5$) to observe whether patterns of task-based functional topography corresponded with patterns of resting-state functional connectivity. Thresholded task activation d maps and thresholded resting-state functional connectivity z maps were also visualized on a cerebellar flat map using the SUI toolbox for SPM (Diedrichsen, 2006; Diedrichsen et al., 2009; Diedrichsen and Zotow, 2015).

3. RESULTS

3.1 Clusters of activation of each task contrast

All task contrasts showed cerebellar activation after using a threshold of $d > 0.5$, except for *Relational* minus *Match*, *Punish* minus *Reward* and *Reward* minus *Punish*. Detailed descriptions and illustrations of clusters of activation are included in **Table 1** and **Fig. 2**. **Supplementary Fig. 1 and 2** provide complete coverage of the cerebellum in coronal and sagittal sections.

As in previous studies, we observed motor task activation in lobules IV/V/VI and VIII. In nonmotor tasks, our results replicate previous findings of cognitive task activation in lobule VI and lobule VII (including Crus I, Crus II and lobule VIIB). Analysis also revealed clusters of nonmotor activation in lobules IX and X, an observation which has been previously reported but not always replicated (see Discussion section 4.2.8). Previous studies have revealed encroachment of some nonmotor activations into lobules IV, V and VIII (Stoodley and Schmahmann, 2009; Stoodley et al., 2012; Keren-Happuch et al., 2014). These findings are not reproduced in the large Human Connectome Project cohort data set, providing further support for the selective engagement of these cerebellar lobules in motor rather than nonmotor tasks. Maps of activation thresholded at $d > 0.5$ showed no overlap between motor and non-motor tasks. Further, no overlap was observed within non-motor tasks except between language and social processing.

Table 1. Detailed description of clusters of activation. Key: MNI coordinates = x, y, z coordinates of cluster z peak. Presence of a number written under lobule locations indicates cluster location according to Diedrichsen et al's FNIRT MNI maximum probability map (Diedrichsen et al., 2009), and value of the number indicates maximum % probability reached at that lobule in the FNIRT MNI probability map. P = z peak location followed by % probability of peak location are also according to the FNIRT MNI maximum probability map (Diedrichsen et al., 2009). Cluster location is written in **bold** if previously described in Stoodley et al., 2012 (group study, n=9), in *italics* if previously described in Stoodley and Schmahmann, 2009 (meta-analysis), underlined if previously described in Keren-Happuch et al., 2014 (meta-analysis), or in regular style if not previously described in any of those three studies.

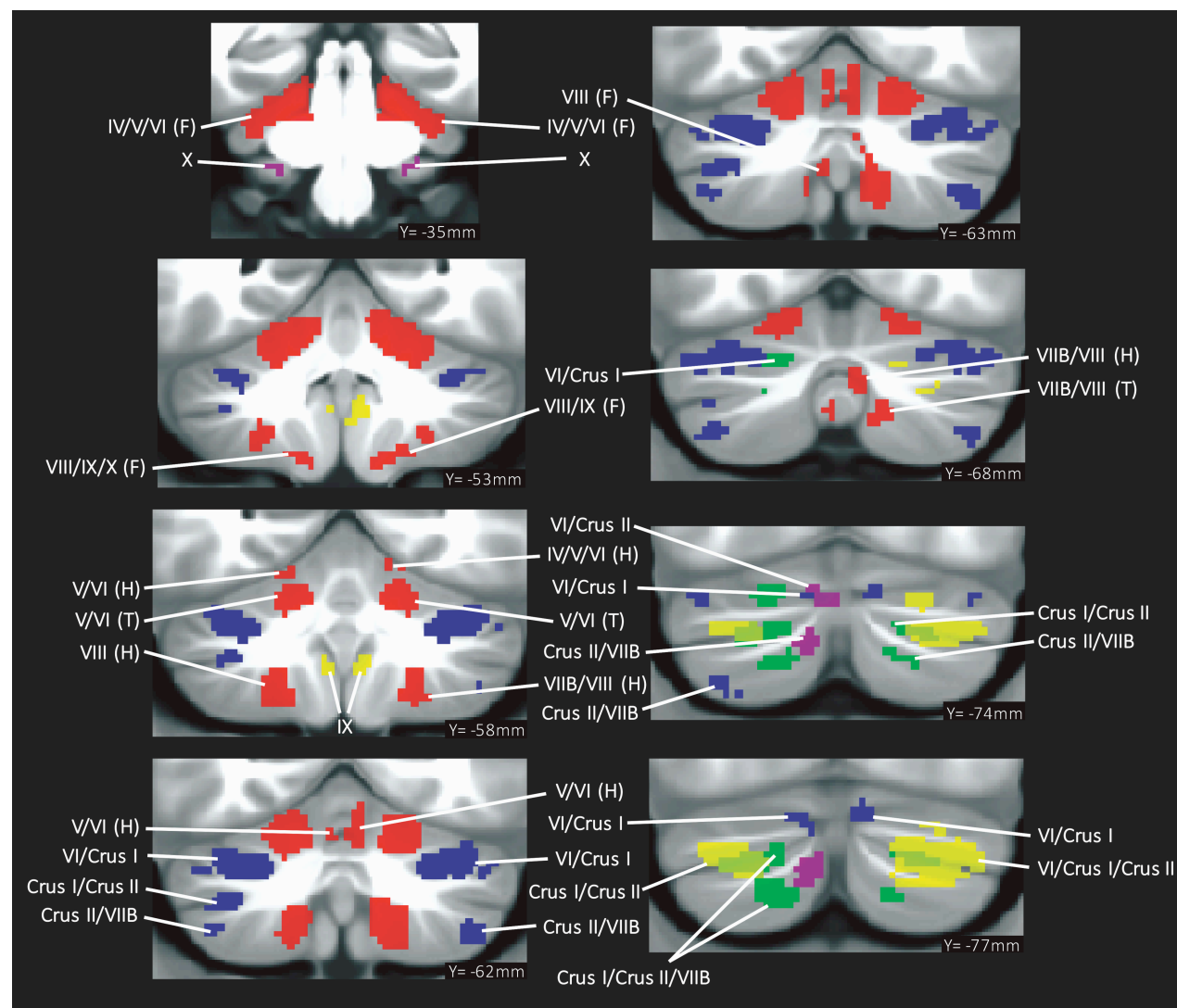


Fig. 2. Summary of cerebellar activation for motor (red), working memory (blue), language (yellow), social processing (green) and emotion processing (magenta); coronal plane. (H) = hand, (F) = foot, (T) = tongue. Activation maps are thresholded at a voxel-level threshold of $d > 0.5$. Only clusters $> 100 \text{ mm}^3$ are shown. Left is shown on the left.

3.2 Location of cerebral cortical seeds for resting-state functional connectivity

Cerebral cortical seeds for resting-state functional connectivity were placed at the peak Cohen's d of each task contrast, resulting in the following locations (see **Fig. 3**): primary motor cortex (all motor tasks), left angular gyrus (language), right pars triangularis (emotion processing), right superior temporal gyrus (social processing) and right superior parietal cortex (working memory). Note that cerebral cortical regions other than the seeds selected were also engaged in these task contrasts (e.g. left dorsolateral prefrontal cortex was the region with the second highest working memory d value after right superior parietal cortex).

Primary visual cortical areas and left angular gyrus in social processing and primary visual, visual association and inferior temporal gyrus areas in emotion processing had a higher task contrast Cohen's d values, but seeds from these regions did not show overlap with areas of task activation. These regions are shown in black (emotion) and white (social) in **Fig. 3**. In these cases, emotion and social processing seeds were placed at the next location with the highest Cohen's d value (right pars triangularis and right superior temporal gyrus, respectively), as indicated in **Fig. 3**.

This is a data-driven approach that did not rely on previous studies of brain function. This notwithstanding, seed locations are consistent with previous reports in the literature of brain function: working memory (e.g. [Koenigs et al., 2009](#)), language (e.g. [Seghier, 2013](#)), emotion processing (e.g. [Dapretto et al., 2006](#)), social processing (e.g. [Bigler et al., 2007](#)). Social and emotion processing areas that had a higher task contrast Cohen's d value but that failed to show overlap with areas of task activation (**Fig. 3**, areas shown in black and white) might correspond to regions involved in primary processing of visual stimuli (primary visual cortex) and face qualities other than emotion (visual association cortex, inferior temporal gyrus; [Kravitz et al., 2013](#)).

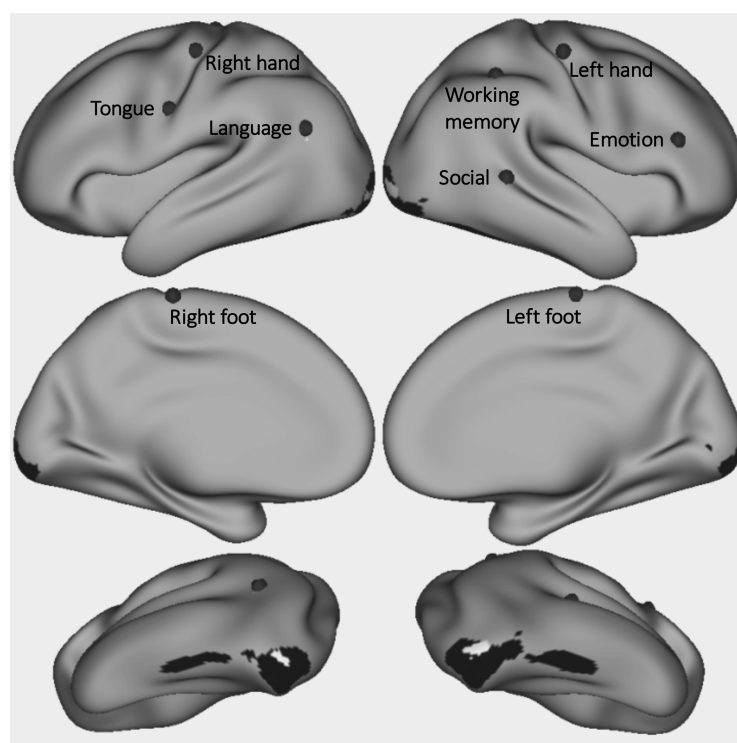


Fig. 3. Grey dots mark the seed from which resting-state functional connectivity was calculated for each task contrast. Working memory seed Cohen's $d=1.37$. Language $d=1.34$. Emotion $d=1.33$. Right hand $d=2.75$. Left hand $d=2.87$. Right foot $d=2.54$. Left foot $d=2.62$. Tongue $d=3.08$. Regions shown in black (emotion) and white (social) had a higher task contrast Cohen's d value than the selected seed location, but resting-state functional connectivity calculated from those seeds did not show overlap with areas of task activation in the cerebellum.

3.3 Double/triple representation hypothesis

We considered the following three hypothetical areas of nonmotor representation as suggested by convergent evidence in the literature (**Fig. 1**): first = lobules VI/Crus I; second = Crus II/VIIIB; third = IX/X; in addition to the well-described two areas of motor representation: first = lobules IV/V/VI; second = VIII. When viewing our results within this framework, all motor task contrasts revealed double representation in the cerebellum (**Fig. 4**). Resting-state functional connectivity calculated from cerebral cortical seeds corresponding with Cohen's d maximum value of each task contrast showed overlap with clusters of task activation, also revealing a pattern of double representation (**Fig. 4**, seeds shown in **Fig. 3**; **Supplementary Fig. 3 - 7** provide full coverage of the cerebellum in sagittal sections and display task activation and resting-state functional connectivity of each motor task contrast, showing overlapping resting-state functional connectivity in all task activation clusters). We did not observe motor task activation in lobules IX or X (third representation) even after removing the cluster size threshold, with the possible exception of foot movement activation extending to lobules IX/X (however, maximum location certainty in lobules IX/X was low [60%], see **Fig. 1**).

All nonmotor task contrasts revealed a pattern of triple representation in the cerebellum (first = lobules VI/Crus I; second = lobules Crus II/VIIb; and third = lobules IX/X) (**Fig. 4**), with the exception of working memory which did not show a third representation (lobule IX/X). Resting-state functional connectivity calculated from cerebral cortical seeds corresponding with Cohen's d maximum value of each task contrast showed overlap with clusters of task activation, also revealing a pattern of triple representation (**Fig. 4**, seeds shown in **Fig. 3**; **Supplementary Fig. 8 - 11** provide full coverage of the cerebellum in sagittal sections and display task activation and resting-state functional connectivity of each nonmotor task contrast, showing overlapping resting-state functional connectivity in all task activation clusters). The only exception was social processing, which did not reveal a resting-state connectivity cluster overlapping with task activation in the area of third nonmotor representation (lobule IX/X). Clusters extending from Crus I to Crus II were interpreted as contiguous first and second representations, following a previous description of contiguous distribution of primary and secondary representations of the default mode network in Crus I and Crus II ([Buckner et al., 2011](#)) (see **Fig. 4**, "language" lower row). Accordingly, first and second nonmotor representations were sometimes separate (e.g. see working memory map in **Fig. 4**) and sometimes contiguous (e.g. see language processing map in **Fig. 4**).

In this way, all nonmotor domains revealed triple representation of task activation and seed-based resting-state functional connectivity, with two partial exceptions: (i) social processing revealed triple representation in task activation but not in resting-state connectivity (which did not show an overlapping cluster in the area of third representation [lobule IX/X]); (ii) conversely, working memory revealed triple representation in resting-state functional connectivity but not in task activation (which did not show third representation [lobule IX/X]). This notwithstanding, working memory activation in lobule IX has been previously reported in the literature ([Desmond et al., 1997](#)). Further, lowering the thresholding revealed engagement of lobules IX/X in both

working memory task activation and social processing resting-state connectivity (see **Supplementary Fig. 12**).

Of note, cluster size threshold ($>100\text{mm}^3$) had to be removed in order to observe social task activation in lobules IX/X (**Fig. 4**, “social” lower row). This observation agrees with a previous meta-analysis which revealed social processing task activation in lobule IX ([Van Overwalle et al., 2014](#)). Note that cluster size threshold removal for social task processing does not violate our statistical approach (see section 2.4).

Notably, while relational and incentive processing did not survive our effect size threshold impositions, these two additional domains also revealed a pattern of triple representation in both task processing and resting-state connectivity when using lower thresholds (see **Supplementary Fig. 13**).

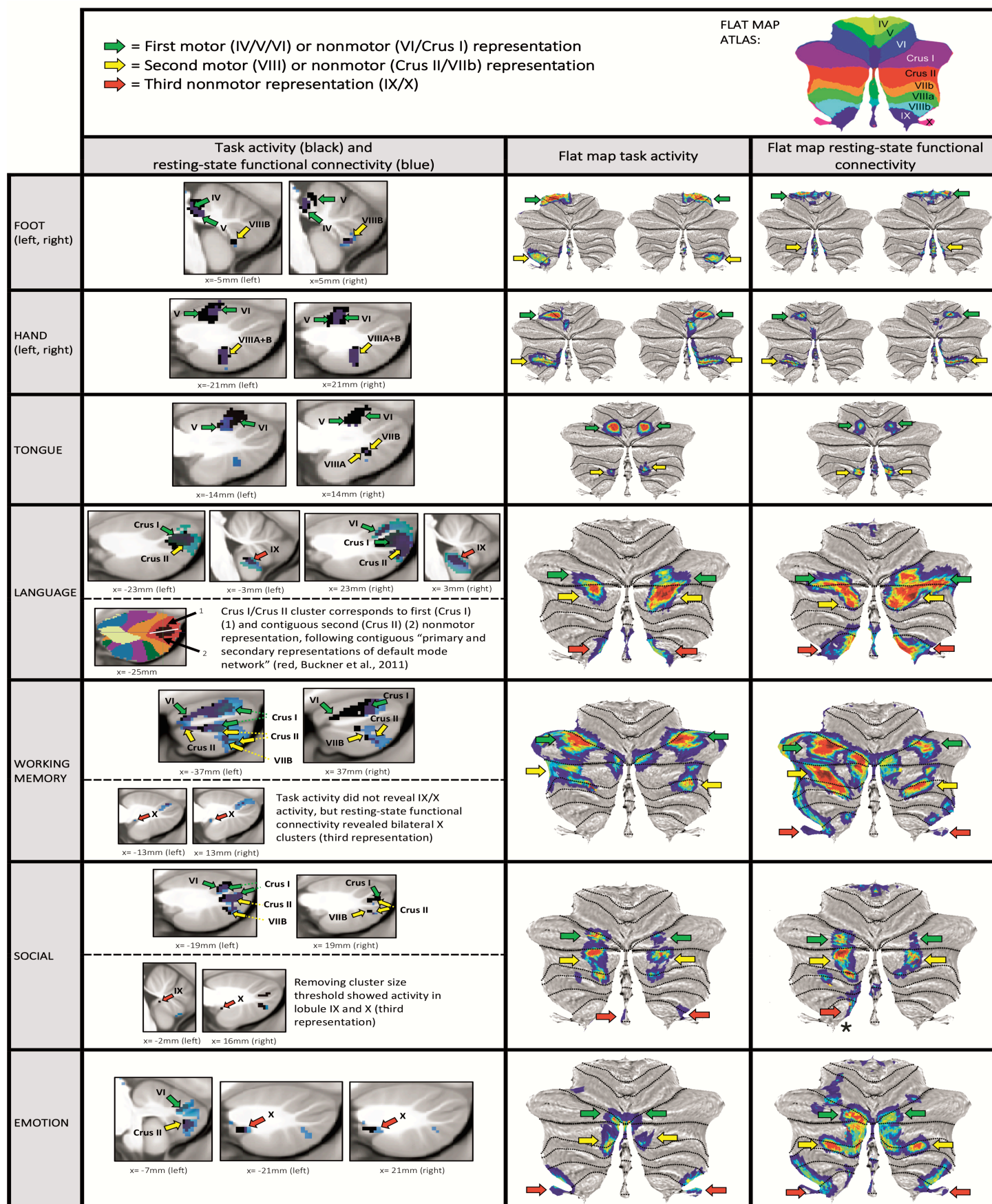


Fig. 4. Motor task contrasts revealed double representation (first = lobules IV/V/VI and second = lobule VIII); and nonmotor task contrasts revealed triple representation (first = lobules VI/Crus I; second = lobules Crus II/VII; and third = lobules IX/X), except for working memory task activation, which did not reveal a third representation. Resting-state functional connectivity overlapped with clusters of task activation, also revealing a pattern of double motor and triple nonmotor representation. First and second nonmotor representations are sometimes separate (e.g. working memory) and sometimes contiguous (e.g. language processing).

Key. First column images: Black = cerebellar task activation (thresholded at $d > 0.5$ [medium effect size] and cluster size $> 100 \text{ mm}^3$). Blue = resting-state functional connectivity calculated from cerebral cortical seed for each task contrast (thresholded at Fisher's $z > 0.309$, equivalent to $r > 0.3$ [medium effect size]). Second and third column images (flat maps) represent the same resting-state functional connectivity and task activation clusters with no cluster size threshold. Note that cluster size threshold removal does not violate our statistical approach (see section 2.4). Green arrows correspond to first motor or nonmotor representation, yellow arrows correspond to second motor or nonmotor representation, red arrows correspond to third nonmotor representation. Red arrow with an asterisk in social processing resting-state connectivity indicates lobule IX/X engagement that does not overlap with social processing task activation.

4. DISCUSSION

4.1 The double motor / triple nonmotor representation hypothesis – relevance and limitations

This is the first study to reveal a pattern of triple and largely distinct representations of cognitive, social, and emotional task processing in the human cerebellum, in addition to replicating the double representation of motor processes in the cerebellum. The triple representation of multiple cognitive, social, and emotional processes was evident in both task activation, which defines the psychological nature of each process, and in resting-state functional connectivity calculated from the peak Cohen's d of each task activation contrast (**Fig. 4**). Further, the outcomes of the independent cerebellar activation and cortical functional connectivity analyses were largely overlapping – this overlap provides strong convergent evidence for the triple representation of cognitive, social, and emotional functions in the cerebellum, and highlights the relevance of this organization for cortico-cerebellar interactions. Our hypothesis supports and substantially expands Buckner's description of triple representation of resting-state networks in the cerebellum (**Fig. 1C**, [Buckner et al., 2011](#)). The present findings, from an exceptionally large and high-quality dataset, provide new and fundamental insights into the functional organization of the human cerebellum. Additionally, this study provides a description of cerebellar motor and nonmotor task topography in the largest single cohort of participants studied to date. Activation patterns relative to previous studies are discussed in section 4.2.

We analyzed two aspects of cerebellar physiology – task activation and resting-state functional connectivity. Future studies might investigate whether the same organization applies to other dimensions of anatomical, physiological and pathological cerebellar topography. Previous descriptions in the literature indicate that this might be the case. For example, tract tracing studies in monkeys hint at the possibility of an anatomical correlate of the double motor / triple nonmotor organization: lobules VI/V/VI and VIII receive input from and project to M1, and lobules Crus I/Crus II and IX/X receive input from and project to area 46 (Kelly and Strick, 2003). Similarly, the finding of decreased grey matter in multiple cerebellar locations in autism (Crus I, VIII, and IX), ADHD (IV/Crus I, VIII, and IX) and dyslexia (VI and Crus II) might represent a pathological correlate of the double/triple representation organization (Stoodley, 2014). At a general level, this hypothesis that there is an overarching principle of organization encompassing cerebellar anatomy, physiology and pathology is in accord with current trends in contemporary neuroscience: functional connectivity patterns have been shown to be similar to task activation patterns (Smith et al., 2009), topography of neural degeneration in several diseases seems to follow connectional pathways (Seeley et al., 2009; Zhou et al., 2012; La Joie et al., 2014; Collins et al., 2017), and some resting-state functional networks represent structural connectivity (Greicius et al., 2009; Honey et al., 2009).

Some task contrasts revealed multiple clusters of activation at each area of representation. For example, working memory revealed two clusters in lobules VI/Crus I bilaterally, all four corresponding to first representation according to our hypothesis; and two left and one right Crus II/VIIIB clusters, all three corresponding to second representation according to our hypothesis. Multiple clusters of activation in one cerebellar region might appear to conflict with the notion that all activation within that area corresponds to the same representation of a given domain. However, multiple clusters of activation have also been observed within the well-established primary and secondary areas of representation of motor activation in the cerebellum. For instance, our analysis revealed two clusters both corresponding to second

representation of left foot movement (lobule VIII), two clusters both corresponding to first representation of left hand movement (V/VI), and two clusters both corresponding to first representation of right hand movement (IV/V/VI).

The HCP imaging protocol has the strength of being exceptionally comprehensive in measuring multiple domains, but also the limitation that each domain is assessed in a brief and broad fashion. For example, language processing is defined as a contrast between story listening versus math performance, and such a contrast involves many specific language processes including semantics, syntax, phonology, and pragmatics. Future studies will be needed to evaluate language and other domains in greater analytic detail. The comprehensive range of domains examined, however, is well suited to discovering broad organizational principles of cerebellar functions that may be domain-independent. Of note, while relational and incentive processing did not survive our effect size threshold impositions, these two additional domains also revealed a pattern of triple representation in both task processing and resting-state connectivity when using lower thresholds (**Supplementary Fig. 13**). The observation of a triple representation of multiple nonmotor domains in both task activation and resting-state connectivity supports the view that the triple nonmotor organization reflects a general property of cognitive and affective processing in the cerebellum, rather than a distribution unique to the particular task contrasts included in the present study.

The biological significance of the hypothesized double/triple representation organization remains to be determined. Our use of the terms “first”, “second” and “third” representation does not necessarily imply an analogy with, for example, the multiple cerebral cortical representations of motor function (Woolsey et al., 1952). This notwithstanding, clinical evidence suggests that the importance of the first and second representations of motor function in the cerebellum is not equal - lesion of lobules IV/V/VI results in more severe motor deficits than do lesions of lobule VIII (Schmahmann et al., 2009; Stoodley et al., 2016). Similarly, the observation of working

memory task activation and social processing resting-state connectivity only when lowering our threshold impositions (**Supplementary Fig. 12**) hints at the possibility that engagement of lobules IX/X in nonmotor processes might be more prominent in some cases. Future studies might investigate whether an asymmetry exists between the physiological and pathophysiological contributions of the apparent first, second and third representations of nonmotor functions in the cerebellum.

It did not escape our notice that the organization along a common sagittal axis of multiple representations of task activation of each task contrast (**Fig. 2, Supplementary Fig. 1**) is reminiscent of the organization along the parasagittal axis of the well-established molecular compartmentalization in the cerebellum, the zebrin stripes ([Brochu et al., 1990](#); [Oberdick et al., 1998](#); [Voogd and Glickstein, 1998](#)). This parasagittal organization also seems to be obeyed by corticonuclear and olivocerebellar projection fibers in the cerebellum (see figure 3A in [Voogd and Glickstein, 1998](#); also [Sugihara and Shinoda, 2004](#)). Therefore, it is a possibility that the pattern of multiple representations described here respects the sagittal organization of cerebellar fibers, extending vertically and therefore encompassing lobules IV/V/VI/Crus I (first motor and nonmotor representations), Crus II/VII/VIII (second motor and nonmotor representations) and IX/X (third nonmotor representation).

The nature of the contribution of the cerebellum to movement, thought and emotion is still being elucidated ([Schmahmann, 1997, 2010](#); [Koziol et al., 2014](#); [Mariën et al., 2014](#); [Baumann et al., 2015](#); [Adamaszek et al., 2017](#)), and the cerebellar structural and functional abnormalities in diseases such as depression, anxiety, bipolar disorder, schizophrenia, dyslexia, autism and ADHD remain areas of active investigation ([Phillips et al., 2015](#)). While still at an initial stage of development, the double/triple representation hypothesis might critically influence future studies investigating the anatomy, physiology and neuropsychiatry of the cerebellum and cortico-subcortical interactions. One immediate application of the double/triple representation

hypothesis is in the interpretation of cerebellar cognitive, social or affective task activation findings in healthy subjects or patient populations. Neuroimaging studies analyzing cerebellar task activation commonly report motor findings in terms of “first motor representation” (lobules IV/V/VI) and “second motor representation” (lobule VIII). Cognitive, social and affective task activation clusters have never been reported, to our knowledge, in terms of three representations (lobule IV/Crus I, Crus II/lobule VIIIB, and lobule IX/X) - it is reasonable to consider that this conception could crucially and immediately influence future interpretations of cerebellar task activation findings. We propose that just as the double motor representation has become the common clinical and scientific framework for interpreting motor functions of the cerebellum, now the triple non-motor representation should become the common clinical and scientific framework for interpreting the cognitive, social, and emotional functions of the cerebellum.

4.2 Cerebellar functional topography

This study provides a description of cerebellar motor and nonmotor task topography in the largest single cohort of participants studied to date. For this reason, in this section we provide an extensive description and discussion of activation patterns relative to previous studies, with a focus on the three principal previous reports of motor and nonmotor cerebellar topography (two meta-analyses by [Stoodley and Schmahmann, 2009](#) and [Keren-Happuch et al., 2014](#); and a group study by [Stoodley et al., 2012](#), n=9).

4.2.1 Motor versus nonmotor regions

A differentiation of motor versus nonmotor regions in the cerebellum has been supported by anatomical and clinical observations - evidence suggests that while lobules IV, V, VI and VIII are engaged in motor tasks, nonmotor processing occurs in lobules VI and VII. Projections carrying spinal cord input terminate in lobules IV, V and VIII, whereas projections carrying no spinal cord input terminate in lobules VI and VII (as reviewed in [Schmahmann, 2007](#); see also [Stoodley and](#)

[Schmahmann, 2010](#)). Similarly, while motor cortex is linked with lobules IV, V and VI, prefrontal cortex is linked with lobule VII ([Kelly and Strick, 2003](#)). Also, motor symptom presentation correlates preferentially with lesions in lobules IV, V and VI ([Schoch et al., 2006](#); [Schmahmann et al., 2009](#); [Stoodley et al., 2016](#)). While all three principal previous reports of motor and nonmotor cerebellar topography observed nonmotor activation which sometimes extended to lobules IV, V or VIII ([Stoodley and Schmahmann, 2009](#), working memory activation in lobule VIII; [Stoodley et al., 2012](#), working memory activation in lobule V and language processing activation in lobule VIII; [Keren-Happuch et al., 2014](#), working memory activation in lobule IV, V and VIII, language processing activation in lobule VIII and emotion processing activation in lobules IV, V and VIII), our analysis did not reveal cerebellar nonmotor activation in any of these locations. In this way, our findings strongly support the motor specificity of cerebellar lobules IV, V and VIII.

4.2.2 Independent representations of nonmotor regions

For the most part, there were distinct cerebellar activations for working memory, language, emotion, and social cognition. Although any claim for distinct representations necessarily rests upon a selected threshold, the absence of an activation with over 700 participants is highly suggestive of domain-specific representations of different kinds of cognition and emotion in the cerebellum. The exception was an overlap between activations for language and social tasks, perhaps reflecting similarities between cognitive processes engaged in these particular assessments of language (story listening) and social cognition (viewing socially interacting geometric shapes, possibly involving similar narrative components). Contrasting with previous studies reporting an overlap between cerebellar social processing activation and other executive and semantic functional regions ([Van Overwalle et al., 2014](#)), our observation supports a cerebellar domain-specific contribution to social cognition (as argued more recently in the re-interpretation of [Van Overwalle et al., 2014](#) in [Van Overwalle et al., 2015](#)).

4.2.3 Motor tasks

Motor task lateralization was evident. Right hand and foot tasks engaged the right cerebellum only, while left hand and foot tasks engaged the left cerebellum only. Tongue movements generated bilateral cerebellar activation.

As in previous reports ([Stoodley et al., 2012](#); [Stoodley and Schmahmann, 2009](#); see also [Snider and Eldred, 1952](#); [Rijntes et al., 1999](#); [Bushara et al., 2001](#); [Grodd et al., 2001](#); [Takanashi et al., 2003](#); [Thickbroom et al., 2003](#)), right hand movement generated activation in right lobules IV, V, VI and VIII. Of note, lobule VI motor activation was observed as an extension of lobule V motor activation and did not overlap with areas of cognitive task activation in lobule VI (see **Fig. 2**), further supporting the notion that distinct motor and cognitive functional subregions exist in the cerebellum even within lobules which are engaged in both motor and cognitive processing. All other motor tasks revealed a similar IV/V/VI and VIII distribution.

4.2.4 Working memory task

Cerebellar engagement in working memory tasks is reliably reported across multiple fMRI and PET studies (e.g. [Fiez et al., 1996](#); [Desmond et al., 1997](#); [Beneventi et al., 2007](#); [Hautzel et al., 2009](#); [Hayter et al., 2007](#); [Kirschen et al., 2005, 2010](#); [Marvel and Desmond, 2010](#)), and numerous publications report working memory deficits after cerebellar injury ([Schmahmann and Sherman, 1998](#); [Silveri et al., 1998](#); [Ravizza et al., 2006](#); [Peterbus et al., 2010](#)).

In agreement with the three principal previous reports of motor and nonmotor cerebellar topography ([Stoodley and Schmahmann, 2009](#); [Stoodley et al., 2012](#); [Keren-Happuch et al., 2014](#)), our analysis revealed activation in right and left Crus I. We also found left and right lobule VI activation, a finding that had been previously reported in [Stoodley and Schmahmann, 2009](#) and [Stoodley et al., 2012](#), but that was not replicated in [Keren-Happuch et al., 2014](#). Our results also indicate activation in right lobule VIIB, a finding previously reported in [Keren-Happuch et](#)

al., 2014). Additionally, our analysis showed cerebellar engagement in right Crus II, left Crus II and lobule VIIB; these areas had not been previously described in any of the three principal previous studies of motor and nonmotor cerebellar topography but are coherent with the well-established cognitive function of these regions (e.g. language, social cognition, spatial processing, executive function; see [Stoodley and Schmahmann, 2009](#); [Stoodley et al., 2012](#); [Keren-Happuch et al., 2014](#)).

4.2.5 Language processing task

Cerebellar injury has been shown to result in a constellation of language deficits. The original description of the CCAS ([Schmahmann and Sherman, 1998](#)) reported agrammatism, dysprosodia, anomia, verbal fluency and verbal working memory deficits; and later investigations also revealed metalinguistic deficits ([Guell et al., 2015](#)) (see [Mariën et al., 2014](#) for a review). Clinical ([Scott et al., 2001](#); [Gottwald et al., 2004](#)) and neuroimaging findings ([Fiez and Raichle, 1997](#); [Hubrich-Ungureanu et al., 2002](#); [Jansen et al., 2005](#)) support right-lateralization of language function in the cerebellum, and our analysis also revealed wider (cluster size) and stronger (Cohen's d) language activation in the right cerebellum. Consonant with the three principal previous reports of motor and nonmotor cerebellar topography ([Stoodley and Schmahmann, 2009](#); [Stoodley et al., 2012](#); [Keren-Happuch et al., 2014](#)), we found cerebellar engagement in right lobule VI. We also found activation in right Crus I, a finding that had been reported in [Stoodley and Schmahmann, 2009](#) and [Stoodley et al., 2012](#) but that had not been replicated in [Keren-Happuch et al., 2014](#). Analysis also revealed activation in left Crus I and right Crus II, as in [Keren-Happuch et al., 2014](#). Further, we observed right and left lobule IX and left Crus II activation. These areas had not been previously described in any of the three principal previous studies of motor and nonmotor cerebellar topography ([Stoodley and Schmahmann, 2009](#); [Stoodley et al., 2012](#); [Keren-Happuch et al., 2014](#)), but nonetheless have a well-established role in nonmotor processes (see section 4.2.8 for a discussion on lobule IX).

While [Stoodley and Schmahmann, 2009](#) and [Keren-Happuch et al., 2014](#) had previously reported activation in left lobule VI and Crus II vermis, our analysis did not replicate this finding.

4.2.6 Social processing task

Social processing was not investigated in the three principal previous studies of motor and nonmotor cerebellar topography ([Stoodley and Schmahmann, 2009](#); [Stoodley et al., 2012](#); [Keren-Happuch et al., 2014](#)). This notwithstanding, cerebellar social processing task activation has been reported in many previous PET and fMRI studies, as reviewed in a recent meta-analysis by [Van Overwalle et al., 2014](#). Notably, cerebellar injury has been shown to result in lack of empathy as well as difficulty with social cues and interactions ([Schmahmann et al., 2007](#); [Garrard et al., 2008](#); [Hoche et al., 2016](#)).

Our analysis revealed bilateral activation in Crus I, Crus II and VIIB as well as in left lobule VI - these observations match those in the meta-analysis by [Van Overwalle et al., 2014](#), which localized the majority of clusters of cerebellar social processing task activation in lobules VI, Crus I and II. [Van Overwalle et al., 2014](#) also identified a cluster in lobule IX, which was also found in our analysis after removing the cluster size threshold ($>100\text{mm}^3$).

4.2.7 Emotion processing task

Cerebellar engagement in emotion processing has been supported by functional neuroimaging ([Lane et al., 1997](#); [Schraa-Tam et al., 2012](#); [Baumann and Mattingley, 2012](#)), TMS ([Schutter et al., 2009](#); [Schutter and Van Honk, 2009](#); [Moulton et al., 2010](#)) and clinical studies ([Schmahmann and Sherman, 1998](#); [Schmahmann et al., 2007](#); [Turner et al., 2007](#)). Following the meta-analysis of [Keren-Happuch et al., 2014](#), our analysis also revealed activation in left Crus II and left lobule VI, as well as in Crus II vermis as reported in the meta-analysis of [Stoodley and Schmahmann, 2009](#).

We also observed cerebellar engagement in right and left lobule X, an area of activation which had been previously reported in a study using a negative faces vs neutral faces task contrast (Schraa-Tam et al., 2012). However, many other studies failed to identify lobule X emotion task activation (Stoodley and Schmahmann, 2009; Stoodley et al., 2012; Keren-Happuch et al., 2014; Baumann and Mattingley, 2012). The nature of the emotional stimuli may explain this apparent contradiction between studies. The emotional task in our analysis included angry and fearful faces, resembling the stimuli used in Schraa-Tam et al., 2012. In contrast, emotion tasks in other studies not revealing lobule X activation included a diverse range of emotions. Neuroimaging and cerebellar patient studies suggest that the cerebellum is engaged by negative rather than positive emotions (Turner et al., 2007; Baumann and Mattingley, 2012). The use of angry and fearful face expressions might therefore explain our observation of lobule X activation, and suggests that future neuroimaging task studies aiming to engage the limbic cerebellum may benefit from using negative valence emotion stimuli.

Given that the substrate of the cerebellar-vestibular system has long been thought to be lobule X, our finding suggests a relationship between the cerebellar-vestibular system and cerebellar emotion processing. This relationship was proposed by Schmahmann (1991): “(O)lder cerebellar regions consisting of the flocculonodular lobe, vermis, and associated fastigial and—to a lesser degree—globose nuclei, could perhaps be considered as the equivalent of the limbic cerebellum... concerned with primitive defense mechanisms including the autonomic manifestations of the fight or flight response, as well as with emotion, affect, and sexuality and, possibly, also with affectively important memory”. In line with this hypothesis, Schmahmann et al., 2007 reported two cases of patients with cerebellar injury including lobule X who presented with a vestibulocerebellar disorder as well as panic episodes - in both cases, panic episodes were precipitated and exaggerated by motion. Additionally, Levinson, 1989 observed 93% of prevalence of at least one cerebellar-vestibular sign in the electronystagmographic examination of patients diagnosed with an anxiety disorder (n=402), including panic disorder, generalized

anxiety disorder, post-traumatic stress disorder, social phobia and specific phobia. The fact that emotion processing activates lobule X suggests a potential shared anatomical substrate of emotion processing and vestibular function, and thus potentially explains anxiety in patients with lesions of the vestibulocerebellum (lobule X), as well as cerebellar-vestibular abnormalities in patients with primary anxiety disorders.

As in previous reports ([Stoodley et al., 2009](#); [Baumann and Mattingley, 2012](#); [Keren-Happuch et al., 2014](#)), we identified emotion processing task activation at the cerebellar vermis (see **Fig. 4**). This observation supports the vermal “limbic cerebellum” hypothesis ([Schmahmann, 1991, 2000, 2004](#)), which draws on the connections of this structure with limbic brain areas ([Schmahmann, 1996](#)), reports of modulation of emotion following cerebellar midline manipulation or stimulation in animals and humans ([Heath, 1977](#); [Berman et al., 1978](#); [Levisohn et al., 2000](#)), as well as with clinical observations revealing vermal involvement in patients with pronounced affective symptoms ([Schmahmann and Sherman, 1998](#); [Levisohn et al., 2000](#); [Gudrunardottir et al., 2016](#)).

4.2.8 Nonmotor cerebellar activation in lobules IX and X

Lobule IX is considered important for visual guidance of movement, and vestibular function is attributed to lobule X ([Voogd et al., 1996](#); [Stoodley and Schmahmann, 2010](#)). With the exception of emotion processing activation in lobule IX ([Keren-Happuch et al., 2014](#)), nonmotor task activation has not been reported in lobules IX or X in any of the three principal previous studies of motor and nonmotor cerebellar topography ([Stoodley and Schmahmann, 2009](#); [Stoodley et al., 2012](#); [Keren-Happuch et al., 2014](#)). In contrast, our analysis revealed lobule IX/X nonmotor activation in multiple nonmotor task activation and resting-state connectivity maps. These observations are harmonious with previous studies reporting nonmotor lobule IX activation (e.g. working memory, [Desmond et al., 1997](#); timing perception, [Liu et al., 2008](#); emotion processing, [Schraa-Tam et al., 2012](#)); as well as default-mode network representation

in lobule IX ([Habas et al., 2009](#); [Krienen and Buckner, 2009](#); [O'Reilly et al., 2010](#); [Buckner et al., 2011](#)) and representation of dorsal attention and frontoparietal networks in lobule X ([Buckner et al., 2011](#)).

4.2.9 Task contrasts which did not reveal cerebellar activation

Although previous studies have shown cerebellar activation in reward ([Völlm et al., 2007](#); [Nees et al., 2012](#); [Shigemune et al., 2014](#); [Kahn et al., 2015](#), [Katahira et al., 2015](#)) and loss/punishment tasks ([Völlm et al., 2007](#); [White et al., 2014](#)), our analysis and Cohen's d threshold of $d > 0.5$ did not reveal cerebellar activation in the *Punish* minus *Reward* or *Reward* minus *Punish* task contrasts (maximum cerebellar $d = 0.15$ and $d = 0.26$, respectively).

In the reasoning “*relational*” condition, participants had to infer the dimension of difference between two objects (e.g. shape or texture) and then infer whether two other objects differed along the same dimension. In the control (“*match*”) condition, participants saw three objects and had to infer whether the third object matched any of the first two objects in a specified dimension (shape or texture). In this way, the *Relational* minus *Match* task contrast assessed the cognitive process of relational matching, which includes reasoning and working memory processes ([Smith et al., 2007](#)). Ample evidence supports a cerebellar role in such functions (e.g. [Schmahmann and Sherman, 1998](#); [Stoodley et al., 2009](#); [Keren-Happuch et al., 2014](#); and also this present study), but maximum cerebellar Cohen's d value for *Relational* minus *Match* was 0.45 in our analysis. As an attempt to display clusters of activation which are not only statistically significant in the context of a large sample size, we established a Cohen's d threshold of 0.5 (medium effect size, [Cohen, 1988](#)) and therefore did not show functional task topography for the punish/reward and relational task contrasts. Lower thresholding in these tasks is reported in Supplementary Fig. 13.

5. CONCLUSION

We show for the first time that there is a triple representation of nonmotor task activation in the cerebellum. A resting-state analysis from seeds placed at each task activation peak in the cerebral cortex revealed an overlapping pattern, providing strong convergent evidence for the double motor / triple nonmotor organization. These findings unmask novel and fundamental questions which might become critical for the understanding of cerebellar physiology and pathophysiology at the systems-level. It is known that cerebellar damage to the first motor representation results in motor deficits more severe than after damage to the second motor representation ([Schmahmann et al., 2009](#); [Stoodley et al., 2016](#)) - what are the distinct consequences of injury to the areas of first, second and third nonmotor representation? Do structural and/or functional abnormalities in psychiatric diseases map to any of these areas preferentially? What is the contribution of each representation to nonmotor processing in the cerebellum? - can a task contrast analysis demonstrate preferential engagement of a particular nonmotor representation (first, second or third) for a particular task characteristic, perhaps consistently across cognitive domains? What is the relationship between the two motor and three nonmotor representations? - do any asymmetries (physiological or pathophysiological) between the first and second motor representations extrapolate to their adjacent first nonmotor and second/third nonmotor representations? In many ways the discovery of three task processing representations in each of multiple non-cognitive domains opens up more questions than it answers, but this discovery also establishes a fundamental organizational principle of the human cerebellum that ought to be a guiding framework for future clinical and basic science research.

FUNDING

This work was supported in part by the La Caixa Banking Foundation and the MINDlink foundation. Data were provided by the Human Connectome Project, WU-Minn Consortium (Principal Investigators: David Van Essen and Kamil Ugurbil; 1U54MH091657) funded by the 16 National Institutes of Health and Centers that support the National Institutes of Health Blueprint for Neuroscience Research; and by the McDonnell Center for Systems Neuroscience at Washington University.

ACKNOWLEDGMENTS

We thank Susan Whitfield-Gabrieli, Satrajit S. Ghosh and Oscar Vilarroya for discussion.

REFERENCES

- Adamaszek M, D'Agata F, Ferrucci R, et al. 2017. Consensus Paper: Cerebellum and Emotion. *Cerebellum*. 16(2):552-576.
- Baillieux H, De Smet HJ, Paquier PF, De Deyn PP, Mariën P. 2008. Cerebellar neurocognition: insights into the bottom of the brain. *Clin Neurol Neurosurg*. 110(8):763-73.
- Barch DM, Burgess GC, Harms MP, et al. 2013. Function in the human connectome: task-fMRI and individual differences in behavior. *Neuroimage*. 80:169-89.
- Baumann O, Mattingley JB. 2012. Functional topography of primary emotion processing in the human cerebellum. *Neuroimage*. 61(4):805-11.
- Baumann O, Borra RJ, Bower JM, et al. 2015. Consensus paper: the role of the cerebellum in perceptual processes. *Cerebellum*. 14(2):197-220.
- Beneventi H, Barndon R, Ersland L, Hugdahl K. 2007. An fMRI study of working memory for schematic facial expressions. *Scand J Psychol*. 48(2):81-6.
- Berman AF, Berman D, Prescott JW. 1978. The effect of cerebellar lesions on emotional behavior in the rhesus monkey. In: Cooper IS, Riklan M, Snider RS, editors. *The cerebellum, epilepsy and behavior*. New York: Plenum Press. pp. 277-84.
- Bigler ED, Mortensen S, Neeley ES, et al. 2007. Superior temporal gyrus, language function, and autism. *Dev Neuropsychol*. 31(2):217-38.
- Binder JR, Gross WL, Allendorfer JB, et al. 2011. Mapping anterior temporal lobe language areas with fMRI: a multicenter normative study. *Neuroimage*. 54:1465-1475.
- Brochu G, Maler L, Hawkes R. Zebrin II: a polypeptide antigen expressed selectively by Purkinje cells reveals compartments in rat and fish cerebellum. 1990. *J Comp Neurol*. 291(4):538-52.
- Buckner RL, Krienen FM, Castellanos A, Diaz JC, Yeo BT. 2011. The organization of the human cerebellum estimated by intrinsic functional connectivity. *Journal of neurophysiology*. 106:2322-2345.
- Bushara KO, Wheat JM, Khan A, et al. Multiple tactile maps in the human cerebellum. 2001. *Neuroreport*. 12(11):2483-6.
- Castelli F, Happé F, Frith U, Frith C. 2000. Movement and mind: a functional imaging study of perception and interpretation of complex intentional movement patterns. *Neuroimage*. 12:314-325.

- Cohen J. 1988. Statistical power analysis for the behavioral sciences (2nd ed). Hillsdale: Lawrence Erlbaum Associates.
- Collins JA, Montal V, Hochberg D, et al. 2017. Focal temporal pole atrophy and network degeneration in semantic variant primary progressive aphasia. *Brain*. 140(2):457-471.
- Combs CM. 1954. Electro-anatomical study of cerebellar localization; stimulation of various afferents. *J Neurophysiol*. 17(2):123-43.
- Barch DM, Burgess GC, Harms MP, et al. 2013. Function in the human connectome: task-fMRI and individual differences in behavior. *Neuroimage*. 80:169-189.
- Dapretto M, Davies MS, Pfeifer JH, et al. 2006. Understanding emotions in others: mirror neuron dysfunction in children with autism spectrum disorders. *Nat Neurosci*. 9(1):28-30.
- Delgado MR, Nystrom LE, Fissell C, Noll D, Fiez JA. 2000. Tracking the hemodynamic responses to reward and punishment in the striatum. *Journal of neurophysiology*. 84:3072-3077.
- Desmond JE, Gabrieli JD, Wagner AD, Ginier BL, Glover GH. 1997. Lobular patterns of cerebellar activation in verbal working-memory and finger-tapping tasks as revealed by functional MRI. *J Neurosci*. 17(24):9675-85.
- Diedrichsen J. 2006. A spatially unbiased atlas template of the human cerebellum. *Neuroimage*. 33(1):127-38.
- Diedrichsen J, Balsters JH, Flavell J, Cussans E, Ramnani N. 2009. A probabilistic MR atlas of the human cerebellum. *Neuroimage*. 46(1):39-46.
- Diedrichsen J, Zotow E. 2015. Surface-Based Display of Volume-Averaged Cerebellar Imaging Data. *PLoS ONE*. 10(7):e0133402.
- Dow RS. 1939. Cerebellar action potentials in response to stimulation of various afferent connections. *J Neurophysiol*. 2:543-555.
- Dum RP, Strick PL. 2003. An unfolded map of the cerebellar dentate nucleus and its projections to the cerebral cortex. *J Neurophysiol*. 89(1): 634-9.
- Keren-Happuch E, Chen SH, Ho MH, Desmond JE. 2014. A meta-analysis of cerebellar contributions to higher cognition from PET and fMRI studies. *Hum Brain Mapp*. 35(2):593-615.
- Feinberg DA, Moeller S, Smith SM, et al. 2010. Multiplexed echo planar imaging for sub-second whole brain FMRI and fast diffusion imaging. *PLoS ONE*. 5(12):e15710.
- Fiez JA, Raife EA, Balota DA, Schwarz JP, Raichle ME, Petersen SE. 1996. A positron emission tomography study of the short-term maintenance of verbal information. *J Neurosci*. 16(2):808-22.
- Fiez JA, Raichle M. 1997. Linguistic processing. In: Schmahmann J, editor. *The cerebellum and cognition*. International Review of Neurobiology. Vol. 47. San Diego: Academic Press. pp. 233–254.
- Fischl B. 2012. FreeSurfer. *NeuroImage*. 62:774-781.
- Garrard P, Martin NH, Giunti P, Cipolotti L. 2008. Cognitive and social cognitive functioning in spinocerebellar ataxia: a preliminary characterization. *J Neurol*. 255:398–405.
- Glasser MF, Van Essen DC. 2011. Mapping human cortical areas in vivo based on myelin content as revealed by T1- and T2-weighted MRI. *J Neurosci*. 31(32):11597-616.
- Glasser MF, Sotiropoulos SN, Wilson JA, et al. 2013. The minimal preprocessing pipelines for the Human Connectome Project. *Neuroimage*. 80:105-24.
- Glasser MF, Coalson TS, Robinson EC, et al. 2016. A multi-modal parcellation of human cerebral cortex. *Nature*. 536(7615):171-8.
- Gottwald B, Wilde B, Mihajlovic Z, Mehdorn HM. 2004. Evidence for distinct cognitive deficits after focal cerebellar lesions. *J Neurol Neurosurg Psychiatr*. 75(11):1524-31.
- Greicius MD, Supekar K, Menon V, Dougherty RF. 2009. Resting-state functional connectivity reflects structural connectivity in the default mode network. *Cereb Cortex*. 19(1):72-8.
- Grodd W, Hülsmann E, Lotze M, Wildgruber D, Erb M. 2001. Sensorimotor mapping of the human cerebellum: fMRI evidence of somatotopic organization. *Hum Brain Mapp*. 13(2):55-73.
- Gudrunardottir T, Morgan AT, Lux AL, et al. 2016. Consensus paper on post-operative pediatric cerebellar mutism syndrome: the Iceland Delphi results. *Childs Nerv Syst*. 32(7):1195-203.
- Guell X, Hoche F, Schmahmann JD. 2015. Metalinguistic deficits in patients with cerebellar dysfunction: empirical support for the dysmetria of thought theory. *Cerebellum*. 14(1):50-8.

- Guell X, Gabrieli JDE, Schmahmann JD. 2017. Embodied cognition and the cerebellum: Perspectives from the Dysmetria of Thought and the Universal Cerebellar Transform theories. *Cortex*. doi: 10.1016/j.cortex.2017.07.005.
- Habas C, Kamdar N, Nguyen D, et al. 2009. Distinct cerebellar contributions to intrinsic connectivity networks. *J Neurosci*. 29(26):8586-94.
- Hariri AR, Tessitore A, Mattay VS, Fera F, Weinberger DR. 2002. The amygdala response to emotional stimuli: a comparison of faces and scenes. *Neuroimage*. 17:317-323.
- Hautzel H, Mottaghy FM, Specht K, Müller HW, Krause BJ. 2009. Evidence of a modality-dependent role of the cerebellum in working memory? An fMRI study comparing verbal and abstract n-back tasks. *Neuroimage*. 47(4):2073-82.
- Hayter AL, Langdon DW, Ramnani N. 2007. Cerebellar contributions to working memory. *Neuroimage*. 36(3):943-54.
- Heath RG. 1977. Modulation of emotion with a brain pacemaker. Treatment for intractable psychiatric illness. *J Nerv Ment Dis*. 165(5):300-17.
- Hoche F, Guell X, Sherman JC, Vangel MG, Schmahmann JD. 2016. Cerebellar Contribution to Social Cognition. *Cerebellum*. 15(6):732-743.
- Hoche F, Guell X, Vangel MG, Sherman JC, Schmahmann JD. 2017. The cerebellar cognitive affective/Schmahmann syndrome scale. *Brain*. In press.
- Honey CJ, Sporns O, Cammoun L, et al. 2009. Predicting human resting-state functional connectivity from structural connectivity. *Proc Natl Acad Sci USA*. 106(6):2035-40.
- Hubrich-Ungureanu P, Kaemmerer N, Henn FA, Braus DF. 2002. Lateralized organization of the cerebellum in a silent verbal fluency task: a functional magnetic resonance imaging study in healthy volunteers. *Neurosci Lett*. 319(2):91-4.
- Ito M. 1993. Movement and thought: identical control mechanisms by the cerebellum. *Trends Neurosci*. 16(11):448-50.
- Jansen A, Flöel A, Van Randenborgh J, et al. 2005. Crossed cerebro-cerebellar language dominance. *Hum Brain Mapp*. 24(3):165-72.
- Jenkinson M, Bannister PR, Brady JM, and Smith SM. 2002. Improved optimisation for the robust and accurate linear registration and motion correction of brain images. *Neuroimage*. 17(2):825-841.
- Jenkinson M, Beckmann CF, Behrens TE, Woolrich MW, and Smith SM. 2012. FSL. *Neuroimage*. 62:782-790.
- Kahn LE, Peake SJ, Dishion TJ, Stormshak EA, Pfeifer JH. 2015. Learning to play it safe (or not): stable and evolving neural responses during adolescent risky decision-making. *J Cogn Neurosci*. 27(1):13-25.
- Katahira K, Matsuda YT, Fujimura T, et al. 2015. Neural basis of decision making guided by emotional outcomes. *J Neurophysiol*. 113(9):3056-68.
- Kelly RM, Strick PL. 2003. Cerebellar loops with motor cortex and prefrontal cortex of a nonhuman primate. *J Neurosci*. 23(23):8432-44.
- Kirschen MP, Chen SH, Desmond JE. 2010. Modality specific cerebro-cerebellar activations in verbal working memory: an fMRI study. *Behav Neurol*. 23(1-2):51-63.
- Kirschen MP, Chen SH, Schraedley-Desmond P, Desmond JE. 2005. Load- and practice-dependent increases in cerebro-cerebellar activation in verbal working memory: an fMRI study. *Neuroimage*. 24(2):462-72.
- Koenigs M, Barbey AK, Postle BR, Grafman J. 2009. Superior parietal cortex is critical for the manipulation of information in working memory. *J Neurosci*. 29(47):14980-6.
- Koziol LF, Budding D, Andreasen N, et al. 2014. Consensus paper: the cerebellum's role in movement and cognition. *Cerebellum*. 13(1):151-77.
- Kravitz DJ, Saleem KS, Baker CI, Ungerleider LG, Mishkin M. 2013. The ventral visual pathway: an expanded neural framework for the processing of object quality. *Trends Cogn Sci*. 17(1):26-49.
- Krienen FM, Buckner RL. 2009. Segregated fronto-cerebellar circuits revealed by intrinsic functional connectivity. *Cereb Cortex*. 19(10):2485-97.

- La Joie R, Landeau B, Perrotin A, et al. 2014. Intrinsic connectivity identifies the hippocampus as a main crossroad between Alzheimer's and semantic dementia-targeted networks. *Neuron*. 81(6):1417-28.
- Lane RD, Reiman EM, Ahern GL, Schwartz GE, Davidson RJ. 1997. Neuroanatomical correlates of happiness, sadness, and disgust. *Am J Psychiatry*. 154(7):926-33.
- Levinson HN. 1989. The cerebellar-vestibular predisposition to anxiety disorders. *Percept Mot Skills*. 68(1):323-38.
- Levisohn L, Cronin-Golomb A, Schmahmann JD. 2000. Neuropsychological consequences of cerebellar tumour resection in children: cerebellar cognitive affective syndrome in a paediatric population. *Brain*. 123:1041-50.
- Liu T, Xu D, Ashe J, Bushara K. 2008. Specificity of inferior olive response to stimulus timing. *J Neurophysiol*. 100(3):1557-61.
- Manto M, Mariën P. 2015. Schmahmann's syndrome - identification of the third cornerstone of clinical ataxiology. *Cerebellum Ataxias*. 2:2.
- Marcus DS, Harwell J, Olsen T, et al. 2011. Informatics and data mining tools and strategies for the human connectome project. *Front Neuroinform*. 5:4.
- Mariën P, Ackermann H, Adamaszek M, et al. 2014. Consensus paper: Language and the cerebellum: an ongoing enigma. *Cerebellum*. 13(3):386-410.
- Marvel CL, Desmond JE. 2010. The contributions of cerebro-cerebellar circuitry to executive verbal working memory. *Cortex*. 46(7):880-95.
- Middleton FA, Strick PL. 1994. Anatomical evidence for cerebellar and basal ganglia involvement in higher cognitive function. *Science*. 266(5184):458-61.
- Middleton FA, Strick PL. 1998. Cerebellar output: motor and cognitive channels. *Trends Cogn Sci*. 2(9):348-54.
- Milchenko M, Marcus D. 2013. Obscuring surface anatomy in volumetric imaging data. *Neuroinformatics*. 11(1):65-75.
- Moeller S, Yacoub E, Olan CA, et al. 2010. Multiband multislice GE-EPI at 7 tesla, with 16-fold acceleration using partial parallel imaging with application to high spatial and temporal whole-brain fMRI. *Magn Reson Med*. 63(5):1144-53.
- Moulton EA, Schmahmann JD, Becerra L, Borsook D. 2010. The Cerebellum and Pain: Passive Integrator or Active Participator? *Brain Res Rev*. 65(1):14-27.
- Nees F, Vollstädt-Klein S, Fauth-Bühler M, et al. 2012. A target sample of adolescents and reward processing: same neural and behavioral correlates engaged in common paradigms?. *Exp Brain Res*. 223(3):429-39.
- O'Reilly JX, Beckmann CF, Tomassini V, Ramnani N, Johansen-Berg H. 2010. Distinct and overlapping functional zones in the cerebellum defined by resting state functional connectivity. *Cereb Cortex*. 20(4):953-65.
- Oberdick J, Baader SL, Schilling K. 1998. From zebra stripes to postal zones: deciphering patterns of gene expression in the cerebellum. *Trends Neurosci*. 21(9):383-90.
- Oscarsson O. 1965. Functional organization of the spino- and cuneocerebellar tracts. *Physiol Rev*. 45:495-522.
- Peterburs J, Bellebaum C, Koch B, Schwarz M, Daum I. 2010. Working memory and verbal fluency deficits following cerebellar lesions: relation to interindividual differences in patient variables. *Cerebellum*. 9(3):375-83.
- Phillips JR, Hewedi DH, Eissa AM, Moustafa AA. 2015. The cerebellum and psychiatric disorders. *Front Public Health*. 3:66.
- Ravizza SM, McCormick CA, Schlerf JE, Justus T, Ivry RB, Fiez JA. 2006. Cerebellar damage produces selective deficits in verbal working memory. *Brain*. 129(2):306-20.
- Rijntjes M, Buechel C, Kiebel S, Weiller C. 1999. Multiple somatotopic representations in the human cerebellum. *Neuroreport*. 10(17):3653-8.
- Riva D, Giorgi C. 2000. The cerebellum contributes to higher functions during development: evidence from a series of children surgically treated for posterior fossa tumours. *Brain*. 123(5):1051-61.

- Robinson EC, Jbabdi S, Glasser MF, et al. 2014. MSM: a new flexible framework for Multimodal Surface Matching. *Neuroimage*. 100:414-26.
- Schmahmann JD. 1991. An emerging concept: The cerebellar contribution to higher function. *Arch. Neurol*. 48:1178-1187.
- Schmahmann JD. 1996. From movement to thought: anatomic substrates of the cerebellar contribution to cognitive processing. *Hum Brain Mapp*. 4(3):174-98.
- Schmahmann JD (Ed.). 1997. *The Cerebellum and Cognition*. San Diego: Academic Press. Int. Rev. Neurobiol.
- Schmahmann JD. 2000. The role of the cerebellum in affect and psychosis. *Journal of Neurolinguistics*. 13:189-214.
- Schmahmann JD. 2001. The cerebrocerebellar system: anatomic substrates of the cerebellar contribution to cognition and emotion. *Int Rev Psychiatry*. 13(4):247-60.
- Schmahmann JD. 2004. Disorders of the cerebellum: ataxia, dysmetria of thought, and the cerebellar cognitive affective syndrome. *J Neuropsychiatry Clin Neurosci*. 16(3):367-78.
- Schmahmann JD. 2007. Cerebellum and Spinal Cord - Principles of Development, Anatomical Organization, and Functional Relevance. In: Brice A, Pulst S, editors. *Spinocerebellar Degenerations: The Ataxias and Spastic Paraplegias*. New York: Elsevier. pp. 1 – 60.
- Schmahmann JD. 2010. The role of the cerebellum in cognition and emotion: personal reflections since 1982 on the dysmetria of thought hypothesis, and its historical evolution from theory to therapy. *Neuropsychol Rev*. 20(3):236-60.
- Schmahmann JD, Pandya DN. 1989. Anatomical investigation of projections to the basis pontis from posterior parietal association cortices in rhesus monkey. *J Comp Neurol*. 289(1): 53-73.
- Schmahmann JD, Pandya DN. 1991. Projections to the basis pontis from the superior temporal sulcus and superior temporal region in the rhesus monkey. *J Comp Neurol*. 308:224-248.
- Schmahmann JD, Pandya DN. 1993. Prelunate, occipitotemporal, and parahippocampal projections to the basis pontis in rhesus monkey. *J Comp Neurol*. 337:94-112.
- Schmahmann JD, Pandya DN. 1995. Prefrontal cortex projections to the basilar pons: implications for the cerebellar contribution to higher function. *Neuroscience Letters* 199:175-178.
- Schmahmann JD and Pandya DN. 1997a. Anatomic organization of the basilar pontine projections from prefrontal cortices in rhesus monkey. *J Neurosci*. 17:438-458.
- Schmahmann JD, Pandya DN. 1997b. The cerebrocerebellar system. In: Schmahmann JD, ed., *The Cerebellum and Cognition*. San Diego: Academic Press. Int Rev Neurobiol. 41:31-60.
- Schmahmann JD, Sherman JC. 1998. The cerebellar cognitive affective syndrome. *Brain*. 121:561-79.
- Schmahmann JD, Doyon J, Toga A, Petrides M, Evans A. 2000. *MRI Atlas of the Human Cerebellum*. San Diego: Academic Press.
- Schmahmann JD, Weilburg JB, Sherman JC. 2007. The neuropsychiatry of the cerebellum - insights from the clinic. *Cerebellum*. 6(3):254-67.
- Schmahmann JD, Pandya DN. 2008. Disconnection syndromes of basal ganglia, thalamus, and cerebrocerebellar systems. *Cortex*. 44(8):1037-66.
- Schmahmann JD, Macmore J, Vangel M. 2009. Cerebellar stroke without motor deficit: clinical evidence for motor and non-motor domains within the human cerebellum. *Neuroscience*. 162(3):852-61.
- Schoch B, Dimitrova A, Gizewski ER, Timmann D. 2006. Functional localization in the human cerebellum based on voxelwise statistical analysis: a study of 90 patients. *Neuroimage*. 30(1):36-51.
- Schraa-Tam CK, Rietdijk WJ, Verbeke WJ, et al. 2012. fMRI activities in the emotional cerebellum: a preference for negative stimuli and goal-directed behavior. *Cerebellum*. 11(1):233-45.
- Schutter DJ, Enter D, Hoppenbrouwers SS. 2009. High-frequency repetitive transcranial magnetic stimulation to the cerebellum and implicit processing of happy facial expressions. *J Psychiatry Neurosci*. 34(1):60-5.

- Schutter DJ, Van Honk J. 2009. The cerebellum in emotion regulation: a repetitive transcranial magnetic stimulation study. *Cerebellum*. 8(1):28-34.
- Scott RB, Stoodley CJ, Anslow P, et al. 2001. Lateralized cognitive deficits in children following cerebellar lesions. *Dev Med Child Neurol*. 43(10):685-91.
- Seeley WW, Crawford RK, Zhou J, Miller BL, Greicius MD. 2009. Neurodegenerative diseases target large-scale human brain networks. *Neuron*. 62(1):42-52.
- Seghier ML. 2013. The Angular Gyrus. *Neuroscientist*. 19(1):43-61.
- Setsompop K, Gagoski BA, Polimeni JR, Witzel T, Wedeen VJ, Wald LL. 2012. Blipped-controlled aliasing in parallel imaging for simultaneous multislice echo planar imaging with reduced g-factor penalty. *Magn Reson Med*. 67(5):1210-24.
- Shigemune Y, Tsukiura T, Kambara T, Kawashima R. 2014. Remembering with gains and losses: effects of monetary reward and punishment on successful encoding activation of source memories. *Cereb Cortex*. 24(5):1319-31.
- Silveri MC, Di Betta AM, Filippini V, Leggio MG, Molinari M. 1998. Verbal short-term store-rehearsal system and the cerebellum. Evidence from a patient with a right cerebellar lesion. *Brain*. 121(11):2175-87.
- Smith SM, Fox PT, Miller KL, et al. 2009. Correspondence of the brain's functional architecture during activation and rest. *Proc Natl Acad Sci USA*. 106(31):13040-5.
- Smith, R., Keramatian, K., Christoff, K. 2007. Localizing the rostrolateral prefrontal cortex at the individual level. *Neuroimage*. 36:1387-1396
- Snider RS, Eldred E. 1952. Cerebrocerebellar relationships in the monkey. *J Neurophysiol*. 15(1):27-40.
- Strick PL, Dum RP, Fiez JA. 2009. Cerebellum and nonmotor function. *Annu Rev Neurosci*. 32:413-34.
- Stoodley CJ, Schmahmann JD. 2009. Functional topography in the human cerebellum: a meta-analysis of neuroimaging studies. *Neuroimage*. 44(2):489-501.
- Stoodley CJ, Valera EM, Schmahmann JD. 2010. An fMRI study of intra-individual functional topography in the human cerebellum. *Behav Neurol*. 23(1-2):65-79.
- Stoodley CJ, Valera EM, Schmahmann JD. 2012. Functional topography of the cerebellum for motor and cognitive tasks: an fMRI study. *Neuroimage*. 59(2):1560-70.
- Stoodley CJ. 2014. Distinct regions of the cerebellum show gray matter decreases in autism, ADHD, and developmental dyslexia. *Front Syst Neurosci*. 8:92.
- Stoodley CJ, Macmore JP, Makris N, Sherman JC, Schmahmann JD. 2016. Location of lesion determines motor vs. cognitive consequences in patients with cerebellar stroke. *Neuroimage Clin*. 12:765-775.
- Sugihara I, Shinoda Y. 2004. Molecular, topographic, and functional organization of the cerebellar cortex: a study with combined aldolase C and olivocerebellar labeling. *J Neurosci*. 24(40):8771-85.
- Takanashi M, Abe K, Yanagihara T, et al. 2003. A functional MRI study of somatotopic representation of somatosensory stimulation in the cerebellum. *Neuroradiology*. 45(3):149-52.
- Tedesco AM, Chiricozzi FR, Clausi S, Lupo M, Molinari M, Leggio MG. 2011. The cerebellar cognitive profile. *Brain*. 134(12):3672-86.
- Thickbroom GW, Byrnes ML, Mastaglia FL. 2003. Dual representation of the hand in the cerebellum: activation with voluntary and passive finger movement. *Neuroimage*. 18(3):670-4.
- Thompson RF, Steinmetz JE. 2009. The role of the cerebellum in classical conditioning of discrete behavioral responses. *Neuroscience*. 162(3):732-55.
- Turner BM, Paradiso S, Marvel CL, et al. 2007. The cerebellum and emotional experience. *Neuropsychologia*. 45(6):1331-41.
- Van Essen DC, Smith SM, Barch DM, et al. 2013. The WU-Minn Human Connectome Project: an overview. *Neuroimage*. 80:62-79.
- Van Overwalle F, Baetens K, Mariën P, Vandekerckhove M. 2014. Social cognition and the cerebellum: a meta-analysis of over 350 fMRI studies. *Neuroimage*. 86:554-72.

- Van Overwalle F, Baetens K, Marien P, Vandekerckhove M. 2015. Cerebellar areas dedicated to social cognition? A comparison of meta-analytic and connectivity results. *Social Neuroscience*. 10(4):337-344.
- Völlm B, Richardson P, McKie S, Elliott R, Dolan M, Deakin B. 2007. Neuronal correlates of reward and loss in Cluster B personality disorders: a functional magnetic resonance imaging study. *Psychiatry Res*. 156(2):151-67.
- Voogd J, Gerrits NM, Ruigrok TJ. 1996. Organization of the vestibulocerebellum. *Ann N Y Acad Sci*. 781:553-79.
- Voogd J, Glickstein M. 1998. The anatomy of the cerebellum. *Trends Neurosci*. 21(9):370-5.
- Wheatley, T., Milleville, S.C., Martin, A. 2007. Understanding animate agents: distinct roles for the social network and mirror system. *Psychological science* 18, 469-474.
- White SF, Brislin SJ, Sinclair S, Blair JR. 2014. Punishing unfairness: rewarding or the organization of a reactively aggressive response?. *Hum Brain Mapp*. 35(5):2137-47.
- Woolrich MW, Ripley BD, Brady JM, and Smith SM. 2001. Temporal autocorrelation in univariate linear modelling of fMRI data. *Neuroimage* 14(6):1370-1386.
- Woolsey CN. 1952. Summary of the papers on the cerebellum. *Res Publ Assoc Res Nerv Ment Dis*. 30:334-6.
- Woolsey CN, Settlage PH, Meyer DR, Sencer W, Pinto hamuy T, Travis AM. 1952. Patterns of localization in precentral and "supplementary" motor areas and their relation to the concept of a premotor area. *Res Publ Assoc Res Nerv Ment Dis*. 30:238-64.
- Xu J, Moeller S, Strupp J, Auerbach E, Feinberg DA, Ugurbil K, Yacoub E. 2012. Highly accelerated whole brain imaging using aligned-blipped-controlled-aliasing multiband EPI. *Proc Int Soc Mag Reson Med*. 20:2306.
- Yeo BT, Krienen FM, Sepulcre J, et al. 2011. The organization of the human cerebral cortex estimated by intrinsic functional connectivity. *J Neurophysiol*. 106(3):1125-65.
- Zhou J, Gennatas ED, Kramer JH, Miller BL, Seeley WW. 2012. Predicting regional neurodegeneration from the healthy brain functional connectome. *Neuron*. 73(6):1216-27.