

# Atrial Fibrillation Genetic Risk Differentiates Cardioembolic Stroke from other Stroke Subtypes

Sara L. Pulit, PhD<sup>1,2,3</sup>; Lu-Chen Weng, PhD<sup>3,4</sup>; Patrick F McArdle, PhD<sup>5</sup>; Ludovic Trinquart, PhD<sup>6,7</sup>; Seung Hoan Choi, PhD<sup>3</sup>; Braxton D. Mitchell, PhD<sup>5,8</sup>; Jonathan Rosand, MD<sup>3,9,10</sup>; Paul I W de Bakker, PhD<sup>1,11</sup>; Emelia J Benjamin, MD, ScM<sup>6,12,13</sup>; Patrick T Ellinor, MD, PhD<sup>3,4,14</sup>; Steven J Kittner, MD<sup>15,16</sup>; Steven A Lubitz, MD, MPH<sup>\*3,4,14</sup>; Christopher D Anderson, MD<sup>\*3,9,10</sup>, on behalf of the Atrial Fibrillation Genetics Consortium and the International Stroke Genetics Consortium.

1. Department of Genetics, University Medical Center Utrecht, Utrecht University, Utrecht, The Netherlands
2. Li Ka Shing Centre for Health Information and Discovery, The Big Data Institute, University of Oxford, Oxford, UK
3. Program in Medical and Population Genetics, Broad Institute, Cambridge, MA, USA
4. Cardiovascular Research Center, Massachusetts General Hospital, Boston, MA, USA
5. Department of Medicine, Program for Personalized and Genomic Medicine, University of Maryland School of Medicine, Baltimore, Maryland, United States of America
6. National Heart, Lung, and Blood Institute's and Boston University's Framingham Heart Study, Framingham, MA, USA
7. Department of Biostatistics, Boston University School of Public Health, Boston, MA
8. Geriatrics Research and Education Clinical Center, Baltimore Veterans Administration Medical Center, Baltimore, MD, USA
9. Center for Genomic Medicine, Massachusetts General Hospital, Boston, MA, USA
10. J.P. Kistler Stroke Research Center, Massachusetts General Hospital, Boston, MA, USA
11. Computational Genomics, Vertex Pharmaceuticals, Boston, MA, USA (current address)
12. Cardiology Preventive Medicine Sections, Evans Department of Medicine, Boston University School of Medicine, Boston, MA, USA
13. Department of Epidemiology, Boston University School of Public Health, Boston, MA, USA
14. Cardiac Arrhythmia Service, Massachusetts General Hospital, Boston, MA, USA
15. Department of Neurology, University of Maryland School of Medicine, Baltimore, MD, USA
16. Department of Neurology, Veterans Affairs Medical Center, Baltimore, MD, USA

\* These authors contributed equally to supervision of this study

---

Supplemental data: Figures e1-7, Tables e1-8, and Supplementary Methods

Title: 95 characters  
 Paper: 3,411 words  
 Abstract: 224 words  
 Figures: 2  
 Tables: 1  
 References: 39

1 Publication history: This manuscript was previously published in bioRxiv:

2 <https://doi.org/10.1101/239269>

3 Corresponding authors

4  
5 Dr. Steven A. Lubitz

6 Cardiovascular Research Center and Cardiac Arrhythmia Service

7 Massachusetts General Hospital

8 55 Fruit Street

9 GRB 109

10 Boston, MA, 02114, USA

11 [slubitz@mgh.harvard.edu](mailto:slubitz@mgh.harvard.edu)

12  
13 Dr. Christopher D. Anderson

14 Center for Genomic Medicine

15 Massachusetts General Hospital

16 185 Cambridge Street, CPZN-6818

17 Boston, MA, 02114, USA

18 [cdanderson@mgh.harvard.edu](mailto:cdanderson@mgh.harvard.edu)

19

20

21

# Author Contributions

All named authors have contributed meaningfully to the present study. Specific contributions for each author are described below.

**S.L. Pulit:** conception of research design, data analysis, drafting of manuscript, critical revision of manuscript

**L.C. Weng:** data analysis, critical revision of manuscript

**P.F. McArdle:** data acquisition, data analysis, critical revision of manuscript

**L. Trinquart:** data acquisition, critical revision of manuscript

**S.H. Choi:** data acquisition, critical revision of manuscript

**B.D. Mitchell:** data acquisition, study supervision, critical revision of manuscript

**J. Rosand:** data acquisition, study supervision, critical revision of manuscript

**P.I.W. de Bakker:** study supervision, critical revision of manuscript

**E.J. Benjamin:** data acquisition, study supervision, critical revision of manuscript

**P.T. Ellinor:** data acquisition, study supervision, critical revision of manuscript

**S.J. Kittner:** data acquisition, study supervision, critical revision of manuscript

**S.A. Lubitz:** conception of research design, study supervision, drafting of manuscript, critical revision of manuscript

**C.D. Anderson:** conception of research design, study supervision, drafting of manuscript, critical revision of manuscript

# Disclosures/Competing Financial Interests

Dr. Pulit reports no disclosures. Dr. Weng reports no disclosures. Dr. McArdle reports no disclosures. Dr. Trinquart reports no disclosures. Dr. Choi reports no disclosures. Dr. Mitchell reports no disclosures. Dr. Rosand reports no disclosures. Dr. de Bakker reports no disclosures. Dr. Benjamin reports no disclosures. Dr. Ellinor is a principal investigator on a Bayer HealthCare grant to the Broad Institute related to the genetics and development of new therapeutics for cardiovascular diseases. Dr. Kittner reports no disclosures. Dr. Lubitz receives sponsored research support from Boehringer Ingelheim, Bristol Myers Squibb, Bayer HealthCare, Biotronik, and has consulted for St. Jude Medical / Abbott and Quest Diagnostics. Dr. Anderson has consulted for ApoPharma.

# Abstract

*Objective:* We sought to assess whether genetic risk factors for atrial fibrillation can explain cardioembolic stroke risk.

*Methods:* We evaluated genetic correlations between a prior genetic study of AF and AF in the presence of cardioembolic stroke using genome-wide genotypes from the Stroke Genetics Network (N = 3,190 AF cases, 3,000 cardioembolic stroke cases, and 28,026 referents). We tested whether a previously-validated AF polygenic risk score (PRS) associated with cardioembolic and other stroke subtypes after accounting for AF clinical risk factors.

*Results:* We observed strong correlation between previously reported genetic risk for AF, AF in the presence of stroke, and cardioembolic stroke (Pearson's  $r=0.77$  and  $0.76$ , respectively, across SNPs with  $p < 4.4 \times 10^{-4}$  in the prior AF meta-analysis). An AF PRS, adjusted for clinical AF risk factors, was associated with cardioembolic stroke (odds ratio (OR) per standard deviation (sd) =  $1.40$ ,  $p = 1.45 \times 10^{-48}$ ), explaining ~20% of the heritable component of cardioembolic stroke risk. The AF PRS was also associated with stroke of undetermined cause (OR per sd =  $1.07$ ,  $p = 0.004$ ), but no other primary stroke subtypes (all  $p > 0.1$ ).

*Conclusions:* Genetic risk for AF is associated with cardioembolic stroke, independent of clinical risk factors. Studies are warranted to determine whether AF genetic risk can serve as a biomarker for strokes caused by AF.

# Introduction

Atrial fibrillation affects nearly 34 million individuals worldwide<sup>1</sup> and is associated with a five-fold increased risk of ischemic stroke,<sup>2</sup> a leading cause of death and disability.<sup>3,4</sup> Atrial fibrillation promotes blood clot formation in the heart which can embolize distally, and is a leading cause of cardioembolism. Secondary prevention of cardioembolic stroke is directed at identifying atrial fibrillation as a potential cause, and initiating anticoagulation to prevent recurrences. Yet atrial fibrillation can remain occult even after extensive workup owing to the paroxysmal nature and fact that it can be asymptomatic. Since both atrial fibrillation and stroke are heritable, and since there is a compelling clinical need to determine whether stroke survivors have atrial fibrillation as an underlying cause, we sought to determine whether genetic risk of cardioembolic stroke can be approximated by measuring genetic susceptibility to atrial fibrillation.

Recent genome-wide association studies (GWAS) have demonstrated that both atrial fibrillation<sup>5</sup> and ischemic stroke<sup>6,7</sup> are complex disorders with polygenic architectures. The top loci for cardioembolic stroke, on chromosome 4q25 upstream of *PITX2* and on 16q22 near *ZFHX3*, are both leading risk loci for atrial fibrillation.<sup>8-10</sup> Despite overlap in top risk loci, the genetic susceptibility to both atrial fibrillation and cardioembolic stroke is likely to involve the aggregate contributions of hundreds or thousands of loci, consistent with other polygenic conditions.<sup>11</sup>

To understand whether genetic risk for atrial fibrillation is an important and potentially useful determinant of overall cardioembolic stroke risk, we analyzed 13,390 ischemic stroke cases and 28,026 referents from the NINDS-Stroke Genetics Network (SiGN)<sup>12</sup> with genome-wide genotyping data. First, we assessed whether stroke patients with atrial fibrillation have a genetic predisposition to the arrhythmia, leveraging additional GWAS data from the Atrial Fibrillation Genetics Consortium (AFGen). Second, we compared genetic risk factors for atrial fibrillation and stroke to ascertain the extent to which heritable risk of cardioembolic stroke is explained by genetic risk factors for atrial fibrillation.

# Methods

## *The Stroke Genetics Network (SiGN)*

The Stroke Genetics Network (SiGN) was established with the aim of performing the largest genome-wide association study (GWAS) of ischemic stroke to date. The study design has been described previously<sup>12</sup> and is summarized in the **Supplementary Methods**. Briefly, subjects in SiGN were classified into stroke subtypes using the Causative Classification System (CCS), which subtypes cases through an automated, web-based system that accounts for clinical data, test results, and imaging information.<sup>13,14</sup> Within CCS, there are two sub-categories: CCS causative, which does not allow for competing subtypes in a single sample; and CCS phenotypic, which does. Additionally, ~74% of samples were subtyped using the TOAST subtyping system.<sup>15</sup> After quality control (QC), the SiGN dataset comprised 16,851 ischemic stroke cases and 32,473 stroke-free controls (**Supplementary Methods** and **Supplementary Table 1**). Here, we analyze only the European- and African-ancestry samples (13,390 cases and 28,026 controls).

## *Standard Protocol Approvals, Registrations, and Patient Consents*

All cohorts included in the SiGN dataset received approval from the cohort-specific ethical standards committee. Cohorts received written informed consent from all patients or guardians of patients participating in the study, where applicable. Details on sample collection have been described previously.<sup>12</sup>

## *Identifying atrial fibrillation cases and controls*

We defined atrial fibrillation in SiGN on the basis of five variables available in the CCS phenotyping system: (i) atrial fibrillation, (ii) paroxysmal atrial fibrillation, (iii) atrial flutter, (iv) sick sinus syndrome, and (v) atrial thrombus. This definition yielded 3,190 atrial fibrillation cases for analysis. We also defined a strict case set based on "atrial

fibrillation" only (N = 1,751 cases) for sensitivity analyses (**Supplementary Methods and Supplementary Figure 1**).

From the 28,026 controls, we established a set of 3,861 control individuals in whom atrial fibrillation was indicated as not present. For the remaining subjects, we assumed that individuals did not have atrial fibrillation since atrial fibrillation status for most control samples in SiGN is unknown.

### *Genome-wide association testing of ischemic stroke subtypes and atrial fibrillation in SiGN*

We merged genotype dosages together and kept SNPs with imputation quality > 0.8 and minor allele frequency (MAF) > 1% (**Supplementary Methods**). We performed association testing using a linear mixed model implemented in BOLT-LMM.<sup>16</sup> We adjusted the model for the top ten principal components (PCs) and sex, in addition to the genetic relationship matrix (GRM; **Supplementary Methods**).<sup>16</sup> We performed GWAS in atrial fibrillation and each of the stroke subtypes available in SiGN. Results were unadjusted for age, as adjusting for age in the atrial fibrillation GWAS gave results highly concordant with the age-unadjusted results (**Supplementary Results**).

### *Heritability calculations*

We calculated additive SNP-based heritability estimates for ischemic stroke, stroke subtypes, and atrial fibrillation using restricted maximum likelihood implemented in BOLT-REML (**Supplementary Methods**).<sup>16</sup>

### *Genetic correlation between atrial fibrillation and ischemic stroke subtypes*

We used summary-level data from a prior Atrial Fibrillation Genetics (AFGen) Consortium meta-analysis of atrial fibrillation<sup>5</sup> to calculate a z-score for each SNP in that GWAS. Additionally, we calculated a z-score for each SNP from our SiGN GWAS

of each stroke subtype and atrial fibrillation. As a null comparator, we downloaded SNP z-scores from a GWAS of educational attainment<sup>17</sup> available through LDHub (<http://ldsc.broadinstitute.org/>, accessed 11-1-2017). We calculated Pearson's  $r$  between z-scores from two traits to evaluate correlation (**Supplementary Methods** and **Supplementary Figure 3**).

### *Constructing an atrial fibrillation polygenic risk score*

To construct an atrial fibrillation polygenic risk score (PRS), we used SNPs from a previously-derived atrial fibrillation PRS (**Supplementary Methods**).<sup>18</sup> Briefly, the PRS was derived from an atrial fibrillation GWAS of 17,931 cases and 115,142 controls.<sup>5</sup> This PRS comprised 1,168 SNPs with  $p < 1 \times 10^{-4}$  and LD pruned at an  $r^2$  threshold of 0.5.<sup>18</sup> Of these 1,168 SNPs, we identified 934 SNPs in the SiGN dataset with imputation info  $> 0.8$  and MAF  $> 1\%$ . We used these 934 SNPs to construct the atrial fibrillation PRS in the SiGN dataset. Additional details on the PRS construction can be found in the **Supplementary Methods**.

### *Testing an atrial fibrillation polygenic risk score in ischemic stroke subtypes*

We tested for association between the atrial fibrillation PRS and stroke subtypes using logistic regression (**Supplementary Methods**). We included sex and the top 10 PCs as additional covariates. We optionally adjusted the association tests for age, diabetes mellitus, cardiovascular disease, smoking status (current smoker, former smoker, or never smoked), and hypertension.

We calculated the variance explained by the atrial fibrillation PRS in cardioembolic stroke by constructing a model in BOLT-REML that consisted of: (1) a variance component made up of SNPs for the GRM, and (2) a variance component made up of SNPs from the PRS (**Supplementary Methods**).

### *Data availability*



1 Code, supporting data, and downloadable supplemental tables are available here:  
2 <https://github.com/UMCUGenetics/Afib-Stroke-Overlap>. The **Supplementary**  
3 **Information** contains additional information regarding data access, methods, and  
4 links to summary-level data.

5

6

# Results

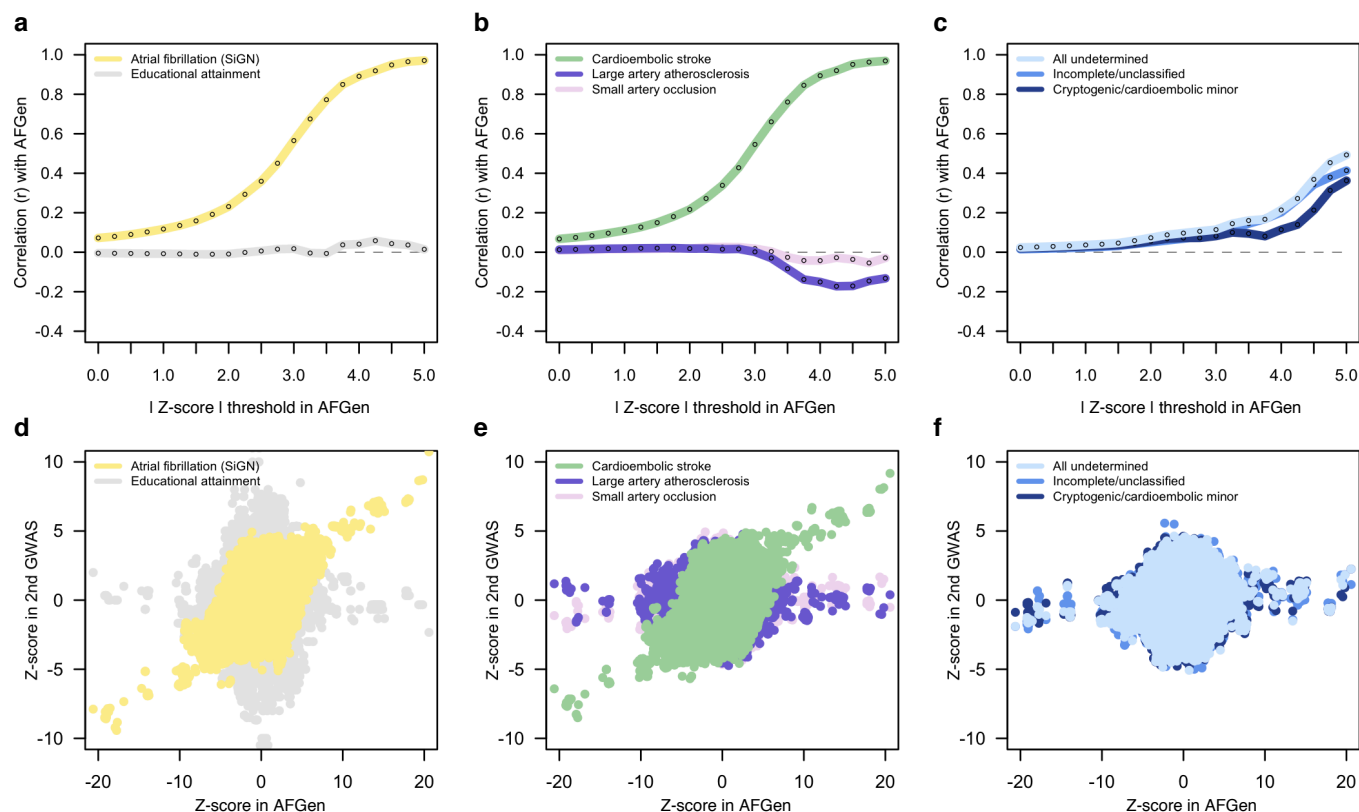
We began by testing our ability to rediscover known atrial fibrillation genetic associations in the SiGN dataset, assembled to study the genetics of ischemic stroke. We ran a genome-wide association study (GWAS) in SiGN using 3,190 cases with atrial fibrillation or paroxysmal atrial fibrillation, as well as other diagnoses suggestive of underlying atrial fibrillation<sup>19,20</sup> (**Methods, Table 1** and **Supplementary Table 1**) and 28,026 controls (**Supplementary Figure 1**). We found the top-associated SNPs to be highly concordant with a prior GWAS of atrial fibrillation performed by the Atrial Fibrillation Genetics (AFGen) Consortium (**Supplementary Table 2**). Adjusting the GWAS for age did not substantially change our findings ( $r = 0.83$  between SNP effects from the age-unadjusted and age-adjusted GWAS).

Extending our analysis beyond these top associations, we next assessed whether stroke patients with atrial fibrillation have a similar overall genetic predisposition to the arrhythmia as seen in the independent AFGen GWAS. Additionally, we assessed the overlap between genetic predisposition to atrial fibrillation and each stroke subtype, allowing for the known phenotypic concordance between cardioembolic stroke and atrial fibrillation (89.5% of cardioembolic stroke cases in SiGN also have atrial fibrillation, **Supplementary Table 1**). We performed a series of GWAS in the SiGN data for atrial fibrillation and each of the stroke subtypes using BOLT-LMM<sup>16</sup> (**Methods**), and calculated the z-score (beta/standard error) of each SNP in each phenotype. We then used summary-level results available from the prior (independent) GWAS of atrial fibrillation<sup>5</sup> (from AFGen) and calculated the z-score for each SNP in that dataset.

Measuring Pearson's correlation ( $r$ ) between AFGen z-scores and z-scores from the atrial fibrillation GWAS in SiGN, we found only a modest correlation ( $r = 0.07$  across  $\sim 7.8$ M SNPs, **Figure 1**). However, when we iteratively subsetted the AFGen GWAS results by the (absolute values of) z-scores of the SNPs, we found that correlation with the atrial fibrillation GWAS in SiGN increased as the z-score threshold became more stringent. For example, for those  $\sim 4.5$ M SNPs with  $|z| > 1$  in AFGen, correlation

with atrial fibrillation SNPs in SiGN was 0.12; for those  $\sim 1.9$ M SNPs with  $|z| > 3.5$  in AFGen, correlation with the SiGN atrial fibrillation GWAS rose to 0.77 (**Figure 1** and **Supplementary Table 3**). These correlations, calculated to include even modestly-associated SNPs, indicate that atrial fibrillation in AFGen and atrial fibrillation in stroke (SiGN) share a large proportion of genetic risk factors. Removing  $\pm 2$ Mb around the *PITX2* and *ZFHX3* loci only modestly impacted the correlation between AFGen and atrial fibrillation in SiGN ( $r = 0.63$  for SNPs with  $|z| > 3.5$ ; **Supplementary Figure 2** and **Supplementary Table 3**). Correlations between AFGen and cardioembolic stroke in SiGN were unsurprisingly highly similar to that of the results with atrial fibrillation in SiGN ( $r = 0.77$  for AFGen SNPs with  $|z| > 3.5$ ), likely due to the high concordance between the atrial fibrillation and cardioembolic stroke phenotypes (**Figure 1** and **Supplementary Figure 3**).

**Figure 1 | Genetic correlation between atrial fibrillation in the Atrial Fibrillation Genetics (AFGen) Consortium meta-analysis and atrial fibrillation and ischemic stroke subtypes analysed in SiGN.** Pearson's  $r$  correlation between SNP z-scores in the AFGen GWAS of atrial fibrillation and in GWAS of selected traits performed in the SiGN data. (a) GWAS of atrial fibrillation in AFGen and in SiGN correlate with increasing strength as SNP z-scores in AFGen increase. Correlation with educational attainment (performed separately, shown here as a null comparator) remains approximately zero across all z-score thresholds. (b) SNP effects in AFGen also correlate strongly with cardioembolic stroke in SiGN, but not with the other primary stroke subtypes. (c) Undetermined subtypes of stroke also show modest correlation to the genetic architecture of atrial fibrillation in AFGen. Panels d-f show genome-wide z-score distributions underlying correlations.



Continuing this analysis across the other stroke subtypes (large artery atherosclerosis, small artery occlusion, and undetermined stroke; **Figure 1**), we found near-zero correlation between AFGen and either large artery atherosclerosis or small artery occlusion (**Figure 1**) indicating no genetic overlap between the phenotypes. However, the correlation between atrial fibrillation and the undetermined stroke subtypes (a highly heterogeneous subset of cases<sup>21,22</sup> that cannot be classified with standard subtyping systems<sup>13,15</sup>) increased steadily as we partitioned the AFGen data by z-score (all undetermined vs. AFGen  $r = 0.04$  for AFGen SNPs with  $|z| > 1$  and  $r = 0.16$  for AFGen SNPs with  $|z| > 3.5$ ; **Figure 1** and **Supplementary Table 3**), indicating that genome-wide, there is residual genetic correlation between atrial fibrillation and the undetermined stroke categories, some of which could represent causal atrial fibrillation stroke mechanisms in that subgroup. As an additional null comparator, we performed correlations between the AFGen results with z-scores derived from the latest GWAS of educational attainment<sup>17</sup> and found that correlation remained at approximately zero regardless of the z-score threshold used (**Figure 1** and **Supplementary Table 3**).

To further understand the overlap between genetic risk factors for atrial fibrillation and cardioembolic stroke and to evaluate the degree to which cardioembolic stroke is comprised of risk factors beyond those for atrial fibrillation, we performed a restricted maximum likelihood analysis implemented in BOLT-REML<sup>16</sup> to estimate SNP-based heritability of atrial fibrillation and cardioembolic stroke. Using phenotypes derived from the CCS subtyping algorithm<sup>23</sup> (**Methods**), we estimated heritability of atrial fibrillation and cardioembolic stroke at 20.0% and 19.5%, respectively. These estimates are consistent with previous estimates in larger samples (**Supplementary Figure 4**),<sup>24,25</sup> and the similar heritabilities suggest that cardioembolic stroke does not have a substantial heritable component beyond the primary atrial fibrillation risk factor. For comparison, we calculated heritability in the other stroke subtypes<sup>15</sup> and found estimates to be similarly modest (range: 15.5% - 23.0%; **Supplementary Figures 4-6** and **Supplementary Table 4**).

Up to this point, our results indicated that atrial fibrillation in ischemic stroke is genetically similar to that discovered in prior genetic studies of atrial fibrillation alone, and that the bulk of the genetic risk for cardioembolic stroke appears attributable to atrial fibrillation genetic risk factors. Next, we sought to explicitly test what proportion of cardioembolic stroke risk could be explained by atrial fibrillation loci, independent of known clinical risk factors for atrial fibrillation. First, we identified SNPs from an atrial fibrillation polygenic risk score (PRS) independently derived from the AFGen GWAS<sup>5</sup> (**Methods**). Of the 1,168 SNPs used to generate this pre-established PRS, we identified 934 in the SiGN dataset with imputation quality > 0.8 and minor allele frequency >1%. We computed the PRS per individual (**Methods**), weighting the imputed dosage of each risk allele by the effect of the SNP (i.e., the beta coefficient) as reported in AFGen<sup>5</sup>.

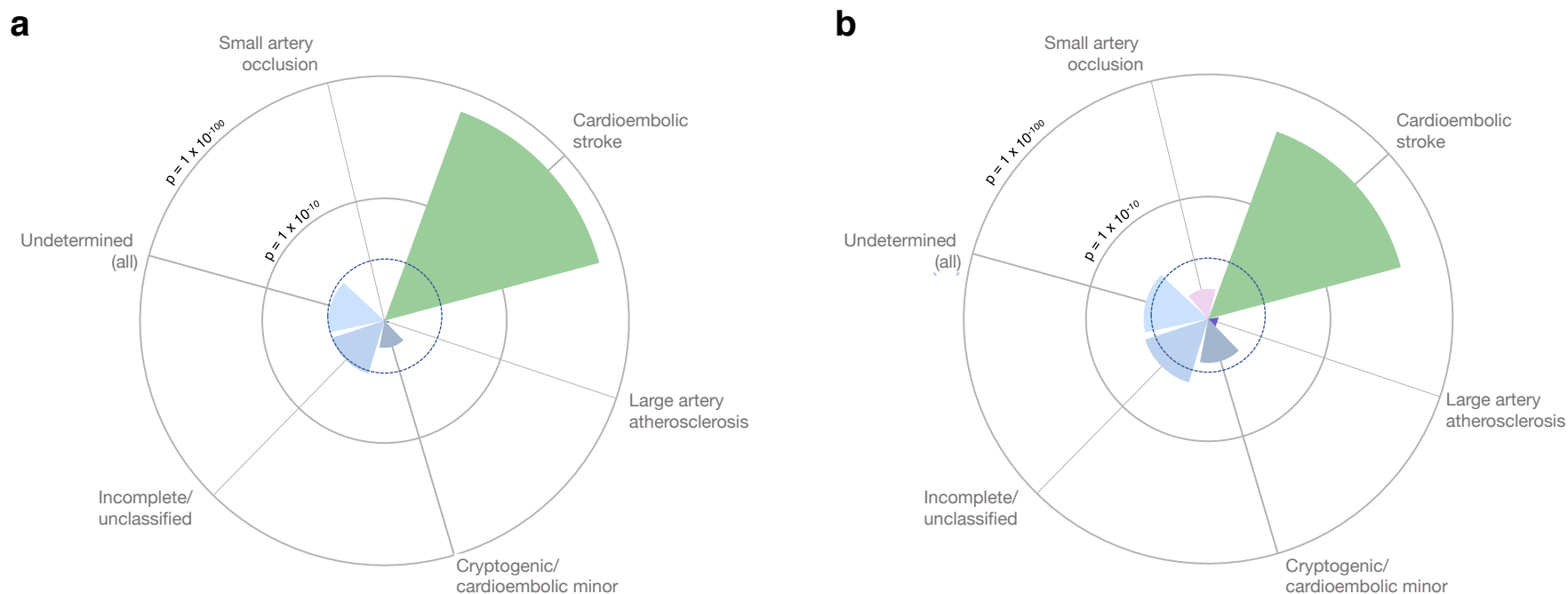
We tested the association of the atrial fibrillation PRS with cardioembolic stroke, using a logistic regression and adjusting for the top ten principal components and sex (**Methods**). As expected from our earlier results, we found the PRS to be strongly associated with cardioembolic stroke (odds ratio (OR) per 1 standard deviation (sd) of the PRS = 1.93 [95% confidence interval (CI): 1.34 - 1.44],  $p = 1.01 \times 10^{-65}$ ; **Figure 2** and **Supplementary Table 5**), confirming the high genetic concordance of these phenotypes across SNPs which, individually, confer only a modest average association with atrial fibrillation. Next, we adjusted the association model for clinical covariates associated with atrial fibrillation including age, diabetes mellitus, cardiovascular disease, smoking, and hypertension.<sup>26</sup> Using a (smaller) set of cases and controls with complete clinical risk factor information, we found that inclusion of these clinical risk factors in the model only modestly reduced the PRS signal in cardioembolic stroke (OR per 1 sd = 1.40 [95% CI: 1.34 - 1.47],  $p = 1.45 \times 10^{-48}$ ; **Supplementary Tables 5-7**). These results indicate a strong relationship between atrial fibrillation genetic risk factors and cardioembolic stroke risk, independent of the clinical factors that associate with atrial fibrillation. Expanding the set of SNPs used to construct the PRS to the original 934 SNPs  $\pm 25\text{kb}$ ,  $\pm 50\text{kb}$ , and  $\pm 100\text{kb}$  (**Methods**) revealed a persistently strong, though somewhat attenuated, association between the PRS and cardioembolic stroke (PRS including SNPs within 100kb,  $p = 4.47 \times 10^{-}$

<sup>44</sup>, **Supplementary Table 6**). None of the other stroke subtypes were significantly associated with the atrial fibrillation PRS (all  $p > 0.013$ , **Figure 2** and **Supplementary Figure 6**).

Because atrial fibrillation status was missing for most controls in the SiGN dataset, we performed sensitivity analyses using only the 3,861 controls confirmed as having no atrial fibrillation. While reducing the set of controls to this refined group did not substantially change results for the primary stroke subtypes, we found the atrial fibrillation PRS was modestly associated ( $p < 5 \times 10^{-3}$ , after adjusting for five subtypes and two control groups) with the overall undetermined subtype (OR per 1 sd = 1.07 [95% CI: 1.02 - 1.13],  $p = 4.15 \times 10^{-3}$ ) (**Figure 2** and **Supplementary Table 5**). Further examination of the two mutually exclusive subgroups of the undetermined group revealed that the PRS associated significantly with the incomplete/unclassified categorization (OR per 1 sd = 1.09 [95% CI: 1.03 - 1.16],  $p = 3.17 \times 10^{-3}$ ) (**Figure 2**) but not with cryptogenic/cardioembolic minor (OR per 1 sd = 1.06 [95% CI: 1.00 - 1.13],  $p = 5.10 \times 10^{-2}$ ). Correcting for clinical covariates only modestly changed the signal in the incomplete/unclassified phenotype ( $p = 9.7 \times 10^{-3}$ , **Figure 2**), supporting the robustness of the observed association, independent of clinical risk factors.

Lastly, we created a model in BOLT-LMM, fitting two genetic variance components: one component including SNPs for the genetic relationship matrix, and the second component including the original PRS SNPs from the atrial fibrillation PRS (including  $\pm 100\text{kb}$  around these SNPs, to include a sufficient number of markers to estimate variance explained). We found that the SNPs from the atrial fibrillation PRS explained 4.1% of the total (20.0%) heritability in atrial fibrillation. In evaluating variance explained in cardioembolic stroke, we found a nearly identical result: the component representing the atrial fibrillation risk score explained 4.5% (s.e. = 1.00%) of the total 19.5% genetic heritability in cardioembolic stroke. Thus, atrial fibrillation genetic risk accounts for 23.1%, or approximately one-fifth, of the total heritability of cardioembolic stroke.

**Figure 2 | Association of atrial fibrillation polygenic risk score in ischemic stroke subtypes.** We constructed an independent polygenic risk score (PRS) from atrial fibrillation-associated SNPs identified in the AFGen GWAS, and tested associations between this PRS and ischemic stroke subtypes using (a) all available referents (N = 28,026) and (b) referents without atrial fibrillation (N = 3,861). The PRS strongly associated with cardioembolic stroke in both sets of samples. In the atrial fibrillation-free set of controls (panel b) we observed association of the PRS ( $p < 5 \times 10^{-3}$ , after adjusting for five subtypes and two sets of referents; indicated by the dashed dark blue line) with incomplete/unclassified stroke as well.





## Discussion

Our results suggest that individuals with cardioembolic strokes have an enrichment for atrial fibrillation genetic risk, despite the fact that cardioembolic stroke often affects older adults with multiple clinical comorbidities<sup>27</sup> that could increase risk for atrial fibrillation due to non-genetic factors. The fact that cardioembolic stroke and atrial fibrillation share a highly-similar genetic architecture extends our understanding of the morbid consequences of heritable forms of the arrhythmia. Furthermore, the observation that atrial fibrillation genetic risk was only associated with cardioembolic stroke, and (consistently) lacked association in large artery atherosclerosis or small artery occlusion,<sup>28</sup> raises the possibility that atrial fibrillation genetic risk may be informative in the management of ischemic stroke survivors in whom the mechanism may be unclear.

The use of polygenic risk scores for complex traits has proved an efficient means of understanding how genetic predisposition to diseases can overlap. Given the onslaught of genotyping data available for common diseases, PRS's can now be used to stratify patients by risk (e.g., in breast cancer<sup>29,30</sup>) or predict outcome (e.g., in neuropsychiatric disease<sup>29</sup>). More recently, PRS's have been used to identify individuals in the general population with a four-fold risk for coronary disease,<sup>31</sup> proposed for inclusion in clinical workups of individuals with early-onset coronary artery disease,<sup>32</sup> and used to identify patients for whom lifestyle changes or statin intervention would be beneficial.<sup>33,34</sup> While previous work has also shown an association between an atrial fibrillation PRS and cardioembolic stroke,<sup>28</sup> we have extended this work to formally quantify the extent to which an atrial fibrillation PRS captures genetic risk for cardioembolic stroke. These findings lay the groundwork for future work that can potentially leverage this overlap to develop atrial fibrillation PRS's that could be used to predict individuals at highest risk of cardioembolic stroke (to improve diagnostic resource allocation) or help distinguish between clinical subtypes of stroke.

1 Though our analysis was aimed at understanding the genetic overlap between  
2 cardioembolic stroke and atrial fibrillation, we additionally observed genetic  
3 correlation between atrial fibrillation and undetermined stroke, a finding not observed  
4 in a previous investigation of atrial fibrillation PRS in ischemic stroke subtypes, albeit  
5 in a smaller sample.<sup>28</sup> Perhaps contrary to expectation, we specifically found the atrial  
6 fibrillation polygenic risk score to be more strongly associated with the subset of  
7 etiology-undetermined strokes with an incomplete clinical evaluation, as opposed to  
8 those with cryptogenic stroke of a presumed, but not demonstrated, embolic source.  
9 These associations could be due to physician biases in diagnostic workups, rather  
10 than supporting a low prevalence of occult atrial fibrillation in presumed embolic  
11 strokes of undetermined source. Identifying stroke patients with atrial fibrillation is  
12 an important clinical challenge, as occult atrial fibrillation is well-known to cause  
13 strokes,<sup>35,36</sup> and since such patients are at high risk for recurrent stroke, which is  
14 preventable with anticoagulation.<sup>37,38</sup> Together, our findings indicate that atrial  
15 fibrillation genetic risk may augment clinical algorithms to determine stroke etiology,  
16 but will require further study.

17  
18 The work presented here benefits from a number of improvements, including  
19 increased sample size; analysis of samples from a multicenter consortium, potentially  
20 enhancing the generalizability of the findings; and use of the CCS subtyping system,  
21 which provides more nuanced phenotyping, particularly in the cryptogenic subtype.  
22 Nevertheless, some limitations remain. Stroke is a heterogeneous condition that  
23 occurs later in life and has high lifetime prevalence (>15%<sup>39</sup>), features that can  
24 reduce statistical power. Further, sample sizes have lagged behind other GWAS  
25 efforts, a challenge further compounded by subtyping (nearly one-third of all cases  
26 are categorized as undetermined<sup>23</sup>). Reduced sample sizes impact power for  
27 discovery and make other analytic approaches – such as standard approaches for  
28 measuring trait correlation<sup>16</sup> – unfeasible. Also, our sample is primarily comprised of  
29 European-ancestry samples, and work in non-Europeans, particularly in African-  
30 ancestry samples where risk of stroke is double that of European samples, is crucial.  
31 Finally, the current analysis does not analyze rare variation, which also likely  
32 contributes to disease susceptibility.<sup>5</sup>

1  
2 We have shown that the cumulative genetic risk for atrial fibrillation in individuals  
3 with a stroke is similar to that reported in a larger population-based cohort.<sup>25</sup>  
4 Genome-wide variation related to atrial fibrillation is substantially associated with  
5 cardioembolic stroke risk. Moreover, atrial fibrillation genetic risk was specific for  
6 cardioembolic stroke, and was not associated with the other primary stroke subtypes.  
7 The observation that atrial fibrillation genetic risk associated with strokes of  
8 undetermined cause supports the notion that undetected atrial fibrillation underlies  
9 a proportion of stroke risk in these individuals. Further work will need to incorporate  
10 emerging discoveries of rare genetic variants in atrial fibrillation, and explore the  
11 potential for genetic risk tools, including PRS's performed via clinical-grade  
12 genotyping, to assist in the diagnostic workup of individuals with ischemic stroke.  
13

# Tables

**Table 1 | Atrial fibrillation and stroke cases in SiGN.** Of the 13,390 stroke cases available in the SiGN dataset, a total of 3,190 cases had atrial fibrillation or other suggestive diagnoses. While the majority of these cases were subtyped as having a cardioembolic stroke, a fraction was distributed among the other stroke subtypes. Samples can appear more than once per row (i.e., have more than one atrial fibrillation diagnosis), but totals represent the number of unique atrial fibrillation samples in each stroke subtype. There are no subjects with atrial fibrillation or equivalent subtyped as “cryptogenic/cardioembolic minor” because such a diagnosis would remove them from this category.

	Phenotype	Total	Ischemic stroke subtype				
			Primary subtypes			Undetermined subtypes	
			Cardioembolic	Large artery atherosclerosis	Small artery occlusion	Incomplete/unclassified	Cryptogenic/cardioembolic minor
	Atrial fibrillation	1,751	1,495	63	32	151	0
	Paroxysmal atrial fibrillation	1,315	1,088	52	23	138	0
	Left atrial thrombus	48	37	3	3	4	0
	Sick sinus syndrome	79	65	5	3	4	0
	Atrial Flutter	106	90	4	2	10	0
	Total atrial fibrillation cases	3,190	2,684	123	61	298	0
	No atrial fibrillation	--	316	2,262	2,201	1,982	2,294

# Acknowledgements

This work uses data from the National Institute of Neurological Disorders and Stroke - Stroke Genetics Network (NINDS-SiGN) Consortium and the Atrial Fibrillation Genetics (AFGen) Consortium. Members of NINDS-SiGN, the International Stroke Genetics Consortium, and AFGen are provided as an appendix to this paper.

Drs. Pulit, Mitchell, McArdle, and Kittner are supported by NIH grant R01NS100178. The NINDS-SiGN Consortium is supported by the NIH grants R01NS100178 and U01NS069208.

Dr. Pulit is supported by Veni Fellowship 016.186.071 (ZonMW) from the Dutch Organization for Scientific Research (Nederlandse Organisatie voor Wetenschappelijk Onderzoek, NWO).

Dr. Anderson is supported in part by K23NS086873, R01NS103924, an American Heart Association Strategically Focused Research Network in Atrial Fibrillation Award, and a Massachusetts General Hospital Center for Genomic Medicine Catalyst Award.

Dr. Lubitz is supported by NIH grants K23HL114724, an American Heart Association Strategically Focused Research Network in Atrial Fibrillation Award, and a Doris Duke Charitable Foundation Clinical Scientist Development Award 2014105.

Dr. Weng is supported by an American Heart Association Postdoctoral Fellowship Award 17POST33660226.

Drs. Ellinor and Benjamin are supported by the NIH grants R01HL092577 and R01HL128914, and an American Heart Association Strategically Focused Research Network in Atrial Fibrillation Award. Dr. Benjamin is additionally supported by the NIH grants 1RC1HL101056 and 1R01HL102214. Dr. Ellinor is additionally supported by the NIH grants R01HL104156 and K24HL105780; the National Heart, Lung, and Blood Institute (NHLBI); American Heart Association Established Investigator Award 13EIA14220013; and the Fondation Leducq 14CVD01.

# References

1. Chugh SS, Havmoeller R, Narayanan K, et al. Worldwide epidemiology of atrial fibrillation: a Global Burden of Disease 2010 Study. *Circulation*. 2014;129:837–847.
2. Wolf PA, Abbott RD, Kannel WB. Atrial fibrillation as an independent risk factor for stroke: the Framingham Study. *Stroke*. 1991;22:983–988.
3. World Health Organization. WHO | The top 10 causes of death [online]. World Health Organization; 2014. Accessed at: <http://www.who.int/mediacentre/factsheets/fs310/en/>.
4. Feigin VL, Lawes CM, Bennett D a., Barker-Collo SL, Parag V. Worldwide stroke incidence and early case fatality reported in 56 population-based studies: a systematic review. *Lancet Neurol*. Elsevier Ltd; 2009;8:355–369.
5. Christophersen IE, Rienstra M, Roselli C, et al. Large-scale analyses of common and rare variants identify 12 new loci associated with atrial fibrillation. *Nat Genet*. 2017;57:289.
6. Bevan S, Traylor M, Adib-Samii P, et al. Genetic heritability of ischemic stroke and the contribution of previously reported candidate gene and genome-wide associations. *Stroke*. 2012;43:3161–3167.
7. Lubitz SA, Ozcan C, Magnani JW, Käåb S, Benjamin EJ, Ellinor PT. Genetics of atrial fibrillation: implications for future research directions and personalized medicine. *Circ Arrhythm Electrophysiol*. 2010;3:291–299.
8. Gudbjartsson DF, Arnar DO, Helgadottir A, et al. Variants conferring risk of atrial fibrillation on chromosome 4q25. *Nature*. 2007;448:353–357.
9. Gretarsdottir S, Thorleifsson G, Manolescu A, et al. Risk variants for atrial fibrillation on chromosome 4q25 associate with ischemic stroke. *Ann Neurol*. 2008;64:402–409.
10. Gudbjartsson DF, Holm H, Gretarsdottir S, et al. A sequence variant in ZFX3 on 16q22 associates with atrial fibrillation and ischemic stroke. *Nat Genet*. 2009;41:876–878.
11. Visscher PM, Wray NR, Zhang Q, et al. 10 Years of GWAS Discovery: Biology, Function, and Translation. *Am J Hum Genet*. 2017;101:5–22.
12. Pulit SL, McArdle PF, Wong Q, Malik R, Gwinn K, Achterberg S, Algra A, Amouyel P, Anderson CD, Arnett DK, Arsava EM, Attia J, Ay H, Bartz TM, Battey T, Benavente OR, Bevan S, Biffi A, Bis JC, Blanton SH, Boncoraglio GB, Brown Jr RD, Burgess AI, Carrera, Smith SNC, Chasman DI, Chauhan G, Chen WM, Cheng YC, Chong M, Cloonan LK, Cole JW, Cotlarciuc I, Cruchaga C, Cuadrado-

Godia E, Dave T, Dawson J, Debette S, Delavaran H, Dell CA, Dichgans M, Doheny KF, Dong C, Duggan DJ, Engström G, Evans MK, Pallegà XE, Faul JD, Fernández-Cadenas I, Fornage M, Frossard PM, Furie K, Gamble DM, Gieger C, Giese AK, Giralte-Steinhauer E, González HM, Goris A, Gretarsdottir S, Grewal RP, Grittner R, Gustafsson S, Han B, Hankey GJ, Heitsch L, Higgins P, Hochberg MC, Holliday E, Hopewell EC, Horenstein RB, Howard G, Ikram MA, Ilcin A, Ingelsson E, Irvin MR, Jackson RD, Jern C, Conde JJ, Johnson JA, Jood K, Kahn MS, Kaplan R, Kappelle LJ, Kardia SLR, Keene KL, Kissela BM, O Kleindorfer D, Koblar S, Labovitz D, Launer LJ, Laurie CC, Laurie CA, Lee CH, Lee JM, Lehm M, Lemmens R, Levi C, Leys D, Lindgren A, Longstreth Jr WT, Maguire J, Manichaikul Ani, Markus HS, McClure LA, McDonough CW, Meisinger C, Melander O, Meschia JF, Mola-Caminal M, Montaner J, Mosley TH, Müller-Nurasyid M, Nalls MA, O'Connell JR, O'Donnell M, Ois A, Papanicolaou GJ, Paré G, Peddareddygar LR, Pedersén A, Pera J, Peters A, Poole D, Psaty BM, Rabionet R, Raffeld MR, Rannikmäe K, Rasheed A, Redfors P, Reiner AP, Rexrode K, Ribasés M, Rich SS, Robberecht W, Rodriguez-Campello A, Rolfs A, Roquer J, Rose LM, Rosenbaum D, Rost NS, Rothwell PM, Rundek T, Ryan KA, Sacco RL, Sale MM, Saleheen D, Salomaa V, Sánchez-Mora C, Schmidt CO, Schmidt H, Schmidt R, Schürks M, Scott R, Segal HC, Seiler S, Seshadri S, Sharma P, Shuldiner AR, Silver B, Slowik A, Smith JA, Söderholm M, Soriano C, Sparks MJ, Stanne T, Stefansson K, Stine OC, Strauch K, Sturm J, Sudlow CLM, Tajuddin SM, Talbert RL, Tatlisumak T, Thijs V, Thorleifsson G, Thorsteindottir U, Tiedt S, Traylor M, Trompet S, Valant V, Waldenberger M, Walters M, Wang L, Wassertheil-Smoller S, Weir DR, Wiggins KL, Williams SR, Wloch-Kopce D, Woo D, Woodfield D, Wu O, Xu H, Zonderman AB, Australian Stroke Genetics Consortium, Cervical Artery Dissection and Ischemic Stroke Patients (CADISP) study, Cohorts of Heart and Aging Research in Genomic Epidemiology (CHARGE) consortium, Consortium of Minority Population genome-wide Association Studies of Stroke (COMPASS), METASTROKE consortium, Wellcome Trust Case-Control Consortium, Worrall BB, de Bakker PIW, Kittner SJ, Mitchell BD, Rosand J. Loci associated with ischaemic stroke and its subtypes (SiGN): a genome-wide association study. *Lancet Neurology*. 2015;15:174–184.

13. Ay H, Benner T, Arsava EM, et al. A computerized algorithm for etiologic classification of ischemic stroke: The causative classification of stroke system. *Stroke*. 2007;38:2979–2984.

14. Arsava EM, Ballabio E, Benner T, et al. The causative classification of stroke system: An international reliability and optimization study. *Neurology*. 2010;75:1277–1284.

15. Adams HP Jr, Birgitte H. Bendixen P, Jaap Kappelle L, et al. Classification of Subtype of Acute Ischemic Stroke: Definitions for Use in a Multicenter Clinical Trial. *Stroke*. 1993;24:35–41.

16. Loh P-R, Tucker G, Bulik-Sullivan BK, et al. Efficient Bayesian mixed-model analysis increases association power in large cohorts. *Nat Genet*. 2015;47:284–290.

- 1 17. Okbay A, Beauchamp JP, Fontana MA, et al. Genome-wide association study  
2 identifies 74 loci associated with educational attainment. *Nature*. Nature  
3 Publishing Group, a division of Macmillan Publishers Limited. All Rights  
4 Reserved.; 2016;533:539.
- 5 18. Weng L-C, Preis SR, Hulme OL, et al. Genetic Predisposition, Clinical Risk Factor  
6 Burden, and Lifetime Risk of Atrial Fibrillation. *Circulation* [online serial]. Epub  
7 2017 Nov 12. Accessed at:  
8 <http://dx.doi.org/10.1161/CIRCULATIONAHA.117.031431>.
- 9 19. Franz MR, Karasik PL, Li C, Moubarak J, Chavez M. Electrical remodeling of the  
10 human atrium: similar effects in patients with chronic atrial fibrillation and atrial  
11 flutter. *J Am Coll Cardiol*. 1997;30:1785–1792.
- 12 20. Lamas GA, Lee KL, Sweeney MO, et al. Ventricular pacing or dual-chamber  
13 pacing for sinus-node dysfunction. *N Engl J Med*. 2002;346:1854–1862.
- 14 21. Petty GW, Brown RD, Whisnant JP, Sicks JD, Michael O’Fallon W, Wiebers DO.  
15 Ischemic Stroke Subtypes. *Stroke*. American Heart Association, Inc.;  
16 1999;30:2513–2516.
- 17 22. Kolominsky-Rabas PL, Weber M, Gefeller O, Neundoerfer B, Heuschmann PU.  
18 Epidemiology of Ischemic Stroke Subtypes According to TOAST Criteria. *Stroke*.  
19 American Heart Association, Inc.; 2001;32:2735–2740.
- 20 23. NINDS Stroke Genetics Network (SiGN), International Stroke Genetics  
21 Consortium. Loci associated with ischaemic stroke and its subtypes (SiGN): a  
22 genome-wide association study. *Lancet Neurol*. Elsevier Ltd; 2015;15:4–7.
- 23 24. Go AS, Hylek EM, Phillips KA, et al. Prevalence of diagnosed atrial fibrillation in  
24 adults: national implications for rhythm management and stroke prevention:  
25 the AnTicoagulation and Risk Factors in Atrial Fibrillation (ATRIA) Study. *JAMA*.  
26 2001;285:2370–2375.
- 27 25. Weng L-C, Choi SH, Klarin D, et al. Heritability of Atrial Fibrillation. *Circ*  
28 *Cardiovasc Genet*. American Heart Association, Inc.; 2017;10:e001838.
- 29 26. Alonso A, Krijthe BP, Aspelund T, et al. Simple risk model predicts incidence of  
30 atrial fibrillation in a racially and geographically diverse population: the  
31 CHARGE-AF consortium. *J Am Heart Assoc*. 2013;2:e000102.
- 32 27. Henninger N, Goddeau RP Jr, Karmarkar A, Helenius J, McManus DD. Atrial  
33 Fibrillation Is Associated With a Worse 90-Day Outcome Than Other  
34 Cardioembolic Stroke Subtypes. *Stroke*. 2016;47:1486–1492.
- 35 28. Lubitz SA, Parsons OE, Anderson CD, et al. Atrial Fibrillation Genetic Risk and  
36 Ischemic Stroke Mechanisms. *Stroke*. 2017;48:1451–1456.
- 37 29. Lewis CM, Vassos E. Prospects for using risk scores in polygenic medicine.  
38 *Genome Med*. 2017;9:96.



- 1 30. Mavaddat N, Pharoah PDP, Michailidou K, et al. Prediction of breast cancer risk  
2 based on profiling with common genetic variants. *J Natl Cancer Inst* [online  
3 serial]. 2015;107. Accessed at: <http://dx.doi.org/10.1093/jnci/djv036>.
- 4 31. Khera AV, Chaffin M, Aragam KG, et al. Genome-wide polygenic score to  
5 identify a monogenic risk-equivalent for coronary disease [online]. *bioRxiv*  
6 2017. Accessed at: <http://dx.doi.org/10.1101/218388>.
- 7 32. Thériault S, Lali R, Chong M, Velianou JL, Natarajan MK, Paré G. Polygenic  
8 Contribution in Individuals With Early-Onset Coronary Artery DiseaseClinical  
9 Perspective. *Circ Genom Precis Med*. Lippincott Williams & Wilkins;  
10 2018;11:e001849.
- 11 33. Khera AV, Emdin CA, Drake I, et al. Genetic Risk, Adherence to a Healthy  
12 Lifestyle, and Coronary Disease. *N Engl J Med*. 2016;375:2349–2358.
- 13 34. Mega JL, Stitzel NO, Smith JG, et al. Genetic risk, coronary heart disease  
14 events, and the clinical benefit of statin therapy: an analysis of primary and  
15 secondary prevention trials. *Lancet*. 2015;385:2264–2271.
- 16 35. Gladstone DJ, Spring M, Dorian P, et al. Atrial fibrillation in patients with  
17 cryptogenic stroke. *N Engl J Med*. 2014;370:2467–2477.
- 18 36. Sanna T, Diener H-C, Passman RS, et al. Cryptogenic stroke and underlying  
19 atrial fibrillation. *N Engl J Med*. 2014;370:2478–2486.
- 20 37. ACTIVE Investigators, Connolly SJ, Pogue J, et al. Effect of clopidogrel added to  
21 aspirin in patients with atrial fibrillation. *N Engl J Med*. 2009;360:2066–2078.
- 22 38. Diener H-C, Eikelboom J, Connolly SJ, et al. Apixaban versus aspirin in patients  
23 with atrial fibrillation and previous stroke or transient ischaemic attack: a  
24 predefined subgroup analysis from AVERROES, a randomised trial. *Lancet*  
25 *Neurol*. 2012;11:225–231.
- 26 39. Seshadri S, Beiser A, Kelly-Hayes M, et al. The Lifetime Risk of Stroke:  
27 Estimates From the Framingham Study. *Stroke*. 2006;37:345–350.

Supplementary information for

# Shared Genetic Contributions to Atrial Fibrillation and Ischemic Stroke Risk

Sara L. Pulit, Lu-Chen Weng, Patrick F McArdle, Ludovic Trinquart, Seung Hoan Choi, Braxton D. Mitchell, Jonathan Rosand, Paul I W de Bakker, Emelia J Benjamin, Patrick T Ellinor, Steven J Kittner, Steven A Lubitz\*, Christopher D Anderson\*, on behalf of the Atrial Fibrillation Genetics Consortium and the International Stroke Genetics Consortium.

## **Code and data release**

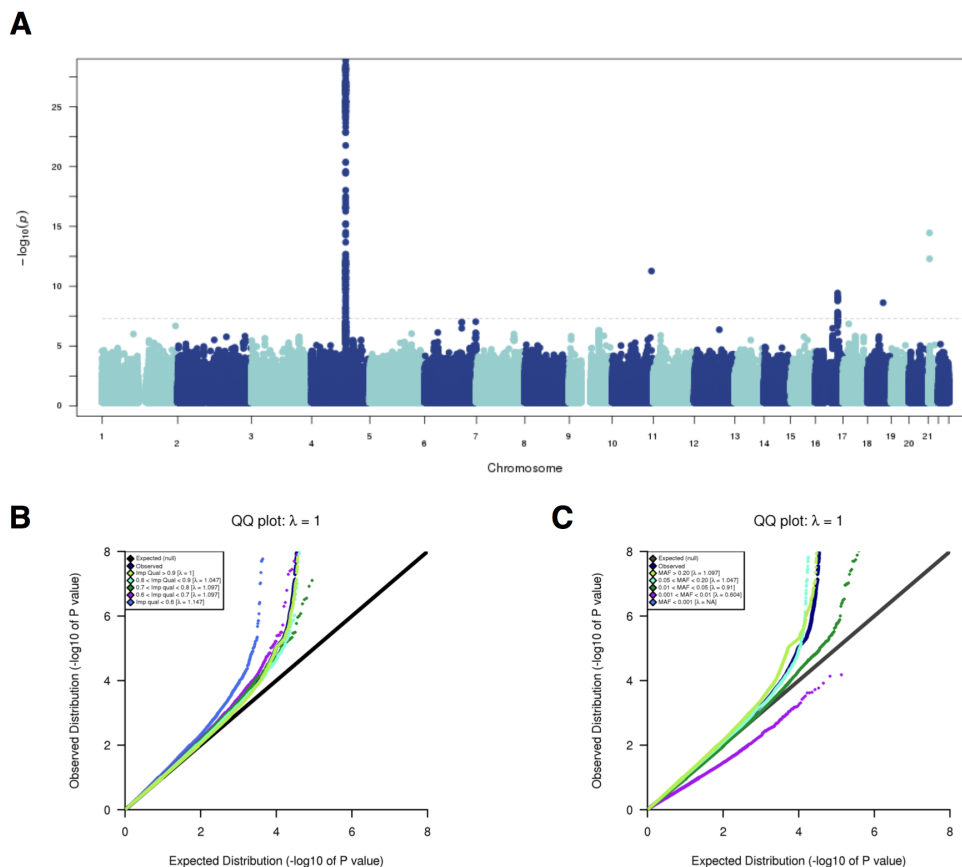
For access to information related to this project, including code, sample identifiers, SNP identifiers, links to summary-level data, and SNP weights used in the construction of the polygenic risk score, please see this GitHub repository: <https://github.com/UMCUGenetics/Afib-Stroke-Overlap>.

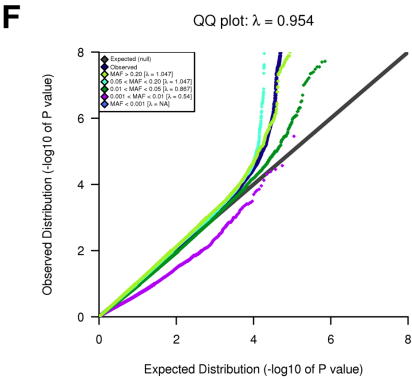
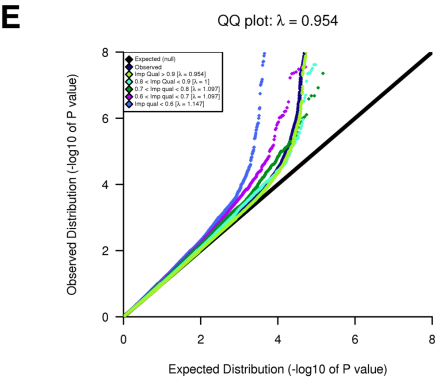
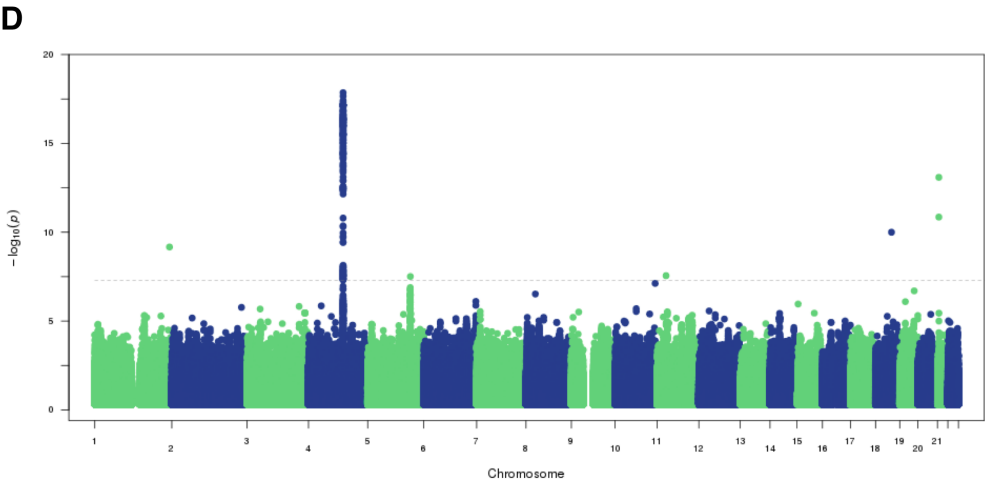
## Table of Contents

Supplementary Figures	Pages 3-11
Supplementary Tables	Pages 12-25
Supplementary Methods	Pages 26-33
Supplementary Results	Page 34
Appendix I: Atrial Fibrillation Genetics (AFGen) Consortium members	Pages 35-38
Appendix II: Stroke Genetics Network (SiGN) Consortium members	Pages 39-42
References	Pages 43-45

## Supplementary Figures

**Supplementary Figure 1 | Genome-wide association study (GWAS) of atrial fibrillation in SiGN.** (A) We performed a GWAS of 3,190 cases with atrial fibrillation, or paroxysmal atrial fibrillation, as well as other diagnoses suggestive of underlying atrial fibrillation, including left atrial thrombus, sick sinus syndrome, and atrial flutter. We additionally included 28,026 referents. We used a linear mixed model and adjusted the model for principal components and sex. The majority of atrial fibrillation risk loci identified through previous GWAS efforts were identified here at nominal significance or better (see **Supplementary Table 2**). The Manhattan plot only shows QC-passing SNPs with minor allele frequency > 1% and imputation quality score > 0.8. (B) Quantile-quantile (QQ) plot indicating SNPs stratified by minor allele frequency and the corresponding genomic inflation factor ( $\lambda$ ) for each stratum. (C) QQ plot showing SNPs stratified by imputation quality and the corresponding  $\lambda$  for each stratum. Figures D-F are identical to those of A-C, but for the analysis performed in atrial fibrillation cases only ( $N = 1,751$ ). We performed this as an internal sensitivity analysis only, to ensure that more broadly defining the atrial fibrillation phenotype was not introducing additional phenotypic noise.

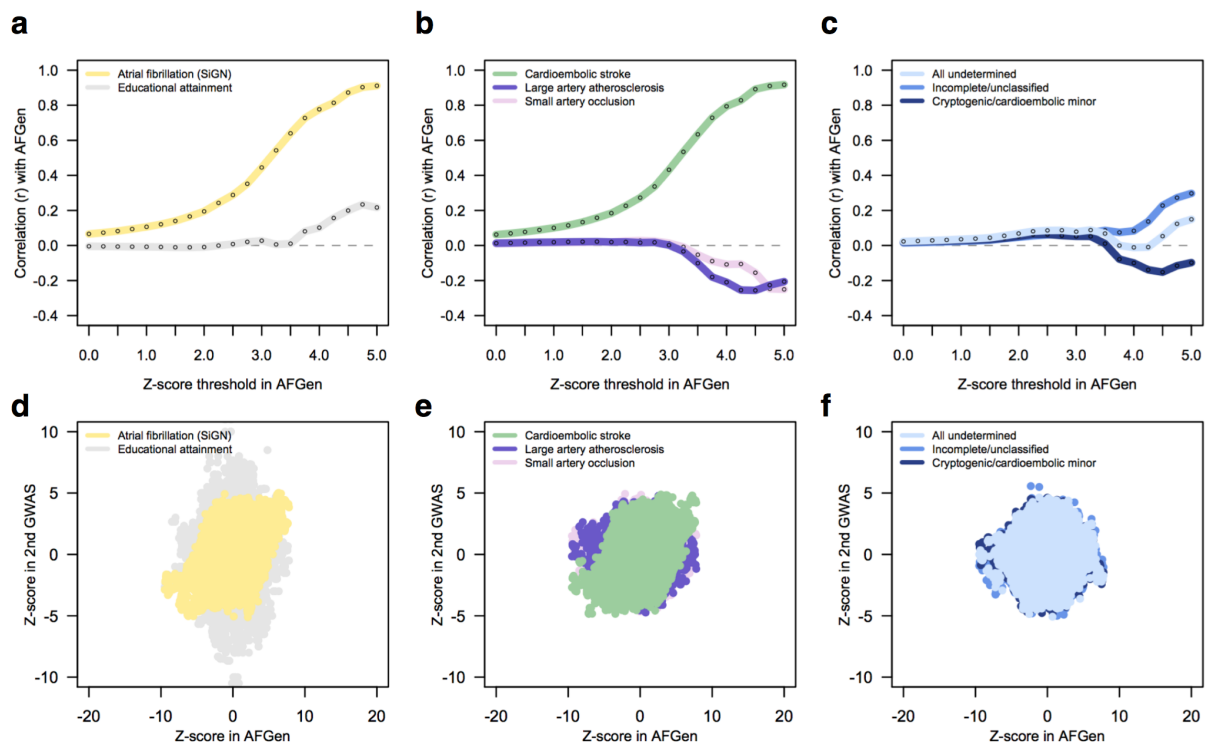




## Supplementary Figure 2 | Genetic correlations between atrial fibrillation and ischemic stroke subtypes.

To estimate genetic correlation between atrial fibrillation and ischemic stroke subtypes, we calculated Pearson's  $r$  between SNP z-scores in the AFGen GWAS of atrial fibrillation and in GWAS of ischemic stroke subtypes and atrial fibrillation performed here in the SiGN data. Here, we present data identical to that shown in Figure 2 of the main manuscript, but removing  $\pm 2\text{Mb}$  around the two most significant loci discovered in atrial fibrillation and cardioembolic stroke: the region around *PITX2* (chromosome 4) and the region around *ZFHX3* (chromosome 16). (a) Genome wide, atrial fibrillation in AFGen and in SiGN correlate with increasing strength as the z-score in AFGen increases. Educational attainment is included here as a null comparator. (b) Genetic signal in cardioembolic stroke also correlates strongly with atrial fibrillation genetic signal in AFGen, but we do not observe correlation between atrial fibrillation and the other primary stroke subtypes. (c) Removing the *PITX2* and *ZFHX3* regions leaves only somewhat modest correlation between the incomplete/unclassified undetermined subtype and atrial fibrillation. Panels (d-f) show underlying data.

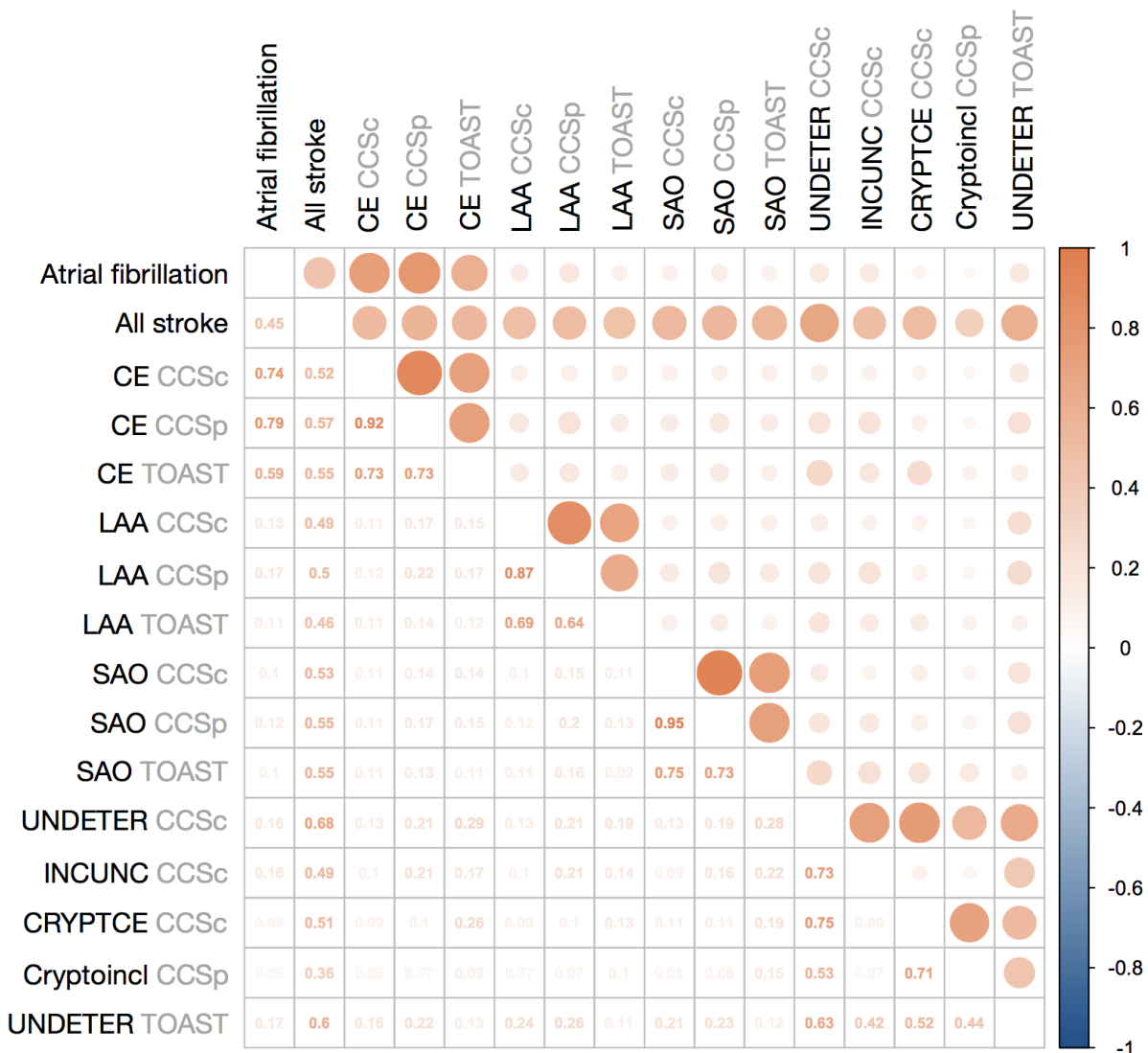
Correlations restricted to those SNPs used in the polygenic risk score for atrial fibrillation were: AFGen vs atrial fibrillation in SiGN,  $r = 0.78$ ; AFGen vs. cardioembolic stroke in SiGN,  $r = 0.75$ .



**Supplementary Figure 3 | Genetic correlation and phenotypic correlation of atrial fibrillation and stroke subtypes in SiGN.** (a) Using genome-wide SNP effects extracted from GWAS of atrial fibrillation, all stroke, and stroke subtypes, we calculated the Pearson's correlation ( $r$ ) between each pair of available phenotypes (blue indicates strong negative correlation; orange indicates strong positive correlation). Here, we show all correlations. Correlations are indicated by circle size in the upper half of the square, and the exact correlation values are shown in the lower half of the square.

CE, cardioembolic stroke; LAA, large artery atherosclerosis; SAO, small artery occlusion; UNDETER, undetermined; INCUNC, incomplete/unclassified; CRYPTCE, cryptogenic and CE minor; Cryptoincl, cryptogenic; CCSc, CCS Causative subtyping system; CCSp, CCS Phenotypic subtyping system; TOAST, TOAST subtyping system.

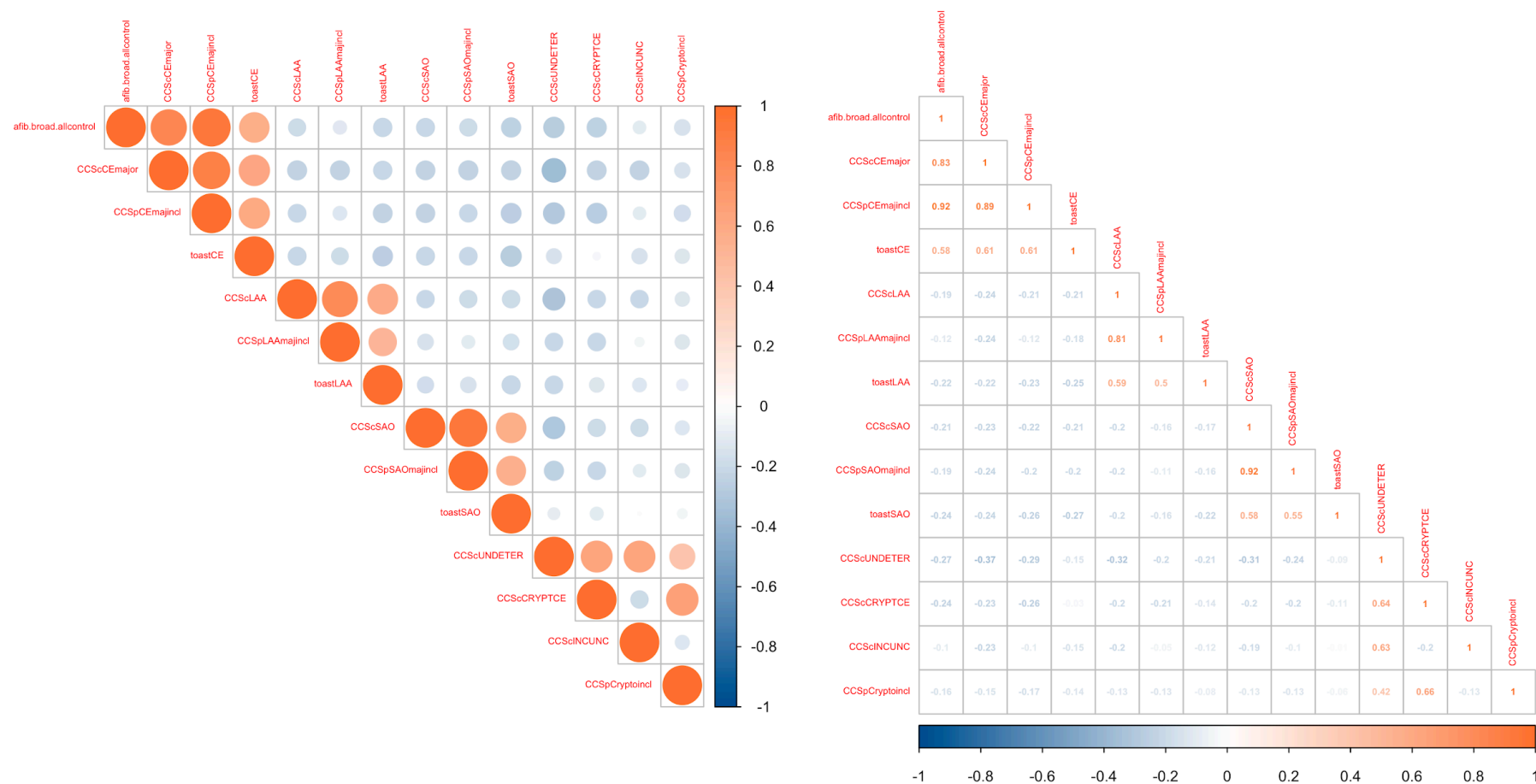
**a.**



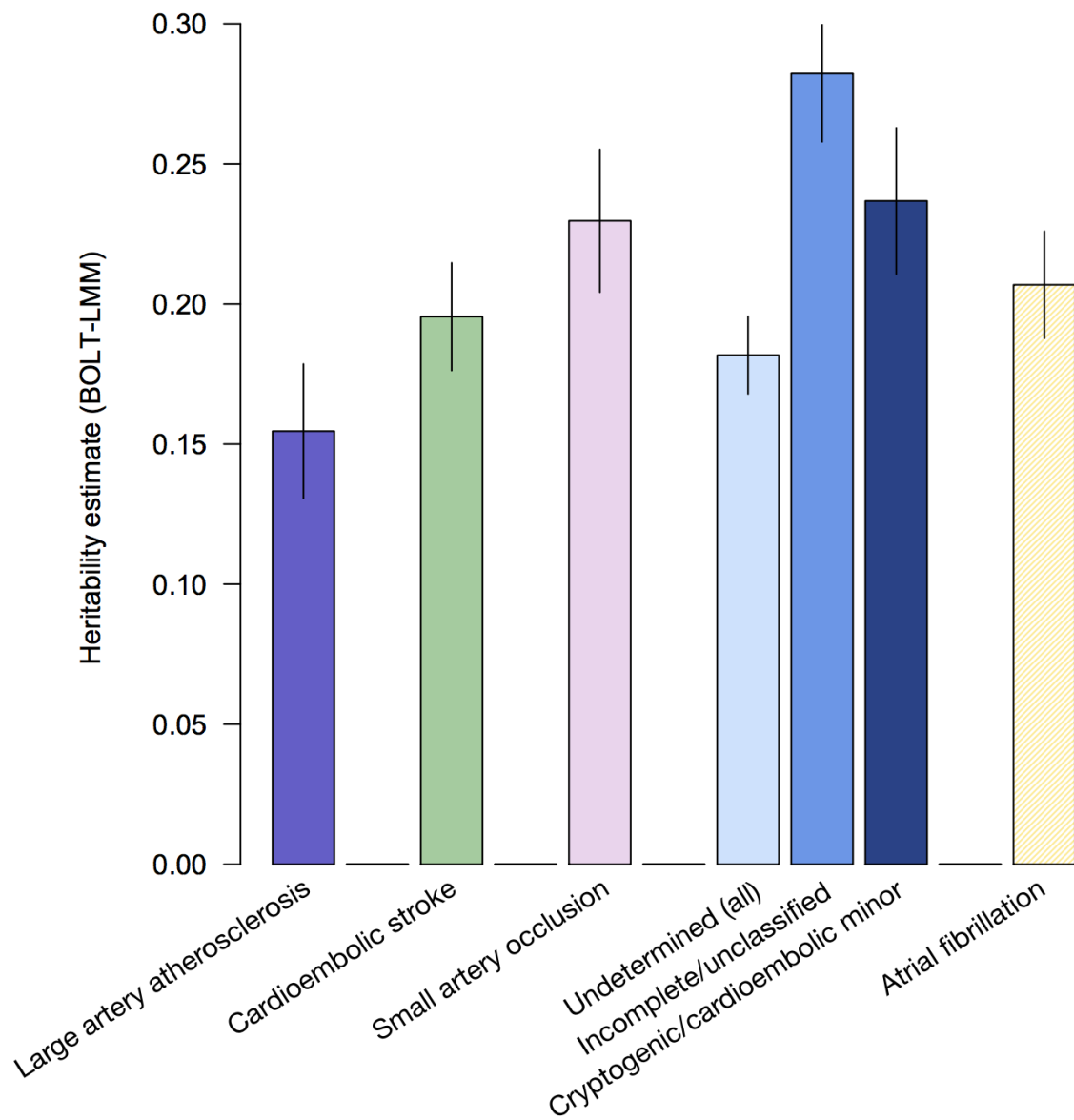
**b.** Same correlation calculations as in (a), but this time using the phenotypic data only (and looking in cases only, as all controls have the same phenotype). Note that the atrial fibrillation phenotypes and cardioembolic stroke phenotypes are highly correlated in the SiGN data ( $r = 0.83$  between atrial fibrillation and cardioembolic stroke as determined by the CCS Causative subtype system).



CE, cardioembolic stroke; LAA, large artery atherosclerosis; SAO, small artery occlusion; UNDETER, undetermined; INCUNC, incomplete/unclassified; CRYPTCE, cryptogenic and CE minor; Cryptoincl, cryptogenic; CCS<sub>c</sub>, CCS Causative subtyping system; CCS<sub>p</sub>, CCS Phenotypic subtyping system; TOAST, TOAST subtyping system.

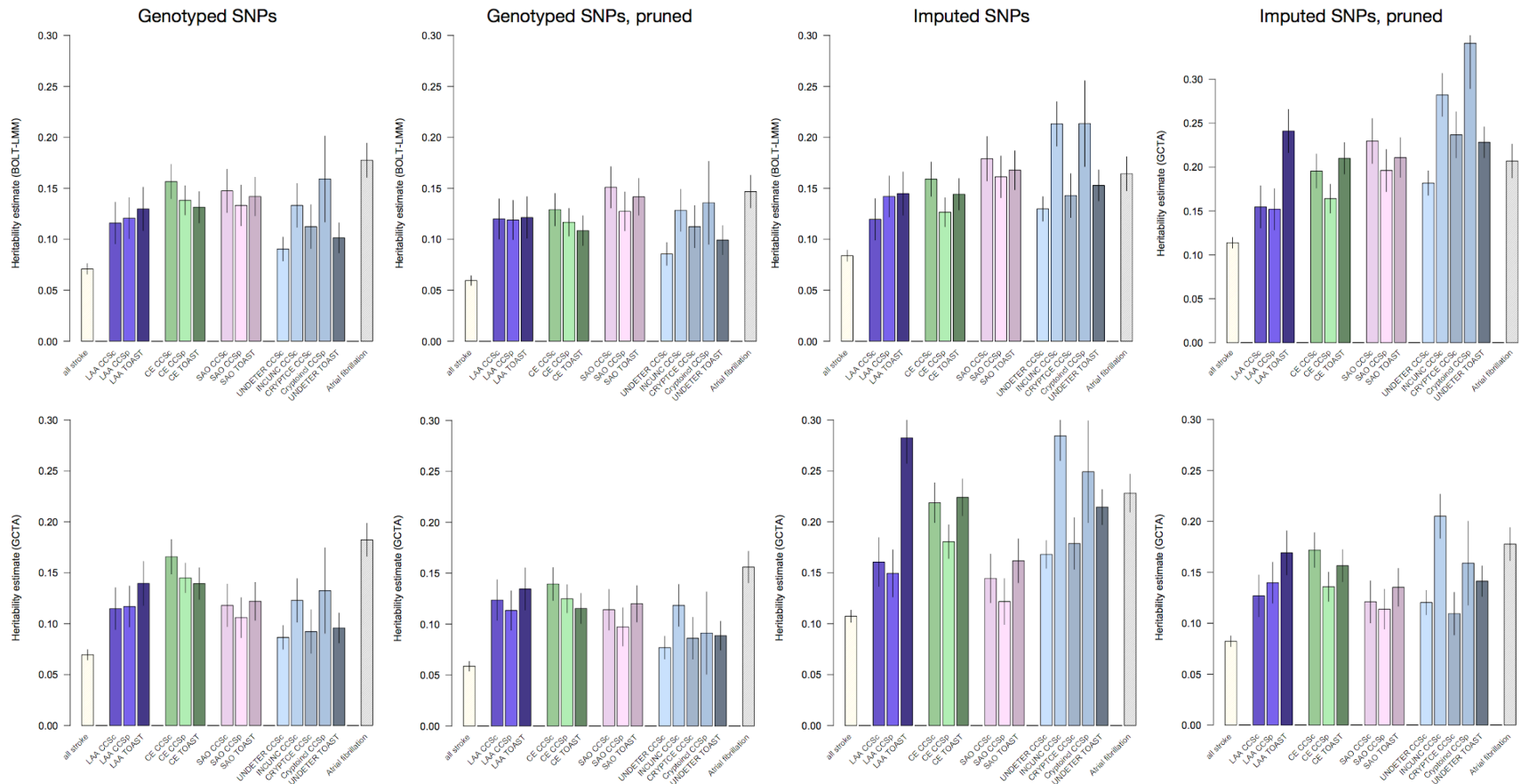


**Supplementary Figure 4 | Estimated heritability of ischemic stroke subtypes and atrial fibrillation.** Using all available stroke cases in SiGN, we estimated SNP-based heritability of the ischemic stroke subtypes (as sub-typed by the CCS Causative subtyping system) and atrial fibrillation (using the subset of 3,190 cases with atrial fibrillation) using BOLT-LMM and a genetic relationship matrix of high-quality SNPs converted to best-guess genotypes (imputation quality > 0.8, minor allele frequency > 0.01, and pruned at a linkage disequilibrium threshold of 0.2). We assumed a trait prevalence of 1% for all phenotypes. We found heritability estimates in cardioembolic stroke (green) and atrial fibrillation (yellow) to be approximately similar.



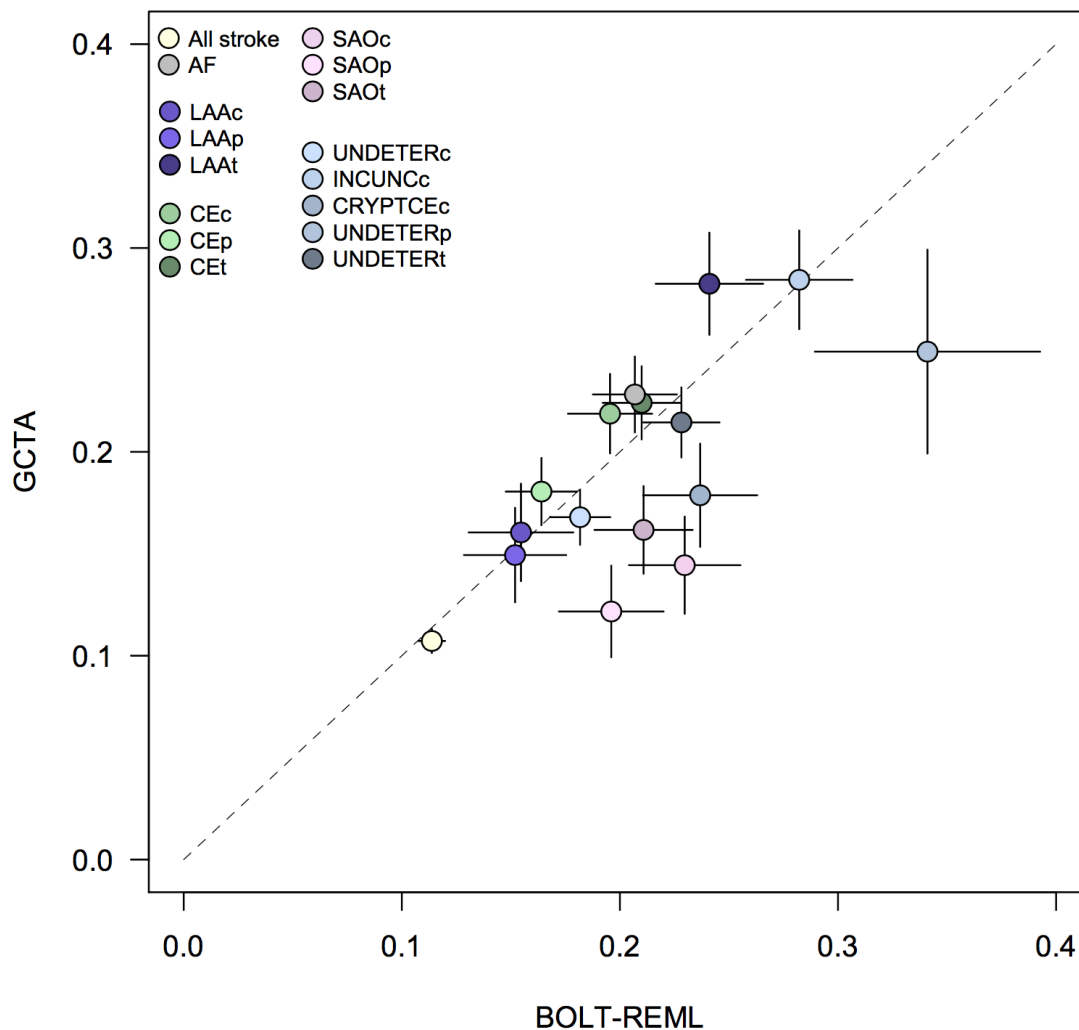
**Supplementary Figure 5 | Heritability of ischemic stroke, its subtypes, and atrial fibrillation.** We computed the SNP-based heritability of all stroke, all stroke subtypes, and atrial fibrillation using BOLT-LMM (top row) and GCTA (bottom row). All SNPs used for analysis had a minor allele frequency > 1% and imputation quality > 0.8 (for imputed SNPs). Imputed SNPs were converted to best-guess genotypes. We assumed a trait prevalence of 1% for all phenotypes and tested the robustness of  $h_g^2$  estimates to SNPs included in the GRM by using four different GRMs: (a) genotyped SNPs only; (b) genotyped, pruned, and filtered (see **Supplemental Methods**); (c) imputed; and (d) imputed, pruned, and filtered. We converted the imputed SNPs to hard-call genotypes before performing heritability analyses. Estimates are shown below, including error bars. The underlying data for these figures are provided in **Supplementary Table 3**.

LAA, large artery atherosclerosis; CE, cardioembolic stroke; SAO, small artery occlusion; UNDETER, undetermined; INCUNC, incomplete/unclassified; CRYPTCE, cryptogenic and CE minor; Cryptoincl, cryptogenic; CCSc, CCS Causative subtyping system; CCSp, CCS Phenotypic subtyping system; TOAST, TOAST subtyping system.



**Supplementary Figure 6 | Comparison of heritability estimates from BOLT-LMM and GCTA.** We computed the heritability of all stroke, all stroke subtypes, and atrial fibrillation using BOLT-LMM and GCTA, as shown in **Supplementary Figure 2**. Below, you will find a comparison of the two methods, with BOLT-REML on the x-axis and GCTA estimates on the y-axis. Error bars are shown for the respective estimates.

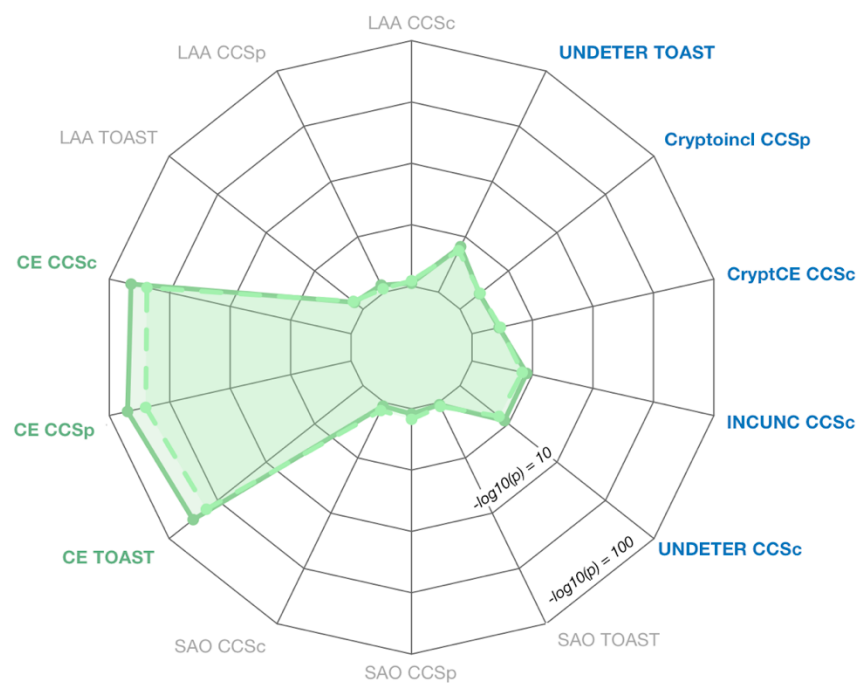
AF, atrial fibrillation; CE, cardioembolic stroke; LAA, large artery atherosclerosis; SAO, small artery occlusion; UNDETER, undetermined; INCUNC, incomplete/unclassified; CRYPTCE, cryptogenic/CE minor; c, CCS Causative; p, CCS Phenotypic; t, TOAST.



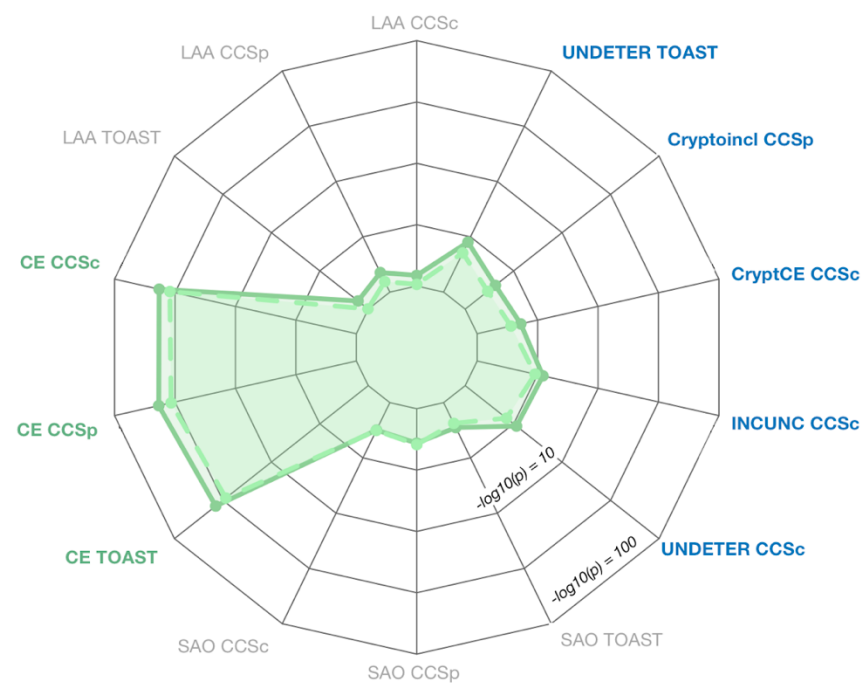
**Supplementary Figure 7 | Association of atrial fibrillation polygenic risk score in ischemic stroke subtypes.** We constructed a polygenic risk score (PRS) from atrial fibrillation-associated SNPs, and tested for association between the score and ischemic stroke subtypes using (a) all available controls (N = 28,026) and (b) controls without atrial fibrillation (N = 3,861). All subtypes from all available subtyping systems are shown here. The PRS strongly associated to cardioembolic stroke (subtypes highlighted in green font) in both sets of controls. In the atrial fibrillation-free set of controls (b) we observed nominal association of the PRS to incomplete/unclassified stroke. Undetermined subtypes are indicated in blue font.

CE, cardioembolic stroke; LAA, large artery atherosclerosis; SAO, small artery occlusion; UNDETER, undetermined; INCUNC, incomplete/unclassified; CRYPTCE, cryptogenic and CE minor; Cryptoincl, cryptogenic; CCSc, CCS Causative subtyping system; CCSp, CCS Phenotypic subtyping system; TOAST, TOAST subtyping system.

**a** All controls



**b** AF-free controls



## Supplementary Tables

### Supplementary Table 1 | Atrial fibrillation cases and controls available from the Stroke Genetics Network (SiGN) Consortium.

*As classified by the CCS Causative system (note that this table is a repeat of **Table 1** from the main manuscript):*

Phenotype	Total	Cardioembolic	Large artery atherosclerosis	Small artery occlusion	Undetermined	
					Incomplete/unclassified	Cryptogenic/CE minor
Atrial fibrillation	1,751	1,495	63	32	151	0
Paroxysmal atrial fibrillation	1,315	1,088	52	23	138	0
Left atrial thrombus	48	37	3	3	4	0
Sick sinus syndrome	79	65	5	3	4	0
Atrial Flutter	106	90	4	2	10	0
Total	3,190	2,684	123	61	298	0



*As classified by the CCS Phenotypic system (note that this system allows a case to be classified into more than one subtype):*

Phenotype	Total	Cardioembolic	Large artery atherosclerosis	Small artery occlusion	Undetermined
Atrial fibrillation	1,751	1,751	161	58	0
Paroxysmal atrial fibrillation	1,315	1,315	126	61	0
Left atrial thrombus	48	48	7	4	0
Sick sinus syndrome	79	79	8	4	0
Atrial Flutter	106	106	11	3	0
Total	3,190	3,190	302	126	0

*As classified by the TOAST system:*

Phenotype	Total	Cardioembolic	Large artery atherosclerosis	Small artery occlusion	Undetermined
Atrial fibrillation	1,751	1,254	26	23	170
Paroxysmal atrial fibrillation	1,315	880	25	19	178
Left atrial thrombus	48	35	1	1	9
Sick sinus syndrome	79	48	0	1	13
Atrial Flutter	106	75	2	3	12
Total	3,190	2,207	54	47	371

*Overlap of atrial fibrillation and cardioembolic stroke in the three subtyping systems in SiGN (CCSc, CCS Causative; CCSp, CCS Phenotypic; TOAST):*

Phenotype	CCSc Cardioembolic	CCSp Cardioembolic	TOAST Cardioembolic
Atrial fibrillation	1,495	1,751	1,254
Paroxysmal atrial fibrillation	1,088	1,315	880
Left atrial thrombus	37	48	35
Sick sinus syndrome	65	79	48
Atrial Flutter	90	106	75
No atrial fibrillation phenotypes	316	418	903
Total	3,000	3,608	3,333

**Supplementary Table 2 | Look-up of previously-associated atrial fibrillation SNPs in SiGN.** After performing a GWAS of atrial fibrillation in the SiGN data, we looked up the 26 known genetic risk loci for atrial fibrillation, as identified in the latest GWAS.<sup>1</sup> Twenty-four of the 25 signals present in the SiGN data were directionally consistent with the previous GWAS. The only signal not directionally consistent was discovered through eQTL analysis. One signal, a rare variant burden signal, was absent from our data (all SNPs here have allele frequency > 1%).

Supplementary Table 2 is provided as a separate, downloadable Excel spreadsheet as well as a tab-delimited text available at the project GitHub repository (download: <https://github.com/saralpulit/Afib-Stroke-Overlap/blob/master/SupplementaryTable2.afib.hits.SiGN-lookup.txt>). The first 14 columns are taken from *Christophersen, et al.*<sup>1</sup> Those columns are:

SNP	single-nucleotide polymorphism; rs identifier
CHR	chromosome
BP	basepair (hg19)
Genes	Closest gene(s)
Location	Where the SNP resides relative to the listed gene
Risk	Risk allele
Ref	Reference allele
RAF	Risk allele frequency
OR	Odds ratio
CI95_1	95% confidence interval for the odds ratio (lower bound)
CI95_2	95% confidence interval for the odds ratio (upper bound)
Pval	Association p-value
Mean_imp	Imputation quality
Analysis	The analysis the variant or gene was discovered in (ExWAS, expression QTL analysis; Meta, meta-analysis; RVAS, rare variant association study)

The remaining columns provided are data points extracted from the atrial fibrillation GWAS in SiGN. They are:

SiGN_RAF	Risk allele frequency in SiGN
SiGN_INFO	Imputation quality (info score) in SiGN
SiGN_BOLT_BETA	Beta of the SNP taken from BOLT-LMM; note that this is a beta that results from a linear mixed model
SiGN_LIAB_BETA	The beta, converted to the liability scale
SiGN_OR	Odds ratio in SiGN
SiGN_SE	Standard error of SiGN_BOLT_BETA
SiGN_P_BOLT	P-value from BOLT-LMM (for the infinitesimal model only)

**Supplementary Table 3 | Genetic correlations between atrial fibrillation and ischemic stroke subtypes.** To estimate genetic correlation between atrial fibrillation and ischemic stroke subtypes, we calculated Pearson's  $r$  between SNP z-scores in the Atrial Fibrillation Genetics (AFGen) GWAS of atrial fibrillation and in GWAS of ischemic stroke subtypes and atrial fibrillation performed here in the SiGN data. The correlation calculations are provided in this table, which is split into two parts and is available to download in text format here:

Part A: correlations calculated across all genome-wide SNPs

<https://github.com/saralpulit/Afib-Stroke-Overlap/blob/master/SuppTable4.partA.SiGN.AFGen.trait.correlations.txt>

Part B: correlations calculated across all genome-wide SNPs except those  $\pm 2$ Mb from the PITX2 and ZFHX3 index SNPs provided in Supplementary Table 2

<https://github.com/saralpulit/Afib-Stroke-Overlap/blob/master/SuppTable4.partB.SiGN.AFGen.trait.correlations.drop-pitx2-zfhx3.txt>

The headers of the two files are exactly the same:

Column	Definition
Z.threshold	Z-score threshold used to subset AFGen SNPs
EduYrs.Z	Correlation with z-scores from educational attainment GWAS
afib.broad.Z	Correlation with z-scores from atrial fibrillation (broadly defined phenotype) GWAS
allstroke.Z	Correlation with z-scores from all stroke GWAS
CCScCEmajor.Z	Correlation with z-scores from CCSc CE GWAS
CCScCRYPTCE.Z	Correlation with z-scores from CCSc CRYPTCE GWAS
CCScINCUNC.Z	Correlation with z-scores from CCSc INCUNC GWAS
CCScLAA.Z	Correlation with z-scores from CCSc LAA GWAS
CCScSAO.Z	Correlation with z-scores from CCSc SAO GWAS
CCScUNDETER.Z	Correlation with z-scores from CCSc UNDETER GWAS
CCSpCEmajincl.Z	Correlation with z-scores from CCSp CE GWAS
CCSpCryptoincl.Z	Correlation with z-scores from CCSp Cryptogenic GWAS
CCSpLAAmajincl.Z	Correlation with z-scores from CCSp LAA GWAS
CCSpSAOmajincl.Z	Correlation with z-scores from CCSp SAO GWAS
toastCE.Z	Correlation with z-scores from TOAST CE GWAS
toastLAA.Z	Correlation with z-scores from TOAST LAA GWAS
toastSAO.Z	Correlation with z-scores from TOAST SAO GWAS
toastUNDETER.Z	Correlation with z-scores from TOAST UNDETER GWAS

CCSc, CCS Causative subtyping system; CCSp, CCS Phenotypic subtyping system; TOAST, TOAST subtyping system; CE, cardioembolic stroke; LAA, large artery atherosclerosis; SAO, small artery occlusion; UNDETER, undetermined; INCUNC, incomplete/unclassified; CRYPTCE, cryptogenic and CE minor.

**Supplementary Table 4 | Heritability calculations in atrial fibrillation and ischemic stroke subtypes.** (a) We calculated the SNP-based heritability ( $h_g^2$ ) of atrial fibrillation, all ischemic stroke, and the stroke subtypes using GCTA<sup>2</sup>. All SNPs used had minor allele frequency > 1% and imputation quality > 0.8 (for imputed SNPs). Imputed SNPs were converted to best-guess genotypes. We assumed a trait prevalence of 1% for all phenotypes and tested the robustness of  $h_g^2$  estimates to SNPs included in the GRM by using four different GRMs: (i) genotyped only; (ii) genotyped, pruned, and filtered (see **Supplemental Methods**); (iii) imputed; and (iv) imputed, pruned, and filtered. (b) We performed the exact same analysis but using BOLT-LMM to estimate  $h_g^2$ . BOLT-LMM estimates were converted to the liability scale (see **Supplemental Methods**).

Geno, genotyped; SE, standard error; CCSc, CCS Causative; CCSp, CCS Phenotypic

*a.  $h_g^2$  estimates in GCTA*

Subtype	Subtyping system	Cases	Geno $h_g^2$ (SE)	Geno, filtered $h_g^2$ (SE)	Imputed $h^2$ (SE)	Imputed, filtered $h_g^2$ (SE)
Large artery atherosclerosis	CCSc	2,385	0.115 (0.020)	0.124 (0.020)	0.127 (0.020)	0.160 (0.024)
	CCSp	2,449	0.117 (0.020)	0.113 (0.019)	0.140 (0.020)	0.149 (0.023)
	TOAST	2,318	0.139 (0.021)	0.135 (0.021)	0.169 (0.022)	0.282 (0.025)
Cardio-embolic	CCSc	3,000	0.166 (0.017)	0.139 (0.016)	0.172 (0.017)	0.219 (0.019)
	CCSp	3,608	0.145 (0.014)	0.125 (0.014)	0.136 (0.014)	0.181 (0.016)
	TOAST	3,333	0.139 (0.015)	0.115 (0.015)	0.156 (0.016)	0.224 (0.018)
Small artery occlusion	CCSc	2,262	0.118 (0.021)	0.114 (0.020)	0.121 (0.021)	0.144 (0.024)
	CCSp	2,419	0.106 (0.020)	0.097 (0.019)	0.114 (0.019)	0.122 (0.022)
	TOAST	2,631	0.122 (0.019)	0.120 (0.018)	0.135 (0.019)	0.162 (0.021)
Undetermined	CCSc	4,574	0.087 (0.012)	0.077 (0.011)	0.120 (0.012)	0.168 (0.014)
	CCSc (INCUNC)	2,280	0.123 (0.021)	0.118 (0.021)	0.205 (0.022)	0.284 (0.024)
	CCSc (CRYPTCE)	2,294	0.092 (0.021)	0.086 (0.020)	0.109 (0.021)	0.179 (0.025)
	CCSp	1,096	0.132 (0.042)	0.091 (0.040)	0.159 (0.041)	0.249 (0.050)
	TOAST	3,479	0.096 (0.015)	0.089 (0.014)	0.141 (0.015)	0.214 (0.017)
--	All stroke	13,390	0.069 (0.005)	0.059 (0.005)	0.082 (0.005)	0.107 (0.006)
--	Atrial fibrillation	3,190	0.182 (0.016)	0.156 (0.015)	0.178 (0.016)	0.228 (0.019)

*b.  $h_g^2$  estimates in BOLT-LMM*

Subtype	Subtyping system	Cases	Geno $h_g^2$ (SE)	Geno, filtered $h_g^2$ (SE)	Imputed $h^2$ (SE)	Imputed, filtered $h_g^2$ (SE)
Large artery atherosclerosis	CCSc	2,385	0.116 (0.020)	0.120 (0.020)	0.120 (0.020)	0.155 (0.024)
	CCSp	2,449	0.121 (0.020)	0.119 (0.019)	0.142 (0.020)	0.152 (0.023)
	TOAST	2,318	0.130 (0.021)	0.121 (0.020)	0.145 (0.021)	0.241 (0.025)
Cardio-embolic	CCSc	3,000	0.157 (0.017)	0.129 (0.016)	0.159 (0.017)	0.195 (0.019)
	CCSp	3,608	0.138 (0.014)	0.117 (0.014)	0.127 (0.014)	0.164 (0.016)
	TOAST	3,333	0.131 (0.015)	0.108 (0.015)	0.144 (0.015)	0.210 (0.018)
Small artery occlusion	CCSc	2,262	0.147 (0.021)	0.151 (0.020)	0.179 (0.022)	0.230 (0.026)
	CCSp	2,419	0.133 (0.020)	0.127 (0.019)	0.161 (0.020)	0.196 (0.024)
	TOAST	2,631	0.142 (0.019)	0.142 (0.018)	0.168 (0.019)	0.211 (0.022)
Undetermined	CCSc	4,574	0.090 (0.012)	0.086 (0.011)	0.130 (0.012)	0.182 (0.014)
	CCSc (INCUNC)	2,280	0.133 (0.021)	0.118 (0.021)	0.128 (0.021)	0.282 (0.024)
	CCSc (CRYPTCE)	2,294	0.112 (0.021)	0.112 (0.021)	0.143 (0.021)	0.237 (0.026)
	CCSp	1,096	0.159 (0.042)	0.136 (0.041)	0.213 (0.042)	0.341 (0.052)
	TOAST	3,479	0.101 (0.015)	0.099 (0.014)	0.153 (0.015)	0.228 (0.017)
--	All stroke	13,390	0.169 (0.012)	0.059 (0.005)	0.084 (0.005)	0.114 (0.006)
--	Atrial fibrillation	3,190	0.169 (0.016)	0.140 (0.015)	0.156 (0.016)	0.200 (0.018)

**Supplementary Table 5 | Association between the atrial fibrillation polygenic risk score and ischemic stroke subtypes.** We tested the association between a polygenic risk score (PRS) constructed from atrial fibrillation-associated SNPs and all stroke subtypes. The results of those association tests are shown here. We used two groups of controls: all available controls (N = 28,026 in the model without clinical covariates; N = 14,357 in the model with clinical covariates) and all controls that were free of atrial fibrillation (AF, N = 3,860 in the model without clinical covariates; N = 3,786 in the model with clinical covariates). All analyses were adjusted for sex and principal components (PCs). Regression analyses were optionally adjusted for clinical covariates (age, cardiovascular disease, type 2 diabetes status, smoking status, and hypertension).

Significant results ( $p = 0.0062$ , Bonferroni-corrected for four subtype groups and two independent subtyping classifications -- CCS and TOAST -- are bolded).

SE, standard error; CCSc, CCS Causative; CCSp, CCS Phenotypic; covar, covariates.

**Large artery atherosclerosis (LAA):**

All controls included in model without clinical covariates, N = 28,026; with clinical covariates, N = 14,357

Non-AF controls included in model without clinical covariates, N = 3,860; with clinical covariates, N = 3,786

Case definition	Control definition	Cases		Logistic regression, adjusted for PCs and sex			Logistic regression, adjusted for PCs, sex, and clinical covariates		
		w/out clinical covars	with clinical covars	Beta	SE	P-value	Beta	SE	P-value
CCSc LAA	Non-AF controls	2,385	2,093	0.008	0.015	0.600	0.002	0.018	0.929
CCSc LAA	All controls	2,385	2,093	-0.002	0.012	0.885	-0.004	0.013	0.786
CCSp LAA	Non-AF controls	2,449	2,149	0.016	0.016	0.315	0.010	0.018	0.570
CCSp LAA	All controls	2,449	2,149	0.004	0.011	0.694	0.002	0.013	0.850
TOAST LAA	Non-AF controls	2,318	1,884	0.010	0.016	0.528	0.000	0.018	0.980
TOAST LAA	All controls	2,318	1,884	-0.006	0.012	0.594	-0.008	0.014	0.550
<i>Results after standardizing PRS to a z-score</i>									
CCSc LAA	Non-AF controls	2,385	2,093	0.016	0.030	0.600	0.003	0.035	0.929
CCSc LAA	All controls	2,385	2,093	-0.003	0.022	0.885	-0.007	0.026	0.786
CCSp LAA	Non-AF controls	2,449	2,149	0.031	0.030	0.315	0.020	0.035	0.570
CCSp LAA	All controls	2,449	2,149	0.009	0.022	0.694	0.005	0.026	0.850
TOAST LAA	Non-AF controls	2,318	1,884	0.019	0.031	0.528	-0.001	0.036	0.980
TOAST LAA	All controls	2,318	1,884	-0.012	0.023	0.594	-0.016	0.027	0.550



**Cardioembolic stroke (CE):**All controls included in model without clinical covariates,  $N = 28,026$ ; with clinical covariates,  $N = 14,357$ Non-AF controls included in model without clinical covariates,  $N = 3,860$ ; with clinical covariates,  $N = 3,786$ 

Case definition	Control definition (N)	Cases		Logistic regression, adjusted for PCs and sex			Logistic regression, adjusted for PCs, sex, and clinical covariates		
				Beta	SE	P-value	Beta	SE	P-value
CCSc CE	Non-AF (3,869)	3,000	2,725	0.187	0.014	<b>1.59E-42</b>	0.218	0.018	<b>1.40E-34</b>
CCSc CE	All (28,026)	3,000	2,725	0.169	0.010	<b>1.01E-65</b>	0.173	0.012	<b>1.45E-48</b>
CCSp CE	Non-AF (3,869)	3,608	3,281	0.178	0.013	<b>6.98E-43</b>	0.203	0.017	<b>8.34E-34</b>
CCSp CE	All (28,026)	3,608	3,281	0.161	0.009	<b>2.43E-70</b>	0.163	0.011	<b>1.05E-49</b>
TOAST CE	Non-AF (3,869)	3,333	3,074	0.171	0.013	<b>3.17E-37</b>	0.172	0.015	<b>3.22E-29</b>
TOAST CE	All (28,026)	3,333	3,074	0.149	0.009	<b>3.00E-56</b>	0.146	0.011	<b>4.43E-41</b>
<i>Results after standardizing PRS to a z-score</i>									
CCSc CE	Non-AF (3,869)	3,000	2,725	0.365	0.027	<b>1.59E-42</b>	0.425	0.035	<b>1.40E-34</b>
CCSc CE	All (28,026)	3,000	2,725	0.329	0.019	<b>1.01E-65</b>	0.337	0.023	<b>1.45E-48</b>
CCSp CE	Non-AF (3,869)	3,608	3,281	0.348	0.025	<b>6.98E-43</b>	0.397	0.033	<b>8.34E-34</b>
CCSp CE	All (28,026)	3,608	3,281	0.315	0.018	<b>2.43E-70</b>	0.318	0.021	<b>1.05E-49</b>
TOAST CE	Non-AF (3,869)	3,333	3,074	0.334	0.026	<b>3.17E-37</b>	0.335	0.030	<b>3.22E-29</b>
TOAST CE	All (28,026)	3,333	3,074	0.291	0.018	<b>3.00E-56</b>	0.284	0.021	<b>4.43E-41</b>

**Small artery occlusion (SAO):**All controls included in model without clinical covariates,  $N = 28,026$ ; with clinical covariates,  $N = 14,357$ Non-AF controls included in model without clinical covariates,  $N = 3,860$ ; with clinical covariates,  $N = 3,786$ 

Case definition	Control definition (N)	Cases		Logistic regression, adjusted for PCs and sex			Logistic regression, adjusted for PCs, sex, and clinical covariates		
				Beta	SE	P-value	Beta	SE	P-value
CCSc SAO	Non-AF (3,869)	2,262	2,124	0.023	0.017	0.170	0.026	0.019	0.163
CCSc SAO	All (28,026)	2,262	2,124	0.002	0.012	0.842	0.006	0.013	0.660
CCSp SAO	Non-AF (3,869)	2,419	2,267	0.025	0.016	0.124	0.029	0.018	0.109
CCSp SAO	All (28,026)	2,419	2,267	0.003	0.012	0.787	0.007	0.013	0.602
TOAST SAO	Non-AF (3,869)	2,631	2,415	0.021	0.016	0.209	0.019	0.018	0.289
TOAST SAO	All (28,026)	2,631	2,415	0.001	0.011	0.902	0.003	0.013	0.826
<i>Results after standardizing PRS to a z-score</i>									
CCSc SAO	Non-AF (3,869)	2,262	2,124	0.046	0.033	0.170	0.051	0.036	0.163
CCSc SAO	All (28,026)	2,262	2,124	0.005	0.023	0.842	0.012	0.026	0.660
CCSp SAO	Non-AF (3,869)	2,419	2,267	0.049	0.032	0.124	0.057	0.035	0.109
CCSp SAO	All (28,026)	2,419	2,267	0.006	0.023	0.787	0.013	0.025	0.602
TOAST SAO	Non-AF (3,869)	2,631	2,415	0.040	0.032	0.209	0.037	0.035	0.289
TOAST SAO	All (28,026)	2,631	2,415	0.003	0.022	0.902	0.005	0.025	0.826

**Undetermined strokes:**

All controls included in model without clinical covariates,  $N = 28,026$ ; with clinical covariates,  $N = 14,357$

Non-AF controls included in model without clinical covariates,  $N = 3,860$ ; with clinical covariates,  $N = 3,786$

Case definition	Control definition (N)	Cases		Logistic regression, adjusted for PCs and sex			Logistic regression, adjusted for PCs, sex, and clinical covariates		
				Beta	SE	P-value	Beta	SE	P-value
CCSc UNDETER	Non-AF (3,869)	4,574	4,169	0.036	0.013	<b>0.004</b>	0.031	0.014	0.022
CCSc UNDETER	All (28,026)	4,574	4,169	0.021	0.009	0.013	0.021	0.010	0.030
CCSc INCUNC	Non-AF (3,869)	2,280	2,093	0.046	0.016	<b>0.003</b>	0.045	0.017	0.010
CCSc INCUNC	All (28,026)	2,280	2,093	0.028	0.012	0.015	0.029	0.013	0.025
CCSc CRYPTCE	Non-AF (3,869)	2,294	2,076	0.030	0.016	0.051	0.026	0.017	0.124
CCSc CRYPTCE	All (28,026)	2,294	2,076	0.015	0.012	0.212	0.017	0.013	0.192
CCSp Crypto	Non-AF (3,869)	1,096	972	0.035	0.020	0.090	0.029	0.022	0.195
CCSp Crypto	All (28,026)	1,096	972	0.019	0.016	0.258	0.021	0.018	0.245
TOAST UNDETER	Non-AF (3,869)	3,479	3,216	0.033	0.013	0.015	0.028	0.014	0.055
TOAST UNDETER	All (28,026)	3,479	3,216	0.021	0.010	0.027	0.022	0.011	0.042
<i>Results after standardizing PRS to a z-score</i>									
CCSc UNDETER	Non-AF (3,869)	4,574	4,169	0.071	0.025	<b>0.004</b>	0.061	0.027	0.022
CCSc UNDETER	All (28,026)	4,574	4,169	0.041	0.017	0.013	0.041	0.019	0.030
CCSc INCUNC	Non-AF (3,869)	2,280	2,093	0.090	0.030	<b>0.003</b>	0.088	0.034	0.010
CCSc INCUNC	All (28,026)	2,280	2,093	0.055	0.023	0.015	0.056	0.025	0.025
CCSc CRYPTCE	Non-AF (3,869)	2,294	2,076	0.059	0.030	0.051	0.051	0.033	0.124
CCSc CRYPTCE	All (28,026)	2,294	2,076	0.028	0.023	0.212	0.033	0.025	0.192
CCSp Crypto	Non-AF (3,869)	1,096	972	0.068	0.040	0.090	0.057	0.044	0.195
CCSp Crypto	All (28,026)	1,096	972	0.036	0.032	0.258	0.041	0.035	0.245
TOAST UNDETER	Non-AF (3,869)	3,479	3,216	0.064	0.026	0.015	0.054	0.028	0.055
TOAST UNDETER	All (28,026)	3,479	3,216	0.042	0.019	0.027	0.042	0.021	0.042

UNDETER, undetermined; INCUNC, incomplete and unclassified; CRYPTCE, cryptogenic and CE minor; Crypto, cryptogenic

**Supplementary Table 6 | Sensitivity analysis for the atrial fibrillation polygenic risk score.** As a sensitivity analysis for the polygenic risk score (PRS), we constructed 3 additional PRSs, including SNPs +/- 25kb, +/- 50kb, and +/- 100kb from the SNPs included in the original score. All scores remain highly significant when tested for association with cardioembolic stroke (using a logistic regression model). P-values after additionally adjusting for clinical covariates are also shown. Clinical covariates: age, cardiovascular disease, type 2 diabetes status, smoking status, and hypertension.

PCs, principal components; MAF, minor allele frequency; INFO, imputation (info) score.

PRS SNPs	Filters	Total SNPs	PRS p-value	
			<i>Adjusted for PCs, sex</i>	<i>Adjusted for PCs, sex, clinical covariates</i>
Original SNPs	MAF > 1% Info > 0.8	975	$1.01 \times 10^{-65}$	$1.44 \times 10^{-48}$
Original SNPs +/- 25kb	MAF > 1% Info > 0.8	146,631	$9.13 \times 10^{-50}$	$1.32 \times 10^{-37}$
Original SNPs +/- 50kb	MAF > 1% Info > 0.8	258,870	$5.76 \times 10^{-48}$	$1.40 \times 10^{-36}$
Original SNPs +/- 100kb	MAF > 1% Info > 0.8	462,146	$4.47 \times 10^{-44}$	$1.77 \times 10^{-32}$

**Supplementary Table 7 | Clinical covariates available in the SiGN data.** We adjusted our analyses of a polygenic risk score for a series of clinical covariates that are associated with atrial fibrillation. Summary-statistics on these covariates are shown below for those samples classified as (a) cardioembolic stroke or (b) undetermined stroke. The number of samples with missing data are provided in parentheses where relevant.

### *Cardioembolic*

Phenotype	CCS Causative	CCS Phenotypic	TOAST
Female	1,588	1,859	1,618
Male	1,247	1,541	1,520
Age: mean (sd)	74.7 (12.4)	74.5 (12.3)	71.0 (15.1)
Hypertensive (missing)	2,195 (18)	2,665 (21)	2,272 (16)
Diabetes mellitus (missing)	763 (26)	950 (29)	799 (8)
CAD (missing)	989 (64)	1206 (83)	911 (119)
Smoking			
Current	379	468	513
Former	694	865	776
Never	1,737	2,055	1,905
Total	3,000	3,608	3,333

### *Undetermined*

Phenotype	CCS Causative	CCS Causative	CCS Causative	CCS Phenotypic	TOAST
Female	1,880	1,024	856	420	1,445
Male	2,151	1,014	1,137	543	1,635
Age: mean (sd)	63.9 (15.4)	67.7 (13.9)	69.0 (15.9)	58.9 (15.7)	63.7 (16.1)
Hypertensive (missing)	2,833 (23)	1,512 (14)	1,321 (9)	612 (3)	2,110 (29)
Diabetes mellitus (missing)	958 (26)	513 (14)	445 (12)	202 (4)	708 (25)
CAD (missing)	739 (169)	421 (86)	318 (83)	115 (46)	573 (100)
Smoking					
Current	1,090	582	508	239	813
Former	1,050	516	534	235	772
Never	2,202	1,081	1,121	548	1,711
Total	4,574	2,280	2,294	1,096	3,479

**Supplementary Table 8: Variance explained by the atrial fibrillation polygenic risk score in cardioembolic stroke.** To determine the variance explained by the atrial fibrillation polygenic risk score (PRS) in cardioembolic stroke, we constructed a model in BOLT-LMM that consisted of two variance components: (1) a variance component made up of SNPs for the genetic relationship matrix, and (2) a variance component made up of SNPs from the PRS. After computing the estimated variance explained for each component in BOLT-LMM, we converted the estimate to the liability score. Below is variance explained for each of the cardioembolic stroke phenotypes as determined by the three subtyping systems available in SiGN: CCS Causative, CCS Phenotypic, and TOAST. Standard errors of each estimate appear in parentheses. Explained variance is shown for a PRS including the *PITX2* (chromosome 4) and *ZFHX3* (chromosome 16) loci, as well as excluding  $\pm 2\text{Mb}$  around these loci (see <https://github.com/UMCUGenetics/Afib-Stroke-Overlap> for lists of SNPs that fall in these regions). Because a large number of SNPs is needed to construct a variance component to calculate variance explained, we performed the calculation using the atrial fibrillation PRS including SNPs  $\pm 100\text{kb}$  from the original PRS SNPs, and then pruning SNPs a linkage disequilibrium of 0.2.

CE, cardioembolic; PRS, polygenic risk score; AF, atrial fibrillation

Subtyping System	$h_g^2$ CE stroke	$h_g^2$ atrial fibrillation PRS $\pm 100\text{kb}$	Proportion of CE $h_g^2$ explained by AF PRS
<i>PRS including the PITX2 and ZFHX3 loci</i>			
CCSc	0.195 (0.019)	0.045 (0.010)	23.1%
CCSp	0.164 (0.016)	0.040 (0.008)	24.4%
TOAST	0.210 (0.018)	0.051 (0.01)	24.3%
<i>PRS excluding the PITX2 and ZFHX3 loci</i>			
CCSc	0.195 (0.019)	0.037 (0.010)	19.0%
CCSp	0.164 (0.016)	0.032 (0.008)	19.5%
TOAST	0.210 (0.018)	0.044 (0.009)	21.0%

## Supplementary Methods

### ***GitHub repository and data availability***

#### *1. GitHub repository and additional supporting data*

*Relevant code for the analyses performed in this paper can be found here:*  
<https://github.com/saralpulit/Afib-Stroke-Overlap>.

This repository primarily consists of:

- Call to BOLT-LMM to run GWAS
- Call to GCTA and BOLT-LMM to calculate heritability
- Call to PLINK<sup>3,4</sup> to calculate the polygenic risk score (PRS)
- An R script for converting observed heritability in BOLT-LMM to the liability scale (see below)
- A script in R to check association between the PRS and various phenotypes.
- A call to PLINK<sup>3,4</sup> to calculate a GRM to run GCTA
- Sample identifiers for those individuals analyzed in this paper
- SNP identifiers and weights for those markers included in the construction of the polygenic risk score

A complete README accompanies the GitHub repository.

#### *2. Sample and SNP identifiers used in these analyses*

A file containing:

- the dbGaP sample identifiers
- the cohort the sample is drawn from
- the continental group the sample is in (as determined in the first SiGN GWAS effort<sup>5</sup>)
- a list of quality control-passing SNPs used in the initial GWAS

is available on this paper's GitHub repository.

#### *3. Downloadable summary-level genome-wide association study data*

The summary-level data from the original SiGN GWAS has been made publicly available through the Cerebrovascular Disease Knowledge Portal, which can be accessed here: <http://www.cerebrovascularportal.org/>

These summary-level results are available for cardioembolic stroke (CE), large artery atherosclerosis (LAA), small artery occlusion (SAO), and undetermined (UNDETER) stroke, for three different subtyping systems (TOAST, CCS Causative, CCS Phenotypic).

The summary-level results for the atrial fibrillation genome-wide association studies (performed in broadly-defined or strictly-defined cases versus all controls) are available here:

Broadly-defined atrial fibrillation cases vs. all referents:

<https://doi.org/10.5281/zenodo.1035871>

Strictly-defined atrial fibrillation cases vs. all referents:

<https://doi.org/10.5281/zenodo.1035873>

### ***The Stroke Genetics Network (SiGN) and genome-wide association study of ischemic stroke subtypes***

The full list of cohorts that are included in the SiGN genome-wide association study can be found in the Supplementary Material of "Loci associated with ischaemic stroke and its subtypes (SiGN): a genome-wide association study,"<sup>5</sup> which can be accessed here: <https://paperpile.com/shared/nvNXQf>.

SiGN is comprised of several case cohorts with pre-existing genotyping data. Newly-collected cases, as well as a small number of matched referents, were genotyped on the Illumina 5M array<sup>6</sup>. The majority of referents included were drawn from publicly-available genotyping data.

### 1. Referent (control) datasets

Referent datasets downloaded from the Database of Genotypes and Phenotypes (dbGaP) are:

	dbGAP accession #
Genetics Resource with the Health and Retirement Study	phs000428.v2.p2
Whole Genome Association Study of Visceral Adiposity in the HABC study	phs000169.v1.p1

### 2. Case datasets

A large number of cases and a small number of controls (from Belgium and Poland) were genotyped at the initiation of the SiGN GWAS. These data have been uploaded to dbGaP and are available here:

The National Institute of Neurological Disorders and Stroke (NINDS) Stroke Genetics Network (SiGN) (phs000615.v1.p1)

### 3. Phenotyping in SiGN

There are three primary subtype definitions of ischemic stroke: cardioembolic stroke, large artery atherosclerotic stroke, and small artery occlusion. The SiGN consortium used the CCS system to attempt to assign each case to one of these three categories. Additionally, ~74% of cases were also classified using the Trial of Org 10 172 in Acute Stroke Treatment (TOAST)<sup>7,8</sup> system, which classifies stroke cases based on clinical decision-making and clinically-ascertained information. The CCS and TOAST subtyping systems yield moderately-to-strongly correlated phenotyping results (**Supplementary Figure 5**)<sup>9</sup>. Use of these traits in a GWAS setting also yields concordant association results, as previously shown<sup>6</sup>. These subtypes are similarly defined in CCS and TOAST, though determined differently across the two subtyping systems.

In addition to the three primary subtypes, both the CCS and TOAST classification systems generate two additional subtypes: “undetermined” and “other.” The “other” classification was small in sample size ( $N_{\text{cases}} = 595, 719$  and  $374$  in CCS Causative, CCS Phenotypic and TOAST, respectively), and was therefore not included in the original SiGN GWAS and was not tested here<sup>6</sup>. The “undetermined” classification, though named the same in CCS and TOAST, is defined differently across the two subtyping systems<sup>8,10</sup>. In TOAST, patients with conflicting subtype classifications are



placed in the undetermined category<sup>6,8</sup>. In contrast, the CCS undetermined classification includes patients with cryptogenic embolism, other cryptogenic cases, patients with an incomplete evaluation, or samples with competing subtypes<sup>10</sup>.

#### *4. Brief summary of data quality control in SiGN*

SiGN samples represent three continental populations (European-ancestry; African-ancestry; and non-European ancestry and non-African ancestry samples, primarily of admixed ancestry from Latin American populations, labelled 'Hispanic'). In total, the study contains 13 case-referent analysis groups: 10 of European ancestry, two of African ancestry, and one Hispanic<sup>6</sup>.

For quality control (QC) and downstream association testing, cases and referents were matched by genotyping array and PCA-determined ancestry. European-ancestry samples were imputed with IMPUTE2<sup>11</sup> using a reference panel built from whole-genome sequence data collected by the 1000 Genomes Project (Phase 1)<sup>12</sup> and the Genome of the Netherlands<sup>13</sup> project; African-ancestry and Hispanic samples were imputed with the 1000 Genomes Project data only.<sup>12</sup> Due to data-sharing restrictions regarding the referents used for the Hispanic set of samples, only the European- and African-ancestry samples were analyzed here, totaling 13,390 cases and 28,026 referents distributed across 12 case-control analysis groups.

Before performing genome-wide association testing, for those SNPs that were genotyped in a subset of the SiGN study strata but imputed in others, we compared the frequency of the SNP across the various strata. We removed any SNP with a frequency difference > 15% within ancestral group or >50% across ancestral groups comparing imputed and genotyped data, likely induced by sequencing errors in the imputation reference panel(s).

#### ***Constructing a genetic relationship matrix for genome-wide association testing in BOLT-LMM***

To construct the genetic relationship matrix (GRM) implemented in BOLT-LMM, we used SNPs that were (i) common (MAF > 5%), (ii) with missingness < 5%, (iii) linkage disequilibrium (LD) pruned at an  $r^2$  threshold of 0.2, (iv) on the autosomal chromosomes only, (v) and not in stratified areas of the genome (i.e., not in the major histocompatibility complex (MHC), the inversions on chromosomes 8 and 17, or in the lactase (*LCT*) locus on chromosome 2). After association testing, we additionally removed SNPs with imputation quality (info score) < 0.8, due to excess inflation of the test statistic in those SNPs (**Supplementary Figure 1**).

#### ***Running a genome-wide association study using BOLT-LMM***

We implemented a linear mixed model to perform association testing using BOLT-LMM.<sup>14</sup> Linear mixed models can account for structure in the data, such as that due to (familial or cryptic) relatedness and population structure, while improving power for discovery.<sup>15–17</sup> Due to extensive structure in the SiGN data,<sup>6</sup> induced by both study design and population ancestry, we adjusted the BOLT-LMM model for the top ten principal components (PCs) and sex, in addition to the genetic relationship matrix used as a random effect in the linear mixed model.<sup>14</sup> We calculated PCs in EIGENSTRAT<sup>18</sup> using a similar set of SNPs to that used in the genetic relationship matrix but using a missingness threshold of 0.1%. To construct the GRM, we first identified the set of SNPs with imputation quality > 0.8 and MAF > 1%. More than 5.5M SNPs passed these QC criteria, so we randomly selected 20% of the data (~1.1M SNPs) for computational efficiency in calculating the GRM. We also identified SNPs outside the MHC and *LCT* regions, outside the inversions on chromosomes 8 and 17, and LD pruned ( $r^2 = 0.2$ ). These filtering steps resulted in ~250,000 SNPs available for the GRM. We used Plink 1.9<sup>3,4</sup> to convert imputed dosages to best-guess genotypes and then compute the GRM.

### ***SNP-based heritability calculations in GCTA and BOLT-LMM***

We used the GRM from our GWAS analyses (described in the section above) to estimate heritability. We adjusted all heritability analyses for 10 PCs and sex. To test the robustness of our heritability estimates, we calculated three additional GRMs to re-estimate heritability, and additionally estimated heritability using a second software (GCTA<sup>2</sup>).

To check the robustness of the heritability calculations to the SNPs included in the GRM, we calculated heritability using the GRM described above, as well as three additional GRMs: (i) using the ~1.1M SNPs with imputation quality > 0.8 and MAF > 1% (and without LD pruning); (ii) using the SNPs that were genotyped across all study strata (~155,000 SNPs); and (iii) the set of genotyped SNPs with the MHC, *LCT* locus, inversions on chromosomes 8 and 17 removed, and LD pruned at  $r^2 = 0.2$ .

Additionally, we computed heritability in GCTA<sup>2</sup> using the same GRMs and assuming a trait prevalence of 1%. We compared the results to the BOLT-based  $h_g^2$  estimates (**Supplementary Table 3** and **Supplementary Figures 2-3**). As genome-wide heritability estimates need a large number of SNPs to be accurate, we report in the paper all estimates using a GRM containing imputed, pruned SNPs. Estimates resulting from all GRMs are presented here, in the **Supplementary Information**.

To test the effect of changing the GRM (referred to by the --bfile and 'modelSNPs' option in BOLT-LMM), we selected SNPs for the GRM in four ways:

- (1) Genotyped SNPs only (minor allele frequency > 1%) (115,553 SNPs total)

- (2) Genotyped SNPs, pruned at a linkage disequilibrium threshold ( $r^2$  threshold) of 0.2, and removing the MHC, *LCT* locus, and two chromosomal inversions. (60,432 SNPs total)
- (3) Imputed SNPs (minor allele frequency > 1% and imputation info > 0.8) converted to best-guess genotypes. (1,128,985 SNPs total)
- (4) Imputed SNPs (minor allele frequency > 1% and imputation info > 0.8); pruned at a linkage disequilibrium threshold ( $r^2$  threshold) of 0.2; removing the MHC, *LCT* locus, and two chromosomal inversions; and converted to best-guess genotypes. (250,209 SNPs total)

The GRM in (4) is the GRM used for all heritability results presented in the main manuscript.

As calculating GRMs in GCTA can be extremely computationally intensive, we calculated the GRMs using PLINK 1.9 and then used those GRMs to estimate heritability. A script that shows how to do this is included in the GitHub repository noted above.

The genomic locations (hg19) for excluded markers are as follows:

The lactase ( <i>LCT</i> ) locus	Chromosome 2 positions 129,883,530 - 140,283,530
The major histocompatibility complex (MHC)	Chromosome 6 positions 24,092,021 - 38,892,022
Inversion 1	Chromosome 8 positions 6,612,592 - 13,455,629
Inversion 2	Chromosome 17 positions 40,546,474 - 44,644,684
All non-autosomal SNPs	--

BOLT-LMM produces heritability estimates on the observed scale. To convert to the liability scale (i.e., the scale on which GCTA produces heritability estimates) we performed a conversion in R. Running the conversion requires knowing the trait prevalence, total cases analyzed, total controls analyzed, and the heritability on the observed scale. This code snippet is available in the accompanying GitHub repository for this paper.

### ***Quality control in genome-wide data for correlation calculations***

We used summary-level data from the latest Atrial Fibrillation Genetics (AFGen) Consortium meta-analysis of atrial fibrillation<sup>1</sup> to calculate a z-score for each SNP in that GWAS. Additionally, we calculated a z-score for each SNP in a GWAS of each stroke subtype in SiGN as well as in the GWAS of atrial fibrillation we performed in the SiGN data. Finally, as a null comparator, we downloaded SNP z-scores from a GWAS of educational attainment<sup>19</sup> available through LDHub (<http://ldsc.broadinstitute.org/>, accessed 11-1-2017). We aligned z-score signs based on the risk allele reported in each study. SNPs with an allele frequency difference >5% between AFGen and SiGN (all stroke analysis) were removed from the AFGen data (25,784 SNPs); similarly, SNPs with an allele frequency difference >5% between the educational attainment GWAS and SiGN (all stroke) were also removed (27,866 SNPs). Finally, we calculated Pearson's r between z-scores from two traits to evaluate correlation.

### ***Constructing an atrial fibrillation polygenic risk score***

To construct an atrial fibrillation polygenic risk score (PRS), we used SNPs from a previously-derived atrial fibrillation PRS.<sup>20</sup> Briefly, the PRS was derived using results from a recent GWAS of atrial fibrillation, comprised of 17,931 cases and 115,142 referents<sup>1</sup> and testing various sets of SNPs based on their p-value from that GWAS (varying from  $p < 5 \times 10^{-8}$  to  $p < 0.001$ ) and using varied linkage disequilibrium thresholds (0.1 - 0.9).<sup>20</sup> These sets of SNPs were used to generate various PRSs, which were then independently tested for association to atrial fibrillation in an independent sample from the UK Biobank; the best-performing PRS (defined as the PRS with the lowest Akaike's Information Criterion) comprised 1,168 SNPs with  $p < 1 \times 10^{-4}$  in the atrial fibrillation GWAS and LD pruned at an  $r^2$  threshold of 0.5.<sup>20</sup>

Of these 1,168 SNPs, we identified 934 SNPs in the SiGN dataset with imputation info > 0.8 and MAF > 1%. We used these 934 SNPs to construct the atrial fibrillation PRS in the SiGN dataset by weighting the imputed number of risk-increasing alleles carried by an individual at a given SNP (i.e., 0-2 risk-increasing alleles) and then weighting the dosage by the effect of the allele, as determined by the most recent GWAS.<sup>1</sup> We computed the final PRS for each individual by summing across all of the weighted genotypes and performed association testing in R.

We calculated the odds ratio of the PRS for an increase of one standard deviation in the score by first converting the PRS per individual to a z-score, where:

$$PRS_{z\text{-score}} = \frac{PRS - \text{mean}(PRS)}{\text{standard deviation}(PRS)}$$

We then recalculated the association between  $PRS_{z\text{-score}}$  and the phenotype, and converted the resulting regression coefficients (i.e., betas) of the PRS to odds ratios.

To ensure that our analyses of the PRS were robust to ancestral heterogeneity, we additionally tested the PRS in the subset of European-ancestry samples only (the data were essentially identical to our finding in the complete sample and are therefore not provided).

## Supplementary Results

### ***Including age as a covariate in the GWAS of atrial fibrillation***

To check for the effects of age on our initial GWAS findings, we ran a GWAS of atrial fibrillation including age as a covariate. Controls without age information were dropped from this analysis. Given the structure of the SiGN dataset -- which includes groups of cases and controls that have been carefully matched on genotyping array and ancestry -- we also dropped the cases for which their matched controls were missing age information.

Our age-adjusted analysis included 2,487 atrial fibrillation cases and 22,072 controls. We performed the GWAS in BOLT-LMM, adjusting for 10 PCs, sex and age. We then checked the correlation between the SNP effects (betas) from the GWAS unadjusted for age and the SNP effects from the GWAS adjusted for age. Correlation was strong ( $r = 0.83$ ).

## Appendix I

### Members of the Atrial Fibrillation Genetics (AFGen) Consortium

Please note that the AFGen Consortium participants evolve over time. Further information on the AFGen Consortium can be found at [www.afgen.org](http://www.afgen.org).

Ingrid E. Christophersen, MD, PhD<sup>1-3</sup>  
 Michiel Rienstra, MD, PhD<sup>4</sup>  
 Carolina Roselli, MSc<sup>1,5,6</sup>  
 Xiaoyan Yin, PhD<sup>7,8</sup>  
 Bastiaan Geelhoed, PhD<sup>4</sup>  
 John Barnard, PhD<sup>9</sup>  
 Honghuang Lin, PhD<sup>7,8</sup>  
 Dan E. Arking, PhD<sup>10</sup>  
 Albert V. Smith, PhD<sup>11,12</sup>  
 Christine M. Albert, MD, MPH<sup>13</sup>  
 Mark Chaffin, MSc<sup>1</sup>  
 Nathan R. Tucker, PhD<sup>1,2</sup>  
 Molong Li, MD<sup>2</sup>  
 Derek Klarin, MD<sup>1</sup>  
 Nathan A. Bihlmeyer, BS,<sup>14</sup>  
 Siew-Kee Low, PhD<sup>15</sup>  
 Peter E. Weeke, MD, PhD<sup>16,17</sup>  
 Martina Müller-Nurasyid, PhD<sup>5,18,19</sup>  
 J. Gustav Smith, MD, PhD<sup>1,20</sup>  
 Jennifer A. Brody, BA<sup>21</sup>  
 Maartje N. Niemeijer MD<sup>22</sup>  
 Marcus Dörr, MD<sup>23,24</sup>  
 Stella Trompet, PhD<sup>25</sup>  
 Jennifer Huffman, PhD<sup>26</sup>  
 Stefan Gustafsson, PhD<sup>27</sup>  
 Claudia Schurmann, PhD<sup>28,29</sup>  
 Marcus E. Kleber, PhD<sup>30</sup>  
 Leo-Pekka Lyytikäinen, MD<sup>31</sup>  
 Ilkka Seppälä, MD<sup>31</sup>  
 Rainer Malik, PhD<sup>32</sup>  
 Andrea R. V. R. Horimoto, PhD<sup>33</sup>  
 Marco Perez, MD<sup>34</sup>  
 Juha Sinisalo, MD, PhD<sup>35</sup>  
 Stefanie Aeschbacher, MSc<sup>36,37</sup>  
 Sébastien Thériault, MD, MSc<sup>38,39</sup>  
 Jie Yao, MS<sup>40</sup>  
 Farid Radmanesh, MD, MPH<sup>1,41</sup>  
 Stefan Weiss, PhD<sup>24,42</sup>  
 Alexander Teumer, PhD<sup>24,43</sup>  
 Seung Hoan Choi, PhD<sup>1</sup>  
 Lu-Chen Weng, PhD<sup>1,2</sup>  
 Sebastian Clauss, MD<sup>2,18</sup>  
 Rajat Deo, MD, MTR<sup>44</sup>  
 Daniel J. Rader, MD<sup>44</sup>  
 Svati Shah, MD, MHS,<sup>45</sup>  
 Albert Sun, MD<sup>45</sup>  
 Jemma C. Hopewell, PhD<sup>46</sup>  
 Stephanie Debette, MD, PhD<sup>47-50</sup>  
 Ganesh Chauhan, PhD<sup>47,48</sup>  
 Qiong Yang, PhD<sup>51</sup>  
 Bradford B. Worrall, MD, MSc<sup>52</sup>  
 Guillaume Paré, MD, MSc<sup>38,39</sup>  
 Yoichiro Kamatani, MD, PhD<sup>15</sup>  
 Yanick P. Hagemeijer, MSc<sup>4</sup>  
 Niek Verweij, PhD<sup>4</sup>  
 Joylene E. Siland, BSc,<sup>4</sup>  
 Michiaki Kubo, MD, PhD<sup>53</sup>  
 Jonathan D. Smith, PhD<sup>9</sup>  
 David R. Van Wagoner, PhD<sup>9</sup>  
 Joshua C. Bis, PhD<sup>21</sup>  
 Siegfried Perz, MSc<sup>54</sup>  
 Bruce M. Psaty, MD, PhD<sup>21,55-57</sup>  
 Paul M. Ridker, MD, MPH<sup>13</sup>  
 Jared W. Magnani, MD, MSc<sup>7,58</sup>  
 Tamara B. Harris, MD, MS<sup>59</sup>  
 Lenore J. Launer, PhD<sup>59</sup>  
 M. Benjamin Shoemaker, MD, MSCI<sup>16</sup>  
 Sandosh Padmanabhan, MD<sup>60</sup>  
 Jeffrey Haessler, MS<sup>61</sup>  
 Traci M. Bartz, MS<sup>62</sup>  
 Melanie Waldenberger, PhD<sup>19,54,63</sup>  
 Peter Lichtner, PhD<sup>64</sup>  
 Marina Arendt, MSc<sup>65</sup>  
 Jose E. Krieger, MD, PhD<sup>33</sup>  
 Mika Kähönen, MD, PhD<sup>66</sup>  
 Lorenz Risch, MD, MPH<sup>67</sup>  
 Alfredo J. Mansur, MD, PhD<sup>68</sup>  
 Annette Peters, PhD<sup>19,54,69</sup>  
 Blair H. Smith, MD<sup>70</sup>  
 Lars Lind, MD, PhD<sup>71</sup>  
 Stuart A. Scott, PhD<sup>72</sup>  
 Yingchang Lu, MD, PhD<sup>28,29</sup>  
 Erwin B. Bottinger, MD<sup>28,73</sup>  
 Jussi Hernesniemi, MD, PhD<sup>31,74</sup>  
 Cecilia M. Lindgren, PhD<sup>75</sup>  
 Jorge A Wong, MD<sup>76</sup>  
 Jie Huang, MD, MPH<sup>77</sup>  
 Markku Eskola, MD, PhD<sup>74</sup>  
 Andrew P. Morris, PhD<sup>75,78</sup>  
 Ian Ford, PhD<sup>79</sup>  
 Alex P. Reiner, MD, MSc<sup>61,80</sup>  
 Graciela Delgado, MSc<sup>30</sup>  
 Lin Y. Chen, MD, MS<sup>81</sup>  
 Yii-Der Ida Chen, PhD<sup>40</sup>  
 Roopinder K. Sandhu, MD, MPH<sup>82</sup>  
 Man Li, PhD<sup>83,84</sup>  
 Eric Boerwinkle, PhD<sup>85</sup>  
 Lewin Eisele, MD<sup>65</sup>  
 Lars Lannfelt, MD, PhD<sup>86</sup>  
 Natalia Rost, MD, MPH, FAAN,<sup>1,87</sup>  
 Christopher D. Anderson, MD, MMS<sup>1,41</sup>  
 Kent D. Taylor, PhD<sup>40</sup>  
 Archie Campbell, MA,<sup>88</sup>  
 Patrik K. Magnusson, PhD<sup>89</sup>  
 David Porteous, PhD<sup>88</sup>  
 Lynne J. Hocking, PhD<sup>90</sup>  
 Efthymia Vlachopoulou, PhD<sup>91</sup>  
 Nancy L. Pedersen, MA, PhD<sup>89</sup>  
 Kjell Nikus, MD, PhD<sup>74</sup>  
 Marju Orho-Melander, PhD<sup>92</sup>  
 Anders Hamsten, MD, PhD<sup>93</sup>  
 Jan Heeringa, MD, PhD<sup>22</sup>  
 Joshua C. Denny, MD<sup>16</sup>  
 Jennifer Kriebel, PhD<sup>54,63,69</sup>  
 Dawood Darbar, MD<sup>94</sup>  
 Christopher Newton-Cheh, MD, MPH<sup>1,2</sup>  
 Christian Shaffer, BS,<sup>16</sup>  
 Peter W. Macfarlane, PhD, DSc<sup>95</sup>  
 Stefanie Heilmann, PhD<sup>96,97</sup>  
 Peter Almgren, MSc<sup>92</sup>  
 Paul L. Huang, MD, PhD<sup>2</sup>  
 Nona Sotoodehnia, MD, MPH<sup>98</sup>  
 Elsayed Z. Soliman, MD, MSc, MS<sup>99</sup>  
 Andre G. Uitterlinden, PhD<sup>100</sup>  
 Albert Hofman, MD, PhD<sup>22</sup>  
 Oscar H. Franco, MD, PhD<sup>22</sup>  
 Uwe Völker, PhD<sup>24,42</sup>  
 Karl-Heinz Jöckel, PhD<sup>65</sup>  
 Moritz F. Sinner, MD, MPH<sup>18,19</sup>  
 Henry J. Lin, MD<sup>40</sup>  
 Xiuqing Guo, PhD<sup>40</sup>  
 Martin Dichgans, MD<sup>32,101,102</sup>  
 Erik Ingelsson, MD, PhD<sup>27,103</sup>  
 Charles Kooperberg, PhD<sup>61</sup>  
 Olle Melander, MD, PhD<sup>104</sup>  
 Ruth J. F. Loos, PhD<sup>28,29,105</sup>  
 Jari Laurikka, MD, PhD<sup>106</sup>  
 David Conen, MD, MPH<sup>36-38</sup>  
 Jonathan Rosand, MD, MSc<sup>1,41</sup>  
 Pim van der Harst, MD, PhD<sup>4</sup>  
 Marja-Liisa Lokki, PhD<sup>91</sup>  
 Sekar Kathiresan, MD<sup>1</sup>  
 Alexandre Pereira, MD, PhD<sup>107</sup>  
 J. Wouter Jukema, MD, PhD<sup>25,108,109</sup>  
 Caroline Hayward, PhD<sup>26</sup>  
 Jerome I. Rotter, MD<sup>110</sup>  
 Winfried März, MD<sup>111</sup>  
 Terho Lehtimäki, MD, PhD<sup>31</sup>  
 Bruno H. Stricker, MD, PhD<sup>112</sup>  
 Mina K. Chung, MD<sup>9</sup>  
 Stephan B. Felix, MD<sup>23,24</sup>  
 Vilmundur Gudnason, MD, PhD<sup>11,12</sup>  
 Alvaro Alonso, MD, PhD<sup>113</sup>  
 Dan M. Roden, MD<sup>16</sup>  
 Stefan Kääb, MD, PhD<sup>18,19</sup>  
 Daniel I. Chasman, PhD<sup>1,114</sup>  
 Susan R. Heckbert, MD, PhD<sup>55,56</sup>  
 Emelia J. Benjamin, MD, ScM<sup>7,58,115</sup>  
 Toshihiro Tanaka, MD, PhD<sup>116,117</sup>  
 Kathryn L. Lunetta, PhD<sup>7,8</sup>  
 Steven A. Lubitz, MD, MPH<sup>1,2,118</sup>  
 Patrick T. Ellinor, MD, PhD<sup>1,2,118</sup>

#### AFGen Consortium Member Affiliations

1. Program in Medical and Population Genetics, The Broad Institute of MIT and Harvard, Cambridge, MA, USA.
2. Cardiovascular Research Center, Massachusetts General Hospital, Boston, MA, USA.
3. Department of Medical Research, Bærum Hospital, Vestre Viken Hospital Trust, Norway.
4. Department of Cardiology, University of Groningen, University Medical Center Groningen, Groningen, The Netherlands.
5. Institute of Genetic Epidemiology, Helmholtz Zentrum München - German Research Center for Environmental Health, Neuherberg, Germany.
6. Institute of Medical Informatics, Biometry and Epidemiology, Chair of Genetic Epidemiology, Ludwig-Maximilians-Universität, Munich, Germany.
7. NHLBI and Boston University's Framingham Heart Study, Framingham, MA, USA.
8. Department of Biostatistics, Boston University School of Public Health, Boston, MA, USA.
9. Departments of Cardiovascular Medicine, Cellular and Molecular Medicine, Molecular Cardiology, and Quantitative Health Sciences, Cleveland Clinic, Cleveland, OH, USA.
10. McKusick-Nathans Institute of Genetic Medicine, Johns Hopkins University School of Medicine, Baltimore, MD, USA.
11. Icelandic Heart Association, Kopavogur, Iceland.
12. Faculty of Medicine, University of Iceland, Reykavik, Iceland.
13. Divisions of Preventive and Cardiovascular Medicine, Brigham and Women's Hospital & Harvard Medical School, Boston, MA, USA.
14. Predoctoral Training Program in Human Genetics, McKusick-Nathans Institute of Genetic Medicine, Johns Hopkins University School of Medicine, Baltimore, MD, USA.
15. Laboratory for Statistical Analysis, RIKEN Center for Integrative Medical Sciences, Yokohama, Japan.
16. Department of Medicine, Vanderbilt University Medical Center, Nashville, TN, USA.
17. The Heart Centre, Department of Cardiology, Copenhagen University Hospital, Rigshospitalet, Copenhagen, Denmark.
18. Department of Medicine I, University Hospital Munich, Ludwig-Maximilians-University, Munich, Germany.
19. DZHK (German Centre for Cardiovascular Research), partner site: Munich Heart Alliance, Munich, Germany.
20. Molecular Epidemiology and Cardiology, Clinical Sciences, Lund University, Lund, Sweden.
21. Cardiovascular Health Research Unit, Department of Medicine, University of Washington, Seattle, WA, USA.
22. Department of Epidemiology, Erasmus University Medical Center Rotterdam, Rotterdam, the Netherlands.
23. Department of Internal Medicine B, University Medicine Greifswald, Greifswald, Germany.
24. DZHK (German Centre for Cardiovascular Research), partner site: Greifswald, Germany.
25. Department of Cardiology, Leiden University Medical Center, The Netherlands.
26. MRC Human Genetics Unit, Institute of Genetics and Molecular Medicine, University of Edinburgh, UK.
27. Department of Medical Sciences, Molecular Epidemiology and Science for Life Laboratory, Uppsala University, Uppsala, Sweden.
28. The Charles Bronfman Institute for Personalized Medicine, Icahn School of Medicine at Mount Sinai, New York, NY, USA.
29. The Genetics of Obesity and Related Metabolic Traits Program, Icahn School of Medicine at Mount Sinai, New York, NY, USA.
30. Vth Department of Medicine, Medical Faculty Mannheim, Heidelberg University, Germany.
31. Department of Clinical Chemistry, Fimlab Laboratories and University of Tampere School of Medicine, Tampere, Finland.
32. Institute for Stroke and Dementia Research, Klinikum der Universität München, Ludwig-Maximilians-University, München, Germany.
33. Laboratory of Genetics and Molecular Cardiology, Heart Institute, University of Sao Paulo, Sao Paulo, Brazil.
34. Stanford University, Stanford, CA, USA.
35. Heart and Lung Center HUS, Helsinki University Central Hospital, Helsinki, Finland.
36. University Hospital Basel, Switzerland.
37. Cardiovascular Research Institute Basel, Switzerland.
38. Population Health Research Institute, Hamilton, Canada.
39. Department of Pathology and Molecular Medicine, McMaster University, Hamilton, Canada.
40. Institute for Translational Genomics and Population Sciences, Department of Pediatrics, LABioMed at Harbor-UCLA Medical Center, Torrance, CA, USA.
41. Center for Human Genetics Research, Massachusetts General Hospital, Boston, MA, USA.
42. Interfaculty Institute for Genetics and Functional Genomics, University Medicine and Ernst-Moritz-Arndt-University Greifswald, Greifswald, Germany.
43. Institute for Community Medicine, University Medicine Greifswald, Greifswald, Germany.
44. Division of Cardiovascular Medicine, Department of Medicine, Perelman School of Medicine at the University of Pennsylvania, Philadelphia, PA, USA.
45. Division of Cardiology, Department of Medicine, Duke University School of Medicine, Durham, NC, USA.
46. CTSU - Nuffield Department of Population Health, University of Oxford, Oxford, UK.
47. Inserm Center U1219 (Bordeaux Population Health Centre), Bordeaux, France.
48. University of Bordeaux, Bordeaux, France.



49. Department of Neurology, Bordeaux University Hospital, Bordeaux, France.
50. Department of Neurology, Boston University School of Medicine, Boston, MA, USA.
51. Biostatistics Department, School of Public Health, Boston University, Boston, MA, USA.
52. University of Virginia Health System, Departments of Neurology and Public Health Science, Charlottesville, VA, USA.
53. RIKEN Center for Integrative Medical Sciences, Yokohama, Japan.
54. Institute of Epidemiology II, Helmholtz Zentrum München - German Research Center for Environmental Health, Neuherberg, Germany.
55. Department of Epidemiology and Cardiovascular Health Research Unit, University of Washington, Seattle, WA, USA.
56. Group Health Research Institute, Group Health Cooperative, Seattle, WA, USA.
57. Department of Health Services, University of Washington, Seattle, WA, USA.
58. Department of Medicine, Boston University School of Medicine, Boston, MA, USA.
59. Laboratory of Epidemiology, Demography, and Biometry, National Institute on Aging, Bethesda, MD, USA.
60. Institute of Cardiovascular and Medical Sciences, BHF Glasgow Cardiovascular Research Centre, University of Glasgow, Glasgow, UK.
61. Fred Hutchinson Cancer Research Center, University of Washington, Seattle, WA, USA.
62. Cardiovascular Health Research Unit, Departments of Medicine and Biostatistics, University of Washington, Seattle, WA, USA.
63. Research unit of Molecular Epidemiology, Helmholtz Zentrum München - German Research Center for Environmental Health, Neuherberg, Germany.
64. Institute of Human Genetics, Helmholtz Zentrum München - German Research Center for Environmental Health, Neuherberg, Germany.
65. Institute for Medical Informatics, Biometry, and Epidemiology, University Hospital, University Duisburg-Essen, Germany.
66. Department of Clinical Physiology, Tampere University Hospital and University of Tampere School of Medicine, Tampere, Finland.
67. University Institute of Clinical Chemistry, University of Bern, Switzerland and labormedizinisches zentrum Dr. Risch, Schaan, Liechtenstein.
68. Heart Institute, University of Sao Paulo, Sao Paulo, Brazil.
69. German Center for Diabetes Research, Neuherberg, Germany.
70. Division of Population Health Sciences, University of Dundee, Scotland, UK.
71. Department of Medical Sciences, Cardiovascular Epidemiology, Uppsala University, Uppsala, Sweden.
72. Department of Genetics and Genomic Sciences, Icahn School of Medicine at Mount Sinai, New York, NY, USA.
73. Department of Pharmacology and Systems Therapeutics, Icahn School of Medicine at Mount Sinai, New York, NY, USA.
74. Department of Cardiology, Heart Hospital, Tampere University Hospital and University of Tampere School of Medicine, Tampere, Finland.
75. Wellcome Trust Centre for Human Genetics, University of Oxford, Oxford, UK.
76. Division of Cardiology, Hamilton Health Sciences, McMaster University, Hamilton, Ontario, Canada.
77. Boston VA Research Institute, Inc., Boston, MA, USA.
78. Department of Biostatistics, University of Liverpool, Liverpool, UK.
79. Robertson Center for Biostatistics, University of Glasgow, Glasgow, UK.
80. Department of Epidemiology, University of Washington, Seattle, WA, USA.
81. Cardiovascular Division, Department of Medicine, University of Minnesota Medical School, Minneapolis, MN, USA.
82. Division of Cardiology, University of Alberta, Edmonton, Canada.
83. Department of Epidemiology, Johns Hopkins University, Baltimore, MD, USA.
84. Division of Nephrology & Hypertension, Internal Medicine, School of Medicine, University of Utah, UT, USA.
85. Human Genome Sequencing Center, Baylor College of Medicine, Houston, TX, USA.
86. Department of Public Health and Caring Sciences, Geriatrics, Uppsala University, Uppsala, Sweden.
87. Acute Stroke Services, Massachusetts General Hospital, Boston, MA, USA.
88. Generation Scotland, Centre for Genomic and Experimental Medicine, Institute of Genetics and Molecular Medicine, University of Edinburgh, UK.
89. Department of Medical Epidemiology and Biostatistics, Karolinska Institutet, Stockholm, Sweden.
90. Musculoskeletal Research Programme, Division of Applied Medicine, University of Aberdeen, Aberdeen, UK.
91. Transplantation Laboratory, Medicum, University of Helsinki, Helsinki, Finland.
92. Department of Clinical Sciences, Lund University, Malmö, Sweden.
93. Cardiovascular Genetics and Genomics Group, Atherosclerosis Research Unit, Department of Medicine Solna, Karolinska Institutet, Stockholm, Sweden.
94. University of Illinois, Chicago, IL, USA.
95. Institute of Health and Wellbeing, College of Medical, Veterinary and Life Sciences, University of Glasgow, UK.
96. Institute of Human Genetics, University of Bonn, Germany.
97. Department of Genomics, Life & Brain Research Center, University of Bonn, Germany.

98. Cardiovascular Health Research Unit, University of Washington Medical Center, Seattle, WA, USA.
99. Epidemiological Cardiology Research Center (EPICARE), Wake Forest School of Medicine, Winston Salem, NC, USA.
100. Department of Epidemiology and Internal Medicine, Erasmus University Medical Center Rotterdam, the Netherlands.
101. Munich Cluster for Systems Neurology (SyNergy), München, Germany.
102. German Center for Neurodegenerative Diseases (DZNE), Munich, Germany.
103. Department of Medicine, Division of Cardiovascular Medicine, Stanford University School of Medicine, Stanford, CA, USA.
104. Department of Internal Medicine, Clinical Sciences, Lund University, Malmö, Sweden.
105. The Mindich Child Health and Development Institute, Icahn School of Medicine at Mount Sinai, New York, NY, USA.
106. Department of Cardio-Thoracic Surgery, Heart Hospital, Tampere University Hospital and University of Tampere School of Medicine, Tampere, Finland.
107. Laboratory of Genetics and Molecular Biology, Heart Institute, University of Sao Paulo, Sao Paulo, Brazil and Department of Genetics, Harvard Medical School, Boston, MA, USA.
108. Durrer Center for Cardiogenetic Research, Amsterdam, The Netherlands.
109. Interuniversity Cardiology Institute of the Netherlands, Utrecht, The Netherlands.
110. Institute for Translational Genomics and Population Sciences, Departments of Pediatrics and Medicine, LABioMed at Harbor-UCLA Medical Center, Torrance, CA, USA.
111. Clinical Institute of Medical and Chemical Laboratory Diagnostics, Medical University of Graz, Graz, Austria and Synlab Academy, Synlab Services GmbH, Mannheim, Germany.
112. Department of Epidemiology and Internal Medicine, Erasmus University Medical Center Rotterdam, the Netherlands and Inspectorate of Health Care, Utrecht, the Netherlands.
113. Department of Epidemiology, Rollins School of Public Health, Emory University, Atlanta, GA, USA.
114. Divisions of Preventive Medicine and Genetics, Brigham and Women's Hospital & Harvard Medical School, Boston, MA, USA.
115. Department of Epidemiology, Boston University School of Public Health, Boston, MA, USA.
116. Laboratory for Cardiovascular Diseases, RIKEN Center for Integrative Medical Sciences, Yokohama, Japan.
117. Department of Human Genetics and Disease Diversity, Tokyo Medical and Dental University Graduate School of Medical and Dental Sciences, Tokyo, Japan.
118. Cardiac Arrhythmia Service, Massachusetts General Hospital, Boston, MA, USA.

## Appendix II

### Members of the International Stroke Genetics Consortium (ISGC)

Please note that ISGC participants evolve over time. Further information on the ISGC can be found at <http://www.strokegenetics.org/>.

Sylvia Smoller, PhD <sup>1</sup>	Joanna Pera, MD <sup>29</sup>	Andreas Gschwendtner, MD, PhD <sup>35</sup>
John Sorkin, MD <sup>2</sup>	Agnieszka Slowik, MD <sup>29</sup>	Zhen Deng, MD <sup>49</sup>
Xingwu Wang, MD <sup>3</sup>	Karol Jozef Juchniewicz, MD <sup>29</sup>	Taura Barr, MD <sup>50</sup>
Magdy Selim, MD, PhD <sup>4</sup>	Christopher Levi, MD <sup>30</sup>	Katrina Gwinn, MD <sup>50</sup>
Aleksandra Pikula, MD, PhD <sup>5</sup>	Paul Nyquist, MD, PhD <sup>31</sup>	Roderick Corriveau, MD <sup>50</sup>
Philip Wolf, MD, PhD <sup>5</sup>	Iscia Cendes, MD <sup>32</sup>	Andrew Singleton, MD, PhD <sup>50</sup>
Stephanie Debette, MD <sup>5</sup>	Norberto Cabral, MD <sup>32</sup>	Salina Waddy, MD <sup>50</sup>
Sudha Seshadri, MD <sup>5</sup>	Paulo Franca, MD <sup>32</sup>	Lenore Launer, MD <sup>50</sup>
Paul de Bakker, PhD <sup>6</sup>	Anderson Goncalves, MD <sup>32</sup>	Christopher Chen, MD <sup>51</sup>
Sara L. Pulit, PhD <sup>6</sup>	Lina Keller, MD <sup>33</sup>	Kim En Le, MD <sup>51</sup>
Daniel Chasman, MD <sup>7</sup>	Milita Crisby, MD <sup>33</sup>	Wei Ling Lee, MD <sup>51</sup>
Kathryn Rexrode, MD <sup>7</sup>	Konstantinos Kostulas, MD <sup>33</sup>	Eng King Tan, MD <sup>51</sup>
Ida Chen, MD <sup>8</sup>	Robin Lemmens, MD <sup>34</sup>	Akintomi Olugbodi, MD <sup>52</sup>
Jerome Rotter, MD <sup>8</sup>	Kourosh Ahmadi, MD <sup>34</sup>	Peter Rothwell, MD, PhD <sup>53</sup>
May Luke, MD <sup>9</sup>	Christian Opherke, MD <sup>35</sup>	Sabrina Schilling, MD <sup>54</sup>
Michelle Sale, MD <sup>10</sup>	Marco Duering, MD <sup>35</sup>	Vincent Mok, MD <sup>55</sup>
Tsong-Hai Lee, MD <sup>11</sup>	Martin Dichgans, MD <sup>35</sup>	Elena Lebedeva, MD <sup>56</sup>
Ku-Chou Chang, MD <sup>11</sup>	Rainer Malik, PhD <sup>35</sup>	Christina Jern, MD <sup>57</sup>
Mitchell Elkind, MD, MS <sup>12</sup>	Mariya Gonik, MD <sup>35</sup>	Katarina Jood, MD <sup>57</sup>
Larry Goldstein, MD, PhD <sup>13</sup>	Julie Staals, MD <sup>36</sup>	Sandra Olsson, MD <sup>57</sup>
Michael Luke James, MD <sup>13</sup>	Olle Melander, MD, PhD <sup>37</sup>	Helen Kim, MD <sup>58</sup>
Monique Breteler, MD <sup>14</sup>	Philippe Burri, MD <sup>37</sup>	Chaeyoung Lee, MD <sup>59</sup>
Chris O'Donnell, MD <sup>15</sup>	Ariane Sadr-Nabavi, MD <sup>38</sup>	Laura Kilarski, MD <sup>60</sup>
Didier Leys, MD <sup>16</sup>	Javier Romero, MD, PhD <sup>39</sup>	Hugh Markus, MD <sup>60</sup>
Cara Carty, MD <sup>17</sup>	Alessandro Biffi, MD <sup>39</sup>	Jennifer Peycke, MD <sup>60</sup>
Chelsea Kidwell, MD <sup>18</sup>	Chris Anderson, MD <sup>39</sup>	Steve Bevan, PhD <sup>60</sup>
Jes Olesen, MD <sup>19</sup>	Guido Falcone, MD <sup>39</sup>	Wayne Sheu, MD <sup>61</sup>
Pankaj Sharma, MD, PhD <sup>20</sup>	Bart Brouwers, MD <sup>39</sup>	Hung Yi Chiou, MD <sup>62</sup>
Stephen Rich, MD, PhD <sup>21</sup>	Jonathan Rosand, MD, MSc <sup>39</sup>	Joseph Chern, MD <sup>62</sup>
Turgot Tatlisumak, MD <sup>22</sup>	Natalia Rost, MD, MSc <sup>39</sup>	Elias Giraldo, MD <sup>63</sup>
Olli Hapola, MD <sup>22</sup>	Rose Du, MD <sup>39</sup>	Muhammad Taqi, MD <sup>63</sup>
Philippe Bijlenga, MD <sup>23</sup>	Christina Kourkoulis, BA <sup>39</sup>	Vivek Jain, MD <sup>64</sup>
Carolina Soriano, MD <sup>24</sup>	Thomas Battey, BA <sup>39</sup>	Olivia Lam, MD <sup>65</sup>
Eva Giral, MD <sup>24</sup>	Steven Lubitz, MD, PhD <sup>39</sup>	George Howard, MD <sup>66</sup>
Jaume Roquer, MD <sup>24</sup>	Bertram Mueller-Myhsok, MD <sup>40</sup>	Daniel Woo, MD <sup>67</sup>
Jordi Jimenez-Conde, MD <sup>24</sup>	James Meschia, MD <sup>40</sup>	Steven Kittner, MD <sup>68</sup>
Ioana Cotlarcius, MD <sup>25</sup>	Thomas Brott, MD, PhD <sup>41</sup>	Braxton Mitchell, PhD, MPH <sup>68</sup>
John Hardy, MD <sup>26</sup>	Guillaume Pare, MD <sup>42</sup>	John Cole, MD <sup>68</sup>
Michal Korostynski, MD <sup>27</sup>	Alexander Pichler, MD <sup>43</sup>	Jeff O'Connell, MD <sup>68</sup>
Giorgio Boncoraglio, MD <sup>28</sup>	Christian Enzinger, MD <sup>43</sup>	Dianna Milewicz, MD <sup>69</sup>
Elena Ballabio, MD <sup>28</sup>	Helena Schmidt, MD <sup>43</sup>	Kachikwu Illoh, MD <sup>70</sup>
Eugenio Parati, MD <sup>28</sup>	Reinhold Schmidt, MD <sup>43</sup>	Bradford Worrall, MD <sup>71</sup>
Adamski Mateusz, MD <sup>29</sup>	Stephan Seiler, MD <sup>43</sup>	Colin Stine, MD <sup>70</sup>
Andrzej Urbanik, MD <sup>29</sup>	Susan Blanton, MD <sup>44</sup>	Bartosz Karaszewski, MD <sup>71</sup>
Tomasz Dziedzic, MD <sup>29</sup>	Yoshiji Yamada, MD <sup>45</sup>	David Werring, MD <sup>71</sup>
Jeremiasz Jagiella, MD <sup>29</sup>	Anna Bersano, MD <sup>46</sup>	Reecha Sofat, MD <sup>71</sup>
Jerzy Gasowski, MD <sup>29</sup>	Tatjana Rundek, MD <sup>47</sup>	June Smalley, MD <sup>71</sup>
Marcin Wnuk, MD <sup>29</sup>	Ralph Sacco, MD <sup>47</sup>	Arne Lindgren, MD <sup>72</sup>
Rafael Olszanecki, MD <sup>29</sup>	Yu-Feng Yvonne Chan, MD <sup>48</sup>	Bjorn Hansen, BA <sup>72</sup>

Bo Norrving, MD <sup>72</sup>	Cathie Sudlow, MD <sup>83</sup>	Anne-Katrin Giese, MD <sup>93</sup>
Gustav Smith, MD <sup>72</sup>	Kristiina Rannikmae, MD <sup>83</sup>	Myriam Fornage, MD <sup>94</sup>
Juan Jose Martin, MD <sup>73</sup>	Scott Silliman, MD <sup>84</sup>	Jennifer Majersik, MD <sup>95</sup>
Vincent Thijs, MD <sup>74</sup>	Caitrin McDonough, MD <sup>84</sup>	Mary Cushman, MD <sup>96</sup>
Karin Klijn, MD <sup>75</sup>	Matthew Walters, MD <sup>85</sup>	Keith Keene, MD <sup>97</sup>
Femke van't Hof, MD, PhD <sup>75</sup>	Annie Pedersen, MD <sup>86</sup>	Siiri Bennett, MD <sup>98</sup>
Ale Algra, MD <sup>75</sup>	Kazuma Nakagawa, MD <sup>87</sup>	David Tirschwell, MD, MSc <sup>98</sup>
Mary Macleod, MD <sup>76</sup>	Christy Chang, MD <sup>88</sup>	Bruce Psaty, MD <sup>98</sup>
Rodney Perry, MD <sup>77</sup>	Mark Dobbins, MD <sup>88</sup>	Alex Reiner, MD <sup>98</sup>
Donna Arnett, MD <sup>77</sup>	Patrick McArdle, PhD <sup>88</sup>	Will Longstreth, MD <sup>99</sup>
Alessandro Pezzini, MD <sup>78</sup>	Yu-Ching Chang, MD <sup>88</sup>	David Spence, MD <sup>100</sup>
Alessandro Padovani, MD <sup>78</sup>	Robert Brown, MD <sup>89</sup>	Joan Montaner, MD <sup>101</sup>
Steve Cramer, MD, PhD <sup>79</sup>	Devin Brown, MD <sup>89</sup>	Israel Fernandez-Cadenas, MD <sup>102</sup>
Mark Fisher, MD <sup>79</sup>	Elizabeth Holliday, MD <sup>90</sup>	Carl Langefeld, MD <sup>102</sup>
Danish Saleheen, MD <sup>80</sup>	Raj Kalaria, MD <sup>91</sup>	Cheryl Bushnell, MD <sup>102</sup>
Joseph Broderick, MD <sup>81</sup>	Jane Maguire, MD <sup>91</sup>	Laura Heitsch, MD <sup>103</sup>
Brett Kissela, MD <sup>81</sup>	John Attia, MD <sup>91</sup>	Jin-Moo Lee, MD, PhD <sup>103</sup>
Alex Doney, MD <sup>82</sup>	Martin Farrall, MD <sup>92</sup>	Kevin Sheth, MD <sup>104</sup>

### ISGC Consortium Member Affiliations

1. Albert Einstein College of Medicine, Bronx, NY, USA
2. Baltimore VA Medical Center, Baltimore, MD, USA
3. Beijing Hypertension League Institute, Beijing, China
4. Beth Israel Deaconess Medical Center, Boston, MA, USA
5. Boston University Medical Center, Boston, MA, USA
6. University Medical Center Utrecht, Utrecht, The Netherlands
7. Brigham and Women's Hospital, Boston, MA, USA
8. Cedars Sinai Medical Center, Los Angeles, CA, USA
9. Celera, Alameda, CA, USA
10. University of Virginia, Charlottesville, VA, USA
11. Chang Gung Memorial Hospital, Linkou Medical Center, Guishan District, Taoyuan City, Taiwan
12. Columbia University, New York, NY, USA
13. Duke University, Durham, NC, USA
14. Erasmus University, Rotterdam, Zuid Holland, The Netherlands
15. Framingham Heart Study, Framingham, MA, USA
16. Université du Droit et de la Santé Lille, Lille, France
17. Fred Hutchinson Cancer Research Center, Seattle, WA, USA
18. Georgetown University, Georgetown, MD, USA
19. Glostrup Hospital, Glostrup, Denmark
20. Hammersmith Hospitals & Imperial College London, London, UK
21. University of Virginia Health System, Charlottesville, VA, USA
22. Helsinki University Central Hospital, Helsinki, Finland
23. Hôpitaux Universitaires de Genève, Geneva, Switzerland
24. IMIM-Hospital del Mar, Barcelona, Spain
25. Imperial College London, London, UK
26. Institute of Neurology, University College London, London, UK
27. Institute of Pharmacology, Krakow, Poland
28. IRCCS Istituto Neurologico Carlo Besta, Milan, Italy
29. Jagiellonian University, Krakow, Poland
30. John Hunter Hospital, University of Newcastle, Newcastle, New-South-Wales, Australia
31. Johns Hopkins School of Medicine, Baltimore, MD, USA
32. Joinville Biobank, Joinville, Brazil
33. Karolinska Institutet, Karolinska, Sweden
34. Leuven University, Leuven, Belgium
35. Ludwig-Maximilians-Universität, München, Germany

36. Maastricht University Medical Centre, Maastricht, the Netherlands
37. Malmo University Hospital, Malmo, Sweden
38. Mashhad University of Medical Sciences, Mashhad, Iran
39. Massachusetts General Hospital, Boston, MA, USA
40. Max Planck Institute of Psychiatry, Munich, Germany
41. Mayo Clinic, Rochester, MN, USA
42. McMaster University, Hamilton, Canada
43. Medical University Graz, Graz, Austria
44. Miami Institute of Human Genomics, University of Miami Miller School of Medicine, Miami, FL
45. Mie University, Tsu, Japan
46. Milan University, Milan, Italy
47. University of Miami, Miami, FL, USA
48. Mount Sinai Medical Center, Miami Beach, FL, USA
49. Nanfang Hospital, Southern Medical University, Guangdong, China
50. National Institutes of Health, Bethesda, MD, USA
51. National Neuroscience Institute, Singapore General Hospital, Singapore
52. Obafemi Awolowo University, Ile-Ife, Nigeria
53. Radcliffe Infirmary, Oxford University, Oxford, UK
54. University of Bordeaux, Bordeaux, France
55. Prince of Wales Hospital, The Chinese University of Hong Kong, Hong Kong
56. Ulm University, Ulm, Germany
57. Sahlgrenska University Hospital, Gothenburg, Sweden
58. Center for Cerebrovascular Research, San Francisco General Hospital, San Francisco, CA, USA
59. Soongsil University, Seoul, South Korea
60. St. George's University of London, London, UK
61. Taichung Veterans General Hospital, Taichung City, Taiwan
62. Taipei Medical University, Taipei City, Taiwan
63. The University of Tennessee Health Science Center at Memphis, Memphis, TN, USA
64. University of California Irvine Medical Center, Irvine, CA, USA
65. University of California San Francisco, San Francisco, CA, USA
66. University of Alabama School of Public Health
67. University of Cincinnati, Cincinnati, OH, USA
68. University of Maryland School of Medicine, Baltimore, MD, USA
69. University of Texas Medical School at Houston, Houston, TX, USA
70. University of Texas-Houston, Houston, TX, MA
71. University College London, London, UK
72. University Hospital Lund, Lund, Sweden
73. University Hospital Sanatorio Allende, Cordoba, Argentina
74. University Hospital Leuven, Leuven, Belgium
75. University Medical Center Utrecht, Utrecht, The Netherlands
76. University of Aberdeen, Aberdeen, Scotland
77. University of Alabama at Birmingham School of Public Health, Birmingham, AL, USA
78. University of Brescia, Brescia, Italy
79. University of California Irvine, Irvine, CA, USA
80. University of Pennsylvania, Philadelphia, PA, USA
81. University of Cincinnati, Cincinnati, OH, USA
82. University of Dundee, Dundee, Scotland
83. University of Edinburgh, Western General Hospital, Edinburgh, Scotland
84. University of Florida, Gainesville, FL, USA
85. University of Glasgow, Glasgow, Scotland, UK
86. University of Gothenburg, Gothenburg, Sweden
87. University of Hawaii, Honolulu, HI, USA
88. University of Maryland, Baltimore, MD, USA
89. University of Newcastle, New-South-Wales, Australia
90. Wellcome Trust Center for Human Genetics, University of Oxford, Oxford, UK
91. University of Rostock, Rostock, Germany
92. University of Texas-Houston, Health Sciences Center, Houston, TX, USA
93. University of Utah, Salt Lake City, UT, USA

94. University of Vermont and Fletcher Allen Health Care, Burlington, VT, USA
95. University of Virginia, Charlottesville, VA, USA
96. University of Washington, Seattle, WA, USA
97. University of Washington, Harborview Medical Center, Seattle, WA, USA
98. University of Western Ontario, Robarts Research Institute, Ontario, Canada
99. Vall d'Hebron Hospital, Barcelona, Spain
100. Wake Forest University, Winston-Salem, NC, USA
101. Washington University of St. Louis, St. Louis, MO, USA
102. Yale New Haven Hospital, Yale School of Medicine, Yale, CT, USA

## References

1. Christophersen IE, Rienstra M, Roselli C, et al. Large-scale analyses of common and rare variants identify 12 new loci associated with atrial fibrillation. *Nat Genet.* 2017;57:289.
2. Yang J, Lee SH, Goddard ME, Visscher PM. GCTA: A tool for genome-wide complex trait analysis. *Am J Hum Genet.* The American Society of Human Genetics; 2011;88:76–82.
3. Purcell S, Neale B, Todd-Brown K, et al. PLINK: a tool set for whole-genome association and population-based linkage analyses. *Am J Hum Genet.* 2007;81:559–575.
4. Chang CC, Chow CC, Tellier LC, Vattikuti S, Purcell SM, Lee JJ. Second-generation PLINK: rising to the challenge of larger and richer datasets. *Gigascience.* 2015;4:1–16.
5. NINDS Stroke Genetics Network (SiGN), International Stroke Genetics Consortium. Loci associated with ischaemic stroke and its subtypes (SiGN): a genome-wide association study. *Lancet Neurol.* Elsevier Ltd; 2015;15:4–7.
6. Pulit SL, McArdle PF, Wong Q, Malik R, Gwinn K, Achterberg S, Algra A, Amouyel P, Anderson CD, Arnett DK, Arsava EM, Attia J, Ay H, Bartz TM, Battey T, Benavente OR, Bevan S, Biffi A, Bis JC, Blanton SH, Boncoraglio GB, Brown Jr RD, Burgess AI, Carrera, Smith SNC, Chasman DI, Chauhan G, Chen WM, Cheng YC, Chong M, Cloonan LK, Cole JW, Cotlarciuc I, Cruchaga C, Cuadrado-Godia E, Dave T, Dawson J, Debette S, Delavaran H, Dell CA, Dichgans M, Doheny KF, Dong C, Duggan DJ, Engström G, Evans MK, Pallejà XE, Faul JD, Fernández-Cadenas I, Fornage M, Frossard PM, Furie K, Gamble DM, Gieger C, Giese AK, Giralt-Steinhauer E, González HM, Goris A, Gretarsdottir S, Grewal RP, Grittner R, Gustafsson S, Han B, Hankey GJ, Heitsch L, Higgins P, Hochberg MC, Holliday E, Hopewell EC, Horenstein RB, Howard G, Ikram MA, Ilinca A, Ingelsson E, Irvin MR, Jackson RD, Jern C, Conde JJ, Johnson JA, Jood K, Kahn MS, Kaplan R, Kappelle LJ, Kardia SLR, Keene KL, Kissela BM, O Kleindorfer D, Koblar S, Labovitz D, Launer LJ, Laurie CC, Laurie CA, Lee CH, Lee JM, Lehm M, Lemmens R, Levi C, Leys D, Lindgren A, Longstreth Jr WT, Maguire J, Manichaikul Ani, Markus HS, McClure LA, McDonough CW, Meisinger C, Melander O, Meschia JF, Mola-Caminal M, Montaner J, Mosley TH, Müller-Nurasyid M, Nalls MA, O'Connell JR, O'Donnell M, Ois A, Papanicolaou GJ, Paré G, Peddareddygar LR, Pedersén A, Pera J, Peters A, Poole D, Psaty BM, Rabionet R, Raffeld MR, Rannikmäe K, Rasheed A, Redfors P, Reiner AP, Rexrode K, Ribasés M, Rich SS, Robberecht W, Rodriguez-Campello A, Rolfs A, Roquer J, Rose LM, Rosenbaum D, Rost NS, Rothwell PM, Rundek T, Ryan KA, Sacco RL, Sale MM, Saleheen D, Salomaa V, Sánchez-Mora C, Schmidt CO, Schmidt H, Schmidt R, Schürks M, Scott R, Segal HC, Seiler S, Seshadri S, Sharma P, Shuldiner AR, Silver B, Slowik A, Smith JA, Söderholm M, Soriano C,

- Sparks MJ, Stanne T, Stefansson K, Stine OC, Strauch K, Sturm J, Sudlow CLM, Tajuddin SM, Talbert RL, Tatlisumak T, Thijs V, Thorleifsson G, Thorsteindottir U, Tiedt S, Traylor M, Trompet S, Valant V, Waldenberger M, Walters M, Wang L, Wassertheil-Smoller S, Weir DR, Wiggins KL, Williams SR, Wloch-Kopec D, Woo D, Woodfield D, Wu O, Xu H, Zonderman AB, Australian Stroke Genetics Consortium, Cervical Artery Dissection and Ischemic Stroke Patients (CADISP) study, Cohorts of Heart and Aging Research in Genomic Epidemiology (CHARGE) consortium, Consortium of Minority Population genome-wide Association Studies of Stroke (COMPASS), METASTROKE consortium, Wellcome Trust Case-Control Consortium, Worrall BB, de Bakker PIW, Kittner SJ, Mitchell BD, Rosand J. Loci associated with ischaemic stroke and its subtypes (SiGN): a genome-wide association study. *Lancet Neurology*. 2015;15:174–184.
7. Goldstein LB, Jones MR, Matchar DB, et al. Improving the reliability of stroke subgroup classification using the Trial of ORG 10172 in Acute Stroke Treatment (TOAST) criteria. *Stroke*. 2001;32:1091–1098.
  8. Adams HP Jr, Birgitte H. Bendixen P, Jaap Kappelle L, et al. Classification of Subtype of Acute Ischemic Stroke: Definitions for Use in a Multicenter Clinical Trial. *Stroke*. 1993;24:35–41.
  9. McArdle PF, Kittner SJ, Ay H, et al. Agreement between TOAST and CCS ischemic stroke classification: the NINDS SiGN study. *Neurology*. 2014;83:1653–1660.
  10. Ay H, Benner T, Arsava EM, et al. A computerized algorithm for etiologic classification of ischemic stroke: The causative classification of stroke system. *Stroke*. 2007;38:2979–2984.
  11. Howie B, Fuchsberger C, Stephens M, Marchini J, Abecasis GR. Fast and accurate genotype imputation in genome-wide association studies through pre-phasing. *Nat Genet*. Nature Publishing Group; 2012;44:955–959.
  12. Auton A, Abecasis GR, Altshuler DM, et al. A global reference for human genetic variation. *Nature*. 2015;526:68–74.
  13. Francioli LC, Menelaou A, Pulit SL, et al. Whole-genome sequence variation, population structure and demographic history of the Dutch population. *Nat Genet*. 2014;46:818–825.
  14. Loh P-R, Tucker G, Bulik-Sullivan BK, et al. Efficient Bayesian mixed-model analysis increases association power in large cohorts. *Nat Genet*. 2015;47:284–290.
  15. Lippert C, Listgarten J, Liu Y, Kadie CM, Davidson RI, Heckerman D. FaST linear mixed models for genome-wide association studies. *Nat Methods*. Nature Publishing Group; 2011;8:833–835.
  16. Widmer C, Lippert C, Weissbrod O, et al. Further improvements to linear mixed models for genome-wide association studies. *Sci Rep*. 2014;4:6874.



17. Yang J, Zaitlen NA, Goddard ME, Visscher PM, Price AL. Advantages and pitfalls in the application of mixed-model association methods. *Nat Genet.* 2014;46:100–106.
18. Price AL, Patterson NJ, Plenge RM, Weinblatt ME, Shadick NA, Reich D. Principal components analysis corrects for stratification in genome-wide association studies. *Nat Genet.* 2006;38:904–909.
19. Okbay A, Beauchamp JP, Fontana MA, et al. Genome-wide association study identifies 74 loci associated with educational attainment. *Nature*. Nature Publishing Group, a division of Macmillan Publishers Limited. All Rights Reserved.; 2016;533:539.
20. Weng L-C, Preis SR, Hulme OL, et al. Genetic Predisposition, Clinical Risk Factor Burden, and Lifetime Risk of Atrial Fibrillation. *Circulation* [online serial]. Epub 2017 Nov 12. Accessed at: <http://dx.doi.org/10.1161/CIRCULATIONAHA.117.031431>.