

# Huntington's disease age at motor onset is modified by the tandem hexamer repeat in *TCERG1*

Sergey V. Lobanov<sup>1</sup>, Branduff McAllister<sup>1</sup>, Mia McDade-Kumar<sup>1</sup>, G. Bernhard Landwehrmeyer<sup>2</sup>, Michael Orth<sup>2,3,4</sup>, and Anne E. Rosser<sup>1,5</sup> for the REGISTRY Investigators of the European Huntington's disease network<sup>6</sup> and Jane S. Paulsen<sup>7,8</sup> for the Predict-HD study<sup>9</sup>, Jong-Min Lee<sup>10,11,12</sup>, Marcy E. MacDonald<sup>10,11,12</sup>, James F. Gusella<sup>10,12,13</sup>, Jeffrey D. Long<sup>7</sup>, Mina Ryten<sup>14,15</sup>, Nigel Williams<sup>1</sup>, Peter Holmans<sup>1</sup>, Thomas H. Massey<sup>1</sup>, Lesley Jones<sup>1,16</sup>

1. Medical Research Council Centre for Neuropsychiatric Genetics and Genomics, Cardiff University, United Kingdom
2. Department of Neurology, University of Ulm, Ulm, Germany
3. Department of Old Age Psychiatry and Psychotherapy, Bern University, Bern, Switzerland
4. Swiss Huntington's Disease Centre, Siloah, Gümliigen, Switzerland
5. School of Biosciences, Cardiff University, Cardiff, CF10 3AX, United Kingdom
6. <http://www.ehdn.org/wp-content/uploads/REGISTRY-contributors-full-list.pdf>. See appendix
7. University of Iowa, Iowa City, Iowa, United States, 52242
8. Dept of Neurology, University of Wisconsin, Madison, WI53705, USA
9. <https://predict-hd.lab.uiowa.edu>
10. Molecular Neurogenetics Unit, Center for Genomic Medicine, Massachusetts General Hospital, Boston MA 02114, USA
11. Department of Neurology, Harvard Medical School, Boston MA 02115, USA
12. Medical and Population Genetics Program, the Broad Institute of M.I.T. and Harvard, Cambridge MA 02142, USA
13. Department of Genetics, Blavatnik Institute, Harvard Medical School, Boston MA 02115, USA
14. Great Ormond Street Institute of Child Health, Genetics and Genomic Medicine, University College London, London, United Kingdom
15. NIHR Great Ormond Street Hospital Biomedical Research Centre, University College London, London, United Kingdom
16. UK Dementia Research Institute at Cardiff, Cardiff University, United Kingdom

## Correspondence

Lesley Jones, Thomas H. Massey, Medical Research Council Centre for Neuropsychiatric Genetics and Genomics, Cardiff University, United Kingdom.

Email: [jonesl1@cf.ac.uk](mailto:jonesl1@cf.ac.uk), [masseyt1@cf.ac.uk](mailto:masseyt1@cf.ac.uk)

## Abstract

**Background:** Huntington's disease is caused by an expanded CAG tract in *HTT*. The length of the CAG tract accounts for over half the variance in age at onset of disease, and is influenced by other genetic factors, mostly implicating the DNA maintenance machinery. We examined a single nucleotide variant, rs79727797, on chromosome 5 in the *TCERG1* gene, previously reported to be associated with Huntington's disease and a quasi-tandem repeat (QTR) hexamer in exon 4 of *TCERG1* with a central pure repeat.

**Methods:** We developed a novel method for calling perfect and imperfect repeats from exome sequencing data, and tested association between the QTR in *TCERG1* and residual age at motor onset (after correcting for the effects of CAG length in the *HTT* gene) in 610 individuals with Huntington's disease via regression analysis.

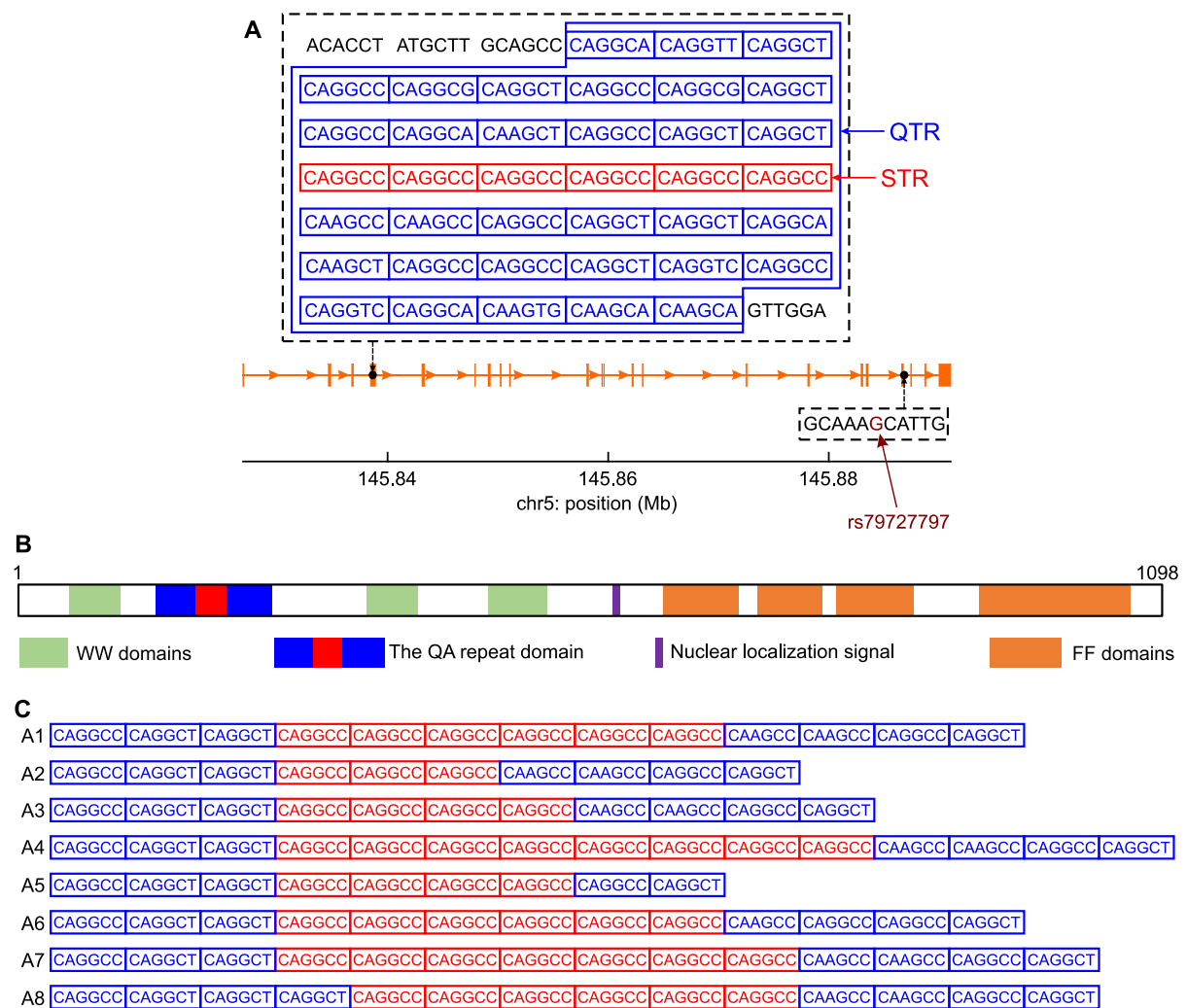
**Results:** We found a significant association between age at onset and the sum of the repeat lengths from both alleles of the QTR ( $p = 2.1 \times 10^{-9}$ ), with each added repeat hexamer reducing age at onset by one year (95% confidence interval [0.7, 1.4]). This association explained that previously observed with rs79727797.

**Conclusions:** The association with age at onset in the genome-wide association study is due to a QTR hexamer in *TCERG1*, translated to a glutamine/alanine tract in the protein. We could not distinguish whether this was due to cis-effects of the hexamer repeat on gene expression or of the encoded glutamine/alanine tract in the protein. These results motivate further study of the mechanisms by which *TCERG1* modifies onset of HD.

**Keywords:** Huntington's disease, *TCERG1*, age at onset, short tandem repeat, quasi-tandem repeat, single nucleotide variant, whole exome sequencing

## Background

Huntington's disease (HD) is an autosomal dominant neurodegenerative disorder caused by an expanded CAG tract in exon 1 of the huntingtin gene (*HTT*). It typically manifests as a progressive movement disorder, often associated with debilitating cognitive, psychiatric and behavioural problems [1]. Symptoms usually start in mid-life, progressing over 10-30 years to dementia and premature death [2]. The CAG tract is polymorphic in the normal population with 6-35 CAGs, with 36 or more CAGs in HD subjects. There is an inverse correlation between CAG tract length and age at onset of disease symptoms, accounting for up to 70% of



**Fig. 1** The relationship of rs79727797 to the CAGGCC hexanucleotide short tandem repeat in *TCERG1*. **a** The sequence of the tandem repeat region in exon 4 of *TCERG1* (orange). The blue polygon bounds quasi-tandem repeat (QTR) the central part of which contains pure repeat, CAGGCC hexanucleotide short tandem repeat (STR). **b** The *TCERG1* protein domains and location of the repeat tract. **c** The variant alleles seen at the tandem repeat locus arranged in descending order of prevalence.

the variance in age at onset [3–6]. Genome-wide association studies (GWAS) have shown that other genetic variants also influence age at onset of HD, including variants in genes in DNA damage repair pathways and sequence variants in the CAG tract [7–9]. The most recent genetic modifier GWAS in HD (GeM-GWAS) [8] revealed 21 independent signals at 14 loci. We observed that one of the significant loci on chromosome 5 (5BM1) contained *TCERG1*, the only putative genetic modifier of HD onset in the GWAS to have been previously reported [10,11]. The 5BM1 locus (146 Mbp; hg19) has one significant single nucleotide variant (SNV), rs79727797 ( $p = 3.8 \times 10^{-10}$ ), with each minor allele conferring 2.3 years later onset of HD than

expected from the subjects' CAG repeat length. SNV rs79727797 is within the *TCERG1* gene and very close to the tandem repeat locus (Fig. 1A) previously implicated in modifying HD age at onset [10,11].

*TCERG1* (Transcriptional Elongation Regulator 1; previously known as CA150) protein couples transcriptional elongation and splicing, regulating the expression of many genes [12,13]. It is highly conserved across human and mouse (97.8% identity between proteins). In humans, *TCERG1* is extremely intolerant to loss of function variants (observed/expected variants = 0.13, 90% CI 0.07 – 0.23) and is in the 5% of genes most intolerant of amino acid missense substitutions, (observed/expected variants = 0.61, 90% CI 0.56 – 0.67) [14]. *TCERG1* binds to HTT and its expression can rescue mutant HTT neurotoxicity in rat and mouse model systems [15]. *TCERG1* contains a repeat tract of 38 tandem hexanucleotides: a central perfect short tandem repeat (STR) of (CAGGCC)<sub>6</sub> embedded in a larger imperfect hexanucleotide 'quasi' tandem repeat (QTR; Fig. 1A,B; chr5:145,838,546-145,838,773 on hg19). The whole tract is translated in *TCERG1* protein as an imperfect 38 glutamine/alanine (QA) repeat interrupted with occasional valines (V; Additional file 1: Fig. S1).

Previously, a study of 432 American HD patients showed a nominally significant association of earlier onset with longer QTR length in *TCERG1* ( $p = 0.032$ , not corrected for multiple testing) [10]. A study of 427 individuals from Venezuelan HD kindreds [11] testing 12 polymorphisms previously associated with HD gave a  $p$ -value of 0.07 (not corrected for multiple testing) comparing the 306bp allele (corresponding to the reference 38-repeat QTR) with all other alleles for association with age at onset. Neither study tested the effects of repeat length directly, instead inferring it from the length of the amplified PCR products, including the flanking primer sequences.

We directly determined the repeat tract sequence in *TCERG1* in 610 HD patients by using short-read exome-sequencing data [1]. We then assessed the association of repeat alleles with age at onset of HD. We used a subset of 468 individuals for whom SNV data were available to test whether the rs79727797 variant was tagging the tandem repeat in *TCERG1* and whether the tandem repeat was likely to be the functional variant involved in modifying HD age at onset.

**Table 1** Hexanucleotide repeat allele frequencies in *TCERG1* (QTR = quasi-tandem repeat; STR = short tandem repeat)

Allele	QTR length		STR length		Number of alleles	Allele frequency (%)
	N	$\Delta N$	N	$\Delta N$		
A1	38	0	6	0	1114	91.31
A2	35	-3	3	-3	50	4.10
A3	36	-2	4	-2	28	2.30
A4	40	+2	8	+2	24	1.97
A5	34	-4	4	-2	1	0.08
A6*	38	0	6	0	1	0.08
A7	39	+1	7	+1	1	0.08
A8	39	+1	6	0	1	0.08

\* Allele A6 differs from the reference one, A1, by a synonymous SNV (see Fig. 1B).

## Results

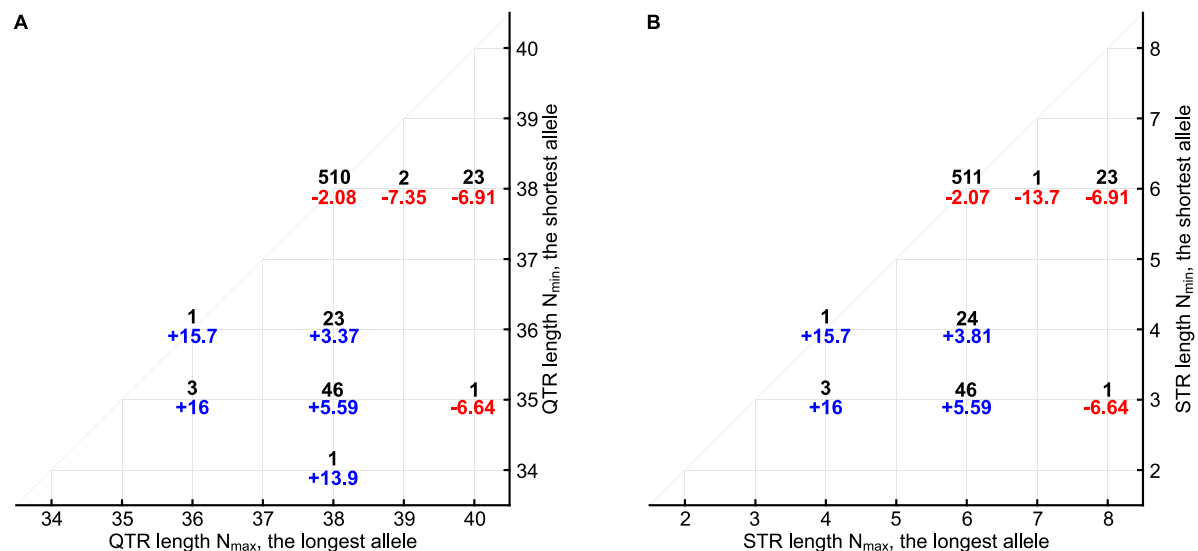
### Alleles observed at the *TCERG1* hexamer repeat

Subjects came from the REGISTRY [16] and Predict-HD [17] studies, and in Registry were individuals with the largest difference between their observed age at motor onset and that expected given their CAG repeat length, and in PREDICT those with the most extreme phenotype given their CAG repeat length, as in McAllister et al. [1].

The 38-unit QTR locus is in exon 4 of *TCERG1* and SNV rs79727797 just 3' to exon 19, separated by 50 kbp (Fig. 1A). The length of the QTR is polymorphic and we identified eight different alleles, mostly varying by central STR length (Fig. 1C). The reference allele (A1), with a central (CAGGCC)<sub>6</sub> STR, is by far the most common allele, representing 91.3% of all alleles sequenced in our study (Table 1). Alternative alleles with central STRs of different lengths were observed (Fig. 1C), of which the most common was (CAGGCC)<sub>3</sub> (4.1% of alleles; A2, Table 1). This three-repeat allele is in linkage disequilibrium with the minor allele of rs79727797: in our cohort, correlation between the SNV and allele A2 is 99%.

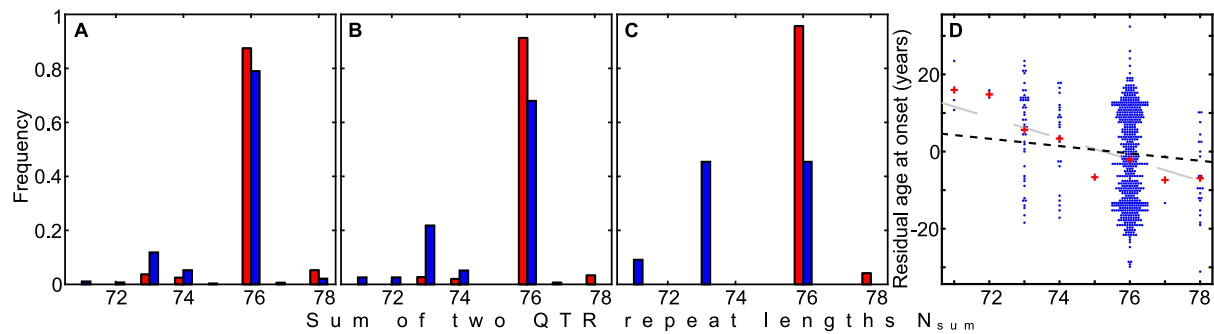
### Association with age-at onset of HD

The distribution of genotypes observed in our study is given in Fig. 2. We tested for association between residual age at onset of HD and the QTR length. As there are two alleles, we examined the association with residual age at onset of the larger or smaller repeat length,



**Fig. 2 *TCERG1* tandem repeat genotype counts and associated mean residual ages at onset.** **a** Quasi-tandem repeat (QTR) genotypes; **b** Short tandem repeat (STR) genotypes. Black numbers mark genotype counts. Red and blue numbers indicate mean residual ages at onset for individual genotypes, early onset in red, late onset in blue.

the sum of repeat lengths, and the difference between repeat lengths in each patient. We consistently found higher levels of significance in the association between residual age at onset and the sum of the repeat lengths than in the associations with the difference between repeat lengths, or maximum or minimum repeat lengths in each individual (Additional file 1: Table S1). The association of the sum of the QTR lengths from both alleles with residual age at onset was genome-wide significant ( $p = 5.0 \times 10^{-9}$  and  $2.0 \times 10^{-8}$  without and with multiple testing correction, respectively) (Additional file 1: Table S1). Logistic regression analyses using the extremes of the residual age at onset showed a similar pattern. The relationship between the sum of the hexamer repeats and the residual age at onset in HD is illustrated in Fig. 3 (see also Additional file 1: Fig. S2 for equivalent analyses of STR). Panels A-C show that subjects with extreme late onset have more copies of the shorter alleles than those with extreme early onset, and this difference becomes more pronounced as the extremes become greater. The negative correlation between the sum of QTR lengths in an individual and residual age at onset of HD is shown in Fig. 3D, with one year earlier HD onset for each added repeat hexamer (black dashed line in Fig. 3D, 95% confidence interval [0.7, 1.4]). We estimated the QTR effect size using the regression with selection analysis described in Additional file 1: Supplementary Methods. Since our HD cohort mainly contains age at onset extremes, the linear regression analysis (grey dashed line in Fig. 3D) overestimates the QTR effect size, giving 2.75 years earlier for each added hexamer. However, it can be used for



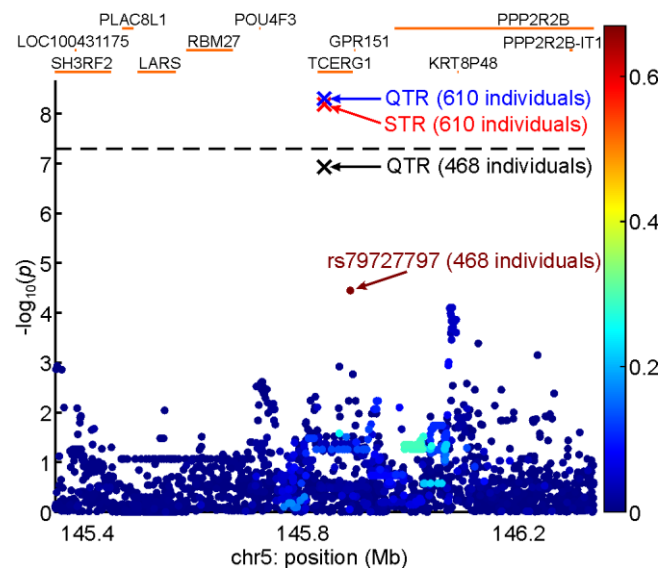
**Fig. 3 The relationship between hexanucleotide short tandem repeat (STR) length and residual age at onset of HD.** **a-c** Histograms showing distribution of the sum of two STR repeat lengths  $N_{sum} = N_{min} + N_{max}$  for the groups with early (red,  $R < -R_{thr}$ ) and late (blue,  $R > R_{thr}$ ) onsets. The panels **a**, **b**, and **c** correspond to the residual age at onset threshold  $R_{thr}$  of 0, 13, and 20 years, respectively. **d** Association of the sum of two STR repeat lengths  $N_{sum}$  with the residual age at onset for the entire HD cohort. Red pluses indicate mean residual age at onset for every sum of STR repeat lengths. Grey and black dashed lines are plotted using coefficients of the linear regression analysis and regression with selection.

comparison of the association significance between different models because it provides approximately the same  $p$ -value as the regression with selection analysis (Additional file 1: Table S2). Additional file 1: Table S2 shows a significant negative association between age at onset and the sum of QTR repeat lengths in both the REGISTRY and Predict-HD samples. Notably, (Table S2), the effect size estimated in the REGISTRY sample using regression with selection (0.98 years earlier onset for each added hexamer) is similar to that observed in the Predict-HD sample, where the selection is less extreme (1.26 years earlier onset for each added hexamer). This is an indication that applying regression with selection has successfully corrected for the bias in effect size induced by the extreme onset selection in the REGISTRY sample. The associations are slightly less significant when the pure hexamer repeat length is used rather than the full repeat:  $p = 6.5 \times 10^{-9}$  for linear regression (Additional file 1: Table S3). However, the sample size is relatively small, and a larger sample would be needed to establish whether there is any significant difference between these results.

The sum of QTR lengths was found to predict residual age at onset significantly better than the difference in QTR lengths, the minimum or maximum QTR length, or the number of copies of the 3-repeat allele (Additional file 1: Table S4, Methods). QTR lengths are thus likely to influence age at onset in an additive manner.

The relationship of the association between residual age at onset and the sum of QTR repeat lengths with those of neighbouring SNVs is shown in Fig. 4 for the 468 individuals with both SNV and sequencing data. In these individuals, the significance of the association between





**Fig. 4** Locus zoom plot showing the relationship of rs79727797 association with residual age at onset to that of the sum of two short tandem repeat (STR) lengths (black cross) in 468 subjects with both single nucleotide variant (SNV) and sequencing data. The associations of age at onset with the sum of STR (red cross) and QTR (blue cross) repeat lengths in all 610 subjects are also shown. The bar on the right of the plot indicates the strength of linkage disequilibrium ( $r^2$ ) between each SNV and the tandem repeat. The p-value threshold for genome-wide significance ( $5 \times 10^{-8}$ ) is shown with a black dashed line.

residual age at onset and sum of repeat lengths ( $p = 1.2 \times 10^{-7}$ ) was greater than that observed with the most significant SNV, rs79727797 ( $p = 3.6 \times 10^{-5}$ ). To determine whether the sum of the QTR lengths or rs79727797 was driving the association with age at onset, we performed a conditional analysis in the 468 individuals with both SNV and sequencing data. When the association of rs79727797 with residual age at onset was conditioned on the sum of the QTR lengths, the p-value in our sequenced cohort dropped from  $p = 3.6 \times 10^{-5}$  to  $p = 0.83$ . However, conditioning the association of age at onset with the sum of QTR lengths on rs79727797 genotypes, it remained significant ( $p = 9.2 \times 10^{-4}$ ), indicating that the hexanucleotide QTR, and not rs79727797, is likely to be driving the signal in our data (Fig. 4). Manhattan plots of SNV associations with residual age at onset for the 468 individuals with SNV data, conditioning on the sum of QTR lengths and rs79727797 in turn, are shown in Additional file 1: Fig. S3.

### Gene expression analyses

*TCERG1* has significant cis-expression quantitative trait loci (eQTLs), which can be used in conjunction with GWAS data to predict gene expression [18] in several tissues: GTEx [19] whole blood, PsychEncode [20] cortex, and eQTLGen whole blood [21]. rs79727797 is significantly associated only with expression of the nearby gene *PPP2R2B* (expansions in which cause SCA12) in eQTLGen ( $p = 1.13 \times 10^{-16}$ ), with the A allele that is associated with later



onset being associated with increased expression of *PPP2R2B*. However, there are several SNVs more significantly associated with *PPP2R2B* expression in eQTLGen, and these have only modest significance in the GeM-GWAS (p-values of ~0.07, see Additional file 2: Table S5). Likewise, the most significant eQTL SNVs for *TCERG1* in eQTLGen are not associated with HD age at onset in GeM (Additional file 3: Table S6). Notably, rs79727797 is not significantly associated with *TCERG1* expression (p=0.45). This indicates that gene expression (at least in whole blood) is unlikely to be the mechanism through which *TCERG1* influences age at onset in HD. This is corroborated by summary Mendelian Randomisation analyses using the eQTLGen expression data, which were non-significant (p=0.974 for *TCERG1*, p=0.07 for *PPP2R2B*). Co-localization analyses further showed that the eQTL and GWAS signals were different for both genes (colocalization probability=0). The lack of overlap between GeM GWAS association and eQTLGen and eQTL for *TCERG1* and *PPP2R2B* can be seen graphically in Additional file 1: Figs. S3 and S4.

We used FUSION [22] to perform TWAS analyses of the GeM dataset using the PsychENCODE [20] cortex expression data. There was a significant negative association between *TCERG1* expression and age at onset ( $Z=-2.71$ ,  $p=0.00671$ ): increased *TCERG1* expression is associated with earlier HD onset. Although the plot of eQTL and GWAS association (Additional file 1: Fig. S7) shows some overlap in signal, as does the table of significant eQTLs (Additional file 4: Table S7), a co-localization analysis does not show evidence that the eQTL and GWAS signals share the same causal variant (colocalization probability=0.0745). However, this analysis is inconclusive due to the relatively weak eQTL and GWAS signals (note that rs79727797 is not included in the analysis since the PsychENCODE sample is too small to demonstrate association with expression). No TWAS analyses were possible for *PPP2R2B*, since an insufficient proportion of variation in expression is attributable to SNVs. However, the plot of PsychENCODE eQTL and GWAS association (Additional file 1: Fig. S7) and table of significant eQTLs (Additional file 5: Table S8) show little overlap, which is supported by a colocalization analysis (colocalization probability=0.0376).

## Discussion

*TCERG1* is the only previously detected candidate gene for modifying HD age at onset to be confirmed by genome-wide association [8]. Our conditional analysis is consistent with the hexanucleotide tandem repeat in exon 4 explaining the signal attributed to the GWAS-

significant SNV rs79727797 (which tags the three-repeat allele A2). The strength of the effect is directly proportional to the repeat length of the *TCERG1* QTR, with shorter repeats associated with later onset and longer repeats with earlier onset of HD. The previous finding that a slightly earlier than expected age at onset was detected in individuals whose longest allele is one and half hexanucleotide repeats longer than the reference [10] is consistent with our results (the participants with the genotype (38,40) in Fig. 2A most likely correspond to the inaccurately sized genotype (38,39.5) in [10]). The effect of the number of hexanucleotide repeats appears to be additive with each additional repeat giving one year earlier onset of HD: sum of repeats is significantly better associated with age at onset than either individual repeat allele or the difference between them (Additional file1: Table S4). The previous study [10] did not find that fitting the combined length of the two alleles improved the significance of the association with age at onset but did not formally compare the various models for allele length. That we were able to show a significant difference is likely due both to a larger sample, in which power was further increased by sampling individuals with extreme ages at onset, and to testing repeat lengths directly rather than allele lengths. Given the GWAS significant signal at this locus in an unselected HD population [8] we expect that this finding will replicate in unselected HD patients. Replication through sequencing the hexamer repeat in a larger unselected cohort is needed to assess the true effect size and the relationship of the modifier effect to repeat length.

*TCERG1* has known functions in transcriptional elongation and splicing [12,13]. It is in the top 5% of genes most intolerant of missense mutations, suggesting an essential role in cell biology [14]. How the *TCERG1* hexanucleotide repeat length modifies HD onset is unknown. Possibilities include *cis* or *trans* modulation of *TCERG1* or other gene expression, modulation of RNA splicing or transcription-splicing coupling, and effects on somatic expansion of the CAG repeat in *HTT*. Effects could be mediated by the tandem repeat in DNA or RNA, or by the translated (QA)<sub>n</sub> tract in protein. The QTR has a slightly stronger association signal than the central STR, which may reflect an association with the length of the QA repeat in the protein rather than the CAGGCC hexamer in the DNA but more work is required to substantiate this observation. In DNA, repeat loci can modulate gene expression in *cis* [23,24], while transcribed repeats in RNA, especially tri- and hexamer repeats, can alter splicing, associate with R-loops and alter RNA stability or binding [25]. The hexamer repeat in *TCERG1* could act via altering expression of *TCERG1* or the nearby gene *PPP2R2B*. In our analysis evidence for the involvement of *TCERG1/PPP2R2B* expression in modification of HD age at onset is

unclear. It was not possible to test the association of the *TCERG1* repeat with expression directly and the tagging SNV (rs79727797) is relatively rare (minor allele frequency = 2.4%), so requires a very large expression sample to show any association. Only eQTLGen (whole blood) is sufficiently large (n=31,684), and in this sample rs79727797 is significantly associated with *PPP2R2B* rather than *TCERG1* expression. However, the summary Mendelian Randomisation analyses are not significant for either gene, suggesting that neither *TCERG1* nor *PPP2R2B* expression is causally involved in modifying age at onset in HD, at least in blood. A significant TWAS association was observed in the PsychENCODE cortex expression data between reduced *TCERG1* expression and later age at onset, although there was little evidence that the eQTL and GWAS signals were co-localized. However, rs79727797 was not part of the TWAS predictor, due to the insufficient size of the PsychENCODE eQTL dataset. This weakened the GWAS signal, and thus reduced the power of the co-localization analysis. Furthermore, it was impossible to perform TWAS or co-localization analyses in caudate or striatum due to the lack of suitable eQTL datasets (the GTEx caudate sample is too small to show eQTL association with *TCERG1*). Hodges et al. [26] did not observe significant differential expression of *TCERG1* between HD patients and controls in caudate, although this study assessed expression via microarrays rather than more modern techniques. Langfelder et al. [27] observed significantly increased *TCERG1* expression in the striata of Q111, Q140 and Q175 mice relative to wild type. However, this has been suggested to be a compensatory homeostatic response to promote neuron survival [28], and such an effect would be difficult to model in a human eQTL sample. Therefore, it is possible that reduced *TCERG1* expression is associated with later onset of HD but corroborating evidence from other samples or direct experimentation is required for confirmation. Consistent with the observations of Langfelder et al.[27], immunostaining of post-mortem human brain showed increased nuclear *TCERG1* in HD caudate and cortex compared with normal controls, and increased staining with HD grade, suggesting that there may be a localisation effect of the repeat as suggested previously [15] and that excess nuclear *TCERG1* is deleterious in HD [10].

The hexanucleotide tandem repeat in *TCERG1* encodes an imperfect (QA)<sub>n</sub> repeat in the protein and there are conflicting data on the role of this repeat in modulating normal *TCERG1* function. One reporter assay found the QA repeat to be dispensable for TCERG-mediated transcriptional repression [15], whereas a larger study in two cell lines found the QA repeat to be required for *TCERG1*-induced repression of the C/EBP $\alpha$  transcription factor [29]. A minimum of 17 QA repeats was required for this activity. When the QA repeat was deleted

$\Delta$ QA-*TCERG1* colocalised with wild-type *TCERG1* and prevented its canonical relocalisation from nuclear speckles to pericentromeric regions, implicating a possible dominant negative mode of action. This is consistent with the QA repeat being required to retain the nuclear localisation of *TCERG1* [15], though not for its effect on transcription, although these overexpression experiments do not distinguish the effects of DNA, RNA and protein. A dominant negative mode of action would be inconsistent with the additive genetic effect we observe, although the effects we see relate only to differences of up to 5 units of the QA repeat in each *TCERG1* allele, rather than a complete deletion of the QA tract. Effects of this smaller modulation in the QA repeat are therefore likely to be more subtle. Taken together with the evidence that increased nuclear localisation of *TCERG1* is seen in HD mouse brain [27] it is plausible that the alteration in nuclear localisation conferred by the repeat could be responsible for the observed effect of *TCERG1* on age at onset. It remains possible that *TCERG1* expresses a novel function in cells with an expanded repeat unrelated to its normal function.

Many of the known genetic modifiers of age at onset of HD are proteins that act on DNA, particularly those involved in mismatch repair. These appear to operate by altering the levels of instability and expansion of the *HTT* CAG repeat, though there is also evidence for wider DNA repair deficits in HD [30,31]. It is possible that *TCERG1* modifies HD onset by acting directly or indirectly on the mechanisms regulating somatic expansion. Expansions of the inherited *HTT* CAG length are most marked in non-dividing neurons, suggesting that these events take place during transcription or DNA repair. *TCERG1* affects the processivity of RNA polymerase and splicing events during transcription, especially co-transcription [12,13]. During co-transcription it appears to bind and dissociate from stalled spliceosome complexes transiently [13] and the QA repeat might modulate this transient binding as it does with the C/EBP $\alpha$  interaction [29]. *HTT* exon 1 contains an RNAPII pause site [32], associated with co-transcriptional splicing [33–35]. Pausing associated with co-transcriptional splicing of *HTT* could stabilise the DNA-RNA hybrid R-loops that occur during active transcription [36–38]. Stabilised R-loops would give opportunities for increased binding and processing by the DNA repair machinery, and promote somatic expansion of the CAG repeat in *HTT* exon 1. Pausing might also promote aberrant splicing of *HTT* exon 1 which is regulated by RNAPII transcription speed [39]. This would likely generate a vicious cycle as lengthening repeats lead to increased RNAPII pausing followed by further dysregulation of exon 1 splicing and production of toxic exon 1 *HTT* species [40]. Stabilised R-loops are also associated with increased levels of DNA breaks in CAG/CTG repeats cleaved by MuL $\gamma$ , encoded by

*MLH1/MLH3*, both associated with modulating the length of CAG and other expansions [41–43]: *MLH1* is associated with altered age at onset of HD [44]. Of note, knockdown of *TCERG1* in HEK293T cells leads to dysregulation of over 400 genes, including downregulation of *MLH1* [12].

The role of *TCERG1* in transcription could signal its involvement in the widespread transcriptional dysregulation that is seen in HD [12,26,45]. *TCERG1* is involved in the assembly of small nuclear ribonucleoproteins in mRNA processing [46]. It also interacts with huntingtin [10]. In yeast, proteins containing a (QA)<sub>15</sub> tract can bind to a fragment of mutant huntingtin containing 103 glutamines to suppress its toxicity [47]. In amyotrophic lateral sclerosis and some cases of frontotemporal dementia, *TCERG1* increases the levels of TDP-43, the major constituent of the pathological hallmark inclusions in mammalian cells [48]. Notably, TDP-43 is observed alongside mHTT in extranuclear pathogenic inclusions in HD [49]. The genetic association of the CAGGCC/QA repeat in *TCERG1* with age at onset of HD is robust, with a hint that it might operate at level of the protein rather than DNA. More work is needed to clarify the mechanism by which it alters onset in HD and whether this is related to previously reported pathophysiologies or a new pathway. It provides a further potential treatment target in this incurable disease.

## Conclusions

We have identified a variable hexanucleotide QTR in *TCERG1* as a modifier of HD onset, with one year reduction in age at onset of HD for each additional hexamer repeat. Elucidation of the mechanism of its modifier effect will inform research into pathogenesis in HD and, potentially, other repeat expansion disorders, and could identify new therapeutic targets.

## Materials and Methods

### Subject details

We analysed genetic and phenotypic data of 506 patients with HD from the EHDN REGISTRY study (<http://www.ehdn.org>; [16]; initially we had 507 individuals, but then we excluded one individual with unreliably called *TCERG1* QTR due to low sequencing depth coverage), and 104 individuals from the Predict study [50]. Ethical approval for Registry was obtained in each participating country. Investigation of deidentified Predict-HD subjects was approved by the Institutional Review Board of Partners HealthCare (now Mass General Brigham). Participants from both studies gave written informed consent. Experiments were conducted in accordance

with the declaration of Helsinki and ethical approval was Cardiff University School of Medicine SMREC 19/55.

DNA of the 506 REGISTRY HD individuals was provided by BioRep Inc. (Milan, Italy) from low-passage lymphoblastoid cells. For most of our HD patients (496 individuals), we measured the length of uninterrupted *HTT* exon 1 CAG repeat using an Illumina MiSeq platform [51]. For the remaining 10 individuals, we used BioRep CAG lengths determined using Registry protocols ([https://www.enroll-hd.org/enrollhd\\_documents/2016-10-R1/registry-protocol-3.0.pdf](https://www.enroll-hd.org/enrollhd_documents/2016-10-R1/registry-protocol-3.0.pdf)). For individuals from the Predict study, DNA was obtained from blood DNA and we used the CAG length recorded in the study. SNV genotype data were available for 468 of the REGISTRY individuals, as part of the GeM GWAS[8].

Age at onset was assessed as described in [11]. For REGISTRY age at motor onset data, where onset was classified as motor or oculomotor by the rating clinician, the clinician's estimate of onset was used for onset estimation. For all other onset types, we used the clinical characteristics questionnaire for motor symptoms. Predict age at motor onset was as recorded in the study, determined using the age where the diagnostic confidence level = 4. The selection of the REGISTRY and Predict samples are described in detail in [11]. Briefly, the REGISTRY samples were selected for having extreme early or late onset compared to that predicted by their CAG length. The Predict-HD samples were selected based on extreme predicted early or late onset. These originally constituted 232 individuals, of whom we analysed on those 104 who had a known age at motor onset.

### **Calling tandem hexamer from whole exome sequencing (WES) data**

For the Registry-HD cohort (N=506), sequencing was performed at Cardiff University [1]. Whole-exome libraries were generated using TruSeq® rapid exome library kits (Illumina, 20020617) according to Illumina protocols (<https://emea.support.illumina.com/downloads/truseq-rapid-exome-library-prep-reference-guide-1000000000751.html>). Libraries were sequenced on a HiSeq 4000 using 75bp paired-end reads. For the Predict-HD participants, an in-solution DNA probe based hybrid selection method was used to generate Illumina exome sequencing libraries. A HiSeq 2500 was used to generate 76bp paired end reads. De-multiplexed reads for both sets of exomes were aligned using BWA v0.7.5a [52], generating variant-ready binary alignment (BAM) files which were used for STR/QTR calling. Individuals with more than one sequencing run were merged into a single BAM file. The human genome assembly hg19 was used for sequence alignment. The



genotyping was performed using universal variant caller (UVC) software openly available at <https://github.com/LobanovSV/UVC.git>. This software allows to call SNPs, INDELs, STRs, QTRs and any their combination in several steps: (i) align single reads to the reference genome using unique matching algorithm; (ii) remove reads with bad alignment score; (iii) find all possible combinations of insertions and deletions appearing from single read alignment; (iv) re-align reads to all of those combinations and choose the best one (i.e. having the smallest mismatch error); (v) correct alignment of single reads using their pairs as well as other reads; (vi) split reads into two (if possible) groups of similar size but with different allele sequence; (vii) correct read alignment using alignments of other samples. To align single reads to the reference genome, we construct the match matrix (Additional file 1: Fig. S8) and select the path minimising the mismatch error  $M = m + \sum_{i=1}^N \Delta_i \cdot \exp(5 - l_i)$ . Here,  $m$  is sum of mismatch nucleotides,  $N$  is number of gaps,  $\Delta_i$  is the gap height (the distance between two match pieces adjoining the  $i$ -th gap), and  $l_i$  is minimal length of two match pieces. The mismatch error of this form takes into account the highly mutative nature of STRs/QTRs and allows to unbiasedly align reads with any combination of SNPs, INDELs, STRs and/or QTRs. For instance, the naive straight red line in Additional file 1: Fig. S8 has the mismatch error  $M = 2$  ( $m = 2, N = 0$ ), whereas the correct blue path with 3 hexamer deletion has much smaller mismatch error  $M = 6.2 \cdot 10^{-13}$  ( $m = 0, N = 1, \Delta_i = 18, l_i = 36$ ). If the right adjoining piece is located above the left one (for example, the break of the blue line in Additional file 1: Fig. S8), the gap is attributed as a deletion. Conversely, the discontinuity is attributed as an insertion. Finally, we create an alignment track with rows containing sequences of mapped paired reads. To simplify genotyping, we expand the sequence of the reference genome by inserting asterisks to the loci at which the reads have insertions. Conversely, we substitute nucleotide deletions in the reads by asterisks. This manoeuvre permits insertions and deletions to be treated as substitutions. After that we consider loci where some sequence reads have nucleotides different from the reference. We utilise these loci to retrieve the allele sequences by separating the reads into two groups in such a way that all reads in a single group have the same nucleotides at these loci.

### **Sanger sequencing to confirm QTR sequences**

To validate our tandem hexamer calls from WES data, we performed Sanger sequencing of four samples: two homozygous for the reference QTR allele (A1/A1 genotype), one heterozygous for a shorter QTR allele (A1/A2 genotype), and one heterozygous for a longer QTR allele (A1/A4 genotype). The QTR locus in *TCERG1* was amplified by PCR using



forward (5'-AACTGACACCTATGCTTG-3') and reverse (5'-GTTGAAGTGGATACTGCA-3') primers as described in the reference [10]. Amplicons were Sanger sequenced (LGC, Germany) in both directions using forward (5'-AACTGACACCTATGCTTGCA-3') and reverse (5'-GAAGTGGATACTGCAGGTGC-3') primers, and sequences compared to their respective calls from short-read exome sequencing data. Sequences from Sanger and exome sequencing matched in each of the four cases.

### **Measuring *TCERG1* QTR lengths using capillary electrophoresis**

To confirm *TCERG1* QTR lengths derived from exome-sequencing data, the QTR locus in *TCERG1* was amplified by PCR using a fluorescently-labelled forward (5'-FAM-AACTGACACCTATGCTTG-3') and unlabelled reverse (5'-GTTGAAGTGGATACTGCA-3') primer before sizing by capillary electrophoresis (ABI 3730 genetic analyzer) and Genescan against a LIZ600 ladder of size standards (Thermofisher). In total we tested QTR length calls for 101 individuals from the Registry-HD sample: the 73 who had at least one non-reference QTR length allele (A2-A8) and 28 who were called as homozygous for the reference (A1) allele. The reference allele A1 was predicted to produce a PCR fragment of 307 bp. In all samples this allele was consistently sized at 299 bp by capillary electrophoresis. We attributed this to the repetitive nature of the sequence and the specific analyzer used. In all 101 individuals tested, allelic QTR lengths relative to the reference A1 allele QTR length exactly matched those called using exome-sequencing data.

### **Calculation of age at onset residuals**

Expected ages of onset were calculated from patient CAG length data (measured as described above) using the Langbehn model [53]. Residual ages at motor onset were then calculated taking the difference between the expected onset from the recorded clinical age at motor onset, as performed elsewhere [8].

### **Association of age at onset with STR/QTR repeats**

Linear regression was performed of the age at onset residual on the repeat statistic (sum, diff, max, min, #3 rep). Since the sample was selected to have extreme values (positive and negative) of this residual, linear regression is likely to overestimate the effect of the repeat on onset in the general HD patient population. Therefore, regression with selection (see Additional file 1: Supplementary Methods) was used to estimate the true effect size. A dichotomous phenotype was derived by selecting individuals with extreme late (positive residual greater than a pre-defined criterion) or early (negative residual less than a pre-defined criterion) onset.

Association of the dichotomous phenotype with repeat statistic was tested via logistic regression.

To formally test which repeat statistics best predict age at onset, we proceeded as follows: For each pair of statistics A and B, a linear regression of residual age-at-onset on statistic A was performed as a baseline. Then statistic B was added to the regression and the significance of the improvement in fit assessed using ANOVA. Statistics were defined as “best fitting” if the addition of no other statistic gave a significant improvement in fit.

### **Analyses to test for correlation between genetically predicted expression and age at onset**

FUSION[22] was used to perform TWAS analyses on the PsychENCODE data using pre-computed predictors downloaded from <http://resource.psychencode.org/>. Summary Mendelian Randomisation was used to perform TWAS analyses on eQTLGen blood expression using cis-eQTL data downloaded from <https://www.eqtlgen.org/cis-eqtls.html>. Co-localisation analyses to test if eQTL and age at onset signal share the same causal SNV were performed using COLOC [54].

### **Abbreviations**

STR: Short tandem repeat; QTR: Quasi-tandem repeat; SNV: Single nucleotide variant; GWAS: Genome-wide association study; LD: Linkage disequilibrium; MAF: Minor allele frequency; eQTL: Expression quantitative trait locus; HD: Huntington’s disease.

### **Acknowledgements**

We thank all the patients who contributed data to this research. We thank the Institute of Medical Genetics for use of the ABI 3730 Genescan allele sizing service. S.L., B.Mc. were supported by CHDI, B.Mc. and S.L. by ARUK, B.Mc. by a PhD studentship from Cardiff University School of Medicine. J.F.G. and M.E.M. received support from NIH grant NS091161 and from the CHDI Foundation, Inc. J-M.L. received support from grant R01NS105709. A.E.R. received support from MRC, Wellcome Trust, Campaign for Alzheimer’s Research in Europe, Horizon 2020, JPND and Health and Care Research Wales. L.J., N.M.W. and P.H. were supported by an MRC Centre grant (MR/L010305/1). L.J., P.H., T.H.M. and N.D.A. were supported by CHDI. T.H.M. was supported by a Welsh Clinical Academic Track Fellowship, an MRC Clinical Training Fellowship (MR/P001629/1) and a Patrick Berthoud Charitable Trust Fellowship through the Association of British Neurologists. B.Mc., T.H.M and L.J. were

supported by Brain Research Trust (No.201617-06). The two of the authors of this publication are a members of the European Reference Network for Rare Neurological Diseases - Project ID No 739510. This work was performed using the computational facilities of the Advanced Research Computing @ Cardiff (ARCCA) Division, Cardiff University. The Registry study is supported by the European Huntington's Disease Network (EHDN), funded by CHDI Foundation, Inc.. The funding source had no role in study design; in the collection, analysis and interpretation of data; in the writing of the report; and in the decision to submit the paper for publication. We thank Vincent Dion for commenting on the manuscript.

## **Declaration of interests**

J.F.G.: Scientific Advisory Board member and has a financial interest in Triplet Therapeutics, Inc. His NIH-funded project is using genetic and genomic approaches to uncover other genes that significantly influence when diagnosable symptoms emerge and how rapidly they worsen in Huntington disease. The company is developing new therapeutic approaches to address triplet repeat disorders such Huntington's disease, myotonic dystrophy and spinocerebellar ataxias. His interests were reviewed and are managed by Massachusetts General Hospital and Partners HealthCare in accordance with their conflict of interest policies. G.B.L.: Consulting services, advisory board functions, clinical trial services and/or lectures for Allergan, Alnylam, Amarin, AOP Orphan Pharmaceuticals AG, Bayer Pharma AG, CHDI Foundation, GlaxoSmithKline, Hoffmann-LaRoche, Ipsen, ISIS Pharma, Lundbeck, Neurosearch Inc, Medesis, Medivation, Medtronic, NeuraMetrix, Novartis, Pfizer, Prana Biotechnology, Sangamo/Shire, Siena Biotech, Temmler Pharma GmbH and Teva Pharmaceuticals. He has received research grant support from the CHDI Foundation, the Bundesministerium für Bildung und Forschung (BMBF), the Deutsche Forschungsgemeinschaft (DFG), the European Commission (EU-FP7, JPND). His study site Ulm has received compensation in the context of the observational Enroll-HD Study, TEVA, ISIS and Hoffmann-Roche and the Gossweiler Foundation. He receives royalties from the Oxford University Press and is employed by the State of Baden-Württemberg at the University of Ulm. A.E.R.: Chair of European Huntington's Disease Network (EHDN) executive committee, Global PI for Triplet Therapeutics L.J. is a member of the scientific advisory boards of LoQus23 Therapeutics and Triplet Therapeutics. T.H.M. is an associate member of the scientific advisory board of LoQus23 Therapeutics. J-M.L is a member of the Scientific Advisory Board of GenEdit, Inc., J.D.L is a paid board member for F. Hoffmann-La Roche Ltd and uniQure biopharma B.V., and he is a paid consultant for Vaccinex Inc, Wave Life Sciences USA Inc, Genentech Inc, Triplet Therapeutics

Inc, PTC Therapeutics Inc, and Remix Therapeutics. S.L., B.Mc., J-M.L., M.E.M., M.R., N.M.W., M.O. and P.H.: nothing to disclose

## Authors' contributions

Conceptualisation: T.H.M., L.J.; Methodology: S.L., B.Mc.; Software: S.L.; Validation: M.Mc.K., T.H.M.; Formal Analysis: S.L., P.H.; Investigation: S.L., B.Mc., M.Mc.K.; Resources: B.Mc., G.B.L., A.E.R., M.O., EHDN Registry, J.S.P., Predict-HD, J.-M.L., M.E.M., J.F.G.; Data curation: S.L.; Writing – original draft: S.L., P.H., L.J.; Writing – review and editing: J.-M.L., M.E.M., J.F.G., J.D.L., M.R., T.H.M.; Visualisation: S.L.; Supervision: T.H.M., P.H., L.J., N.M.W.; Project administration: T.H.M., L.J.; Funding acquisition: L.J., P.H., T.H.M., M.R., N.M.W.

## Supplementary Information

**Additional file 1: Supplementary Information, Table S1.** Significance of the association between *TCERG1* exon 4 quasi-tandem repeat (QTR) and residual age at onset  $\mathcal{R}$  for the various ways of coding the repeat, **Table S2.** Significance of the association between the sum of *TCERG1* QTR lengths and residual age at onset in REGISTRY, Predict-HD and combined samples, **Table S3.** As Table S1, but for short tandem repeat (STR), **Table S4.** Significance (p-value) of improvement in fit to residual age at onset given by adding the “additional” QTR statistic to a model containing the “baseline” QTR statistic, **Fig. S1.** Transcription elongation regulator 1 isoform 3 [Homo sapiens], **Fig. S2.** As **Fig. 3**, but for short tandem repeat (STR), **Fig. S3.** Manhattan plots of residual age at onset association conditioning on rs79727797 and QTR, **Fig. S4.** Plots of *TCERG1* eQTL from eQTLGen and GeM GWAS, **Fig. S5.** Plots of *PPP2R2B* eQTL from eQTLGen and GeM GWAS, **Fig. S6.** Plots of *TCERG1* eQTL from PsychENCODE and GeM GWAS, **Fig. S7.** Plots of *PPP2R2B* eQTL from PsychENCODE and GeM GWAS. **Fig. S8.** Illustration of the match matrix. **Supplementary Methods.** Regression with selection.

**Additional file 2: Table S5.** List of significant eQTLGen eQTLs for *PPP2R2B* (see full description in **Additional file 1**).

**Additional file 3: Table S6.** List of significant eQTLGen eQTLs for *TCERG1* (see full description in **Additional file 1**).

**Additional file 4: Table S7.** List of significant psychENCODE eQTLs for *TCERG1* (see full description in **Additional file 1**).

**Additional file 5: Table S8.** List of significant psychENCODE eQTLs for *PPP2R2B* (see full description in **Additional file 1**).

## Availability of data and materials

The datasets supporting the conclusions of this article are included within the article and its additional files. The software performing regression with selection and STR/QTR calling are available from <https://github.com/LobanovSV> at the RegressionWithSelection and UVC repositories, respectively.

## References

1. McAllister B, Donaldson J, Binda CS, Powell S, Chughtai U, Edwards G, et al. FAN1 nuclease activity affects CAG expansion and age at onset of Huntington's disease. *bioRxiv*. 2021;
2. Bates GP, Dorsey R, Gusella JF, Hayden MR, Kay C, Leavitt BR, et al. Huntington disease. *Nat Rev Dis Prim*. 2015;1:15005.
3. Lee J-M, Ramos EM, Lee J-H, Gillis T, Mysore JS, Hayden MR, et al. CAG repeat expansion in Huntington disease determines age at onset in a fully dominant fashion. *Neurol*. 2012;78:690–5.
4. Tabrizi SJ, Scahill RI, Owen G, Durr A, Leavitt BR, Roos RA, et al. Predictors of phenotypic progression and disease onset in premanifest and early-stage Huntington's disease in the TRACK-HD study: analysis of 36-month observational data. *Lancet Neurol*. 2013;12:637–49.
5. Wexler NS, Lorimer J, Porter J, Gomez F, Moskowitz C, Shackell E, et al. Venezuelan kindreds reveal that genetic and environmental factors modulate Huntington's disease age of onset. *Proc Natl Acad Sci U S A*. United States; 2004;101:3498–503.
6. McAllister B, Gusella JF, Landwehrmeyer GB, Lee J-M, MacDonald ME, Orth M, et al. Timing and Impact of Psychiatric, Cognitive, and Motor Abnormalities in Huntington Disease. *Neurology*. Wolters Kluwer Health, Inc. on behalf of the American Academy of Neurology; 2021;
7. Huntington's GM of, Disease Consortium (GeM-HD), Lee J-M, Wheeler VC, Chao MJ, Vonsattel JPG, et al. Identification of Genetic Factors that Modify Clinical Onset of Huntington's Disease. *Cell*. Cell Press; 2015;162:516–26.
8. Consortium. GM of HD (GeM-H, Lee J-M, Kevin J, Kim K-H, Barker D, Hong EP, et al. CAG Repeat Not Polyglutamine Length Determines Timing of Huntington's Disease Onset. *Cell*. Elsevier; 2019;178:887-900.e14.
9. Hensman Moss DJ, Pardiñas AF, Langbehn D, Lo K, Leavitt BR, Roos RACC, et al. Identification of genetic variants associated with Huntington's disease progression: a genome-wide association study. *Lancet Neurol*. Elsevier; 2017;16:701–11.
10. Holbert S, Denghien I, Kiechle T, Rosenblatt A, Wellington C, Hayden MR, et al. The Gln-Ala repeat transcriptional activator CA150 interacts with huntingtin: neuropathologic and genetic evidence for a role in Huntington's disease pathogenesis. *Proc Natl Acad Sci U S A*. United States; 2001;98:1811–6.
11. Andresen JM, Gayán J, Cherny SS, Brocklebank D, Alkorta-Aranburu G, Addis EA, et al. Replication of twelve association studies for Huntington's disease residual age of onset in large Venezuelan kindreds. *J Med Genet*. J Med Genet; 2007;44:44–50.
12. Muñoz-Cobo JP, Sánchez-Hernández N, Gutiérrez S, El Yousfi Y, Montes M, Gallego C, et

- al. Transcriptional Elongation Regulator 1 Affects Transcription and Splicing of Genes Associated with Cellular Morphology and Cytoskeleton Dynamics and Is Required for Neurite Outgrowth in Neuroblastoma Cells and Primary Neuronal Cultures. *Mol Neurobiol*. United States: Humana Press Inc.; 2017;54:7808–23.
13. Sánchez-Hernández N, Boireau S, Schmidt U, Muñoz-Cobo JP, Hernández-Munain C, Bertrand E, et al. The in vivo dynamics of TCERG1, a factor that couples transcriptional elongation with splicing. *RNA*. Cold Spring Harbor Laboratory Press; 2016;22:571–82.
14. Karczewski KJ, Francioli LC, Tiao G, Cummings BB, Alföldi J, Wang Q, et al. The mutational constraint spectrum quantified from variation in 141,456 humans. *Nature*. Nature; 2020;581:434–43.
15. Arango M, Holbert S, Zala D, Brouillet E, Pearson J, Régulier E, et al. CA150 expression delays striatal cell death in overexpression and knock-in conditions for mutant huntingtin neurotoxicity. *J Neurosci*. 2006;26:4649–59.
16. Orth M, Handley OJ, Schwenke C, Dunnett SB, Craufurd D, Ho AK, et al. Observing Huntington’s Disease: the European Huntington’s Disease Network’s REGISTRY. *PLoS Curr*. United States; 2010;2:RRN1184.
17. Paulsen JS, Hayden M, Stout JC, Langbehn DR, Aylward E, Ross CA, et al. Preparing for preventive clinical trials: the Predict-HD study. *Arch Neurol*. United States; 2006;63:883–90.
18. Zhu Z, Zhang F, Hu H, Bakshi A, Robinson MR, Powell JE, et al. Integration of summary data from GWAS and eQTL studies predicts complex trait gene targets. *Nat Genet*. Nature Publishing Group; 2016;48:481–7.
19. Lonsdale J, Thomas J, Salvatore M, Phillips R, Lo E, Shad S, et al. The Genotype-Tissue Expression (GTEx) project. *Nat. Genet*. NIH Public Access; 2013. p. 580–5.
20. Gandal MJ, Haney JR, Parikshak NN, Leppa V, Ramaswami G, Hartl C, et al. Shared molecular neuropathology across major psychiatric disorders parallels polygenic overlap. *Science*. United States; 2018;359:693–7.
21. Võsa U, Claringbould A, Westra HJ, Bonder MJ, Deelen P, Zeng B, et al. Unraveling the polygenic architecture of complex traits using blood eQTL meta-analysis. *bioRxiv*. bioRxiv; 2018. p. 10.
22. Gusev A, Ko A, Shi H, Bhatia G, Chung W, Penninx BWJH, et al. Integrative approaches for large-scale transcriptome-wide association studies. *Nat Genet*. United States; 2016;48:245–52.
23. Gymrek M, Willems T, Guilmatre A, Zeng H, Markus B, Georgiev S, et al. Abundant contribution of short tandem repeats to gene expression variation in humans. *Nat Genet*. United States; 2016;48:22–9.
24. Mousavi N, Shleizer-Burko S, Gymrek M. Profiling the genome-wide landscape of tandem repeat expansions. *bioRxiv*. Cold Spring Harbor Laboratory; 2018;
25. Hannan AJ. Tandem repeats mediating genetic plasticity in health and disease. *Nat Rev Genet*. Nature Publishing Group, a division of Macmillan Publishers Limited. All Rights Reserved.; 2018;19:286–98.
26. Hodges A, Strand AD, Aragaki AKAK, Kuhn A, Sengstag T, Hughes G, et al. Regional and cellular gene expression changes in human Huntington’s disease brain. *Hum Mol Genet*. England; 2006;15:965–77.
27. Langfelder P, Cattle JP, Chatzopoulou D, Wang N, Gao F, Al-Ramahi I, et al. Integrated genomics and proteomics define huntingtin CAG length-dependent networks in mice. *Nat Neurosci*. United States; 2016;19:623–33.
28. Megret L, Gris B, Nair SS, Cevost J, Wertz M, Aaronson J, et al. Shape deformation analysis



reveals the temporal dynamics of cell-type-specific homeostatic and pathogenic responses to mutant huntingtin. *Elife*. eLife Sciences Publications Ltd; 2021;10:1–25.

29. Miller NJ, Schick K, Timchenko N, Harrison E, Roesler WJ. The Glutamine-Alanine Repeat Domain of TCERG1 is Required for the Inhibition of the Growth Arrest Activity of C/EBP $\alpha$ . *J Cell Biochem*. Wiley-Liss Inc.; 2016;117:612–20.

30. Maiuri T, Suart CE, Hung CLK, Graham KJ, Barba Bazan CA, Truant R. DNA Damage Repair in Huntington's Disease and Other Neurodegenerative Diseases. *Neurotherapeutics*. Springer; 2019. p. 948–56.

31. Massey THTH, Jones L. The central role of DNA damage and repair in CAG repeat diseases. *Dis Model Mech*. The Company of Biologists Ltd; 2018;11:dmm031930.

32. Watts JA, Burdick J, Daigneault J, Zhu Z, Grunseich C, Bruzel A, et al. cis Elements that Mediate RNA Polymerase II Pausing Regulate Human Gene Expression. *Am J Hum Genet*. Cell Press; 2019;105:677–88.

33. Alexander RD, Innocente SA, Barrass JD, Beggs JD. Splicing-Dependent RNA polymerase pausing in yeast. *Mol Cell*. Mol Cell; 2010;40:582–93.

34. Carrillo Oesterreich F, Preibisch S, Neugebauer KM. Global analysis of nascent rna reveals transcriptional pausing in terminal exons. *Mol Cell*. Mol Cell; 2010;40:571–81.

35. Wilhelm BT, Marguerat S, Aligianni S, Codlin S, Watt S, Bähler J. Differential patterns of intronic and exonic DNA regions with respect to RNA polymerase II occupancy, nucleosome density and H3K36me3 marking in fission yeast. *Genome Biol*. BioMed Central Ltd.; 2011;12.

36. Lin Y, Dent SYR, Wilson JH, Wells RD, Napierala M. R loops stimulate genetic instability of CTG·CAG repeats. *Proc Natl Acad Sci U S A*. National Academy of Sciences; 2010;107:692–7.

37. Freudenreich CH. R-loops: targets for nuclease cleavage and repeat instability. *Curr Genet*. 2018;64:789–94.

38. Khristich AN, Mirkin SM. On the wrong DNA track: Molecular mechanisms of repeat-mediated genome instability. *J. Biol. Chem*. American Society for Biochemistry and Molecular Biology Inc.; 2020. p. 4134–70.

39. Neueder A, Landles C, Ghosh R, Howland D, Myers RH, Faull RLM, et al. The pathogenic exon 1 HTT protein is produced by incomplete splicing in Huntington's disease patients. *Sci Rep*. Nature Publishing Group; 2017;7:1–10.

40. Neueder A, Dumas AA, Benjamin AC, Bates GP. Regulatory mechanisms of incomplete huntingtin mRNA splicing. *Nat Commun*. 2018;9:3955.

41. Pinto RM, Dragileva E, Kirby A, Lloret A, Lopez E, St Claire J, et al. Mismatch Repair Genes Mlh1 and Mlh3 Modify CAG Instability in Huntington's Disease Mice: Genome-Wide and Candidate Approaches. *PLoS Genet*. Public Library of Science; 2013;9:e1003930.

42. Zhao X, Zhang Y, Wilkins K, Edelmann W, Usdin K. MutLy promotes repeat expansion in a Fragile X mouse model while EXO1 is protective. *PLoS Genet*. 2018;14:e1007719.

43. Neil AJ, Liang MU, Khristich AN, Shah KA, Mirkin SM. RNA-DNA hybrids promote the expansion of Friedreich's ataxia (GAA) $_n$  repeats via break-induced replication. *Nucleic Acids Res*. England; 2018;

44. Lee J-MJ-M, Chao MJMJ, Harold D, Elneel KAKA, Gillis T, Holmans P, et al. A modifier of Huntington's disease onset at the MLH1 locus. *Hum Mol Genet*. 2017;26.

45. Pearson JL, Robinson TJ, Muñoz MJ, Kornblihtt AR, Garcia-Blanco MA. Identification of the cellular targets of the transcription factor TCERG1 reveals a prevalent role in mrna processing. *J Biol Chem*. 2008;283:7949–61.

46. Moreno-Castro C, Prieto-Sánchez S, Sánchez-Hernández N, Hernández-Munain C, Suñé C, Prieto-Sanchez S, et al. Role for the splicing factor TCERG1 in Cajal body integrity and snRNP



assembly. *J Cell Sci.* NLM (Medline); 2019;132.

47. Ripaud L, Chumakova V, Antonin M, Hastie AR, Pinkert S, Körner R, et al. Overexpression of Q-rich prion-like proteins suppresses polyQ cytotoxicity and alters the polyQ interactome. *Proc Natl Acad Sci U S A.* 2014;111:18219–24.

48. Pons M, Prieto S, Miguel L, Frebourg T, Campion D, Suñé C, et al. Identification of TCERG1 as a new genetic modulator of TDP-43 production in *Drosophila*. *Acta Neuropathol Commun.* NLM (Medline); 2018;6:138.

49. Schwab C, Arai T, Hasegawa M, Yu S, McGeer PL. Colocalization of Transactivation-Responsive DNA-Binding Protein 43 and Huntingtin in Inclusions of Huntington Disease. *J Neuropathol Exp Neurol.* Oxford Academic; 2008;67:1159–65.

50. Paulsen JS, Langbehn DR, Stout JC, Aylward E, Ross CA, Nance M, et al. Detection of Huntington's disease decades before diagnosis: the Predict-HD study. *J Neurol Neurosurg Psychiatry.* 2008;79:874–80.

51. Ciosi M, Cumming SA, Alshammari AM, Symeonidi E, Herzyk P, McGuinness D, et al. Library preparation and MiSeq sequencing for the genotyping-by-sequencing of the Huntington disease \_HTT\_ exon one trinucleotide repeat and the quantification of somatic mosaicism. *Nature Publishing Group*; 2018;

52. Li H, Durbin R. Fast and accurate short read alignment with Burrows-Wheeler transform. *Bioinformatics.* 2009;25:1754–60.

53. Langbehn DR, Brinkman RR, Falush D, Paulsen JS, Hayden MR, International Huntington's Disease Collaborative Group. A new model for prediction of the age of onset and penetrance for Huntington's disease based on CAG length. *Clin Genet.* 2004;65:267–77.

54. Giambartolomei C, Vukcevic D, Schadt EE, Franke L, Hingorani AD, Wallace C, et al. Bayesian test for colocalisation between pairs of genetic association studies using summary statistics. Williams SM, editor. *PLoS Genet.* United States: Public Library of Science; 2014;10:e1004383.

# Supplementary Information for “Huntington’s disease age at motor onset is modified by the tandem hexamer repeat in *TCERG1*”

## Supplementary Tables

Regression	$\mathcal{R}_{\text{thr}}$	$N_{\text{early}}$	$N_{\text{late}}$	Sum		Max		Min		Diff	
				b	$p$	b	$p$	b	$p$	b	$p$
Linear	Not applicable			-2.74	5.0E-09	-3.75	1.2E-03	-2.85	1.8E-07	1.82	4.9E-04
Logistic	0	323	287	-0.45	7.7E-08	-0.66	1.9E-03	-0.45	2.1E-06	0.27	1.9E-03
	7	238	203	-0.48	8.9E-07	-0.86	1.3E-03	-0.47	1.8E-05	0.28	5.9E-03
	13	149	78	-0.83	2.0E-09	-66.68	7.1E-04	-0.84	1.7E-08	0.65	5.0E-06
	20	24	11	-35.73	3.2E-05	-51.33	7.9E-02	-34.71	3.9E-05	1.37	5.1E-04

**Table S1.** Significance of the association between TCERG1 exon 4 quasi-tandem repeat (QTR) and residual age at onset  $\mathcal{R}$  for the various ways of coding the repeat. Blue and red colours highlight numbers passing  $10^{-5}$  and  $5 \cdot 10^{-8}$  *p*-value thresholds for significance, respectively.

$\mathcal{R}_{thr}$ : residual age at onset threshold used for logistic regression (years)

$N_{early}$ : number of people with early onset used for logistic regression who have  $\mathcal{R} < -\mathcal{R}_{thr}$

$N_{late}$ : number of people with late onset used for logistic regression who have  $\mathcal{R} > \mathcal{R}_{thr}$

Max: QTR repeat length of the longest allele  $N_{max}$

Min: QTR repeat length of the shortest allele  $N_{min}$

Sum: sum of two QTR repeat lengths  $N_{sum} = N_{max} + N_{min}$

Diff: difference of two QTR lengths  $N_{diff} = N_{max} - N_{min}$

Cohort	Type of regression analysis of REGISTRY	b	SE	CI		<i>p</i>
REGISTRY	Linear	-3.10	0.55	-4.19	-2.02	3.15E-08
	Selection	-0.98	0.19	-1.36	-0.62	2.30E-08
Predict-HD	N/A	-1.26	0.56	-2.37	-0.14	0.027
Combined	Linear	-2.74	0.46	-3.65	-1.84	5.02E-09
	Selection	-1.00	0.18	-1.37	-0.67	2.14E-09

**Table S2.** Significance of the association between the sum of TCERG1 QTR lengths and residual age at onset in REGISTRY, Predict-HD and combined samples. Two types of regression analysis of the REGISTRY cohort are presented: linear regression analysis and regression with selection (see Supplementary Methods section below).

Regression	$\mathcal{R}_{\text{thr}}$	$N_{\text{early}}$	$N_{\text{late}}$	Sum		Max		Min		Diff	
				b	$p$	b	$p$	b	$p$	b	$p$
Linear	Not applicable			-2.75	6.5E-09	-3.78	1.2E-03	-2.85	2.4E-07	1.80	6.5E-04
Logistic	0	323	287	-0.45	1.2E-07	-0.64	2.5E-03	-0.45	2.7E-06	0.27	2.0E-03
	7	238	203	-0.48	1.1E-06	-0.86	1.3E-03	-0.47	2.3E-05	0.28	7.4E-03
	13	149	78	-0.83	2.8E-09	-66.68	7.1E-04	-0.85	2.3E-08	0.65	7.3E-06
	20	24	11	-35.73	3.2E-05	-51.33	7.9E-02	-34.71	3.9E-05	1.37	5.1E-04

**Table S3.** As **Table S1**, but for short tandem repeat (STR).

Baseline model	Additional statistic				
	Sum	Max	Min	Diff	#3 repeats
Sum	X	0.79	0.79	0.79	0.67
Max	1.07E-06	X	1.07E-06	1.07E-06	3.33E-05
Min	8.28E-03	8.28E-03	X	8.28E-03	0.71
Diff	2.61E-06	2.61E-06	2.61E-06	X	6.03E-03
#3repeats	1.29E-04	4.77E-03	5.49E-03	0.95	X

**Table S4.** Significance (p-value) of improvement in fit to residual age at onset given by adding the “additional” QTR statistic to a model containing the “baseline” QTR statistic. See **Table S1** for explanation of Sum, Max, Min, and Diff.

**Additional file 2: Table S5.** List of significant eQTLGen eQTLs for PPP2R2B with corresponding p-value for association with age at onset in the GeM GWAS. “P-value” = eQTLGen eQTL p-value, “Z-score” = eQTLGen test statistic. Positive Z means that the “assessed” allele is associated with higher expression. “AAO\_effect” is the increase (or decrease, if negative) in age at onset (years) associated in the GeM GWAS with one copy of the “assessed” allele. P(GeM) is the p-value for association with age at onset in the GeM GWAS.

**Additional file 3: Table S6.** List of significant eQTLGen eQTLs for TCERG1 with corresponding p-value for association with age at onset in the GeM GWAS. “P-value” = eQTLGen eQTL p-value, “Z-score” = eQTLGen test statistic. Positive Z means that the “assessed” allele is associated with higher expression. “AAO\_effect” is the increase (or decrease, if negative) in age at onset (years) associated in the GeM GWAS with one copy of the “assessed” allele. P(GeM) is the p-value for association with age at onset in the GeM GWAS.

**Additional file 4: Table S7.** List of significant psychENCODE eQTLs for TCERG1 with corresponding p-value for association with age at onset in the GeM GWAS. “eQTL\_pval” = psychENCODE eQTL p-value, “eQTL\_effect” = change in expression associated with each copy of allele A1. “AAO\_effect” is the increase (or decrease, if negative) in age at onset (years) associated in the GeM GWAS with one copy of the “assessed” allele. P(GeM) is the p-value for association with age at onset in the GeM GWAS.

**Additional file 5: Table S8.** List of significant psychENCODE eQTLs for PPP2R2B with corresponding p-value for association with age at onset in the GeM GWAS. “eQTL\_pval” = psychENCODE eQTL p-value, “eQTL\_effect” = change in expression associated with each copy of allele A1. “AAO\_effect” is the increase (or decrease, if negative) in age at onset (years) associated in the GeM GWAS with one copy of the “assessed” allele. P(GeM) is the p-value for association with age at onset in the GeM GWAS.

**Additional file 6: Table S9.** List of phenotypes and genotypes for the individuals with Huntington’s disease.

NCAG: *HTT* CAG repeat length of the expanded allele

AAO: age at motor onset

RAAO: residual age at onset

rs79727797: number of minor alleles (A) of the rs79727797 SNP

dNmin\_QTR: *TCERG1* QTR repeat length of the shortest allele called from whole exome sequencing (WES) data

dNmax\_QTR: *TCERG1* QTR repeat length of the longest allele called from WES data

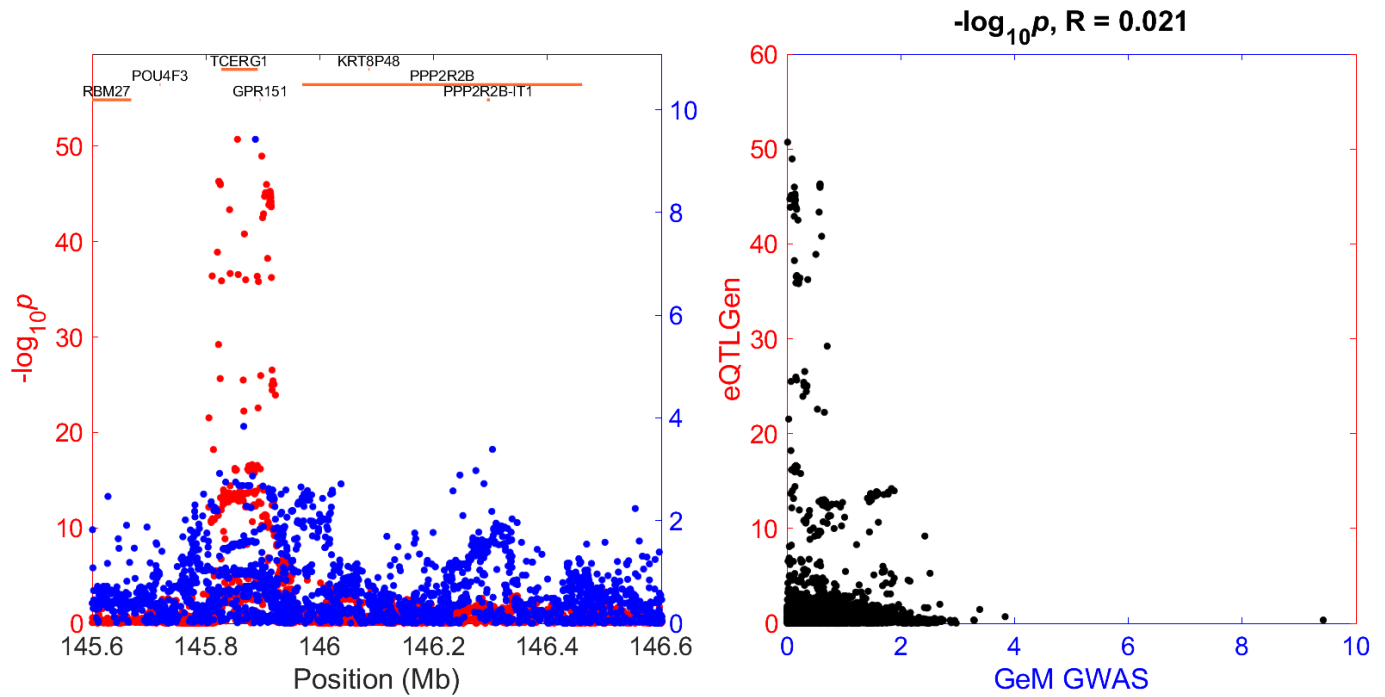
dNmin\_STR: *TCERG1* STR repeat length of the shortest allele called from WES data

dNmax\_STR: *TCERG1* STR repeat length of the longest allele called from WES data

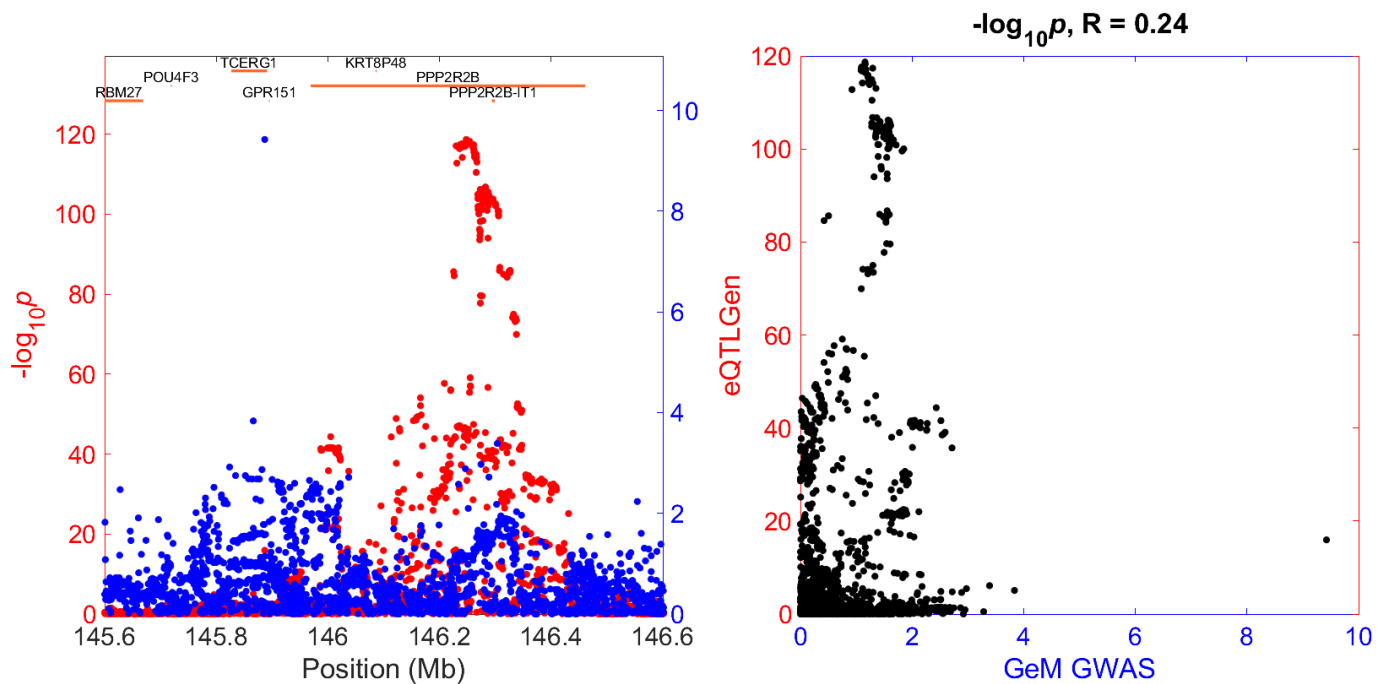
dNmin\_GeneScan: *TCERG1* QTR repeat length of the shortest allele measured using GeneScan

dNmax\_GeneScan: *TCERG1* QTR repeat length of the longest allele measured using GeneScan

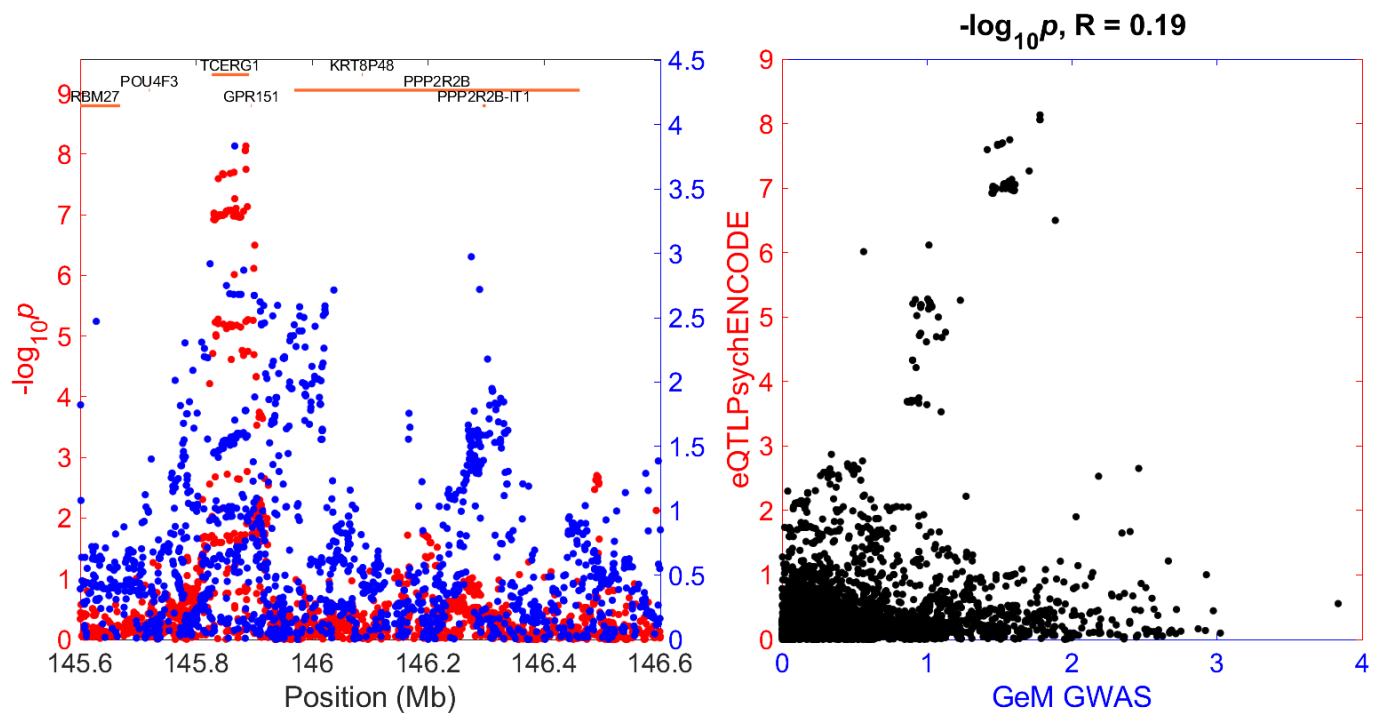




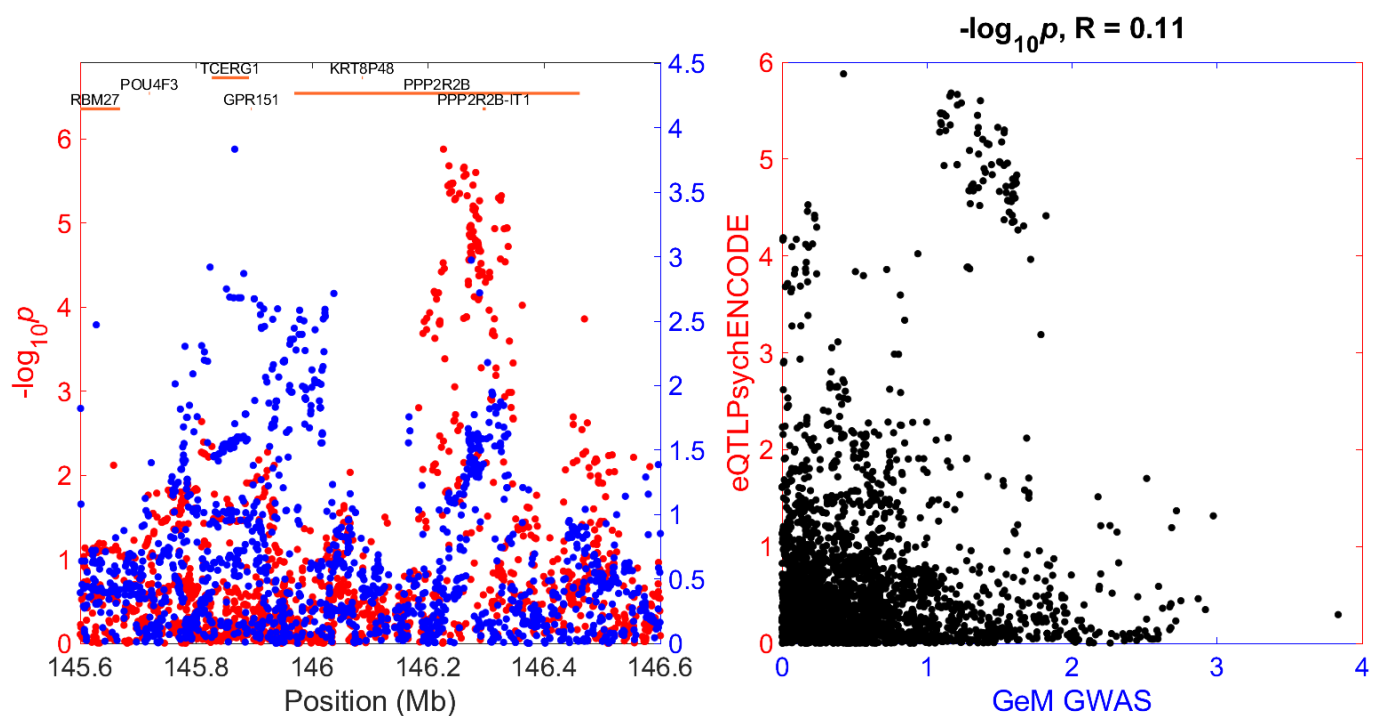
**Fig. S4.** Plots of TCERG1 eQTL  $-\log p$ -value from eQTLGen (red) and GeM GWAS  $-\log p$ -value (blue) vs chromosome position (left panel) and each other (right panel)



**Fig. S5.** Plots of PPP2R2B eQTL  $-\log p$ -value from eQTLGen (red) and GeM GWAS  $-\log p$ -value (blue) vs chromosome position (left panel) and each other (right panel)



**Fig. S6.** Plots of TCERG1 eQTL  $-\log p$ -value from PsychENCODE (red) and GeM GWAS  $-\log p$ -value (blue) vs chromosome position (left panel) and each other (right panel)



**Fig. S7.** Plots of PPP2R2B eQTL  $-\log p$ -value from PsychENCODE (red) and GeM GWAS  $-\log p$ -value (blue) vs chromosome position (left panel) and each other (right panel)





**Fig. S8.** Illustration of the match matrix. The top line with white letters on a black ground specifies the nucleotide sequence of a read. Other lines represent nucleotide sequences of the reference genome shifted by one nucleotide with respect to the previous (upper) line. Matched nucleotides are highlighted with a yellow colour which creates the match matrix (yellow = True, white = False). Two read alignments are shown. The naive way to align a read with two mismatched nucleotides is shown as a red straight line. The path with one deletion, which takes into account the highly mutative nature of STRs/QTRs, is shown with a blue line.

## Supplementary Methods: Regression with selection

### Section S1: Initial selection

We performed whole-exome sequencing of a small sub-group of the EHDN REGISTRY study. To increase statistical power, we selected individuals with the largest absolute value of the residual age at onset  $R$ .

The probability density function of the residual ages at onset in the selected sample  $p(R)$  is that of a normal distribution with mean 0 and standard deviation  $\sigma$

$$p_{\mathbb{N}}(R) = \frac{1}{\sqrt{2\pi\sigma^2}} \cdot e^{-\frac{R^2}{2\sigma^2}}$$

multiplied by a selection function

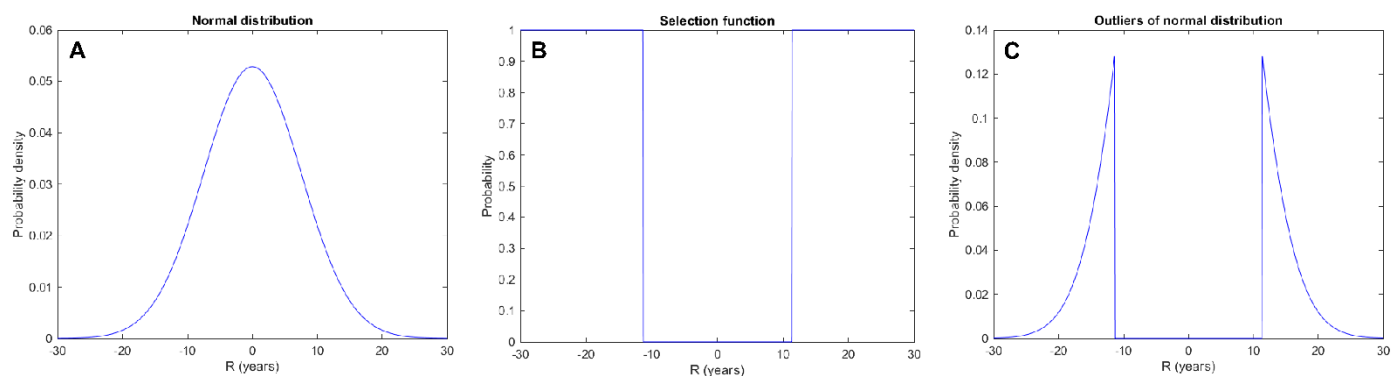
$$S(R) = \frac{1}{1 + \exp\left(\frac{R_{\text{thr}} - |R|}{\Delta}\right)}$$

and normalised to have unitary integral

$$p(R) = \frac{p_{\mathbb{N}}(R) \cdot S(R)}{\int p_{\mathbb{N}}(R) \cdot S(R) dR}.$$

Here,  $\sigma$  is the standard deviation of the initial HD population (EHDN REGISTRY study),  $R_{\text{thr}}$  is the selection threshold, and  $\Delta$  is the selection width, which was infinitely small,  $\Delta \rightarrow 0$ .

The expected probability density of the initial HD population  $p_{\mathbb{N}}(R)$ , selection function  $S(R)$ , and expected probability density  $p(R)$  of the selected HD sub-group are shown in **Fig. S9**.



**Fig. S9.** **a** Expected probability density of the initial HD population (normal distribution); **b** Selection function with infinitely small  $\Delta$ ; **c** Expected probability density of the small HD sub-group with largest absolute value of the residual age at onset  $|R|$ .

### Section S2: Correction of the age at onset residuals

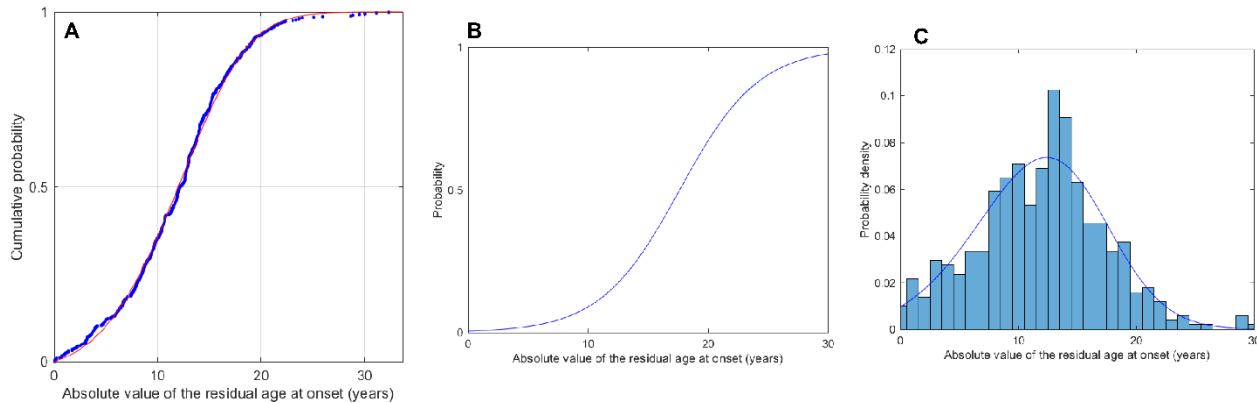
To improve the accuracy of the correction of age at onset for CAG length, we additionally measured the length of the uninterrupted HTT exon 1 CAG repeat using an Illumina MiSeq platform for 496 individuals from our HD cohort and corrected the HD age at onset residuals. Some individuals who had age at onset residual above the threshold  $R_{\text{thr}}$  shifted to the region with  $|R|$  below the threshold  $R_{\text{thr}}$  after correction. Conversely, some individuals who would have corrected age at onset residual above the threshold  $R_{\text{thr}}$ , were not selected because their uncorrected  $|R|$  were below the threshold  $R_{\text{thr}}$ . The correction has therefore widened the selection function, corresponding to a non-zero selection width  $\Delta$ .

The probability density function  $p(R)$  of our HD group with corrected residuals can be modelled in the same way as was described in **Section S1**, but with finite selection width  $\Delta$ .

We estimated parameters of the selection function  $S(R)$  by minimising maximum absolute difference  $D$  between the expected  $F_e(|R|)$  and observed  $F_o(|R|)$  cumulative probabilities

$$D = \max_{|R|} |F_e(|R|) - F_o(|R|)|.$$

The observed cumulative probability  $F_o(|R|)$  and expected one  $F_e(|R|)$  with optimal parameters  $\sigma = 7.02$ ,  $R_{\text{thr}} = 17.6$ ,  $\Delta = 3.30$  are shown in **Fig. S10A**. The one-sample Kolmogorov–Smirnov  $p$ -value is 0.81. The selection and probability densities are shown in **Fig. S10B,C**.



**Fig. S10.** **a** The observed (blue dots) and expected (red line) cumulative probabilities; **b** The selection function with optimal parameters; **c** The observed (bars) and expected (line) probability densities.

### Section S3: Likelihood function

In the linear regression, the errors

$$\varepsilon_i = R_i - (\beta_0 + \beta_1 \cdot x_i)$$

are normally distributed  $\varepsilon_i \sim \mathcal{N}(0, \sigma^2)$  and are independent across individuals. The likelihood  $\mathcal{L}_{\text{LR}}(\sigma, \beta_0, \beta_1 | R_i, x_i)$  is

$$\mathcal{L}_{\text{LR}}(\sigma, \beta_0, \beta_1 | R_i, x_i) = p_{\mathcal{N}}(\varepsilon_i),$$

where  $p_{\mathcal{N}}(\varepsilon_i)$  is the probability density function of normal distribution (see **Section S1**). Here,  $\sigma$ ,  $\beta_0$ , and  $\beta_1$  are unknown standard deviation, intercept, and effect size, respectively;  $R_i$  and  $x_i$  are age at onset residual and sum of TCERG1 QTR lengths of a specific individual.

In the regression with selection, the distribution of the errors differs between individuals. The likelihood  $\mathcal{L}(\sigma, \beta_0, \beta_1 | R_i, x_i)$  is

$$\mathcal{L}(\sigma, \beta_0, \beta_1 | R_i, x_i) = \frac{p_{\mathcal{N}}(\varepsilon_i) \cdot S(R_i)}{\int p_{\mathcal{N}}(R - (\beta_0 + \beta_1 \cdot x_i)) \cdot S(R) dR}.$$

Note, the integral in the denominator depends on the individual's sum of QTR lengths  $x_i$ . Here,  $S(R)$  is the selection function (see **Section S1**).

We estimated the unknown parameters  $\sigma$ ,  $\beta_0$ , and  $\beta_1$  by maximising the likelihood function of all observations

$$\mathcal{L}(\sigma, \beta_0, \beta_1) = \prod_i \mathcal{L}(\sigma, \beta_0, \beta_1 | R_i, x_i)$$

and used the likelihood-ratio test (comparing the likelihood maximised over  $\sigma, \beta_0, \beta_1$  to that maximised over  $\sigma$  and  $\beta_0$ , holding  $\beta_1=0$ ) to obtain the significance of the association.

## Section S4: Software

The software performing minimisation of the maximum absolute difference between the expected and observed cumulative probabilities (**Section S2**) and maximisation of the likelihood function (**Section S3**) is freely available from <https://github.com/LobanovSV/RegressionWithSelection.git>.