

Global network structure and local transcriptomic vulnerability shape atrophy in sporadic and genetic behavioral variant frontotemporal dementia

Golia Shafiei^{1,*}, Vincent Bazinet^{1,*}, Mahsa Dadar^{1,2}, Ana L. Manera¹, D. Louis Collins¹, Alain Dagher¹, Barbara Borroni³, Raquel Sanchez-Valle⁴, Fermin Moreno^{5,6}, Robert Laforce Jr.⁷, Caroline Graff^{8,9}, Matthias Synofzik^{10,11}, Daniela Galimberti^{12,13}, James B. Rowe¹⁴, Mario Masellis¹⁵, Maria Carmela Tartaglia¹⁶, Elizabeth Finger¹⁷, Rik Vandenberghe^{18,19,20}, Alexandre de Mendonça²¹, Fabrizio Tagliavini²², Isabel Santana^{23,24}, Chris Butler^{25,26}, Alex Gerhard^{27,28}, Adrian Danek²⁹, Johannes Levin^{29,30,31}, Markus Otto³², Sandro Sorbi^{33,34}, Lize C. Jiskoot³⁵, Harro Seelaar³⁵, John C. van Swieten³⁵, Jonathan D. Rohrer³⁶, Bratislav Mišić^{1,*,‡}, Simon Ducharme^{1,37,*,‡}, Frontotemporal Lobar Degeneration Neuroimaging Initiative (FTLDNI)[†], GENetic Frontotemporal dementia Initiative (GENFI)[‡]

*Equal contribution

‡Correspondence to: bratislav.misic@mcgill.ca or simon.ducharme@mcgill.ca

†Data used in preparation of this article were obtained from the Frontotemporal Lobar Degeneration Neuroimaging Initiative (FTLDNI) database (<http://4rtni-ftldni.ini.usc.edu/>). The investigators at NIFD/FTLDNI contributed to the design and implementation of FTLDNI and/or provided data but did not participate in analysis or writing of this report (unless otherwise listed). The FTLDNI investigators included the following individuals: Howard Rosen - University of California, San Francisco (PI); Bradford C. Dickerson - Harvard Medical School and Massachusetts General Hospital; Kimoko Domoto-Reilly - University of Washington School of Medicine; David Knopman - Mayo Clinic, Rochester; Bradley F. Boeve - Mayo Clinic Rochester; Adam L. Boxer - University of California, San Francisco; John Kornak - University of California, San Francisco; Bruce L. Miller - University of California, San Francisco; William W. Seeley - University of California, San Francisco; Maria-Luisa Gorno-Tempini - University of California, San Francisco; Scott McGinnis - University of California, San Francisco; Maria Luisa Mandelli - University of California, San Francisco

‡List of other GENFI Consortium Members in Appendix

¹McConnell Brain Imaging Centre, Montréal Neurological Institute, McGill University, Montréal, Canada

²Radiology and Nuclear Medicine, Laval University, Quebec City, Quebec, Canada

³Centre for Neurodegenerative Disorders, Department of Clinical and Experimental Sciences, University of Brescia, Brescia, Italy

⁴Alzheimer's disease and Other Cognitive Disorders Unit,

Neurology Service, Hospital Clínic, Institut d'Investigacions Biomèdiques August Pi I Sunyer, University of Barcelona, Barcelona, Spain

⁵Cognitive Disorders Unit, Department of Neurology, Donostia University Hospital, San Sebastian, Gipuzkoa, Spain

⁶Neuroscience Area, Biodonostia Health Research Institute, San Sebastian, Gipuzkoa, Spain

⁷Clinique Interdisciplinaire de Mémoire,

Département des Sciences Neurologiques, CHU de Québec, and Faculté de Médecine, Université Laval, Québec, Canada

⁸Department of Geriatric Medicine, Karolinska University Hospital-Huddinge, Stockholm, Sweden

⁹Unit for Hereditary Dementias, Theme Aging, Karolinska University Hospital, Solna, Sweden

¹⁰Department of Neurodegenerative Diseases,

Hertie-Institute for Clinical Brain Research and Center of Neurology, University of Tübingen, Tübingen, Germany

¹¹Center for Neurodegenerative Diseases (DZNE), Tübingen, Germany

¹²Fondazione IRCCS Ca' Granda Ospedale Maggiore Policlinico, Neurodegenerative Diseases Unit, Milan, Italy

¹³Dept. of Biomedical, Surgical and Dental Sciences, University of Milan, Dino Ferrari Center, Milan, Italy

¹⁴University of Cambridge Department of Clinical Neurosciences,

Cambridge University Hospitals NHS Trust, and MRC Cognition and Brain Sciences Unit, Cambridge, UK

¹⁵Sunnybrook Health Sciences Centre, Sunnybrook Research Institute, University of Toronto, Toronto, Canada

¹⁶Toronto Western Hospital, Tanz Centre for Research in Neurodegenerative Disease, Toronto, Ontario, Canada

¹⁷Department of Clinical Neurological Sciences, University of Western Ontario, London, ON, Canada

¹⁸Laboratory for Cognitive Neurology, Department of Neurosciences, KU Leuven, Leuven, Belgium

¹⁹Neurology Service, University Hospitals Leuven, Belgium

²⁰Leuven Brain Institute, KU Leuven, Leuven, Belgium

²¹Faculty of Medicine, University of Lisbon, Lisbon, Portugal

²²Fondazione Istituto di Ricovero e Cura a Carattere Scientifico Istituto Neurologico Carlo Besta, Milan, Italy

²³Neurology Department, Centro Hospitalar e Universitário de Coimbra, Coimbra, Portugal

²⁴Center for Neuroscience and Cell Biology, Faculty of Medicine, University of Coimbra, Coimbra, Portugal

²⁵Department of Clinical Neurology, University of Oxford, Oxford, UK

²⁶Department of Brain Sciences, Imperial College London, UK

²⁷Institute of Brain, Behaviour and Mental Health, The University of Manchester, Withington, Manchester, UK

²⁸Departments of Geriatric Medicine and Nuclear Medicine, University of Duisburg-Essen, Germany

²⁹Ludwig-Maximilians-Universität München, Munich, Germany

³⁰German Center for Neurodegenerative Diseases (DZNE), Munich, Germany

³¹Munich Cluster of Systems Neurology (SyNergy), Munich, Germany

³²Department of Neurology, University Hospital Ulm, Ulm, Germany

³³Department of Neurofarba, University of Florence, Italy

³⁴IRCCS Fondazione Don Carlo Gnocchi, Florence, Italy

³⁵Department of Neurology, Erasmus University Medical Centre, Rotterdam, Netherlands

³⁶Department of Neurodegenerative Disease, Dementia Research Centre, UCL Institute of Neurology, Queen Square, London, UK

³⁷Douglas Mental Health University Institute, Department of Psychiatry, McGill University, Montréal, Canada

Abstract

Connections among brain regions allow pathological perturbations to spread from a single source region to multiple regions. Patterns of neurodegeneration in multiple diseases, including behavioral variant of frontotemporal dementia (bvFTD), resemble the large-scale functional systems, but how bvFTD-related atrophy patterns relate to structural network organization remains unknown. Here we investigate whether neurodegeneration patterns in sporadic and genetic bvFTD are conditioned by connectome architecture. Regional atrophy patterns were estimated in both genetic bvFTD (75 patients, 247 controls) and sporadic bvFTD (70 patients, 123 controls). We first identify distributed atrophy patterns in bvFTD, mainly targeting areas associated with the limbic intrinsic network and insular cytoarchitectonic class. Regional atrophy was significantly correlated with atrophy of structurally- and functionally- connected neighbors, demonstrating that network structure shapes atrophy patterns. The anterior insula was identified as the predominant group epicenter of brain atrophy using data-driven and simulation-based methods, with some secondary regions in frontal ventromedial and antero-medial temporal areas. Finally, we find that FTD-related genes, namely C9orf72 and TARDBP, confer local transcriptomic vulnerability to the disease, effectively modulating the propagation of pathology through the connectome. Collectively, our results demonstrate that atrophy patterns in sporadic and genetic bvFTD are jointly shaped by global connectome architecture and local transcriptomic vulnerability.

Introduction

Frontotemporal dementia (FTD) is one of the most common forms of early-onset dementia [39, 47]. The behavioral variant of FTD (bvFTD), which presents with various combinations of behavioral (apathy, disinhibition, compulsions and stereotypies), personality (decreased empathy and sympathy, altered personal preferences) and cognitive (executive dysfunction and social cognitive deficits) changes, is the most common clinical variant of FTD [39, 46]. Despite its distinctive clinical presentation, bvFTD is pathologically heterogeneous, with the most common subtypes being related to the accumulation of hyperphosphorylated aggregates of either Tau or TAR DNA-binding protein 43 (TDP-43) [41]. This group of pathological proteinopathies causing FTD are classified under the frontotemporal lobar degeneration (FTLD) umbrella. Most cases are sporadic, however around 20% are caused by an autosomal-dominant genetic mutation including hexanucleotide repeat expansions near the chromosome 9 open reading frame gene-C9orf72, progranulin-GRN, and microtubule-associated tau protein-MAPT, as the most common causative genes [41].

FTLD pathology cause clinical bvFTD symptoms through their predominant localization in frontal and anterior temporal brain regions [41]. Clinically this is reflected by progressive cortical atrophy, which is a crucial biomarker for the diagnosis [21, 36]. While there is major overlap in atrophy patterns between sporadic and genetic bvFTD, each genetic subtype has distinctive features including antero-medial atrophy in MAPT, posterior frontal and parietal involvement in GRN and thalamic/cerebellar volume loss in C9orf72 [13]. In recent years, there has been an interest to understand how heterogeneous pathological changes could lead to similar clinical and atrophy profiles [50].

In early work based on functional magnetic resonance imaging (fMRI), it was hypothesized that atro-

phy in neurodegenerative diseases progresses predominantly along functional neural networks [65], with the salience network being predominantly affected in bvFTD [51, 66]. Within the salience network, the anterior insula was identified as the most likely disease epicenter [51, 65], a finding that was further supported by pathologic accumulation of tau or TDP-43 aggregates in fork cells and Von Economo neurons, which are specific to this region [32]. While the anterior insula clearly plays a significant role in the disease, other studies using data-driven methods on structural atrophy patterns revealed distinct morphological subtypes including two salience network-predominant subgroups (a frontal/temporal subtype and a frontal subtype), a semantic appraisal network-predominant group, and a subcortical-predominant group [44, 45]. This opens the possibility that there is not a single unique epicenter at the origin of all bvFTD cases.

Emerging theories emphasize that connectome architecture shapes the course and expression of multiple neurodegenerative diseases [15, 22, 30, 42, 60, 61]. Misfolding of endogenous proteins and their subsequent trans-neuronal spread has been documented in FTLD, Alzheimer's, Parkinson's, Huntington's and amyotrophic lateral sclerosis (ALS) [12]. Despite differences in origin and the proteins involved in each disease, the spread of the pathology appears to reflect brain network organization at the macroscale level. Namely, anatomical connectivity is thought to support the propagation of toxic protein aggregates, such that focal pathology can spread between connected neuronal populations and infiltrate distributed networks in the brain.

Two key questions remain unanswered about the spread of pathology in bvFTD. First, the spread of pathology is likely to occur via physical white matter connections but the contribution of structural connectivity to atrophy progression has been less explored in bvFTD. Evidence for transneuronal spread of FTLD pathology is mostly based on extrapolation from functional imaging

TABLE 1. Demographic and clinical characteristics of the FTLN1 and GENFI2 samples | CNCs in GENFI2 cohort correspond to non-carrier first degree relative of a family member with a documented genetic mutation related to FTD. Genetic groups listed for CNCs in the GENFI2 cohort refer to mutation present in the family of these non-carrier subjects. Values are expressed as mean \pm standard deviation, median [interquartile range]. Data available is specified for each clinical variable as N, whereas N/A indicates data not available from the original databases. (FTLN1: frontotemporal lobar degeneration neuroimaging initiative; GENFI: genetic frontotemporal dementia initiative; bvFTD: behavioral-variant frontotemporal dementia; CNCs: cognitively normal controls; MMSE: Mini Mental State Examination. FTLN1-CDR: Frontotemporal lobar degeneration clinical dementia rating.)

	FTLN1 (N=193)			GENFI2 (N=322)		
	CNCs N=123	bvFTD (N=70)	p-value	CNCs N=247	bvFTD (N=75)	p-value
Total number of scans	326	156		409	119	
Age mean (SD), y	63 \pm 6	62 \pm 6	0.36	48 \pm 14	64 \pm 8	< 0.001
Male sex no. (%)	53(43%)	47(67%)	0.001	106(43%)	41(55%)	0.07
Education mean (SD), y	17.5 \pm 1.9	15.6 \pm 3.4	< 0.001	13.9 \pm 3.5	11.8 \pm 4.03	< 0.001
Estimated years of onset mean (SD), y		N/A			5.2 \pm 5.7	
Disease duration mean [min-max], y					5.1[3.5-8.2]	
MMSE score mean (SD)	29.4 \pm 0.8	23.6 \pm 4.9	< 0.001	29.4 \pm 1.1	21.9 \pm 7.2	< 0.001
FTLN1-CDR Score mean (SD)	0.04 \pm 0.2	6.3 \pm 3.3	< 0.001	0.21 \pm 0.7	9.7 \pm 1.4	< 0.001
Genetic Group no. (%):						
- C9orf72					39(52%)	
- MAPT					17(22.7%)	
- GRN					39(19(25.3%))	

[50, 65], with some support from studies using animal models [40], autopsy data [31] and prediction of atrophy patterns [10]. Although functional connectivity reflects the underlying structural connectivity patterns and is sometimes used as a proxy for structural connectivity if no such data is available, the two modalities capture fundamentally different features of brain network organization and are only moderately correlated with each other [54]. Second, the role of local vulnerability is poorly understood. Most connectome-based models of neurodegeneration assume all neuronal populations (network nodes) have the same vulnerability to the disease, eschewing the possibility that regional differences in molecular and cellular make-up render some nodes more or less vulnerable. In particular, recent reports in other neurodegenerative diseases suggest that regional differences in gene expression may confer vulnerability, effectively guiding the pathological process through the network [23, 43, 64]. Altogether, we hypothesize that brain network architecture, in concert with local vulnerability conferred by expression of specific genes, shapes the spatial distribution of atrophy patterns in brain disorders, including FTD [51, 63, 64].

In the present report we test a structural network-based atrophy propagation model in bvFTD across sporadic and genetic variants. Specifically, we test the hypothesis that atrophy patterns in bvFTD reflect the underlying network organization and local transcriptomic vulnerability. We first estimate cortical atrophy patterns as regional changes in tissue deformation in bvFTD patients. We then use structural and functional connectivity networks derived from an independent sample of healthy individuals, to investigate whether regions that

are connected with each other display similar atrophy patterns. Finally, we identify potential disease epicenters using a data-driven approach as well as a simulation-based approach that models the spread of atrophy across the brain network. We further explore the potential contribution of FTD-related genes to the propagation of atrophy.

Results

Demographics

Table. 1 compares demographic and clinical variables between bvFTD and CNCs across the two research databases. Subjects with bvFTDs were on average older than CNCs in the GENFI2 cohort, but not in FTLN1. As expected, significantly lower MMSE and higher FTLN1-CDR average scores were observed in symptomatic subjects compared to healthy controls.

Distribution of atrophy and resting state networks and cytoarchitectonic classes

We used a linear mixed effects model to obtain a group-level, bvFTD-related atrophy map, controlling for age, sex and acquisition site. The voxel-level and parcelated atrophy maps are depicted in Fig. S1a,b. In order to assess whether distributed atrophy patterns are more pronounced in specific brain systems, we used two brain system definitions (Fig. 1): (1) intrinsic functional networks defined by Yeo and colleagues [62]; (2) a cytoarchitectonic classification of human cortex based on the classic von Economo atlas [49, 56, 58, 59]. Nodes were

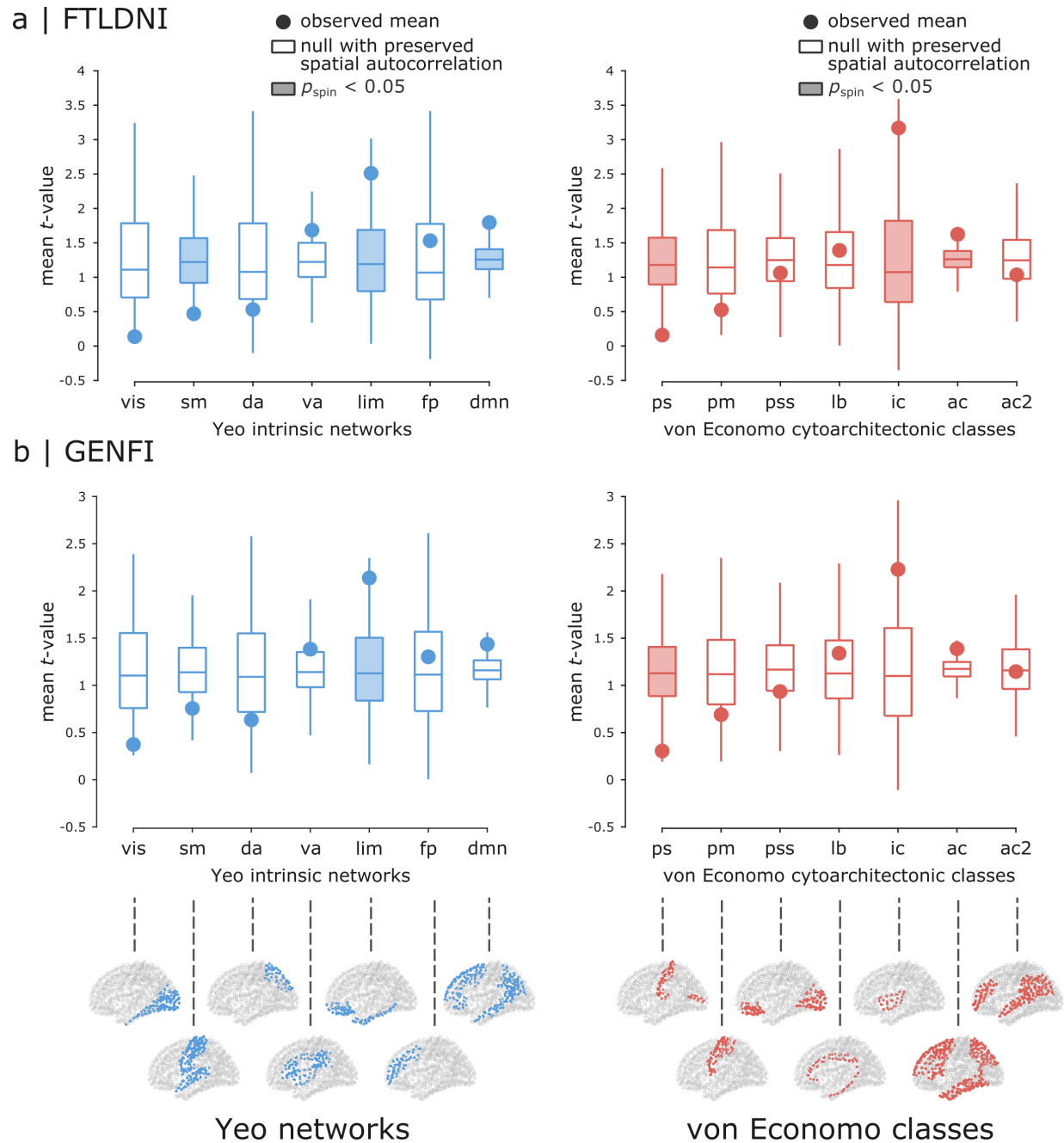


Figure 1. Atrophy patterns in intrinsic networks and cytoarchitectonic classes | Mean network atrophy (i.e., t -value) was calculated for Yeo intrinsic functional networks [62] (left column) and von Economo cytoarchitectonic classes [49, 56, 58, 59] (right column). Higher t -values correspond to greater atrophy. The observed mean atrophy values are shown by filled circles for each intrinsic network and cytoarchitectonic class. Network labels are then randomly permuted using 10,000 rotations from spin tests, preserving the spatial autocorrelation in the data. The null distributions of means from spin tests are depicted using box plots for intrinsic networks and cytoarchitectonic classes for both (a) FTLDNI and (b) GENFI datasets (10,000 repetitions; two-tailed test). The bottom row displays the location of intrinsic networks (left) and cytoarchitectonic classes (right) on the cortex. List of Yeo networks: visual (vis), somatomotor (sm), dorsal attention (da), ventral attention (va), limbic (lim), frontoparietal (fp), default mode (dmn). List of von Economo classes: primary sensory cortex (ps), primary motor cortex (pm), primary/secondary sensory cortex (pss), limbic (lb), insular cortex (ic), association cortex (ac, ac2).

first stratified according to their network assignments based on the Yeo networks and von Economo classes. We then calculated the mean atrophy values for each intrinsic network (Fig. 1, left) and cytoarchitectonic class (Fig. 1, right) for FTLDNI (Fig. 1a) and GENFI (Fig. 1b) datasets, separately. To assess the statistical significance of network atrophy values, we compared the empirical values to a distribution of means calculated from a set of spatial autocorrelation-preserving null models (i.e., “spin tests” [1, 35]; see *Methods* section for more details on null model). Specifically, network labels were randomly rotated while preserving the spatial autocorrelation and the mean network atrophy values were calculated for each rotation (10,000 repetitions; two-tailed test).

The observed mean network atrophy and the corresponding null distribution of means are depicted for each intrinsic network and cytoarchitectonic class in Fig. 1. The anatomical distributions of intrinsic networks and cytoarchitectonic classes are depicted in Fig. 1 (bottom row). Note the difference in the definition of “limbic” system between the intrinsic networks and cytoarchitectonic classes. The intrinsic limbic network mainly consists of the temporal poles and orbitofrontal cortex, whereas the cytoarchitectonic limbic class mainly includes the cingulum. In terms of intrinsic networks, limbic and default mode intrinsic networks were the most affected (i.e., higher than expected atrophy) with relative preservation of somatomotor and visual intrinsic networks (i.e., lower than expected atrophy). In terms of cytoarchitectonic classes, the insular and association cytoarchitectonic classes displayed greater atrophy compared to nulls, with lower atrophy in primary sensory cytoarchitectonic classes. While there are marginal variations in statistical significance of the findings, the overall trend of network atrophy patterns is consistent across the two datasets.

Relationship between atrophy maps and connectivity

We next investigated whether atrophy patterns in bvFTD are conditioned by network organization, such that connected regions display similar atrophy patterns. Specifically, we assessed whether the connectivity profile of a node can predict the atrophy of its neighbors by investigating the relationship between node and neighbor atrophy values (Fig. 2a). Structural and functional connectivity (SC and FC) networks (Fig. S1c), derived from an independent sample of 70 healthy participants [26], were used to estimate mean neighbor atrophy value for each region. The relationship between node and neighbor atrophy was then examined by correlating the mean neighbor atrophy with nodal atrophy (Fig. 2c,d). Regional atrophy was significantly correlated with the mean atrophy of its connected neighbors in both datasets. Fig. 2c (left panel) shows the results for FTLDNI dataset (high resolution parcellation: $r = 0.69$, $p_{\text{spin}} = 0.0001$ and $r = 0.65$, $p_{\text{spin}} = 0.0001$, for SC- and FC- defined neighbors respectively) and Fig. 2d

(left panel) shows the results for GENFI dataset (high resolution parcellation: $r = 0.61$, $p_{\text{spin}} = 0.001$ and $r = 0.54$, $p_{\text{spin}} = 0.0006$, for SC- and FC- defined neighbors respectively). To assess whether the relationship between node and neighbor atrophy is specifically driven by network topology rather than spatial autocorrelation, we used a spatial autocorrelation-preserving null model to construct a null distribution of node-neighbor correlations [1]. Fig. 2c,d (middle panel) displays the observed correlation between node and neighbor atrophy along with the corresponding null distribution of correlations for both datasets. We also repeated all analyses at a lower parcellation resolution to ensure that the findings are robust to how network nodes are defined. The relationship between node and neighbor atrophy was consistent across resolutions and significantly greater in empirical networks compared to null networks in both datasets (Fig. 2c,d; $p_{\text{spin}} < 0.05$, two-tailed tests). The results were consistent when binarized structural connectivity network was used to define SC- defined neighbors (Fig. S2).

Data-driven epicenters analysis

Given that the distribution of atrophy patterns reflects structural and functional network organization, we next investigated whether there are brain regions that may act as potential epicenters for bvFTD. We define an epicenter as a high atrophy node that is connected to high atrophy neighbors (Fig. 2b). Nodes were ranked based on their atrophy and their neighbors’ mean atrophy values. Epicenter likelihood ranking was then estimated as the mean node ranking across the two lists. Fig. 2c,d (rightmost panel) shows the epicenter likelihood rankings on the cortex for FTLDNI (Fig. 2c) and GENFI (Fig. 2d) datasets, where the highly ranked regions are associated with insular cortex, ventromedial cortex and antero-medial temporal areas. Empirical epicenter likelihood rankings were then compared with rankings estimated from spatial autocorrelation-preserving null models (10,000 spin tests [1]). Several regions were identified as potential epicenters including the anterior insular cortex bilaterally, but also areas in the anterior temporal poles, in addition to ventromedial and dorsomedial areas. The results were consistent when binarized structural connectivity network was used to define SC- defined neighbors (Fig. S2).

Dynamic spreading model

We next used an S.I.R model to explore how the brain’s structural connectivity shapes the progressive spread of FTLD changes. This model has been previously used to study Parkinson’s disease-related atrophy [64] and works by simulating the misfolding of normal proteins in the cortex and their trans-neuronal spread through the structural connections between brain regions. The accumulation of misfolded proteins, acting as pathogenic agents,

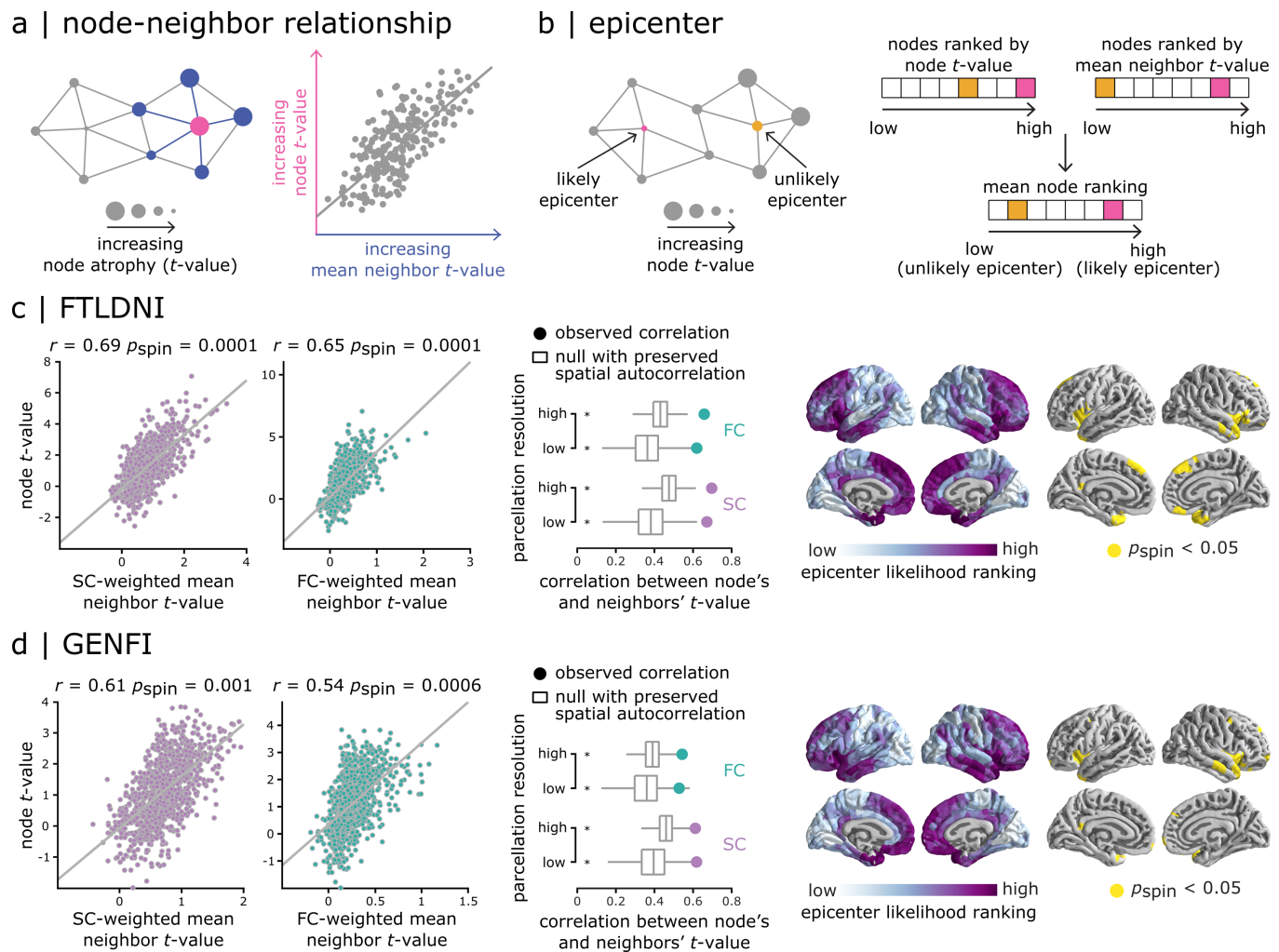


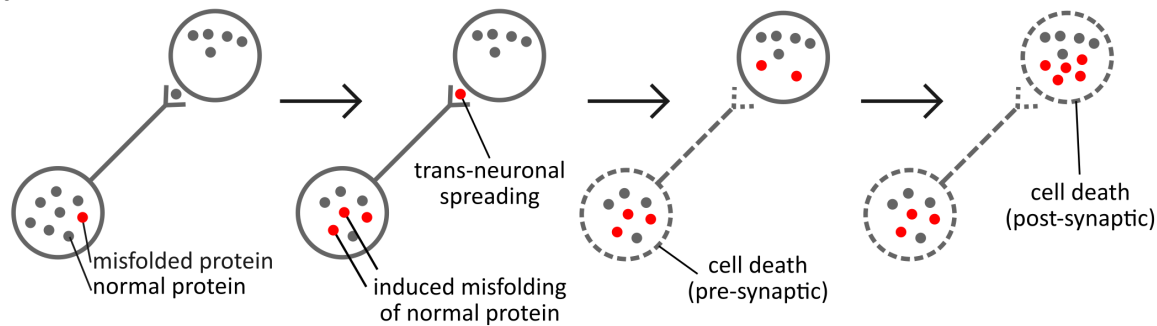
Figure 2. Network-dependent atrophy | (a) Atrophy of a node, estimated by t-values, was correlated with the mean atrophy of its connected neighbors to examine whether the distributed atrophy patterns in bvFTD reflect the underlying network organization. (b) If atrophy of a node is related to the atrophy of its connected neighbors (panel a), a node with high atrophy whose neighbors are also highly atrophied would be more likely to be a potential disease epicenter, compared to a high atrophy node with healthy neighbors. To quantify the epicenter likelihood across the cortex, the nodes were first ranked based on their atrophy values and their neighbors' atrophy values. Epicenter likelihood ranking of each node was then defined as its mean ranking in the two lists. (c, d) Left panel: Node atrophy value was correlated with the mean atrophy value of its structurally- and functionally-defined neighbors (SC and FC) for FTLDNI (panel c) and GENFI (panel d) datasets. Scatter plots show the correlation for high parcellation resolution. Middle panel: The observed correlation values (depicted by filled circles) were compared to a set of correlations obtained from 10,000 spin tests (depicted by box plots). Asterisks denote statistical significance ($p_{\text{spin}} < 0.05$, two-tailed). The association between node and neighbor atrophy was consistent across resolutions and significantly greater in empirical networks compared to null networks in both datasets. Right panel: Epicenter likelihood rankings are depicted across the cortex. The most likely epicenters with high significant rankings are regions that are mainly located at the bilateral anterior insular cortex and temporal lobes (10,000 spin tests).

leads to the atrophy of the afflicted regions (Fig. 3a). Epicenters are defined as those regions in which misfolded proteins are introduced, allowing us to test which is the most likely epicenter for the observed empirical patterns. As misfolded agents spread through the network, we measure the Pearson correlation between the simulated and empirical (FTLDNI) patterns of atrophy (Fig. 3b; left panel). A region's maximal correlation (r_{max}) is defined

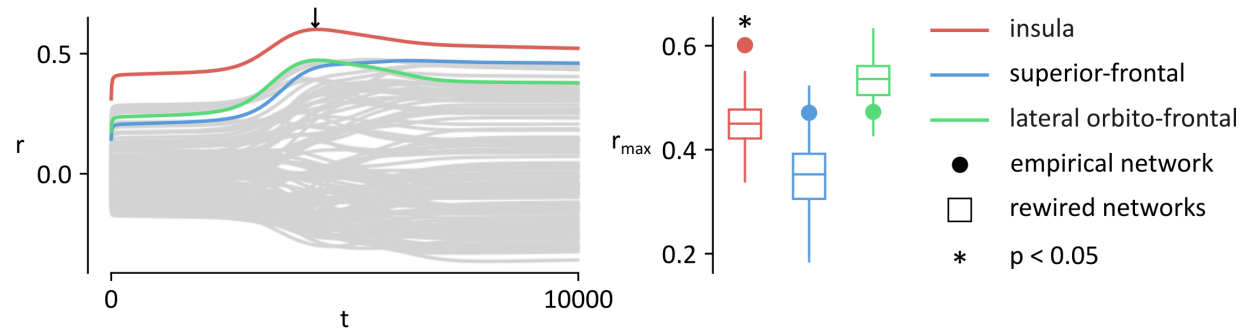
as the largest correlation value observed across all values of t . The three nodes with the largest r_{max} are located in the insular, superior-frontal and lateral orbito-frontal cortex.

An important factor that can influence the probability that a brain region is identified as the epicenter of an atrophy pattern is its spatial location in the brain. To isolate the role of structural connectivity, we com-

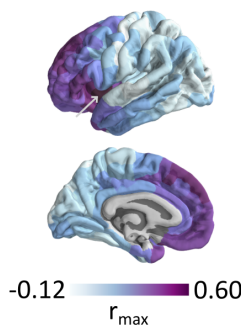
a | S.I.R model



b | model fit



c | r_{\max} distribution



d | best seed region (insula)

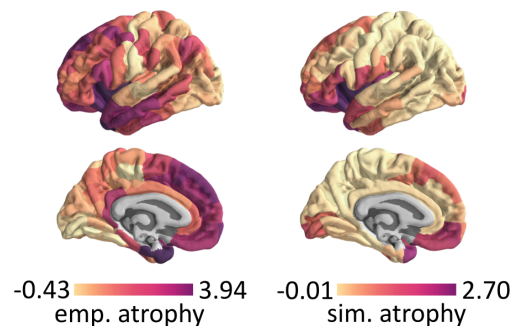
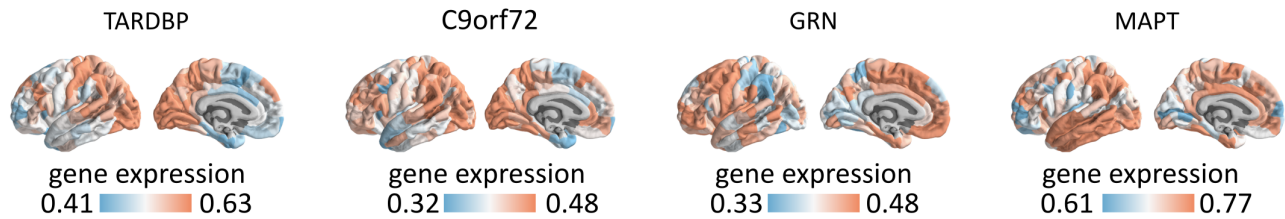


Figure 3. Agent-based modeling | (a) The S.I.R model simulates the spread of pathogenic agents (misfolded proteins) in the brain. Proteins propagate via the structural connections between brain regions and induce atrophy, both pre- and post-synaptically. (b) Left panel: the spreading process was initiated in every brain region and the correlation between the simulated and empirical patterns of atrophy was computed. The three largest correlations were obtained by seeding regions of the insula ($r_{\max} = 0.601$; red), the superior-frontal cortex ($r_{\max} = 0.473$; blue) and lateral orbito-frontal cortex ($r_{\max} = 0.471$; green). The correlations for other brain regions are shown in gray. Right panel: to control for the potential effect of a brain region's spatial embedding, r_{\max} values were compared to r_{\max} correlations obtained using rewired networks that preserve the wiring-cost of the empirical structural network. Asterisks denote statistical significance ($p < 0.05$, two-tailed). The r_{\max} computed by seeding the insula of the empirical network ($r_{\max} = 0.60$) was significantly larger than the r_{\max} computed by seeding the insula of the rewired networks ($p < 0.002$). (c) The largest fit (r_{\max}) obtained by seeding each brain region is shown on the surface of the brain. Larger values of r_{\max} were generally obtained by seeding insular and prefrontal regions. (d) Left panel: empirical pattern of atrophy (FTLDNI). Middle panel: simulated pattern of atrophy producing the maximal fit. This pattern of atrophy was obtained with the insula as the seed, and at $t=4410$ (see the arrow in panel b). Right panel: scatterplot of the relationship between standardized empirical and simulated patterns of atrophy ($r = 0.60$, $p_{\text{spin}} = 0.0013$).

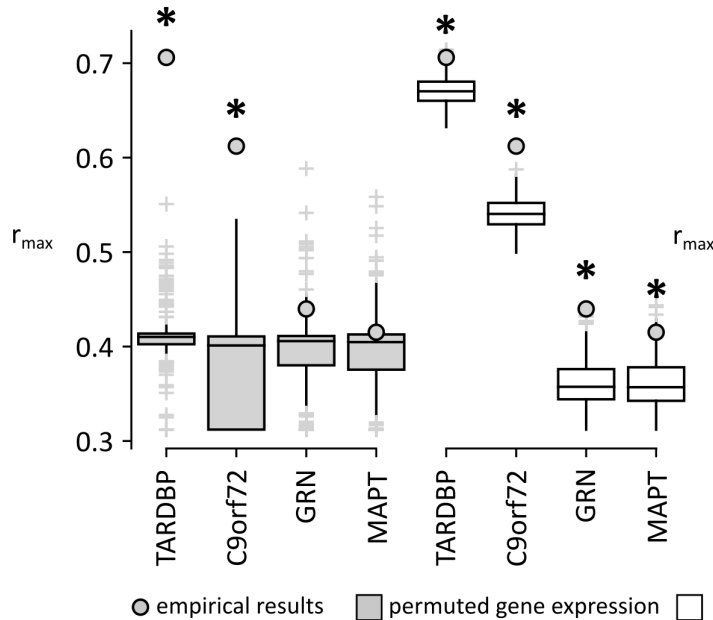
pared these r_{\max} scores to those obtained by simulating the spread of misfolded proteins in rewired networks that preserve the density, degree sequence and wiring cost of the empirical structural network (Fig. 3b; right

panel). We find that the fit obtained by initiating the spread in the insular region of the empirical network is significantly larger than the fit obtained in the rewired networks ($r = 0.601$, $p < 0.002$). In other words, the

a | gene expression



b | FTLDMI



c | GENFI

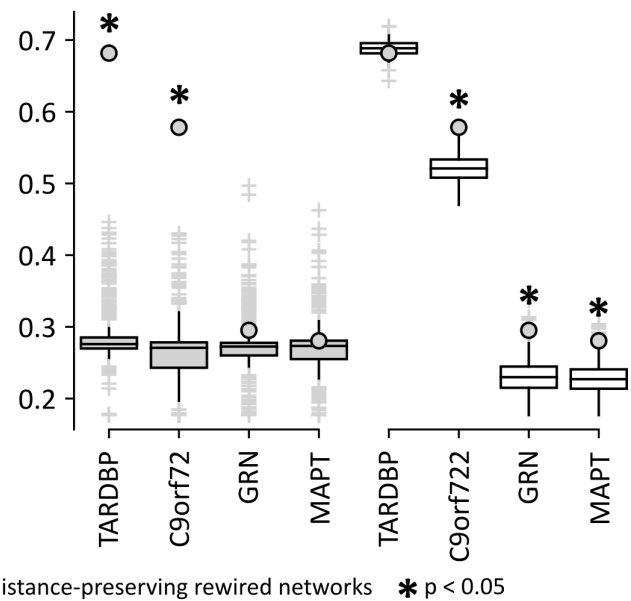


Figure 4. Contribution of gene expression | (a) Vectors of regional gene expression were generated for four genes that have been associated with bvFTD: TARDBP, C9orf72, GRN and MAPT. These vectors of gene expression were incorporated into the S.I.R model. The correlations between empirical atrophy and simulated atrophy, with the insula selected as the seed of the simulated spreading process, were then computed for the FTLDMI dataset (b) and for the GENFI dataset (c). The maximal correlations scores (r_{\max}) obtained for each gene were compared to the maximal correlation scores (r_{\max}) obtained with permuted gene expression vectors (grey boxplots). Asterisks denote statistical significance ($p < 0.05$, two-tailed). For both datasets, we find that the r_{\max} scores obtained by incorporating information about the expression of C9orf72 and TARDBP are significantly larger than those obtained with permuted gene expression vectors ($p < 0.0001$). The maximal correlations are also compared to the maximal correlation scores obtained in null networks (white box plots).

fit observed by seeding the insula is significantly larger than what would have been expected from its degree and spatial position alone and can be attributed to its embedding in the global topology of the network. This result suggests that the topology of the structural connectome plays a significant role in shaping patterns of simulated atrophy that have a high correspondence with the empirical atrophy.

More generally, by looking at the topographic distribution of r_{\max} scores, we find that the brain regions that show the largest fits are located in the insular, medial prefrontal and anterior temporal cortices (Fig. 3c). These results are in accordance with our finding that these regions have large epicenter likelihood rankings. Fig. 3d shows the empirical pattern of atrophy for the FTLDMI

dataset. This pattern is compared to the simulated pattern of atrophy producing the maximal fit. This largest fit was obtained by seeding the insula and was measured at $t = 4410$. We find a significant relationship between the two distributions ($r = 0.60$, $p_{\text{spin}} = 0.0013$). Results are presented for the FTLDMI dataset, but similar results are found in the GENFI dataset (Fig. S3).

Contribution of gene expression to network spreading

Given the contribution of genetic variants to bvFTD [25], we next assessed whether the incorporation of gene expression information into the S.I.R model can enhance the fits. We used regional microarray expression data from the Allan Human Brain Atlas [28] to generate vec-

tors of gene expression for four genes that have been previously associated with bvFTD: MAPT, GRN, C9orf72 and TARDBP [41]. Fig. 4a shows the topographic distributions of these genes. We used this genetic information to set regional heterogeneity for the clearance and synthesis of proteins in the model. We used the insula as the seed region of the spreading process as it is the region that showed the largest fit to the empirical data.

For both FTLDMI (Fig. 4b) and GENFI (Fig. 4c) datasets, we measured the r_{\max} scores obtained by incorporating regional expression for each of the four genes. With MAPT, GRN, C9orf72 and TARDBP, we obtain correlation scores of $r_{\max} = 0.42$, $r_{\max} = 0.44$, $r_{\max} = 0.61$ and $r_{\max} = 0.71$ for the FTLDMI dataset, and $r_{\max} = 0.28$, $r_{\max} = 0.30$, $r_{\max} = 0.58$ and $r_{\max} = 0.68$ for the GENFI dataset. We find that adding regional heterogeneity for synthesis and clearance using expression of C9orf72 and TARDBP increased model fit while the incorporation of information regarding the regional expression of GRN and MAPT decreased model fit. To investigate the significance of the findings, we randomly permuted the vectors of gene expression 10,000 times to generate null distributions of r_{\max} scores that we compared to the empirical results. We find that the scores obtained with C9orf72 and TARDBP are significantly larger than those obtained with permuted gene expression vectors ($p < 0.0001$). These results suggest that C9orf72 and TARDBP may play a significant role in driving the spatial patterning of the empirical atrophy.

To investigate the relationship between gene expression and the brain's structural connectivity, we compared the fits to those obtained using rewired networks preserving the wiring-cost of the empirical network. For C9orf72, we find that the fits obtained using the empirical networks were significantly larger than the fits obtained using rewired null networks, for both FTLDMI ($p < 0.002$) and GENFI ($p < 0.002$). This result suggests that for both sporadic bvFTD and genetic bvFTD, the topology of the structural connectome has a positive influence on the increase in model fit observed when incorporating C9orf72 into our model. For TARDBP, we find that the fits obtained using the empirical networks were significantly larger than the fits obtained using rewired null networks for FTLDMI ($p = 0.014$), but not for GENFI ($p = 0.508$). This result suggests that the topology of the structural connectome appears to have a positive influence on the increase in model fit observed when trying to fit our model to empirical atrophy patterns associated to sporadic bvFTD, but not when trying to fit our model to empirical atrophy patterns associated to genetic bvFTD.

Discussion

The present report provides a comprehensive and statistically robust model supporting the theory of network-based atrophy in bvFTD, both in sporadic and genetic forms. Our findings are consistent across two datasets and the genetic/sporadic heterogeneity. Namely, for both

sporadic and genetic variants, there is a strong correlation between node deformation and the mean of neighbor deformation defined by both structural and functional connectivity, supporting the theory that atrophy progresses through network-based connections. Similar findings were observed at small (219) and large (1000) cortical parcellation resolutions. Data-driven epicenter mapping identified the bilateral anterior insular cortex, as well as ventromedial cortex and antero-temporal areas as potential epicenters. The involvement of the antero-medial areas as epicenters ties into previous research showing that data-driven atrophy subtypes include a “semantic appraisal network” predominant group [27, 44]. The genetic bvFTD cohort showed a very similar profile of most likely epicenters, with the addition of some dorsal frontal areas. The role of these regions as epicenters was further supported by the agent-based spreading model.

The localization of cortical atrophy was most significant in the limbic resting state network, and less present in the visuospatial network (expectedly given its posterior localization). There was significant atrophy in the default mode network (DMN) in genetic FTD, with a positive trend in sporadic FTD. Of note, the salience network which has been previously identified as being predominantly involved in bvFTD [51, 66] did not show statistically significant atrophy. However, when looking at von Economo cytoarchitectonic classes, the insular cortex was the most affected, with relative sparing of the primary sensory neurons. This suggests that the insular cortex plays a central role in the disease, but not necessarily by spreading through the entire ventral attention network including its most posterior regions. In addition, while there have been some reports of opposite connectivity pattern of changes in the salience versus the DMN in bvFTD and AD [66], our results rather suggest that there is significant involvement of DMN regions in bvFTD.

Finally, although exploratory, using a simulation-based approach and gene expression profile data from the Allen Human Brain Atlas, we identified that the C9orf72 and TARDBP gene expression could play a role in the propagation of atrophy in sporadic bvFTD. Indeed, factoring an impact on clearance and synthesis of both genes related to TDP-43 improved the fit between the modeling spreading models and the actual atrophy maps based on DBM. While we cannot exclude that some subjects in the FTLDMI had an unidentified C9orf72 mutation, the involvement of TARDBP is of interest given that that mutations in this gene constitute only a very small fraction of genetic FTD. Results suggest that the activity of this gene could play a role in sporadic bvFTD, which could be of interest for future therapeutic avenues. In future studies, it would be of interest to model the role of genes in the spread of atrophy within each genetic subgroup separately, including all clinical phenotypes.

This study has several strengths including the replication across two separate samples of genetic and spo-

radic bvFTD. DBM is a robust method to capture atrophic changes in patients with neurodegenerative dementia. The present findings were replicated in two separate samples of genetic and sporadic bvFTD and were validated using a range of methodological choices. We also confirmed that the findings are independent from potential confounding factors such as spatial distance and parcellation resolution. However, there are several methodological considerations that need to be taken into account when interpreting the findings. First, there are no available molecular techniques to directly measure FTL changes in vivo. To overcome this limitation, we opted to use DBM to estimate atrophy in bvFTD patients since it is a robust method to capture local changes in brain tissue volume. Second, diffusion spectrum imaging and streamline tractography were used to estimate structural connectivity networks. Although this approach is widely applied to reconstruct human structural connectome using non-invasive neuroimaging data, it is prone to false positives and negatives in defining white matter connections [29, 55]. Third, we identified potential disease epicenters using cross sectional data and undirected networks, therefore it is not possible to precisely assess the propagation process of pathology across the connectome architecture. Modeling disease progression and spread of atrophy across brain networks over time remains an exciting open question that could potentially be addressed by investigating a longitudinal sample of FTD patients using the methods presented here. Fourth, the two datasets included in this study have different demographics and clinical variables (e.g., age range, sex, education, disease severity, etc.). However, the results were mainly consistent across the two datasets, confirming that the findings are robust against those differences. Finally, the structural and functional connectivity networks used in this study are measured in a sample of young healthy population rather than FTD patients. We used these networks as a healthy underlying architecture that may allow pathogen transmission between the connected regions. However, it is possible that the connectome architecture itself would also be compromised during the course of the disease progression, rerouting or restricting the spread of pathology. This could be further investigated in future studies using simultaneous measures of regional atrophy and changes in structural and functional connectivity in a longitudinal sample of FTD patients.

Summary

Altogether, structural and functional connectivity networks and rigorous statistical analyses that account for spatial autocorrelation and network embedding are used in the present study to demonstrate that bvFTD-related neurodegeneration is conditioned by connectome architecture, accounting for 30-40% of variance in atrophy, as well as local transcriptomic vulnerability. FTD-related atrophy appears to be particularly targeting regions asso-

ciated with the anterior insular cortex, but it is likely that there are multiple potential epicenters leading to bvFTD clinical phenotypes. The similarity between genetic and sporadic forms of bvFTD suggests that multiple pathological changes are constrained by the network architecture in the spread of atrophy, explaining why many different pathological and genetic entity lead to the same clinical syndrome. Although exploratory, our results suggest that TARDBP gene expression could have a significant contribution to disease progression, particularly in sporadic bvFTD.

Methods

Participants

We retrieved data from subjects with bvFTD and cognitively normal controls (CNCs) from the Frontotemporal Lobar Degeneration Neuroimaging Initiative (FTLDNI) database that had T1-weighted (T1w) MRI scans matching with each clinical visit (<http://4rtmni-ftldni.ini.usc.edu/>). The inclusion criteria for bvFTD patients were a diagnosis of possible or probable bvFTD according to the FTD consortium criteria [46], resulting in 70 patients with bvFTD (mostly sporadic) and 123 CNCs available for analyses. Several patients had more than one scan therefore there was a total of 156 scans in the bvFTD group and the 326 in the CNC group. We also accessed data from the third data freeze (12/2017) of the Genetic Frontotemporal Dementia Initiative 2 (GENFI2 - <http://genfi.org.uk/>), which includes 23 centers in the UK, Europe and Canada [48]. GENFI2 participants include known symptomatic carriers of a pathogenic mutation in C9orf72, GRN or MAPT and their first-degree relatives who are at risk of carrying a mutation, but who did not show any symptoms (i.e., at-risk subjects). Healthy first-degree relatives who were found to be non-carriers of a mutation are considered as CNCs. Since the aim of the present study was to study network propagation of atrophy in the bvFTD clinical phenotype, presymptomatic carriers and symptomatic carriers whose clinical diagnosis was other than bvFTD were excluded. This GENFI2 cohort included 75 patients with bvFTD and 247 CNCs. Demographic and clinical characteristics of those two cohorts are described in Table. 1. Two-sample t-tests were conducted to examine demographic and clinical variables at baseline. Categorical variables were analyzed using chi-square analyses. Results are expressed as mean \pm standard deviation and median [interquartile range] as appropriate.

MRI acquisition and processing

For the FTLDNI cohort, 3.0T MRIs were acquired at three sites (T1w MPRAGE, TR=2 ms, TE=3 ms, IT=900 ms, flip angle 9°, matrix 256x240, slice thickness 1mm, voxel size 1mm³). For the GENFI2 sample, volumetric T1w MPRAGE MRI was obtained at multiple centers us-

ing the GENFI imaging protocol on either Siemens Trio 3T, SiemensSkyra3T, Siemens1.5T, Phillips3T, General Electric (GE) 1.5T or GE 3T scanners. Scan protocols were designed at the outset of the study to ensure adequate matching between the scanners and image quality control.

All T1w scans were pre-processed through our longitudinal pipeline that includes image denoising, intensity non-uniformity correction and image intensity normalization into range (0-100) using histogram matching [5, 14, 16, 53]. The image processing tools used in this study were designed to process data from multi-site studies to handle biases due to multi-site scanning and they have been successfully applied to a number of multi-site projects [9, 17, 18, 63]. Each native T1w volume from each time point was linearly registered first to the subject-specific template which was then registered to the ICBM152 template. All images were then non-linearly registered to the ICBM152 template using ANTs diffeomorphic registration pipeline [6]. The images were visually assessed by two experienced raters (MD and ALM) to exclude cases with significant imaging artifacts (e.g., motion, incomplete field of view) or inaccurate linear/nonlinear registrations. This visual quality control was completed blind to the diagnosis. Out of 1724 scans, only 43 (2.5%, 36 scans in GENFI2, and 7 in FTLNFI) were rejected. This resulted in a total of 515 subjects that were included to perform cross-sectional morphometric analyses.

Deformation-based morphometry (DBM) analyses

DBM [3, 4] analysis was performed using Montreal Neurological Institute (MNI) MINC tools [33]. The local deformations, obtained from the non-linear transformations mapping the MNI-ICBM152-2009c template to the subject's MRI, encode the local tissue volume difference between the MNI average template and subject's brain. The determinant of the Jacobian of the deformation field is measured at each voxel. Determinant values larger than 1.0 indicate that the local volume in the subject is larger than the average template (e.g., ventricular or sulci enlargement in the case of FTD). Determinant values smaller than one indicate that the local volume in the subject is smaller than the template. The latter is often interpreted as tissue atrophy despite the use of only cross-sectional data. DBM was used to assess voxel-wise cross-sectional group related volumetric differences. To obtain a voxel-wise map reflecting the patterns of difference between bvFTD and CNCs, the following mixed effects model was applied on a voxel-by-voxel basis, separately for each dataset:

$$DBM \sim 1 + Dx + AGE + SEX + (1/SITE) \quad (1)$$

The mixed effects model included age as a continuous fixed variable and diagnosis (Dx) and sex as fixed categorical variables. Site was included as a categorical

random variable. The variable of interest was diagnosis, reflecting the brain regions that were significantly different between bvFTD and CNCs, controlling for age and sex. Statistical t-maps were extracted from the model and used for the rest of the analyses throughout the manuscript. Finally, the t-statistics were multiplied by -1 such that higher positive values correspond to higher atrophy and negative values correspond to volume expansion.

Anatomical parcellation

Statistical t-maps obtained through DBM analysis and mixed effects models were parcellated into 219 and 1000 approximately equally sized cortical regions or parcels using the Cammoun atlas [11], a multiresolution extension of the anatomical Desikan-Killiany atlas [20]. We refer to 219 and 1000 parcellation resolutions as low and high parcellation resolutions, respectively. The parcel-wise t-statistics (i.e., atrophy) were estimated as the mean t-statistic of all the voxels that were assigned to that parcel according to the atlas. We repeated all the analyses at both parcellation resolutions to ensure that results are replicable across multiple spatial scales.

Structural and functional network reconstruction

Connection patterns from healthy individuals are used to represent the architecture of brain networks for the distributed atrophy patterns that are observed in bvFTD patients. Structural and functional connectivity data of 70 healthy individuals (mean age 28.8 ± 9.1 years) were obtained from a publicly available dataset [26]. Details about data acquisition parameters and pre-processing analysis are available in [26]. Briefly, the participants were scanned in a 3T MRI scanner (Trio, Siemens Medical, Germany) using a 32-channel head-coil. The session protocol included: (1) a magnetization-prepared rapid acquisition gradient echo (MPRAGE) sequence sensitive to white/gray matter contrast (1-mm in-plane resolution, 1.2-mm slice thickness); (2) a DSI (diffusion spectrum imaging) sequence (128 diffusion-weighted volumes and a single b_0 volume, maximum b -value 8,000 s/mm^2 , $2.2 \times 2.2 \times 3.0$ mm voxel size); and (3) a gradient echo EPI sequence sensitive to BOLD (blood-oxygen-level-dependent) contrast (3.3-mm in-plane resolution and slice thickness with a 0.3-mm gap, TR 1,920 ms, resulting in 280 images per participant). Diffusion spectrum imaging data and deterministic streamline tractography were used to construct structural connectivity networks for each healthy individual. Each pair-wise structural connection was weighted by the log-transform of the fiber density. Individual structural connectivity networks were parcellated into the low and high parcellation resolutions using the Cammoun atlas described before. Resting-state functional MRI data collected in the same healthy individuals (with eyes open) were used to construct functional connectivity networks. The pre-

processed resting-state functional MRI time series were also parcellated using both the low and high resolution versions of the Cammoun atlas and were correlated to estimate functional connectivity between pairs of brain regions using Pearson correlation coefficients. Finally, a consensus group-average structural connectivity preserving the edge length distributions in individual networks was constructed [8, 37, 38] and a group-average functional connectivity was estimated as the mean pairwise connectivity across individuals.

Network atrophy

Group-average structural and functional connectivity networks were used to estimate average atrophy values of neighbors of each brain region [52]. Briefly, neighbors of a given brain region were defined as regions that are connected to it with a structural connection for both structurally- and functionally- defined neighbors. The structurally-connected neighbor atrophy value of each brain region was then estimated as the average weighted atrophy values of all the neighbors of that region:

$$A_i = \frac{1}{N_i} \sum_{j \neq i, j=1}^{N_i} a_j \times SC_{ij} \quad (2)$$

where A_i is the average neighbor atrophy value of brain region or node i , a_j is atrophy of j -th neighbor of node i , SC_{ij} is the strength of structural connection between nodes i and j , and N_i is the total number of neighbors that are connected to node i with a structural connection (i.e., node degree). Normalization by term N_i ensures that the estimated neighbor atrophy value is independent from the node degree. The neighbor atrophy estimation excludes self-connections ($j \neq i$). The functionally-connected neighbor atrophy values were estimated using the same equation as above, with the exception that regional atrophy values were weighted by the strength of functional connections between nodes i and j (FC_{ij}):

$$A_i = \frac{1}{N_i} \sum_{j \neq i, j=1}^{N_i} a_j \times FC_{ij} \quad (3)$$

For both structurally- and functionally-defined neighbor atrophy estimates, neighbors were defined as nodes that were structurally connected to the node under consideration. Altogether, a single neighbor atrophy value was estimated for each region. We used Pearson correlation coefficients to assess the relationship between node atrophy and mean neighbor atrophy for structurally- and functionally-defined neighbors, separately (Fig. 2a).

Data-driven epicenter analysis

To identify potential disease epicenters, we hypothesized that an epicenter would be a node with high atro-

phy that is also connected to highly atrophied neighbors, compared to a high atrophy node with healthy neighbors, or a healthy node with atrophied neighbors. Using a data-driven approach [52], we first ranked the nodes based on their estimated regional atrophy values. We also ranked the nodes based on the average atrophy values of their neighbors in a separate list. We then calculated the average ranking of each node in the two lists and identified nodes that were highly ranked in both lists (i.e., nodes with both high local and neighborhood average rankings) as the potential epicenters (Fig. 2b).

Agent-based spreading model

Simulation-based epicenter analysis

To investigate the transneuronal spread hypothesis, we simulated the spread of misfolded proteins on the left hemisphere of the low-resolution weighted consensus structural connectivity network (111 regions) using a Susceptible-Infected-Removed (S.I.R) agent-based model [64]. Briefly, the model consists of simulating the misfolding of normal proteins in the cortex and their trans-neuronal spreading through the structural connections between brain regions. The accumulation of misfolded proteins, which act as pathogenic agents, then leads to the atrophy of the afflicted regions. Importantly, this model incorporates synthesis and clearance rates, which can heterogeneously vary across brain regions. More details about the model's main equations can be found in the *Supplemental Information*. To explore the likelihood that a brain region acts as an epicenter of this spreading process, we first used baseline clearance and synthesis rates for all regions. We simulated the spread of misfolded proteins and the resulting atrophy using, one at a time, each individual brain region as the seed of the process. For each seed region, and at each time point, we then computed the Pearson correlation between the simulated and empirical patterns of atrophy.

Gene expression

To investigate the potential role of gene expression in shaping the modelled patterns of atrophy, we accessed the Allen Human Brain Atlas (AHBA [28]; <http://human.brain-map.org/>), which provides regional microarray expression data from six post-mortem brains (1 female, ages 24-57, 42.5 ± 13.38). We used the atlas to generate vectors storing gene expression scores for each of the 111 regional parcel of the left hemisphere. More specifically, we focused on four vectors of gene expression associated with genes that have been previously linked to bvFTD, namely MAPT, GRN, C9orf72 and TARDBP. Given that subjects were selected based on their clinical phenotype (bvFTD) rather than on a specific pathological subtype or genetic mutation, we explored

the potential role of the expression of all four genes for both synthesis and clearance. As such, vectors of gene expression were used to specify the synthesis and clearance rate of each brain region, such that a greater expression score entailed a greater synthesis and clearance rate. Our objective was to identify potentially new mechanistic processes underlying the spreading of atrophy, particularly in sporadic bvFTD where we do not have adequate knowledge of the contribution of genes related to the various proteinopathies.

The AHBA data was pre-processed and mapped to the parcellated brain regions using the abagen toolbox [34] (<https://github.com/rmarkello/abagen>). During pre-processing, we first updated the MNI coordinates of tissue samples to those generated via non-linear alignment to the ICBM152 template anatomy (<https://github.com/chrisgorgo/alleninf>). We also reannotated the microarray probe information for all genes using data provided by [2]. We then filtered the probes by only retaining those that have a proportion of signal to noise ratio greater than 0.5. When multiple probes indexed the expression of the same gene, we selected the one with the most consistent pattern of regional variation across donors. Samples were then assigned to individual regions in the Cammoun atlas. If a sample was not found directly within a parcel, the nearest sample, up to a 2mm-distance, was selected. If no samples were found within 2mm of the parcel, we used the sample closest to the centroid of the empty parcel across all donors. To reduce the potential for misassignment, sample-to-region matching was constrained by hemisphere and gross structural divisions (i.e., cortex, subcortex/brainstem, and cerebellum, such that e.g., a sample in the left cortex could only be assigned to an atlas parcel in the left cortex). All tissue samples not assigned to a brain region in the provided atlas were discarded. Tissue sample expression scores were then normalized across genes using a scaled robust sigmoid function [24], and were rescaled to a unit interval. Expression scores were also normalized across tissue samples using the same procedure. We then aggregated the microarray samples belonging to the same regions by computing the mean expression across samples for individual parcels, for each donor. Regional expression profiles were finally averaged across donors.

Null models

To assess the statistical significance of the node-neighbor relationships and the epicenter analysis, we

used a spatial autocorrelation preserving null model (i.e., “spin tests” [1, 35]). We first used the Connectome Mapper toolkit ([19]; <https://github.com/LTS5/cmp>) to generate a surface-based representation of the Cammoun atlas (both low and high resolution) on the Freesurfer fsaverage surface. We then defined the spatial coordinates of each parcel by selecting the vertex on the spherical projection of the generated fsaverage surface that was closest to the center of mass of the parcel [52, 57]. Finally, we used the resulting parcel spatial coordinates to generate null models of brain maps (e.g., atrophy maps, epicenter rankings) by randomly rotating the maps and reassigning node values with the values of closest parcels. The rotations were first applied to one hemisphere and the mirrored rotations were used for the other hemisphere. This procedure was repeated 10,000 times to generate a null distribution of brain maps with preserved spatial autocorrelation.

To ensure that the observed correlation between the empirical and simulated atrophy map from the agent-based model is explained by the topological organization of the structural connection between brain regions and not solely by the spatial embedding of brain regions, we generated surrogate networks that preserve the geometry of the structural connectome. The edges of the consensus network were first binned according to inter-regional Euclidean distance. Within each length bin, pairs of edges were then selected at random and swapped [7]. This procedure was repeated 500 times, generating a population of rewired structural networks that preserve the degree sequence of the original network and that approximately preserve the edge length distribution (i.e., wiring cost) of the empirical network.

Acknowledgments

This research was undertaken thanks in part to funding from the Canada First Research Excellence Fund, awarded to McGill University for the Healthy Brains for Healthy Lives initiative. BM acknowledges support from the Natural Sciences and Engineering Research Council of Canada (NSERC Discovery Grant RGPIN #017-04265) and from the Canada Research Chairs Program. GS acknowledges support from the Natural Sciences and Engineering Research Council of Canada (NSERC) and the Fonds de recherche du Québec - Nature et Technologies (FRQNT).

[1] Alexander-Bloch, A. F., Shou, H., Liu, S., Satterthwaite, T. D., Glahn, D. C., Shinohara, R. T., Vandekar, S. N., and Raznahan, A. (2018). On testing for spatial correspondence between maps of human brain structure and function. *Neuroimage*, 178:540–551.

[2] Arnatkevičiūtė, A., Fulcher, B. D., and Fornito, A. (2019). A practical guide to linking brain-wide gene expression and neuroimaging data. *Neuroimage*, 189:353–367.

[3] Ashburner, J. and Friston, K. J. (2000). Voxel-based morphometry—the methods. *Neuroimage*, 11(6):805–821.

- [4] Ashburner, J., Hutton, C., Frackowiak, R., Johnsrude, I., Price, C., and Friston, K. (1998). Identifying global anatomical differences: Deformation-based morphometry. *Human brain mapping*, 6(5-6):348–357.
- [5] Aubert-Broche, B., Fonov, V. S., García-Lorenzo, D., Mouiha, A., Guizard, N., Coupé, P., Eskildsen, S. F., and Collins, D. L. (2013). A new method for structural volume analysis of longitudinal brain mri data and its application in studying the growth trajectories of anatomical brain structures in childhood. *Neuroimage*, 82:393–402.
- [6] Avants, B. B., Epstein, C. L., Grossman, M., and Gee, J. C. (2008). Symmetric diffeomorphic image registration with cross-correlation: evaluating automated labeling of elderly and neurodegenerative brain. *Medical image analysis*, 12(1):26–41.
- [7] Betzel, R. F. and Bassett, D. S. (2018). Specificity and robustness of long-distance connections in weighted, interareal connectomes. *Proceedings of the National Academy of Sciences*, 115(21):E4880–E4889.
- [8] Betzel, R. F., Griffa, A., Hagmann, P., and Mišić, B. (2019). Distance-dependent consensus thresholds for generating group-representative structural brain networks. *Network neuroscience*, 3(2):475–496.
- [9] Boucetta, S., Salimi, A., Dadar, M., Jones, B. E., Collins, D. L., and Dang-Vu, T. T. (2016). Structural brain alterations associated with rapid eye movement sleep behavior disorder in parkinson’s disease. *Scientific reports*, 6(1):1–11.
- [10] Brown, J. A., Deng, J., Neuhaus, J., Sible, I. J., Sias, A. C., Lee, S. E., Kornak, J., Marx, G. A., Karydas, A. M., Spina, S., et al. (2019). Patient-tailored, connectivity-based forecasts of spreading brain atrophy. *Neuron*, 104(5):856–868.
- [11] Cammoun, L., Gigandet, X., Meskaldji, D., Thiran, J. P., Sporns, O., Do, K. Q., Maeder, P., Meuli, R., and Hagmann, P. (2012). Mapping the human connectome at multiple scales with diffusion spectrum mri. *Journal of neuroscience methods*, 203(2):386–397.
- [12] Carbonell, F., Iturria-Medina, Y., and Evans, A. C. (2018). Mathematical modeling of protein misfolding mechanisms in neurological diseases: a historical overview. *Frontiers in Neurology*, 9:37.
- [13] Cash, D. M., Bocchetta, M., Thomas, D. L., Dick, K. M., van Swieten, J. C., Borroni, B., Galimberti, D., Masellis, M., Tartaglia, M. C., Rowe, J. B., et al. (2018). Patterns of gray matter atrophy in genetic frontotemporal dementia: results from the genfi study. *Neurobiology of aging*, 62:191–196.
- [14] Collins, D. L., Neelin, P., Peters, T. M., and Evans, A. C. (1994). Automatic 3d intersubject registration of mr volumetric data in standardized talairach space. *Journal of computer assisted tomography*, 18(2):192–205.
- [15] Cope, T. E., Rittman, T., Borchert, R. J., Jones, P. S., Vatansever, D., Allinson, K., Passamonti, L., Vazquez Rodriguez, P., Bevan-Jones, W. R., O’Brien, J. T., et al. (2018). Tau burden and the functional connectome in alzheimer’s disease and progressive supranuclear palsy. *Brain*, 141(2):550–567.
- [16] Coupé, P., Yger, P., Prima, S., Hellier, P., Kervrann, C., and Barillot, C. (2008). An optimized blockwise nonlocal means denoising filter for 3-d magnetic resonance images. *IEEE transactions on medical imaging*, 27(4):425–441.
- [17] Dadar, M., Fonov, V. S., Collins, D. L., Initiative, A. D. N., et al. (2018). A comparison of publicly available linear mri stereotaxic registration techniques. *Neuroimage*, 174:191–200.
- [18] Dadar, M., Maranzano, J., Ducharme, S., Collins, D. L., Initiative, A. D. N., et al. (2019). White matter in different regions evolves differently during progression to dementia. *Neurobiology of aging*, 76:71–79.
- [19] Daducci, A., Gerhard, S., Griffa, A., Lemkaddem, A., Cammoun, L., Gigandet, X., Meuli, R., Hagmann, P., and Thiran, J.-P. (2012). The connectome mapper: an open-source processing pipeline to map connectomes with mri. *PloS one*, 7(12):e48121.
- [20] Desikan, R. S., Ségonne, F., Fischl, B., Quinn, B. T., Dickerson, B. C., Blacker, D., Buckner, R. L., Dale, A. M., Maguire, R. P., Hyman, B. T., et al. (2006). An automated labeling system for subdividing the human cerebral cortex on mri scans into gyral based regions of interest. *Neuroimage*, 31(3):968–980.
- [21] Ducharme, S., Dols, A., Laforce, R., Devenney, E., Kumfor, F., van den Stock, J., Dallaire-Théroux, C., Seelaar, H., Gossink, F., Vijverberg, E., et al. (2020). Recommendations to distinguish behavioural variant frontotemporal dementia from psychiatric disorders. *Brain*, 143(6):1632–1650.
- [22] Fornito, A., Zalesky, A., and Breakspear, M. (2015). The connectomics of brain disorders. *Nature Reviews Neuroscience*, 16(3):159–172.
- [23] Freeze, B., Acosta, D., Pandya, S., Zhao, Y., and Raj, A. (2018). Regional expression of genes mediating trans-synaptic alpha-synuclein transfer predicts regional atrophy in parkinson disease. *NeuroImage: Clinical*, 18:456–466.
- [24] Fulcher, B. D. and Fornito, A. (2016). A transcriptional signature of hub connectivity in the mouse connectome. *Proceedings of the National Academy of Sciences*, 113(5):1435–1440.
- [25] Greaves, C. V. and Rohrer, J. D. (2019). An update on genetic frontotemporal dementia. *Journal of neurology*, 266(8):2075–2086.
- [26] Griffa, A., Alemán-Gómez, Y., and Hagmann, P. (2019). Structural and functional connectome from 70 young healthy adults [data set]. *Zenodo*.
- [27] Guo, C. C., Gorno-Tempini, M. L., Gesierich, B., Henry, M., Trujillo, A., Shany-Ur, T., Jovicich, J., Robinson, S. D., Kramer, J. H., Rankin, K. P., et al. (2013). Anterior temporal lobe degeneration produces widespread network-driven dysfunction. *Brain*, 136(10):2979–2991.
- [28] Hawrylycz, M. J., Lein, E. S., Guillozet-Bongaarts, A. L., Shen, E. H., Ng, L., Miller, J. A., Van De Lagemaat, L. N., Smith, K. A., Ebbert, A., Riley, Z. L., et al. (2012). An anatomically comprehensive atlas of the adult human brain transcriptome. *Nature*, 489(7416):391–399.
- [29] Jones, D. K., Knösche, T. R., and Turner, R. (2013). White matter integrity, fiber count, and other fallacies: the do’s and don’ts of diffusion mri. *Neuroimage*, 73:239–254.
- [30] Jucker, M. and Walker, L. C. (2013). Self-propagation of pathogenic protein aggregates in neurodegenerative diseases. *Nature*, 501(7465):45–51.
- [31] Kim, E.-J., Hwang, J.-H. L., Gaus, S. E., Nana, A. L., Deng, J., Brown, J. A., Spina, S., Lee, M. J., Ramos, E. M., Grinberg, L. T., et al. (2020). Evidence of corticofugal tau spreading in patients with frontotemporal dementia. *Acta neuropathologica*, 139(1):27–43.

- [32] Kim, E.-J., Sidhu, M., Gaus, S. E., Huang, E. J., Hof, P. R., Miller, B. L., DeArmond, S. J., and Seeley, W. W. (2016). Selective Frontotemporal von Economo Neuron and Fork Cell Loss in Early Behavioral Variant Frontotemporal Dementia. *Cerebral Cortex*, 26(4):1843–1843.
- [33] Manera, A. L., Dadar, M., Collins, D. L., Ducharme, S., Initiative, F. L. D. N., et al. (2019). Deformation based morphometry study of longitudinal mri changes in behavioral variant frontotemporal dementia. *Neuroimage: Clinical*, 24:102079.
- [34] Markello, R. D., Arnatkevičiūtė, A., Poline, J.-B., Fulcher, B. D., Fornito, A., and Misić, B. (2021). Standardizing workflows in imaging transcriptomics with the abagen toolbox. *bioRxiv*.
- [35] Markello, R. D. and Misić, B. (2021). Comparing spatial null models for brain maps. *NeuroImage*, 236:118052.
- [36] Meeter, L. H., Kaat, L. D., Rohrer, J. D., and Van Swieten, J. C. (2017). Imaging and fluid biomarkers in frontotemporal dementia. *Nature Reviews Neurology*, 13(7):406–419.
- [37] Mišić, B., Betzel, R. F., Griffa, A., De Reus, M. A., He, Y., Zuo, X.-N., Van Den Heuvel, M. P., Hagmann, P., Sporns, O., and Zatorre, R. J. (2018). Network-based asymmetry of the human auditory system. *Cerebral Cortex*, 28(7):2655–2664.
- [38] Mišić, B., Betzel, R. F., Nematzadeh, A., Goni, J., Griffa, A., Hagmann, P., Flammini, A., Ahn, Y.-Y., and Sporns, O. (2015). Cooperative and competitive spreading dynamics on the human connectome. *Neuron*, 86(6):1518–1529.
- [39] Onyike, C. U. and Diehl-Schmid, J. (2013). The epidemiology of frontotemporal dementia. *International Review of Psychiatry*, 25(2):130–137.
- [40] Peng, C., Trojanowski, J. Q., and Lee, V. M.-Y. (2020). Protein transmission in neurodegenerative disease. *Nature Reviews Neurology*, 16(4):199–212.
- [41] Rademakers, R., Neumann, M., and Mackenzie, I. R. (2012). Advances in understanding the molecular basis of frontotemporal dementia. *Nature Reviews Neurology*, 8(8):423–434.
- [42] Raj, A. and Powell, F. (2018). Models of network spread and network degeneration in brain disorders. *Biological Psychiatry: Cognitive Neuroscience and Neuroimaging*, 3(9):788–797.
- [43] Raj, A. and Powell, F. (2021). Network model of pathology spread recapitulates neurodegeneration and selective vulnerability in huntington’s disease. *NeuroImage*, 235:118008.
- [44] Ranasinghe, K. G., Rankin, K. P., Pressman, P. S., Perry, D. C., Lobach, I. V., Seeley, W. W., Coppola, G., Karydas, A. M., Grinberg, L. T., Shany-Uri, T., et al. (2016). Distinct subtypes of behavioral variant frontotemporal dementia based on patterns of network degeneration. *JAMA neurology*, 73(9):1078–1088.
- [45] Ranasinghe, K. G., Toller, G., Cobigo, Y., Chiang, K., Callahan, P., Eliazar, C., Kramer, J. H., Rosen, H. J., Miller, B. L., and Rankin, K. P. (2021). Computationally derived anatomic subtypes of behavioral variant frontotemporal dementia show temporal stability and divergent patterns of longitudinal atrophy. *Alzheimer’s & Dementia: Diagnosis, Assessment & Disease Monitoring*, 13(1):e12183.
- [46] Rascovsky, K., Hodges, J. R., Knopman, D., Mendez, M. F., Kramer, J. H., Neuhaus, J., Van Swieten, J. C., Seelaar, H., Dopfer, E. G., Onyike, C. U., et al. (2011). Sensitivity of revised diagnostic criteria for the behavioural variant of frontotemporal dementia. *Brain*, 134(9):2456–2477.
- [47] Ratnavalli, E., Brayne, C., Dawson, K., and Hodges, J. (2002). The prevalence of frontotemporal dementia. *Neurology*, 58(11):1615–1621.
- [48] Rohrer, J. D., Nicholas, J. M., Cash, D. M., van Swieten, J., Dopfer, E., Jiskoot, L., van Minkelen, R., Rombouts, S. A., Cardoso, M. J., Clegg, S., et al. (2015). Presymptomatic cognitive and neuroanatomical changes in genetic frontotemporal dementia in the genetic frontotemporal dementia initiative (genfi) study: a cross-sectional analysis. *The Lancet Neurology*, 14(3):253–262.
- [49] Scholtens, L. H., de Reus, M. A., de Lange, S. C., Schmidt, R., and van den Heuvel, M. P. (2018). An mri von economo–koskinas atlas. *NeuroImage*, 170:249–256.
- [50] Seeley, W. W. (2017). Mapping neurodegenerative disease onset and progression. *Cold Spring Harbor Perspectives in Biology*, 9(8):a023622.
- [51] Seeley, W. W., Zhou, J., and Kim, E.-J. (2012). Frontotemporal dementia: what can the behavioral variant teach us about human brain organization? *The Neuroscientist*, 18(4):373–385.
- [52] Shafiei, G., Markello, R. D., Makowski, C., Talpalaru, A., Kirschner, M., Devenyi, G. A., Guma, E., Hagmann, P., Cashman, N. R., Lepage, M., et al. (2020). Spatial patterning of tissue volume loss in schizophrenia reflects brain network architecture. *Biological psychiatry*, 87(8):727–735.
- [53] Sled, J. G., Zijdenbos, A. P., and Evans, A. C. (1998). A nonparametric method for automatic correction of intensity nonuniformity in mri data. *IEEE transactions on medical imaging*, 17(1):87–97.
- [54] Suárez, L. E., Markello, R. D., Betzel, R. F., and Misić, B. (2020). Linking structure and function in macroscale brain networks. *Trends in Cognitive Sciences*, 24(4):302–315.
- [55] Thomas, C., Frank, Q. Y., Irfanoglu, M. O., Modi, P., Saleem, K. S., Leopold, D. A., and Pierpaoli, C. (2014). Anatomical accuracy of brain connections derived from diffusion mri tractography is inherently limited. *Proceedings of the National Academy of Sciences*, 111(46):16574–16579.
- [56] Váša, F., Seidlitz, J., Romero-Garcia, R., Whitaker, K. J., Rosenthal, G., Vértes, P. E., Shinn, M., Alexander-Bloch, A., Fonagy, P., Dolan, R. J., et al. (2018). Adolescent tuning of association cortex in human structural brain networks. *Cerebral Cortex*, 28(1):281–294.
- [57] Vázquez-Rodríguez, B., Suárez, L. E., Markello, R. D., Shafiei, G., Paquola, C., Hagmann, P., Van Den Heuvel, M. P., Bernhardt, B. C., Spreng, R. N., and Misić, B. (2019). Gradients of structure–function tethering across neocortex. *Proceedings of the National Academy of Sciences*, 116(42):21219–21227.
- [58] Vértes, P. E., Rittman, T., Whitaker, K. J., Romero-Garcia, R., Váša, F., Kitzbichler, M. G., Wagstyl, K., Fonagy, P., Dolan, R. J., Jones, P. B., et al. (2016). Gene transcription profiles associated with inter-modular hubs and connection distance in human functional magnetic resonance imaging networks. *Philosophical Transactions of the Royal Society B: Biological Sciences*, 371(1705):20150362.
- [59] von Economo, C. F. and Koskinas, G. N. (1925). *Die cytoarchitektonik der hirnrinde des erwachsenen menschen*. J. Springer.
- [60] Warren, J. D., Rohrer, J. D., and Hardy, J. (2012). Disintegrating brain networks: from syndromes to molecular

- nexopathies. *Neuron*, 73(6):1060–1062.
- [61] Warren, J. D., Rohrer, J. D., Schott, J. M., Fox, N. C., Hardy, J., and Rossor, M. N. (2013). Molecular nexopathies: a new paradigm of neurodegenerative disease. *Trends in neurosciences*, 36(10):561–569.
 - [62] Yeo, B., Krienen, F. M., Sepulcre, J., Sabuncu, M. R., Lashkari, D., Hollinshead, M., Roffman, J. L., Smoller, J. W., Zöllei, L., Polimeni, J. R., et al. (2011). The organization of the human cerebral cortex estimated by intrinsic functional connectivity. *Journal of neurophysiology*, 106(3):1125–1165.
 - [63] Zeighami, Y., Ulla, M., Iturria-Medina, Y., Dadar, M., Zhang, Y., Larcher, K. M.-H., Fonov, V., Evans, A. C., Collins, D. L., and Dagher, A. (2015). Network structure of brain atrophy in de novo parkinson’s disease. *elife*, 4:e08440.
 - [64] Zheng, Y.-Q., Zhang, Y., Yau, Y., Zeighami, Y., Larcher, K., Misić, B., and Dagher, A. (2019). Local vulnerability and global connectivity jointly shape neurodegenerative disease propagation. *PLoS biology*, 17(11):e3000495.
 - [65] Zhou, J., Gennatas, E. D., Kramer, J. H., Miller, B. L., and Seeley, W. W. (2012). Predicting regional neurodegeneration from the healthy brain functional connectome. *Neuron*, 73(6):1216–1227.
 - [66] Zhou, J., Greicius, M. D., Gennatas, E. D., Growdon, M. E., Jang, J. Y., Rabinovici, G. D., Kramer, J. H., Weiner, M., Miller, B. L., and Seeley, W. W. (2010). Divergent network connectivity changes in behavioural variant frontotemporal dementia and alzheimer’s disease. *Brain*, 133(5):1352–1367.

Supplemental Information

The S.I.R model

The S.I.R model has been previously used to explore the spreading of pathological proteins in Parkinson disease [64]. The model is described at length in the original paper. The code of the model can be found at https://github.com/yingqiuz/SIR_simulator. This section briefly summarizes the model's main equations.

The initial step of this model consists in determining the baseline regional density of some protein of interest in individual parcels of the network. To do so, we increment the population of normal agents (i.e., proteins) in region i , N_i , with

$$\Delta N_i = \alpha_i S_i \Delta t - (1 - e^{-\beta_i \Delta t}) N_i \quad (4)$$

where α_i and β_i are respectively the synthesis and clearance rate of the protein in region i . S_i corresponds to the size (voxel count) of region i and Δt is the time interval between two iterations, which is set to 0.02.

After the system reaches the stable point (error tolerance $\epsilon < 10^{-7}$), the pathogenic spread of misfolded proteins is initiated and the population of normal (N) and misfolded (M) agent is updated with

$$\Delta N_i = \alpha_i S_i \Delta t - (1 - e^{-\beta_i \Delta t}) N_i - (e^{-\beta_i \Delta t})(1 - e^{-\gamma_i^0 M_i \Delta t}) N_i \quad (5)$$

$$\Delta M_i = (e^{-\beta_i \Delta t})(1 - e^{-\gamma_i^0 M_i \Delta t}) N_i - (1 - e^{-\beta_i \Delta t}) M_i \quad (6)$$

where γ_i^0 is the baseline transmission rate that measures the likelihood that a single misfolded agent can transmit the infection to other susceptible agents. This baseline transmission rate was set to $1/S_i$.

For each iteration, agents in region i may remain in the region or may enter one of its edges according to a multinomial distribution with probabilities

$$P_{\text{region } i \rightarrow \text{region } j} = \rho_i \quad (7)$$

$$P_{\text{region } i \rightarrow \text{edge}(i,j)} = (1 - \rho_i) \frac{w_{ij}}{\sum_j w_{ij}} \quad (8)$$

where w_{ij} is the connection strength of edge (i, j) . The probability of remaining in the current region, ρ_i , was

set to 0.99. Analogously, the agents in edge (i, j) may exit the edge or remain in the same edge per unit of time with binary probabilities:

$$P_{\text{edge}(i,j) \rightarrow \text{region}(j)} = \frac{1}{l_{ij}} \quad (9)$$

$$P_{\text{edge}(i,j) \rightarrow \text{edge}(i,j)} = 1 - \frac{1}{l_{ij}} \quad (10)$$

where l_{ij} is the length of edge (i, j) .

We use $N_{i,j}$ and $M_{i,j}$ to denote the normal/misfolded population in edge (i, j) . For each interval of time Δt , the increments of N_i , M_i in region i are

$$\Delta N_i = \sum_j \frac{1}{l_{ji}} N_{(j,i)} \Delta t - (1 - \rho_i) N_i \Delta t \quad (11)$$

$$\Delta M_i = \sum_j \frac{1}{l_{ji}} M_{(j,i)} \Delta t - (1 - \rho_i) M_i \Delta t \quad (12)$$

Likewise,

$$\Delta N_{(i,j)} = (1 - \rho_i) \frac{w_{ij}}{\sum_j w_{ij}} N_i \Delta t - \frac{1}{l_{ij}} N_{(i,j)} \Delta t \quad (13)$$

$$\Delta M_{(i,j)} = (1 - \rho_i) \frac{w_{ij}}{\sum_j w_{ij}} M_i \Delta t - \frac{1}{l_{ij}} M_{(i,j)} \Delta t \quad (14)$$

Finally, we model neuronal tissue loss (L) as the result of 2 processes: direct toxicity from accumulation of native misfolded proteins and deafferentation (reduction in neuronal inputs) from neuronal death in neighboring (connected) regions. The atrophy accrual at t within Δt in region i is given by the sum of the two processes:

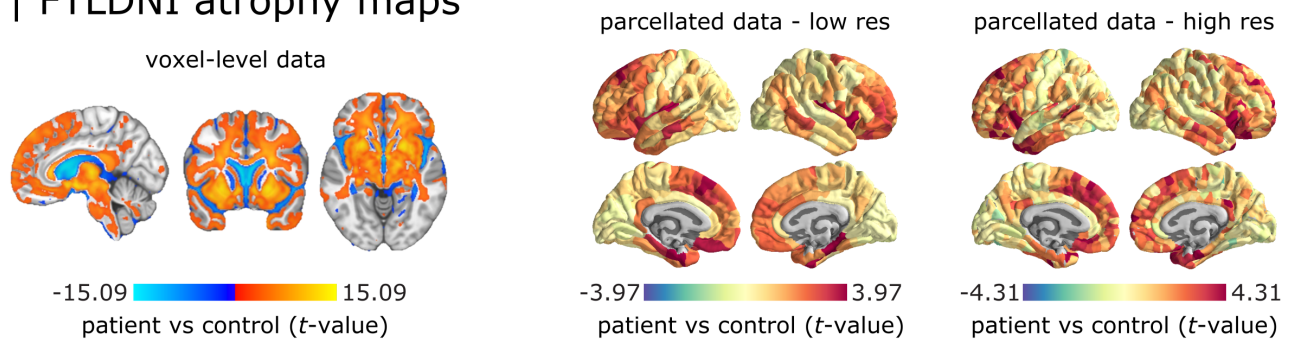
$$\Delta L_i = k_1 (1 - e^{r_i(t) \Delta t}) + k_2 \sum_j \frac{w_{ij}}{\sum_j w_{ij}} (1 - e^{-r_j(t-1) \Delta t}) \quad (15)$$

Where $r_i(t)$ is the proportion of misfolded agents in region i at time t . k_1 and k_2 are both set to 0.5 such that the 2 processes have equal importance in modelling the total atrophy growth. A list of the free parameters that have been used can be found in Table. S1.

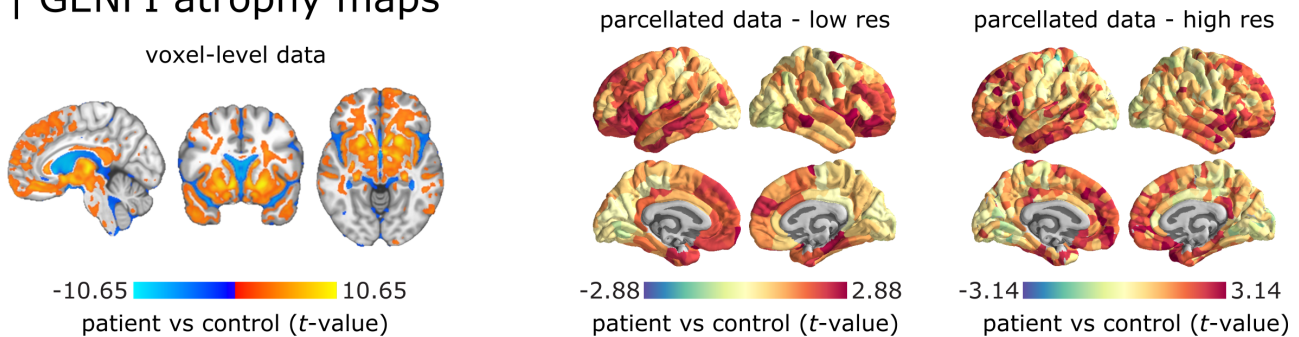
TABLE S1. **Parameters of the S.I.R model** | Values of the free parameters of the S.I.R model used in this study are listed. For a complete list of all the parameters or notations used in the model, see [64].

Notation	Name	Expression or value	Explanation
Δt	time step	$\Delta t = 0.02$	Time increments in the simulations
α_i	synthesis rate in region i	See <i>Methods</i> section	Probability that a new normal agent gets synthesized in each voxel of region i per unit time
β_i	clearance rate in region i	See <i>Methods</i> section	Probability that an existing agent (either normal or misfolded) in region i gets cleared per unit time
ρ_i	the probability of remaining in region i	$\rho_i = 0.99$ for all i	Agents in region i have equal probability of remaining in region i or exiting region i per unit time
k_1	weight of atrophy accrual due to accumulation of misfolded agents	$k_1 = k_2 = 0.5$	The contribution of native misfolded agents to total atrophy growth
k_2	weight of atrophy accrual due to deafferentation	$k_1 = k_2 = 0.5$	The contribution of deafferentation to total atrophy growth
w_{ij}	Connection strength between regions i and j	Log-transform of streamline density	
l_{ij}	Connection length between regions i and j	Euclidean length of streamline fibers	

a | FTLDNI atrophy maps



b | GENFI atrophy maps



c | healthy connectivity networks

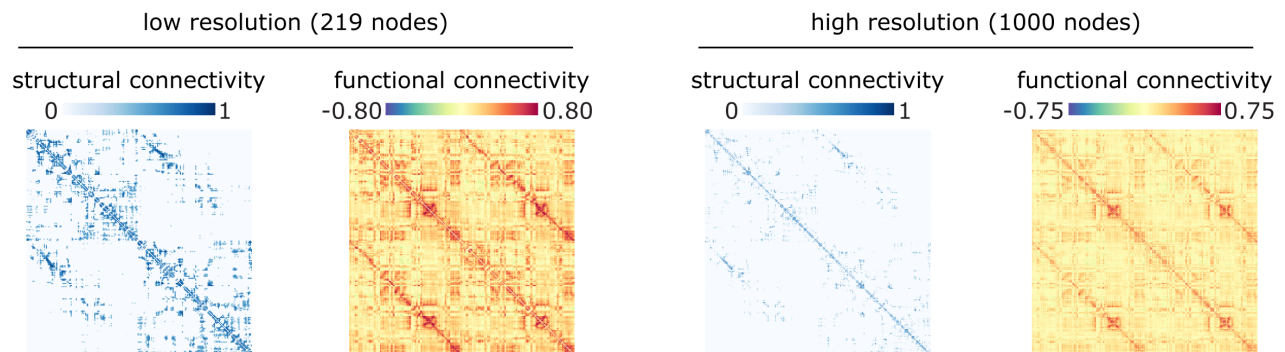
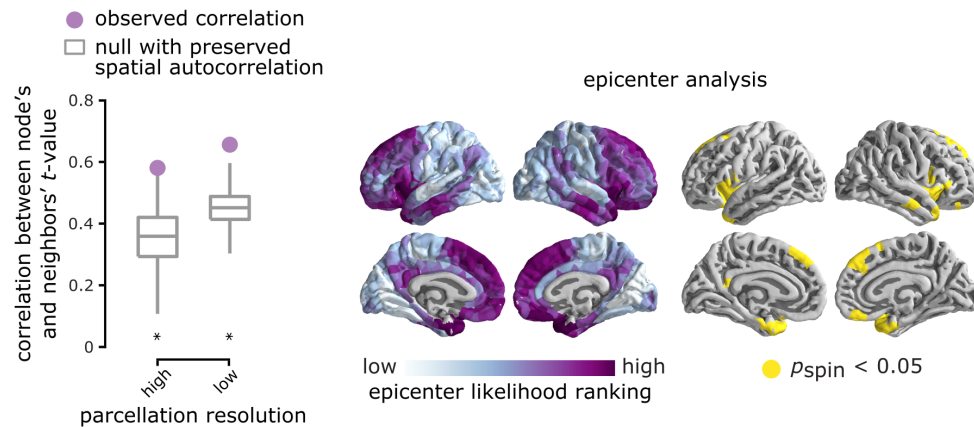


Figure S1. **bvFTD atrophy maps and healthy connectivity networks** | Voxel-level and parcellated atrophy maps are shown for (a) FTLDNI and (b) GENFI datasets. The voxel-level data are displayed on the MNI-ICBM152 template ($x = -5$, $y = 13$, $z = -6$). Greater t -values correspond to greater atrophy in bvFTD patients relative to healthy control subjects. The parcellated data are displayed on brain surface at 95% intervals for both low and high parcellation resolutions (219 and 1000 nodes, respectively). (c) Group-average structural and functional connectivity networks, derived from an independent sample of 70 healthy participants [26], are shown for low and high parcellation resolutions. Each pair-wise structural and functional connection correspond to the mean log-transform of the fiber density and the mean Pearson correlation coefficient between regional resting-state functional MRI time series across individuals, respectively.

a | FTLDNI



b | GENFI

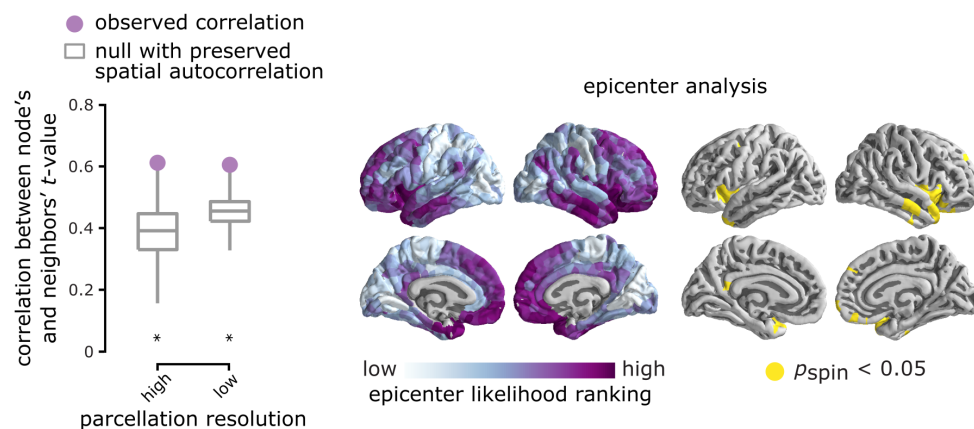


Figure S2. Network-dependent atrophy using binary structural connectivity | Binarized structural connectivity was used to estimate the SC-defined mean neighbor atrophy (i.e., t-value) for (a) FTLDNI and (b) GENFI datasets. More specifically, the neighbor atrophy values were not weighted by the strength of structural connectivity. Left panel: Atrophy of a node was correlated with the mean atrophy of its connected neighbors. The observed correlation values (depicted by filled circles) were compared to a set of correlations obtained from 10,000 spin tests (depicted by box plots). Asterisks denote statistical significance ($p_{\text{spin}} < 0.05$, two-tailed). The association between node and neighbor atrophy was consistent across resolutions and significantly greater in empirical networks compared to null networks in both datasets. Right panel: Epicenter analysis was repeated using the binarized structural connectivity network. Epicenter likelihood rankings are depicted across the cortex. The most likely epicenters with high significant rankings are regions that are mainly located at the bilateral anterior insular cortex and temporal lobes (10,000 spin tests). The results are consistent with the original analysis where SC-defined neighbors were weighted by structural connectivity (Fig. 2).

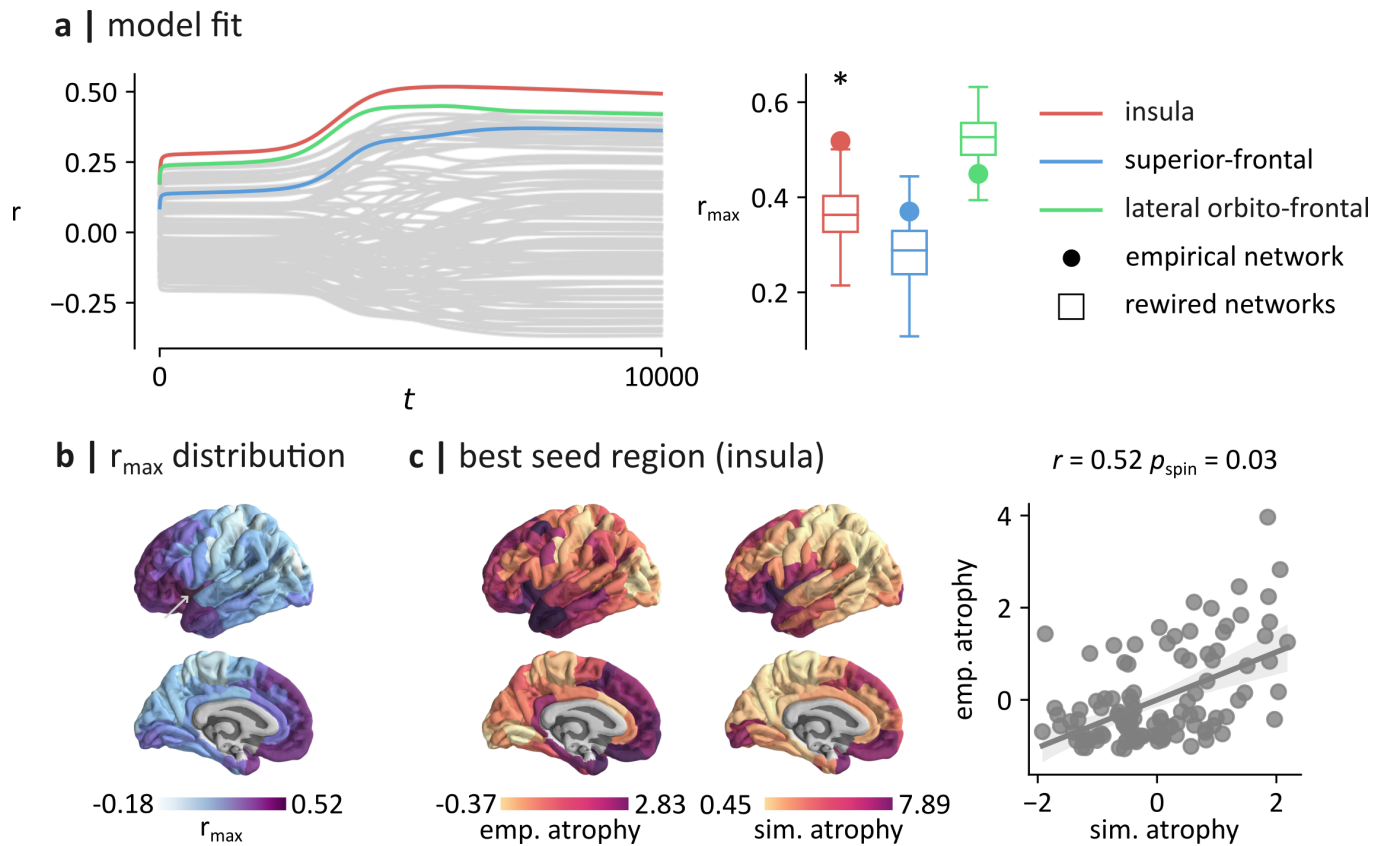


Figure S3. Simulation-based epicenter analysis using the GENFI dataset | (a) Left panel: the spreading process was initiated in every brain region and the correlation between the simulated and empirical patterns of atrophy was computed. The colored lines highlight the correlations obtained by seeding regions of the insula ($r_{\max} = 0.52$; red), the superior-frontal cortex ($r_{\max} = 0.37$; blue) and lateral orbito-frontal cortex ($r_{\max} = 0.45$; green). The correlations for other brain regions are shown in gray. Right panel: to control for the potential effect of a brain region's spatial embedding, r_{\max} values were compared to r_{\max} correlations obtained using rewired networks that preserve the wiring-cost of the empirical structural network. Asterisks denote statistical significance ($p < 0.05$, two-tailed). The r_{\max} computed by seeding the insula of the empirical network ($r_{\max} = 0.52$) was significantly larger than the r_{\max} computed by seeding the insula of the rewired networks ($p = 0.006$). (c) The largest fit (r_{\max}) obtained by seeding each brain region is shown on the surface of the brain. Larger values of r_{\max} were generally obtained by seeding insular and prefrontal regions. (d) Left panel: empirical pattern of atrophy (GENFI). Middle panel: simulated pattern of atrophy producing the maximal fit. This pattern of atrophy was obtained with the insula as the seed, and at $t = 5730$ (see the arrow in panel b). Right panel: scatter plot of the relationship between standardized empirical and simulated patterns of atrophy ($r = 0.52$, $p_{\text{spin}} = 0.03$).

Appendix

List of GENFI consortium members

Author	Affiliation
Aitana Sogorb Esteve	Department of Neurodegenerative Disease, Dementia Research Centre, UCL Queen Square Institute of Neurology, London, UK; UK Dementia Research Institute at University College London, UCL Queen Square Institute of Neurology, London, UK
Annabel Nelson	Department of Neurodegenerative Disease, Dementia Research Centre, UCL Queen Square Institute of Neurology, London, UK
Arabella Bouzigues	Department of Neurodegenerative Disease, Dementia Research Centre, UCL Queen Square Institute of Neurology, London, UK
Carolin Heller	Department of Neurodegenerative Disease, Dementia Research Centre, UCL Queen Square Institute of Neurology, London, UK
Caroline V Greaves	Department of Neurodegenerative Disease, Dementia Research Centre, UCL Queen Square Institute of Neurology, London, UK
David Cash	Department of Neurodegenerative Disease, Dementia Research Centre, UCL Queen Square Institute of Neurology, London, UK
David L Thomas	Neuroimaging Analysis Centre, Department of Brain Repair and Rehabilitation, UCL Institute of Neurology, Queen Square, London, UK
Emily Todd	Department of Neurodegenerative Disease, Dementia Research Centre, UCL Queen Square Institute of Neurology, London, UK
Hanya Benotmane	UK Dementia Research Institute at University College London, UCL Queen Square Institute of Neurology, London, UK
Henrik Zetterberg	UK Dementia Research Institute at University College London, UCL Queen Square Institute of Neurology, London, UK; Department of Psychiatry and Neurochemistry, the Sahlgrenska Academy at the University of Gothenburg, Mölndal, Sweden
Imogen J Swift	Department of Neurodegenerative Disease, Dementia Research Centre, UCL Queen Square Institute of Neurology, London, UK; UK Dementia Research Institute at University College London, UCL Queen Square Institute of Neurology, London, UK
Jennifer Nicholas	Department of Medical Statistics, London School of Hygiene and Tropical Medicine, London, UK
Kiran Samra	Department of Neurodegenerative Disease, Dementia Research Centre, UCL Queen Square Institute of Neurology, London, UK
Lucy L Russell	Department of Neurodegenerative Disease, Dementia Research Centre, UCL Queen Square Institute of Neurology, London, UK
Martina Bocchetta	Department of Neurodegenerative Disease, Dementia Research Centre, UCL Queen Square Institute of Neurology, London, UK
Rachelle Shafei	Department of Neurodegenerative Disease, Dementia Research Centre, UCL Queen Square Institute of Neurology, London, UK
Rhian S Convery	Department of Neurodegenerative Disease, Dementia Research Centre, UCL Queen Square Institute of Neurology, London, UK
Carolyn Timberlake	Department of Clinical Neurosciences, University of Cambridge, Cambridge, UK
Thomas Cope	Department of Clinical Neurosciences, University of Cambridge, Cambridge, UK
Timothy Rittman	Department of Clinical Neurosciences, University of Cambridge, Cambridge, UK
Alberto Benussi	Centre for Neurodegenerative Disorders, Department of Clinical and Experimental Sciences, University of Brescia, Brescia, Italy
Enrico Premi	Stroke Unit, ASST Brescia Hospital, Brescia, Italy
Roberto Gasparotti	Neuroradiology Unit, University of Brescia, Brescia, Italy
Silvana Archetti	Biotechnology Laboratory, Department of Diagnostics, ASST Brescia Hospital, Brescia, Italy
Stefano Gazzina	Neurology, ASST Brescia Hospital, Brescia, Italy
Valentina Cantoni	Centre for Neurodegenerative Disorders, Department of Clinical and Experimental Sciences, University of Brescia, Brescia, Italy
Andrea Arighi	Fondazione IRCCS Ca' Granda Ospedale Maggiore Policlinico, Neurodegenerative Diseases Unit, Milan, Italy; University of Milan, Centro Dino Ferrari, Milan, Italy
Chiara Fenoglio	Fondazione IRCCS Ca' Granda Ospedale Maggiore Policlinico, Neurodegenerative Diseases Unit, Milan, Italy; University of Milan, Centro Dino Ferrari, Milan, Italy
Elio Scarpini	Fondazione IRCCS Ca' Granda Ospedale Maggiore Policlinico, Neurodegenerative Diseases Unit, Milan, Italy; University of Milan, Centro Dino Ferrari, Milan, Italy
Giorgio Fumagalli	Fondazione IRCCS Ca' Granda Ospedale Maggiore Policlinico, Neurodegenerative Diseases Unit, Milan, Italy; University of Milan, Centro Dino Ferrari, Milan, Italy
Vittoria Borracchi	
Giacomina Rossi	Fondazione IRCCS Istituto Neurologico Carlo Besta, Milano, Italy
Giorgio Giaccone	Fondazione IRCCS Istituto Neurologico Carlo Besta, Milano, Italy
Giuseppe Di Fede	Fondazione IRCCS Istituto Neurologico Carlo Besta, Milano, Italy
Paola Caroppo	Fondazione IRCCS Istituto Neurologico Carlo Besta, Milano, Italy
Pietro Tiraboschi	Fondazione IRCCS Istituto Neurologico Carlo Besta, Milano, Italy
Sara Prioni	Fondazione IRCCS Istituto Neurologico Carlo Besta, Milano, Italy
Veronica Redaelli	Fondazione IRCCS Istituto Neurologico Carlo Besta, Milano, Italy
David Tang-Wai	The University Health Network, Krembil Research Institute, Toronto, Canada
Ekaterina Rogaeva	Tanz Centre for Research in Neurodegenerative Diseases, University of Toronto, Toronto, Canada
Miguel Castelo-Branco	Faculty of Medicine, University of Coimbra, Coimbra, Portugal
Morris Freedman	Baycrest Health Sciences, Rotman Research Institute, University of Toronto, Toronto, Canada
Ron Keren	The University Health Network, Toronto Rehabilitation Institute, Toronto, Canada
Sandra Black	Sunnybrook Health Sciences Centre, Sunnybrook Research Institute, University of Toronto, Toronto, Canada
Sara Mitchell	Sunnybrook Health Sciences Centre, Sunnybrook Research Institute, University of Toronto, Toronto, Canada
Christen Shoesmith	Department of Clinical Neurological Sciences, University of Western Ontario, London, Ontario, Canada
Robert Bartha	Department of Medical Biophysics, The University of Western Ontario, London, Ontario, Canada; Centre for Functional and Metabolic Mapping, Roberts Research Institute, The University of Western Ontario, London, Ontario, Canada
Rosa Rademakers	Center for Molecular Neurology, University of Antwerp
Emma van der Ende	Department of Neurology, Erasmus Medical Center, Rotterdam, Netherlands
Jackie Poos	Department of Neurology, Erasmus Medical Center, Rotterdam, Netherlands
Janne M. Papma	Department of Neurology, Erasmus Medical Center, Rotterdam, Netherlands
Lucia Giannini	Department of Neurology, Erasmus Medical Center, Rotterdam, Netherlands
Rick van Minkelen	Department of Clinical Genetics, Erasmus Medical Center, Rotterdam, Netherlands
Yolande Pijnenburg	Amsterdam University Medical Centre, Amsterdam VUmc, Amsterdam, Netherlands
Benedetta Nacmias	Department of Neuroscience, Psychology, Drug Research and Child Health, University of Florence, Florence, Italy; IRCCS Fondazione Don Carlo Gnocchi, Florence, Italy
Camilla Ferrari	Department of Neuroscience, Psychology, Drug Research and Child Health, University of Florence, Florence, Italy
Cristina Polito	Department of Biomedical, Experimental and Clinical Sciences "Mario Serio", Nuclear Medicine Unit, University of Florence, Florence, Italy
Gemma Lombardi	Department of Neuroscience, Psychology, Drug Research and Child Health, University of Florence, Florence, Italy
Valentina Bessi	Department of Neuroscience, Psychology, Drug Research and Child Health, University of Florence, Florence, Italy
Michele Veldsman	Nuffield Department of Clinical Neurosciences, Medical Sciences Division, University of Oxford, Oxford, UK
Christin Andersson	Department of Clinical Neuroscience, Karolinska Institutet, Stockholm, Sweden

Author	Affiliation
Hakan Thonberg	Center for Alzheimer Research, Division of Neurogeriatrics, Karolinska Institutet, Stockholm, Sweden
Linn Öijersted	Center for Alzheimer Research, Division of Neurogeriatrics, Department of Neurobiology, Care Sciences and Society, Bioclinicum, Karolinska Institutet, Solna, Sweden; Unit for Hereditary Dementias, Theme Aging, Karolinska University Hospital, Solna, Sweden
Vesna Jelic	Division of Clinical Geriatrics, Karolinska Institutet, Stockholm, Sweden
Paul Thompson	Division of Neuroscience and Experimental Psychology, Wolfson Molecular Imaging Centre, University of Manchester, Manchester, UK
Tobias Langheinrich	Division of Neuroscience and Experimental Psychology, Wolfson Molecular Imaging Centre, University of Manchester, Manchester, UK; Manchester Centre for Clinical Neurosciences, Department of Neurology, Salford Royal NHS Foundation Trust, Manchester, UK
Albert Lladó	Alzheimer's disease and Other Cognitive Disorders Unit, Neurology Service, Hospital Clínic, Barcelona, Spain
Anna Antonell	Alzheimer's disease and Other Cognitive Disorders Unit, Neurology Service, Hospital Clínic, Barcelona, Spain
Jaume Olives	Alzheimer's disease and Other Cognitive Disorders Unit, Neurology Service, Hospital Clínic, Barcelona, Spain
Mircea Balasa	Alzheimer's disease and Other Cognitive Disorders Unit, Neurology Service, Hospital Clínic, Barcelona, Spain
Nuria Bargalló	Imaging Diagnostic Center, Hospital Clínic, Barcelona, Spain
Sergi Borrego-Ecija	Alzheimer's disease and Other Cognitive Disorders Unit, Neurology Service, Hospital Clínic, Barcelona, Spain
Ana Verdelho	Department of Neurosciences and Mental Health, Centro Hospitalar Lisboa Norte - Hospital de Santa Maria & Faculty of Medicine, University of Lisbon, Lisbon, Portugal
Carolina Maruta	Laboratory of Language Research, Centro de Estudos Egas Moniz, Faculty of Medicine, University of Lisbon, Lisbon, Portugal
Catarina B. Ferreira	Laboratory of Neurosciences, Faculty of Medicine, University of Lisbon, Lisbon, Portugal
Gabriel Miltenberger	Faculty of Medicine, University of Lisbon, Lisbon, Portugal
Frederico Simões do Couto	Faculdade de Medicina, Universidade Católica Portuguesa
Alazne Gabilondo	Cognitive Disorders Unit, Department of Neurology, Donostia University Hospital, San Sebastian, Gipuzkoa, Spain; Neuroscience Area, Biodonostia Health Research Institute, San Sebastian, Gipuzkoa, Spain
Ana Gorostidi	Neuroscience Area, Biodonostia Health Research Institute, San Sebastian, Gipuzkoa, Spain
Jorge Villanua	OSATEK, University of Donostia, San Sebastian, Gipuzkoa, Spain
Marta Cañada	CITA Alzheimer, San Sebastian, Gipuzkoa, Spain
Mikel Tainta	Neuroscience Area, Biodonostia Health Research Institute, San Sebastian, Gipuzkoa, Spain
Miren Zulaica	Neuroscience Area, Biodonostia Health Research Institute, San Sebastian, Gipuzkoa, Spain
Myriam Barandiaran	Cognitive Disorders Unit, Department of Neurology, Donostia University Hospital, San Sebastian, Gipuzkoa, Spain; Neuroscience Area, Biodonostia Health Research Institute, San Sebastian, Gipuzkoa, Spain
Patricia Alves	Neuroscience Area, Biodonostia Health Research Institute, San Sebastian, Gipuzkoa, Spain; Department of Educational Psychology and Psychobiology, Faculty of Education, International University of La Rioja, Logroño, Spain
Benjamin Bender	Department of Diagnostic and Interventional Neuroradiology, University of Tübingen, Tübingen, Germany
Carlo Wilke	Department of Neurodegenerative Diseases, Hertie-Institute for Clinical Brain Research and Center of Neurology, University of Tübingen, Tübingen, Germany; Center for Neurodegenerative Diseases (DZNE), Tübingen, Germany
Lisa Graf	Department of Neurodegenerative Diseases, Hertie-Institute for Clinical Brain Research and Center of Neurology, University of Tübingen, Tübingen, Germany
Annick Vogels	Neurology Service, University Hospitals Leuven, Belgium; Laboratory for Neurobiology, VIB-KU Leuven Centre for Brain Research, Leuven, Belgium
Mathieu Vandenbulcke	Geriatric Psychiatry Service, University Hospitals Leuven, Belgium; Neuropsychiatry, Department of Neurosciences, KU Leuven, Leuven, Belgium
Philip Van Damme	Neurology Service, University Hospitals Leuven, Belgium; Laboratory for Neurobiology, VIB-KU Leuven Centre for Brain Research, Leuven, Belgium
Rose Bruffaerts	Laboratory for Cognitive Neurology, Department of Neurosciences, KU Leuven, Leuven, Belgium; Biomedical Research Institute, Hasselt University, 3500 Hasselt, Belgium
Pedro Rosa-Neto	Translational Neuroimaging Laboratory, McGill Centre for Studies in Aging, McGill University, Montreal, Québec, Canada
Serge Gauthier	Alzheimer Disease Research Unit, McGill Centre for Studies in Aging, Department of Neurology & Neurosurgery, McGill University, Montreal, Québec, Canada
Agnès Camuzat	Sorbonne Université, Paris Brain Institute – Institut du Cerveau – ICM, Inserm U1127, CNRS UMR 7225, AP-HP - Hôpital Pitié-Salpêtrière, Paris, France
Alexis Brice	Sorbonne Université, Paris Brain Institute – Institut du Cerveau – ICM, Inserm U1127, CNRS UMR 7225, AP-HP - Hôpital Pitié-Salpêtrière, Paris, France; Reference Network for Rare Neurological Diseases (ERN-RND)
Anne Bertrand	Sorbonne Université, Paris Brain Institute – Institut du Cerveau – ICM, Inserm U1127, CNRS UMR 7225, AP-HP - Hôpital Pitié-Salpêtrière, Paris, France; Inria, Aramis project-team, F-75013, Paris, France; Centre pour l'Acquisition et le Traitement des Images, Institut du Cerveau et la Moelle, Paris, France
Aurélien Funkiewiez	Centre de référence des démences rares ou précoces, IM2A, Département de Neurologie, AP-HP - Hôpital Pitié-Salpêtrière, Paris, France; Sorbonne Université, Paris Brain Institute – Institut du Cerveau – ICM, Inserm U1127, CNRS UMR 7225, AP-HP - Hôpital Pitié-Salpêtrière, Paris, France
Daisy Rinaldi	Centre de référence des démences rares ou précoces, IM2A, Département de Neurologie, AP-HP - Hôpital Pitié-Salpêtrière, Paris, France; Sorbonne Université, Paris Brain Institute – Institut du Cerveau – ICM, Inserm U1127, CNRS UMR 7225, AP-HP - Hôpital Pitié-Salpêtrière, Paris, France; Département de Neurologie, AP-HP - Hôpital Pitié-Salpêtrière, Paris, France
Dario Saracino	Sorbonne Université, Paris Brain Institute – Institut du Cerveau – ICM, Inserm U1127, CNRS UMR 7225, AP-HP - Hôpital Pitié-Salpêtrière, Paris, France; Inria, Aramis project-team, F-75013, Paris, France; Centre de référence des démences rares ou précoces, IM2A, Département de Neurologie, AP-HP - Hôpital Pitié-Salpêtrière, Paris, France
Olivier Colliot	Sorbonne Université, Paris Brain Institute – Institut du Cerveau – ICM, Inserm U1127, CNRS UMR 7225, AP-HP - Hôpital Pitié-Salpêtrière, Paris, France; Inria, Aramis project-team, F-75013, Paris, France; Centre pour l'Acquisition et le Traitement des Images, Institut du Cerveau et la Moelle, Paris, France
Sabrina Sayah	Sorbonne Université, Paris Brain Institute – Institut du Cerveau – ICM, Inserm U1127, CNRS UMR 7225, AP-HP - Hôpital Pitié-Salpêtrière, Paris, France
Catharina Prix	Neurologische Klinik, Ludwig-Maximilians-Universität München, Munich, Germany
Elisabeth Wlasich	Neurologische Klinik, Ludwig-Maximilians-Universität München, Munich, Germany
Olivia Wagemann	Neurologische Klinik, Ludwig-Maximilians-Universität München, Munich, Germany
Sandra Loosli	Neurologische Klinik, Ludwig-Maximilians-Universität München, Munich, Germany
Sonja Schönecker	Neurologische Klinik, Ludwig-Maximilians-Universität München, Munich, Germany
Tobias Hoegen	Neurologische Klinik, Ludwig-Maximilians-Universität München, Munich, Germany

Author	Affiliation
Jolina Lombardi	Department of Neurology, University of Ulm, Ulm
Sarah Anderl-Straub	Department of Neurology, University of Ulm, Ulm, Germany
Adeline Rollin	CHU, CNR-MAJ, Labex Distalz, LiCEND Lille, France
Gregory Kuchcinski	Univ Lille, France; Inserm 1172, Lille, France; CHU, CNR-MAJ, Labex Distalz, LiCEND Lille, France
Maxime Bertoux	Inserm 1172, Lille, France; CHU, CNR-MAJ, Labex Distalz, LiCEND Lille, France
Thibaud Lebouvier	Univ Lille, France; Inserm 1172, Lille, France; CHU, CNR-MAJ, Labex Distalz, LiCEND Lille, France
Vincent Deramecourt	Univ Lille, France; Inserm 1172, Lille, France; CHU, CNR-MAJ, Labex Distalz, LiCEND Lille, France
Beatriz Santiago	Neurology Department, Centro Hospitalar e Universitario de Coimbra, Coimbra, Portugal
Diana Duro	Faculty of Medicine, University of Coimbra, Coimbra, Portugal
Maria João Leitão	Centre of Neurosciences and Cell Biology, Universidade de Coimbra, Coimbra, Portugal
Maria Rosario Almeida	Faculty of Medicine, University of Coimbra, Coimbra, Portugal
Miguel Tábuas-Pereira	Neurology Department, Centro Hospitalar e Universitario de Coimbra, Coimbra, Portugal
Sónia Afonso	Instituto Ciencias Nucleares Aplicadas a Saude, Universidade de Coimbra, Coimbra, Portugal
Annerose Engel	Clinic for Cognitive Neurology, University Hospital Leipzig, Leipzig, Germany
Maryna Polyakova	Department for Neurology, Max Planck Institute for Human Cognitive and Brain Sciences and Clinic for Cognitive Neurology, University Hospital Leipzig, Leipzig, Germany