

Astrocytic metabolic control of orexinergic activity in the lateral hypothalamus regulates sleep and wake architecture

Alice Braga^{1}, Martina Chiacchiaretta^{1*}, Luc Pellerin², Dong Kong^{1,3}, Philip G. Haydon¹.*

¹Department of Neuroscience, Tufts University School of Medicine, Boston, Massachusetts, 02111, USA.

²Inserm U1313, University and CHU of Poitiers, 86021 Poitiers, France.

³Division of Endocrinology, F.M. Kirby Neurobiology Center, Department of Pediatrics, Boston Children's Hospital and Harvard Medical School, Boston, Massachusetts 02115, USA.

***Contributed equally**

Corresponding authors:

Martina Chiacchiaretta, Ph.D; e-mail: martina.chiacchiaretta@tufts.edu

Philip G. Haydon, Ph.D.; e-mail: philip.haydon@tufts.edu

ABSTRACT

Neuronal activity undergoes significant changes during vigilance states, accompanied by an accommodation of energy demands. While the astrocyte-neuron lactate shuttle has shown that lactate is the primary energy substrate for sustaining neuronal activity in multiple brain regions, its role in regulating sleep/wake architecture is not fully understood. We manipulated the cell-specific expression of monocarboxylate transporters (MCTs), the major lactate transporters, to examine the involvement of astrocytic lactate supply in maintaining consolidated wakefulness. Our results demonstrate that reduced expression of MCT4 in astrocytes disrupts lactate supply to orexin neurons in the lateral hypothalamus (LH), impairing wakefulness stability. We also show that MCT2-mediated lactate uptake is necessary for maintaining tonic firing of orexinergic neurons and stabilizing wakefulness. Our findings provide both *in vivo* and *in vitro* evidence supporting the critical role of astrocyte-to-orexinergic neuron lactate shuttle in regulating proper sleep/wake stability— a crucial step for maintaining physiological functions and overall well-being.

MAIN

Early neuroenergetics studies proposed glucose as the key energy source for neuronal energetic demand, with the classical concept that lactate represents a mere by-product of glycolysis; however, recent evidence highlighted a more essential role for this metabolite¹. Lactate transport in the brain is facilitated by monocarboxylate transporters (MCTs)²: MCT1 expressed by endothelial cells^{3,4} oligodendrocytes⁵ and astrocytes^{6,7}; MCT2 found primarily in neurons⁸ and MCT4 mainly expressed by astrocytes and microglia⁹⁻¹¹. Disrupting the lactate shuttle via pharmacological blockage of MCTs or antisense oligonucleotides has been shown to impair synaptic function in the hippocampus¹², memory processing^{11,13-15}, and motor function¹⁰, supporting the importance of these transporters in several physiological behaviors. *In vivo* studies showed that cerebral lactate in the cortex fluctuates depending on the animal's vigilant state^{16,17}, with a consistent increase upon wakefulness followed by a reduction during sleep^{18,19}. Interestingly, the activity of wake-promoting orexin neurons in the lateral hypothalamus (LH), a brain area involved in sleep/wake cycle control, increases during wakefulness, and decreases during sleep. While exploratory *in vitro* studies showed the excitatory effect of lactate on orexinergic activity²⁰ and their preference for lactate as energy source²¹, several key aspects remain unexplored. These include identifying the specific cellular origin and transporters that give rise to lactate during wakefulness in the LH. Additionally, determining the relevance of lactate through the sleep/wake cycle as an energy source under physiological conditions of glucose availability.

Here, we selectively reduced the expression of astrocytic MCT4 or MCT1 and orexinergic MCT2 in the LH to explore the contribution of each MCT isoform in regulating orexinergic activity and the impact on sleep/wake cycle. By using both *in vivo* electroencephalographic (EEG)/electromyographic (EMG) recordings coupled with real-time lactate biosensor measurements and *in vitro* electrophysiology, we showed that astrocytes shuttle lactate into the extracellular space mainly via MCT4 upon wakefulness and such a mechanism is necessary for promoting orexinergic neurons firing and ultimately to promote wakefulness. We also showed the pivotal role of orexinergic MCT2 in promoting their activity and maintaining wakefulness via lactate uptake. Taken together, our data show the key role for a tight coupled astrocytic-neuronal metabolic communication in maintaining a proper sleep/wake cycle. This is of particular relevance given the significant relationship between impairment of sleep/wake architecture and a wide range of disorders^{22,23}.

RESULTS

Blockage of MCTs or glycogen mobilization in the LH decreases wakefulness in the dark phase

The astrocyte-neuron lactate shuttle (ANLS) hypothesis postulates that astrocytes export lactate into the extracellular milieu as a metabolic substrate for neuronal consumption²⁴; data from our previous work showed that the astrocytic connexin-43 network within the LH is a possible route for trafficking lactate that is critical for maintaining consolidated wakefulness²¹. Nevertheless, the exact role of the ANLS within the LH in regulating sleep and wakefulness is yet to be described. To begin to test the importance of astrocytes as a lactate source in the LH, we pharmacologically inhibited glycogenolysis, since glycogen is a major source of lactate and is exclusively stored in astrocytes^{25,26}. To investigate whether glycogen-derived lactate in the LH is required for sustained wakefulness we used bilateral cannula connected to osmotic mini-pumps, together with EEG/EMG recordings (Fig. 1a), to deliver aCSF followed by the inhibitor of glycogen phosphorylase 1,4-dideoxy-1,4-imino-D-arabinitol (DAB; 10mM) (Fig. 1b). Blockage of glycogenolysis resulted in a 14.56% reduction of time spent in wakefulness, mirrored by a 14.26% increase in time spent in non-rapid eye movement (NREM) during the first hours of the dark phase (ZT12-18) (Fig. 1b and c and Supplementary Fig. 1). This window of sensitivity (ZT 12-18) is consistent with previous studies that have highlighted this period of the dark phase as being particularly sensitive to metabolic disruption in the LH²¹. To test whether lactate was able to restore prolonged wakefulness, we then delivered DAB in combination with L-lactate (DAB 10mM; L-lactate 5mM). Treatment with L-lactate was able to reverse the effect of blockage of glycogenolysis, with 16.54% increase in time spent in wakefulness and 16.33% reduced time in NREM during the first hours of the dark phase (ZT12-18) (Fig. 1b, 1c and Supplementary Fig. 1). No significant differences in number or duration of wake or sleep events were associated with these changes in overall wakefulness architecture (Fig. 1d and e). These data suggest that lactate produced through astrocytic glycogen mobilization promotes wakefulness in the dark phase.

Next, we asked whether MCTs, the major transporters of lactate in the brain, are required for sustained wakefulness. Delivery of the non-selective MCT inhibitor alpha-cyano-4-hydroxycinnamate (4-CIN; 1.5mM) (Fig. 1f) revealed a significant effect during the initial 6 hours of the dark phase, resulting in an 11.96% reduction in time spent in wakefulness (ZT12-18) (Fig. 1g and Supplementary Fig. 1). This was accompanied by an increase in time spent in both NREM (11.57% increase) and rapid eye movement (REM) sleep (0.21% increase) (Fig. 1g and Supplementary Fig.1). In addition, we observed an increase in the number of NREM episodes, as well as in the number and duration of REM episodes during ZT12-18 (Fig. 1h and i). We also detected a 3.51% increase in the time spent in wakefulness during the light phase (Fig. 1g and Supplementary Fig. 1).

Collectively, these results support our previous observations²¹ and suggest that the shuttling of lactate from astrocytes to neurons in the LH is necessary for promoting and maintaining prolonged wakefulness in mice during the dark phase.

Astrocytic MCT4 is required for sustained wakefulness during the dark phase

To further investigate the source of extracellular lactate and its impact on wakefulness, we performed EEG/EMG recordings on mice with astrocyte-specific MCT knockdown. Astrocytes predominantly express two MCT isoforms, MCT4 and MCT1^{6,27}. To discern whether either MCT isoforms contributes to the regulation of sleep-wake cycle within the LH, we employed mice with loxP sites flanking exons 3 to 5 of the *Mct4* gene (MCT4^{f/f}) (Supplementary Fig. 2a) and exon 5 of the *Mct1* gene (MCT1^{f/f})^{28,29} (Supplementary Fig. 2f). MCT4^{f/f} and MCT1^{f/f} mice were injected with PhP.eB-GFAP(0.7)-eGFP-T2A-iCre (aMCT4 KD or aMCT1 KD) or the control virus PhP.eB-GFAP(0.7)-eGFP in the LH (Fig. 2a and Supplementary Fig. 4b). We first assessed astrocyte-specific selectivity by injecting Ai14-reporter mice in the LH with adeno-associated viruses (AAVs) encoding GFAP(0.7)-eGFP-T2A-iCre. Quantification of double positive cells expressing both the endogenous Td-Tomato, expressed upon Cre recombination, and the astrocytic (GFAP) or orexin (Orexin-A) markers showed high selectivity of the GFAP(0.7) promoter for astrocytes (Supplementary Fig. 2b). We next confirmed the excision of the floxed exons upon Cre recombination (Supplementary Fig. 2a and f), followed by an assessment of MCT4 and MCT1 protein expression. Six weeks post viral injection, there were no alterations in MCT4 protein expression (Supplementary Fig. 2c), nor changes in sleep/wake architecture (Supplementary Fig. 2d). However, twelve weeks post viral injection, MCT4 protein expression was reduced by 48% compared to the control group and sleep/wake architecture was perturbed (Supplementary Fig. 3a, Fig. 2b). At this timepoint aMCT4 KD mice showed a 12.40% reduction in wakefulness during ZT12-18 (Fig. 2c), accompanied by an 11.73% increase in NREM sleep (Fig. 2c and Supplementary Fig. 3). aMCT4 KD mice also showed an increased number of shorter wakefulness events and increased number of NREM events during ZT 12-18 (Fig. 2d and e). We asked whether *in vivo* delivery of lactate to the LH would rescue the wakefulness instability induced in aMCT4 KD mice by using bilateral cannula connected to osmotic mini-pumps and EEG/EMG recording (Fig. 2f). Compared to aCSF, the delivery of lactate to aMCT4 KD mice increased wakefulness during the dark phase (Fig. 2g). We observed a 15.76% increase in duration of time spent in wakefulness mirrored by a 15.15% reduction of time spent in NREM during the first hours of the dark phase (ZT12-18; Fig. 2h and Supplementary Fig. 3). We also observed an 11.43% increase of time spent in wakefulness during the second part of the dark phase (ZT18-24) (Fig. 2h and Supplementary Fig. 3). Finally, lactate delivery also resulted in reduced number of NREM events during the first hours of the dark (ZT 12-18) (Fig. 2i). No changes in the duration of events were observed (Fig. 2j).

We then tested the role of astrocytic MCT1, six weeks after viral injections we observed an increased expression of MCT1 protein (Supplementary Fig. 2g) accompanied by no changes in sleep/wake architecture (Supplementary Fig. 2h and i). Given the highly abundant distribution of MCT1 among CNS cells, such as oligodendrocytes⁵ or endothelial cells⁴ we hypothesized an acute compensatory overexpression. Twelve weeks after viral injections, MCT1 expression was reduced by 12% compared to the control group (Supplementary Fig. 4a), however, we did not observe any change in the percentage of time the mice spent awake and in NREM and REM sleep (Supplementary Fig. 4c and d). aMCT1 KD mice showed only an increase in the number of wake events (Supplementary Fig. 4e). We also observed a small increased number of wake events with shorter duration during ZT0-12 (Supplementary Fig. 4f). These data indicate that MCT1 has little to no role in supporting the maintenance of consolidated wakefulness during the dark phase.

Together, these results suggest that astrocytic MCT4 is necessary for maintaining wakefulness during ZT12-18 and consistent with the transport of lactate into the extracellular milieu by MCT4 given that lactate can rescue the aMCT4 KD phenotype.

Orexineric MCT2 is required for consolidated wakefulness

To test the role of orexinergic MCT2, the major monocarboxylate isoform expressed in neurons⁸ in the control of wakefulness, we crossed Orexin-IRES-Cre mice with mice that have loxP sites flanking exons 4 and 5 of MCT2 (MCT2^{f/f})²⁸ to obtain orexin neuron-specific knockdown mice (oMCT2 KD mice) (Fig. 3a and Supplementary Fig. 5a). We first investigated whether early modulation of MCT2 could affect orexin neurons via immunohistochemistry techniques, and we did not observe any changes in the number of Orexin-A positive cells in oMCT2 KD mice compared to control mice (Supplementary Fig. 5b). Twenty-four hours EEG/EMG recording showed that oMCT2 KD mice were unable to sustain consolidated wakefulness (Fig. 3b), characterized by a 20.42% reduction in time spent in wakefulness, an 18.80% increase in time spent in NREM and a 3.46% increase in REM during the first hours of the dark phase (Fig. 3c and Supplementary Fig. 5). oMCT2 KD mice also showed an increased number of NREM events and longer REM episodes during the dark period (Fig. 3d and e).

We then aimed at rescuing the wakefulness phenotype observed in oMCT2 KD mice by viral re-expression of MCT2 in oMCT2 KD mice. Adeno-associated virus (AAV) encoding DIO-mSlc16a7-P2A-GFP was injected in the LH of oMCT2 KD mice to achieve Cre-mediated and orexin neuron-specific expression of MCT2 (Fig. 3f). Twenty-four hours EEG/EMG was recorded prior to and 21 days after viral injection. Re-expression of MCT2 rescued consolidated wakefulness during the first hours of the dark (Fig. 3g), with a 14.77% increase in time spent in wakefulness, accompanied by a 14.32% reduction of time in NREM (Fig. 3h and Supplementary Fig. 5) compared to pre-expression levels. Additionally, MCT2 re-expressed mice also showed a reduced number of REM episodes during the last hours of the dark phase (Fig. 3i), with no changes in the duration of events (Fig. 3j). These data support the notion that orexin neuronal MCT2 is required for sustained wakefulness during the dark period.

Lactate shuttling via MCT4 and MCT2 is required for sustained orexin neuron activity

Orexin neurons in the LH are known to promote wakefulness by increasing their activity during the transition from sleep to wake^{18,30}. To evaluate whether reduced wakefulness observed in aMCT4 KD and oMCT2 KD mice was correlated with changes in orexinergic activity we performed whole-cell recordings from orexin neurons in the hypothalamic brain slices (Fig. 4a, b). Throughout all the recordings the slices were perfused with ACSF containing a physiological concentration of glucose (2.5 mM)³¹. Orexin neurons were discriminated from co-located melanin-concentrating (MCH) neurons present in the same area by their distinct firing patterns. Post-hoc immunostaining against orexin A (Orexin-A), of biocytin-filled neurons confirmed that they were Orexin-A-positive (Supplementary Fig. 6a).

We found a profound decrease in orexinergic activity in whole-cell patch clamp mode in aMCT4 KD accompanied by a more hyperpolarized resting membrane potential compared to control mice (Fig. 4b, c, d). Accordingly, neurons from aMCT4 KD also exhibited a reduction in input resistance, suggesting that the decreased activity was mediated by an increase in ion conductance in these cells (Fig. 4e). To control for the possibility that the dilution of the intracellular compartment by whole-cell dialysis altered the metabolic state of the cell we repeated the same measurements in cell-attached mode. These recordings confirmed a reduction in spontaneous

firing rate in aMCT4 KD to a similar extent to what was observed in whole-cell mode (Supplementary Fig. 6b, c).

We then tested whether deletion of MCT2 impacted orexinergic activity. To verify the selective expression of Cre-recombinase in orexinergic neurons, we performed stereotaxic injections into the LH of Orexin-IRES-cre mice (Control and oMCT2 KD) with an AAV9-CAG-DIO-mCherry virus. Cre-dependent mCherry expression was evaluated through immunostaining for the orexin marker Orexin-A. We found that $94\% \pm 2.1\%$ of mCherry expressing cells were Orexin-A positive and that $85.6\% \pm 4.9\%$ of all orexinergic neurons were mCherry positive (Supplementary Fig. 7a, b). This faithful co-localization of mCherry and Orexin-A in the LH indicates that the expression of Cre-recombinase is specific for orexinergic neurons and that the majority of orexin neurons express Cre-recombinase. Whole-cell patch-clamp recordings revealed a decrease in orexinergic activity, a more hyperpolarized membrane potential in oMCT2 KD compared to control mice (Fig. 4 f, g). A similar reduction in activity persisted in cell-attached mode (Supplementary Fig. 6b, c). Given the role of MCTs in lactate trafficking², we speculated that the decrease in activity observed in orexin neurons was due to a decrease in lactate supply. Thus, we first tested whether bath perfusion of lactate could rescue orexinergic activity in aMCT4 KD mice. We found that bath application of 5 mM lactate induced a membrane potential depolarization of 11 ± 3.3 mV in aMCT4 KD, which was sufficient to increase the activity of orexinergic neurons (Fig. 4i, j), while in control cells extracellular lactate did not affect membrane potential and firing rate suggesting that the endogenous lactate level had reached a plateau at 2.5 mM glucose. (Fig. 4k and Supplementary Fig. 8a, d). These data support the idea that the reduced activity observed in aMCT4 KD was due to an impairment in lactate shuttling. Interestingly, the recovering effect of lactate was abrogated by the extracellular perfusion of 500 μ M 4-CIN, a broad-spectrum inhibitor of MCTs, suggesting that, to modulate orexinergic excitability, lactate needs to be transported rather than acting via an extracellular receptor (Fig. 4j).

To support the observation that maintenance of orexin neurons activity requires lactate internalization, we tested whether the decreased excitability and membrane hyperpolarization observed in oMCT2 KD mice could be restored by extracellular perfusion of 5 mM lactate. We found that lactate was unable to change orexinergic excitability, while tolbutamide, by inhibiting K_{ATP} channel, depolarized and increased the firing rate on the same recorded cells (Fig. 4l, m). Previous studies have demonstrated that lactate acts through K_{ATP} channel³². This channel senses the metabolic state of orexinergic neurons and mediates the hyperpolarization of these cells during an energy shortage³³. Finally, to assess that the excitatory effect of lactate on orexinergic neurons was mediated by K_{ATP} channel, brain slices from aMCT4 KD were perfused with 100 μ M tolbutamide. Extracellular perfusion with tolbutamide increased orexinergic excitability in aMCT4 KD mice but not in control cells (Fig. 4n and Supplementary Fig. 8b, c).

These results suggest that lactate, shuttled by astrocytes through MCT4, needs to be internalized through MCT2 for sustaining orexinergic excitability and the activity of these neurons in oMCT2 KD and aMCT4 KD mice can be rescued by inhibiting K_{ATP} channel activity.

An astrocytic source and neuronal sink of lactate

According to our data, we propose that astrocytes release lactate into the extracellular space via MCT4 where it is taken up into orexin neurons by neuronal MCT2. To test this hypothesis, we determined the change in extracellular lactate concentration during the transition from sleep to wake in KD and control mice. We employed EEG recordings coupled with real-time lactate

biosensor recording in the LH (Fig. 5a) that allowed us to measure the changes in lactate during the transition from sleep to wake events (Fig. 5b).

Analysis of the frequency distribution of lactate increases during wakefulness events in the first hours of the dark (ZT12-18) showed that aMCT4 KD mice were characterized by a significant decrease in extracellular lactate elevation during the transition to wakefulness compared to controls (Fig. 5c) displaying a median value of 0.07 mM in a MCT4 KD compared to 0.20mM in control mice (Fig. 5d). These results are consistent with a reduction in release of lactate into the extracellular space. In contrast, deletion of neuronal MCT2 caused an increase in the wakefulness-dependent lactate transient consistent with an impaired uptake of lactate by orexinergic neurons (Fig. 5e). oMCT2 KD showed a median value corresponding to 0.21 mM compared to 0.15 in control mice (Fig. 5f). These data support the role of astrocytic MCT4 as the main release route to give rise to extracellular lactate surges during wakefulness in the LH, and that orexin neurons are a sink for lactate utilization via MCT2.

DISCUSSION

While there is increasing evidence supporting roles of the ANLS in various brain regions and functions, the cellular mechanism involved in lactate increase and its role as an energy source throughout the sleep/wake cycle needs to be elucidated. Here, we show that astrocytic MCT4, but not MCT1, is necessary for maintaining prolonged wakefulness. We also demonstrate the necessity for lactate to be imported into orexinergic neurons via MCT2 to promote their activity and wakefulness. Finally, we show that despite the availability of physiological glucose, astrocytic lactate is necessary for sustaining orexinergic activity and consolidating wakefulness (Fig. 6a-c).

Our previous work demonstrated the importance of Cx43-mediated networks for sustaining orexin neurons activity and wakefulness²¹. We built upon this evidence to reveal the source and sink of lactate during vigilant states. How is lactate released into the extracellular space and how does it influence wakefulness across the 24 hours? We first hypothesized that glycogen-derived lactate has a prominent role in fueling neuronal activity during sustained wakefulness. Astrocytes can produce lactate both from glycolysis and glycogen turnover^{26,34,35}. Progressive reduction of glycogen granules is associated with progressively longer wake episodes³⁶. We found that pharmacological inhibition of glycogenolysis, by perfusing DAB into the LH, reduced prolonged wakefulness and increased NREM sleep during the dark phase, when mice are mostly awake and active. Consistent with our hypothesis, delivery of lactate into the LH of DAB-treated mice fully restored wakefulness stability. This could be especially relevant because norepinephrine, a known enhancer of arousal, stimulates glycogen metabolism and lactate release from astrocytes^{26,37}. Whether astrocytes are the target of noradrenergic signaling into the LH needs to be fully elucidated. We then demonstrated that pharmacological inhibition of MCTs by perfusing 4-CIN into the LH, decreased wakefulness during the dark phase. This finding confirms the role of lactate exchange in the regulation of wakefulness during this phase. We also detected an effect during the light phase, and it is noteworthy that we cannot exclude off-target effects of 4-CIN, including extracellular and intracellular acidification due to impaired proton transport inhibition³⁸ of mitochondrial pyruvate transport³⁹ or effects on other cell types, rather than astrocytes expressing MCTs.

To further investigate and dissect the cell-specific role of MCTs we employed transgenic mouse lines to selectively downregulate astrocytic MCTs. Downregulation of astrocytic MCT4 resulted in reduced consolidated wakefulness during the dark phase, rescued by delivery of exogenous lactate. Such results are in line with a previous hypothesis suggesting a role of MCT4 as an activity-dependent lactate exporter⁴⁰ and with recent evidence showing MCT4 as the only isoform able to export lactate extracellularly despite elevated levels⁴¹. Accordingly, lactate concentration in various brain regions is higher during the dark phase compared to the light phase⁴²⁻⁴⁴. To further investigate the impact of astrocytic MCT4 downregulation on extracellular lactate changes we employed lactate biosensors measurements coupled with EEG/EMG recordings. In line with previous studies^{16,42,45}, we observed, daily lactate fluctuations, with extracellular lactate reaching a low basal level during sleep and consistently increasing during wakefulness, suggesting that this phenomenon might be common across different brain regions. While our *in vivo* lactate measurements did not allow us to measure absolute concentrations, MCT4 downregulation resulted in reduced surges of extracellular lactate upon wakefulness, corroborating its role as an exporter during the highly active dark phase.

The ANLS hypothesis has long proposed that astrocytes are capable of exporting lactate into the extracellular environment as a metabolic substrate to sustain neuronal activity during high energy-demanding tasks^{10,11,15,24,26,46,47}. Does the reduction of extracellular lactate in aMCT4 KD mice have a downstream effect on neuronal excitability? We hypothesized that arousal instability observed in aMCT4 KD mice was associated with a decreased activity of orexinergic neurons due to impairment in lactate shuttling. Extending previous findings, we found that downregulation of astrocytic MCT4 dramatically hyperpolarized and decreased the firing rate as well as R_{in} of orexinergic neurons. First, the decreased orexinergic excitability is in line with the wakefulness instability observed *in vivo* as orexinergic neurons play a major role in maintaining and promoting wakefulness³⁰, increasing their activity during active wakefulness^{18,19}, and showing frequency-dependent control of vigilant states. Second, these data confirm that lactate released through MCT4 is a necessary metabolic substrate to sustain orexinergic excitability even in the presence of physiological glucose concentration. Consistent with this idea, we found that perfusion of extracellular lactate was sufficient to rescue their activity in brain slices from aMCT4 KD mice. In contrast with recent experimental findings and modeling interpretations⁴⁸, in our experimental conditions, we exclude that the effect of lactate is confounded by changes in osmolarity or by intracellular acidification due to impaired proton transport^{38,49} since we kept all the solutions isosmotic, and we buffered intracellular pH changes with HEPES.

Astrocytic MCT1 has been implicated in basal lactate release⁴⁰, but its exact role in brain functions has yet to be elucidated. In our study, we observed that MCT1 downregulation led to increased fragmented wakefulness during the light phase accompanied by increased events during the dark phase. Such results would be in line with the characterization of MCT1 as an essential exporter in low ambient lactate levels as described during the resting phase⁴⁴, and not as efficient as MCT4 at higher extracellular concentrations during the active phase⁴¹.

Neurons across the brain mainly express MCT2⁸, and have been shown to predominantly import lactate^{11,26}. By selectively downregulating MCT2 in orexinergic neurons, we found that mice were unable to maintain prolonged wakefulness *in vivo* during the dark phase. *In vitro*, deletion of MCT2 in orexinergic neurons decreased firing rate and R_{in} while hyperpolarizing the membrane potential of these neurons. By contrast to what was observed in astrocytic MCT4 downregulation, extracellular lactate was not able to change neuronal activity neither in MCT2 KD mice nor in the presence of 4-CIN, highlighting the crucial role of importing lactate. Further supporting the role of orexinergic neurons as lactate sink, extracellular lactate measurements showed increased surges upon wakefulness in MCT2 KD mice, likely the result of lactate accumulation in the extracellular milieu.

In line with previous evidence demonstrating fragmented wakefulness during the dark phase in orexin-deficient mouse models^{50,51}, we did not observe any phenotype in the light phase in aMCT4 KD and oMCT2 KD mice. This finding confirms the role of orexin neurons and suggests that other neurons in the same area, such as melanin-concentrating hormone neurons (MCH), may not be dependent on astrocytic lactate. In addition, we also identified a consistent role for lactate as a fuel during the first 6 hours of the dark phase. The lack of effects in the latter part (ZT18-24) may indicate reduced orexinergic activity, potentially sustained by glucose or other metabolites. Notably, in our experiments, orexinergic neurons can still use glucose as an energetic source, emphasizing that glucose and lactate are not interchangeable in modulating orexinergic activity and wakefulness. Although embryonic manipulation of MCT2 in orexinergic neurons could be considered a confounding strategy, the re-expression of MCT2 during the adult stage resulted in

the recovery of the wakefulness phenotype. This observation suggests the absence of any developmental impairments.

Finally, orexin neurons express functional K_{ATP} channels^{21,33,52}, composed of Kir6.1 and SUR1 subunits shown to modulate their activity²⁰. As expected, we found that tolbutamide, a selective K_{ATP} blocker, rescued orexinergic firing in both astrocytic and orexinergic neuron MCTs knockdown mice, indicating K_{ATP} channel as the downstream target of the lactate effect. These data are consistent with similar observations made in cortical neurons showing that lactate uptake (via MCT2) and its utilization as energy substrate is key to maintaining their excitability via regulation of K_{ATP} channels³².

Collectively, data obtained from MCT2 knockdown mice reinforce the hypothesis that lactate supports orexinergic firing due to its internalization through MCT2 and its use as an energy substrate, ruling also out the possibility that lactate could exert its effect through the binding to an extracellular receptor.

This is of particular interest since alterations of the sleep-wake cycle and orexinergic activity, as well as degeneration of these neurons, have been reported in several degenerative diseases⁵³ and aging⁵⁴. For instance, one of the earliest symptoms in preclinical Alzheimer's disease (AD) is excessive daytime sleepiness and difficulty in maintaining long periods of consolidated wakefulness^{55,56} resembling the fragmented waking pattern we identified in our transgenic mice lines after deleting astrocytic MCT4 and orexinergic MCT2 in the LH. Concurrently, brain metabolic dysfunctions, marked by abnormal glucose metabolism and glycolytic rate, as well as altered expression of glucose transporters and MCTs, have been also reported in both patients and murine models of AD⁵⁷⁻⁶¹. However, whether these metabolic alterations correlate with the sleep disturbances observed in these pathologies remains to be elucidated. Thus, our findings have the potential to shed new light on the mechanisms underlying sleep disturbances in pathological conditions, paving the way for translation studies aimed at modulating MCTs and brain lactate concentration.

In conclusion, our results provide evidence for the importance of the astrocytic lactate shuttle in regulating sustained wakefulness. By using cell-specific downregulation of MCTs, we demonstrate that astrocytes are a major contributor to lactate export into the extracellular environment where it is available for uptake by orexinergic neurons, modulating their activity and ultimately regulating wakefulness.

Materials and Methods

Animals, housing, genotyping

Male and female mice were bred and housed on a 12/12 light/dark cycle, given standard chow and water ad libitum. Zeitgeber time (ZT) scale, that sets the origin of the 24h period (ZT0) to the onset of the light-phase, has been used to allow comparison among studies independently of the actual clock-time settings of animal facilities. All animal experiments were conducted in accordance with the guidelines of the Animal Care and Use Committee of Tufts University.

Homozygous MCT4^{floxed/floxed}, MCT2^{floxed/floxed} and MCT1^{floxed/floxed} mice originated from Dr. L. Pellerin's lab (Department of Physiology, University of Lausanne, Lausanne, Switzerland). Upon receipt, mice were cleared from quarantine, backcrossed with C57BL/6 mice, and bred in our facility.

MCT4^{floxed/floxed} mice present exons 3,4 and 5 of the *Slc16a3* gene flanked by LoxP sites. The floxed allele showed a 516bp band, while the endogenous *Slc16a3* allele showed a 388bp band (Supplementary Fig.2a). Allele from KD mice showed a 368bp band, while intact floxed allele showed a 446bp band (Supplementary Fig.2a).

MCT1^{floxed/floxed} mice present exon 5 of the *Slc16a1* gene flanked by LoxP sites. The floxed allele showed a 420-base pair (bp) band, while the endogenous *Slc16a1* allele showed a 280bp band, while allele from KD mice showed a 437bp band, while intact floxed allele showed a 227bp band (Supplementary Fig. 2f).

MCT2^{floxed/floxed} mice present exons 4 and 5 of the *Slc16a7* gene flanked by LoxP sites. The floxed allele showed a 436bp band, while the endogenous *Slc16a7* allele showed a 308bp band, while allele from KD mice showed a 227bp band, while intact floxed allele showed a 437bp band (Supplementary Fig. 5a).

Orexin-IRES-Cre mice were generated, validated, and kindly provided by Dr. Dong Kong and crossed with MCT2^{floxed/floxed} mice.

To test the specificity of our viral promoter GFAP (0.7), Ai14 mice (#007909, Jackson Laboratory) have been kindly donated from Dr. Yongjie Yang.

Adeno-virus vector stereotaxic injection

Eight weeks old male and female MCT1^{f/f}, MCT4^{f/f} and Orexin-IRES-Cre x MCT2^{f/f} (oMCT2 KD) mice were anesthetized with isoflurane, injected with buprenorphine (0.5mg/kg) and placed into a stereotaxic frame. Two small holes were bilaterally drilled in the skull (LH coordinates: AP=-1.6, ML=±0.9 mm). A 2 µL Neuro 7002 syringe (Hamilton) was filled with AAV (1×10⁹ virus genomes per µL) and the needle lowered into the holes to reach the LH (LH coordinates: DV =-5.35 mm). One µL of vector per hemisphere was injected at a speed of 100 nL/min using a Microsyringe Pump Controller Micro4 (Harvard Apparatus). MCT4^{f/f} or MCT1^{f/f} mice received either AAV-PhP.eB-GFAP (0.7)-EGFP-T2A-iCre virus (aMCT4 KD or aMCT1 KD mice) or AAV-PhP.eB-GFAP (0.7)-EGFP virus (control mice) (#VB1131 Vector Biolabs) or vehicle only (control mice) (ACSF, #3525 Tocris). oMCT2 KD received AAV-PhP.eB-CAG2-DIO-mSlc16a7-P2A-GFP virus (AAV-272101, Vector Biolabs) to re-express MCT2 in these mice. To visualize orexin-expressing neurons for electrophysiological recordings oMCT2 KD and control mice received AAV9-CAG-DIO-mCherry virus (VB1326, Vector Biolabs). 7 weeks old female and male Ai14 mice have been bilaterally injected with AAV-PhP.eB-GFAP(0.7)-EGFP-T2A-iCre to test for viral transduction specificity.

EEG/EMG and lactate biosensor surgery, recording and analysis

4 or 10 weeks after viral injections MCT1^{f/f} or MCT4^{f/f} mice, depending on the experimental setting, and 7 weeks old oMCT2 KD and related controls mice were anesthetized with isoflurane, injected with buprenorphine (0.5mg/kg) and placed into a stereotaxic frame. EEG/EMG implantation surgeries have been performed as previously described²¹. Briefly, prefabricated EEG/EMG headmounts (8201, Pinnacle Technology, Lawrence, KS) were secured to the skull with four stainless steel EEG screws (8209, Pinnacle Technology, Lawrence, KS) into the pilot holes. Silver epoxy was applied to ensure electrical connectivity between the electrodes and the headmount. EMG leads were inserted bilaterally into the nuchal muscles. The headmounts were then secured to the skull with dental acrylic. 10 days after surgery, mice were moved into an insulated sound-proof chamber and placed into individual Plexiglas circle boxes (Pinnacle Technology, Lawrence, KS) containing water and food ad libitum and headmounts were plugged to a lightweight EEG preamplifier (Pinnacle Technology) that allowed freely moving. Mice were left 3 days for habituation prior to data collection and maintained on a 12:12 light/dark cycle. EEG signals were acquired at a frequency sampling with 400 Hz using Sirenia software (Pinnacle Technology, Lawrence, KS). Sleep stages were scored visually at 4 s epochs by a trained experimenter using SleepSign for Animal software (Kissei Comtec). Wakefulness (W) was defined as low-amplitude, high frequency EEG and high EMG activity; rapid eye movement (REM) sleep was characterized by low amplitude, desynchronized EEG with low EMG activity; and non-rapid eye movement (NREM) sleep consisted of high-amplitude, low frequency EEG with little EMG modulation.

For *in vivo* lactate biosensor experiments, 10 weeks after viral injections MCT4^{f/f} mice and 7 weeks old oMCT2 KD and related control mice were anesthetized with isoflurane, injected with buprenorphine (0.5mg/kg) and placed into a stereotaxic frame. Three small holes were drilled, one into the frontal area and two into the parietal area, and EEG screws with wire leads (8403, Pinnacle Technology, Lawrence, KS) were inserted and manually rotated into the pilot holes. One additional hole was drilled in the skull (LH coordinates: AP=-1.6, ML=0.9 mm) and the guide cannula was lowered into the hole to reach the LH upon insertion of the biosensor (LH coordinate DV=-3.35 mm). The cannula and screws were secured to the skull with dental acrylic. EEG screw wire leads were subsequently soldered to prefabricated EEG/EMG/Bio headmounts (8402, Pinnacle Technology, Lawrence, KS); EMG leads were inserted bilaterally into the nuchal muscles, and headmounts were also secured with dental acrylic. 10 days after surgery, mice were moved into an insulated sound-proof chamber and let habituated as described above. 7-8hours before the dark phase (ZT12) lactate biosensors were *in vitro* precalibrated with known concentration of L-lactate and the interferent Ascorbic Acid, as per manufacturer's instruction, and inserted into the guide cannula. EEG and EMG signals were acquired as described above. Lactate data were also acquired through Sirenia software. EEG/EMG/biosensor recordings continued for ~18hours, followed by *in vitro* biosensor postcalibration with known concentration of L-lactate and the interferent Ascorbic Acid, as per manufacturer's instruction. Biosensors that were sensitive to the interferent Ascorbic Acid during pre or postcalibration were excluded from the analysis.

For lactate measurements analysis: The current trace (nA) recorded using the Pinnacle's lactate biosensor was corrected as described in the Supplementary Materials section. The resulting trace represented the lactate concentration changes (mM) compared to the baseline (set at 1 mM). The sleep (S) and wake (W) events were identified during a 6-hours period (from ZT12 to ZT18) using the EEG/EMG signals, as previously described, and used to define the corresponding values of lactate's change in each state. For a given state (either S or W) and for each genotype, the values

of lactate's change were combined and plotted as histograms (bin width: 0.01 mM). To compare the CTRL vs KD conditions, the values for each group for a given state were subsequently used to compute the Kernel probability distribution (pd) using the fitdist.mat function in MATLAB; the resulting Kernel pd was used to reconstruct a smaller dataset (considering the sensitivity of the Kolmogorov-Smirnov test to the sample size of the analyzed vectors; $n=400$) using the random.mat function in MATLAB and the pd as an input. The reduced datasets were compared with a two-sample Kolmogorov-Smirnov test (kstest2.mat function in MATLAB) testing one of the two alternative hypotheses (using the 'Tail' option in the kstest2.mat function): 1) H1: values in CTRL distribution greater than values in the KD distribution or 2) H1: values in CTRL distribution smaller than values in the KD distribution. H0: values in CTRL KD belongs to the same distribution. Stereotypical traces were visually identified as traces reaching stable values of lactate's change during the W state for 10 minutes and preceded by 2 minutes of stable lactate's change (during S state). The traces were then aligned, with 0 min as the S \rightarrow W transition and averaged for each genotype. The full trace correction description can be found here: (https://osf.io/fwru5/?view_only=48ee97f56e424b219f66ef3d9d7ed20d).

Drug injections in freely behaving mice

10 weeks old MCT4^{f/f} mice or 7 weeks old C57BL/6 were anesthetized with isoflurane, injected with buprenorphine (0.5mg/kg) and placed into a stereotaxic frame. Surgeries were performed as previously described. Briefly, two small holes were bilaterally drilled in the skull (LH coordinates: AP=-1.6, ML=±0.9 mm). Bilateral brain cannula was stereotactically implanted into the LH (Guide cannula #8IC235G18XXC with 4mm pedestal length, internal cannula #8IC235ISPCXC 1.25mm length below the pedestal, P1 Technologies). Mice were then implanted with EEG/EMG electrodes, as described earlier. After 10 days of post-operative recovery, mice were placed into individual Plexiglas circle boxes and their microconnectors plugged to EEG preamplifier, as described above. The following drugs have been used: sodium L-lactate (5 mM, equicaloric to 2.5mM glucose), 1,4-Dideoxy-1,4-imino-D-arabinitol hydrochloride (DAB, 10mM), or Alpha-cyano-4-hydroxycinnamic acid (4-CIN, 1,5mM). To allow for continuous and controlled drug delivery, osmotic mini-pumps (model 1002; Alzet; flow rate, 0.25 μ L/h; 2-wk duration) were secured with the flow moderator, and primed overnight in 0.9% saline solution at 37°C before to be connected to the brain cannula by flexible catheter tubing (#51158, Stoelting)). Osmotic mini-pumps were externalized as previously described²¹. Briefly, cannulas were placed in a sealed Eppendorf filled with 0.9% saline solution and maintained at 37°C with an iBlock Mini Dry Bath (Midsci) placed on top of the cage. The catheter tubing was then filled with aCSF, L-lactate, DAB or 4-CIN, depending on the experimental setting, and a small air bubble was inserted into the catheter tubing during its connection with the pump to monitor the flow rate. The flexible catheter tubing was carefully aligned and attached to the EEG cable. Mice were left 3 days for habituation prior to drug delivery, recordings and data collection, and maintained on a 12:12 light/dark cycle. Each drug was delivered for 4 consecutive days, EEG/EMG recordings were acquired between day 3 and 4 of drug delivery and data analyzed as described above.

Brain slice preparation

Brain slice experiments were performed on male and female adult mice (2-6 months depending on the experimental setting). Briefly, mice were anaesthetized with isoflurane, and after decapitation, the brain was rapidly removed and put in ice-cold (-2° to -4°C) carbogen-bubbled (O₂ 95% / CO₂ 5%) artificial cerebrospinal fluid (ACSF) containing the following (in mM): 120 NaCl, 3.2 KCl, 1

NaH₂PO₄, 26 NaHCO₃, 1 MgCl₂, 2 CaCl₂, 2.5 glucose (osmolarity adjusted to 300 mOsm with sucrose, pH 7.4). After removal of the cerebellum, the brain was glued and coronal hypothalamic slices (350 µm) containing the LH were cut using a vibratome (VT1200S; Leica). Before recording, slices were incubated at 33 °C for a recovery period of 45 min. After recovery, slices were placed in a submerged recording chamber (Warner Instruments) and continuously perfused (2 mL/min) with oxygenated ACSF. The glucose concentration used for recording was 2.5 mM unless otherwise noted. Slices were used for maximally 4 hours after dissection. Experiments were performed at room temperature 21° to 24°C.

Patch-clamp recordings and cell phenotyping

Orexin neurons were visualized with an 16x objective and 2x magnification in an upright Nikon Eclipse FN1 microscope, equipped with an arc-discharge mercury lamp (Nikon intensilight C-HGFI), by using infrared differential interference contrast (IR-DIC).

In oMCT2 KD and control slices, orexin neurons were selected based on mCherry expression.

In aMCT4 KD and control slices, viral transduction was confirmed based on GFP expression in the LH, brain slices showing no infection were discarded. Orexin neurons were discriminated from melanin-concentrating hormone neurons (MCH) residing in the same region for their electrophysiological fingerprints²¹.

Whole-cell patch-clamp recordings were performed in current-clamp mode by using a Multiclamp 700B amplifier (Molecular Devices). Data were filtered at 1 kHz and sampled at 5 kHz with Digidata 1322A interface and Clampex 9.2 and 10.6 from pClamp software (Molecular Devices). Pipettes (from borosilicate capillaries; World Precision Instruments) had resistance of 6-7 MΩ when filled with an internal solution containing the following (in mM): 123 K-gluconate, 2 MgCl₂, 8 KCl, 0.2 EGTA, 4 Na₂-ATP, 0.3 Na-GTP, and 10 HEPES, pH 7.3 with KOH.

Cell-attached patch-clamp recordings were performed in neurons in voltage-clamp mode to record the spontaneous firing activity avoiding dilution of the intracellular compartments. All recordings were analyzed with Clampfit 9.2 and 10.6 from pClamp software (Molecular Devices). Mean firing rate were calculated from 2 min of stable recordings.

All drugs were applied to the perfusing system (bath application) to obtain the final concentrations indicated unless otherwise stated. Alpha-cyano-4-hydroxycinnamic acid (4-CIN), sodium L-lactate and tolbutamide were obtained from Sigma.

Neurobiotin Tracer (1 mg/mL; #SP-1120, Vector Laboratories) was also added to the internal solution during whole-cell recordings for post hoc immunohistochemical phenotyping. Briefly, slices were fixed overnight with 4% paraformaldehyde (PFA), then rinsed several times with a PBS solution and permeabilized and immunoblocked with 0.5% Triton X-100 and 5% NGS (Normal Goat Serum) in PBS. For immunostaining of orexin neurons, slices were incubated with rabbit anti-Orexin-A (1:500; #AB6214, Abcam) for three days at 4°C. The primary antibody was visualized with anti-rabbit Alexa Fluor 633 (1:500; #A21071, Invitrogen). Sections were also incubated with streptavidin 546 (1:500; #S11225, Invitrogen) to label neurons infused with Neurobiotin, then mounted with Vectashield antifade mounting medium with DAPI (Vector Laboratories) and visualized using a confocal laser scanning microscope (Nikon A1) with a 40x oil immersion lens (NA1.0).

Western Blot

Due to the confined size of the lateral hypothalamus, we quantified protein downregulation from the entire isolated area, thus including all cell types within the tissue. To reduce the number of

mice used, proteins were collected from 30 μ m sections from perfused mice (see section below). LH were isolated after confirmation of viral expression based on GFP visualization. Total protein was then extracted by resuspending the isolated tissue in radioimmunoprecipitation assay (RIPA) buffer (10 mM Tris HCl, 0.1 M, pH 7.2; 1% sodium deoxycholate; 1% Triton X-100; 3% sodium dodecyl sulfate [SDS]; 150 mM NaCl, 1.5 M; 1 mM EDTA, pH 8.0, 0.5 M (#AM9260G, Thermo Fisher Scientific); 1 mM phenylmethanesulfonyl fluoride (#93482, Sigma); Complete Protease Inhibitor cocktail (#539131, Millipore Roche); Halt Phosphatase Inhibitor (#1862495, Thermo Fisher Scientific)) and stored at -20°C until usage. Samples were then heated for 20min at 100°C and then let sit on ice for additionally 20 min prior to sonication. Samples were then subjected to sonication (Soniprep 150, MSE) and spun at 21000g for 10 min, supernatants were then collected for protein quantification. Protein quantification was performed using a Pierce BCA Protein Assay kit (#23227, Thermo Scientific). 10 μ g of total protein were mixed with NuPAGE LDS Sample Buffer (#NP007, Life Technologies), NuPAGE Sample Reducing Agent (#NP0009, Life Technologies), and distilled water prior to being heated at 95°C for 5 min. Proteins were separated by SDS-PAGE in a 4%–12% Bis-Tris gel (#NP0336, Thermofisher) using a Novex Bolt Mini Gel system and NuPAGE™ MOPS SDS Running Buffer (NP0001, Thermofisher) before being transferred onto Immobilon-P polyvinylidene fluoride membranes (#IPVH00010, 0.45 mm pore size; Millipore) in NuPAGE™ Transfer Buffer with methanol 20% (NP0006, Thermofisher) for 1 h 40 min at 4°C using a Novex Bolt Mini Blot Module. SeeBlue Plus2 standard (#LC5925, Life Technologies) was used to estimate protein sizes, and transfer was confirmed by Ponceau S (#BP103-10, Fisher Biotech) staining. Immunoblot was obtained by first blocking membranes for 1 h at room temperature with a solution of 0.1% Tween 20 and 5% Bovine Serum Albumin (BSA) (#5217, Tocris) in 1× PBS (pH 7.4) and then incubated with primary antibodies overnight at 4°C: rabbit anti-MCT1 (1:10,000, #20139, Proteintech) and rabbit anti-MCT4 (1:1000, #NBP1-81251, Novus Biologicals). After washing with 1× PBS containing 0.1% Tween 20, the membranes were incubated with the species-appropriate horseradish peroxidase-conjugated secondary antibodies for 1 h. at room temperature at a 1:15,000 dilution in blocking solution. Immunoreactivity was revealed using SuperSignal™ West Pico PLUS Chemiluminescent Substrate (#34577, Thermofisher) and imaged using a Fujifilm LAS 4000 Gel Imager system with ImageQuant LAS 4000 software (Fujifilm). If needed, antibodies were stripped from membranes prior to incubation with another primary antibody or prior to incubation with mouse anti- β -actin (1:1000) in a stripping solution (stripping solution 10%: 7.5% glycine, SDS 1%) with 0.7 β -mercaptoethanol (#63689, Sigma). Densitometry measurements were performed using Fiji, with each protein band being normalized to their respective β -actin. Full membrane images can be found in the following link: https://osf.io/fwru5/?view_only=48ee97f56e424b219f66ef3d9d7ed20d

Tissue Processing and Immunohistochemistry

Mice were anesthetized with isoflurane and transcardially perfused with saline (sodium chloride 0.9%), followed by cold 4% PFA in PBS pH 7.4. The brains were post-fixed in the same solution for 12 h at 4°C and then cryoprotected for at least 24 h in 30% sucrose (Sigma) in 1× PBS at 4°C. Coronal sections containing the LH were cut serially on a freezing microtome (SM2000R; Leica) at a thickness of 30 μ m and then stored in an antifreeze solution at -20°C until immunostaining. For evaluation of cell-specificity upon AAV injection: 4 serial sections 120 μ m apart were used and Cre-induced Td-Tomato expression was evaluated in Ai14 mice. Free-floating sections were washed twice in 1x PBS for 10 min and then incubated with 10% normal goat serum (NGS, #5425, Cell Signaling) blocking solution (1x PBS, 0.3% Triton) for 1 hr. at room temperature, followed

by incubation with primary antibodies (chicken anti-GFAP 1:500, or rabbit anti-Orexin-A 1:500) overnight at 4°C on a shaking platform. Sections were rinsed three times with 1x PBS solution and then incubated with secondary antibodies (633 goat anti-rabbit or 633 goat anti-chicken) for 2 hr. at room temperature. All sections were counterstained with DAPI, mounted on slides with Vectashield antifade mounting medium (#H-1800, Vector Laboratories). Fluorescent images were acquired with a confocal laser scanning microscope (Nikon A1) using a 20x objective. Image analysis and counting of cells expressing Td-tomato with Orexin-A or with GFAP were performed within the LH by using Cell-Counter plug-in in Fiji software. Data are expressed as percentage of double positive cells over the total number of Td-Tomato positive cells. More than 50 cells per animal were counted.

For cannula placement verification: 5 serial sections 120µm apart were used for assessing cannula placement (as well as biosensor placement). Free-floating sections were washed twice in 1x PBS for 10 min and then incubated with 10% normal goat serum (NGS) blocking solution (1x PBS, 0.3% Triton) for 1 hr at room temperature, followed by incubation with primary antibodies (chicken anti-GFP 1:500 or rabbit anti-Orexin-A 1:500) overnight at 4°C on a shaking platform. Sections were rinsed three times with 1x PBS solution and then incubated with secondary antibodies (546 goat anti-rabbit or 488 anti-chicken) for 2 hr. at room temperature. All sections were counterstained with DAPI, mounted on slides with Vectashield antifade mounting medium and checked at an epifluorescence microscope Nikon E800. Bilateral cannula placement representative images were acquired using an epifluorescence microscope (Keyence BZ-X700) with a 10x objective and stitched with Keyence software. Biosensor placement representative images were acquired with a confocal laser scanning microscope (Nikon A1) using a 20x objective. For beautification purpose, brightness of representative images has been changed to increase contrast using Fiji software. (https://osf.io/fwru5/?view_only=48ee97f56e424b219f66ef3d9d7ed20d).

To examine cell-targeting specificity, Cre-induced mCherry expression in orexin neurons, was evaluated in 6 brain sections from 4 Orexin-cre mice injected in the LH with the AAV9-CAG-DIO-mCherry virus.

Free-floating sections were washed twice in 1x PBS for 10 min and then incubated with 10% normal goat serum (NGS, #5425, Cell Signaling) blocking solution (1x PBS, 0.3% Triton) for 1 hr at room temperature, followed by incubation with primary antibodies (mouse anti-Orexin-A 1:200 and rabbit anti-mCherry 1:500) overnight at 4°C on a shaking platform. Sections were rinsed three times with 1x PBS solution and then incubated with secondary antibodies (488 goat anti-mouse and 546 goat anti-rabbit) for 2 hr at room temperature. All sections were counterstained with DAPI, mounted on slides with Vectashield antifade mounting medium. Confocal stacks were acquired using a confocal laser scanning microscope (Nikon A1) using a 40x oil immersion lens (NA1.0). Cell counting was performed using Fiji by scanning through the z-planes manually, DAPI staining was used to colocalize each cell's nucleus with an orexin specific marker (Orexin-A) and the reporter (mCherry). In results shown in Extended we found that $94\% \pm 2.1\%$ of mCherry expressing cells (107 cells counted, from 6 brain sections) were Orexin-A+. On average $85.6\% \pm 4.9\%$ of all orexin neurons (Orexin-A+, 120 cells from 6 brain sections) were mCherry+ (expressing Cre recombinase). Data are expressed as mean \pm SEM of brain sections analyzed.

For orexin neuron quantification: 5 serial sections 120µm apart from Orexin-Cre negative or Orexin-Cre positive mice were used for quantification of orexin neurons. Sections were pre-treated

with peroxidase 3% for 15 min and then incubated for 1 h at room temperature in the blocking solution (1× PBS, 10% NGS, 0.3% Triton X-100), followed by incubation with Rabbit anti-Orexin-A primary antibody (1:500) in blocking solution and incubated at 4°C overnight. The following day, after washing the sections with 1× PBS, sections were incubated with biotinylated secondary antibody (biotinylated goat anti-rabbit, 1:500,) for 1 h at room temperature. Sections were then incubated with “A” and “B” components of Vectastain Elite ABC kit (PK-4000, Vector Laboratories) for 1 h at room temperature, and finally the reaction was developed using 3,3'-diaminobenzidine (DAB) following the supplier's instructions (SK4100 Vector Laboratories). The reaction was blocked by washing the sections with distilled water and mounted with Poly-Mount (#08381, Polysciences). Brightfield images were acquired with Nikon E800 microscope, and of Orexin-positive cells within the LH were counted by using Cell-Counter plug-in in Fiji software. Data are expressed as average of total cells per animal.

Statistical analysis

For slice electrophysiology, normal distribution was assessed using Kolmogorov–Smirnov test. Comparisons between two groups were conducted with the paired or unpaired Student's t test or the nonparametric Mann–Whitney test as appropriate. Repeated-measures ANOVAs followed by Tukey's test were used when multiple measurements were made over time in the same groups, the data were analyzed by fitting a linear mixed-effects model in case of missing values.

EEG/EMG: Repeated-measures ANOVA was used when multiple measurements were made over time in the same groups followed by Tukey's post hoc multiple comparisons tests. Comparisons between two groups were conducted with the paired or unpaired Student's t test. Lactate biosensor traces were analyzed by using two-sample Kolmogorov–Smirnov test. The level of significance was set at $p < 0.05$. Statistical analysis was carried out using the Prism7 and Prism8 software (GraphPad Software, Inc). All values, sample size and related statistics for 24EEG analysis can be found in the Statistics Table (https://osf.io/fwru5/?view_only=48ee97f56e424b219f66ef3d9d7ed20d).

Schematic representations throughout the manuscript have been created with licensed BioRender.com.

Data availability:

All data generated or analyzed during this study are included in this article and its supplemental materials. Source data are provided with this paper.

Code availability

The code used for analyzing lactate biosensor traces is publicly available at the following repository: https://osf.io/fwru5/?view_only=48ee97f56e424b219f66ef3d9d7ed20d

Author information:

Alice Braga and Martina Chiacchiaretta equally contributed to this work. The order of these authors reflects alphabetical order. Alice Braga current affiliation: Centre for Cardiovascular and Metabolic Neuroscience, Department of Neuroscience, Physiology & Pharmacology, University College London, London, WC1E 6BT, UK

Acknowledgements:

We are grateful to Angela Capriglione for the management of mice colonies and technical support. We are also grateful to the University of Lausanne for the agreement to export and use the MCT1, 2 and 4 floxed mice. P.G.H. was supported by NIH grant (R01 NS107315-04). L.P. was supported by Swiss FNS/French ANR grant (FNS 310030E-164271/ANR-15-CE37-0012) and ANR grant (ANR-21-CE44-0023-01). The authors declare no competing interests.

Contributions:

P.G.H. conceived and supervised research. A.B. and M.C. designed and performed research. A.B., M.C., analyzed data. L.P and D.K. provided mice, gave conceptual advice, and made corrections to the manuscript. P.G.H., A.B. and M.C. wrote the paper.

REFERENCES:

- 1 Magistretti, P. J. & Allaman, I. Lactate in the brain: from metabolic end-product to signalling molecule. *Nat Rev Neurosci* **19**, 235-249, doi:10.1038/nrn.2018.19 (2018).
- 2 Felmllee, M. A., Jones, R. S., Rodriguez-Cruz, V., Follman, K. E. & Morris, M. E. Monocarboxylate Transporters (SLC16): Function, Regulation, and Role in Health and Disease. *Pharmacol Rev* **72**, 466-485, doi:10.1124/pr.119.018762 (2020).
- 3 Uhernik, A. L., Tucker, C. & Smith, J. P. Control of MCT1 function in cerebrovascular endothelial cells by intracellular pH. *Brain Res* **1376**, 10-22, doi:10.1016/j.brainres.2010.12.060 (2011).
- 4 Chiry, O. *et al.* Expression of the monocarboxylate transporter MCT1 in the adult human brain cortex. *Brain Res* **1070**, 65-70, doi:10.1016/j.brainres.2005.11.064 (2006).
- 5 Philips, T. *et al.* MCT1 Deletion in Oligodendrocyte Lineage Cells Causes Late-Onset Hypomyelination and Axonal Degeneration. *Cell Rep* **34**, 108610, doi:10.1016/j.celrep.2020.108610 (2021).
- 6 Debernardi, R., Pierre, K., Lengacher, S., Magistretti, P. J. & Pellerin, L. Cell-specific expression pattern of monocarboxylate transporters in astrocytes and neurons observed in different mouse brain cortical cell cultures. *J Neurosci Res* **73**, 141-155, doi:10.1002/jnr.10660 (2003).
- 7 Pierre, K. & Pellerin, L. Monocarboxylate transporters in the central nervous system: distribution, regulation and function. *J Neurochem* **94**, 1-14, doi:10.1111/j.1471-4159.2005.03168.x (2005).
- 8 Pierre, K., Magistretti, P. J. & Pellerin, L. MCT2 is a major neuronal monocarboxylate transporter in the adult mouse brain. *J Cereb Blood Flow Metab* **22**, 586-595, doi:10.1097/00004647-200205000-00010 (2002).
- 9 Monsorno, K. *et al.* Loss of microglial MCT4 leads to defective synaptic pruning and anxiety-like behavior in mice. *Nat Commun* **14**, 5749, doi:10.1038/s41467-023-41502-4 (2023).
- 10 Lundquist, A. J. *et al.* Knockdown of Astrocytic Monocarboxylate Transporter 4 in the Motor Cortex Leads to Loss of Dendritic Spines and a Deficit in Motor Learning. *Mol Neurobiol* **59**, 1002-1017, doi:10.1007/s12035-021-02651-z (2022).
- 11 Descalzi, G., Gao, V., Steinman, M. Q., Suzuki, A. & Alberini, C. M. Lactate from astrocytes fuels learning-induced mRNA translation in excitatory and inhibitory neurons. *Commun Biol* **2**, 247, doi:10.1038/s42003-019-0495-2 (2019).
- 12 Izumi, Y., Benz, A. M., Katsuki, H. & Zorumski, C. F. Endogenous monocarboxylates sustain hippocampal synaptic function and morphological integrity during energy deprivation. *J Neurosci* **17**, 9448-9457, doi:10.1523/JNEUROSCI.17-24-09448.1997 (1997).
- 13 Korol, D. L., Gardner, R. S., Tunur, T. & Gold, P. E. Involvement of lactate transport in two object recognition tasks that require either the hippocampus or striatum. *Behav Neurosci* **133**, 176-187, doi:10.1037/bne0000304 (2019).
- 14 Zhou, Z. *et al.* Astrocytic cAMP modulates memory via synaptic plasticity. *Proc Natl Acad Sci U S A* **118**, doi:10.1073/pnas.2016584118 (2021).
- 15 Suzuki, A. *et al.* Astrocyte-neuron lactate transport is required for long-term memory formation. *Cell* **144**, 810-823, doi:10.1016/j.cell.2011.02.018 (2011).

- 16 Naylor, E. *et al.* Lactate as a biomarker for sleep. *Sleep* **35**, 1209-1222, doi:10.5665/sleep.2072 (2012).
- 17 Rempe, M. J. & Wisor, J. P. Cerebral lactate dynamics across sleep/wake cycles. *Front Comput Neurosci* **8**, 174, doi:10.3389/fncom.2014.00174 (2014).
- 18 Lee, M. G., Hassani, O. K. & Jones, B. E. Discharge of identified orexin/hypocretin neurons across the sleep-waking cycle. *J Neurosci* **25**, 6716-6720, doi:10.1523/JNEUROSCI.1887-05.2005 (2005).
- 19 Mileykovskiy, B. Y., Kiyashchenko, L. I. & Siegel, J. M. Behavioral correlates of activity in identified hypocretin/orexin neurons. *Neuron* **46**, 787-798, doi:10.1016/j.neuron.2005.04.035 (2005).
- 20 Parsons, M. P. & Hirasawa, M. ATP-sensitive potassium channel-mediated lactate effect on orexin neurons: implications for brain energetics during arousal. *J Neurosci* **30**, 8061-8070, doi:10.1523/JNEUROSCI.5741-09.2010 (2010).
- 21 Clasadonte, J., Scemes, E., Wang, Z., Boison, D. & Haydon, P. G. Connexin 43-Mediated Astroglial Metabolic Networks Contribute to the Regulation of the Sleep-Wake Cycle. *Neuron* **95**, 1365-1380 e1365, doi:10.1016/j.neuron.2017.08.022 (2017).
- 22 Lewis, L. D. The interconnected causes and consequences of sleep in the brain. *Science* **374**, 564-568, doi:10.1126/science.abi8375 (2021).
- 23 Medic, G., Wille, M. & Hemels, M. E. Short- and long-term health consequences of sleep disruption. *Nat Sci Sleep* **9**, 151-161, doi:10.2147/NSS.S134864 (2017).
- 24 Pellerin, L. *et al.* Evidence supporting the existence of an activity-dependent astrocyte-neuron lactate shuttle. *Dev Neurosci* **20**, 291-299, doi:10.1159/000017324 (1998).
- 25 Cali, C. *et al.* Three-dimensional immersive virtual reality for studying cellular compartments in 3D models from EM preparations of neural tissues. *J Comp Neurol* **524**, 23-38, doi:10.1002/cne.23852 (2016).
- 26 Zuend, M. *et al.* Arousal-induced cortical activity triggers lactate release from astrocytes. *Nat Metab* **2**, 179-191, doi:10.1038/s42255-020-0170-4 (2020).
- 27 Rosafio, K. & Pellerin, L. Oxygen tension controls the expression of the monocarboxylate transporter MCT4 in cultured mouse cortical astrocytes via a hypoxia-inducible factor-1alpha-mediated transcriptional regulation. *Glia* **62**, 477-490, doi:10.1002/glia.22618 (2014).
- 28 Netzhualcoyotzi, C. & Pellerin, L. Neuronal and astroglial monocarboxylate transporters play key but distinct roles in hippocampus-dependent learning and memory formation. *Prog Neurobiol* **194**, 101888, doi:10.1016/j.pneurobio.2020.101888 (2020).
- 29 Martini, T. *et al.* The Hepatic Monocarboxylate Transporter 1 (MCT1) Contributes to the Regulation of Food Anticipation in Mice. *Front Physiol* **12**, 665476, doi:10.3389/fphys.2021.665476 (2021).
- 30 De Luca, R. *et al.* Orexin neurons inhibit sleep to promote arousal. *Nat Commun* **13**, 4163, doi:10.1038/s41467-022-31591-y (2022).
- 31 Silver, I. A. & Erecinska, M. Extracellular glucose concentration in mammalian brain: continuous monitoring of changes during increased neuronal activity and upon limitation in oxygen supply in normo-, hypo-, and hyperglycemic animals. *J Neurosci* **14**, 5068-5076, doi:10.1523/JNEUROSCI.14-08-05068.1994 (1994).
- 32 Karagiannis, A. *et al.* Lactate is an energy substrate for rodent cortical neurons and enhances their firing activity. *Elife* **10**, doi:10.7554/eLife.71424 (2021).

- 33 Parsons, M. P., Belanger-Willoughby, N., Linehan, V. & Hirasawa, M. ATP-sensitive potassium channels mediate the thermosensory response of orexin neurons. *J Physiol* **590**, 4707-4715, doi:10.1113/jphysiol.2012.236497 (2012).
- 34 Fink, K., Velebit, J., Vardjan, N., Zorec, R. & Kreft, M. Noradrenaline-induced l-lactate production requires d-glucose entry and transit through the glycogen shunt in single-cultured rat astrocytes. *J Neurosci Res* **99**, 1084-1098, doi:10.1002/jnr.24783 (2021).
- 35 Ibrahim, M. M. H., Bheemanapally, K., Sylvester, P. W. & Briski, K. P. Norepinephrine Regulation of Adrenergic Receptor Expression, 5' AMP-Activated Protein Kinase Activity, and Glycogen Metabolism and Mass in Male Versus Female Hypothalamic Primary Astrocyte Cultures. *ASN Neuro* **12**, 1759091420974134, doi:10.1177/1759091420974134 (2020).
- 36 Bellesi, M., de Vivo, L., Koebe, S., Tononi, G. & Cirelli, C. Sleep and Wake Affect Glycogen Content and Turnover at Perisynaptic Astrocytic Processes. *Front Cell Neurosci* **12**, 308, doi:10.3389/fncel.2018.00308 (2018).
- 37 Magistretti, P. J., Sorg, O., Yu, N., Martin, J. L. & Pellerin, L. Neurotransmitters regulate energy metabolism in astrocytes: implications for the metabolic trafficking between neural cells. *Dev Neurosci* **15**, 306-312, doi:10.1159/000111349 (1993).
- 38 Williams, R. H., Jensen, L. T., Verkhatsky, A., Fugger, L. & Burdakov, D. Control of hypothalamic orexin neurons by acid and CO₂. *Proc Natl Acad Sci U S A* **104**, 10685-10690, doi:10.1073/pnas.0702676104 (2007).
- 39 McKenna, M. C., Hopkins, I. B. & Carey, A. Alpha-cyano-4-hydroxycinnamate decreases both glucose and lactate metabolism in neurons and astrocytes: implications for lactate as an energy substrate for neurons. *J Neurosci Res* **66**, 747-754, doi:10.1002/jnr.10084 (2001).
- 40 Maekawa, F., Minehira, K., Kadomatsu, K. & Pellerin, L. Basal and stimulated lactate fluxes in primary cultures of astrocytes are differentially controlled by distinct proteins. *J Neurochem* **107**, 789-798, doi:10.1111/j.1471-4159.2008.05650.x (2008).
- 41 Contreras-Baeza, Y. *et al.* Monocarboxylate transporter 4 (MCT4) is a high affinity transporter capable of exporting lactate in high-lactate microenvironments. *J Biol Chem* **294**, 20135-20147, doi:10.1074/jbc.RA119.009093 (2019).
- 42 Dash, M. B., Tononi, G. & Cirelli, C. Extracellular levels of lactate, but not oxygen, reflect sleep homeostasis in the rat cerebral cortex. *Sleep* **35**, 909-919, doi:10.5665/sleep.1950 (2012).
- 43 Lundgaard, I. *et al.* Glymphatic clearance controls state-dependent changes in brain lactate concentration. *J Cereb Blood Flow Metab* **37**, 2112-2124, doi:10.1177/0271678X16661202 (2017).
- 44 Hadjihambi, A., Karagiannis, A., Theparambil, S. M., Ackland, G. L. & Gourine, A. V. The effect of general anaesthetics on brain lactate release. *Eur J Pharmacol* **881**, 173188, doi:10.1016/j.ejphar.2020.173188 (2020).
- 45 Wisor, J. P., Rempe, M. J., Schmidt, M. A., Moore, M. E. & Clegern, W. C. Sleep slow-wave activity regulates cerebral glycolytic metabolism. *Cereb Cortex* **23**, 1978-1987, doi:10.1093/cercor/bhs189 (2013).
- 46 Machler, P. *et al.* In Vivo Evidence for a Lactate Gradient from Astrocytes to Neurons. *Cell Metab* **23**, 94-102, doi:10.1016/j.cmet.2015.10.010 (2016).

- 47 Roumes, H. *et al.* Lactate transporters in the rat barrel cortex sustain whisker-dependent BOLD fMRI signal and behavioral performance. *Proc Natl Acad Sci U S A* **118**, doi:10.1073/pnas.2112466118 (2021).
- 48 DiNuzzo, M. *et al.* Neurovascular coupling is optimized to compensate for the increase in proton production from nonoxidative glycolysis and glycogenolysis during brain activation and maintain homeostasis of pH, pCO₂ (,) and pO₂. *J Neurochem*, doi:10.1111/jnc.15839 (2023).
- 49 Lund, J. *et al.* The anorectic and thermogenic effects of pharmacological lactate in male mice are confounded by treatment osmolarity and co-administered counterions. *Nat Metab* **5**, 677-698, doi:10.1038/s42255-023-00780-4 (2023).
- 50 Mochizuki, T. *et al.* Behavioral state instability in orexin knock-out mice. *J Neurosci* **24**, 6291-6300, doi:10.1523/JNEUROSCI.0586-04.2004 (2004).
- 51 Willie, J. T. *et al.* Distinct narcolepsy syndromes in Orexin receptor-2 and Orexin null mice: molecular genetic dissection of Non-REM and REM sleep regulatory processes. *Neuron* **38**, 715-730, doi:10.1016/s0896-6273(03)00330-1 (2003).
- 52 Parsons, M. P. *et al.* Nociceptin induces hypophagia in the perifornical and lateral hypothalamic area. *PLoS One* **7**, e45350, doi:10.1371/journal.pone.0045350 (2012).
- 53 Fifel, K., Meijer, J. H. & Deboer, T. Long-term effects of sleep deprivation on neuronal activity in four hypothalamic areas. *Neurobiol Dis* **109**, 54-63, doi:10.1016/j.nbd.2017.10.005 (2018).
- 54 Li, S. B. *et al.* Hyperexcitable arousal circuits drive sleep instability during aging. *Science* **375**, eabh3021, doi:10.1126/science.abh3021 (2022).
- 55 Gao, F., Liu, T., Tuo, M. & Chi, S. The role of orexin in Alzheimer disease: From sleep-wake disturbance to therapeutic target. *Neurosci Lett* **765**, 136247, doi:10.1016/j.neulet.2021.136247 (2021).
- 56 Oh, J. Y. *et al.* Subcortical Neuronal Correlates of Sleep in Neurodegenerative Diseases. *JAMA Neurol* **79**, 498-508, doi:10.1001/jamaneurol.2022.0429 (2022).
- 57 Harris, R. A. *et al.* Aerobic Glycolysis in the Frontal Cortex Correlates with Memory Performance in Wild-Type Mice But Not the APP/PS1 Mouse Model of Cerebral Amyloidosis. *J Neurosci* **36**, 1871-1878, doi:10.1523/JNEUROSCI.3131-15.2016 (2016).
- 58 Macauley, S. L. *et al.* Hyperglycemia modulates extracellular amyloid-beta concentrations and neuronal activity in vivo. *J Clin Invest* **125**, 2463-2467, doi:10.1172/JCI79742 (2015).
- 59 Blazquez, E. *et al.* Significance of Brain Glucose Hypometabolism, Altered Insulin Signal Transduction, and Insulin Resistance in Several Neurological Diseases. *Front Endocrinol (Lausanne)* **13**, 873301, doi:10.3389/fendo.2022.873301 (2022).
- 60 Ardanaz, C. G., Ramirez, M. J. & Solas, M. Brain Metabolic Alterations in Alzheimer's Disease. *Int J Mol Sci* **23**, doi:10.3390/ijms23073785 (2022).
- 61 Carroll, C. M. & Macauley, S. L. The Interaction Between Sleep and Metabolism in Alzheimer's Disease: Cause or Consequence of Disease? *Front Aging Neurosci* **11**, 258, doi:10.3389/fnagi.2019.00258 (2019).

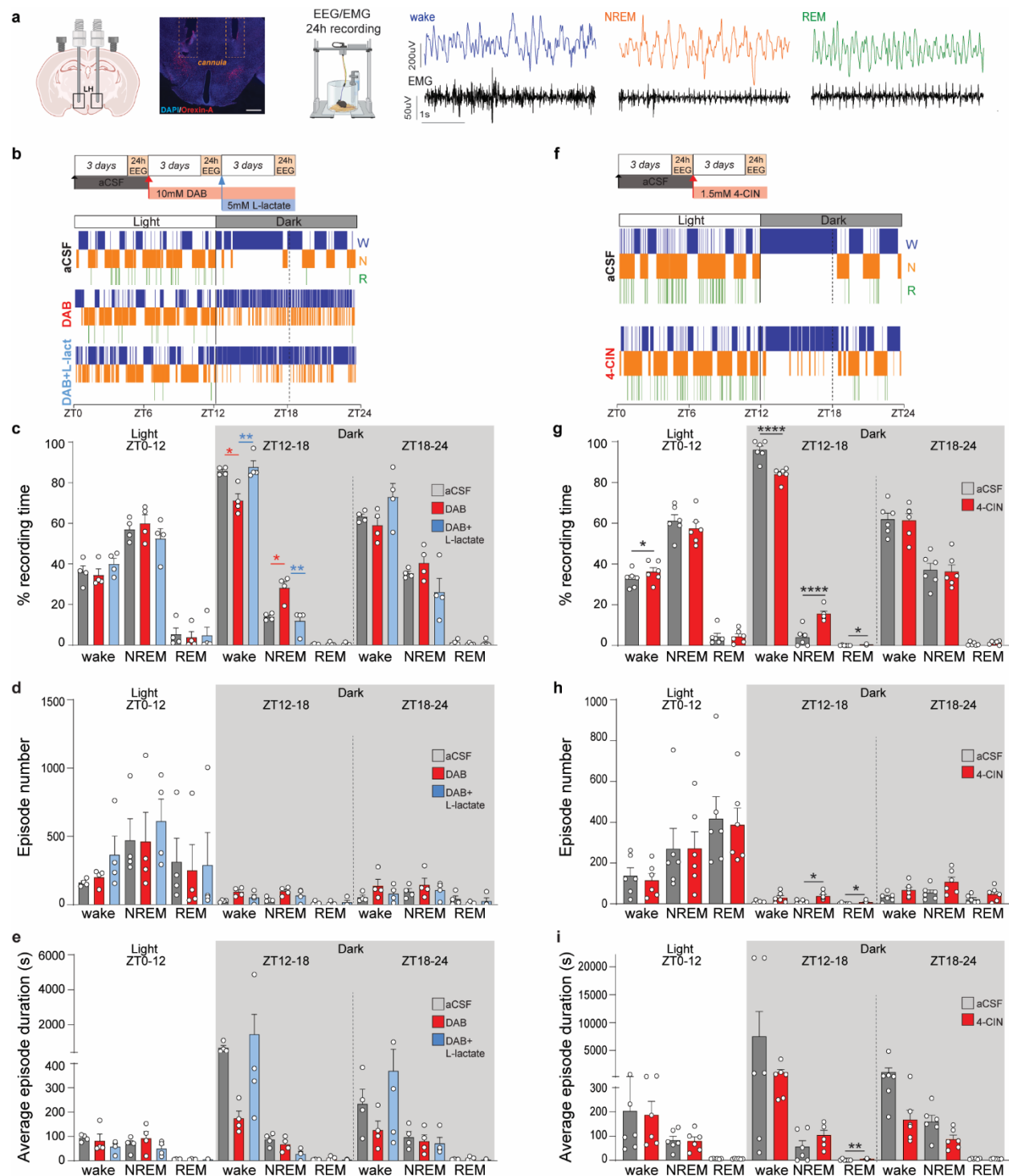


Figure 1: Blockage of glycogenolysis or MCTs in the LH reduces wakefulness during the dark phase.

(a) (Left to right) Cartoon representing implantation of bilateral cannula in the LH for drug delivery coupled with EEG/EMG recording. Immunofluorescence micrograph from WT mice showing placement of the cannula (highlighted by orange squares) near to Orexin-A positive cells (red). Scale bar=100μm. Schematic representation of EEG/EMG recording setting and representative traces for EEG and EMG during wakefulness, NREM and REM.

1030 (b and f) Experimental design and timeline for DAB and DAB + L-lactate infusion (b) and 4-CIN infusion
1031 (f). 24h EEG recordings were analyzed over time in the same WT mice. Representative hypnograms of the
1032 same WT mouse in the different conditions during 24h EEG recordings (bottom panels) (W – wake; N –
1033 NREM and R – REM).
1034 (c and g) Quantification of the averaged percentage of time spent in wake, NREM or REM before and after
1035 DAB, DAB + L-lactate (c) or 4-CIN treatment (g) during the 24h recording phase.
1036 (d and h) Average of the number of wake, NREM, and REM episodes during the 24h recording phase before
1037 and after DAB, DAB + -lactate (d) or 4-CIN (h).
1038 (e and i) Average duration of wake, NREM, and REM episodes during the 24h recording phase before and
1039 after DAB, DAB + L-lactate (e), and 4-CIN infusion (i). (c,d and e: n=4, Repeated-measure ANOVA
1040 followed by Tukey's post hoc test; *p<0.05, **p<0.01; aCSF infusion in grey, DAB infusion in red, DAB
1041 + L-lactate infusion in blue; g, h and i: n=6, paired t-test; *p<0.05, **p<0.01, ****p<0.0001; aCSF infusion
1042 in grey, 4-CIN infusion in red). ZT= Zeitgeber Time; EEG= electroencephalogram;
1043 EMG=electromyography; DAB=1,4-dideoxy-1,4-imino-d-arabinitol; 4-CIN=alpha-cyano-4-
1044 hydroxycinnamate. Pooled data are shown as mean ± SEM.

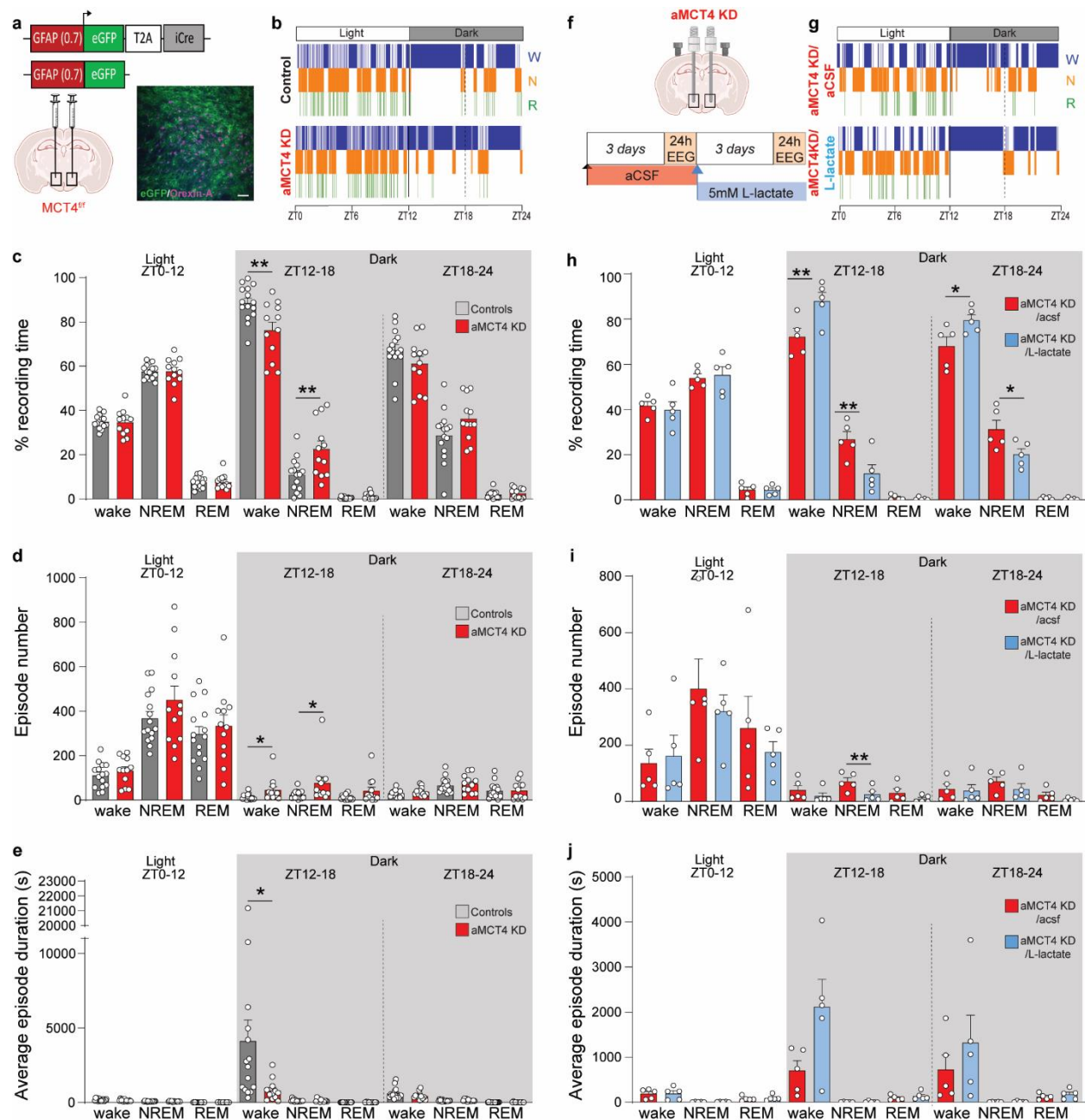


Figure 2: Deletion of astrocytic MCT4 induces excessive sleepiness during the dark phase and is rescued by exogenous lactate.

(a) Schematic of stereotaxic injections of either Cre-encoding PhP.eB virus (aMCT4 KD mice) or control PhP.eB virus (control mice) in the LH of MCT4f/f mice and immunofluorescence micrograph showing eGFP expression (green) near Orexin-A (magenta) positive cells 12 weeks after virus injection. Scale bar=100µm.

(b) Representative hypnograms of Control mouse and aMCT4 KD mouse during 24h EEG recordings (W – wake; N – NREM and R – REM).

(c) Quantification of the average percentage of time spent in wake, NREM or REM sleep during the 24h recording phase in aMCT4 KD mice compared to control mice.

1057 (d) Average of the number of wake, NREM and REM episodes during the 24h recording phase in aMCT4
1058 KD mice compared to control mice.
1059 (e) Average duration of the wake, NREM and REM episodes during the 24h recording phase in aMCT4
1060 KD mice compared to control mice. (c, d, e: red, aMCT4 KD n=12; grey, controls n=15, unpaired t-test;
1061 *p<0.05, **p<0.01). Pooled data are shown as mean \pm SEM.
1062 (f) Experimental design and timeline for L-lactate infusion; 24h EEG recordings were analyzed over time
1063 in the same aMCT4 KD mouse.
1064 (g) Representative hypnograms of the same aMCT4 KD at different conditions during 24h EEG recordings
1065 (W – wake; N – NREM and R – REM).
1066 (h) Quantification of averaged percentage of time spent in wake, NREM or REM sleep during the 24h
1067 recording in aMCT4 KD mice upon lactate infusion.
1068 (i) Average of the number of wake, NREM and REM episodes during the 24h recording phase in aMCT4
1069 KD mice upon lactate infusion.
1070 (j) Average duration of the wake, NREM and REM episodes during the 24h recording in aMCT4 KD mice
1071 upon lactate infusion. (h, i, j: n=5, paired t-test; *p<0.05). ZT= Zeitgeber Time. Pooled data are
1072 shown as mean \pm SEM.

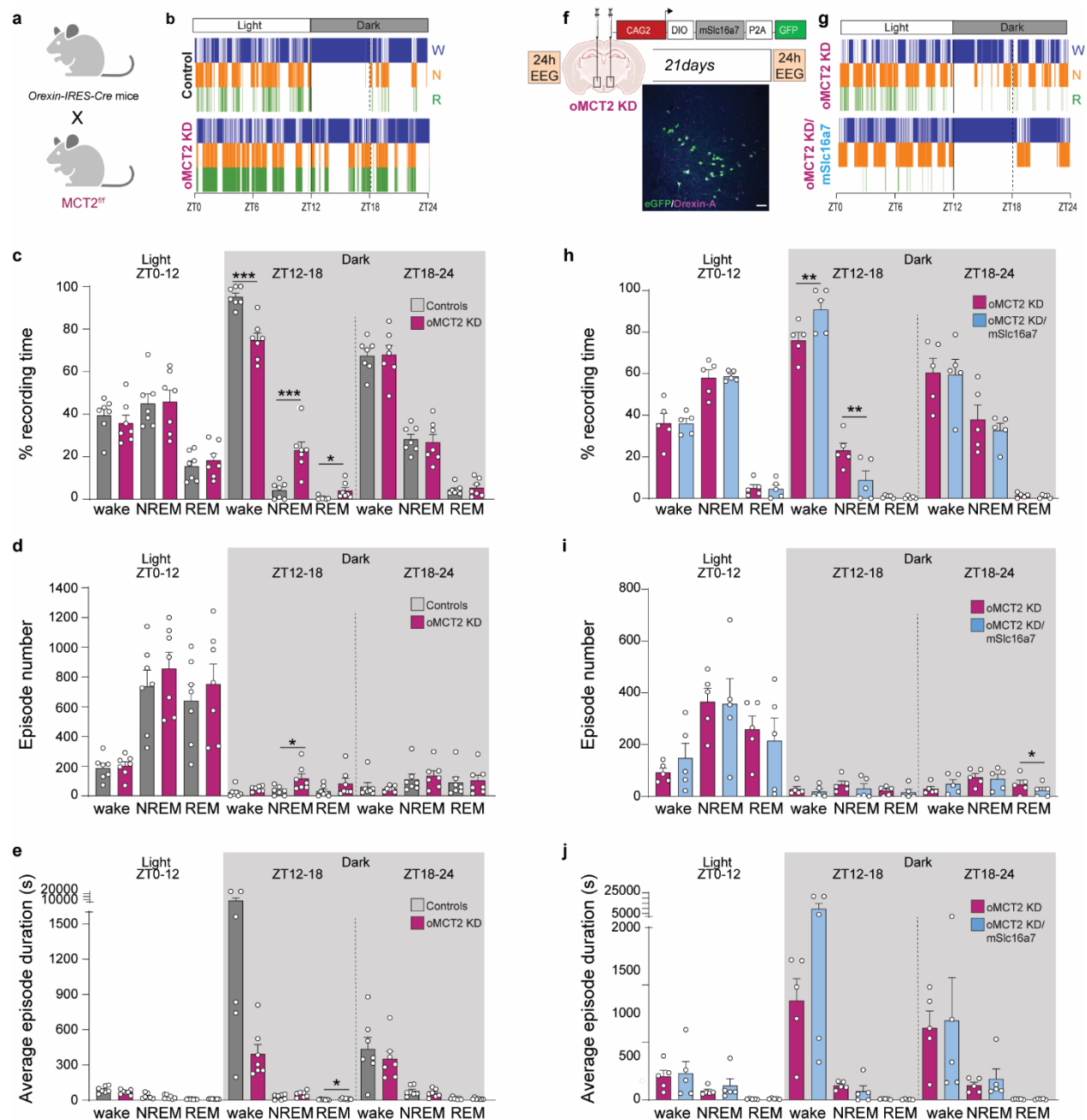


Figure 3: Deletion of orexinergic MCT2 induces excessive sleepiness during the dark phase.

(a) Schematic representation showing breeding strategies for deletion of MCT2 in orexin neurons: Orexin-IRES-Cre mice were crossed with MCT2^{fl/fl} (oMCT2 KD), non-Cre littermates were used as controls.

(b) Representative hypnograms of Control mouse and oMCT2 KD mouse during 24h EEG recordings (W – wake, N – NREM, R – REM).

(c) Quantification of averaged percentage of time spent in wake, NREM, or REM sleep during the 24h recording phase in oMCT2 KD mice compared to control mice.

(d) Average of the number of wakefulness, NREM, and REM episodes during the 24h recording phase in oMCT2 KD mice compared to control mice.

(e) Average duration of the wake, NREM, and REM episodes during the 24h recording phase in oMCT2 KD mice compared to control mice. (c, d and e: controls n=7, oMCT2 KD n=7, unpaired t-test; *p<0.05, ***p<0.001). Pooled data are shown as mean \pm SEM.

(f) Experimental design and timeline of local LH injection of PhP.eB virus expressing mScla16a7 in the presence of CRE (DIO) in oMCT2 KD mice. Twenty-four hours EEG recordings were analyzed over time in the same oMCT2 KD mouse before virus injection and 21 days after injection.

(g) Representative hypnograms of the same oMCT2 KD mouse at different conditions during 24h EEG recordings.

(h) Quantification of the averaged percentage of time spent in wake, NREM, or REM sleep during the 24h recording phase before and after MCT2 re-expression in oMCT2 KD.

(i) Average of the number of wake, NREM and REM episodes during the 24h recording phase before and after MCT2 re-expression in oMCT2 KD.

(j) Average duration of the wake, NREM, and REM episodes during the 24h recording phase before and after MCT2 re-expression in oMCT2 KD. (h, i and j: n=5, paired t-test; **p<0.01). ZT= Zeitgeber Time. Pooled data are shown as mean \pm SEM.

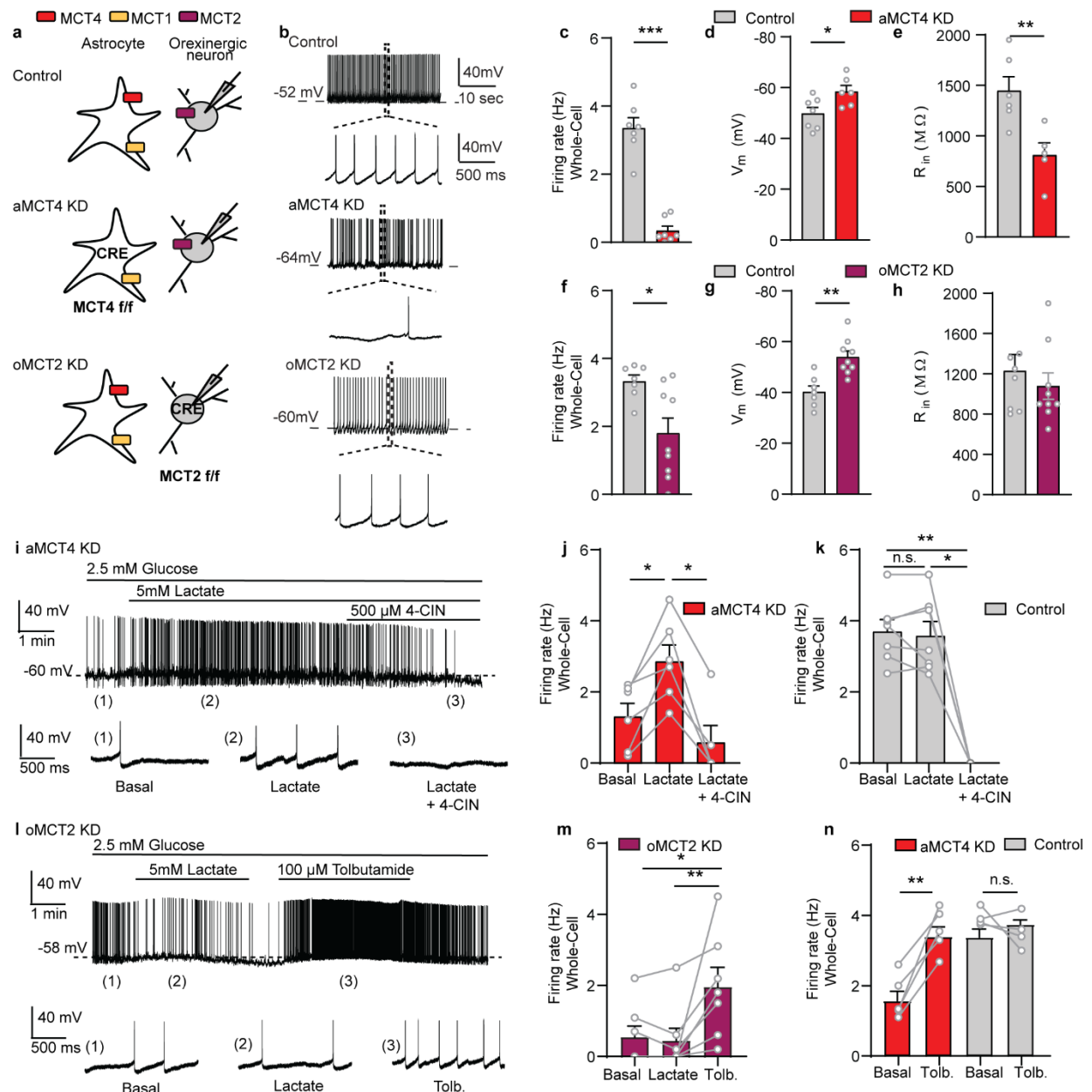


Figure 4: Exogenous lactate restores spontaneous activity of orexinergic neurons from astrocytic MCT4 KD mice but not in orexinergic MCT2 KD mice.

(a) Schematic of the experimental design.

(b, c, f). Whole-cell representative traces (b) and average firing rate (c, f) (2.5 mM glucose) showing reduced spontaneous firing in orexinergic neurons of aMCT4 KD (Controls n=7 cells/4 mice; aMCT4 KD n=7 cells/4 mice; Mann-Whitney test) and oMCT2 KD mice (Controls, n=7 cells/4 mice; oMCT2 KD, n=9 cells/4 mice; Student t-test).

(d, g) Membrane voltage (V_m) hyperpolarization in aMCT4 KD (Controls, n=7 cells/4 mice; aMCT4 KD, n=6 cells/3 mice; Student t-test) and oMCT2 KD mice (Control, n=7 cells/4 mice and oMCT2 KD n=9 cells/4 mice; Student t-test).

(e, h) Decreased average input resistance (R_{in}) in MCT4 KD (Control, n=6 cells/3 mice; aMCT4 KD, n=5 cells/3 mice; Student t-test), (Control, n=7 cells/3 mice and oMCT2 KD n=9 cells/4 mice; Student t-test, p=0.28).

(i - k) Lactate depolarization of an aMCT4 KD orexinergic neuron was suppressed by 4-CIN, MCTs inhibitor. Representative trace (i) and average firing rate (j) ([Basal], n = 6 cells/4 mice; [Lactate], n= 6 cells/4 mice; [Lactate + 4-CIN], n=5 cells/4 mice; Linear mixed-effects model;). Same experiment as in (j) but in Control mice (k), ([Basal], n = 6 cells/3 mice; [Lactate], n= 6 cells/3 mice; [Lactate + 4-CIN], n=4 cells/3 mice; linear mixed-effects model).

(l - m) Extracellular lactate had no effect on orexinergic activity from oMCT2 KD mice, while tolbutamide (K_{ATP} channel inhibitor) increased the firing rate. The bottom traces show an expanded timescale at different time points (l). Average firing rate of orexinergic neurons from oMCT2 KD exposed to different conditions (m) ([Basal], n = 7 cells/5 mice; [Tolbutamide], n= 7 cells/5 mice; [Lactate], n= 7 cells/5 mice; Dunn's multiple comparisons test).

(n) Tolbutamide increased the firing rate of orexinergic neurons from aMCT4 KD ([Basal], n = 5 cells, three mice; [Tolbutamide], n= 5 cells/3 mice; paired Student's t test) but had no effect in Control mice ([Basal], n = 4 cells/3 mice; [Tolbutamide], n= 4 cells/3 mice; paired Student's t test; p=0.33).

***p < 0.001, **p<0.01, *p<0.05

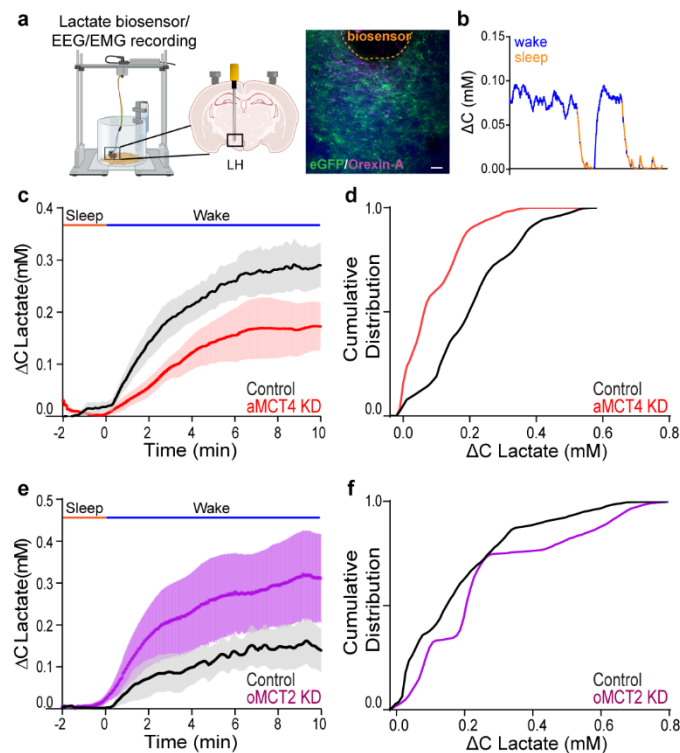


Figure 5: Deletion of astrocytic MCT4 reduces extracellular lactate surges during wakefulness, while deletion of orexinergic neuron MCT2 increases extracellular lactate surges during wakefulness.

(a) Schematic representation of lactate biosensor recording/placement coupled with EEG/EMG, and immunofluorescence micrograph showing positioning of lactate biosensor (highlighted by orange line) in the LH near Orexin-A positive cells (magenta) and eGFP positive astrocytes in green. Scale bar=100 μ m.

(b) Representative trace of extracellular lactate recording during the dark phase color coded according to EEG analysis.

(c and e) Mean stereotypical traces for control and aMCT4 KD mice (c), and oMCT2 KD mice (e) upon wakefulness (blue line “Wake”). Pooled data are shown as mean \pm SEM. EEG=electroencephalogram; EMG=electromyography

(d and f) cumulative frequency plots (Two-sample Kolmogorov-Smirnov test) of lactate concentrations during all wakefulness events in the first hours of the dark phase (ZT12-18). (d) aMCT4 KD mice (red, n=4) compared to controls mice (black, n=5); (f) oMCT2 KD (violet, n=6) mice compared to controls mice (black, n=5).

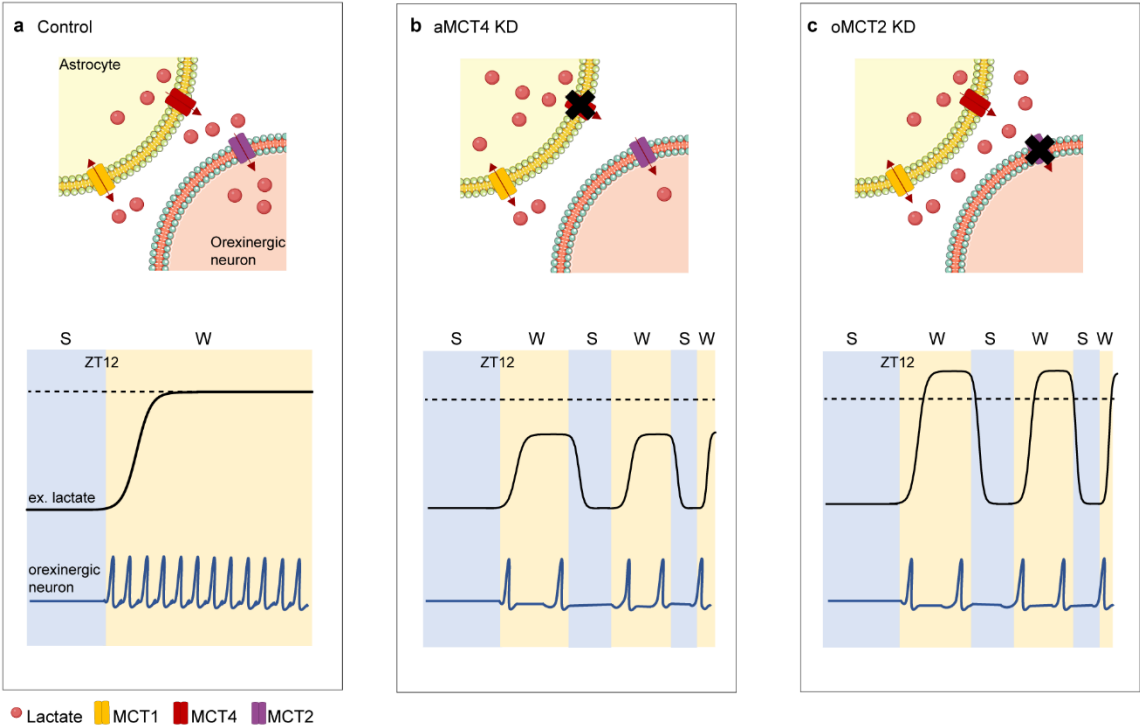


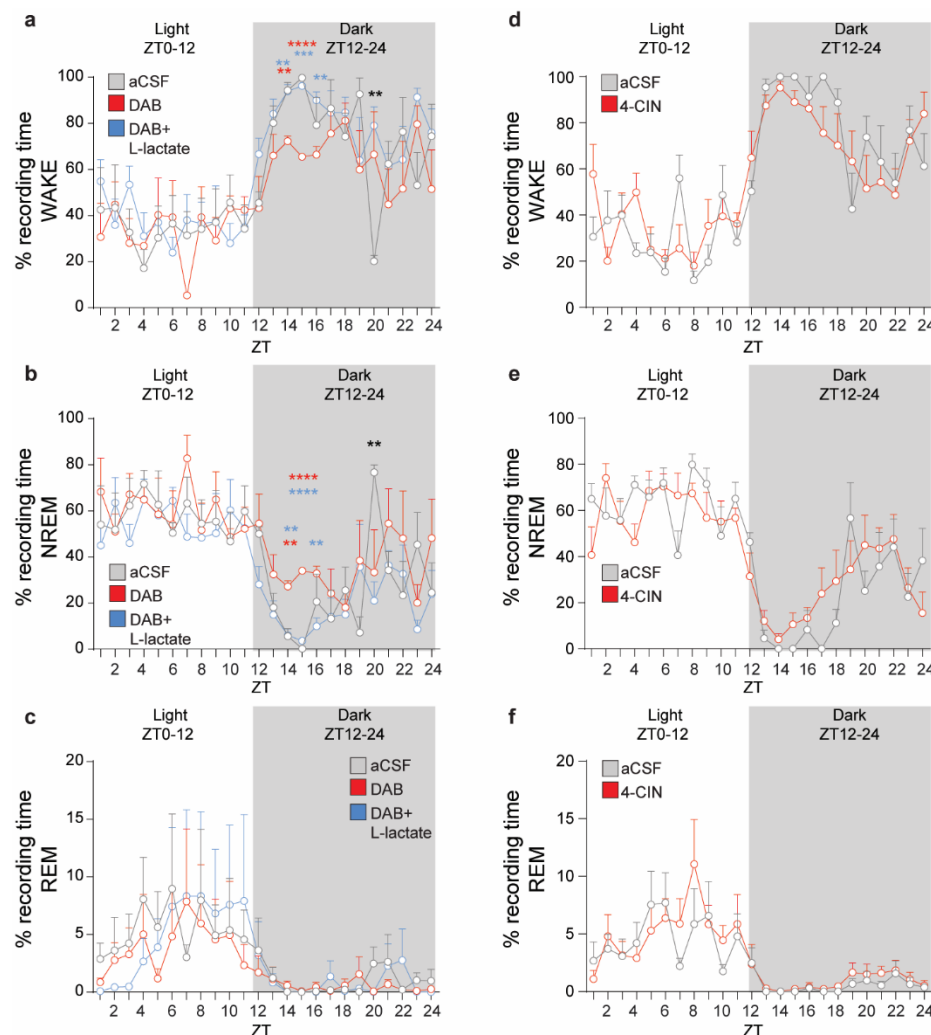
Figure 6: Astrocytic-derived lactate supports orexinergic activity and consolidates wakefulness.

(a) During the transition from sleep to wake lactate is released through astrocytic MCT4, which serves as an energy source and modifies orexinergic excitability as well as activity, thus promoting wakefulness consolidation.

(b) Deletion of MCT4 results in a reduction in lactate release during wakefulness, leading to a decrease in orexinergic tonic firing and subsequent fragmentation of wakefulness.

(c) Deletion of MCT2 hinders the import of lactate into orexinergic neurons, resulting in decreased orexinergic activity and compromised stability of wakefulness.

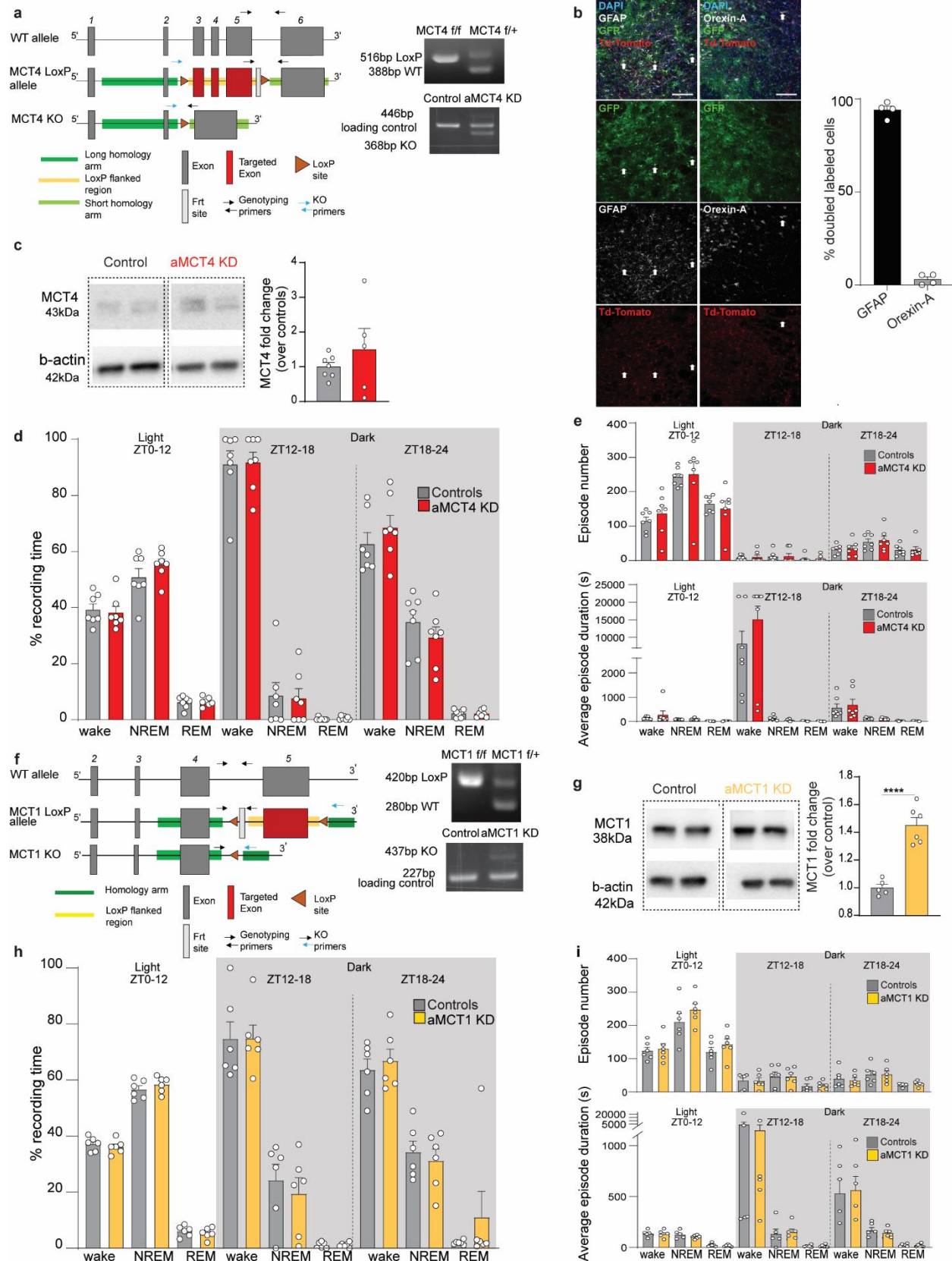
ZT= Zeitgeber Time; S= sleep; W= wake.



Supplementary Fig. 1. Sleep/wake pattern in WT mice upon blockage of glycogenolysis or MCTs in the LH

(a - c) Averaged percentage of the time spent in wake (a), NREM (b), and REM sleep (c) per hour in WT mice upon DAB or DAB+L-lactate infusion compared to control mice.

(d - f) Averaged percentage of the time spent in wake (d), NREM (e), and REM sleep (f) per hour in WT mice upon 4-CIN infusion compared to control mice. (a, b and c: n=4, Two-Way ANOVA followed by Sidak post hoc test; **p<0.01, ****p<0.0001; p-values in red refer to DAB vs aCSF, p-values in blue refer to DAB+L-lactate vs DAB, p values in black refer to DAB+L-lactate vs aCSF; aCSF infusion in grey, DAB infusion in red, DAB + L-lactate infusion in blue; d, e and f: n=6, Two-Way ANOVA followed by Sidak post hoc test; aCSF infusion in grey, 4-CIN infusion in red). ZT= Zeitgeber Time; DAB=1,4-dideoxy-1,4-imino-d-arabinitol; 4-CIN=alpha-cyano-4-hydroxycinnamate. Pooled data are shown as mean ± SEM.



Supplementary Fig. 2: Knockdown of astrocytic MCT4 or MCT1, 6 weeks after viral injections into the LH

(a) Diagram of the MCT4 wild-type allele, LoxP flanked allele and KO allele (left panel). Right panels show genotype PCR for the floxed MCT4 allele in homozygous (MCT4 f/f) and heterozygous (MCT4 f/+) mice and the genotyping results of aMCT4 KD mouse and control mouse.

(b) Representative immunofluorescence micrographs representing viral injections (PhP.eB-GFAP(0.7)-iCre-T2A-eGFP) into the LH in Ai14 mice. GFP in green, GFAP (left panel) and Orexin-A (right panel) in white and endogenous Td-Tomato expressed upon Cre recombination in red. White arrows indicate representative double positive astrocytes (expressing GFAP and Td-Tomato) or double positive orexinergic neurons (expressing Orexin-A and Td-Tomato). Quantification of cells expressing Td-Tomato and labeled with either GFAP or Orexin-A (n=4 mice) on the right.

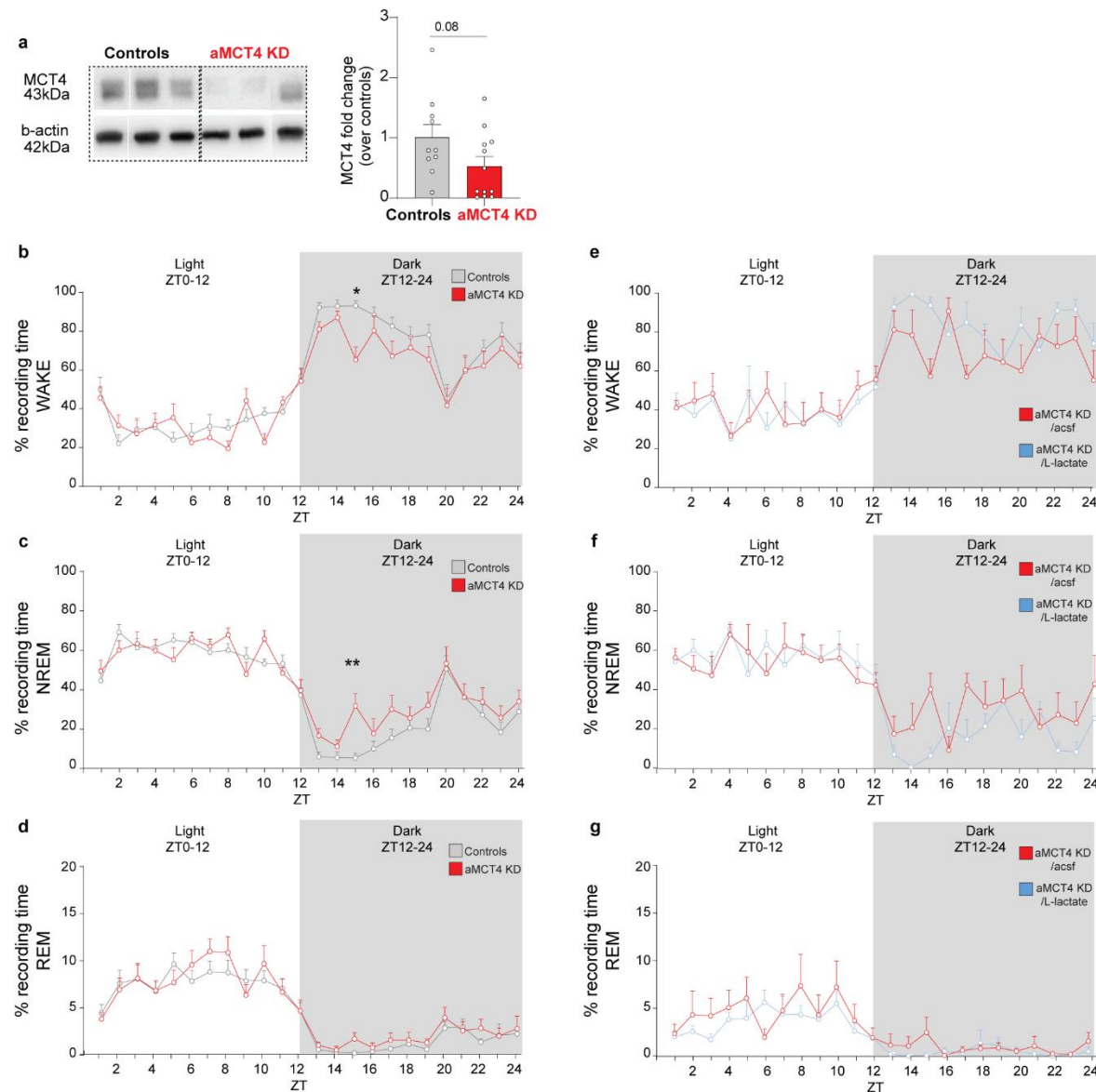
(c) Representative western blot image of MCT4 expression and densitometric quantification 6 weeks after injections (Controls n=7, aMCT4 KD n=5). β -Actin was used as a loading control. The results are expressed as the mean values relative to controls (\pm SEM) (unpaired t test).

(d and h) Quantification of the average percentage of time spent in wake, REM or NREM sleep during the 24 h recording phase in control mice (n=7) and aMCT4 KD mice (n=7) (d) or in aMCT1 KD mice (n=6) and corresponding controls (n=6), showing no differences between the groups (h) (unpaired t test).

(e and i) Average of the number (top panel) and duration (bottom panel) of wake, REM and NREM sleep episodes during the 24 h recording phase in control mice (n=7) and aMCT4 KD mice (n=7) (e) or in aMCT1 KD mice (n=7) and corresponding control (n=6) (i) (unpaired t-test).

(f) Diagram of the MCT1 wild-type allele, LoxP flanked allele and KD allele (left panel). Right panels show genotype PCR for the floxed MCT1 allele in homozygous (MCT1 f/f) and heterozygous (MCT1 f/+) mice and the genotyping results of aMCT1 KD mouse and control mouse.

(g) Representative western blot image of MCT1 expression and densitometric quantification 6 weeks after injections (Controls n=5, aMCT1 KD n=6). β -Actin was used as a loading control. The results are expressed as the mean values relative to controls (\pm SEM) (unpaired t test; ****p<0.0001).

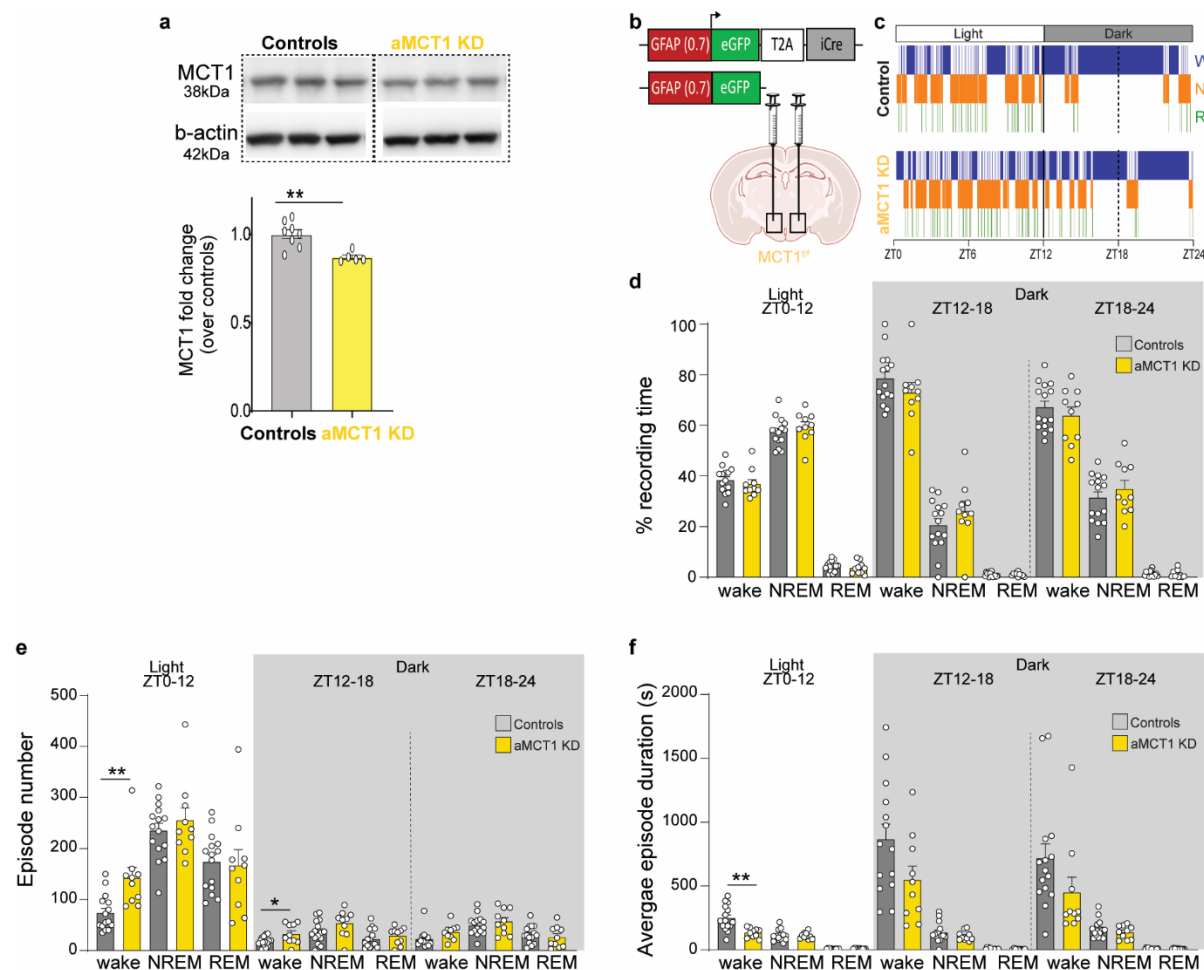


Supplementary Fig. 3: 12 weeks post-viral injection, knockdown of astrocytic MCT4 alters sleep/wake architecture.

(a) Representative western blot image of MCT4 expression and densitometric quantification (Controls n=10, aMCT4KD n=12). β -Actin was used as a loading control (unpaired t test).

(b - d) Averaged percentage of the time spent in wake (b), NREM (c), and REM sleep (d) per hour in aMCT4 KD mice compared to control mice. (aMCT4 KD n=12; controls n=15, Two-Way ANOVA followed by Sidak post hoc test; * $p < 0.05$, ** $p < 0.01$)

(e - g) Averaged percentage of the time spent in wake (e), NREM (f), and REM sleep (g) per hour in aMCT4 KD mice upon lactate infusion. (a, b and c: n=5, Two-Way ANOVA followed by Sidak post hoc test). ZT= Zeitgeber Time. Pooled data are shown as mean \pm SEM.



Supplementary Fig. 4: Deletion of astrocytic MCT1 increases the number of wakefulness events during the dark phase

(a) Representative western blot image of MCT1 expression and densitometric quantification 12 weeks after injection (Controls n=8, aMCT1 KD n=5). β-Actin was used as a loading control. The results are mean values relative to controls (±SEM). (unpaired t test; **p<0.01).

(b) Schematic of stereotaxic injections of either Cre-encoding PhP.eB virus (aMCT1 KD mice) or control PhP.eB virus (control mice) in the LH of MCT1f/f mice.

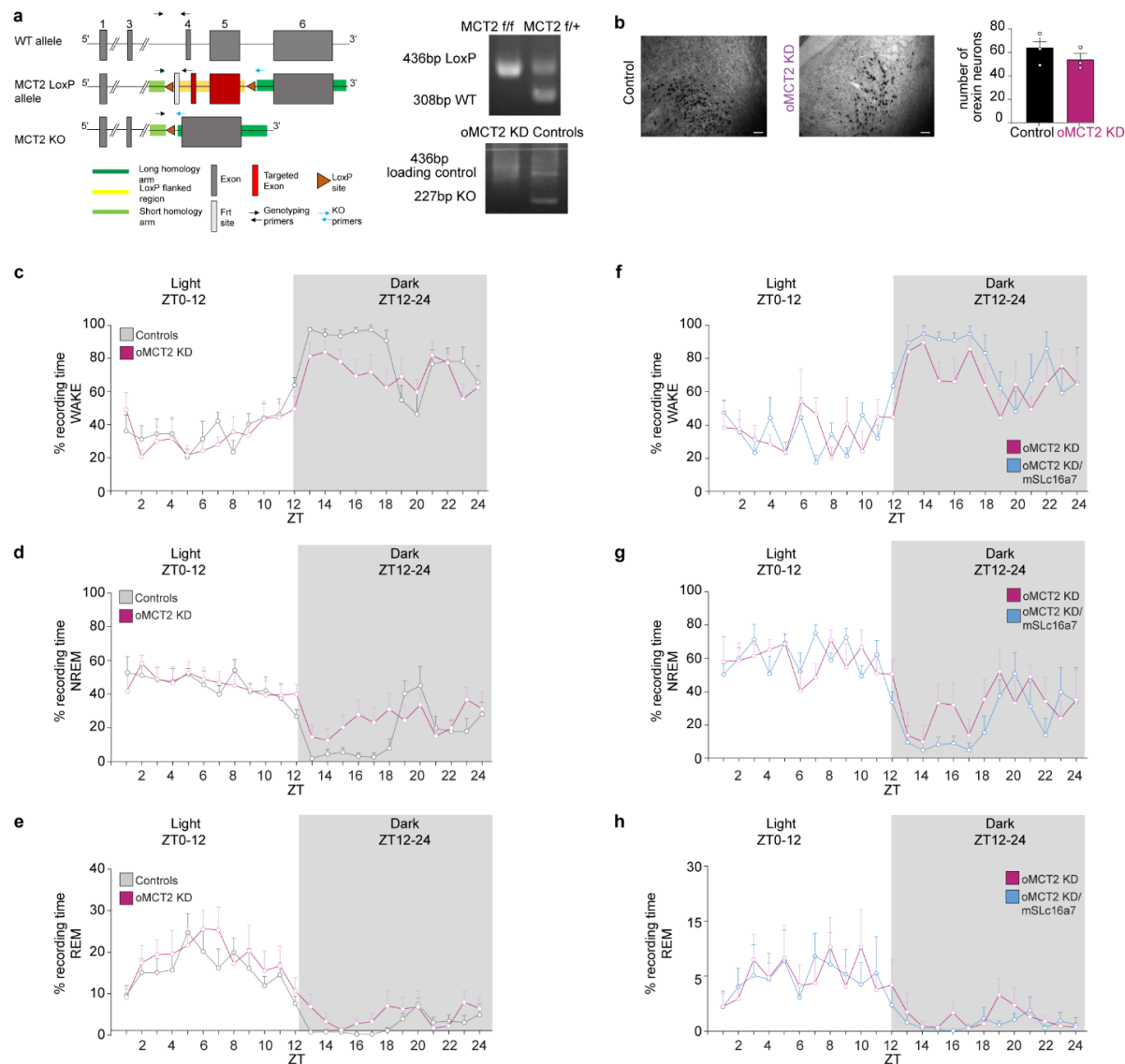
(c) Representative hypnograms of control mice and aMCT1 KD mice during 24 h EEG recordings (W – wake; N – NREM and R – REM).

(d) Quantification of the average percentage of time spent in wake, NREM or REM sleep during the 24h recording phase in aMCT1 KD mice compared to control mice.

(e) Average of the number of wake, NREM and REM episodes during the 24h recording phase in aMCT1 KD mice compared to control mice.

(f) Average duration of the wake, NREM and REM episodes during the 24h recording phase.

(aMCT1 KD n=10; controls n=15, unpaired t test; *p<0.05, **p<0.01).



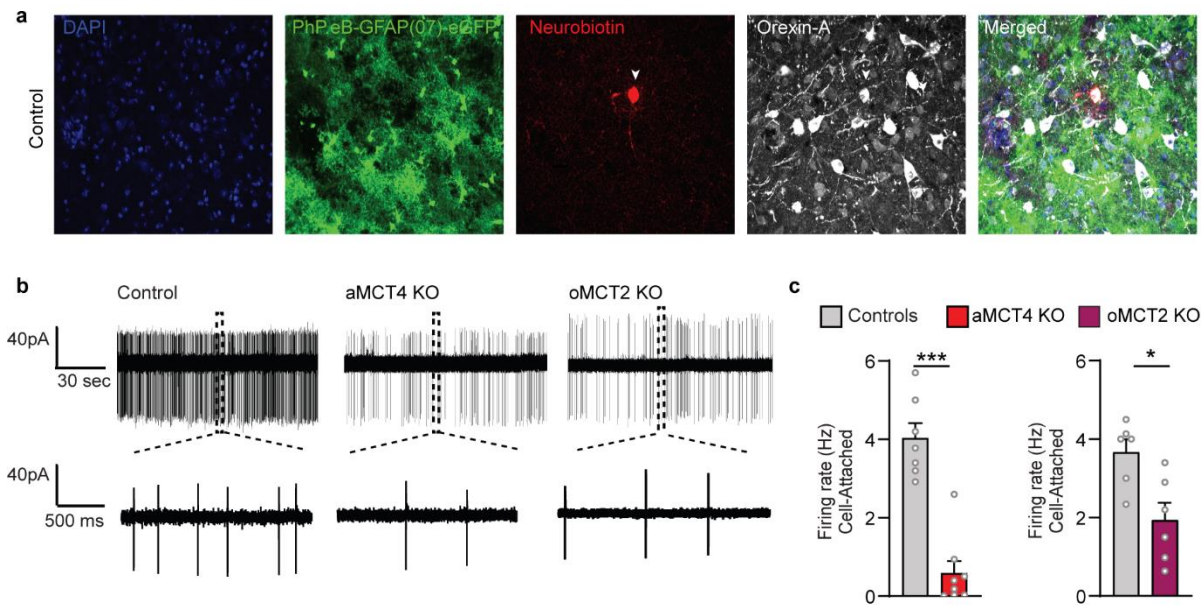
Supplementary Figure 5: Orexinergic knockdown of MCT2

(a) Diagram of the MCT2 wild-type allele, LoxP flanked allele and KDO allele (left panel). Right panels show genotype PCR for the floxed MCT2 allele in homozygous (MCT2 f/f) and heterozygous (MCT2 f/+) mice and the genotyping results of oMCT2 KDO mouse and control mouse.

(b) Representative immunohistochemical micrographs representing Orexin-A expression in control mice (n=3) and oMCT2 KDO mice (n=3) and quantification showing no differences between groups (unpaired t test). Scale bar = 50 μ m.

(c - e) Averaged percentage of the time spent in wake (c), NREM (d), and REM sleep (e) per hour in oMCT2 KD mice compared to control mice. (Controls n=7, oMCT2 KD n=7, Two-Way ANOVA followed by Sidak post hoc test)

(f - h) Averaged percentage of the time spent in wake (f), NREM (g), and REM sleep (h) per hour in oMCT2 KD mice upon MCT2 re-expression. (n=5, Two-Way ANOVA followed by Sidak post hoc test)

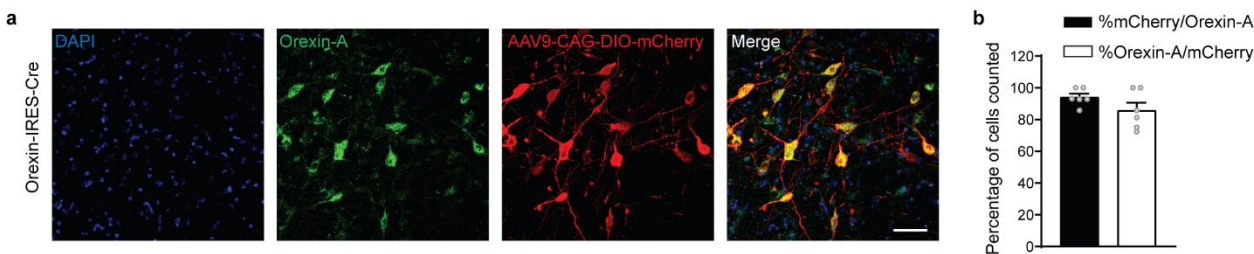


Supplementary Fig. 6: Deletion of astrocytic MCT4 and orexinergic MCT2 decreases spontaneous tonic firing of orexinergic neurons.

(a) Brain slice from a control mouse injected with PhPeB-GFAP(07)-eGFP into the LH showing Cre:GFP expression (green) in astrocytes. The image illustrates the Neurobiotin-filled neuron (red) colocalizing with the orexinergic marker (Orexin-A, white) indicated by the arrowhead. DAPI nuclear staining (blue). Scale bar, 20 μ M.

(b) Representative cell-attached recordings in orexinergic neurons from control mice (left), aMCT4 KD mice (middle) and oMCT2 KD mice (right). The bottom traces show an expanded timescale of those recordings.

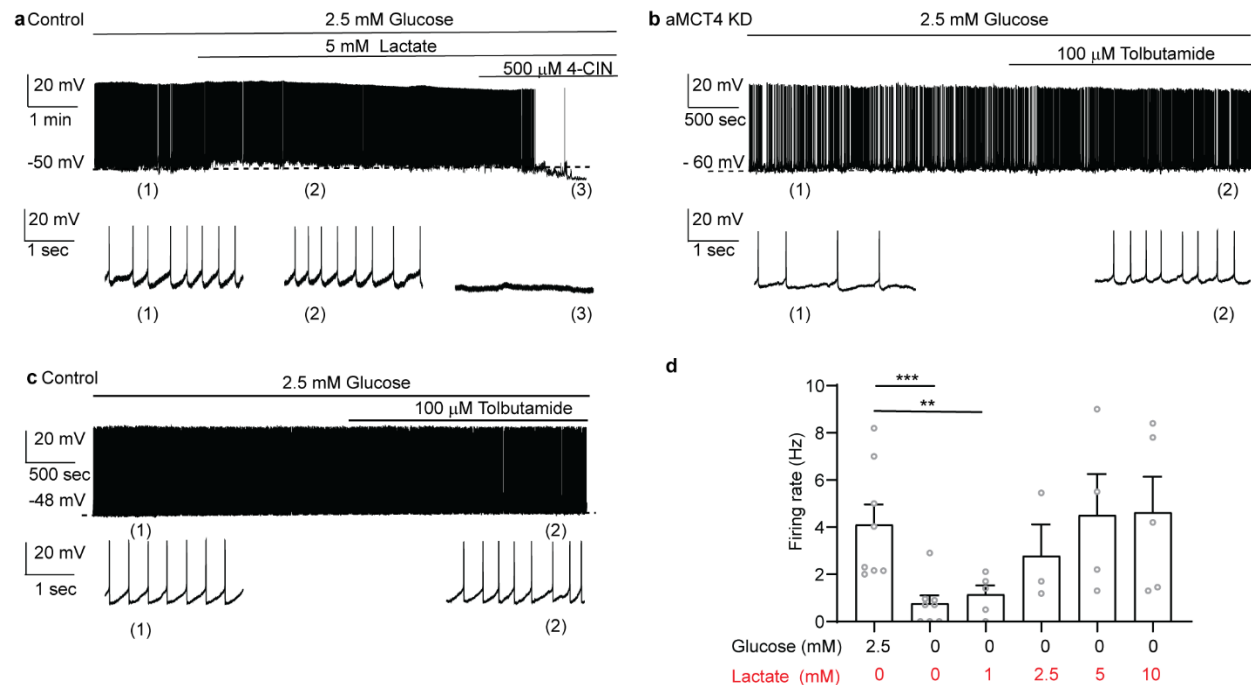
(c) Average firing rate in cell-attached mode confirms a decrease in activity in orexinergic neurons in aMCT4 KD (Controls, n=7 cells from four mice and aMCT4 KD, n=8 cells from five mice; Mann-Whitney test, ***p < 0.001) and oMCT2 KD (Controls, n= 6 cells from three mice and oMCT2 KD mice, n=6 cells from three mice; Mann-Whitney test, *p < 0.05).



Supplementary Fig. 7. Selective expression of Cre recombinase in orexinergic neurons in the LH.

(a) Section of the LH from Orexin-IRES-Cre mouse stained with an antibody against orexin-A and DAPI (nuclear staining) 15 days after injection of AAV9-CAG-DIO-mCherry into the LH. Cre:mCherry-expressing cells (red) were positive for Orexin-A (green). Scale bar, 20 μ M.

(b) Percentage of mCherry+ cells (expressing CRE) that are Orexin-A+ (orexinergic neurons) and percentage of Orexin-A+ cells that are mCherry+. n=6 brain sections from four Orexin-IRES-Cre mice.



Supplementary Fig. 8: Lactate does not increase the firing rate of orexin neurons in control mice.

(a) A representative trace shows that lactate does not affect orexinergic activity in Control cells, while 4-CIN strongly hyperpolarizes and decreases firing in the same cell, even in the presence of extracellular lactate

(b-c) Tolbutamide increases the activity of an orexinergic neuron from aMCT4KO mice (b) but not in control cell (c).

(d) Whole-cell recordings, manipulating lactate concentrations (1, 2.5, 5, and 10 mM) in the absence of glucose, ([2.5 mM Glucose, 0 mM Lactate], n = 8 cells/5 mice; [0 mM Glucose, 0 mM Lactate], n = 8 cells/5 mice; [0 mM Glucose, 1 mM Lactate], n = 5 cells/5 mice; [0 mM Glucose, 2.5 mM Lactate], n = 3 cells/3 mice; [2.5 mM Glucose, 5 mM Lactate], n = 4 cells/4 mice; [0 mM Glucose, 10 mM Lactate], 5 cells/4 mice). Dunnett's multiple comparison test; ***p < 0.001, **p < 0.01.