

METHOD

Fast and accurate single-cell RNA-Seq analysis by clustering of transcript-compatibility counts

Vasilis Ntranos^{1†}, Govinda M. Kamath^{2†}, Jesse Zhang^{2†}, Lior Pachter^{*3} and David N. Tse^{*2,1}

*Correspondence:

lpachter@math.berkeley.edu
dntse@stanford.edu

³Departments of Mathematics and
Molecular and Cell Biology ,
University of California, Berkeley,

²Department of Electrical
Engineering, Stanford University,
Full list of author information is
available at the end of the article

[†]Equal contributor

Abstract

Current approaches to single-cell transcriptomic analysis are computationally intensive and require assay-specific modeling which limit their scope and generality. We propose a novel method that departs from standard analysis pipelines, comparing and clustering cells based not on their transcript or gene quantifications but on their transcript-compatibility read counts. In re-analysis of two landmark yet disparate single-cell RNA-Seq datasets, we show that our method is up to two orders of magnitude faster than previous approaches, provides accurate and in some cases improved results, and is directly applicable to data from a wide variety of assays.

Introduction

Single-cell RNA-Seq (scRNA-Seq) has proved to be a powerful tool for probing cell states [1–5], defining cell types [6–9], and describing cell lineages [10–13]. These applications of scRNA-Seq all rely on two computational steps: quantification of gene or transcript abundances in each cell and clustering of the data in the resulting abundance \times cell expression matrix [14, 15]. There are a number of challenges in both of these steps that are specific to scRNA-Seq analysis. While methods for transcript/gene abundance estimation from bulk RNA-Seq have been extensively tested and benchmarked [16], the wide variety of assay types in scRNA-Seq [17–25] have required a plethora of customized solutions [2, 6, 7, 9, 11–13, 24, 26–37] that are difficult to compare to each other. Furthermore, the quantification methods used all rely on read alignment to transcriptomes or genomes, a time consuming step that will not scale well with the increasing numbers of reads predicted for scRNA-Seq [15, 38]. Clustering based on scRNA-Seq expression matrices can also require domain specific information, e.g. temporal information [33] or functional constraints [37] so that in some cases hand curation of clusters is performed after unsupervised clustering [7].

In [39], a method of collapsing bulk read alignments into “equivalence classes” of reads was introduced for the purpose of estimating alternative splicing isoform frequencies from bulk RNA-Seq data. Each equivalence class consists of all the reads that are compatible with the same set of transcripts. (See Figure 1 for an example.) The collapsing of reads into equivalence classes was initially introduced to allow for significant speedup of the E-step in the expectation-maximization (EM) algorithm used in some RNA-Seq quantification programs [40, 41], as the read counts in the equivalence classes, or *transcript-compatibility counts* (TCC), correspond to the sufficient statistics for a standard RNA-Seq model [42]. In other words, the use

of transcript-compatibility counts was an intermediate computation step towards quantifying transcript abundances. In this paper we instead consider the direct use of such counts for the comparison and clustering of scRNA-Seq cells. Figure 2 shows an outline of a method we have developed for clustering and analyzing scRNA-Seq data; the key idea is to base clustering not on the quantification of transcripts or genes but on the transcript-compatibility counts for each cell. We note that equivalence classes have also been used in [43, 44] to define similarity scores between *de novo* assembled transcripts.

To better understand the relevance of transcript-compatibility counts, consider their relationship to “gene-level” counts used in many RNA-Seq analyses. In the same way that “genes” represent groupings of transcripts [45], equivalence classes as introduced by [39] are also groups of transcripts. However while the former is a biologically motivated construction, the latter is technical, consisting of groupings that capture the extent of ambiguous multiple mappings among reads. The lack of direct biological interpretation of equivalence classes makes transcript-compatibility counts less intuitive; however, as we will show, there are two significant advantages to working with them: 1) unlike transcript or gene-level quantifications, transcript-compatibility counts can be computed without a read-generation model, and hence a single clustering pipeline based on transcript-compatibility counts can be used across a wide range of scRNA-Seq assays; 2) transcript-compatibility counts can be computed by pseudoalignment, a process that does not require read alignment and can be done extremely efficiently [41].

To demonstrate both the general applicability of our method as well as its accuracy, we re-analyzed data from two recently published scRNA-Seq papers: the pseudotemporal ordering of primary human myoblasts by [12] and the cell classification in the mouse cortex and hippocampus by [7]. We show that not only are we able to recapitulate the analyses of the papers two orders of magnitude faster than previously possible, but we also provide a refinement of the published results, suggesting that our approach is both fast and accurate. To demonstrate both the general applicability of our method as well as its accuracy, we re-analyzed data from two recently published scRNA-Seq papers: the pseudotemporal ordering of primary human myoblasts by [12] and the cell classification in the mouse cortex and hippocampus by [7]. The speedup of our method makes single-cell RNA-Seq analysis interactive for the first time: sensitivity of results to parameters and annotations can be easily explored and analyses can be easily reproduced by individuals without access to significant compute resources. Furthermore, the efficiency of our methods will take on increasing significance as single-cell RNA sequencing scales to experiments with hundreds of thousands of cells and improved technologies make the acquisition of single-cell data easier and faster (for example [46]). In addition, we also illustrate the advantages of the broad applicability of our approach via its suitability to a multitude of assays. Existing pipelines must be tailored to specific assays making it difficult to perform meta-analyses and to compare results across experiments.

Results

Transcript-compatibility counts from pseudoalignments

To demonstrate the effectiveness of transcript-compatibility counts for scRNA-Seq analysis, we first examined how efficiently they can be computed. While transcript-compatibility counts can be extracted from read alignments (e.g. in SAM/BAM format), they do not require the full information contained in alignments. Instead, we examined the speedup possible with pseudoalignment [41], which obtains for each read the set of transcripts it is compatible with and therefore can be directly used to obtain transcript-compatibility counts.

Figure 3 shows the speed of obtaining transcript-compatibility counts via pseudoalignment in comparison to the time required to quantify RNA-Seq data with other approaches. The key result relevant for single-cell analysis is the scalability of pseudoalignment for obtaining transcript-compatibility counts (Figure 3 and Supplementary Figure 2). The fixed extra cost for aligning (rather than pseudoaligning) reads for each cell is small, but when extrapolated to hundreds of thousands of cells becomes a significant (computational) cost.

Pseudotime for differentiating human myoblasts

The recently published Monocle software [12] that builds on the Cufflinks program [47] is rapidly becoming a standard tool for scRNA-Seq analysis. We therefore sought to compare our approach to Monocle, and in order to do so began with a re-analysis of the data in [12]. Figure 4 shows the temporal ordering of differentiating primary human myoblasts using transcript-compatibility counts clustering based on the Jensen-Shannon metric and the affinity propagation algorithm (see Methods). We note that unlike Cufflinks, which consists of an explicit model of RNA-Seq suitable for the data in [12] but not necessarily for other assays, our transcript-compatibility counts make no assumption about the nature of the data. Furthermore, while the re-analysis appears to match that of [12], affinity propagation with different parameters provided a more refined clustering, possibly capturing seven stages of myoblast differentiation (see also Supplementary Figure 3).

A central idea in pseudo-temporal ordering of cells relies upon the construction of a minimum spanning tree (MST) over the pairwise distances of their corresponding gene expression vectors [48]. This attempts to capture the trajectory of a hypothetical cell that gradually “moves” through different cellular states or differentiation stages in a high-dimensional gene expression space. Our results show that the same concept can be applied to transcript-compatibility counts. A key step in Monocle is to *first* reduce the dimensionality of the data by independent component analysis (ICA) and *then* compute the MST based on Euclidean distances on the plane. Here we take a different approach and compute the MST on “cluster centers” in high dimensions (See Methods). Both approaches aim to battle the biological and technical noise that is inevitably introduced in scRNA-Seq experiments. Even though we could have used Monocle directly on transcript-compatibility counts, the design and comparison of specialized tools is beyond the scope of this paper.

Figure 4*d* validates the three primary clusters and the pseudo-temporal ordering obtained by our method based on three key myoblast differentiation markers, *MYOG*, *CDK1* and *PDGFRA* (see Supplementary Figure 4 for an additional set

of genes taken from [12]). Interestingly, the expression of these genes gradually evolves over the pseudo-temporally ordered clusters, capturing both the underlying differentiation trajectory of proliferating cells to myoblasts, and the corresponding branching towards mesenchymal cells, as was observed in [12].

Finally, we should point out that although the three primary clusters of [12] are evident in our results, they are not identical. This naturally raises the question of whether clustering on (high-dimensional) transcript-compatibility counts could possibly lead to cell mis-classification. Our results show that this is not the case. In Figure 5 we investigated one cell that seemed to have been severely mis-classified by our method as a differentiating myoblast while it was identified as a proliferating cell by Monocle. However, an analysis of the expression levels of 12 marker genes obtained from [12] shows that this cell displays more similarity to differentiating myoblasts than proliferating cells. Overall our results seem to suggest that transcript-compatibility counts, being directly obtained from sequenced reads, might constitute a less noisy representation of the “transcriptomic state” of a cell compared to the one obtained by quantifying its gene expression.

Cell classification in the mouse cortex and hippocampus

The re-analysis of [12] shows that clustering of transcript-compatibility counts can be useful on a single dataset, but we believe that the true power of our approach lies in its broad applicability to multiple single-cell assays. In contrast to the standard quantification pipeline, obtaining transcript-compatibility counts does not require a read-generation model; our method can be directly applied to a wide range of scRNA-Seq datasets and transcript-compatibility counts can be used to analyze sequenced reads without any assay-specific information. To make this point, we re-analyzed a recent large scRNA-Seq experiment published earlier this year [7] that uses an assay based on unique molecular identifiers (UMI). In contrast to [12] where paired-end reads were sampled from fragments covering the entire length of the transcripts, [7] used single-end reads that were only obtained from the 3'-end of the transcripts.

Zeisel *et al.* [7] examined a very diverse population of 3005 cells obtained from the cortical and hippocampal regions of the mouse brain. In order to analyze this complex dataset, the authors developed a state-of-the-art hierarchical bi-clustering method called BackSPIN (based on SPIN [30]) and were able to identify 47 distinct sub-populations of cells within nine major brain cell types. This fine-grained analysis also revealed a previously unknown post-mitotic oligodendrocyte sub-class, referred to as Oligo1 in [7].

Figure 6 shows the clusters obtained by applying our method to the above dataset and compares our method's clustering accuracy to various quantification-based methods. In order to systematically assess the clustering accuracy, we iteratively sub-sampled cells from two different cell types at random and evaluated the ability of each method to distinguish between these types. Since the development of specialized clustering algorithms is orthogonal to our paper, we compared based on the same clustering algorithm throughout (see Methods). Our results indicate that transcript-compatibility counts can be more accurate than standard model-based RNA-Seq quantification tools (such as eXpress) that try to estimate the underlying

read-generation model from the data. Our transcript-compatibility counts based method is in fact able to achieve similar accuracy with the assay-specific quantification approach used in [7] (that explicitly takes into account the significant 3'-end bias in this dataset). Clustering transcript abundance quantifications output by kallisto results in lower accuracy due to the mismatch between kallisto's read-generation model and this dataset, further emphasizing the importance of using transcript-compatibility counts which are computed without using any such model.

Quite remarkably, our method (via affinity propagation on all cells) was further able to recover the Oligo1 cluster of cells, showing that transcript-compatibility counts can indeed capture distinct cell signatures without actually quantifying their gene expression (Figure 6, Methods). Overall, in our experiments we observed that unsupervised clustering of transcript-compatibility counts typically yielded more than 47 clusters, which was also the case in [7]. Some of our clusters were very small, probably capturing outlier cells, while others seemed to be further splitting the 47 cell subtypes identified in [7].

To further investigate this, we focused on another oligodendrocyte sub-population, referred to as Oligo3 in [7]. As reported in [7], Oligo3 cells were almost exclusively observed in the somatosensory cortex and were identified by the authors as being in an intermediate stage of maturation – in between premyelinating and myelinating oligodendrocytes. Even though the Oligo3 cells appear to be well-clustered together, as visualized by t-SNE (Figure 7a), affinity propagation on transcript-compatibility counts with various parameters consistently separated them into two sub-clusters. Our results in Figure 7b seem to suggest that a sub-population of Oligo3 cells (captured by one of our sub-clusters) expresses an unusual signature of endothelial/vascular genes on top of the expected myelin related genes. Interestingly, similar findings have been reported recently in [37], suggesting a possible (experimental) contamination of several oligodendrocyte cells in the dataset at hand.

Discussion

In this paper we introduced a novel method that uses transcript-compatibility counts – instead of gene expression profiles – as distinct cell signatures for clustering single cell data. Note, however, that the main focus of our method is not about *how* to cluster (i.e., the particular choice of clustering algorithms), but rather *what* to cluster on. To emphasize this point we considered simple, “off-the-shelf” clustering methods, that directly use the corresponding TCCs as their input. Interestingly, while these methods may not be able to recover accurate clusters when applied to gene expression vectors (see Supplementary Figure 6 or [7, Figure S3] for example), our results showed that TCCs maintain all the necessary information to recover the analyses of [12] and [7].

Even though clustering alone can reveal important information about a single-cell RNA-Seq experiment, further biological interpretation of the results (marker gene identification or differential expression) requires some form of quantification of expression profiles within and in between clusters. So it is natural for one to think that eventually the quantification bottleneck will still manifest itself in single-cell analysis. A key observation however is that given an accurate clustering of the cells, each and every individual cell's gene expression profile is no longer needed;

one can extract an accurate *statistical* representation of the gene expression within each cluster – without having to quantify all cells separately. In particular, one can quantify the aggregate gene expression in each cluster (cluster centers) by pooling single-cell TCCs together and further estimate the corresponding gene variability by subsampling and quantifying only a few cells per cluster. For example, in Supplementary Figure 5 we used kallisto to quantify subsampled cells and the corresponding cluster centers (after clustering on TCCs) for the Trapnell *et al.*'s dataset and generated results that are very similar to the ones obtained in Figure 4 (where the corresponding gene expression profiles were obtained from [12]). Our method can therefore be used to effectively *reverse* the quantification and clustering steps in the conventional pipeline and potentially provide further end-to-end processing gains, depending on the needs/goals of each scRNA-Seq experiment. Overall, we believe that clustering before quantifying is a promising future direction for scRNA-Seq analysis which may lead to more robust and accurate quantification algorithms.

Conclusions

The extraordinary developments in single-cell RNA-Seq technology over the past few years have demonstrated that “single-cell resolution” is not just a gimmick but an unprecedented tool for probing transcriptomes that can reveal the inner-workings of developmental programs and their resulting tissues. However the computational challenges of scRNA-Seq analysis, already very high due to the large number of cells to analyze, have been further exacerbated by the smorgasbord of assays that each introduce unique technical challenges.

The new method we have proposed and evaluated in this paper, namely analysis of scRNA-Seq based on transcript-compatibility counts, offers an efficient, accurate and broadly applicable solution for extracting information from scRNA-Seq experiments. In the same way that single-cell analysis can be viewed as the ultimate resolution for transcriptomics, transcript-compatibility counts are the most direct way to “count” reads. While we have focused on clustering of cells in this paper, we believe that transcript-compatibility counts may have applications in many other sequencing-based assays, and that further development of methods based on such counts offers a fruitful avenue of exploration.

The ability to obtain transcript-compatibility counts by pseudoalignment is a benefit that has its own implications and applications. For example, the speed of pseudoalignment facilitated quick experimentation with our method, and in assessing our accuracy on different datasets one discovery was that much less sampling than is currently performed is necessary to cluster cells. In the re-analysis of [7], we found that the main results, namely the clustering of cells and identification of cell types, were achievable with only 1% of the data (see Figure 8a and Supplementary Figure 1). This observation has significant implications for scRNA-Seq as it suggests that for clustering of cells, low-coverage sequencing may be sufficient thus allowing for larger experiments with more cells. Moreover, this low-coverage clustering performance can be achieved using our method, which is not tailored to the specific scRNA-Seq assay.

Methods

The code used to generate the results presented in this paper is available online on GitHub [49]. The *Mus musculus* transcriptome assembly used was GRCm38. The *Homo sapiens* transcriptome assembly used was GRCh38. The reference genome used for HISAT was build 10 of the mouse genome (mm10) from the UCSC genome browser.

Computation of transcript-compatibility counts

In our implementation of the method, we use kallisto to compute transcript-compatibility counts via pseudoalignment (avoiding the quantification step that is usually performed when running kallisto altogether). In particular, we utilized the "pseudo" option of the kallisto RNA-Seq program which computes equivalence classes of reads after pseudoalignment. We used kallisto version 0.42.3 with k set to kallisto's default value of 31. Even though kallisto pseudoalignment is a natural approach to obtain transcript-compatibility counts, one can in principle extract the same information from exact read alignments. To explore this alternative, we used HISAT (with the no-spliced-alignment option enabled) to align reads on the mouse transcriptome (GRCm38) in the case of Zeisel's dataset and the human transcriptome (GRCh38) in the case of Trapnell's dataset. Then, we generated the corresponding "alignment-based TCCs" by directly counting the number of multi-mapped reads aligned to each set of transcripts, and evaluated their performance in Supplementary Figure 8.

Transcript-compatibility counts based on UMI information

The dataset of [7] has reads with unique molecular identifiers (UMIs). UMIs are typically used in scRNA-Seq to correct for PCR bias; biological copies of a transcript (distinct molecules) can be identified based on their UMIs. This information can be utilized in generating the transcript-compatibility counts from equivalence classes. Instead of counting all the reads in each equivalence class, we only count the reads with distinct UMIs. Transcript-compatibility counts with UMIs are shown in Figure 6b and Figure 8a (represented as "TCC with UMI" in the figures).

Clustering Methodology

On obtaining the transcript-compatibility counts for each cell, we normalize by the total number of mapped reads to obtain a probability distribution called the transcript-compatibility count distribution or TCC distribution. We then compute the square-root of the Jensen-Shannon divergence [50] between the TCC distributions for each pair of cells. As a distance metric which satisfies the triangle [51] inequality, the square-root of Jensen-Shannon divergence is a natural choice for computing pairwise distances between two probability distributions. However, the results obtained here are not contingent on using the square root of Jensen-Shannon divergences as the measure of distances, and quite similar results are obtained when we use other distances between probability distributions such as the ℓ_1 distance to compute the pairwise distance matrix, (see Supplementary Figure 1). ℓ_1 distance (which is just twice the total-variation distance) in fact seems to perform better than Jensen-Shannon distance for low coverage (Supplementary Figure 1b). In contrast,

Euclidean distance (ℓ_2 distance) seems to perform much worse (see Supplementary Figure 1). The fact that Euclidean distance is not a good distance metric to measure distances between probability distributions is widely documented (see for instance [52]).

All clustering carried out in this paper were done using off-the-shelf clustering methods.

We used spectral clustering using the pairwise distance matrices when we know the number of clusters in the data. This includes Figures 6b, 8a, and Supplementary Figure 1b with 2 clusters for the pairwise distance matrix (from TCC distributions) obtained for the data from [7].

The clustering method used when the number of clusters is not known is affinity propagation [53]. This is an unsupervised clustering algorithm based on message passing, which needs a pairwise similarity matrix as input. The pairwise similarity matrix is computed as the negative of the pairwise distance matrix that was computed.

To evaluate the clustering accuracy of our method in Figure 6b, we performed binary classification tests using the labels reported in [7] as the ground truth. In particular, we randomly sub-sampled two different types of cells and evaluated the ability of each pipeline to separate them into two clusters via spectral clustering. We performed these binary classification tests between 1) the sub-classes Oligo1 (45 cells) and Oligo4 (106 cells), 2) the cell types Astrocytes (198 cells) and Interneurons (290 cells), and 3) the more general cell types neurons (1628 cells) and non-neurons (1377 cells). The error rates for each test were obtained by randomly sampling 22, 99 and 200 cells from each of the two labels respectively, averaged over 10 monte-carlo iterations.

For clustering the dataset of [7], we used affinity propagation with the default parameters which set the preference value equal to the median of the similarity scores and the damping parameter equal to 0.5. On doing this, we obtained 89 clusters. Of the 89 clusters obtained, cluster number 22 had the largest match with the set of cells the authors labeled as Oligo1 (which was the new type of cells discovered in [7]). 24 out of the 28 cells in the cluster were labeled Oligo1 by [7]. There were a total of 45 cells labeled Oligo1 in [7] out of the total of 3005 considered. This is investigated in Figure 6c.

Also, affinity propagation with different parameters seems to split the class labelled Oligo3 in [7] into 2 classes. This is investigated in Figure 7, where the two classes considered were classes obtained with parameters set as before.

For clustering the dataset of [12], we used affinity propagation with preference parameter set to 1.3 and damping parameter set to 0.95 to obtain three clusters in Figure 4. To obtain 8 clusters on the dataset of [12], we used affinity propagation with preference parameter set to 0.6 and damping parameter set to 0.95 to obtain 8 clusters. Then after collapsing any cluster with less than 5 cells into the cluster closest to it, we obtain the seven clusters investigated in Figure 5. More details regarding our parameter choices for affinity propagation in this dataset are provided in Supplementary Figure 7.

Partial order on clusters

On the [12] data set, for the seven clusters obtained, we first find the centroid TCC distribution of each cluster as the mean TCC distribution of all cells in the cluster. Then, we compute the pairwise Jensen-Shannon distances between the centroid TCC distributions (cluster centers). We then run a minimum weight spanning tree on the complete graph between the cluster centers with weights given by the computed pairwise distances. This gives us a partial-order on the clusters, which is investigated in Figure 4 and Supplementary Figure 3.

Quantification

In this paper, we used kallisto and eXpress as representative methods for model-based quantification as they demonstrate similar accuracy to other available quantification tools [41]. In particular, for Zeisel *et al.*'s dataset (Figures 6*b* and 8*a*) we used these tools as a “negative control” to demonstrate the importance of the read-generating model when using quantified abundances to cluster single cell data. Although the significant mismatch between the assumed model (i.e., full transcript length coverage) and the 3'-end bias in this dataset is expected to affect the quantification accuracy for each individual cell, our results show that such a mismatch further impacts the accuracy of clustering and cell-type classification. To evaluate the cell-type classification performance of kallisto and eXpress, we took the minimum of the error rates obtained with bias modeling turned on and off.

For the Trapnell *et al.* dataset, we used kallisto to quantify transcript abundances and obtain the gene expression profiles within the clusters obtained from TCCs. Note that the read-generating model in this dataset is similar to the standard RNA-Seq model that kallisto uses for quantification. More specifically, in Supplementary Figure 5*a* we quantified the corresponding cluster centers by running kallisto's EM algorithm on the pooled TCCs of each cluster. Using kallisto in this setting resembles bulk RNA-Seq quantification applied to the pooled reads coming from each individual cluster (instead of the entire population of cells). In Supplementary Figure 5*b* we further quantified randomly sub-sampled cells (20 cells per cluster) to obtain an accurate estimate of the gene expression variability within each cluster.

Visualization of cells and clusters

We used t-SNE [54] to visualize the cells and clusters in Figures 6*a*, 8*b*, and Supplementary Figure 1*a*.

The left panel of Figure 4*d*, 5*a*, 5*b* and Supplementary Figure 4*a* was created using an implementation [55] of the diffusion map algorithm of [56].

Competing interests

The authors declare that they have no competing interests.

Author's contributions

VN,GMK and JZ conceived the idea of clustering without quantification, performed analyses of data, analyzed and interpreted results and wrote the manuscript. DNT and LP interpreted results, supervised the project and wrote the manuscript.

Acknowledgements

We thank Páll Melsted for implementing the pseudo command in kallisto. This is the command that allows for direct output of transcript-compatibility counts via pseudoalignment. Thanks to Bo Li for useful discussions about single-cell RNA-Seq assays and their biases. GMK and JZ are supported by the Center for Science of Information, an NSF Science and Technology Center, under grant agreement CCF-0939370. VN is supported in part by the Center for Science of Information and in part by a gift from Qualcomm Inc. LP is supported in part by the National Human Genome Research Institute of the National Institutes of Health under award number R01HG006129. DNT is supported in part by the Center of Science of Information and in part by the National Human Genome Research Institute of the National Institutes of Health under award number R01HG008164.

Author details

¹Department of Electrical Engineering and Computer Sciences, University of California, Berkeley,. ²Department of Electrical Engineering, Stanford University,. ³Departments of Mathematics and Molecular and Cell Biology , University of California, Berkeley,.

References

- Patel, A.P., Tirosh, I., Trombetta, J.J., Shalek, A.K., Gillespie, S.M., Wakimoto, H., Cahill, D.P., Nahed, B.V., Curry, W.T., Martuza, R.L., Louis, D.N., Rozenblatt-Rosen, O., Suvà, M.L., Regev, A., Bernstein, B.E.: Single-cell RNA-seq highlights intratumoral heterogeneity in primary glioblastoma. *Science* **344**(6190), 1396–1401 (2014). doi:10.1126/science.1254257
- Pollen, A.A., Nowakowski, T.J., Chen, J., Retallack, H., Sandoval-Espinosa, C., Nicholas, C.R., Shuga, J., Liu, S.J., Oldham, M.C., Diaz, A., Lim, D.A., Leyrat, A.A., West, J.A., Kriegstein, A.R.: Molecular Identity of Human Outer Radial Glia during Cortical Development. *Cell* **163**(1), 55–67. doi:10.1016/j.cell.2015.09.004
- Gaublomme, J.T., Yosef, N., Lee, Y., Gertner, R.S., Yang, L.V., Wu, C., Pandolfi, P.P., Mak, T., Satija, R., Shalek, A.K., Kuchroo, V.K., Park, H., Regev, A.: Single-Cell Genomics Unveils Critical Regulators of Th17 Cell Pathogenicity. *Cell* **163**(6), 1400–1412. doi:10.1016/j.cell.2015.11.009
- Kowalczyk, M.S., Tirosh, I., Heckl, D., Rao, T.N., Dixit, A., Haas, B.J., Schneider, R.K., Wagers, A.J., Ebert, B.L., Regev, A.: Single-cell RNA-seq reveals changes in cell cycle and differentiation programs upon aging of hematopoietic stem cells. *Genome Research* **25**(12), 1860–1872 (2015). doi:10.1101/gr.192237.115. <http://genome.cshlp.org/content/25/12/1860.full.pdf+html>
- Lande-Diner, L., Stewart-Ornstein, J., Weitz, C.J., Lahav, G.: Single-cell analysis of circadian dynamics in tissue explants. *Molecular Biology of the Cell* **26**(22), 3940–3945 (2015). doi:10.1091/mbc.E15-06.0403
- Usoskin, D., Furlan, A., Islam, S., Abdo, H., Lönnerberg, P., Lou, D., Hjerling-Leffler, J., Haeggstrom, J., Kharchenko, O., Kharchenko, P.V., Linnarsson, S., Ernfors, P.: Unbiased classification of sensory neuron types by large-scale single-cell RNA sequencing. *Nat Neurosci* **18**(1), 145–153 (2015). doi:10.1038/nn.3881
- Zeisel, A., Muñoz-Manchado, A.B., Codeluppi, S., Lönnerberg, P., La Manno, G., Jureus, A., Marques, S., Munguba, H., He, L., Betsholtz, C., Rolny, C., Castelo-Branco, G., Hjerling-Leffler, J., Linnarsson, S.: Cell types in the mouse cortex and hippocampus revealed by single-cell RNA-seq. *Science* **347**(6226), 1138–1142 (2015). doi:10.1126/science.aaa1934. <http://www.sciencemag.org/content/347/6226/1138.full.pdf>
- Burns, J.C., Kelly, M.C., Hoa, M., Morell, R.J., Kelley, M.W.: Single-cell RNA-Seq resolves cellular complexity in sensory organs from the neonatal inner ear. *Nat Commun* **6** (2015). doi:10.1038/ncomms9557
- Grün, D., Lyubimova, A., Kester, L., Wiebrands, K., Basak, O., Sasaki, N., Clevers, H., van Oudenaarden, A.: Single-cell messenger RNA sequencing reveals rare intestinal cell types. *Nature* **525**(7568), 251–255 (2015)
- Kafri, R., Levy, J., Ginzberg, M.B., Oh, S., Lahav, G., Kirschner, M.W.: Dynamics extracted from fixed cells reveal feedback linking cell growth to cell cycle. *Nature* **494**(7438), 480–483 (2013). doi:10.1038/nature11897
- Bendall, S.C., Davis, K.L., Amir, E.-a.D., Tadmor, M.D., Simonds, E.F., Chen, T.J., Shenfeld, D.K., Nolan, G.P., Pe'er, D.: Single-Cell Trajectory Detection Uncovers Progression and Regulatory Coordination in Human B Cell Development. *Cell* **157**(3), 714–725 (2014). doi:10.1016/j.cell.2014.04.005
- Trapnell, C., Cacchiarelli, D., Grimsby, J., Pokharel, P., Li, S., Morse, M., Lennon, N.J., Livak, K.J., Mikkelsen, T.S., Rinn, J.L.: The dynamics and regulators of cell fate decisions are revealed by pseudotemporal ordering of single cells. *Nat Biotech* **32**(4), 381–386 (2014). doi:10.1038/nbt.2859
- Buettner, F., Natarajan, K.N., Casale, F.P., Proserpio, V., Scialdone, A., Theis, F.J., Teichmann, S.A., Marioni, J.C., Stegle, O.: Computational analysis of cell-to-cell heterogeneity in single-cell RNA-sequencing data reveals hidden subpopulations of cells. *Nat Biotech* **33**(2), 155–160 (2015). doi:10.1038/nbt.3102
- Shapiro, E., Biezuner, T., Linnarsson, S.: Single-cell sequencing-based technologies will revolutionize whole-organism science. *Nat Rev Genet* **14**(9), 618–630 (2013). doi:10.1038/nrg3542
- Stegle, O., Teichmann, S.A., Marioni, J.C.: Computational and analytical challenges in single-cell transcriptomics. *Nat Rev Genet* **16**(3), 133–145 (2015). doi:10.1038/nrg3833
- Oshlack, A., Robinson, M., Young, M.: From RNA-seq reads to differential expression results. *Genome Biology* **11**(12), 220 (2010). doi:10.1186/gb-2010-11-12-220
- Tang, F., Barbacioru, C., Wang, Y., Nordman, E., Lee, C., Xu, N., Wang, X., Bodeau, J., Tuch, B.B., Siddiqui, A., Lao, K., Surani, M.A.: mRNA-Seq whole-transcriptome analysis of a single cell. *Nat Meth* **6**(5), 377–382 (2009). doi:10.1038/nmeth.1315
- Islam, S., Kjällquist, U., Moliner, A., Zajac, P., Fan, J.-B., Lönnerberg, P., Linnarsson, S.: Characterization of the single-cell transcriptional landscape by highly multiplex RNA-seq. *Genome Research* **21**(7), 1160–1167 (2011). doi:10.1101/gr.110882.110
- Ramsköld, D., Luo, S., Wang, Y.-C., Li, R., Deng, Q., Faridani, O.R., Daniels, G.A., Khrebtkova, I., Loring, J.F., Laurent, L.C., Schroth, G.P., Sandberg, R.: Full-length mRNA-Seq from single-cell levels of RNA and individual circulating tumor cells. *Nat Biotech* **30**(8), 777–782 (2012). doi:10.1038/nbt.2282
- Hashimshony, T., Wagner, F., Sher, N., Yanai, I.: CEL-Seq: Single-Cell RNA-Seq by Multiplexed Linear Amplification. *Cell Reports* **2**(3), 666–673 (2012). doi:10.1016/j.celrep.2012.08.003

21. Picelli, S., Bjorklund, A.K., Faridani, O.R., Sagasser, S., Winberg, G., Sandberg, R.: Smart-seq2 for sensitive full-length transcriptome profiling in single cells. *Nat Meth* **10**(11), 1096–1098 (2013). doi:10.1038/nmeth.2639
22. Sasagawa, Y., Nikaido, I., Hayashi, T., Danno, H., Uno, K., Imai, T., Ueda, H.: Quartz-Seq: a highly reproducible and sensitive single-cell RNA sequencing method, reveals non-genetic gene-expression heterogeneity. *Genome Biology* **14**(4), 31 (2013). doi:10.1186/gb-2013-14-4-r31
23. Jaitin, D.A., Kenigsberg, E., Keren-Shaul, H., Elefant, N., Paul, F., Zaretsky, I., Mildner, A., Cohen, N., Jung, S., Tanay, A., Amit, I.: Massively Parallel Single-Cell RNA-Seq for Marker-Free Decomposition of Tissues into Cell Types. *Science* **343**(6172), 776–779 (2014). doi:10.1126/science.1247651
24. Macosko, E.Z., Basu, A., Satija, R., Nemesh, J., Shekhar, K., Goldman, M., Tirosh, I., Bialas, A.R., Kamitaki, N., Martersteck, E.M., *et al.*: Highly Parallel Genome-wide Expression Profiling of Individual Cells Using Nanoliter Droplets. *Cell* **161**(5), 1202–1214 (2015). doi:10.1016/j.cell.2015.05.002
25. Klein, A.M., Mazutis, L., Akartuna, I., Tallapragada, N., Veres, A., Li, V., Peshkin, L., Weitz, D.A., Kirschner, M.W.: Droplet Barcoding for Single-Cell Transcriptomics Applied to Embryonic Stem Cells. *Cell* **161**(5), 1187–1201. doi:10.1016/j.cell.2015.04.044
26. Amir, E.-a.D., Davis, K.L., Tadmor, M.D., Simonds, E.F., Levine, J.H., Bendall, S.C., Shenfeld, D.K., Krishnaswamy, S., Nolan, G.P., Pe'er, D.: viSNE enables visualization of high dimensional single-cell data and reveals phenotypic heterogeneity of leukemia. *Nat Biotech* **31**(6), 545–552 (2013). doi:10.1038/nbt.2594
27. Mahfouz, A., van de Giessen, M., van der Maaten, L., Huisman, S., Reinders, M., Hawrylycz, M.J., Lelieveldt, B.P.F.: Visualizing the spatial gene expression organization in the brain through non-linear similarity embeddings. *Methods* **73**, 79–89 (2015). doi:10.1016/j.ymeth.2014.10.004
28. Shekhar, K., Brodin, P., Davis, M.M., Chakraborty, A.K.: Automatic Classification of Cellular Expression by Nonlinear Stochastic Embedding (ACCENSE). *Proceedings of the National Academy of Sciences of the United States of America* **111**(1), 202–207 (2014). doi:10.1073/pnas.1321405111
29. Islam, S., Zeisel, A., Joost, S., La Manno, G., Zajac, P., Kasper, M., Lonnerberg, P., Linnarsson, S.: Quantitative single-cell RNA-seq with unique molecular identifiers. *Nat Meth* **11**(2), 163–166 (2014). doi:10.1038/nmeth.2772
30. Tsafir, D., Tsafir, I., Ein-Dor, L., Zuk, O., Notterman, D.A., Domany, E.: Sorting points into neighborhoods (SPIN): data analysis and visualization by ordering distance matrices. *Bioinformatics* **21**(10), 2301–2308 (2005). doi:10.1093/bioinformatics
31. Qiu, P., Simonds, E.F., Bendall, S.C., Gibbs Jr, K.D., Bruggner, R.V., Linderman, M.D., Sachs, K., Nolan, G.P., Plevritis, S.K.: Extracting a cellular hierarchy from high-dimensional cytometry data with SPADE. *Nat Biotech* **29**(10), 886–891 (2011). doi:10.1038/nbt.1991
32. Levine, J.H., Simonds, E.F., Bendall, S.C., Davis, K.L., Amir, E.-a.D., Tadmor, M.D., Litvin, O., Fienberg, H.G., Jager, A., Zunder, E.R., Finck, R., Gedman, A.L., Radtke, I., Downing, J.R., Pe'er, D., Nolan, G.P.: Data-Driven Phenotypic Dissection of AML Reveals Progenitor-like Cells that Correlate with Prognosis. *Cell* **162**(1), 184–197 (2015). doi:10.1016/j.cell.2015.05.047
33. Marco, E., Karp, R.L., Guo, G., Robson, P., Hart, A.H., Trippa, L., Yuan, G.-C.: Bifurcation analysis of single-cell gene expression data reveals epigenetic landscape. *Proceedings of the National Academy of Sciences* **111**(52), 5643–5650 (2014). doi:10.1073/pnas.1408993111
34. Shin, J., Berg, D.A., Zhu, Y., Shin, J.Y., Song, J., Bonaguidi, M.A., Enikolopov, G., Nauen, D.W., Christian, K.M., Ming, G.-I., Song, H.: Single-Cell RNA-Seq with Waterfall Reveals Molecular Cascades underlying Adult Neurogenesis. *Cell Stem Cell* **17**(3), 360–372. doi:10.1016/j.stem.2015.07.013
35. Haghighi, L., Buettner, F., Theis, F.J.: Diffusion maps for high-dimensional single-cell analysis of differentiation data. *Bioinformatics* (2015). doi:10.1093/bioinformatics
36. Moignard, V., Woodhouse, S., Haghighi, L., Lilly, A.J., Tanaka, Y., Wilkinson, A.C., Buettner, F., Macaulay, I.C., Jawaid, W., Diamanti, E., Nishikawa, S.-I., Piterman, N., Kouskoff, V., Theis, F.J., Fisher, J., Gottgens, B.: Decoding the regulatory network of early blood development from single-cell gene expression measurements. *Nat Biotech* **33**(3), 269–276 (2015). doi:10.1038/nbt.3154
37. Fan, J., Salathia, N., Liu, R., Kaeser, G., Yung, Y., Herman, J.L., Kaper, F., Fan, J.-B., Zhang, K., Chun, J., Kharchenko, P.: Characterizing transcriptional heterogeneity through pathway and gene set overdispersion analysis. *bioRxiv* (2015). doi:10.1101/026948
38. Saliba, A.-E., Westermann, A.J., Gorski, S.A., Vogel, J.: Single-cell RNA-seq: advances and future challenges. *Nucleic Acids Research* (2014). doi:10.1093/nar
39. Nicolae, M., Mangul, S., Mandoiu, I.I., Zelikovsky, A.: Estimation of alternative splicing isoform frequencies from RNA-Seq data. *Algorithms for Molecular Biology* **6**(1), 9 (2011)
40. Patro, R., Mount, S.M., Kingsford, C.: Sailfish enables alignment-free isoform quantification from RNA-seq reads using lightweight algorithms. *Nature biotechnology* **32**(5), 462–464 (2014)
41. Bray, N., Pimentel, H., Melsted, P., Pachter, L.: Near-optimal probabilistic RNA-Seq quantification. *Nature Biotechnology*, in press (2016)
42. Pachter, L.: Models for transcript quantification from RNA-Seq. *arXiv preprint arXiv:1104.3889* (2011)
43. Davidson, N.M., Oshlack, A.: Corset: enabling differential gene expression analysis for de novo assembled transcriptomes. *Genome Biol* **15**(7), 410 (2014)
44. Srivastava, A., Sarkar, H., Patro, R.: RapMap: A Rapid, Sensitive and Accurate Tool for Mapping RNA-seq Reads to Transcriptomes. *bioRxiv*, 029652 (2015)
45. Gerstein, M.B., Bruce, C., Rozowsky, J.S., Zheng, D., Du, J., Korbel, J.O., Emanuelsson, O., Zhang, Z.D., Weissman, S., Snyder, M.: What is a gene, post-ENCODE? History and updated definition. *Genome research* **17**(6), 669–681 (2007)
46. 10x Genomics to Unveil New Single-Cell Genetic Analysis Product. [Online; accessed 16-February-2016] (2016). <http://www.10xgenomics.com/news/10x-genomics-to-unveil-new-single-cell-genetic-analysis-product>
47. Trapnell, C., Williams, B.A., Pertea, G., Mortazavi, A., Kwan, G., Van Baren, M.J., Salzberg, S.L., Wold, B.J., Pachter, L.: Transcript assembly and quantification by RNA-Seq reveals unannotated transcripts and isoform switching during cell differentiation. *Nature biotechnology* **28**(5), 511–515 (2010)

48. Magwene, P.M., Lizardi, P., Kim, J.: Reconstructing the temporal ordering of biological samples using microarray data. *Bioinformatics* **19**(7), 842–850 (2003). doi:10.1093/bioinformatics
49. Clustering on Transcript Compatibility Counts. Github repository (2016).
https://github.com/govinda-kamath/clustering_on_transcript_compatibility_counts
50. Lin, J.: Divergence measures based on the Shannon entropy. *Information Theory, IEEE Transactions on* **37**(1), 145–151 (1991)
51. Fuglede, B., Topsøe, F.: Jensen-Shannon divergence and Hilbert space embedding. In: *IEEE International Symposium on Information Theory*, pp. 31–31 (2004)
52. Batu, T., Fortnow, L., Rubinfeld, R., Smith, W.D., White, P.: Testing that distributions are close. In: *Foundations of Computer Science, 2000. Proceedings. 41st Annual Symposium On*, pp. 259–269 (2000). IEEE
53. Frey, B.J., Dueck, D.: Clustering by passing messages between data points. *science* **315**(5814), 972–976 (2007)
54. Van der Maaten, L., Hinton, G.: Visualizing data using t-SNE. *Journal of Machine Learning Research* **9**(2579-2605), 85 (2008)
55. Mühlbacher, P.: A python implementation of the diffusion maps algorithm introduced by Lafon. *GitHub* (2015)
56. Lafon, S.S.: Diffusion maps and geometric harmonics. PhD thesis, Yale University (2004)

Figures

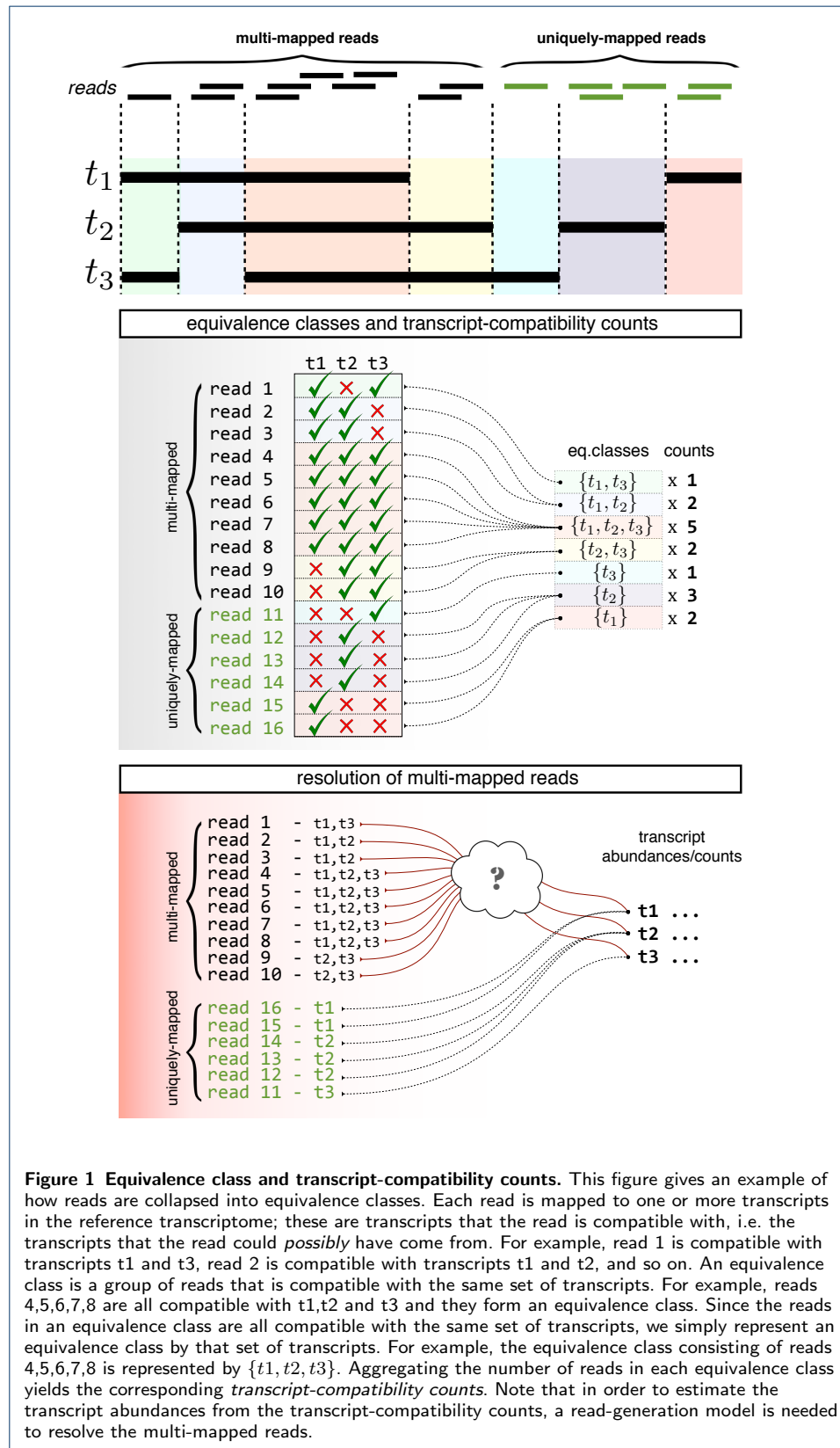
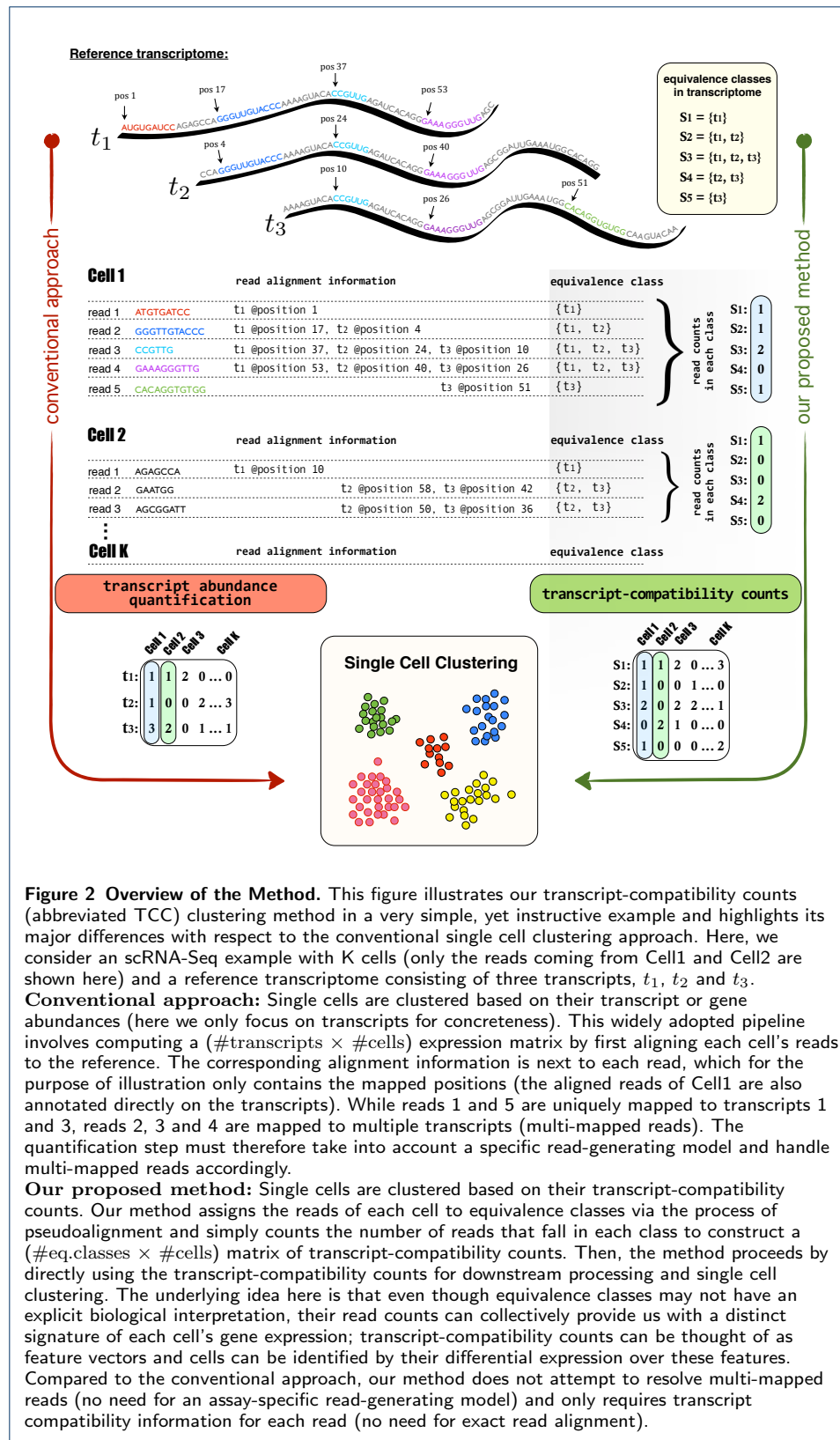


Figure 1 Equivalence class and transcript-compatibility counts. This figure gives an example of how reads are collapsed into equivalence classes. Each read is mapped to one or more transcripts in the reference transcriptome; these are transcripts that the read is compatible with, i.e. the transcripts that the read could *possibly* have come from. For example, read 1 is compatible with transcripts t_1 and t_3 , read 2 is compatible with transcripts t_1 and t_2 , and so on. An equivalence class is a group of reads that is compatible with the same set of transcripts. For example, reads 4,5,6,7,8 are all compatible with t_1, t_2 and t_3 and they form an equivalence class. Since the reads in an equivalence class are all compatible with the same set of transcripts, we simply represent an equivalence class by that set of transcripts. For example, the equivalence class consisting of reads 4,5,6,7,8 is represented by $\{t_1, t_2, t_3\}$. Aggregating the number of reads in each equivalence class yields the corresponding *transcript-compatibility counts*. Note that in order to estimate the transcript abundances from the transcript-compatibility counts, a read-generation model is needed to resolve the multi-mapped reads.



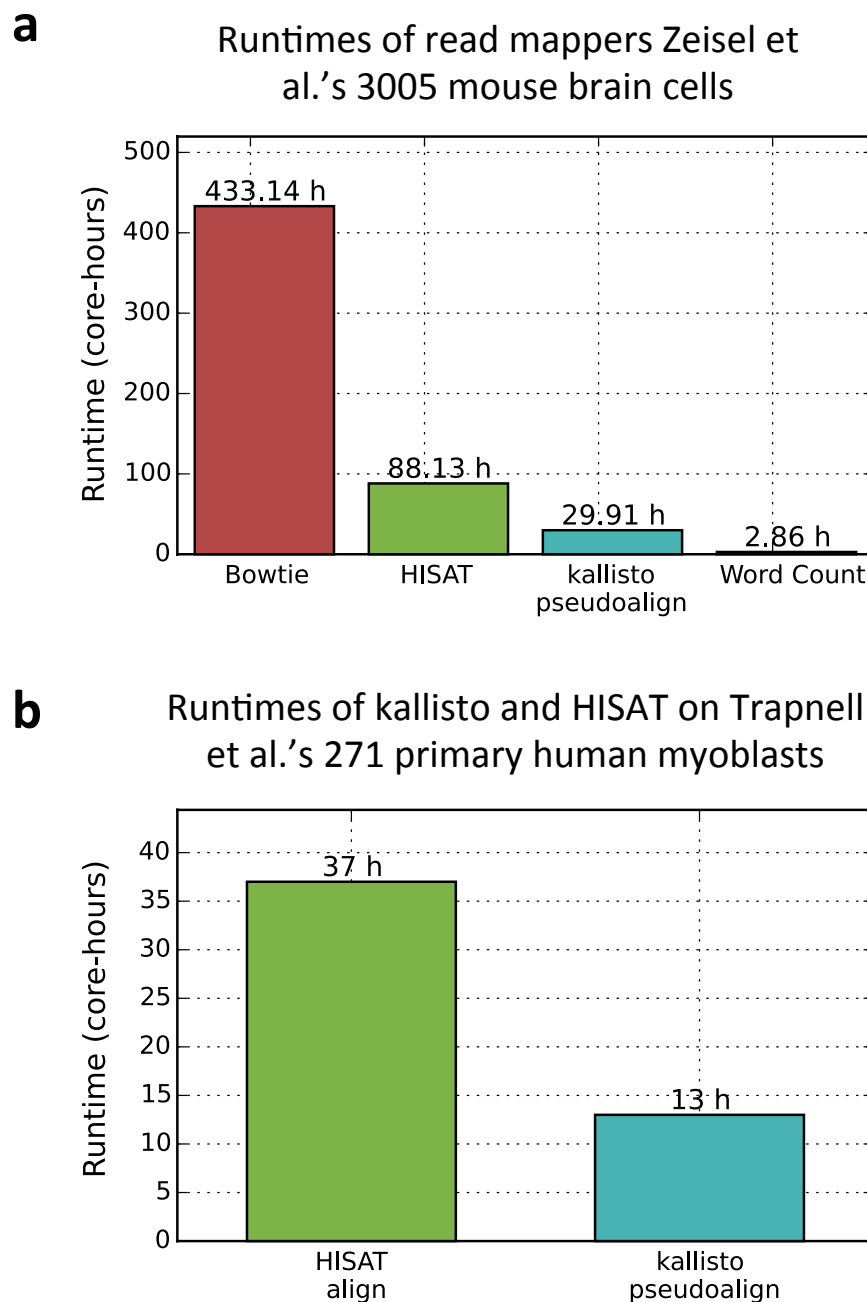
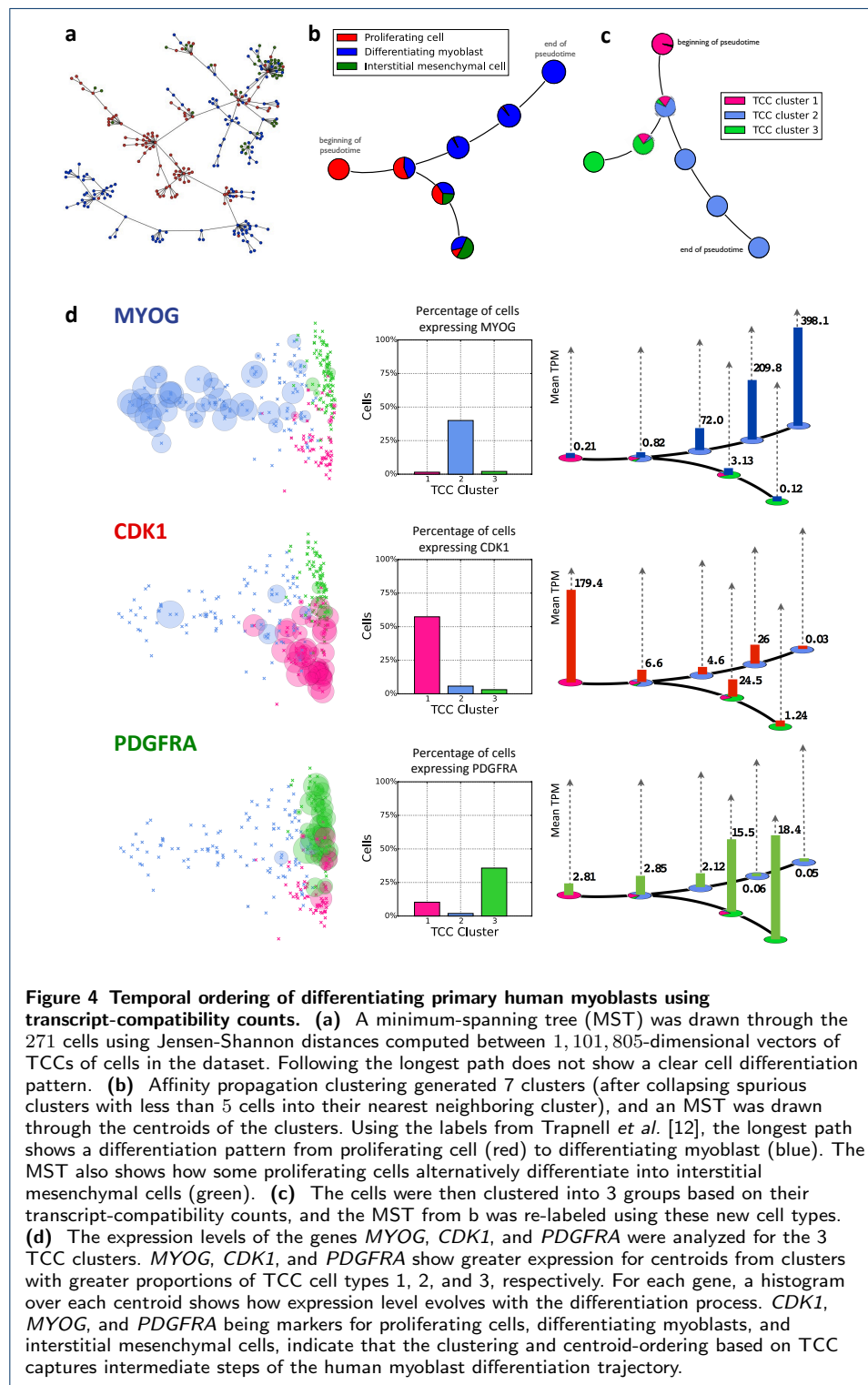


Figure 3 Runtime comparison of alignment methods. (a) The time required to process 3005 cells from mouse brain cell dataset [7] in core hours is shown here. The time taken for read alignment with Bowtie and HISAT is much larger than the time taken for kallisto pseudoalignment (which is used by our method to obtain the transcript-compatibility counts). kallisto pseudoalignment and HISAT were run on 32 cores. Bowtie and word count were each timed on 1 core with 10 randomly selected cells. The bars shown here are estimates obtained by multiplying these times by 300.5. Because we do not account for the overhead associated with parallelizing, the Bowtie and word count estimates are lower bounds on their run times in practice. After preprocessing the UMIs, each of the 5,914,602,849 single-end reads in the dataset were less than 50 bp long. (b) The time required to process 271 cells of the dataset of [12] in core hours is shown here. As before, the time taken for read alignment with HISAT is significantly larger than the time taken for kallisto pseudoalignment. Both methods were run on 32 cores. The dataset has 814,344,693 paired-end reads, and each mate in a pair is 100 bp long.



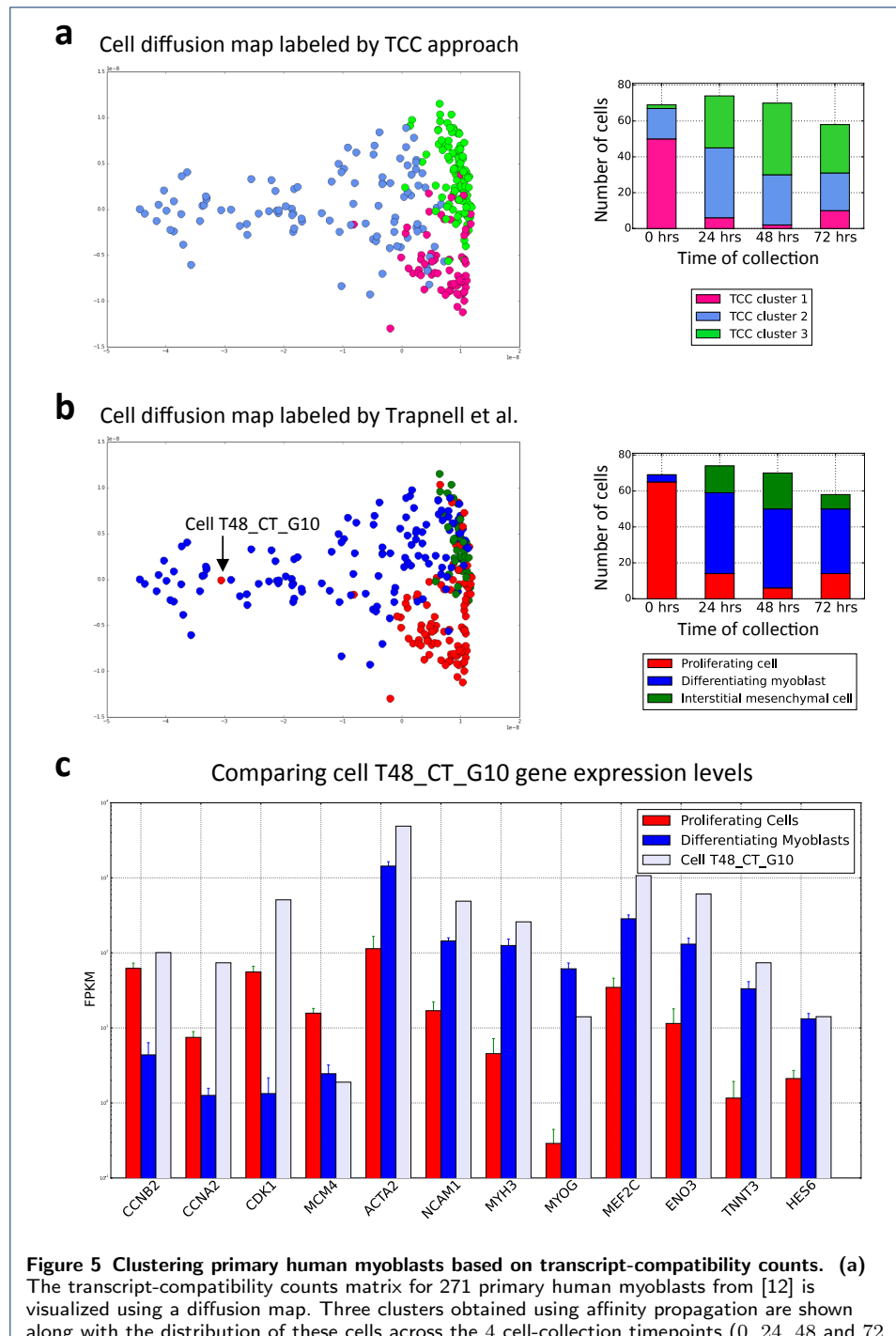
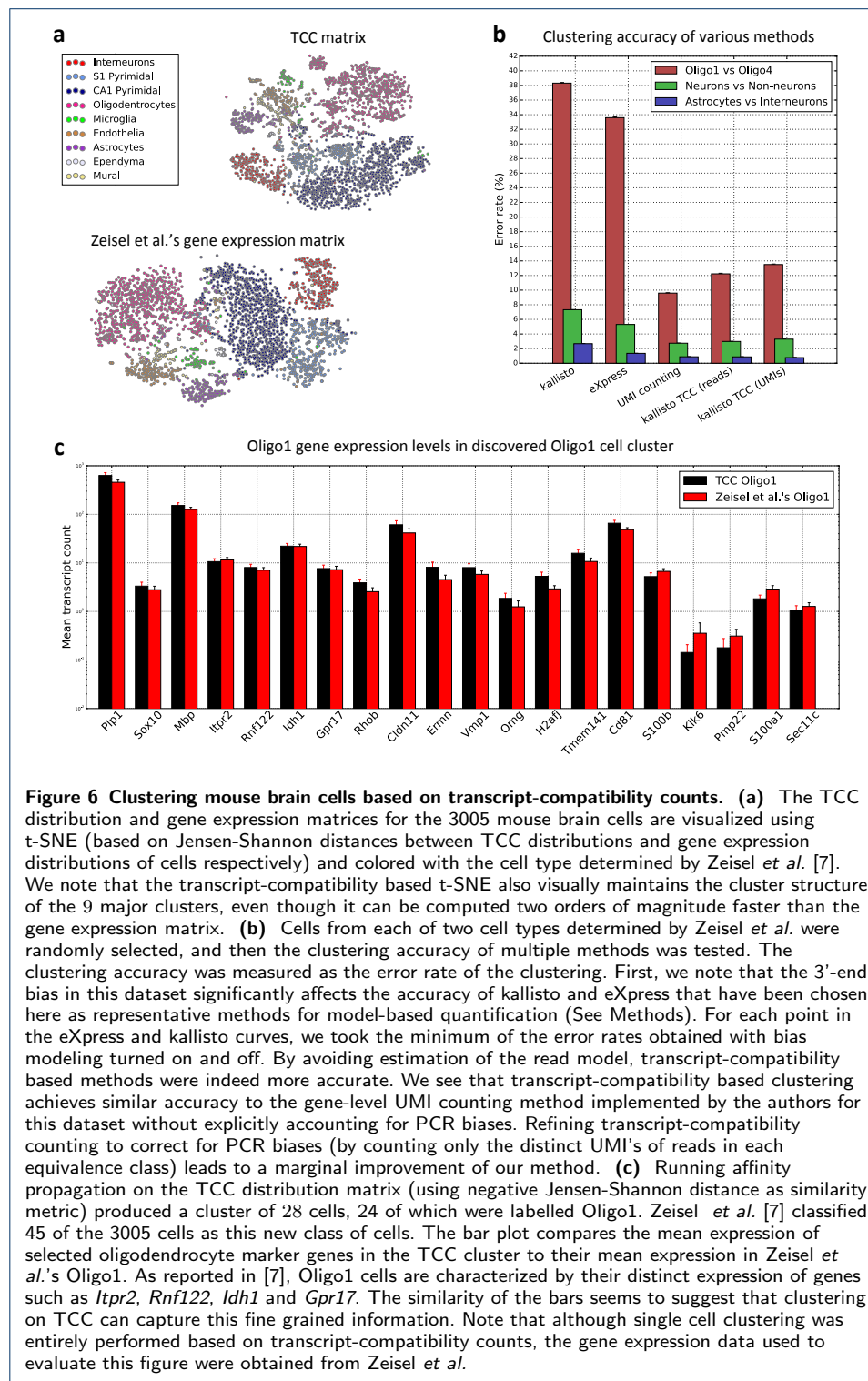
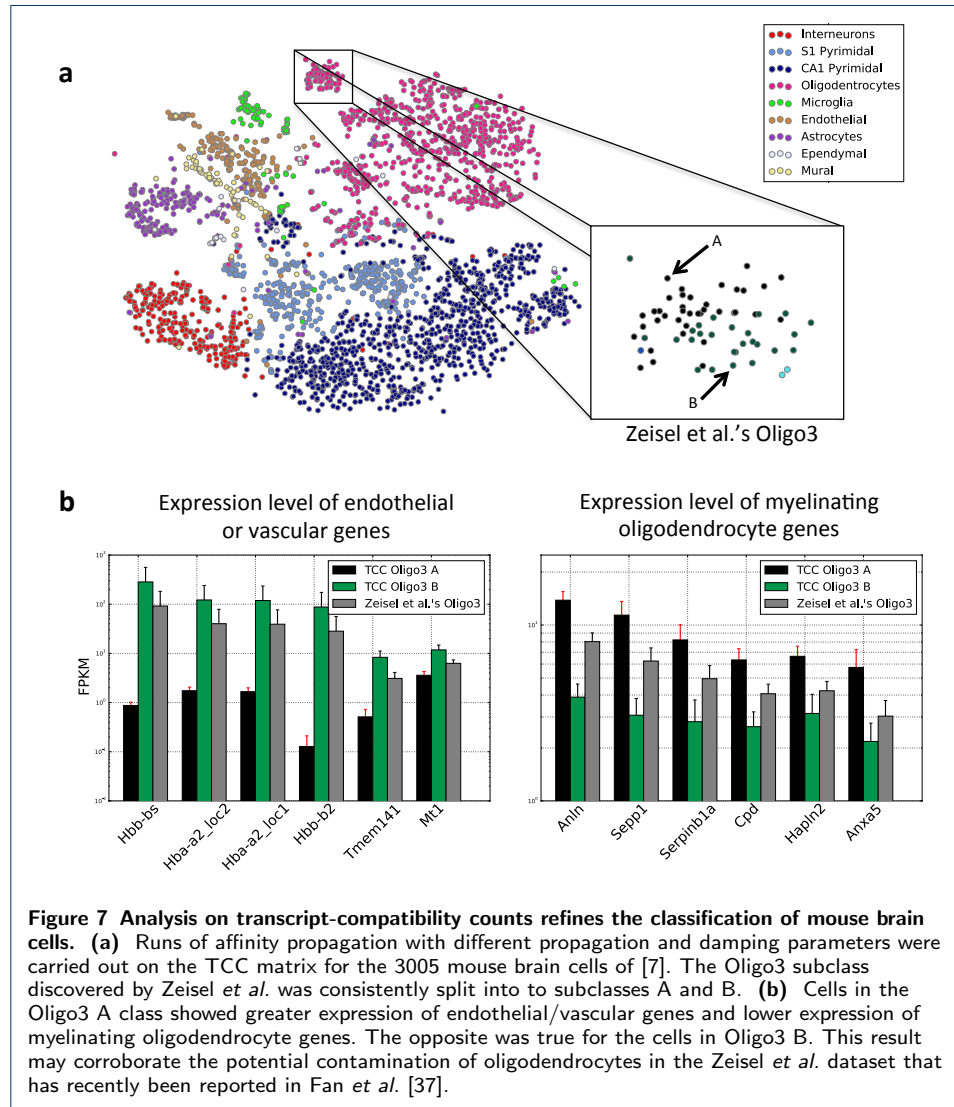
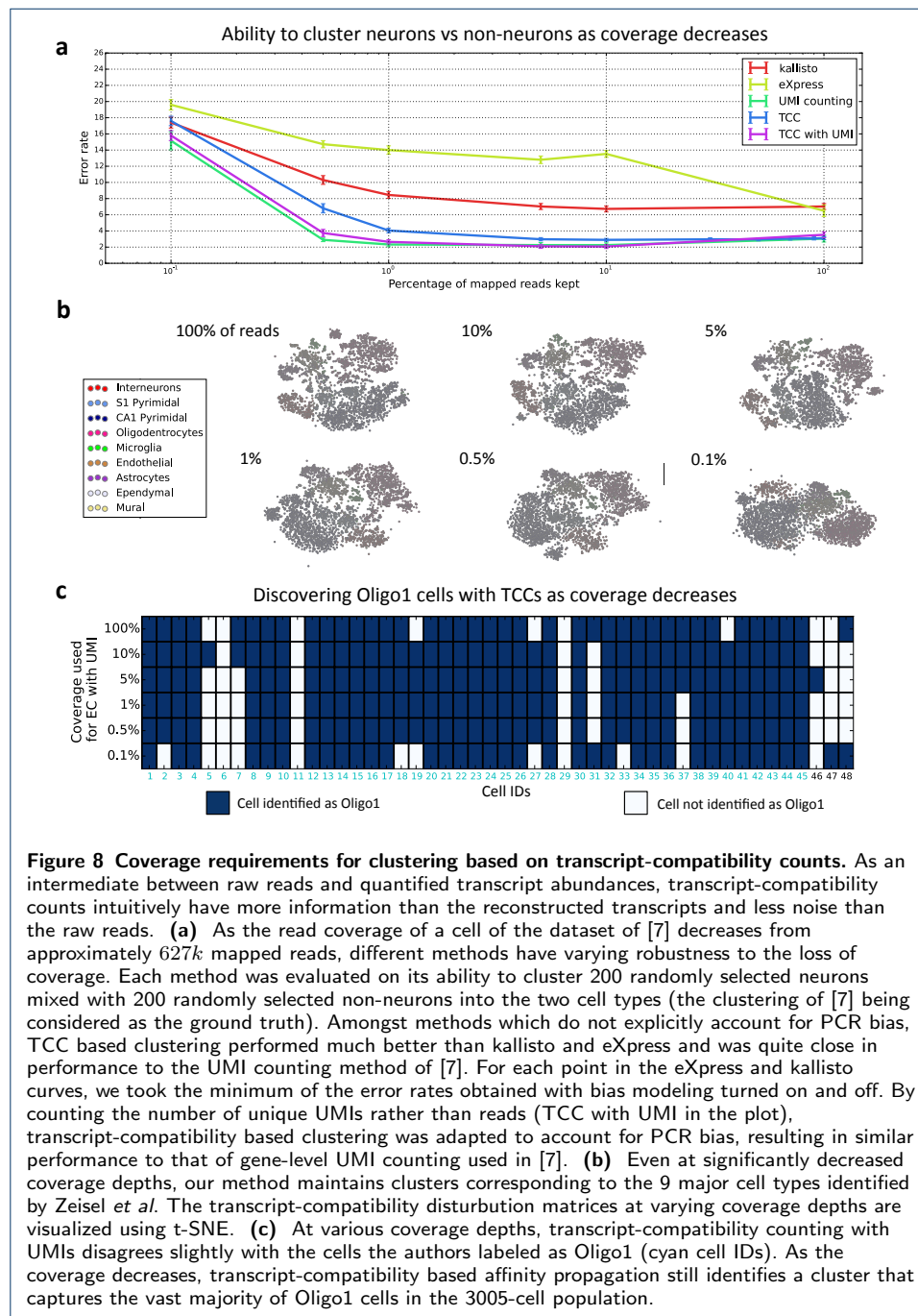


Figure 5 Clustering primary human myoblasts based on transcript-compatibility counts. (a) The transcript-compatibility counts matrix for 271 primary human myoblasts from [12] is visualized using a diffusion map. Three clusters obtained using affinity propagation are shown along with the distribution of these cells across the 4 cell-collection timepoints (0, 24, 48 and 72 hours). (b) The diffusion map obtained using transcript compatibility counts is relabeled using the cells reported by [12]. Clusters 1, 2, 3 generated by the transcript compatibility based method map to proliferating cells, differentiating myoblasts, and interstitial cells respectively. According to Trapnell *et al.*'s labels, the transcript compatibility based method seems to have severely misclassified cell T48_CT_G10 (SRR1033183) as a differentiating myoblast. (c) Comparing the expressions of 12 differentiating genes in T48_CT_G10 with those of the average proliferating cell and the average differentiating myoblast, 8 out of the 12 genes show expressions similar to what one would expect from a differentiating myoblast. *MYOG* seems to show an FPKM of 14, which while more than the mean expression of proliferating cells (around 0.28) is much less than the mean expression of differentiating myoblasts (around 61.33). We note that this cell has the highest expression of *MYOG* among all cells labelled by Trapnell *et al.* as proliferating cell (and the second highest cell has expression around 5.4). However there are 88 differentiating myoblasts with *MYOG* expression less than 15 FPKM. Hence it is reasonable to think that this *MYOG* expression is more typical of differentiating myoblasts than proliferating cells. Only genes *CDK1* and *CCNB2* show expressions close to what one would expect from a proliferating cell. Even though *CDK1* is a highly specific marker for proliferating cells, the above gene profile indicates that classifying cell T48_CT_G10 as a differentiating myoblast seems reasonable.

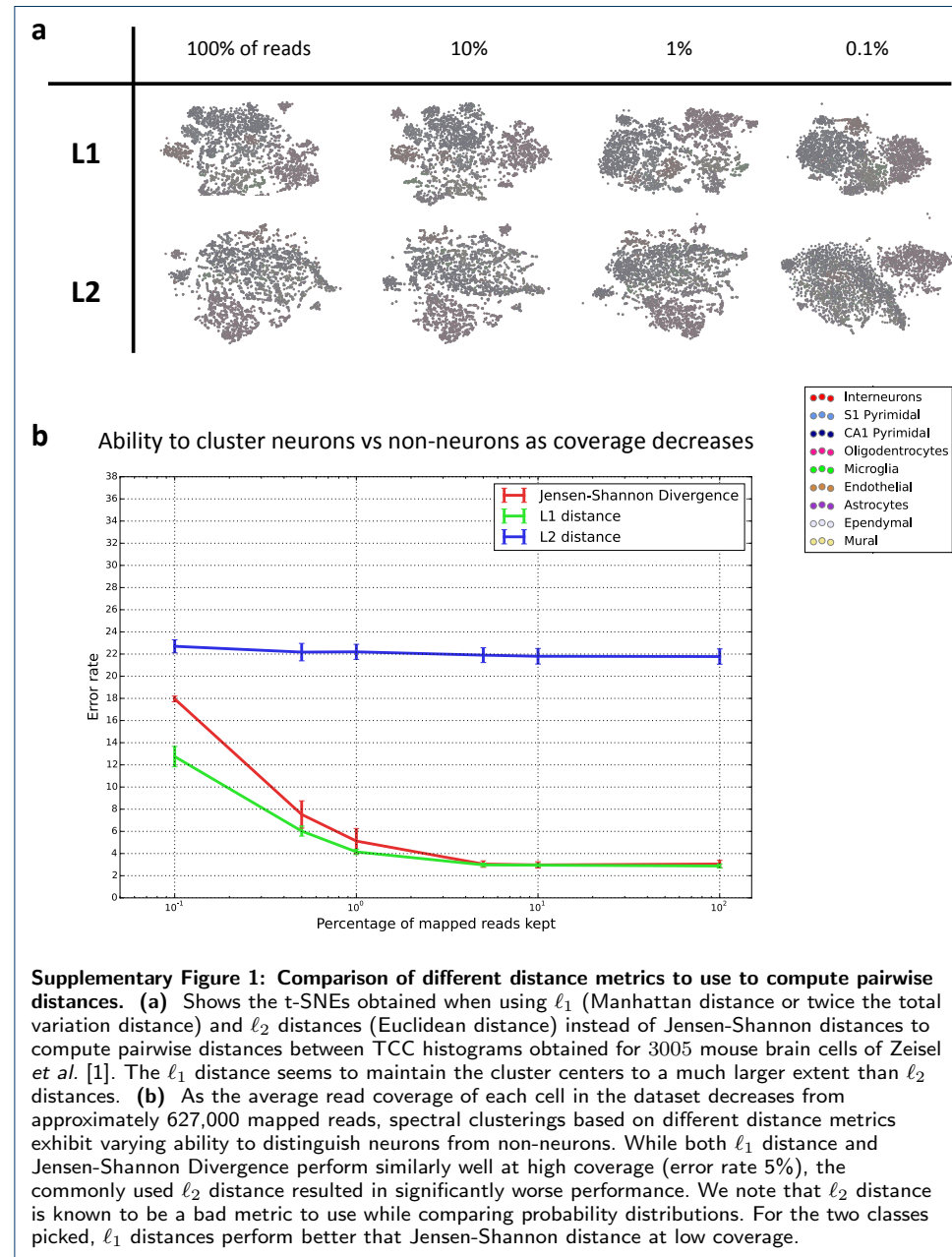


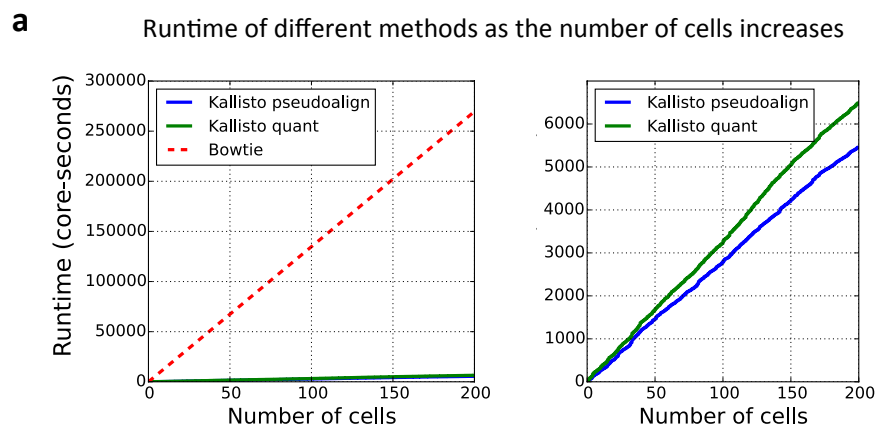




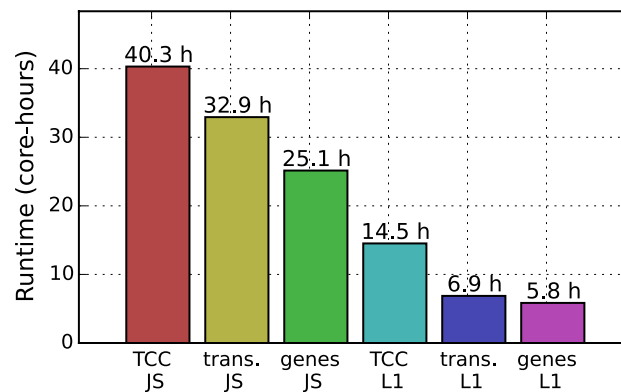
Supplementary Figures for

“Fast and accurate single-cell RNA-Seq analysis by clustering of transcript-compatibility counts”



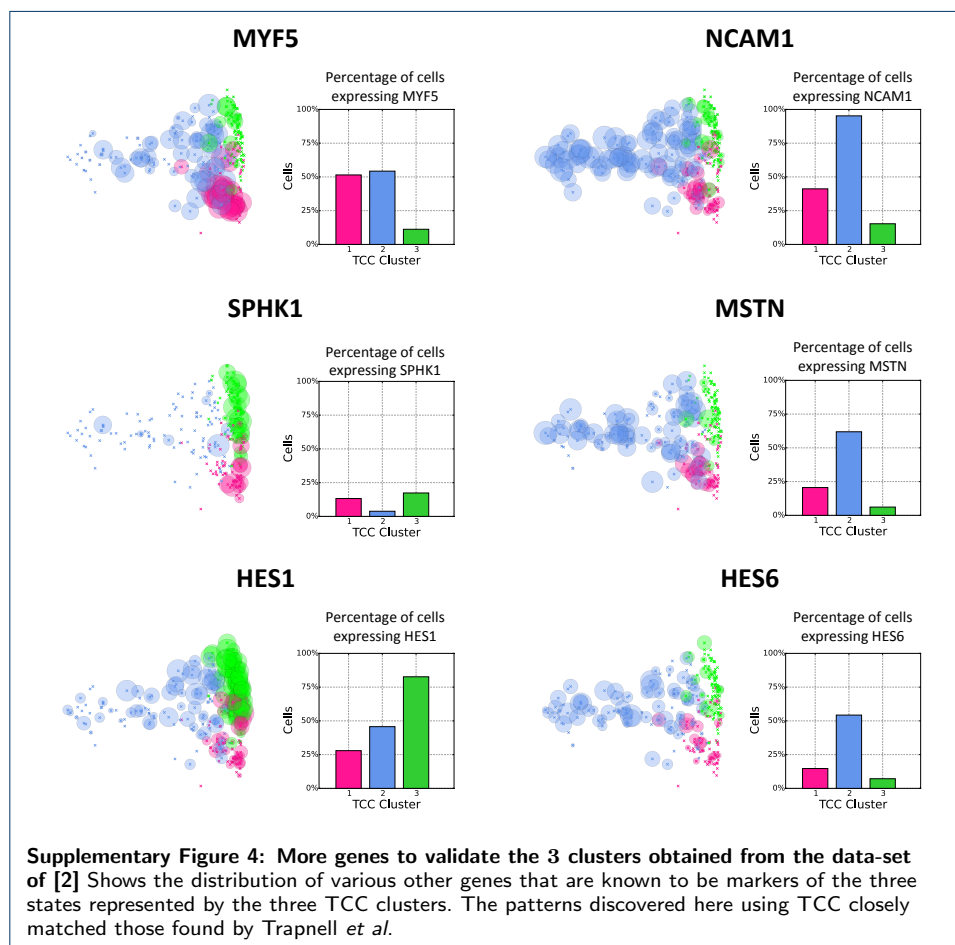
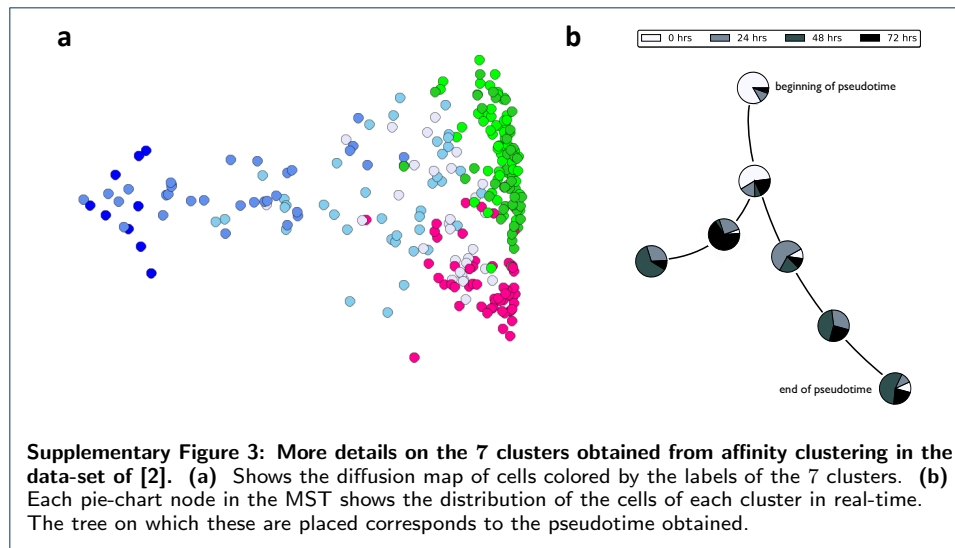


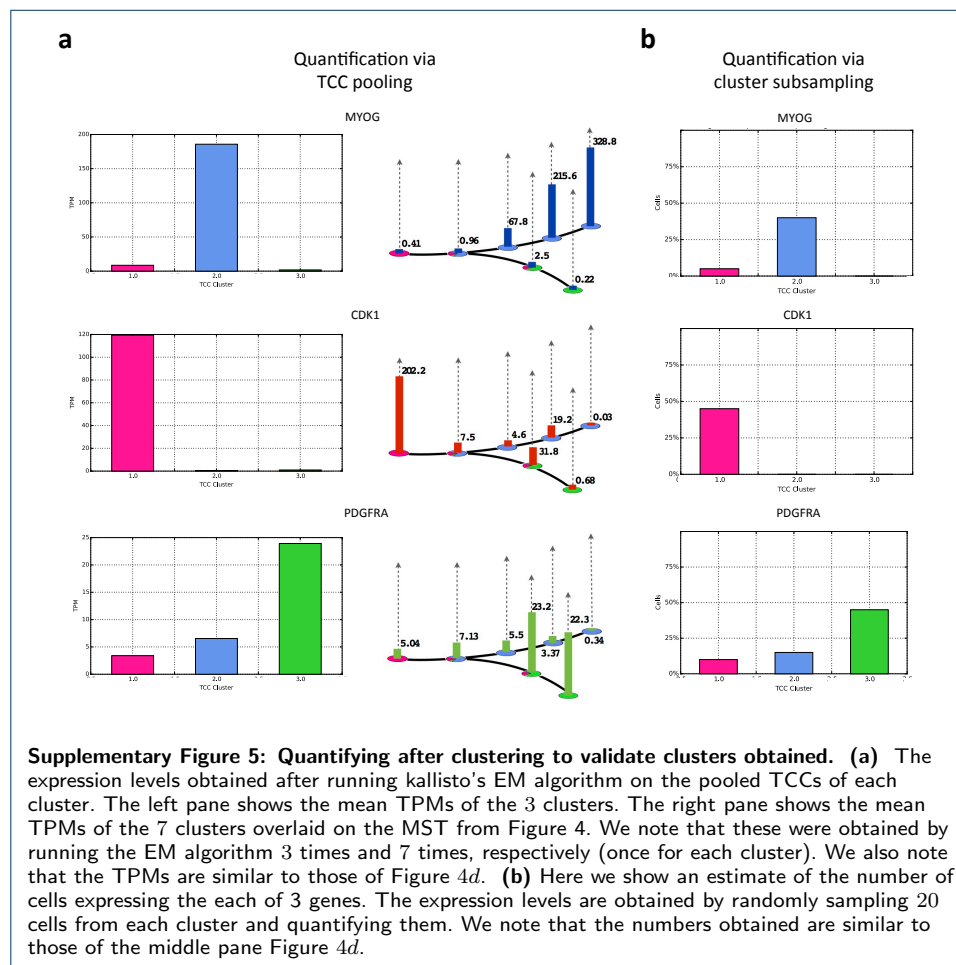
b Runtime of getting pairwise distance matrices

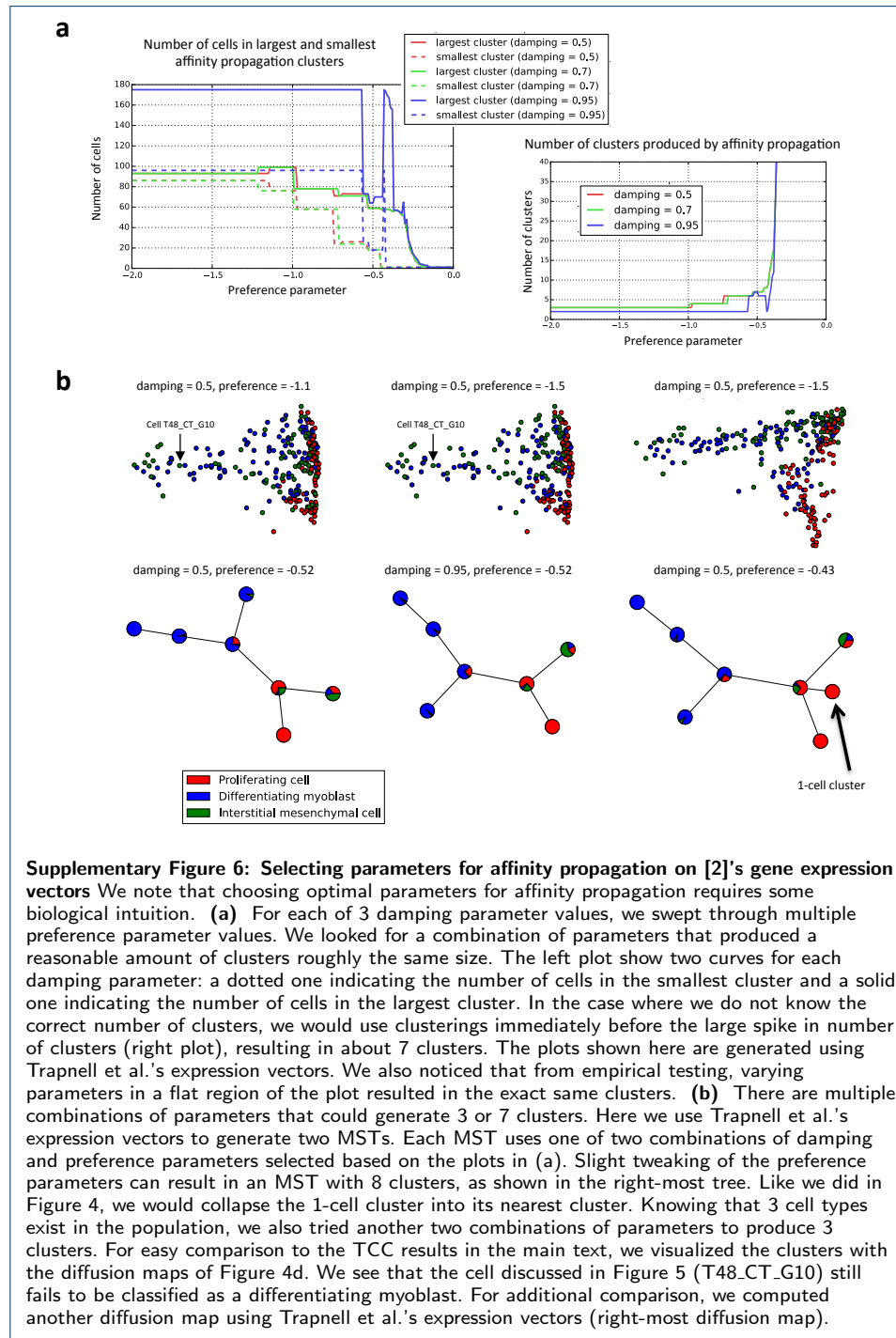


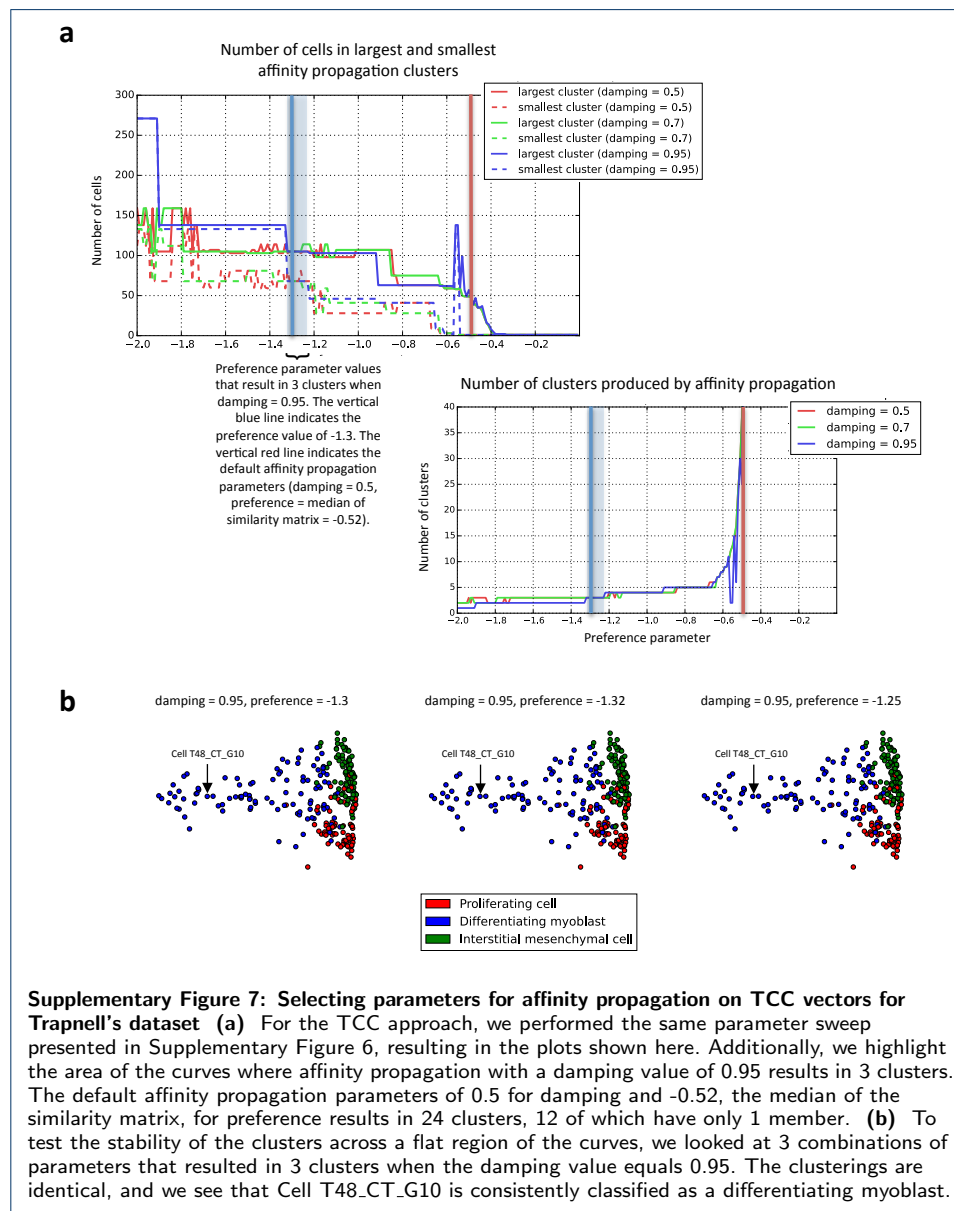
	TCC	transcripts	genes
Feature dimension	246981	82741	28250
Average # of non-zero entries	11804	8655	6747

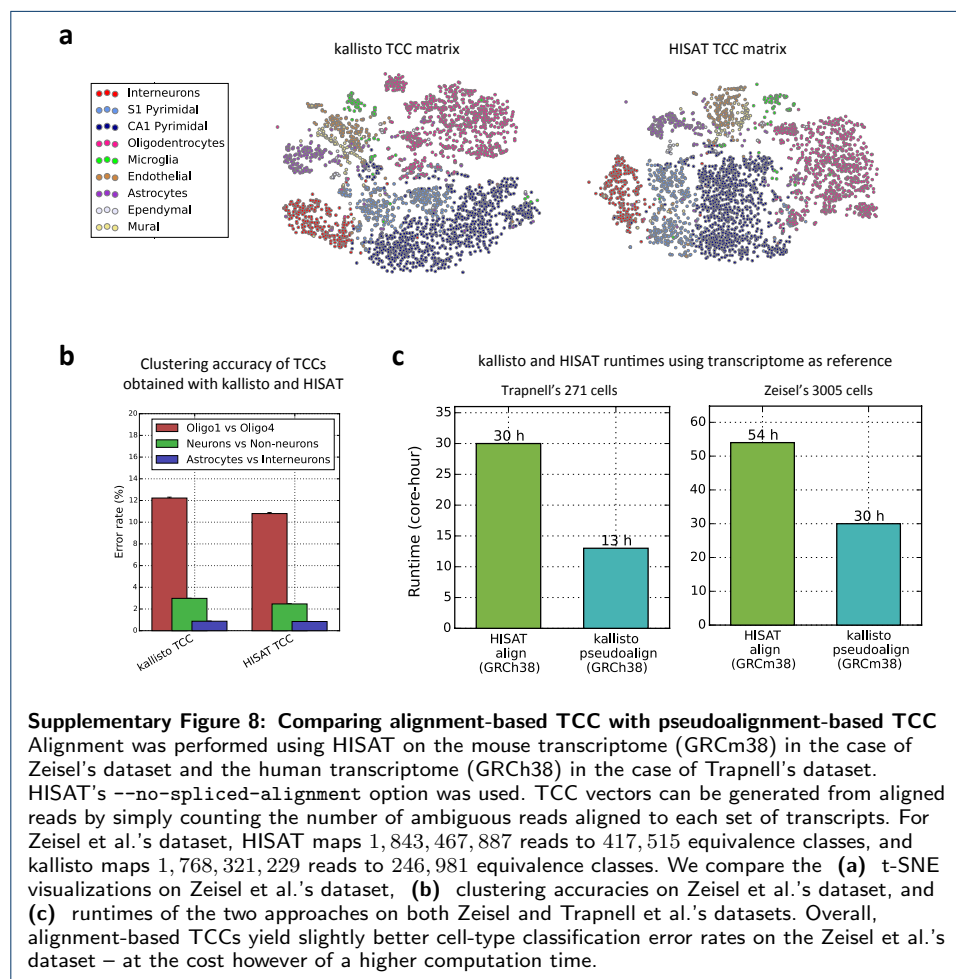
Supplementary Figure 2: Runtimes of bowtie, kallisto-quant, kallisto-pseudoalign, and computation of pairwise distance matrices. (a) The runtimes of Bowtie, kallisto with both pseudoalignment and quantification (kallisto-quant), and kallisto with just pseudoalignment (kallisto-pseudoalign) were obtained for 200 randomly selected cells from Zeisel *et al.*'s 3005 mouse brain cell dataset [1] as shown on the left pane. The (extrapolated) runtime of Bowtie was higher than the runtimes of the two pseudoalignment-based methods. When comparing kallisto-quant against kallisto-pseudoalign (as shown on the right pane), kallisto-pseudoalign is slightly faster, saving approximately 5 seconds per cell. As the number of cells scales up to 44,000 for novel sequencing technologies such as DropSeq, kallisto-pseudoalign will have savings of about 60 hours compared to kallisto-quant and 1.8 years compared to bowtie. (b) The runtimes obtained for running pairwise distances on the distributions obtained from TCCs, transcriptome expressions, and gene counting are shown here. These times are shown for Jensen-Shannon distance and ℓ_1 distances. The feature dimension indicated in the table equals the number of features (either TCC, transcript abundances, or gene abundances) that are non-zero in at least one of the 3005 samples.











References

1. Zeisel, A., Muñoz-Manchado, A.B., Codeluppi, S., Lönnerberg, P., La Manno, G., Jurèus, A., Marques, S., Munguba, H., He, L., Betsholtz, C., Rolny, C., Castelo-Branco, G., Hjerling-Leffler, J., Linnarsson, S.: Cell types in the mouse cortex and hippocampus revealed by single-cell RNA-seq. *Science* **347**(6226), 1138–1142 (2015). doi:10.1126/science.aaa1934. <http://www.sciencemag.org/content/347/6226/1138.full.pdf>
2. Trapnell, C., Cacchiarelli, D., Grimsby, J., Pokharel, P., Li, S., Morse, M., Lennon, N.J., Livak, K.J., Mikkelsen, T.S., Rinn, J.L.: The dynamics and regulators of cell fate decisions are revealed by pseudotemporal ordering of single cells. *Nat Biotech* **32**(4), 381–386 (2014). doi:10.1038/nbt.2859