

Automated hippocampal unfolding for morphometry and subfield segmentation with HippUnfold

Jordan DeKraker^{1,2}, Roy AM Haast^{1,3}, Mohamed D Yousif¹, Bradley Karat¹, Jonathan C Lau^{1,4,5}, Stefan Köhler^{2,6}, Ali R Khan^{1,2,5,7}

¹Robarts Research Institute, Schulich School of Medicine and Dentistry, University of Western Ontario, Canada

²Brain and Mind Institute, University of Western Ontario, Canada

³CRMBM, CNRS UMR 7339, Aix-Marseille University, Marseille, France

⁴Dept of Clinical Neurological Sciences, Division of Neurosurgery, Schulich School of Medicine & Dentistry, University of Western Ontario, Canada

⁵School of Biomedical Engineering, University of Western Ontario, Canada

⁶Dept of Psychology, University of Western Ontario, Canada

⁷Dept of Medical Biophysics, University of Western Ontario, Canada

Corresponding author: Jordan DeKraker (jordan.dekraker@mail.mcgill.ca), Ali Khan (alik@robarts.ca)

Key words: hippocampal subfields, MRI, morphology, deep learning, neuroimaging software

Abstract

Like neocortical structures, the archicortical hippocampus differs in its folding patterns across individuals. Here, we present an automated and robust BIDS-App, HippUnfold, for defining and indexing individual-specific hippocampal folding in MRI, analogous to popular tools used in neocortical reconstruction. Such tailoring is critical for inter-individual alignment, with topology serving as the basis for homology. This topological framework enables qualitatively new analyses of morphological and laminar structure in the hippocampus or its subfields. It is critical for refining current neuroimaging analyses at a meso- as well as micro-scale. HippUnfold uses state-of-the-art deep learning combined with previously developed topological constraints to generate uniquely folded surfaces to fit a given subject's hippocampal conformation. It is designed to work with commonly employed sub-millimetric MRI acquisitions, with possible extension to microscopic resolution. In this paper we describe the power of HippUnfold in feature extraction, and highlight its unique value compared to several extant hippocampal subfield analysis methods.

Introduction

Most neurological or psychiatric diseases with widespread effects on the brain show strong and early impact on the hippocampus (e.g. [1]). This highly plastic grey matter (GM) structure is also critical in the fast formation of episodic and spatial memories (e.g. [2]). Examination of this structure with non-invasive neuroimaging, such as MRI, provides great

promise for furthering our understanding, diagnosis, and subtyping of these diseases and cognitive processes in the hippocampus and its component subfields [3].

In current neuroimaging analyses the hippocampus is typically modelled as a subcortical volume, but it is actually made up of a folded archicortical mantle, or ‘ribbon’ [4]. Representing the hippocampus as such can be leveraged to enable qualitatively new analyses, such as registration, despite inter-individual differences in gyrification or folding structure, through topological alignment. In previous work, this was shown to account for much inter-individual variability in MRI-based manual subfield segmentations [5]. Additionally, representation as a ribbon allows the hippocampus to be factorized into surface area and thickness, which can be further subdivided for laminar analyses. These methods are thus critical in advancing MRI research from the macroscopic scale to the subfield, cortical column, and laminar scales. Similar approaches have already yielded advances in neocortical analysis methods [6,7].

Denoting the hippocampal archicortical ribbon is challenging because it is thin (0.5-2mm), its folding pattern varies considerably between individuals [8,9], and this folding may even continue to change from early development through adulthood [10]. We present here a set of tools to overcome these challenges using a highly sensitive and generalizable ‘U-Net’ deep learning architecture [11], combined with previous work that enforces topological constraints on hippocampal tissue [12].

In previous work [12], we developed a method to computationally unfold the hippocampus along its geodesic anterior-posterior (AP) and proximal-distal (PD, i.e., proximal to the neocortex, with the dentate gyrus being most distal) axes. We demonstrated for the first time several qualitative properties using in vivo MRI, such as the contiguity of all subfields along the curvature of the hippocampal head (anterior) and tail (posterior), previously described only in histology. This pioneering work relied heavily on detailed manual tissue segmentations including the high-myelinated stratum radiatum, lacunosum, and moleculare (SRLM), a commonly used landmark that separates hippocampal folds along the inward ‘curl’ of the hippocampus. In this work we also considered curvature and digitations along the AP axis of the hippocampus, most prominently occurring in the hippocampal head [4,8,9,12]. Each of these features are highly variable between individuals, making them difficult to capture using automated volumetric atlas-based methods and time-consuming to detect manually.

The current work automates the detailed tissue segmentation required for hippocampal unfolding using a state-of-the-art ‘U-Net’ deep convolutional neural network [11]. In particular, we aimed to capture morphological variability between hippocampi at the level of digitations or gyrifications which are not typically considered using existing automated methods which employ either a single atlas or multi-atlas fusion (e.g. [13–15]). U-Net architectures have been shown to be generalizable and sensitive to anatomical variations in many medical image processing tasks [16], making them ideal to overcome this challenge.

Estimating hippocampal subfield boundaries in MRI is challenging since their histological hallmarks are not directly available in MRI due to lower spatial resolution and lack of appropriate contrasts, which is an ongoing hurdle in neuroimaging [17,18]. However, post-mortem studies show that the subfields are topologically constrained according to their differentiation from a common flat cortical mantle [4]. Thus a folded representation of hippocampal tissue provides a powerful intermediate between a raw MRI and subfield labels [19], analogous to the reconstruction of a 3D neocortical surface. This surface can then be parcellated into subregions

without topological breaks [6], overcoming many limitations of current subfield segmentation methods [18]. Here, we apply surface-based subfield boundary definitions obtained via manual segmentation of BigBrain 3D histology [20] which was additionally supported by a data-driven parcellation [21]. We additionally demonstrate how labels used in the popular Freesurfer (FS7) [22] and Automatic Segmentation of Hippocampal Subfields (ASHS) [13] software packages can be applied under our topologically-constrained framework.

Altogether, we combine novel U-Net tissue classification, previously developed hippocampal unfolding [12], and topologically-constrained subfield labelling [21] together into a single pipeline which we refer to as ‘HippUnfold’ hereinafter. We designed this pipeline to employ FAIR principles (findability, accessibility, interoperability, reusability) with support across a wide range of use-cases centered around sub-millimetric MRI.

Results

HippUnfold aligns and visualizes data on folded or unfolded surfaces

HippUnfold is presented here as a fully-automated pipeline with outputs including hippocampal tissue and subfield segmentations, geodesic Laplace coordinates spanning over hippocampal GM voxels, and inner, midthickness and outer hippocampal surfaces. These surfaces have corresponding vertices, providing an implicit topological registration between individuals.

The overall pipeline for HippUnfold is illustrated briefly in Figure 1. A comprehensive breakdown of each step is provided in the Materials and Methods.

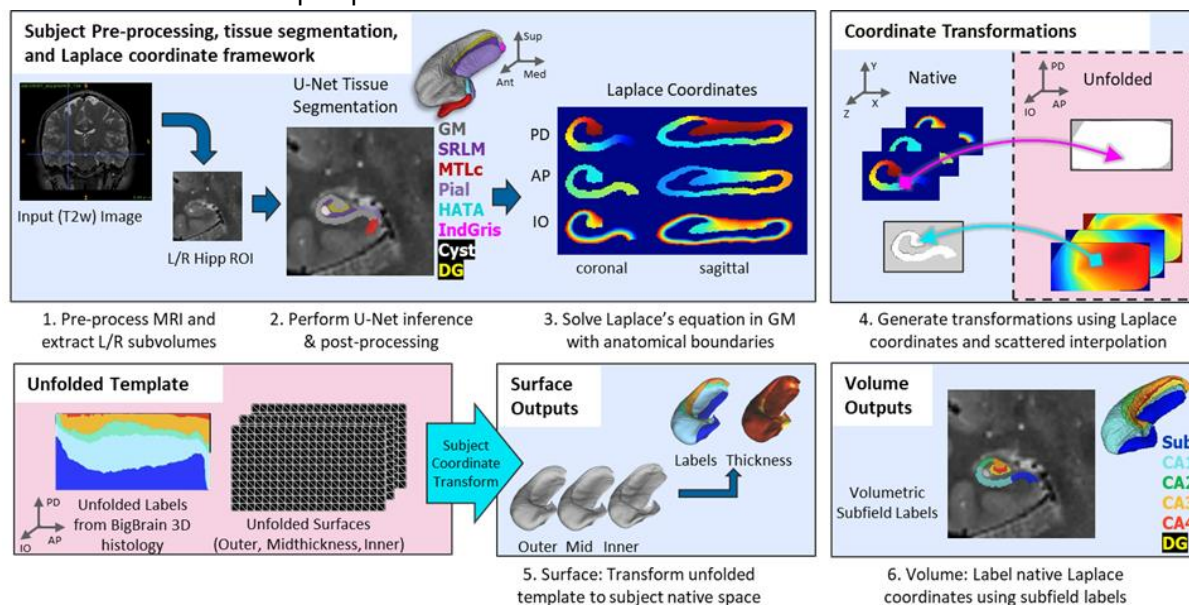


Figure 1. Overview of HippUnfold pipeline. First, input MRI images are preprocessed and cropped around the left and right hippocampi. Second, a U-Net neural network architecture (nnUNet [11]) is used to segment hippocampal grey matter (GM), the high-myelinated stratum radiatum, lacunosum, and molecular (SRLM), and structures surrounding the hippocampus. Segmentations are post-processed via template shape injection. Third, Laplace's equation is solved across the anterior-posterior (AP), proximal-

distal (PD) and inner-outer (IO) extent of hippocampal GM, making up a geodesic coordinate framework. Fourth, scattered interpolants are used to determine equivalent coordinates between native Cartesian space and unfolded space. Fifth, unfolded surfaces with template subfield labels [21] are transformed to subjects' native folded hippocampal configurations. Morphological features (e.g. thickness) are extracted using Connectome Workbench [23] on these folded native space surfaces. Sixth, volumetric subfields are generated by filling the voxels between inner and outer surfaces with the corresponding subfield labels. Additional details on this pipeline can be found in the Materials and Methods.

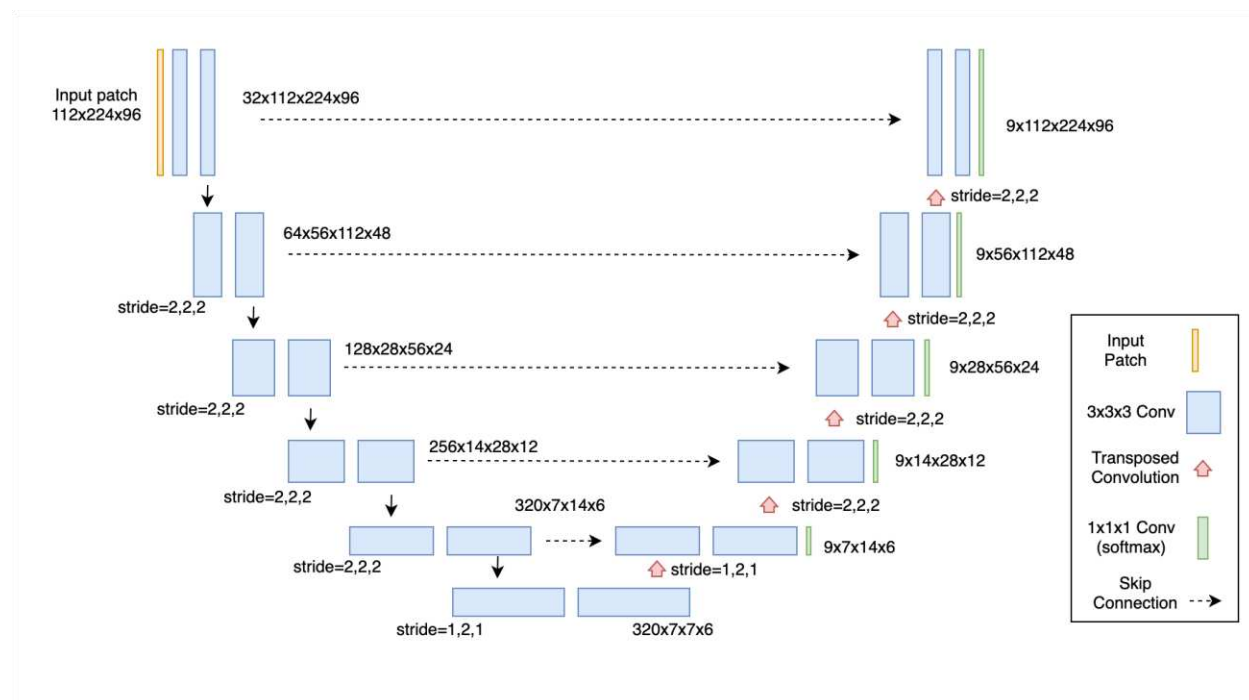


Figure 1 - figure supplement 1. Diagram of the nnU-net architecture used for HippUnfold. This architecture was automatically configured as the 3D_fullres network, using the 128x256x128 (0.3x0.3x0.3mm) hippocampal subregion images as training data. All conv3D blocks have stride=1,1,1 (unless otherwise specified), padding=(1,1,1), instance normalization, and leaky ReLu activation functions (negative slope=0.01). Output layers for the 9-label (including background) tissue segmentation are present at 5 feature-map resolutions (deep supervision), and the loss function used for training is an average of a Dice and cross-entropy loss functions. For full details on the training scheme, we refer readers to the supplementary material provided in [7].

In addition to subfield segmentation, HippUnfold extracts morphological features and can be used to sample quantitative MRI data along a midthickness surface to minimize partial voluming with surrounding structures (see Materials and Methods section "HippUnfold detailed pipeline" for details). This is visualized across n=148 test subjects on an unfolded surface and group-averaged folded surface in Figure 2. Note that the group averaging takes place on a surface and so does not break individual subjects' topologies. Quantitative MRI features examined here include T1w/T2w ratio as a proxy measure for intracortical myelin [24], mean diffusivity, and fractional anisotropy [25,26].

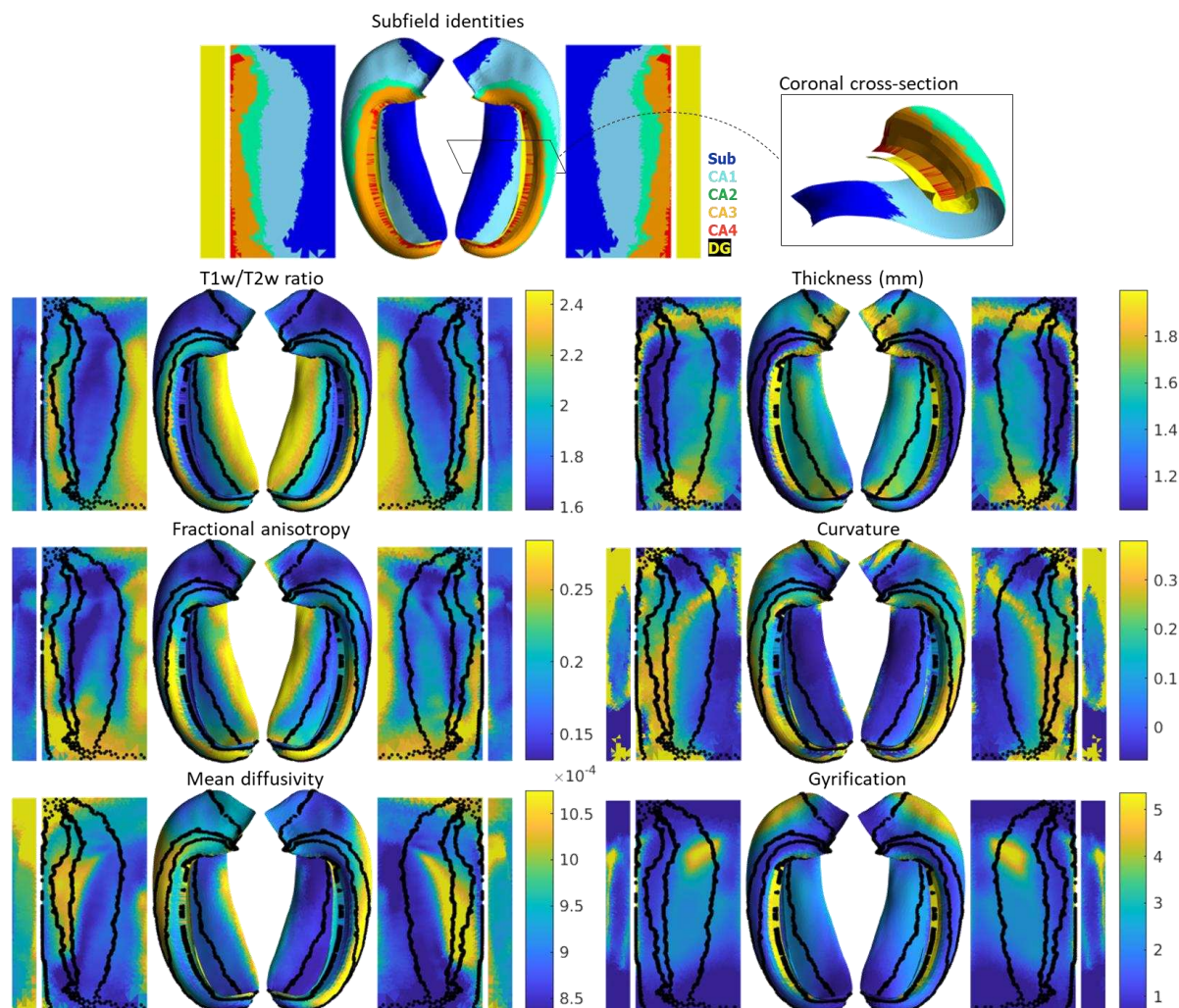


Figure 2. Average hippocampal folded and unfolded surfaces showing subfields, morphometric and quantitative MRI measures from the HCP-YA test dataset (see Table 1 of Materials and Methods). The same topologically defined subfields were applied in unfolded space to all subjects (top), which are also overlaid on quantitative MRI plots (black lines). The dentate gyrus (DG) is represented as a distinct surface, reflecting its unique topology, and is mostly occluded in native space. Thickness was not measured across the dentate gyrus surface. Note that many morphological and quantitative MRI measures show clear distinctions across subfield boundaries.

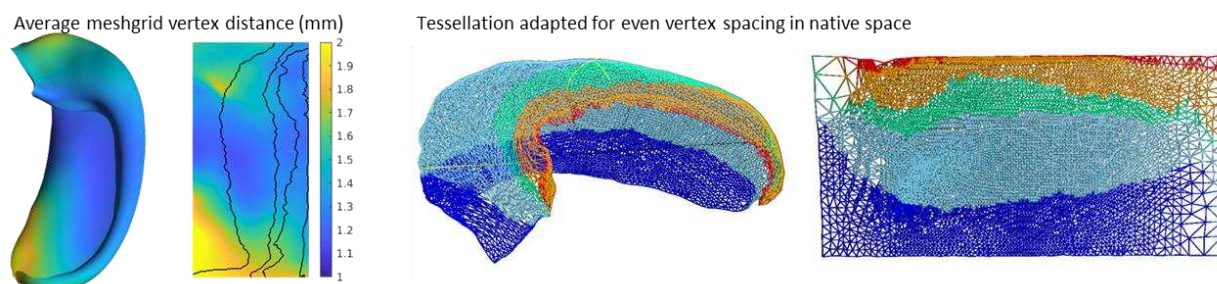


Figure 2 - figure supplement 1. Examination of distortions (or difference in vertex spacing) between an average folded and unfolded space. Distortions were greatest in the tail of the hippocampus where its proximal-distal distance becomes quite narrow.

Clear differences in morphological and quantitative MRI features can be seen across the hippocampus, particularly across subfields as defined here from a histologically-derived unfolded reference atlas (3D BigBrain) [21]. This highlights the advantages of the present method. These folded and unfolded representations of hippocampal characteristics are broadly in line with previous work examining differences in such morphological and quantitative MRI features across hippocampal subfields or along the hippocampal AP extent (e.g. [27,28]). However, in previous work these features differed between predefined subfields on average, but did not necessarily follow subfield contours as seen here. Some advantages of the current pipeline that likely contribute to this clarity include i) the detail of the hippocampal GM segmentation, ii) sampling along a midthickness surface to minimize partial voluming with surrounding structures, and iii) the fact that subjects are topologically aligned across digitations or gyri, leading to less blurring of features after group-averaging.

Extant methods do not respect the topological continuity of hippocampal subfields

Several automatic methods for labelling hippocampal subfields in MRI exist, of which Freesurfer v7.2.0 (FS7) [22] and Automatic Segmentation of Hippocampal Subfields [13] (ASHS) are among the most widely adopted. These methods rely on volumetric registrations between a target hippocampus and a reference or atlas. Specifically, ASHS makes use of multi-atlas registration, wherein multiple gold standard manual hippocampal subfield segmentations are registered to a target sample. Typically the multi-atlas consists of roughly a dozen samples which are then fused together to generate a reliable yet oftentimes smooth or simplified final product. FS uses a combination of voxel-wise classification and, bijectively, volumetric registration between a target hippocampus and a probabilistic reference atlas, which is generated via combined in vivo MRI and 9.4T ex vivo hippocampal subfield segmentations [22]. When hippocampi take on different folding configurations, such registrations can become ill-posed. HippUnfold overcomes these limitations in two ways: with extensive training (in this case $n=590$), U-Net can capture detailed inter-individual differences in folding and, secondly, our unfolding technique ensures that subfield labelling is topologically constrained [19].

We made use of 100 randomly-chosen subjects from the HCP-Aging dataset to compare the approach with the FS7 hippocampal subfields pipeline and ASHS using a recent manual subfield multi-atlas [29]. Figure 3A shows a side-by-side comparison of HippUnfold, ASHS, and FS7 to one representative 81 y.o. female. Figure 3B shows Bland-Altman plots comparing subfields CA1, CA3, and subiculum volume across the three methods in all 100 subjects, as well as their correlation with subjects' ages. Quantitative comparison between methods shows an age-related decline in subfield volumes for all methods, with a relative sparing of CA3. Thus, HippUnfold replicates the widely observed phenomenon of age-related decline, with similar effect sizes to FS and ASHS (Figure 3 supplement 1). A similar pattern can be seen across the other subfield volumes and in total hippocampal volume. Bland-Altman plots show major

differences in hippocampal subfield sizes between methods, which most likely results from inclusion of the hippocampal tail in HippUnfold.

A 81 yo female, HCP-Aging, right hippocampus

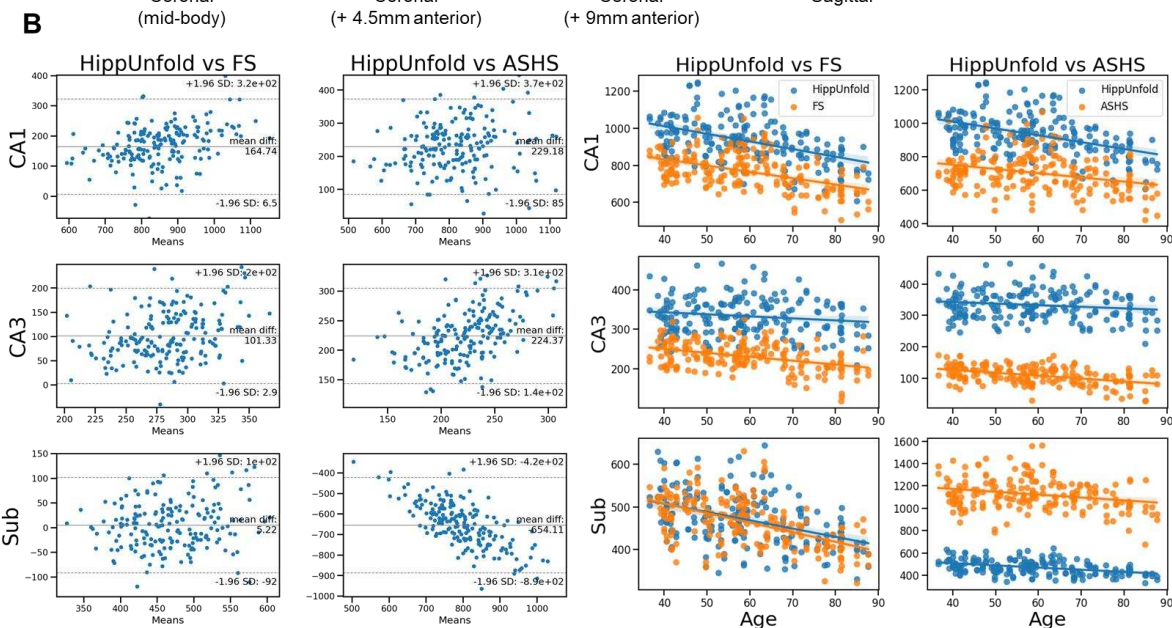
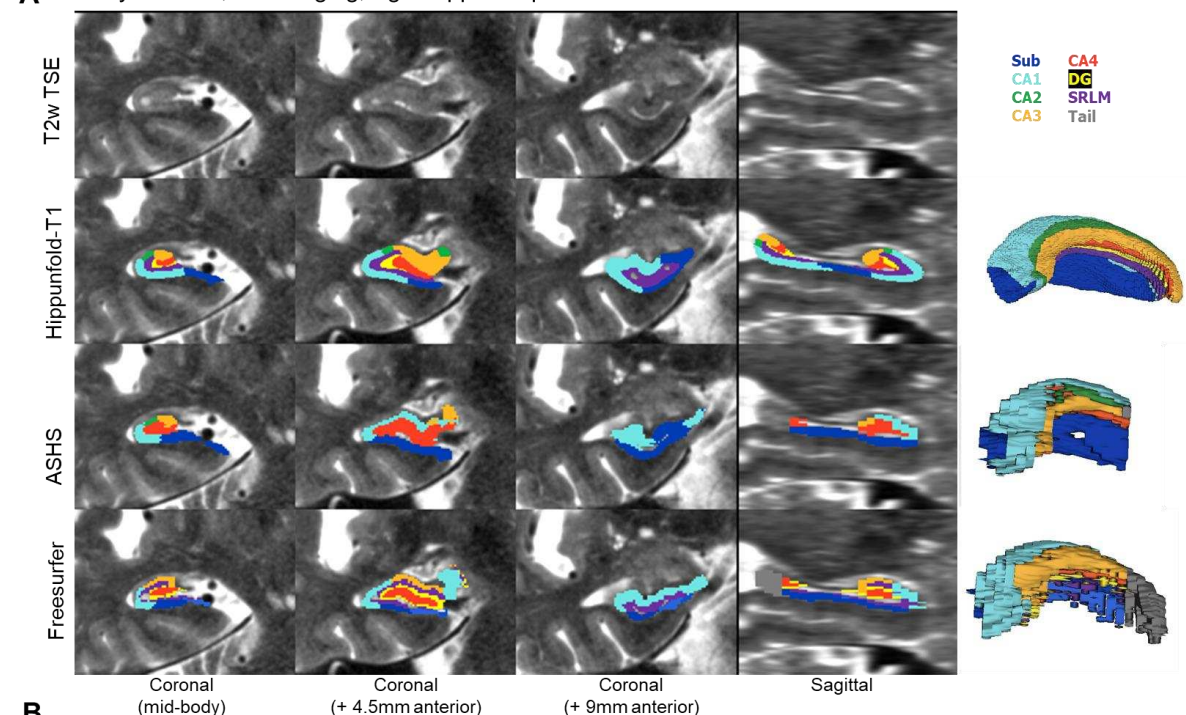


Figure 3. Out of sample performance of HippUnfold, ASHS, and Freesurfer (FS7). A) side-by-side comparison of results obtained from each method from one representative individual from the HCP-A datasets, which was not seen during training. B) Quantitative comparison of subfield volumes (left) and age-related volume changes (right) between methods. For a full set of snapshots illustrating the differences between these methods, see Supplemental files 2 and 3.

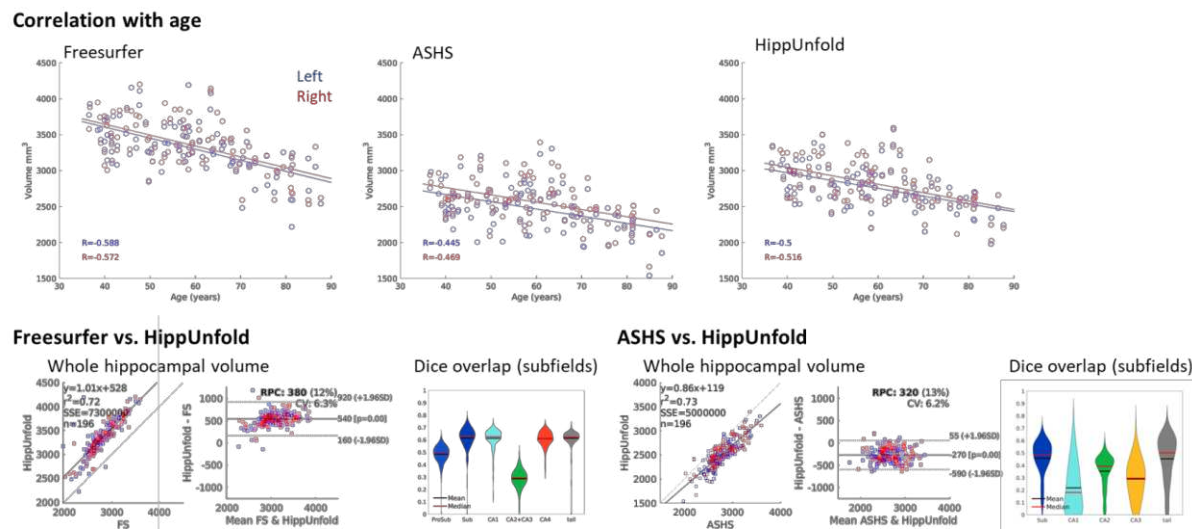


Figure 3 - figure supplement 1. Additional comparisons of results obtained from FS7, ASHS, and HippUnfold in 100 Human Connectome Project - Aging (HCP-A) subjects. All three methods showed a moderate correlation with age, as expected based on previous literature. Volumetric comparison of each method to HippUnfold directly revealed that there is a strong correlation between total hippocampal volumes obtained using HippUnfold and those obtained using FS7 or ASHS. HippUnfold and FS7 showed a moderate difference in overall volume (FS7 being on average 540mm³ larger), whereas ASHS volumes were consistently smaller (by an average of 270mm³). At the subfield level, using an unfolded subfield atlas from the corresponding method, there was relatively low Dice overlap between labels obtained using these three different methods in native space, which is likely driven by the gross volume differences between methods (ie. which tissues are included or excluded prior to unfolding) since subfield definitions are nearly identical after unfolding.

Within the HCP-YA test set, we compared subfield segmentations from ASHS and FS7 to those generated via HippUnfold in unfolded space, which is shown in Figure 4 in one representative subject. We then generated an unfolded subfield atlas using the maximum probability labels from all ASHS and FS7 subjects, which can be used in place of the default HippUnfold atlas generated via 3D BigBrain histology [21]. For comparison, we additionally show native space HippUnfold results obtained when using these alternative unfolded atlases..

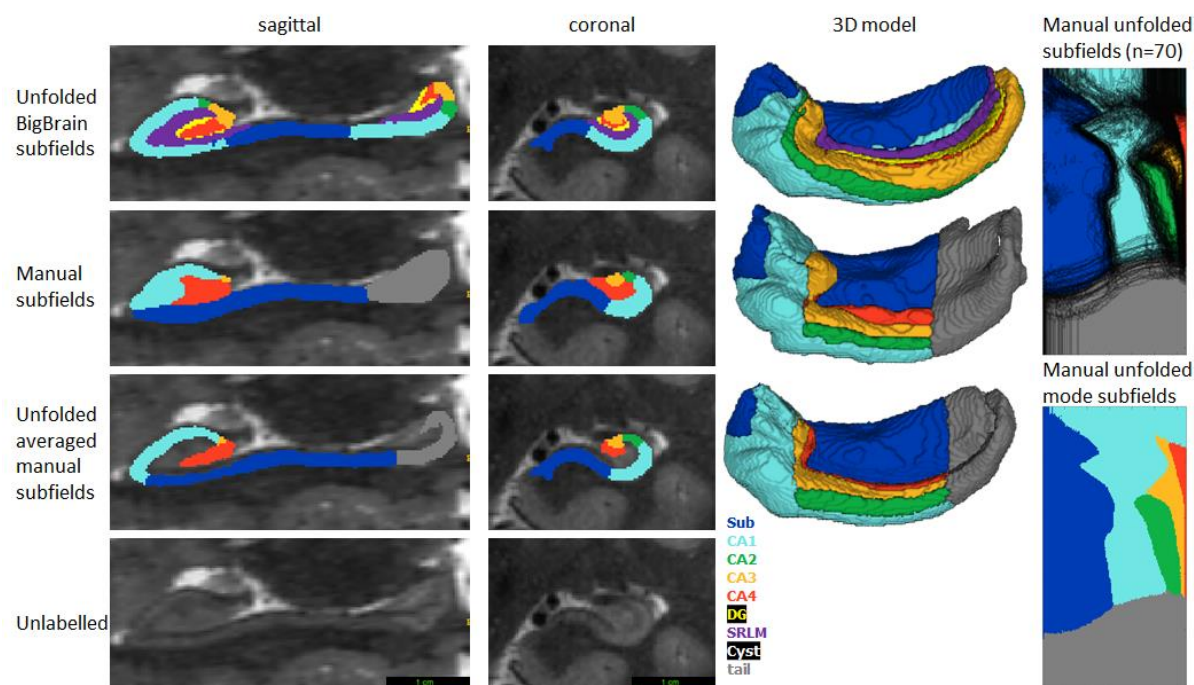


Figure 4 - figure supplement 1. Comparison of HippUnfold and fully manual subfield segmentations (data from [1]) in native and unfolded space from one representative subject. Sagittal and coronal slices and 3D models are shown for one representative subject. Note that the 3D model of a fully manual segmentation shows clear anterior and posterior digitations which were also present but considerably smoothed in HippUnfold.

Both ASHS and FS showed subfield discontinuities in unfolded space in at least some subjects, and FS even showed discontinuities in the group-averaged unfolded subfields. That is, some pieces of a given label were separated from the rest of that label. ASHS does not include an SRLM label and the SRLM produced by FS was not consistently aligned with that used in unfolding. Thus, subfields sometimes erroneously crossed the SRLM, breaking topology and explaining why discontinuities were sometimes observed in unfolded space. Ordering of labels was also not consistent in ASHS and FS. For example, sometimes CA1 would border not only CA2 but also CA3, CA4, and/or DG. Additionally, neither ASHS nor FS extends all subfields to the full anterior and posterior extent of the hippocampus. Instead, both methods simplify most of the anterior hippocampus as being CA1 and opt not to label subfields in the posterior hippocampus at all. These qualities are not in line with the anatomical ground truth shown in both classic and contemporary ex-vivo histological studies [4,9], which were indeed well captured by HippUnfold. FS also over-labelled hippocampal tissue, which can be seen reaching laterally into the ventricles in the coronal view. Similar errors have been documented for FS in other recent work [30,31].

Trained U-Net performance is similar to manual segmentation

From the HCP-YA dataset, a set of 738 (left and right from 369 subjects) gold standard hippocampal tissue (that is, hippocampal GM and surrounding structures) segmentations were generated according to the manual protocol defined in [21]. Specifically, this was done by raters

JD, MY, and BK using an incremental learning U-Net training regime described in the Materials and Methods nnUNet training section. Automated tissue segmentation was performed using nnUNet, a recent and highly generalizable implementation of a U-Net architecture [11]. This software was trained on 80% (n=590) of the gold standard segmentation data described above, with the remaining 20% (n=148) making up a test set. Left and right hippocampi from the same participant were never split across training and testing sets due to their high symmetry. Note that all input images were preprocessed, resampled, and cropped (see Figure 1 and Materials and Methods) prior to training. Within the training set, 5-fold cross-validation was performed as implemented in the nnUNet code. Training took place on an NVIDIA T4 Turing GPU over 72 hours. This process was carried out using either T1w or T2w input data with the same training/testing data split. All default nnUNet data augmentation and hyperparameters were used.

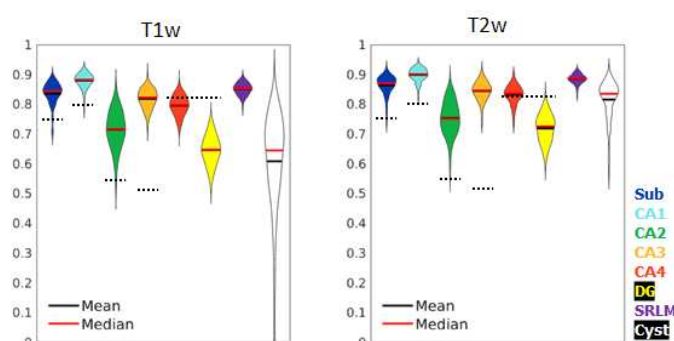


Figure 5. Test set performance in Dice overlaps between HippUnfold and manually unfolded subfields. All values are compared to ground truth manually defined tissues followed by unfolded subfield definition (manual unfold) to determine how small differences in gray matter parcellation propagate through the unfolding, subfield definition, and re-folding. Two models were trained in parallel using the same labels but different input MRI data modalities consisting of T1w or T2w data. Dotted black lines indicate corresponding values from [13], who include SRLM in all labels and combine CA4 and DG into one label.

Dice overlap depends heavily on the size of the label in question, being lower for smaller labels. Typically a score of >0.7 is considered good, and many fully manual protocols show dice scores of >0.8 for the larger subfields like CA1 or the subiculum, and 0.6-0.8 for smaller subfields like CA2 or CA3 (see [18] for overview). Within the HCP-YA test set, performance was similar or better than most fully manual protocols for T1w and T2w data. Performance on T1w images was only marginally poorer than T2w images which typically better show the SRLM and are popular in manual subfield segmentation protocols [18].

Generalizability to unseen datasets and populations

We aimed to determine whether our pipeline would generalize to unseen datasets with different acquisition protocols and sample populations. Hippocampal morphometry, integrity, and subfields are often of interest in disease states where atrophy or other structural abnormalities are observed [1,32–34]. For this reason, we examined the HCP-A datasets in which we anticipated cases of severe atrophy would be present in some older subjects. Figure 6A shows results from one representative individual (an 80 y.o. female with signs of age-related atrophy but good scan quality). Another common use-case for hippocampal subfield

segmentation is on anisotropic T2w data which is considered optimal for performing manual segmentation in most protocols [18], but may impose challenges for our method due to the difference in resolution. We thus applied HippUnfold to 7T-TSE data and also illustrate one representative subfield segmentation result in Figure 6A.

To demonstrate generalizability to pathological cases where hippocampal abnormalities can be confirmed, we also applied HippUnfold to a surgical epilepsy patient case. A 37 year-old female right-handed patient was investigated for surgical treatment of temporal lobe epilepsy, and clinical MR imaging at 1.5T revealed a FLAIR hyper-intensity in the right hippocampus. The patient was imaged pre-surgically for a 7 Tesla MRI research study, and the 0.7mm MP2RAGE T1w (UNI-DEN) image was segmented using HippUnfold, which is shown in Figure 6B. The patient underwent a right anterior temporal lobectomy and has been seizure-free (Engel class 1) for 4 years. Bilateral asymmetry is a strong indicator of epileptogenesis, and so results are examined for both the left and right hippocampi. Note that in addition to a loss in overall volume, the afflicted hippocampus showed relative sparing of CA2 which is a common observation in hippocampal sclerosis [35], as well reduced digitations compared to the left hemisphere. Examining additional patients in future work may reveal whether morphometry could be a clinical marker of epileptogenesis in patients with no remarkable clinical lesions.

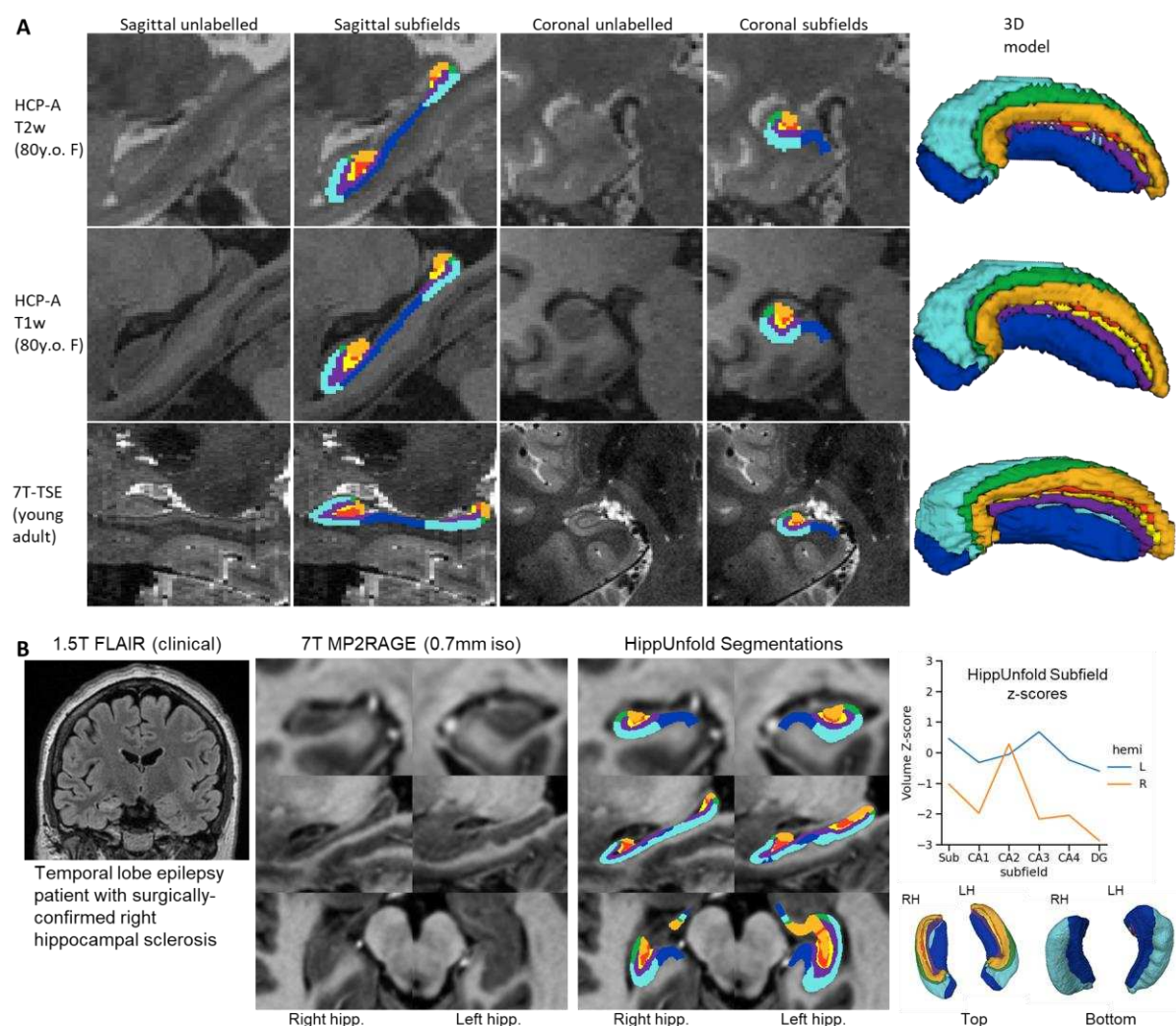


Figure 6. Examination of HippUnfold performance on additional datasets HCP-A (T1w and T2w) and anisotropic 7T-TSE data. A) Sample subjects' HippUnfold subfield segmentation in native resolution. The first two rows come from the same subjects but using different input data modalities. B) HippUnfold results from a 7T MRI of a temporal lobe epilepsy patient with surgically confirmed right hippocampal sclerosis.

Automated error flagging

Gold standard manual segmentations under the protocol used for subsequent unfolding were not available in novel datasets. Manually inspecting results from hundreds of subjects is time consuming. We thus streamlined this process by flagging potential segmentation errors by examining Dice overlap with a more conventional segmentation approach: deformable registration. For all datasets described above, we applied deformable fast B-spline registration [36] to the corresponding T1w or T2w template. Tissue segmentation results (generated at the nnUNet stage) were then propagated to template space and overlap with standard template hippocampal masks were examined, which is shown in Figure 7. Any subject with a Dice

overlap score of less than 0.7 was flagged and manually inspected for quality assurance. This made up 34/2126 (1.6%) samples in the HCP-YA T2w set (including training and testing subsets), 188/1312 (14.3%) samples from the HCP-A T2w set, 37/1312 (2.8%) samples from the HCP-A T1w set, and 3/92 (3.3%) samples from the 7T-TSE set. Closer inspection revealed that the vast majority of flagged cases were due to missed tissue in the nnUNet segmentation, an example of which is shown in Figure 7B. It is interesting to note that the most flagged cases were seen in the HCP-A T2w dataset even though T2w is a popular acquisition protocol for hippocampal subfield segmentation [18], and showed the best performance within the HCP-YA test set (Figure 5). This was likely not due to the age of subjects since few of the HCP-A T1w were flagged as possible errors, but instead may have been due to T2w scan quality, which was observed to be poor in some subjects, causing poor definition of the outer hippocampal boundaries. We recommend that future users carefully inspect results from any flagged subjects, and cases with errors can be either discarded or manually corrected. Some work has already demonstrated it is possible to synthesize or convert between MRI modalities [37], which could be used to alleviate the dependency on any single MR contrast. We cannot determine whether HippUnfold will work as intended on all new datasets, but within the generalization datasets examined here, results were excellent.

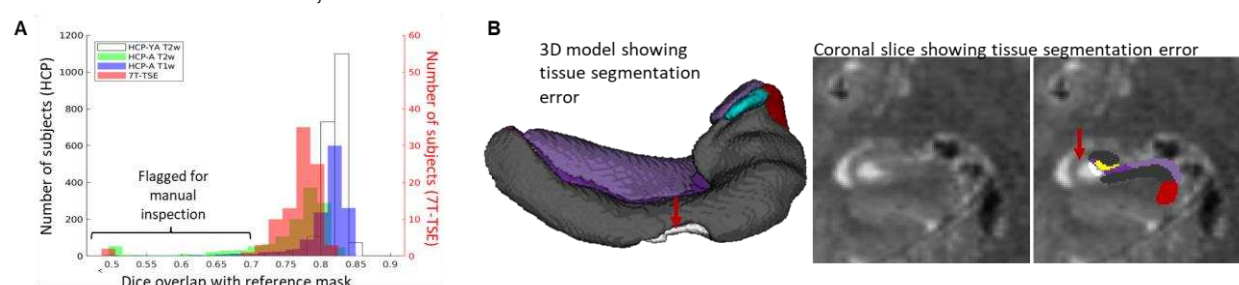


Figure 7. Automated error flagging via overlap with coarse, registration-based segmentation. A) Subjects flagged for Quality Assurance from each dataset based on Dice overlap with a reference mask approximated via deformable registration. B) Failed subject example illustrating missed tissue (red arrows) at the nnUNet stage of the HippUnfold pipeline.

FAIR principles in development

We designed this pipeline to employ FAIR principles (findability, accessibility, interoperability, reusability). As such, we have made use of several tools, conventions, and data standards to make HippUnfold extensible and easy to use.

The default file input-output structure of the HippUnfold command line interface was built in compliance with the Brain Imaging Data Standards (BIDS) [38] Applications (BIDS-Apps) guidelines [39], and easily findable amongst the list of available BIDS Apps¹. This is achieved via Snakebids, a tool designed to interface between BIDS datasets and Snakemake [40]. All aspects of HippUnfold use Snakemake [41], a workflow management system based on Python which is reproducible, scalable, and seamlessly combines shell commands, Python code, and external dependencies in a human-readable workflow. There is no need to install these dependencies, which are containerized within the Singularity or Docker versions of HippUnfold.

¹ <https://bids-apps.neuroimaging.io/apps/>

Altogether, this means that in a single line this pipeline can be applied intelligently to any BIDS-complaint dataset containing a whole-brain T1w image or a T2w image (whole-brain or limited field of view) without having to specify further details. Typical runtimes on a standard desktop are 30-60 minutes per subject, but this is further parallelized for faster processing when multiple subjects and added compute resources (or cloud computing) are available. Additional flags can be used to extend functionality to many other use-cases, including T1w only, T2w only, diffusion-weighted imaging, cases where a manual tissue segmentation is already available, or ex-vivo tissue samples.

Outputs of HippUnfold follow the standards for BIDS derivatives, and include preprocessed input images, volumetric subfield segmentations, inner, midthickness, and outer hippocampal surfaces, vertex-wise morphometric measures of thickness, curvature, and gyrification, and a brief quality control (QC) report. All surface-based outputs are combined into a Connectome Workbench [42] specification file for straightforward visualization analogous to HCP neocortical reconstructions. Outputs can be specified to include images in the original T1w space or in the resampled, cropped space that processing is performed in.

All code, code history, documentation, and support are offered online².

Discussion

One of the most powerful features of HippUnfold is its ability to provide topological alignment between subjects despite differences in folding (or digitation) structure. This is a critical element of mainstream neocortical analysis methods that, until now, has not been carried out systematically in the archicortex, or hippocampus. The power of this form of topological alignment is evident when mapping morphological or quantitative features across the hippocampus in a large population, which we demonstrate in Figure 2.

Segmentation of subfields is a task that is conceptually simplified through unfolding of the hippocampus to provide intrinsic anatomical axes. The axis we define as proximal-distal (PD), which follows along the SLM in a coronal slice, is also a landmark relied upon in many manual segmentation protocols for the hippocampal subfields, including a histologically-validated protocol that defines subfield boundaries by the proportional distance along the SLM [43]. The head and tail are areas where these heuristics have conventionally been very difficult to apply, since the slice angulation optimal for the body is not optimal for the curved head and tail, and work using multiplanar reformatting provides one alternative for curved regions of the hippocampus [44]. Our unfolding approach is conceptually analogous to these approaches, however, the added strength of our approach is that we apply the same conceptual rule (proportional distance along the SLM) while considering the entire 3D structure of the hippocampus.

We compare HippUnfold to other commonly used tools for hippocampal analysis, Freesurfer (FS7) and Automated Segmentation of Hippocampal Subfields (ASHS) (Figure 4). Both of these methods rely on smooth deformation of single or multi-atlas references, indicating they do not easily transfer to drastically different hippocampal folding patterns, which are often seen in the hippocampal head and tail across individuals. Both of these methods showed

² <https://github.com/khanlab/hippunfold>

unfolded subfield patterns that were less consistent with ground truth histological literature than the output provided by HippUnfold. Common issues in other methods include introducing breaks in subfield topology, simplifications like the exclusion of the hippocampal tail, or inconsistent ordering of subfields. This highlights some of the advantages of HippUnfold, which was designed to overcome these issues explicitly.

Several factors make surface-based methods difficult to implement in the hippocampus, including its small size, and the difficulty of distinguishing the hippocampal sulcus or SRLM laminae that separate hippocampal folds. Here we have overcome these issues using a highly generalizable and sensitive neural network ‘U-Net’ architecture, combined with our previously developed topological unfolding framework. Together, these methods achieved similar or better Dice overlap scores than what is typically seen between two manual raters on all subfields. We tested performance on new datasets (‘generalization’ datasets with different characteristics than the HCP training set) and saw good performance in nearly all cases. Specifically, we tested other common imaging protocols including different sample age groups (HCP-A) and thick-slice 7T TSE acquisitions often used in targeted hippocampal subfield imaging [18]. Though error rates were low, we do show how and why such errors sometimes occur, highlighting the importance that future users examine the brief quality control reports included for each subject. Thus, while HippUnfold is shown to work well with all datasets examined here, we expect the widespread adoption of higher-resolution acquisition techniques will further improve feasibility at other research institutes.

One important limitation of our method is that HippUnfold did not consistently show clear digitation in the hippocampal head, body, and tail which was sometimes seen in manual segmentation in the training set and in other work (see Figure 4 supplement 1). This reflects a lack of detail compared to histological ground truth materials, and affects downstream processing. That is, an overly smoothed hippocampal surface will appear thicker and have a smaller surface area compared to one that captures the full extent of digitations. This smaller surface area also results in each subfield boundary being proportionally shifted. Future work could improve this pipeline by training and testing with higher-resolution data where digitations can more clearly be distinguished both in labelmaps and in the underlying images.

A single unfolded subfield atlas based on 3D BigBrain ground truth histology [21] was employed within HippUnfold for all subjects here. As illustrated in Figure 4, alternative unfolded subfield atlases can be used as well. Though previous work demonstrated reduced inter-individual variability of subfield boundaries in unfolded space [5], the extent to which subfield boundaries vary after unfolding is not yet known. In the neocortex, this issue is also present but partially mitigated with surface-based registration of available features like intracortical myelin, sulcal patterns, or thickness (e.g. [45]). Such information could also be used in the unfolded hippocampus to further refine subject-specific subfield delineation, but would require histological ground truth data from multiple subjects to evaluate, ideally in 3D to avoid common out-of-plane sampling issues [19]. This level of precision is likely beyond current typical MRI resolution levels, but should be investigated in future work aiming to combine in-vivo and ex-vivo or other more specialized imaging.

The current work has applications beyond subfield imaging, enabling new investigations of the hippocampus on a columnar and laminar scale. For example, rather than employing subfield ROI-based analyses, statistics can be performed on a per-vertex basis for vertices

generated at different depths. This is in line with state-of-the-art neocortical analysis methods [6], and opens up the possibility of more precise localization of hippocampal properties. Similarly, it is worth noting that the methods used here are not necessarily restricted to MRI, as we have used the same surface-based unfolding in combination with manual segmentation to characterize the hippocampus in 3D BigBrain histology [21].

Altogether, we show that the BIDS App ‘HippUnfold’ that we have developed in this work (i) respects the different internal hippocampal folding configurations seen between individuals, (ii) can be applied flexibly to T1w or T2w data, sub-millimetric isotropic or thick-slice anisotropic data, and (iii) compares favourably to other popular methods including manual segmentation, ASHS, and FS7. We believe this tool will open up many avenues for future work including examination of variability in hippocampal morphology which may show developmental trajectories or be linked to disease, or the examination of hippocampal properties perpendicular or tangential to its laminar organization with diffusion-weighted imaging. Finally, it is worth noting that the methods described here stand to improve existing techniques by providing greater anatomical detail and, critically, greater precision through topological alignment across individuals who vary in anatomical structure.

Materials and Methods

Data

HippUnfold was designed and trained with the Human Connectome Project (HCP) 1200 young adult subject data release (HCP-YA) [46], and additionally tested on the HCP Aging dataset (HCP-A) [47], and anisotropic (or thick-slice) 7T data (7T-TSE) from [29] which is considered optimal by many hippocampal subfield researchers [18]. Informed consent and consent to publish were obtained by the original authors of the open source data examined here. Each of the three datasets included research ethics board approvals, as well as informed consent and, in the HCP-Aging dataset, assessment of the subjects' ability to provide consent. For the single epilepsy patient case examined here, research ethics board approval and informed consent were collected at the Western University (HSREB # 108952, Lawson: R-17-156). These data are summarized briefly in Table 1.

Table 1. MRI datasets used in training, evaluation, and comparison to extant methods. Methods employed include those proposed here (HippUnfold), the same processing but with manual segmentation (similar to previous work [21]) (manual unfold), Freesurfer v7.2.0 (FS7) [22], and an atlas of manual segmentations [29] used in ASHS [13].

Name	Modalities	Resolution	Sample size (L+R)	Methods employed
HCP-YA	T1w, T2w	0.7x0.7x0.7mm	n=590 (training)	HippUnfold Manual unfold
			n=148 (testing)	HippUnfold Manual unfold

				FS7
HCP-A	T1w T2w SPACE T2w TSE	0.8x0.8x0.8mm 0.8x0.8x0.8mm 0.4x0.4x2.0mm	n=1312 for T1w, T2w SPACE n=200 for T2w TSE (FS7, ASHS) n=200 for T1w (HippUnfold)	HippUnfold FS7 ASHS
7T-TSE (from ASHS atlas)	T2w	0.4x0.4x1.0mm	n=70	HippUnfold Manual subfields

nnUNet training

U-Nets perform classification of each input image voxel, and it is not constrained by smooth displacements used in deformable atlas registration. This is important because smooth deformable registration can be ill-posed for an atlas with a different hippocampal folding configuration than the target. For example, when trying to register a hippocampus with 2 anterior digitations to one with 4 anterior digitations, topological breaks may be seen which leads to loss of detail and disproportionate stretching or compression of some subfields, an issue that is discussed in [48]. Instead, a U-Net classifies voxels individually based on a combination of local low-level and global high-level image features with no explicit smoothness constraints.

In the current work, gold standard training and test comparison segmentations were generated in a semi-automated but heavily supervised manner: a U-Net implementation (NiftyNet [49], which is no longer maintained) was trained on existing data from [12]. This was then applied to new HCP-YA data and results were manually inspected. In many cases, results were poor due to the relatively small training sample size, but good quality segmentations from roughly 50% of subjects were selected and corrected by a manual rater (JD or MY) before being added to the initial training set for a new, de-novo application of U-Net training. The process of inspection and manual correction was always performed according to the protocol outlined in [12] to avoid systematic drift in rater performance. This process is typically referred to as incremental learning, and was applied in four iterations until a larger set of high quality, manually inspected and corrected segmentations (738 samples from 369 subjects) was achieved.

Once the gold-standard training data was obtained, we applied a U-Net implementation called nnUNet [11]. nnUNet was built to include many state-of-the art deep learning techniques including sensible hyperparameter selection, built-in 5-fold cross-validation, and other features that have been shown to perform well and minimize possible sources of bias in medical imaging. We thus applied all default parameters in our use of this tool. Training was repeated using the same labelmaps but different underlying images for T1w, T2w, and DWI images. For

each of these modalities, training took place on an NVIDIA T4 Turing GPU over 72 hours. Additional new models (or fine-tuned models) can also be trained and supplied within our code framework. Training data is available online at [50].

HippUnfold detailed pipeline

The command-line interface and options for HippUnfold are fully described online and in Supplemental file 1. A brief description of this pipeline is outlined here:

1. Preprocessing and resampling. Data is gathered via snakebids [55], which automatically and flexibly queries the specified BIDS directory for T1w and T2w images. Data is loaded and saved using NiBabel [56]. Processing of each image is as follows:
 - a. **T1w**: N4 bias correction is performed using the Advanced Normalization Toolkit (ANTs) [57] followed by affine registration (NiftyReg [36]) to CITI168 atlas [58]. This transformation is composed (Convert 3D or c3d [59]) with a precomputed transform from CITI168 to oblique to the long-axis of the hippocampus. Images are resampled to 0.3mm^3 and cropped to $128 \times 256 \times 128$ voxels centered on the CITI168 left and right hippocampi. Left hippocampi are flipped sagittally to resemble right hippocampi. We refer to this as cropped coronal oblique space.
 - b. **T2w**: N4 bias correction is performed as above, and if multiple T2w images are present then they are rigidly registered (NiftyReg) and then averaged, a rudimentary form of super-resolution sampling (e.g. [60]). Rigid registration to the corresponding T1w image is then performed (NiftyReg), and resampled to cropped coronal oblique space as above.

A 'modality' flag is used to determine which image modalities should be used if multiple are present in the input BIDS directory. Within the HippUnfold code, optional flags can be used to skip preprocessing and registration. Manually segmented hippocampal tissues can also be specified, which can be useful in ex-vivo MRI or other modalities on which the current nnUNet-based segmentation is not expected to work. In all cases, data are resampled to cropped coronal oblique space to match the nnUNet training setup. It is possible to skip this step only if a manually segmented hippocampal tissue class image is also provided (in which case nnUNet is not applied).

2. Tissue class segmentation. If a manually segmented hippocampal tissue image is not supplied, then the input image will be run through nnUNet [11], a state-of-the-art implementation of a deep convolutional neural network (U-Net) designed for image segmentation [61,62]. The output of nnUNet is a segmentation of tissue classes: hippocampal grey matter (GM) and the surrounding tissues which are used in defining unfolded coordinate boundaries: SRLM, medial temporal lobe cortex (MTLc), pial surface, hippocampal-amygdalar transition area (HATA), indusium griseum (IndGris), cysts, and the dentate gyrus granule cell layer (DG) (which also makes up part of hippocampal grey matter but which marks an endpoint of the unfolding coordinate framework and so it was given a distinct label).

3. Post-processing. Here we employed template shape injection [63] to correct possible segmentation errors, making labelmaps more amenable to the previously developed hippocampal unfolding methods. The basic principle of template shape injection is to perform highly fluid deformable registration of a template segmentation labelmap to a given subject's segmentation labelmap. This differs from typical registration-based segmentation methods in that the registration is optimizing labels rather than image feature similarity (i.e. registration is performed with binarized and smoothed labels as multiple contrasts, rather than on MRI intensities). Specifically, we used mean squared error between labels as the cost function, which is minimized when identical labels are overlapping. In our implementation, we apply multi-contrast deformable registration using Greedy [59]. It should be noted that in principle this step is not necessary for our pipeline, but in practice it helps avoid possible errors due to nnUNet segmentation faults (see main text Figure 5).

The reference template that we applied was created using manual segmentations from an open source ex-vivo dataset [64] that was manually segmented according to our previous manual hippocampal unfolding protocol [12]. Labelmaps from 22 samples were combined using a standard template building ANTs script 'buildtemplateparallel.sh' [65]. This template generation entails averaging all images and then registering each sample to the average, iteratively refining and sharpening the average image. This ex-vivo dataset was selected for template building because we had high confidence in the quality of these segmentation since they contained higher resolution and contrast than other datasets while still including multiple samples.

4. Unfolding. This code is described in [12] and was modified in [21], but we will provide a short summary here. A Laplace field varying from 0 to 1 is generated across hippocampal grey matter, with 0 being at its anterior boundary with the HATA and 1 being at its posterior boundary with the IndGris (anterior-posterior or AP). This provides a scaled, smooth, geodesic way to index points along this axis. Another Laplace field is generated across the proximal-distal (or PD) axis of the hippocampus (MTLc to DG), and together these two fields provide a coordinate system spanning hippocampus grey matter along two dimensions, which we plot as a flat rectangle (with a 2:1 aspect ratio to reflect the fact that the hippocampus is longer than it is wide). A third field is generated across the thickness of hippocampal grey matter (SRLM to outer boundary, or inner to outer, or IO). By default, the IO Laplace field is replaced by an equivolumetric model [7,66], which helps account for the effects of curvature on laminar features (though this replacement can optionally be disabled). We then compute displacement fields for transforming each voxel from native space to the 'unfolded' space spanned by these three (AP, PD, and IO) fields, and vice-versa.

Specifically, transformations for going between this unfolded space and native space are defined from Cartesian coordinates (x,y,z) to each Laplace field (AP, PD, and IO) for all hippocampal grey matter voxels. We performed piecewise linear interpolation (griddata from SciPy [67]) to go from each unfolded coordinate (AP, PD, IO) to back to Cartesian coordinates (x,y,z). Rather than map Cartesian coordinates to Laplace coordinates ranging from 0-1 (as in previous work [12]), we scale these gradients to make up a standard rectangular prism with a size of 256x128x16 voxels (dimensions corresponding

to AP, PD, and IO, respectively), at a voxel size of 0.15625mm^3 isotropic. This reference space is easily changed in the config file if a different unfolded resolution, size, or aspect ratio is desired. Each of these displacement fields is saved as a standard ITK 3D warp file in NIfTI format that can subsequently be applied to NIfTI or GIFTI files.

Unfolding of the dentate gyrus (DG) is introduced in the current work. This is performed with the same methods described above but over the domain of the dentate gyrus rather than all hippocampal grey matter. IO and PD fields are swapped with respect to the rest of the hippocampus reflecting the fact that during its development, the DG breaks from the rest of the cortical mantle and wraps around its terminus (CA4), making it topologically perpendicular to the rest of the hippocampus [68]. Endpoints for the DG are defined within the template shape used in step 3. Due to the thinness of the DG, it is often thinner than one voxel and so Laplace fields cannot easily be generated with the methods used in previous work. Thus, template shape injection is used to define the AP, PD, and IO fields within the DG, which were precomputed in the reference template with an idealized DG shape for unfolding). Thus, topological alignment between individuals does not perfectly follow the same Laplacian coordinate framework used in the rest of the hippocampus. Rather, this represents a more traditional volumetric approach to alignment via a template. The unfolded DG was defined by a rectangular prism with a size of $256 \times 32 \times 16$, reflecting the fact that it is smaller than the rest of the hippocampus (PD) but still spans the same long (AP) axis.

5. Subfield definition. In previous work [21] we performed a highly detailed 3D ground truth segmentation of hippocampal subfields using 3D BigBrain histology [21]. We mapped subfields using our Laplace coordinate framework, which provides implicit, topologically constrained registration between hippocampi. Thus, HippUnfold applies the same subfield boundary definitions to new samples in unfolded space, which are then propagated back to native space. Specifically, reference subfield labels already in unfolded space are warped to each subjects' native space using the warp files generated in step 4. Other unfolded subfield atlases can also be used, but BigBrain is the default since it is the most complete and detailed model of the hippocampal subfields to date.
6. GIFTI formatted outputs. In order to facilitate integration with other popular neuroimaging analysis tools, we have provided outputs in commonly used gifti surface formats in addition to volumetric nifti formats. Standardized unfolded surfaces corresponding to the inner, midthickness and outer surface were generated for one standard unfolded template and propagated to each subjects' native, folded space using the warp files generated in step 4. Note that unfolded space is mapped to a rectangle rather than a sphere as is typically used in the neocortex, and so surfaces are not fully enclosed. Tessellation of vertices are available in a variety of densities categorized by their average vertex spacing in the native space: 0.5mm (7262 vertices), 1mm (2004 vertices), 2mm (419 vertices), or the legacy unfoldiso (32,004, ~32K, corresponding to the number of unfolded coordinates used in previous work, or 254×126). Standardized unfolded tessellations were generated by starting with a 512×256 grid with each point connected to its neighbours, making a uniform mesh in unfolded space. Mesh vertices were iteratively removed until vertex distances after transforming to an averaged

native space were achieved with the above spacings. In the case of the 32K surfaces, meshes were generated with 254x126 points with no vertices being removed, meaning that vertex distances are uniformly-spaced in unfolded space but distorted in native space. In addition to hippocampal surfaces, dentate gyrus surfaces are also generated, with the following unfolded meshes: 0.5mm (1788 vertices), 1mm (449 vertices), 2mm (64 vertices), and unfoldiso (7620 vertices, 254x30).

7. Morphometry. Connectome Workbench commands [23,69] are used to extract measures of thickness between inner and outer surfaces, as well as curvature and gyrification along midthickness surfaces. The curvature metric is calculated using the mean curvature, calculated on a midthickness surface smoothed with the mean curvature midthickness surfaces, first smoothed by neighbourhood averaging (strength=0.6, iterations=100). The gyrification metric is defined as the ratio of native-space surface area over unfolded-space surface area, where the surface area is calculated at each vertex as the average of areas of connected triangles. Additional data (for example, fMRI, DWI, or others) can be sampled at each vertex with the code provided in HippUnfold (the volume to surface mapping command in Connectome Workbench). With the implicit registration provided by unfolded space and the tessellation of these surfaces, such data can readily be compared across hippocampal samples without the need for further registration. These data can be subgrouped according to subfield labels, as in ROI analysis styles, or each vertex can be examined separately as in searchlight or data-driven analysis styles. Alternatively, gradient-based analyses can be applied based on Laplace coordinates and their corresponding surface mesh tessellations (see [70] for example).

Supplemental file 1. HippUnfold Documentation. This document fully describes the HippUnfold installation, command-line interface, options, outputs, and provides several useful pieces of information including worked examples and useful tips on viewing data in other common platforms.

Supplemental file 2. Side-by-side snapshot comparison of HCP-A segmentations results from HippUnfold, FS7, and ASHS from the left hemisphere. Snapshots were taken at the coronal centroid, centroid +15 slices, centroid+30 slices, and the sagittal centroid.

Supplemental file 3. Side-by-side snapshot comparison of HCP-A segmentations results from HippUnfold, FS7, and ASHS from the right hemisphere. Snapshots were taken at the coronal centroid, centroid +15 slices, centroid+30 slices, and the sagittal centroid.

Acknowledgements

This work was supported by a Canadian Institutes for Health Research Project Grant (CIHR Grant # 366062) to A.K. and S.K. AK was supported by the Canada Research Chairs program #950-231964, NSERC Discovery Grant #6639, and Canada Foundation for Innovation (CFI) John R. Evans Leaders Fund project #37427, the Canada First Research Excellence Fund, and Brain Canada. J.D. was funded through a Natural Sciences and Engineering

Research Council doctoral Canadian Graduate Scholarship (NSERC CGS-D). R.A.M.H was supported by a BrainsCAN postdoctoral fellowship for this work.

Data were provided in part by the Human Connectome Project, WU-Minn Consortium (Principal Investigators: David Van Essen and Kamil Ugurbil; 1U54MH091657) funded by the 16 NIH Institutes and Centers that support the NIH Blueprint for Neuroscience Research; and by the McDonnell Center for Systems Neuroscience at Washington University.

Data and/or research tools used in the preparation of this manuscript were obtained from the National Institute of Mental Health (NIMH) Data Archive (NDA). NDA is a collaborative informatics system created by the National Institutes of Health to provide a national resource to support and accelerate research in mental health. Dataset identifier:

dx.doi.org/10.15154/1520707. This manuscript reflects the views of the authors and may not reflect the opinions or views of the NIH or of the Submitters submitting original data to NDA.

Data was also provided in part by Berron *et al.*, 2017, in their published work “A protocol for manual segmentation of medial temporal lobe subregions in 7 Tesla MRI” [29] which includes MRI images and subfield segmentations.

References

1. Thom M. Review: Hippocampal sclerosis in epilepsy: a neuropathology review. *Neuropathol Appl Neurobiol.* 2014;40: 520–543.
2. O’Keefe J, Nadel L, Regents Professor of Psychology Lynn Nadel. *The Hippocampus as a Cognitive Map.* Oxford University Press, USA; 1978.
3. Dill V, Franco AR, Pinho MS. Automated Methods for Hippocampus Segmentation: the Evolution and a Review of the State of the Art. *Neuroinformatics.* 2015. pp. 133–150. doi:10.1007/s12021-014-9243-4
4. Duvernoy HM. *The Human Hippocampus.* 1998. doi:10.1007/978-3-662-03628-0
5. DeKraker J, Ferko KM, Lau JC, Köhler S, Khan AR. Unfolding the hippocampus: An intrinsic coordinate system for subfield segmentations and quantitative mapping. *NeuroImage.* 2018. pp. 408–418. doi:10.1016/j.neuroimage.2017.11.054
6. Van Essen DC, Drury HA, Joshi S, Miller MI. Functional and structural mapping of human cerebral cortex: solutions are in the surfaces. *Adv Neurol.* 2000;84: 23–34.
7. Waehnert MD, Dinse J, Weiss M, Streicher MN, Waehnert P, Geyer S, et al. Anatomically motivated modeling of cortical laminae. *Neuroimage.* 2014;93 Pt 2: 210–220.
8. Chang C, Huang C, Zhou N, Li SX, Ver Hoef L, Gao Y. The bumps under the hippocampus. *Hum Brain Mapp.* 2018;39: 472–490.
9. Ding S-L, Van Hoesen GW. Organization and Detailed Parcellation of Human Hippocampal Head and Body Regions Based on a Combined Analysis of Cyto- and Chemoarchitecture. *J Comp Neurol.* 2015;523: 2233–2253.
10. Cai S, Yu X, Zhang Q, Huang C, Gao Y. Is hippocampus getting bumpier with age: a quantitative analysis of fine-scale dentational feature under the hippocampus on 552 healthy subjects. *Medical Imaging 2019: Image Processing.* 2019. doi:10.1117/12.2512701
11. Isensee F, Jaeger PF, Kohl SAA, Petersen J, Maier-Hein KH. nnU-Net: a self-configuring method for deep learning-based biomedical image segmentation. *Nat Methods.* 2021;18: 203–211.
12. DeKraker J, Ferko KM, Lau JC, Köhler S, Khan AR. Unfolding the hippocampus: An intrinsic coordinate system for subfield segmentations and quantitative mapping. *Neuroimage.* 2018;167: 408–418.
13. Yushkevich PA, Pluta JB, Wang H, Xie L, Ding S-L, Gertje EC, et al. Automated volumetry and regional thickness analysis of hippocampal subfields and medial temporal cortical structures in mild cognitive impairment. *Hum Brain Mapp.* 2015;36: 258–287.
14. Chakravarty MM, Steadman P, van Eede MC, Calcott RD, Gu V, Shaw P, et al. Performing label-fusion-based segmentation using multiple automatically generated templates. *Hum Brain Mapp.* 2013;34: 2635–2654.
15. Pipitone J, Park MTM, Winterburn J, Lett TA, Lerch JP, Pruessner JC, et al. Multi-atlas

- segmentation of the whole hippocampus and subfields using multiple automatically generated templates. *Neuroimage*. 2014;101: 494–512.
16. Du G, Cao X, Liang J, Chen X, Zhan Y. Medical Image Segmentation based on U-Net: A Review. *Journal of Imaging Science and Technology*. 2020. pp. 20508–20501. doi:10.2352/j.imagingsci.technol.2020.64.2.020508
 17. Wisse LEM, Daugherty AM, Olsen RK, Berron D, Carr VA, Stark CEL, et al. A harmonized segmentation protocol for hippocampal and parahippocampal subregions: Why do we need one and what are the key goals? *Hippocampus*. 2017;27: 3–11.
 18. Yushkevich PA, Amaral RSC, Augustinack JC, Bender AR, Bernstein JD, Boccardi M, et al. Quantitative comparison of 21 protocols for labeling hippocampal subfields and parahippocampal subregions in in vivo MRI: towards a harmonized segmentation protocol. *Neuroimage*. 2015;111: 526–541.
 19. DeKraker J, Köhler S, Khan AR. Surface-based hippocampal subfield segmentation. *Trends in Neurosciences*. 2021. doi:10.1016/j.tins.2021.06.005
 20. Amunts K, Lepage C, Borgeat L, Mohlberg H, Dickscheid T, Rousseau M-É, et al. BigBrain: an ultrahigh-resolution 3D human brain model. *Science*. 2013;340: 1472–1475.
 21. DeKraker J, Lau JC, Ferko KM, Khan AR, Köhler S. Hippocampal subfields revealed through unfolding and unsupervised clustering of laminar and morphological features in 3D BigBrain. *Neuroimage*. 2020;206: 116328.
 22. Iglesias JE, Augustinack JC, Nguyen K, Player CM, Player A, Wright M, et al. A computational atlas of the hippocampal formation using ex vivo, ultra-high resolution MRI: Application to adaptive segmentation of in vivo MRI. *Neuroimage*. 2015;115: 117–137.
 23. Glasser MF, Sotiropoulos SN, Wilson JA, Coalson TS, Fischl B, Andersson JL, et al. The minimal preprocessing pipelines for the Human Connectome Project. *Neuroimage*. 2013;80: 105–124.
 24. Ganzetti M, Wenderoth N, Mantini D. Whole brain myelin mapping using T1- and T2-weighted MR imaging data. *Front Hum Neurosci*. 2014;8: 671.
 25. Hernández M, Guerrero GD, Cecilia JM, García JM, Inuggi A, Jbabdi S, et al. Accelerating fibre orientation estimation from diffusion weighted magnetic resonance imaging using GPUs. *PLoS One*. 2013;8: e61892.
 26. Sotiropoulos SN, Hernández-Fernández M, Vu AT, Andersson JL, Moeller S, Yacoub E, et al. Fusion in diffusion MRI for improved fibre orientation estimation: An application to the 3T and 7T data of the Human Connectome Project. *Neuroimage*. 2016;134: 396–409.
 27. Wael RV de, de Wael RV, Larivière S, Caldaïrou B, Hong S-J, Margulies DS, et al. Anatomical and microstructural determinants of hippocampal subfield functional connectome embedding. *Proceedings of the National Academy of Sciences*. 2018. pp. 10154–10159. doi:10.1073/pnas.1803667115
 28. Crombe A, Planche V, Raffard G, Bourel J, Dubourdieu N, Panatier A, et al. Deciphering the microstructure of hippocampal subfields with in vivo DTI and NODDI: Applications to

- experimental multiple sclerosis. *Neuroimage*. 2018;172: 357–368.
29. Berron D, Vieweg P, Hochkeppeler A, Pluta JB, Ding S-L, Maass A, et al. A protocol for manual segmentation of medial temporal lobe subregions in 7 Tesla MRI. *Neuroimage Clin*. 2017;15: 466–482.
 30. Wisse LEM, Biessels GJ, Geerlings MI. A Critical Appraisal of the Hippocampal Subfield Segmentation Package in FreeSurfer. *Front Aging Neurosci*. 2014;6: 261.
 31. Haast RAM, Lau JC, Ivanov D, Menon RS, Uludağ K, Khan AR. Effects of MP2RAGE B sensitivity on inter-site T reproducibility and hippocampal morphometry at 7T. *Neuroimage*. 2021;224: 117373.
 32. Haukvik UK, Tamnes CK, Söderman E, Agartz I. Neuroimaging hippocampal subfields in schizophrenia and bipolar disorder: A systematic review and meta-analysis. *J Psychiatr Res*. 2018;104: 217–226.
 33. Steve TA, Jirsch JD, Gross DW. Quantification of subfield pathology in hippocampal sclerosis: a systematic review and meta-analysis. *Epilepsy Res*. 2014;108: 1279–1285.
 34. Carr VA, Bernstein JD, Favila SE, Rutt BK, Kerchner GA, Wagner AD. Individual differences in associative memory among older adults explained by hippocampal subfield structure and function. *Proc Natl Acad Sci U S A*. 2017;114: 12075–12080.
 35. Blümcke I, Thom M, Aronica E, Armstrong DD, Bartolomei F, Bernasconi A, et al. International consensus classification of hippocampal sclerosis in temporal lobe epilepsy: a Task Force report from the ILAE Commission on Diagnostic Methods. *Epilepsia*. 2013;54: 1315–1329.
 36. Modat M, Ridgway GR, Taylor ZA, Lehmann M, Barnes J, Hawkes DJ, et al. Fast free-form deformation using graphics processing units. *Comput Methods Programs Biomed*. 2010;98: 278–284.
 37. Iglesias JE, Billot B, Balbastre Y, Tabari A, Conklin J, Gilberto González R, et al. Joint super-resolution and synthesis of 1 mm isotropic MP-RAGE volumes from clinical MRI exams with scans of different orientation, resolution and contrast. *NeuroImage*. 2021. p. 118206. doi:10.1016/j.neuroimage.2021.118206
 38. Gorgolewski KJ, Auer T, Calhoun VD, Craddock RC, Das S, Duff EP, et al. The brain imaging data structure, a format for organizing and describing outputs of neuroimaging experiments. *Sci Data*. 2016;3: 160044.
 39. Gorgolewski KJ, Alfaro-Almagro F, Auer T, Bellec P, Capotă M, Chakravarty MM, et al. BIDS apps: Improving ease of use, accessibility, and reproducibility of neuroimaging data analysis methods. *PLoS Comput Biol*. 2017;13: e1005209.
 40. Khan A, Haast R. Snakebids - BIDS integration into snakemake workflows. Zenodo; 2021. doi:10.5281/ZENODO.4488249
 41. Mölder F, Jablonski KP, Letcher B, Hall MB, Tomkins-Tinch CH, Sochat V, et al. Sustainable data analysis with Snakemake. *F1000Res*. 2021;10: 33.
 42. Marcus DS, Harms MP, Snyder AZ, Jenkinson M, Wilson JA, Glasser MF, et al. Human

- Connectome Project informatics: quality control, database services, and data visualization. *Neuroimage*. 2013;80: 202–219.
43. Steve TA, Yasuda CL, Coras R, Lail M, Blumcke I, Livy DJ, et al. Development of a histologically validated segmentation protocol for the hippocampal body. *Neuroimage*. 2017;157: 219–232.
 44. Gross DW, Misaghi E, Steve TA, Wilman AH, Beaulieu C. Curved multiplanar reformatting provides improved visualization of hippocampal anatomy. *Hippocampus*. 2020;30: 156–161.
 45. Glasser MF, Coalson TS, Robinson EC, Hacker CD, Harwell J, Yacoub E, et al. A multi-modal parcellation of human cerebral cortex. *Nature*. 2016;536: 171–178.
 46. Van Essen DC, Smith SM, Barch DM, Behrens TEJ, Yacoub E, Ugurbil K, et al. The WU-Minn Human Connectome Project: an overview. *Neuroimage*. 2013;80: 62–79.
 47. Bookheimer SY, Salat DH, Terpstra M, Ances BM, Barch DM, Buckner RL, et al. The Lifespan Human Connectome Project in Aging: An overview. *Neuroimage*. 2019;185: 335–348.
 48. DeKraker J, Köhler S, Khan AR. Surface-based hippocampal subfield segmentation. *Trends Neurosci*. 2021. doi:10.1016/j.tins.2021.06.005
 49. Gibson E, Li W, Sudre C, Fidon L, Shakir DI, Wang G, et al. NiftyNet: a deep-learning platform for medical imaging. *Comput Methods Programs Biomed*. 2018;158: 113–122.
 50. Dekraker J, Khan A. HippUnfold HCP-YA Training Data. Zenodo; 2022. doi:10.5281/ZENODO.7007362
 51. Giuliano A, Donatelli G, Cosottini M, Tosetti M, Retico A, Fantacci ME. Hippocampal subfields at ultra high field MRI: An overview of segmentation and measurement methods. *Hippocampus*. 2017;27: 481–494.
 52. Kerchner GA, Deutsch GK, Zeineh M, Dougherty RF, Saranathan M, Rutt BK. Hippocampal CA1 apical neuropil atrophy and memory performance in Alzheimer's disease. *Neuroimage*. 2012;63: 194–202.
 53. Treit S, Steve T, Gross DW, Beaulieu C. High resolution in-vivo diffusion imaging of the human hippocampus. *Neuroimage*. 2018;182: 479–487.
 54. Wisse LEM, Chételat G, Daugherty AM, de Flores R, la Joie R, Mueller SG, et al. Hippocampal subfield volumetry from structural isotropic 1 mm MRI scans: A note of caution. *Hum Brain Mapp*. 2021;42: 539–550.
 55. Khan A, Haast R. Snakebids - BIDS integration into snakemake workflows. 2021 [cited 3 Dec 2021]. doi:10.5281/zenodo.4488249
 56. Brett M, Markiewicz CJ, Hanke M, Côté M-A, Cipollini B, McCarthy P, et al. nipy/nibabel: 3.2.1. 2020 [cited 26 Oct 2021]. doi:10.5281/zenodo.4295521
 57. Avants BB, Epstein CL, Grossman M, Gee JC. Symmetric diffeomorphic image registration with cross-correlation: evaluating automated labeling of elderly and neurodegenerative

- brain. *Med Image Anal.* 2008;12: 26–41.
58. Pauli WM, Nili AN, Michael Tyszka J. A high-resolution probabilistic in vivo atlas of human subcortical brain nuclei. *Scientific Data.* 2018. doi:10.1038/sdata.2018.63
59. Yushkevich PA, Pashchinskiy A, Oguz I, Mohan S, Eric Schmitt J, Stein JM, et al. User-Guided Segmentation of Multi-modality Medical Imaging Datasets with ITK-SNAP. *Neuroinformatics.* 2019. pp. 83–102. doi:10.1007/s12021-018-9385-x
60. Winterburn JL, Pruessner JC, Chavez S, Schira MM, Lobaugh NJ, Voineskos AN, et al. A novel in vivo atlas of human hippocampal subfields using high-resolution 3T magnetic resonance imaging. *NeuroImage.* 2013. pp. 254–265. doi:10.1016/j.neuroimage.2013.02.003
61. Lu L, Zheng Y, Carneiro G, Yang L. Deep Learning and Convolutional Neural Networks for Medical Image Computing: Precision Medicine, High Performance and Large-Scale Datasets. Springer; 2017.
62. Wiestler B, Menze B. Deep learning for medical image analysis: a brief introduction. *Neurooncol Adv.* 2020;2: iv35–iv41.
63. Qiu A, Miller MI. Multi-structure network shape analysis via normal surface momentum maps. *Neuroimage.* 2008;42: 1430–1438.
64. Wisse LEM, Adler DH, Ittyerah R, Pluta JB, Robinson JL, Schuck T, et al. Comparison of In Vivo and Ex Vivo MRI of the Human Hippocampal Formation in the Same Subjects. *Cereb Cortex.* 2017;27: 5185–5196.
65. Avants BB, Yushkevich P, Pluta J, Minkoff D, Korczykowski M, Detre J, et al. The optimal template effect in hippocampus studies of diseased populations. *Neuroimage.* 2010;49: 2457–2466.
66. Huntenburg JM, Steele CJ, Bazin P-L. Nighres: processing tools for high-resolution neuroimaging. *Gigascience.* 2018;7. doi:10.1093/gigascience/giy082
67. Virtanen P, Gommers R, Oliphant TE, Haberland M, Reddy T, Cournapeau D, et al. SciPy 1.0: fundamental algorithms for scientific computing in Python. *Nat Methods.* 2020;17: 261–272.
68. Duvernoy HM. The Human Hippocampus: Functional Anatomy, Vascularization and Serial Sections with MRI. Springer Science & Business Media; 2013.
69. Marcus DS, Harwell J, Olsen T, Hodge M, Glasser MF, Prior F, et al. Informatics and data mining tools and strategies for the human connectome project. *Front Neuroinform.* 2011;5: 4.
70. Vos de Wael R, Larivière S, Caldairou B, Hong S-J, Margulies DS, Jefferies E, et al. Anatomical and microstructural determinants of hippocampal subfield functional connectome embedding. *Proc Natl Acad Sci U S A.* 2018;115: 10154–10159.