


RESEARCH ARTICLE

Open Access



# Emergence of wheat blast in Bangladesh was caused by a South American lineage of *Magnaporthe oryzae*

M. Tofazzal Islam<sup>1\*</sup>, Daniel Croll<sup>2</sup>, Pierre Gladieux<sup>3</sup>, Darren M. Soanes<sup>4</sup>, Antoine Persoons<sup>5</sup>, Pallab Bhattacharjee<sup>1</sup>, Md. Shaïd Hossain<sup>1</sup>, Dipali Rani Gupta<sup>1</sup>, Md. Mahbubur Rahman<sup>1</sup>, M. Golam Mahboob<sup>6</sup>, Nicola Cook<sup>5</sup>, Moin U. Salam<sup>7</sup>, Musrat Zahan Surovy<sup>1</sup>, Vanessa Bueno Sancho<sup>5</sup>, João Leodato Nunes Maciel<sup>8</sup>, Antonio Nhani Júnior<sup>8</sup>, Vanina Lilián Castroagudín<sup>9</sup>, Juliana T. de Assis Reges<sup>9</sup>, Paulo Cezar Ceresini<sup>9</sup>, Sebastien Ravel<sup>10</sup>, Ronny Kellner<sup>11,12</sup>, Elisabeth Fournier<sup>3</sup>, Didier Tharreau<sup>10</sup>, Marc-Henri Lebrun<sup>13</sup>, Bruce A. McDonald<sup>2</sup>, Timothy Stitt<sup>5</sup>, Daniel Swan<sup>5</sup>, Nicholas J. Talbot<sup>4</sup>, Diane G. O. Saunders<sup>5,14</sup>, Joe Win<sup>11</sup> and Sophien Kamoun<sup>11\*</sup> 

## Abstract

**Background:** In February 2016, a new fungal disease was spotted in wheat fields across eight districts in Bangladesh. The epidemic spread to an estimated 15,000 hectares, about 16 % of the cultivated wheat area in Bangladesh, with yield losses reaching up to 100 %. Within weeks of the onset of the epidemic, we performed transcriptome sequencing of symptomatic leaf samples collected directly from Bangladeshi fields.

**Results:** Reinoculation of seedlings with strains isolated from infected wheat grains showed wheat blast symptoms on leaves of wheat but not rice. Our phylogenomic and population genomic analyses revealed that the wheat blast outbreak in Bangladesh was most likely caused by a wheat-infecting South American lineage of the blast fungus *Magnaporthe oryzae*.

**Conclusion:** Our findings suggest that genomic surveillance can be rapidly applied to monitor plant disease outbreaks and provide valuable information regarding the identity and origin of the infectious agent.

**Keywords:** Field pathogenomics, Wheat blast, Phylogenomic analysis, *Eleusine indica*, *Oryza sativa*

## Background

Outbreaks caused by fungal diseases have increased in frequency and are a recurrent threat to global food security [1]. One example is blast, a fungal disease of rice, wheat, and other grasses, that can destroy enough food supply to sustain millions of people [1–3]. Until the 1980s, the blast disease was not known to affect wheat, a main staple crop critical to ensuring global food security. In 1985, the disease was first reported on wheat (*Triticum aestivum* L.) in Paraná State, Brazil [4]. It has since spread throughout many of the important wheat-

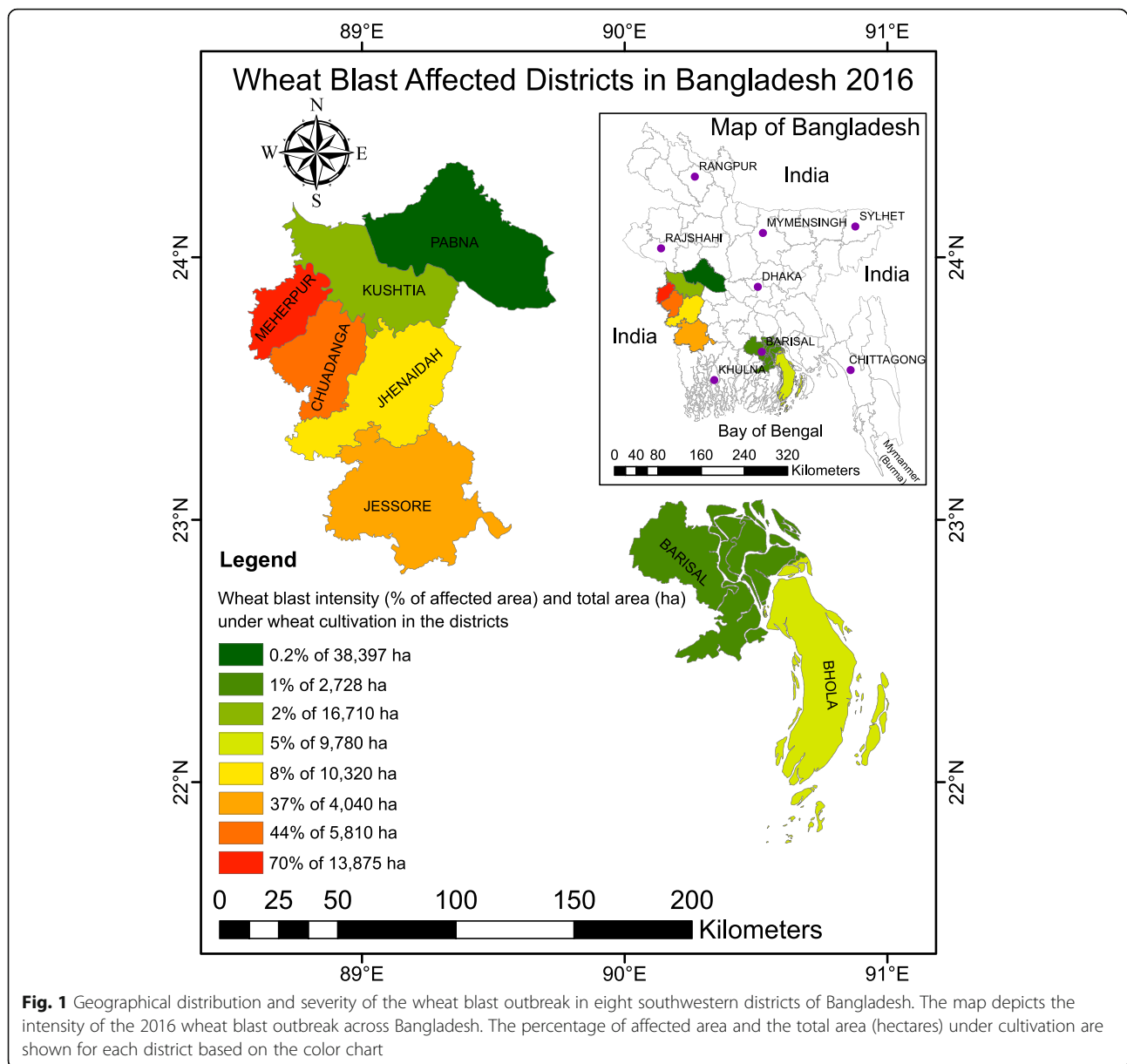
producing areas of Brazil and to neighboring South American countries including Bolivia and Paraguay. In South America, blast is now a major threat to wheat production [5–7]. Currently, wheat blast affects as much as 3 million hectares, seriously limiting the potential for wheat production in the vast grasslands region of South America.

Blast diseases of grasses are caused by fungal species from the Pyriculariaceae [8] and can occur on 50 grass species [9]. However, a high degree of host specificity exists among and within these fungal species [8, 10]. In South America, wheat blast is caused by isolates of *Magnaporthe oryzae* (syn. *Pyricularia oryzae*) known as pathotype *Triticum* [10–12]. The rice-infecting isolates of *M. oryzae* are genetically distinct from wheat-infecting isolates and generally do not infect wheat [11,

\* Correspondence: tofazzalislam@yahoo.com; sophien.kamoun@tsl.ac.uk

<sup>1</sup>Department of Biotechnology, Bangabandhu Sheikh Mujibur Rahman Agricultural University, Gazipur 1706, Bangladesh

<sup>11</sup>The Sainsbury Laboratory, Norwich Research Park, Norwich NR4 7UH, UK  
Full list of author information is available at the end of the article



13–20]. Typical symptoms of wheat blast on spikes are premature bleaching of spikelets and entire heads [21–23]. Severely infected wheat heads can be killed, resulting in severe yield losses [21, 22]. The disease is generally spread by infected seeds and airborne spores, and the fungus can survive in infected crop residues and seeds [14]. Little is known about the physiology and genetics of the wheat blast pathogen, and our understanding of the molecular interactions of this pathogen with wheat remains limited.

In February 2016, wheat blast was detected for the first time in Asia with reports of a severe outbreak in Bangladesh relayed through local authorities and the media [24]. Although wheat is not a traditional crop in

Bangladesh, its cultivation has expanded in recent years, making it the second major food source after rice [25]. The outbreak is particularly worrisome because wheat blast could spread further to major wheat-producing areas in neighboring South Asian countries, thus threatening food security across the region. Here, we report our immediate response to this plant disease outbreak. To rapidly determine the precise identity and likely origin of the outbreak pathogen, we applied field pathogenomics, in which we performed transcriptome sequencing of symptomatic and asymptomatic leaf samples collected from infected wheat fields in Bangladesh [26, 27]. To promote the project and recruit experts, we immediately released all raw sequence data through a

dedicated website Open Wheat Blast (<http://www.wheat-blast.net>). Phylogenomic and population genomic analyses revealed that the Bangladesh wheat blast outbreak was probably caused by isolates belonging to the South American wheat-infecting lineage of *M. oryzae*. We conclude that the wheat blast pathogen was most likely introduced into Asia from South America.

## Results and discussion

### Geographical distribution of the wheat blast outbreak in Bangladesh

The total area of wheat cultivation in Bangladesh in 2016 was about 498,000 ha (Department of Agricultural Extension, Bangladesh). Wheat blast was observed in eight southwestern districts, viz., Pabna, Kushtia, Meherpur, Chuadanga, Jhenaidah, Jessore, Barisal, and Bhola (Fig. 1). Out of a total 101,660 ha of cultivated wheat in those eight districts, an estimated 15 % were affected by wheat blast.

The severity of wheat blast and associated yield losses varied among districts. The highest percentage of infected wheat fields was observed in Meherpur (70 %) followed by Chuadanga (44 %), Jessore (37 %), Jhenaidah (8 %), Bhola (5 %), Kushtia (2 %), Barisal (1 %), and Pabna (0.2 %) (Fig. 1). Yield losses in different affected districts varied. The highest average yield loss was recorded in Jhenaidah (51 %) followed by Chuadanga (36 %), Meherpur (30 %), Jessore (25 %), Barisal (21 %), Pabna (18 %), Kushtia (10 %), and Bhola (5 %). Although the average yield loss was lower than 51 % across districts, yield losses in individual fields were as high as 100 %. Importantly, 100 % of government-owned Bangladesh Agricultural Development Corporation (BADC) seed multiplication farms in the affected districts (ca. 355 ha) were completely cleared by burning to destroy pathogen inocula by decision of the Ministry of Agriculture (see <https://www.youtube.com/watch?v=EmL5YM0kl0k>). Farmer wheat fields that were severely affected (~100 %) were also burned.

### Wheat blast symptoms in the field

To examine disease symptoms in affected wheat fields, we collected samples from the affected districts. Major symptoms associated with the epidemic included completely or partially bleached (dead) spikes similar to symptoms reported for Brazilian wheat blast epidemics [21, 22] and symptoms reported from Bangladesh in 2016 [23]. The pathogen attacked the base or upper part of the rachis, severely affecting spikelet formation above the point of infection. Complete or partial bleaching of the spike above the point of infection with either no grain or shriveled grain was common in all areas affected by wheat blast (Fig. 2a–c). We commonly observed bleached heads with traces of gray, indicative of

fungal sporulation at the point of infection (arrows in Fig. 2a–c and g). In severely infected fields, we also found typical eye-shaped necrotic disease lesions with gray centers in the leaves of some wheat plants (Fig. 2d) [21, 28]. Head infections during the flowering stage resulted in no grain production (Fig. 2g), whereas infection at the grain filling stage resulted in small, shriveled, light in weight, and discolored (pale) grains (Fig. 2e, f) [22].

To determine whether the spike and leaf symptoms on wheat were associated with infection by blast fungi (*Pyricularia* and related genera from the *Pyriculariaceae* sensu; see Klaubauf et al. [8]), we examined infected plant samples using a light microscope. A hallmark of blast fungi is the production of asexual spores that have a specific morphology consisting of three-celled pyriform conidia [8]. Microscopic analyses revealed that gray colored lesions observed on both spikes and leaves carried large numbers of three-celled pyriform conidia from aerial conidiophores (Fig. 2h). This indicates that the fungus present in these lesions belongs to the *Pyriculariaceae*, consistent with a previous report [22]. However, molecular taxonomy tools are needed to determine the species identity.

### Strains isolated from infected wheat samples cause symptoms of wheat blast on artificially inoculated wheat

To confirm whether the fungus found on infected wheat leaves is able to cause the observed symptoms, we isolated ten strains (BTJP 3-1, BTJP 3-2, BTJP 3-3, BTJP 4-1, BTJP 4-2, BTJP 4-3, BTJP 4-4, BTJP 4-5, BTJP 4-6, and BTJP 4-7) using a single-conidia isolation method (Fig. 3a). On potato dextrose agar (PDA) plates, the predominant morphology of the isolates was gray to white aerial mycelia with an olive or brown center (Fig. 3b). After 14–21 days of inoculation, the center of the culture became black (Fig. 3c). Artificial inoculation of wheat seedling leaves using conidia of two isolates (BTJP 3-1 and BTJP 4-1) produced characteristic symptoms five days after inoculation (Fig. 3d–h). Initially, a diamond-shaped, water-soaked lesion in green leaves was observed (Fig. 3d), which gradually turned into an eye-shaped lesion, with a tan or gray colored center (Fig. 3e, f). At a later stage, the spots enlarged, spread to entire leaves, and killed the leaves (Fig. 3g, h). No difference in symptoms was observed on wheat seedlings of the cultivars Shatabdi and Prodip and between the two isolates (BTJP 3-1 and BTJP 4-1). Similar disease symptoms and sporulation were observed on leaves of artificially inoculated goosegrass (*Eleusine indica*) (Fig. 3k) and barley (*Hordeum vulgare*) (Fig. 3l). Terminal infection stages were characterized by a massive production of hyaline to pale gray, pyriform, and asexual conidia on aerial conidiophores. Conidia formation was observed on all infected wheat (*Triticum aestivum*), barley (*H.*



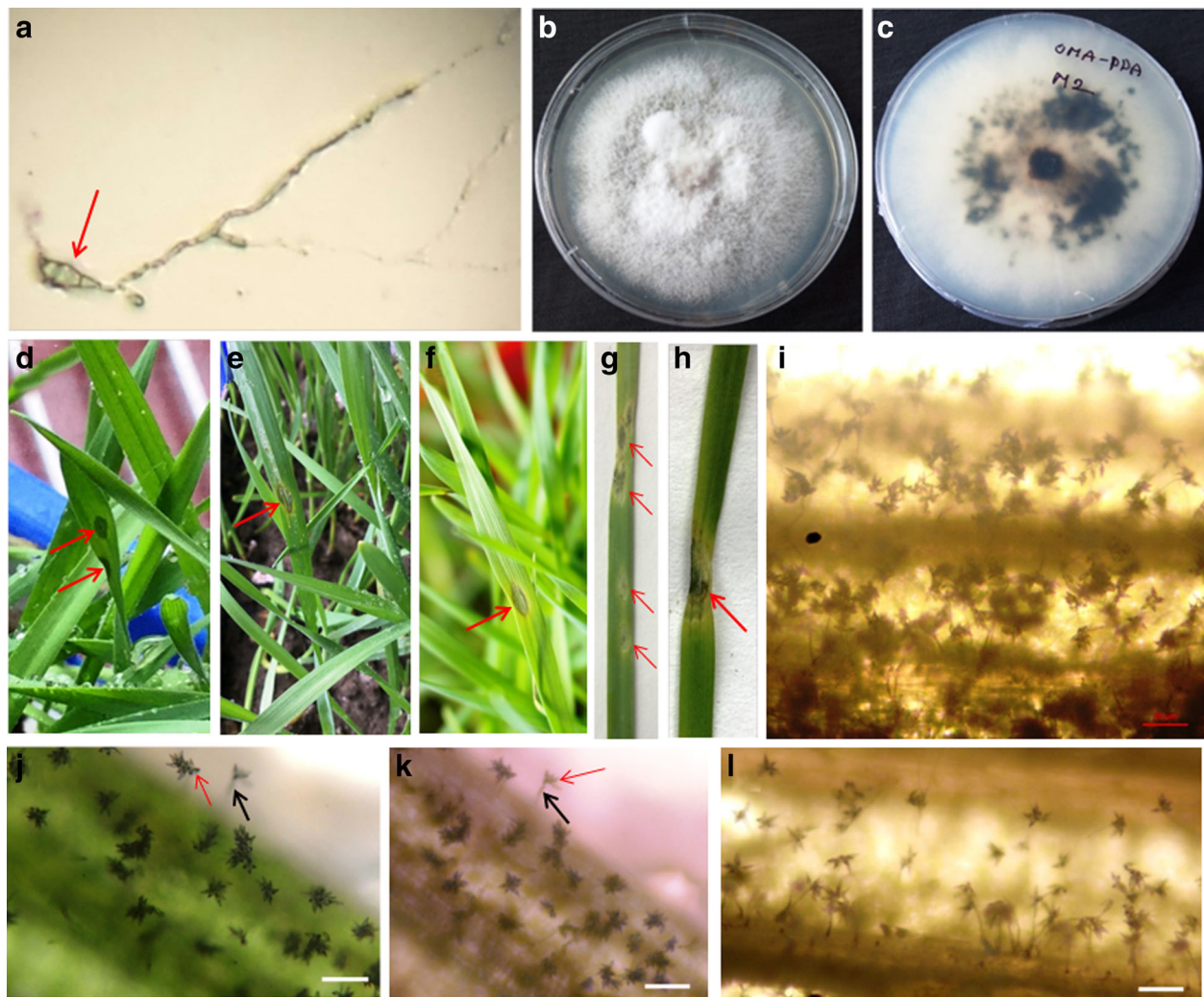
**Fig. 2** Symptoms of blast disease in spikes, leaves, and seeds of wheat in a farmer's field in Jhenaidah in Bangladesh, and a micrograph showing two conidia of *Magnaporthe oryzae*. **a** A completely bleached wheat spike with traces of gray from blast sporulation at the neck (arrow) of the spike. **b** Complete bleaching of a wheat spike above the point (arrow) of infection. **c** Two completely bleached spikes with traces of gray (upper arrow) and a lesion (lower arrow) from blast sporulation at the base. **d** Typical eye-shaped lesion (arrow) and dark gray spots on a severely diseased wheat leaf. **e** Mild blast disease-affected slightly shriveled wheat seeds. **f** Severe blast-affected shriveled and pale wheat seeds. **g** A severely infected rachis with dark gray blast sporulation at the neck (arrow) and severely damaged spikelets. **h** Micrograph of two conidia isolated from the infected spike of wheat. Scale bars in **e** and **f** = 1 cm and in **h** = 10  $\mu$ m

*vulgare*), and goosegrass (*E. indica*) leaves (Fig. 3i–l). Under the same conditions, no visible symptoms or sporulation of conidia were observed microscopically on leaves of artificially inoculated rice (*Oryza sativa* cv. BRRIdhan 49; data not shown). These results are consistent with those of Castroagudin et al. [29] showing that wheat-infecting *M. oryzae* can infect seedlings of barley but is largely asymptomatic on rice. The pathogenicity of wheat blast on *E. indica* is also consistent with reports that *E. indica* is a major alternate host in South America [30, 31]. *E. indica* is also a common weed in the highlands of Bangladesh and may similarly serve as a alternate host of wheat blast. Understanding the role of alternate hosts in disease cycles and

epidemics of wheat blast will be key in formulating effective disease management strategies.

#### Transcriptome sequencing of wheat leaf samples from Bangladeshi fields

We used field pathogenomics [26] to identify which blast fungus species was present in infected wheat fields in Bangladesh. We collected samples of both symptomatic and asymptomatic leaves from wheat fields in different regions of Bangladesh, including Meherpur and Jhenaidah districts, and extracted total RNA from four pairs of symptomatic (samples 2, 5, 7, and 12) and asymptomatic samples (samples F2, F5, F7, and F12) (Additional file 1: Table S1). We



**Fig. 3** Reinoculation of seedlings with fungal strains isolated from infected wheat seeds. Germinated conidia, growth of mycelia, infection, and sporulation of strains used to artificially inoculate wheat, barley, and goosegrass. **a** A germinated three-celled pyriform conidia (arrow) with hyphal growth on water agar medium. **b, c** Culture of isolate BTJP 3-1 on PDA plate; upper (left) and reverse side (right). **d** Photograph showing a diamond-shaped, water-soaked lesion (initial stage of infection symptom, upper arrow) on a green wheat seedling leaf five days after conidial inoculation. **e, f** Development of an eye-shaped lesion with a gray center (arrows in **e** and **f**) on wheat leaves. **g, h** A gradual progression of symptoms (arrows) on wheat leaves. **i-l** Light micrographs showing massive conidia production (red arrow) on aerial conidiophores (black arrow) on artificially infected leaves of wheat cultivars Prodig (**i**) and Shatabdi (**j**), goosegrass (**k**), and barley (**l**). Photographs were taken by a camera attached to a microscope at 100× magnification. Scale bars in **j, k**, and **l** indicate 50 μm

prepared and sequenced RNA-seq libraries using Illumina technology, yielding 68.8 to 125.8 million 101-bp pair-end reads with an average insert size of 419 bp. Next, following data trimming, we aligned high-quality reads to both the *M. oryzae* wheat blast fungus BR32 and wheat genomes [19, 32]. Sequence reads from all samples with disease symptoms aligned to the BR32 genome, ranging from 0.5–18.6 % of the total reads (Fig. 4a). By contrast, only a minor proportion of the reads from the asymptomatic samples aligned to the BR32 genome (range: 0.003–0.037 %, Fig. 4a–c). Between 37.7 % and 86.5 % of total reads

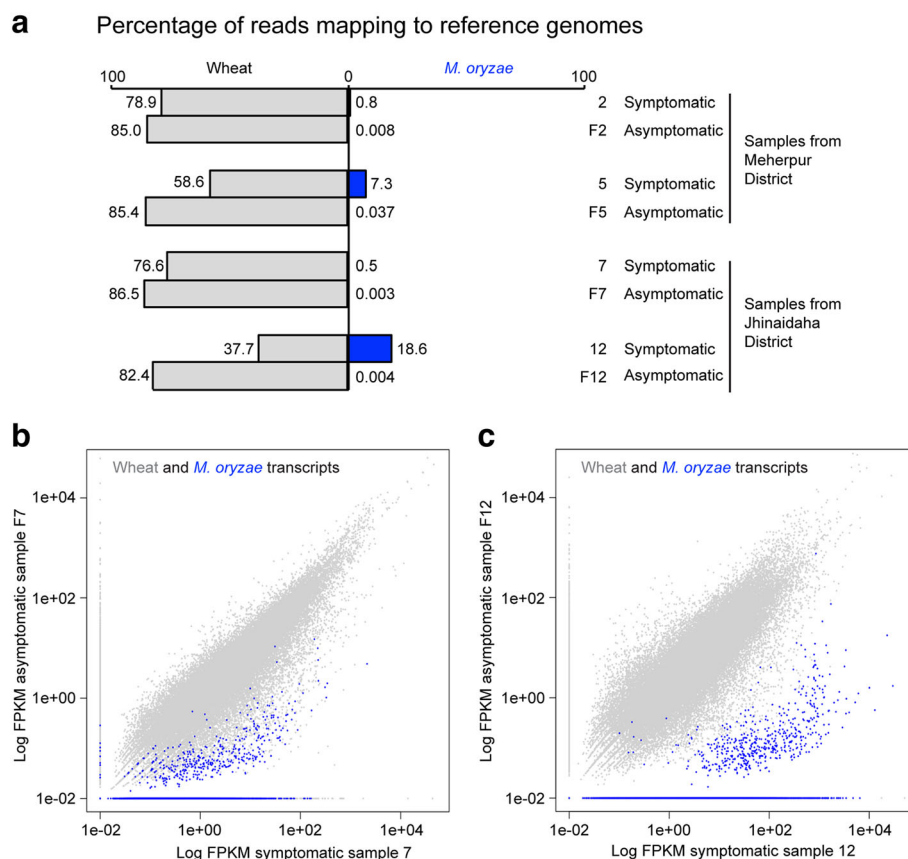
aligned to the wheat genome sequence (Fig. 4a). We obtained similar numbers when considering the reads aligning to *M. oryzae* and wheat transcriptomes (Additional file 2: Table S2). Variation in percentage mapped reads of host and fungal transcripts among symptomatic samples is most likely explained by differences in the disease severity and infection stage among field collected leaves. The finding that on average 6.8 % reads per sampled transcriptome aligned to the wheat blast genome BR32 indicated that *M. oryzae* is present in symptomatic (infected) wheat samples from Bangladesh.

### Bangladesh wheat blast outbreak was likely caused by a wheat-infecting South American lineage of *M. oryzae*

We used phylogenomic approaches to determine how related the fungal pathogen detected in wheat leaf samples from Bangladesh is to *M. oryzae* lineages infecting cereals and grasses. We also performed population genomics analyses to gain insight into the geographic origin of these Bangladeshi isolates using a set of sequences from wheat-infecting *M. oryzae* isolates collected in Brazil over the last 25 years. We first determined the taxonomic affiliation and phylogenetic position of wheat-infecting Bangladeshi samples. To this aim, we extracted predicted transcript sequences from the assembled genomic sequences of 20 *M. oryzae* strains isolated from infected rice (*O. sativa*), wheat (*T. aestivum*), foxtail millet (*Setaria* spp.), *Eleusine* spp., *Lolium* spp., and *Eragrostis* spp. [19] (this study; see Additional file 1: Table S1 for full details). We identified 2193 groups of sequences with orthologous relationships across the 20 reference transcriptomes and the two Bangladeshi

isolates that had the largest number of genes represented in their transcriptomic sequences. We aligned orthologous transcripts, processed alignments, and inferred a maximum likelihood genealogy based on the concatenated sequences using RAxML [33]. The Bangladeshi isolates clustered with high bootstrap support (>90 %) with wheat-infecting isolates of *M. oryzae* (Fig. 5a), indicating that the emergence of wheat blast in Bangladesh was caused by isolates belonging to the known *M. oryzae* wheat-infecting lineage, and not by an unknown Pyriculariaceae species or a novel *M. oryzae* lineage.

Given that the Bangladesh outbreak was caused by isolates related to known wheat-infecting lineages of *M. oryzae*, our next step was to infer genealogical relationships between Bangladeshi and South American wheat blast samples. We performed population genomics analyses using transcriptomic single nucleotide polymorphisms (SNPs) identified by aligning sequence reads to the *M. oryzae* reference genome 70-15 [34]. We



**Fig. 4** Transcriptome sequencing of infected leaves from farmer fields reveals *Magnaporthe oryzae* transcripts in symptomatic samples. **a** Comparison of sequence read mapping data from the four sample pairs to the genomes of wheat blast fungus *M. oryzae* BR32 (in blue) and wheat (light gray). **b, c** Scatter plots of fragments per kilobase of transcript per million (FPKM) values from sample pair 7-F7 (**b**) and 12-F12 (**c**) aligned to the combined transcriptomes of wheat and *M. oryzae* BR32. Transcripts from wheat (100,344) are shown in light gray and transcripts from *M. oryzae* BR32 (14,349) are shown in blue

included all four symptomatic samples from Bangladesh and a diverse collection of 23 *M. oryzae* wheat-infecting isolates sampled from Brazil, the main wheat growing country affected by wheat blast (Additional file 1: Table S1). As the wheat blast isolates from Brazil were sequenced from genomic DNA, we restricted the analyses to transcriptomic SNPs genotyped at high confidence in the symptomatic Bangladeshi sample 12, retaining a total of 15,871 SNPs. Since the reproductive mode of wheat blast populations can be mixed, including both sexual and asexual reproduction [18], we chose to build a Neighbor-Net network that takes into account potential recombination among genotypes. The network analyses identified small groups of near-clonal genotypes (e.g., isolates 12.1.205 and 12.1.032i), whereas all other isolates appeared genetically distinct and displayed reticulate evolution. The Bangladesh outbreak isolates grouped as a near-clonal genotype that was most closely related to a group of Brazilian wheat-infecting isolates from Minas Gerais, São Paulo, Brasília, and Goiás (strains PY0925, 12.1.053i, 12.1.117, and 12.1.037, respectively). Systematic analyses of recent wheat-infecting isolates from Brazil and neighboring countries will be needed to ascertain the most likely infection route from South America. Also, additional phylogenomic work, based on deeper sampling of the diversity of grass-infecting *M. oryzae*, will provide further insight into the genealogical relationships among host-specific lineages and the timing of lineage splitting/merging events.

## Conclusion

Our rapid open source genomic surveillance approach has revealed the precise identity of the infectious

Bangladeshi fungus as the known wheat-infecting *M. oryzae* lineage and indicated that it most likely originated from South America. This finding calls for intensive monitoring and surveillance of the wheat blast pathogen to limit its further spread outside South America and Bangladesh. In addition, our finding indicates that the knowledge acquired to manage wheat blast in Brazil using disease resistant cultivars [35–37] and fungicides [38, 39] can be directly applied to the Bangladeshi epidemic.

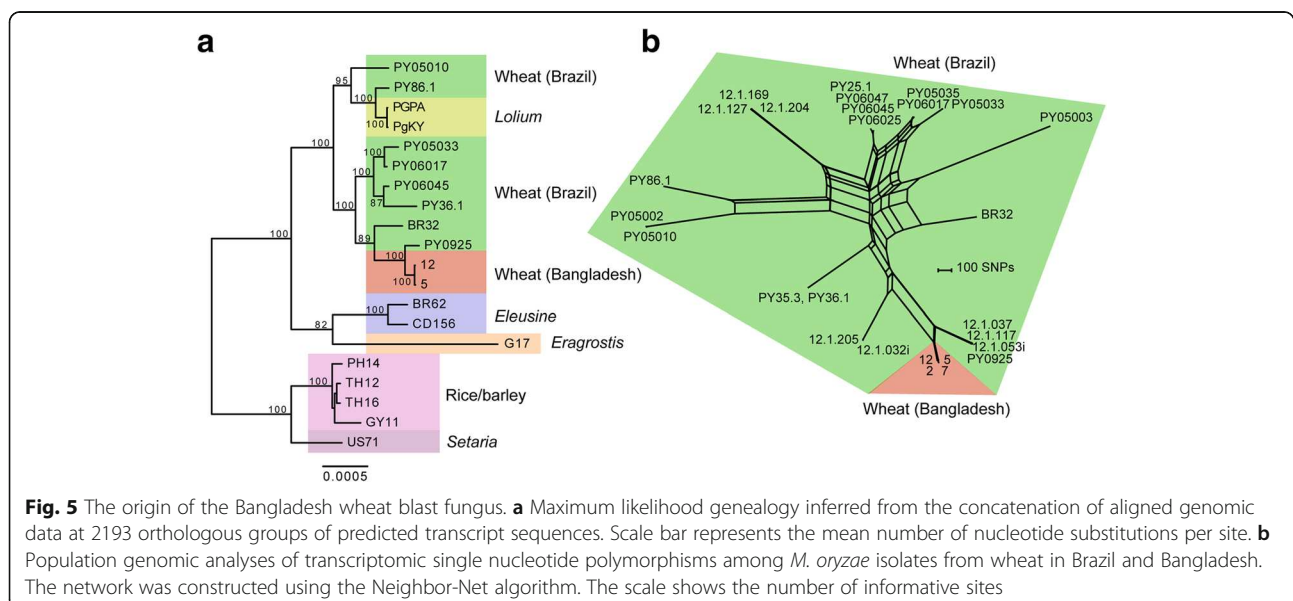
## Methods

### Field data

The dates of first incidence of disease and areas of wheat cultivation and blast-infected fields in different districts of Bangladesh were obtained from the Department of Agricultural Extension (DAE) of Bangladesh. To verify the data obtained by the DAE on the severity of the wheat blast epidemic, a second data set on yield loss was directly collected from the farmers ( $n = 100$ ) of the most severely infected wheat blast district, Meherpur, through face-to-face interviews of randomly selected farmers after harvesting the crop. Among 15,471 ha with wheat blast in Bangladesh, the disease incidence in the Meherpur district alone involved 9640 ha, approximately 62 % of the total wheat blast area in the country.

### Isolation of wheat blast strains from infected seeds and inoculation of wheat seedlings

Fungal strains were isolated from infected and shriveled wheat seeds collected from the farmers of the Jhenaidah district of Bangladesh. Infected wheat seeds were surface sterilized successively with 95 % ethanol followed by



10 % sodium hypochlorite and 95 % ethanol [28]. The seeds were kept in a Petri dish laid with sterilized filter paper maintaining abundant moisture. Samples were checked every day under the microscope to monitor the production of conidia and conidiophores on wheat seeds. After 3 days of incubation at room temperature (ca. 30 °C), abundant conidia on aerial conidiophores were observed. Seeds with conidia were transferred to an Eppendorf tube containing 1 ml of sterilized water and vortexed for 1 min at 700 rpm. A conidial suspension was separated from the seed, diluted 100-fold with sterilized water, and then spread on 1.5 % water agar medium and incubated for 2 days [40]. Each plate was observed under a microscope at 100× magnification to identify germinated single conidia with hyphal growth. Germinated conidia were transferred on an agar block and placed on a PDA plate for 7 days of incubation. Repeated cultures were established from the tip of growing hyphae for further purification. For the production of conidia, hyphal blocks from a fully grown plate were transferred into water agar containing sterilized wheat leaves 40 g L<sup>-1</sup>, streptomycin 50 mg L<sup>-1</sup>, tetracycline 50 mg L<sup>-1</sup>, and chloramphenicol 50 mg L<sup>-1</sup> [28]. Conidia were harvested from 14-day-old culture plates flooded with sterilized water containing 0.01 % Tween 20 and gently scraped with an inoculation loop to dislodge conidia from conidiophores [41]. The conidial suspension was then filtered through two layers of cheesecloth and adjusted to 5 × 10<sup>3</sup> conidia per ml. Seedlings of two wheat varieties, Prodip and Shatabdi, were grown from surface sterilized seeds in autoclaved soils and in plastic trays. Seedlings were sprayed with a conidial suspension of two purified isolates, BTJP 3-1 and BTJP 4-1, until full wet. Non-inoculated controls were sprayed with a solution of sterilized water and Tween 20. Inoculated plants were immediately covered with sterilized transparent polyethylene bags to maintain humidity. Plants were kept under natural light conditions at 30–32 °C for the development of blast symptoms. For the production of conidia on aerial conidiophores on symptomatic wheat leaves, excised plant leaves were placed on wet filter paper in a Petri dish. Sterilized pipette tips were used to support the diseased tissues so that they were in contact with wet filter paper to prevent desiccation. The Petri dish was covered with a lid and placed at room temperature (30–32 °C). After incubation for 24 h, infected leaves were examined under a light microscope to confirm sporulation and then photographed. Strains were reisolated and preserved on dried filter paper at 4 °C for further examination. Seedlings of barley (*H. vulgare*), rice (*O. sativa*), and goosegrass (*E. indica*) were also inoculated by conidia produced by the strains BTJP 3-1 and BTJP 4-1 following the protocols described for wheat seedlings.

### Transcriptome sequencing of field collected samples

Leaf blades from wheat displaying blast symptoms and those with no symptoms were harvested from the same fields, cut into thin strips (approximately 0.5 × 1.0 cm), and immediately stored in 1 ml RNAlater solution (ThermoFisher Scientific, Basingstoke, UK). Total RNA was extracted from the samples using the RNeasy Plant Mini kit (Qiagen, Manchester, UK) following the manufacturer's instructions. The amount and the quality of RNA samples were determined using the Agilent 2100 Bioanalyzer (Agilent Technologies, Edinburgh, UK). cDNA libraries were prepared using the Illumina TruSeq RNA Sample Preparation Kit (Illumina, Cambridge, UK). Library quality was confirmed before sequencing using the Agilent 2100 Bioanalyzer (Agilent Technologies, Edinburgh, UK). The libraries were sequenced on the Illumina HiSeq 2500 system (Illumina) operated by The Genome Analysis Centre, UK, producing 101-bp paired-end reads. The reads were mapped to the genomes of wheat and wheat blast strain *M. oryzae* BR32 using the TopHat software, version 2.0.11 [42], and fragments per kilobase of transcript per million (FPKM) values of mapped reads to the transcriptomes were calculated using Cufflinks, version 2.1.1 [43]. De novo assembly of transcriptomes was performed using sequence reads from each sample with Trinity software, version 2.06 [44]. Within days of sequencing, the data were made public on Open Wheat Blast (<http://www.wheatblast.net>). A timeline from sample collection to population and phylogenomic analysis is provided on the Open Wheat Blast website (<http://s620715531.websitehome.co.uk/owb/?p=485>).

### Population and phylogenomic analyses

We used predicted transcript sequences extracted from the assembled genomic sequences of 20 *M. oryzae* isolates collected on infected leaves of rice (*O. sativa*), wheat (*T. aestivum*), foxtail millets (*Setaria* spp.), *Eleusine* spp., *Lolium* spp., and *Eragrostis* spp. (Additional file 1: Table S1) [18, 19, 45–47]. We used Proteinortho [48] to identify groups of sequences with orthologous relationships across the 20 reference transcriptomes and each of the Bangladeshi transcriptomes. We identified 983, 3250, 501, and 3413 groups of orthologous sequences across the reference transcriptomes from samples 2, 5, 7, and 12, respectively. Only the two Bangladeshi isolates that had the largest number of orthologous sequences were retained for further analysis (samples 5 and 12). The consensus set of orthologous transcripts across the 22 transcriptomes included 2193 groups of sequences. We aligned orthologous groups of sequences using MACSE, with default parameters [49].

We removed codons with missing data or alignment gaps. We excluded transcript alignments for which

>0.5 % of sites corresponded to singletons or doubletons exclusive to the Bangladeshi isolates, suggesting erroneous assignment of predicted sequences to *M. oryzae* BR32 transcripts or sequencing errors in transcript assemblies. We also excluded the regions corresponding to the first 30 and last 16 codons and treated ambiguities as missing data. Maximum likelihood phylogenetic inference was performed on the concatenated sequence of 1923 orthologs (2,676,792 bp in total), using the GTRGAMMA model in RAxML version 8.1.17 with 100 bootstrap replicates [33]. The maximum likelihood genealogy was mid-point rooted along the longest branch, which was the branch connecting the foxtail millet- and rice-infecting lineages to other lineages.

For population genomic analyses, we identified transcriptomic SNPs based on short read alignments against the *M. oryzae* reference genome 70-15. We mapped quality-trimmed Illumina short read data generated from RNA using TopHat version 2.0.14 [43]. For all completely sequenced genomes, we aligned quality-trimmed Illumina short read data against the reference genome 70-15 using Bowtie version 2.2.6 [50]. For all strains collected from the Bangladesh outbreak, transcriptomic sequences were aligned using TopHat version 2.0.14. We identified variants in the genomes of the different strains using the Genome Analysis Toolkit (GATK) version 3.5 from the Broad Institute [51]. We used a two-step variant calling according to the GATK best practice guidelines. We first called raw variants with local reassembly of read data using Haplotype caller. All raw variant calls were jointly genotyped using GenotypeGVCF. We used SelectVariants to subset the variant calls to contain only SNPs. Then, the SNPs were hard-filtered using the following criteria:  $QUAL \geq 5000.0$ ,  $QD \geq 5.0$ ,  $MQ \geq 20.0$ ,  $-2.0 \leq \text{ReadPosRankSum} \leq 2.0$ ,  $-2.0 \leq \text{MQRankSum}_{upper} \leq 2.0$ ,  $-2.0 \leq \text{BaseQRankSum} \leq 2.0$ . Furthermore, we only retained SNPs genotyped in at least 90 % of all strains and genotyped the Bangladeshi sample 12 (Additional file 1: Table S1). We used SplitsTree version 4.14.2 to generate a Neighbor-Net network from Brazilian and Bangladeshi wheat blast strains [52]. To build the network, we used uncorrected  $p$  distances calculated from the SNP supermatrix. The network was drawn based on equal angle splits.

## Additional files

**Additional file 1: Table S1.** Samples included in the phylogenomic and population genomic analyses. (XLSX 15 kb)

**Additional file 2: Table S2.** Short read coverage of *Magnaporthe oryzae* and wheat transcriptomes in Bangladeshi samples. (PDF 66 kb)

## Acknowledgements

We would like to thank the Director General of the Department of Agricultural Extension, Md. Shahidul Islam of Unnayan Dhara in Jhenaidah,

Md. Aminullah of BADC Nurnagar Farm in Chuadanga, and Md. Shabab Mehebab, East West University for their support during the collection of samples and data from the wheat fields. We also thank Dan MacLean, Emilie Chanclud, and members of the Kamoun Lab for their suggestions and the staff of the Biotechnology Biological Sciences Research Council (BBSRC) National Capability in Genomics at TGAC, including Christopher Wright, Helen Chapman, Harbans Marway, Tom Barker, and Jonathan Moore, for assistance with the sequencing. Authorizations for scientific activities related to this project are available, including 39131-3 from the Brazilian Ministry of Environment (MMA)/"Chico Mendes" Institute for Conservation of Biodiversity (ICMbio)/System for Authorization and Information in Biodiversity (ICMbio) for studying the evolution of *Pyricularia oryzae* from wheat, issued to VLC and PCC. This work was funded in part by the World Bank under HEQEP CP 2071 to MTI, a BBSRC fellowship in computational biology awarded to DGOS, the NBI Computing infrastructure for Science (CIS) group, Brazilian National Council for Scientific and Technological Development – CNPq (Pq-2, 307295/2015-0) and São Paulo Research Foundation – FAPESP (2014/25904-2, 2013/10655-4, and 2015/10453-8) research grants to VLC and PCC, and the Gatsby Charitable Foundation and BBSRC to JW and SK.

## Authors' contributions

MTI, JW, and SK conceived and coordinated the project, designed and performed data analyses, and wrote the paper. DGOS conceived and coordinated the project, designed and performed analyses, performed experiments, revised the paper, and/or provided scientific insight. DC and PG designed and performed analyses and wrote the paper. DMS, MGM, PCC, and NJT collected, processed, and contributed samples/data, revised the paper, and/or provided scientific insight. AP, PB, MSH, DRG, and MZS collected, processed, and contributed samples/data and performed experiments. MMR, MUS, VBS, JLN, ANJ, VLC, JTDAR, SR, TS, and DS collected, processed, and contributed samples/data. NC performed experiments. RK, EF, DT, MHL, and BAM revised the paper and/or provided scientific insight. All authors read and approved the final manuscript.

## Competing interests

The authors declare that they have no competing interests.

## Author details

<sup>1</sup>Department of Biotechnology, Bangabandhu Sheikh Mujibur Rahman Agricultural University, Gazipur 1706, Bangladesh. <sup>2</sup>Plant Pathology, Institute of Integrative Biology, ETH Zurich, 8092 Zurich, Switzerland. <sup>3</sup>INRA, UMR 385 Biologie et génétique des interactions plantes-pathogènes BGPI, Montpellier, France. <sup>4</sup>College of Life and Environmental Sciences, University of Exeter, Exeter EX4 4QD, UK. <sup>5</sup>Earlham Institute, Norwich Research Park, Norwich NR4 7UH, UK. <sup>6</sup>Argo-Environmental Remote Sensing and Modeling Lab, Bangladesh Agricultural Research Institute, Joydebpur 1701, Gazipur, Bangladesh. <sup>7</sup>Directorate of Grains Industry, Department of Agriculture and Food Western Australia (DAFWA), 3 Baron-Hay Court, South Perth, WA 6151, Australia. <sup>8</sup>Brazilian Agricultural Research Enterprise – EMBRAPA Wheat/Trigo, Passo Fundo, Rio Grande do Sul, Brazil. <sup>9</sup>Department of Crop Protection, Rural Engineering, and Soil Science, University of São Paulo State – UNESP, IlhaSolteira Campus, São Paulo, Brazil. <sup>10</sup>CIRAD, UMR 385 Biologie et génétique des interactions plantes-pathogènes BGPI, Montpellier, France. <sup>11</sup>The Sainsbury Laboratory, Norwich Research Park, Norwich NR4 7UH, UK. <sup>12</sup>Max Planck Institute for Plant Breeding Research, Carl-von-Linné-Weg 10, Cologne 50829, Germany. <sup>13</sup>INRA, UMR 1290 Biologie et Gestion des Risques en agriculture BIOGER, Thiverval-Grignon, France. <sup>14</sup>John Innes Centre, Norwich Research Park, Norwich NR4 7UH, UK.

Received: 8 July 2016 Accepted: 12 September 2016

Published online: 03 October 2016

## References

- Fisher MC, Henk DA, Briggs CJ, Brownstein JS, Madoff LC, McCraw SL, et al. Emerging fungal threats to animal, plant and ecosystem health. *Nature*. 2012;484:186–94.
- Pennisi E. Armed and dangerous. *Science*. 2010;327:804–5.
- Liu W, Liu J, Triplett L, Leach JE, Wang GL. Novel insights into rice innate immunity against bacterial and fungal pathogens. *Annu Rev Phytopathol*. 2014;52:213–41. doi:10.1146/annurev-phyto-102313-045926.

4. Igarashi S, Utiyama CM, Igarashi LC, Kazuma AH, Lopes RS. *Pyculariaemtrigo*. 1. Ocorrência de *Pycularia* sp. no estado do Paraná. Fitopatol Bras. 1986;11:351–2.
5. Goulart A, Paiva F, Mesquita N. Perdasentrigio (*Triticum aestivum*) causadas por *Pycularia oryzae*. Fitopatol Bras. 1992;17:115–7.
6. Goulart ACP, Sousa PG, Urashima AS. Damages in wheat caused by infection of *Pycularia grisea*. Summa Phytopathol. 2007;33:358–63. doi:10.1590/S010054052007000400007.
7. Kohli MM, Mehta YR, Guzman E, De Viedma L, Cubilla LE. *Pycularia* blast — a threat to wheat cultivation. Czech J Genet Plant Breed. 2011;47:S130–4.
8. Klaubauf S, Tharreau D, Fournier E, et al. Resolving the polyphyletic nature of *Pycularia* (Pyculariaceae). Stud Mycol. 2014;79:85–120.
9. Ou SH. Rice diseases. Kew, UK: Commonwealth Mycological Institute, CAB; 1985.
10. Kato H, Yamamoto M, Yamaguchi-Ozaki T, et al. Pathogenicity, mating ability and DNA restriction fragment length polymorphisms of *Pycularia* populations isolated from Gramineae, Bambusoideae and Zingiberaceae plants. J Gen Plant Pathol. 2000;66:30–47.
11. Urashima AS, Igarashi S, Kato H. Host range, mating type and fertility of *Pycularia grisea* from wheat in Brazil. Plant Disease. 1993;77:1211–6.
12. Tosa Y, Tamba H, Tanaka K, et al. Genetic analysis of host species specificity of *Magnaporthe oryzae* isolates from rice and wheat. Phytopathology. 2006;96:480–4.
13. Prabhu AS, Filippi MC, Castro N. Pathogenic variation among isolates of *Pycularia oryzae* infecting rice, wheat and grasses in Brazil. Trop Pest Manage. 1992;38:367–71. doi:10.1080/09670879209371729.
14. Urashima AS, Hashimoto Y, Le Don D, Kusaba M, Tosa Y, Nakayashiki H, Mayama S. Molecular analysis of the wheat blast population in Brazil with a homolog of retrotransposon MGR583. Jpn J Phytopathol. 1999;65:429–36. doi:10.3186/jjphytopath.65.429.
15. Farman ML. *Pycularia grisea* isolates causing gray leaf spot on perennial ryegrass (*Lolium perenne*) in the United States: relationship to *P. grisea* isolates from other host plants. Phytopathology. 2002;92:245–54. doi:10.1094/PHYTO.2002.92.3.245.
16. Faivre-Rampant O, Thomas J, Allegre M, Morel J-B, Tharreau D, Notteghem J-L, Lebrun M-H, Schaffrath U, Piffanelli P. Characterisation of the model system rice-*Magnaporthe* for the study of non-host resistance in cereals. New Phytol. 2008;180:899–910.
17. Tufan HA, McGrann GR, Magusin A, Morel JB, Miché L, Boyd LA. Wheat blast: histopathology and transcriptome reprogramming in response to adapted and non-adapted *Magnaporthe* isolates. New Phytol. 2009;184:473–84.
18. Maciel JLN, Ceresini PC, Castroagudin VL, Zala M, Kema GHJ, McDonald BA. Population structure and pathotype diversity of the wheat blast pathogen *Magnaporthe oryzae* 25 years after its emergence in Brazil. Phytopathology. 2014;104:95–107. doi:10.1094/PHYTO-11-12-0294-R.
19. Chiappello H, Mallet L, Guérin C, Aguileta G, Amselem J, Kroj T, et al. Deciphering genome content and evolutionary relationships of isolates from the fungus *Magnaporthe oryzae* attacking different host plants. Genome Biol Evol. 2015;7:2896–912.
20. Yoshida K, Saunders DG, Mitsuoka C, Natsume S, Kosugi S, Saitoh H, Inoue Y, Chuma I, Tosa Y, Cano LM, Kamoun S, Terauchi R. Host specialization of the blast fungus *Magnaporthe oryzae* is associated with dynamic gain and loss of genes linked to transposable elements. BMC Genomics. 2016;18:370.
21. Igarashi S. Update on wheat blast (*Pycularia oryzae*) in Brazil. In: Saunders D, editor. Proceedings of the International Conference – Wheat for the Nontraditional Warm Areas. Mexico DF, Mexico: CIMMYT; 1990. p. 480–3.
22. Urashima AS. Blast. In: Bockus WW, Bowden RL, Hunger RM, Morrill WL, Murray TD, Smiley RW, editors. Compendium of wheat diseases and pests. Saint Paul, MN: American Phytopathological Society; 2010. p. 22–3.
23. Malaker PK, Barma NC, Tewari TP, Collis WJ, Duveiller E, Singh PK, Joshi AK, Singh RP, Braun HJ, Peterson GL, Pedley KF, Farman ML, Valent B. First report of wheat blast caused by *Magnaporthe oryzae* pathotype *Triticum* in Bangladesh. Plant Disease. 2016; http://dx.doi.org/10.1094/PDIS-05-16-0666-PDN.
24. Callaway E. Devastating wheat fungus appears in Asia for first time. Nature 2016; 532:421–2. doi:10.1038/532421a.
25. Hossain A, da Silva JA T. Wheat production in Bangladesh: its future in the light of global warming. AOB Plants. 2013;5:pls042. doi:10.1093/aobpla/pls042.
26. Hubbard A, Lewis CM, Yoshida K, Ramirez-Gonzalez R, de Vallaviella-Pope C, Thomas J, Kamoun S, Bayles R, Uauy C, Saunders DGO. Field pathogenomics reveals the emergence of a diverse wheat yellow rust population. Genome Biol. 2015;16:23. doi:10.1186/s13059-015-0590-8.
27. Derevnina L, Michelson RW. Wheat rusts never sleep but neither do sequencers: will pathogenomics transform the way plant diseases are managed? Genome Biol. 2015;16:44. doi:10.1186/s13059-015-0615-3.
28. Cruz CD, Kiyuna J, Bockus WW, Todd TC, Stack JP, Valent B. *Magnaporthe oryzae* conidia on basal wheat leaves as a potential source of wheat blast inoculum. Plant Pathol. 2015;64:1491–8.
29. Castroagudin VL, Moreira SI, Pereira DAS, Moreira SS, Brunner PC, Maciel JLN, Crous PW, McDonald B, Alves E, Ceresini PC. Wheat blast disease caused by *Pycularia graminis-tritici* sp. nov. Persoonia. 2016;37:199–216. doi:10.3767/003158516x692149.
30. Urashima AS, Lavorent NA, Goulart CP, Mehta YR. Resistance spectra of wheat cultivars and virulence diversity of *Magnaporthe grisea* isolates in Brazil. Fitopatologia Brasileira. 2004;29:511–8.
31. Urashima AS, Martins D, Bueno CRNC, Favaro DB, Arruda MA, Mehta YR. Triticale and barley: new hosts of *Magnaporthe grisea* in São Paulo, Brazil — relationship with blast of rice and wheat. In: Kawasaki S, editor. Rice blast. Berlin: Springer; 2004. p. 251–60.
32. International Wheat Genome Sequencing Consortium (IWGSC). A chromosome-based draft sequence of the hexaploid bread wheat (*Triticum aestivum*) genome. Science. 2014;345:1251788. doi:10.1126/science.1251788.
33. Stamatakis A. RAxML version 8: a tool for phylogenetic analysis and post-analysis of large phylogenies. Bioinformatics. 2014;30:1312–3. doi:10.1093/bioinformatics/btu033.
34. Dean RA, Talbot NJ, Ebbole DJ, Farman ML, Mitchell TK, Orbach MJ, et al. The genome sequence of the rice blast fungus *Magnaporthe grisea*. Nature. 2005;434:980–6.
35. Anh VL, Anh NT, Tagle AG, Vy TT, Inoue Y, Takumi S, Chuma I, Tosa Y. Rmg8, a new gene for resistance to *Triticum* isolates of *Pycularia oryzae* in hexaploid wheat. Phytopathology. 2015;105:1568–72.
36. Cruz CD, Peterson GL, Bockus WW, Kankana P, Dubcovsky J, Jordan KW, Akhunov E, Chumley F, Baldelomar FD, Valent B. The 2N5 translocation from *Aegilops ventricosa* confers resistance to the *Triticum* pathotype of *Magnaporthe oryzae*. Crop Sci. 2016;56:1–11. doi:10.2135/cropsci2015.07.0410.
37. Ha X, Koopmann B, von Tiedemann A. Wheat blast and Fusarium head blight display contrasting interaction patterns on ears of wheat genotypes differing in resistance. Phytopathology. 2016;106:270–81.
38. Pagani AP, Dianese AC, Café Filho AC. Management of wheat blast with synthetic fungicides, partial resistance and silicate and phosphite minerals. Phys Chem Chem Phys. 2014;42:609–17. doi:10.1007/s12600-014-0401-x.
39. Castroagudin VL, Ceresini PC, Oliveira SC, et al. Resistance to Qol fungicides is widespread in Brazilian populations of the wheat blast pathogen *Magnaporthe oryzae*. Phytopathology. 2015;104:284–94.
40. Ho WC, Ko WH. A simple method for obtaining single-spore isolates of fungi. Bot Bull Acad Sin. 1997;38:41–4.
41. Partridge-Metz S, Chandra A. Culture media influence on vegetative growth and in vitro conidia production of *Magnaporthe oryzae*. J Cell Plant Sci. 2011;2:9–11.
42. Kim D, Perteau G, Trapnell C, Pimentel H, Kelley R, Salzberg SL. TopHat2: accurate alignment of transcriptomes in the presence of insertions, deletions and gene fusions. Genome Biol. 2013;14:R36. doi:10.1186/gb-2013-14-4-r36.
43. Trapnell C, Roberts A, Goff L, Perteau G, Kim D, Kelley DR, et al. Differential gene and transcript expression analysis of RNA-seq experiments with TopHat and cufflinks. Nat Protoc. 2012;7:562–78.
44. Grabherr MG, Haas BJ, Yassour M, Levin JZ, Thompson DA, Amit I, Adiconis X, Fan L, Raychowdhury R, Zeng Q, Chen Z, Mauceli E, Hacohen N, Gnirke A, Rhind N, di Palma F, Birren BW, Nusbaum C, Lindblad-Toh K, Friedman N, Regev A. Full-length transcriptome assembly from RNA-seq data without a reference genome. Nature Biotech. 2011;29:644–52.
45. Dobinson KF, Harris RE, Hamer JE. Grasshopper, a long terminal repeat (LTR) retroelement in the phytopathogenic fungus *Magnaporthe grisea*. Mol Plant-Microbe Interact. 1993;6:114–26.
46. Kang S, Sweigard JA, Valent B. The PWL host specificity gene family in the blast fungus *Magnaporthe grisea*. Mol Plant-Microbe Interact. 1995;8:939–48.
47. Tosa Y, Uddin W, Viji G, Kang S, Mayama S. Comparative genetic analysis of *Magnaporthe oryzae* isolates causing gray leaf spot of perennial ryegrass turf in the United States and Japan. Plant Dis. 2007;91:517–24.
48. Lechner M, Findeiss S, Steiner L, Marz M, Stadler PF, Prohaska SJ. Proteinortho: detection of (co-)orthologs in large-scale analysis. BMC Bioinformatics. 2011;12:124. doi:10.1186/1471-2105-12-124.

49. Ranwez V, Harispe S, Delsuc F, Douzery EJ. MACSE: Multiple Alignment of Coding SEquences accounting for frameshifts and stop codons. *PLoS One*. 2011;6, e22594. doi:10.1371/journal.pone.0022594.
50. Langmead B, Salzberg SL. Fast gapped-read alignment with Bowtie 2. *Nat Methods*. 2012;9:357–9. doi:10.1038/nmeth.1923.
51. DePristo MA, Banks E, Poplin R, Garimella KV, Maguire JR, Hartl C, et al. A framework for variation discovery and genotyping using next-generation DNA sequencing data. *Nat Genet*. 2011;43:491–8. doi:10.1038/ng.806.
52. Huson DH, Bryant D. Application of phylogenetic networks in evolutionary studies. *Mol Biol Evol*. 2006;23:254–67.

Submit your next manuscript to BioMed Central and we will help you at every step:

- We accept pre-submission inquiries
- Our selector tool helps you to find the most relevant journal
- We provide round the clock customer support
- Convenient online submission
- Thorough peer review
- Inclusion in PubMed and all major indexing services
- Maximum visibility for your research

Submit your manuscript at  
[www.biomedcentral.com/submit](http://www.biomedcentral.com/submit)

