



Since January 2020 Elsevier has created a COVID-19 resource centre with free information in English and Mandarin on the novel coronavirus COVID-19. The COVID-19 resource centre is hosted on Elsevier Connect, the company's public news and information website.

Elsevier hereby grants permission to make all its COVID-19-related research that is available on the COVID-19 resource centre - including this research content - immediately available in PubMed Central and other publicly funded repositories, such as the WHO COVID database with rights for unrestricted research re-use and analyses in any form or by any means with acknowledgement of the original source. These permissions are granted for free by Elsevier for as long as the COVID-19 resource centre remains active.



# ACE2 and TMPRSS2 are expressed on the human ocular surface, suggesting susceptibility to SARS-CoV-2 infection

Lingli Zhou<sup>a,c</sup>, Zhenhua Xu<sup>a</sup>, Gianni M. Castiglione<sup>a</sup>, Uri S. Soiberman<sup>a</sup>, Charles G. Eberhart<sup>a,b,\*</sup>, Elia J. Duh<sup>a,\*</sup>

<sup>a</sup> Department of Ophthalmology, Johns Hopkins University School of Medicine, Baltimore, MD, USA

<sup>b</sup> Department of Pathology, Johns Hopkins University School of Medicine, USA

<sup>c</sup> State Key Laboratory of Ophthalmology, Zhongshan Ophthalmic Center, Sun Yat-sen University, Guangzhou, China

## ARTICLE INFO

### Keywords:

Conjunctiva  
Cornea  
Ocular surface  
Human  
ACE2  
SARS-CoV-2  
COVID-19

## ABSTRACT

**Purpose:** Conjunctival signs and symptoms are observed in a subset of patients with COVID-19, and SARS-CoV-2 has been detected in tears, raising concerns regarding the eye both as a portal of entry and carrier of the virus. The purpose of this study was to determine whether ocular surface cells possess the key factors required for cellular susceptibility to SARS-CoV-2 entry/infection.

**Methods:** We analyzed human post-mortem eyes as well as surgical specimens for the expression of ACE2 (the receptor for SARS-CoV-2) and TMPRSS2, a cell surface-associated protease that facilitates viral entry following binding of the viral spike protein to ACE2.

**Results:** Across all eye specimens, immunohistochemical analysis revealed expression of ACE2 in the conjunctiva, limbus, and cornea, with especially prominent staining in the superficial conjunctival and corneal epithelial surface. Surgical conjunctival specimens also showed expression of ACE2 in the conjunctival epithelium, especially prominent in the superficial epithelium, as well as weak or focal expression in the substantia propria. All eye and conjunctival specimens also expressed TMPRSS2. Finally, Western blot analysis of protein lysates from human corneal epithelium obtained during refractive surgery confirmed expression of ACE2 and TMPRSS2.

**Conclusions:** Together, these results suggest that ocular surface cells including conjunctiva are susceptible to infection by SARS-CoV-2, and could therefore serve as a portal of entry as well as a reservoir for person-to-person transmission of this virus. This highlights the importance of safety practices including face masks and ocular contact precautions in preventing the spread of COVID-19 disease.

## 1. Introduction

With the COVID-19 pandemic, there has been heightened awareness and interest in the routes of viral infection, given both the public health and medical implications. Conjunctival abnormalities are a known manifestation of COVID-19 [1]. In addition, various investigators have reported the presence of virus in tear and conjunctival swab specimens in a subset of patients with COVID-19 [2,3]. Consequently, there has been extensive speculation regarding the ocular surface as a possible site of virus entry and also as a source of contagious infection [4,5]. The ocular surface could potentially serve as a portal of entry through exposure to respiratory droplets or hand-eye contact. Similarly, the ocular surface could serve as an important reservoir of virus that could result in transmission to other individuals. In addition to issues related to

transmission, ocular surface susceptibility to infection has implications for ophthalmic manifestations of COVID-19.

Recent studies of the respiratory tract have confirmed the critical elements for cellular susceptibility to infection by SARS-CoV-2. Notably, nasal epithelial cells and bronchial secretory cells are known to possess the key factors for cellular susceptibility to SARS-CoV-2 [6,7]. ACE2 serves as the key cell-surface receptor for SARS-CoV-2 [8–12] that binds the viral spike protein [10–14], and TMPRSS2 is known to be an important cell surface-associated protease that allows viral entry following binding of the viral spike protein to ACE2 [9,15]. However, whether ocular surface cells possess these key factors for cellular susceptibility to viral infection remains unclear.

In the current study, we analyzed both human post-mortem whole eyes and surgical conjunctiva specimens using immunohistochemistry

\* Corresponding authors. Robert H. and Clarice Smith Building, 400 N. Broadway, Baltimore, MD, 21231, USA.

E-mail addresses: [ceberha@jhmi.edu](mailto:ceberha@jhmi.edu) (C.G. Eberhart), [eduh@jhmi.edu](mailto:eduh@jhmi.edu) (E.J. Duh).

<https://doi.org/10.1016/j.jtos.2020.06.007>

Received 9 May 2020; Received in revised form 24 May 2020; Accepted 11 June 2020

Available online 13 June 2020

1542-0124/ © 2020 Elsevier Inc. All rights reserved.

in order to determine both expression and localization of these key viral susceptibility factors on the ocular surface. Across all specimens, we found expression of ACE2 in the conjunctiva, limbus, and cornea. All eye and conjunctival specimens also expressed TMPRSS2. Immunoblotting using the same antibodies further confirmed expression of ACE2 in protein extracts from the human ocular surface. Together, these results indicate that ocular surface cells including conjunctiva and cornea are indeed susceptible to infection by SARS-CoV-2, highlighting the importance of safety practices protecting this region [4].

## 2. Methods

### 2.1. Patients and specimens

Corneal epithelial samples were obtained from healthy myopic patients undergoing photorefractive keratectomy for the treatment of mild to moderate myopia or myopic astigmatism. Topical proparacaine and 5% betadine solution were applied to the ocular surface. The central 9 mm of the corneal epithelium was removed with sterile cellulose sponges and immediately placed in RNeasy lysis tubes (Thermo Fisher, MA, USA). The samples were kept at  $-80^{\circ}\text{C}$  until protein extraction using the PARIS™ kit (Thermo Fisher, Waltham, MA, USA). Protein concentration was quantified by BCA assay (Thermo Fisher). Ten post-mortem human globes were collected from five non-diabetic controls lacking ocular disease, and from five diabetic individuals with diabetic retinopathy. Post-mortem intervals are indicated in Table 1. Five surgical conjunctival specimens were obtained during routine eye surgery as described [16]. Both surgical and autopsy tissues were immediately fixed in 10% formalin after removal, processed routinely in the clinical laboratory, and embedded in paraffin. Clinical details pertaining to study patients are described in Table 1. Research followed the tenets of the Declaration of Helsinki. Study protocols were approved by the Institutional Review Board at the Johns Hopkins School of Medicine, and study participants underwent informed consent by the treating surgeon.

### 2.2. Western blot analysis

Proteins from corneal epithelial samples were extracted using the PARIS kit (Thermo Fisher). Total protein concentration was measured using DC protein assay kit (500–0112, Bio-Rad). 20  $\mu\text{g}$  protein from cell lysates was subjected to 7.5% SDS-PAGE and transferred to Hybond ECL nitrocellulose membrane (Amersham Biosciences, Piscataway, NJ). After incubation with appropriate primary and secondary antibodies, the blots were detected with the Supersignal Femto Chemiluminescent Substrates (ThermoFisher, MA, USA). For re-probing, blots were washed in Western blot stripping buffer (Thermo Fisher) for 15 min before proceeding with new blotting. Anti-ACE2 (ab108252, 1:1000) and anti-TMPRSS2 (ab92323, 1:1000) antibodies were purchased from Abcam.  $\beta$ -actin detected by its antibody (#4970, 1:2000, Cell Signaling) was used for loading control. Horseradish peroxidase-tagged secondary anti-rabbit IgG was from Cell Signaling (#7074, 1:2000).

### 2.3. Immunohistochemistry

Formalin-fixed paraffin-embedded tissue sections 5  $\mu\text{m}$  thick were incubated in a 60° oven for 1 h and hydrated through a series steps of xylene and ethanol baths to water. Deparaffinized sections were boiled in antigen retrieval solution (100X citrate buffer, pH 6.0, Abcam, Cambridge, MA) for 10 min and cooled down for 20 min. Slides were then washed with hot tap water for 1 min and PBS twice for 3 min each time. After blocking in 5% normal goat serum diluted in PBS, the sections were incubated with anti-ACE2 antibody (ab108252, 1: 100, Abcam, Cambridge, MA), anti-TMPRSS2 antibody (ab92323, 1: 1000, Abcam) and the isotype- and concentration-matched normal IgG control (ab172730, Abcam) overnight at 4  $^{\circ}\text{C}$ . After 3 washes with PBST

(PBS plus 0.1% Tween-20), the sections were incubated with the secondary biotinylated goat anti-rabbit IgG (1:2000) for 1 h at room temperature. The sections were then detected by alkaline phosphatase detection system (Vectastain ABC-AP kit, Vector laboratories, Burlingame, CA) and a blue reaction product was produced by incubating sections with alkaline substrate (Vector blue AP substrate kit III, Vector laboratories) for 20–40 min. The sections were also counterstained with nuclear fast red (Vector laboratories) and mounted with mounting medium (H-5501, Vector laboratories), and examined under a light microscope.

### 2.4. Grading of immunohistochemistry

ACE2 and TMPRSS2 expression levels in the ocular surface tissues were scored based on the relative intensity of ACE2 and TMPRSS2 immunoreactivity. The intensity was graded by two independent observers in a masked fashion. The grading scores for intensity were: 0, no staining (similar to non-immune IgG -incubated control staining); 1, mild staining; 2, moderate staining and 3, strong staining. For this grading, immunohistochemistry was performed at the same time for all post-mortem globe, or surgical conjunctiva sections. A subset of the autopsy and surgical cases were stained a second time in parallel with lung as a positive control tissue, with similar results. For some post-mortem globe specimens, conjunctiva, limbus, and/or cornea were not present in the stained sections, as indicated in Table 1.

## 3. Results

### 3.1. ACE2 and TMPRSS2 are expressed in the human corneal epithelium

Several studies have demonstrated ACE2 expression in epithelial cells of tissues including lung, ileum and kidney. In order to determine whether ACE2 is also expressed in corneal epithelial cells, we performed Western blot analysis of corneal epithelium obtained from two patients during photorefractive keratectomy. Western blot analysis clearly showed that ACE2 protein was expressed in both corneal epithelial lysates as a single 110 kDa band (Fig. 1), which represents the glycosylated form of ACE2 [17]. TMPRSS2 is known to be a key protein for priming the SARS-CoV-2 Spike protein for host membrane fusion to enable cell entry. Western blot data similarly showed the expression of TMPRSS2 protein in the human corneal epithelial samples (Fig. 1). Taken together, ACE2 and TMPRSS2 protein were both expressed in corneal epithelial cells.

### 3.2. Expression and localization of ACE2 in cornea and limbus

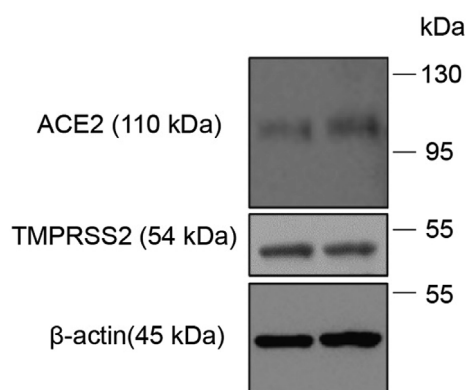
Using the same antibody, we further confirmed the expression of ACE2 and investigated its localization in cornea by immunohistochemical staining of ten post-mortem eye specimens (Table 1). Consistent with our Western blot analysis, ACE2 staining was positive in corneal epithelium, with mild to moderate staining in both basal cells and flattened ones in the most superficial layer (Fig. 2A and B). ACE2 staining was largely absent in the corneal stroma (Fig. 2A). There was ACE2 expression in the corneal endothelium as well, with staining intensity roughly equivalent to corneal epithelium (Fig. 2C). The corneal limbus was also positive for ACE2 staining (Fig. 2E), with particularly prominent staining in the superficial epithelial cells (Fig. 2F). In some cases, ACE2 staining intensity in the limbus was stronger than the adjacent corneal epithelium.

As an additional positive control, we analyzed lung tissue with the same ACE2 antibody. Consistent with published reports, ACE2 was expressed in both a subset of lung epithelial cells, and many vascular endothelial cells (Fig. 2H and I) [18,19]. Both of these cell types showed moderate to strong staining. For both corneal and lung sections, immunohistochemical staining with isotype IgG isotype antibody staining was performed, as negative controls (Fig. 2D, G and J).

**Table 1**  
Demographic information and grading score for postmortem eyes.

Case number	Age	Sex	Diabetes Status	Autopsy interval	Tissue	Score	
						ACE2	TMPRSS2
C1	74	M	ND	18 h	Corneal Epithelium	1	2
					Corneal Endothelium	2	3
					Limbus	1	2
					Conjunctiva	1	2
C2	81	F	ND	*	Corneal Epithelium	/	3
					Corneal Endothelium	/	3
					Limbus	/	/
					Conjunctiva	/	/
C3	44	M	ND	56 h	Corneal Epithelium	1	3
					Corneal Endothelium	1	3
					Limbus	1	3
					Conjunctiva	2	3
C4	80	M	ND	17 h	Corneal Epithelium	2	1
					Corneal Endothelium	1	2
					Limbus	2	1
					Conjunctiva	2	1
C5	62	M	ND	3 h	Corneal Epithelium	2	2
					Corneal Endothelium	1	2
					Limbus	2	2
					Conjunctiva	2	2
C6	60	F	NPDR	7 h	Corneal Epithelium	/	/
					Corneal Endothelium	1	3
					Limbus	1	3
					Conjunctiva	2	3
C7	60	M	NPDR	53 h	Corneal Epithelium	/	/
					Corneal Endothelium	1	/
					Limbus	3	/
					Conjunctiva	3	3
C8	62	F	NPDR	65 h	Corneal Epithelium	1	3
					Corneal Endothelium	1	3
					Limbus	1	3
					Conjunctiva	2	3
C9	68	F	NPDR	37 h	Corneal Epithelium	1	2
					Corneal Endothelium	1	2
					Limbus	3	2
					Conjunctiva	3	2
C10	87	M	NPDR	57 h	Corneal Epithelium	/	3
					Corneal Endothelium	/	2
					Limbus	/	3
					Conjunctiva	3	2

ND = non-diabetic; NPDR = diabetes with nonproliferative diabetic retinopathy. “/” = tissue not present in stained section; “\*” = time of death unknown.



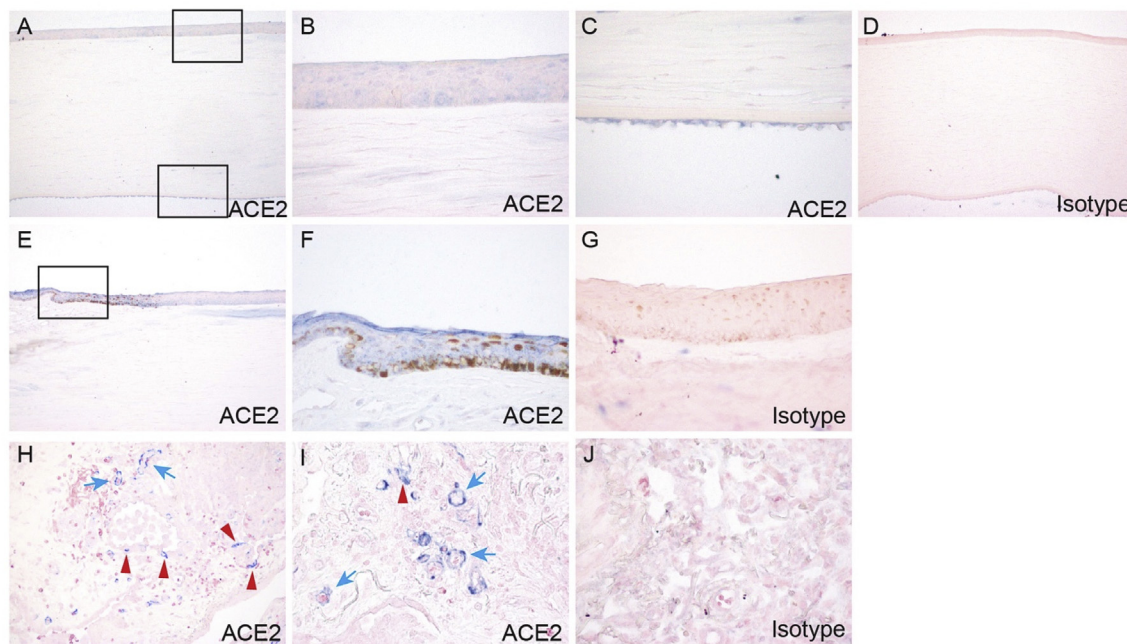
**Fig. 1. ACE2 and TMPRSS2 protein expression in human corneal epithelium.** Tissue lysates were prepared from corneal epithelial cell samples collected from two patients and analyzed by Western blot, using antibodies against ACE2 or TMPRSS2. Beta-actin was used as the loading control.

### 3.3. Expression and localization of ACE2 in conjunctiva

The conjunctiva occupies the majority of the ocular surface and has been speculated to represent a significant target for SARS-CoV-2 infection. As shown in Fig. 3, ACE2 was indeed expressed in conjunctival

epithelium. In many specimens, ACE2 staining was especially prominent in the most superficial epithelial cells (Fig. 3A and B), while in others a mixture of superficial and basal epithelial cells were stained (Fig. 3C and D). Goblet cells were largely negative (Fig. 3D, arrows). In terms of subcellular localization, ACE2 was mainly detected in cell membranes and the cytoplasm, with no nuclear staining. Beneath the epithelium, there was very little or no ACE2 staining in the substantia propria, and unlike the lung, vascular endothelial cells were negative (Fig. 3A, arrow). Among all globe specimens examined, moderate to strong ACE2 expression was most frequently identified (Table 1), and the distribution of staining was similar.

As a complementary study to the post-mortem globe analysis, we also performed immunohistochemical analysis of surgical conjunctival specimens (Table 2). ACE2 expression was positive across all five specimens, and the expression pattern was similar to what we observed in post-mortem eye specimens (Fig. 4A–E). ACE2 was most strongly expressed in apical conjunctival epithelium, with variable expression in more basal cells, and weak or focal expression in the substantia propria (Fig. 4A–E). Goblet cells in epithelium were negative for ACE2 staining (Fig. 4C), as were vascular endothelium. We also found ACE2 staining was positive in conjunctival invaginations and pseudoglands of Henle (Fig. 4D and E). Immunohistochemical staining with isotype IgG isotype antibody staining was performed, as negative control (Fig. 4F).



**Fig. 2. Expression and localization of ACE2 in cornea and limbus.** Post-mortem human eye sections were processed for immunohistochemistry with rabbit anti-ACE2 antibody. ACE2 expression was analyzed in cornea (A–C), limbus (E–F), and lung (H–I). Boxed region in (A) is shown at higher magnification in (B, C). Boxed region in (E) is shown at higher magnification in (F). Lung epithelium and vascular endothelium are indicated by red and blue arrow respectively. Immunohistochemistry with isotype- and concentration-matched normal IgG control was performed (D, G, J).

### 3.4. Expression and localization of TMPRSS2 in cornea and limbus

We next examined the expression and localization of TMPRSS2 in corneas of the post-mortem eyes by immunohistochemical staining. In cornea, TMPRSS2 uniformly exhibited very strong staining in both epithelium and endothelium (Fig. 5A–C). In contrast to ACE2, in corneal epithelium TMPRSS2 was expressed in all layers, including superficial flattened cells, middle wing cells, and deep basal cells. TMPRSS2 staining was also weakly positive in some keratocytes of corneal stroma. In the limbus, TMPRSS2 exhibited intense staining in the multi-layered epithelium (Fig. 5E and F). As a positive control, we analyzed lung tissue with the same TMPRSS2 antibody. TMPRSS2 showed positive staining in a broader range of lung cells as compared to ACE2 (Fig. 5H). For both corneal and lung sections, immunohistochemical staining with isotype IgG isotype antibody staining was performed, as negative controls (Fig. 5D, G and J).

### 3.5. Expression and localization of TMPRSS2 in conjunctiva

In conjunctiva from post-mortem eye specimens, TMPRSS2 was expressed throughout the whole epithelial layer (Fig. 6A–F), in contrast to ACE2 staining which was more prominent in the apical epithelium. In some specimens, TMPRSS2 showed stronger staining in basal cells compared with other layers of conjunctival epithelium (Fig. 6E and F). Similar to ACE2, TMPRSS2 staining was negative in goblet cells (Fig. 6D). In the corneal stroma, TMPRSS2 showed mild staining in fibroblasts and vascular endothelium (Fig. 6A).

As a complementary study to the post-mortem globe analysis, we also performed immunohistochemical studies of surgical conjunctival specimens (Table 2). In all five surgical conjunctiva specimens, TMPRSS2 staining was positive throughout the epithelium (Fig. 7), with a similar staining pattern as compared with conjunctiva from post-mortem eye specimens.

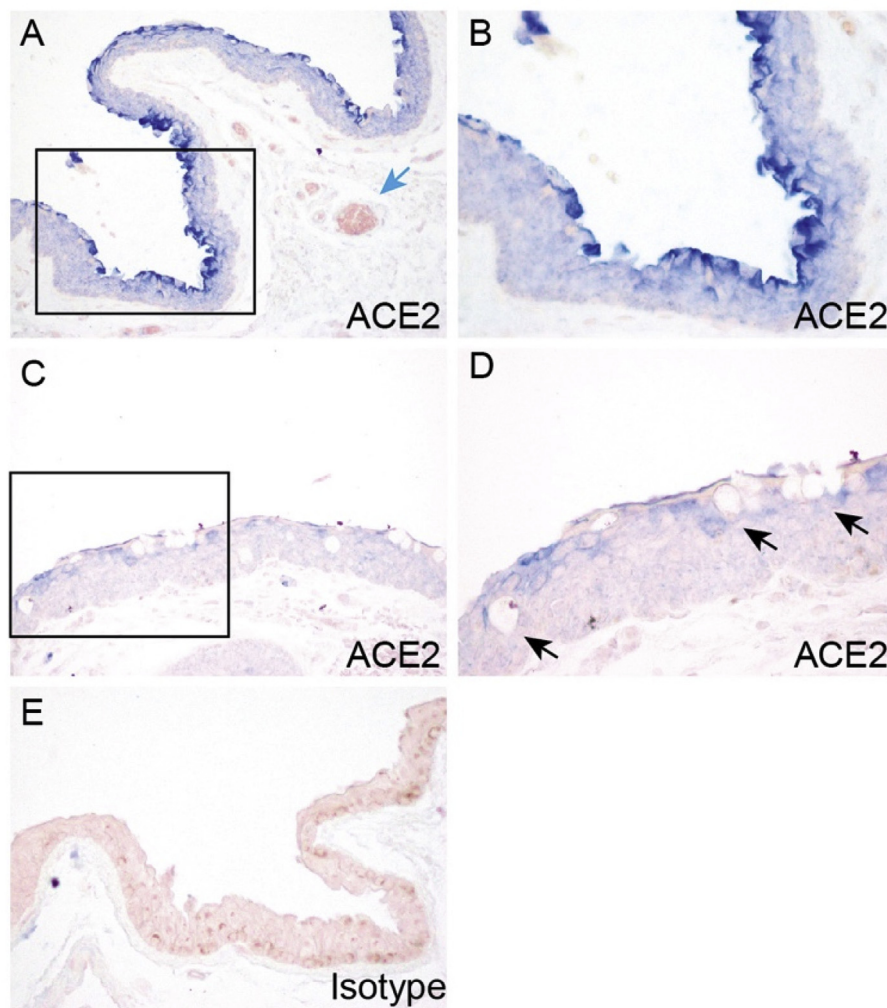
### 3.6. Grading of ACE2 and TMPRSS2 expression in epithelium on the ocular surface

As an additional analysis, we graded the staining intensities of ACE2 and TMPRSS2 on the ocular surface from 10 post-mortem eye specimens with particular attention to their expression in epithelium. For some post-mortem globe specimens, conjunctiva, limbus, and/or cornea were not retained for some stained sections. As shown in Table 1, ACE2 was expressed in the epithelium of cornea, limbus, and conjunctiva in all intact specimens to varying degrees. Overall, ACE2 exhibited much stronger staining in conjunctival epithelium than the epithelium from cornea and limbus. TMPRSS2 exhibited consistent strong staining in the epithelial layers of cornea, limbus, and conjunctiva in all specimens. ACE2 and TMPRSS2 both were expressed in the corneal endothelium from all 10 specimens. TMPRSS2 exhibited more intensive staining compared to ACE2. We further graded the staining intensities of ACE2 and TMPRSS2 in surgical conjunctiva specimens (Table 2). In comparison to post-mortem globe sections, surgical conjunctival specimens exhibited greater intensity of ACE2 staining. TMPRSS2 showed strong staining in most specimens, whether globe or surgical conjunctiva. In the globe specimens, diabetes status was not associated with obvious differences in either ACE2 or TMPRSS2 staining.

## 4. Discussion

An important aspect of the ongoing efforts to control and mitigate the impact of the COVID-19 pandemic has been to reduce the transmission of virus between individuals. In this respect, it is vital to gain greater understanding of the routes and modes of transmission, including the role of the ocular surface. Although the expression of the key cellular elements for susceptibility to infection, including the ACE2 receptor and the membrane-associated TMPRSS2, have been well-studied in cells of the respiratory tract, there have been minimal reports to date relating to the eye. An earlier immunohistochemical analysis documented the presence of other components of the renin-angiotensin system, particularly ACE and angiotensin II, in corneal and conjunctival epithelial cells [20]. A more recent study exploring multiple single-cell





**Fig. 3. Expression and localization of ACE2 in conjunctiva in post-mortem globe.** Paraffin-embedded human eye sections were processed for immunohistochemistry with rabbit anti-ACE2 antibody. ACE2 expression was analyzed in conjunctiva. Conjunctiva from two separate globes are depicted (A-B, C-D). For each individual globe, boxed region is shown at higher magnification. Arrows indicate vascular endothelium (A) and goblet cells (D). Immunohistochemistry with isotype- and concentration-matched normal IgG control was performed (E).

**Table 2**

Demographic information and grading score for surgical conjunctival specimens.

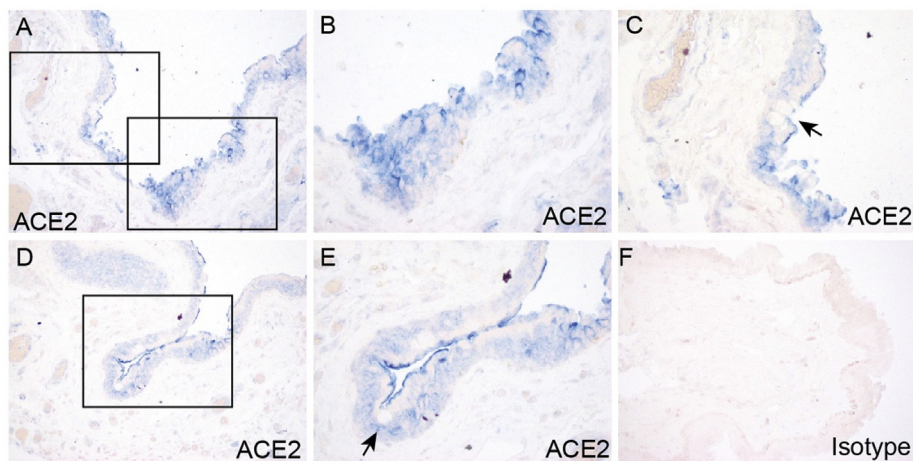
Case number	Age	Sex	Score	
			ACE2	TMPRSS2
SC 1	84	M	3	3
SC 2	41	M	2	3
SC 3	70	F	2	3
SC 4	41	M	1	2
SC 5	53	F	3	2

RNA sequencing (scRNA-seq) datasets from diverse tissues showed RNA expression of ACE2 and TMPRSS2 in various epithelia, including those of the ocular surface, but did not address protein expression [6]. In our study, we found ocular surface expression of both ACE2 and TMPRSS2 proteins across all human ocular specimens. Staining of ACE2 was especially prominent in the most superficial epithelium in both the conjunctiva and cornea. We also found TMPRSS2 in conjunctiva and cornea, with a more ubiquitous staining pattern as compared to ACE2. While the relatively diffuse and robust staining of TMPRSS2 suggests that at least a subset of ocular surface epithelial cells express both

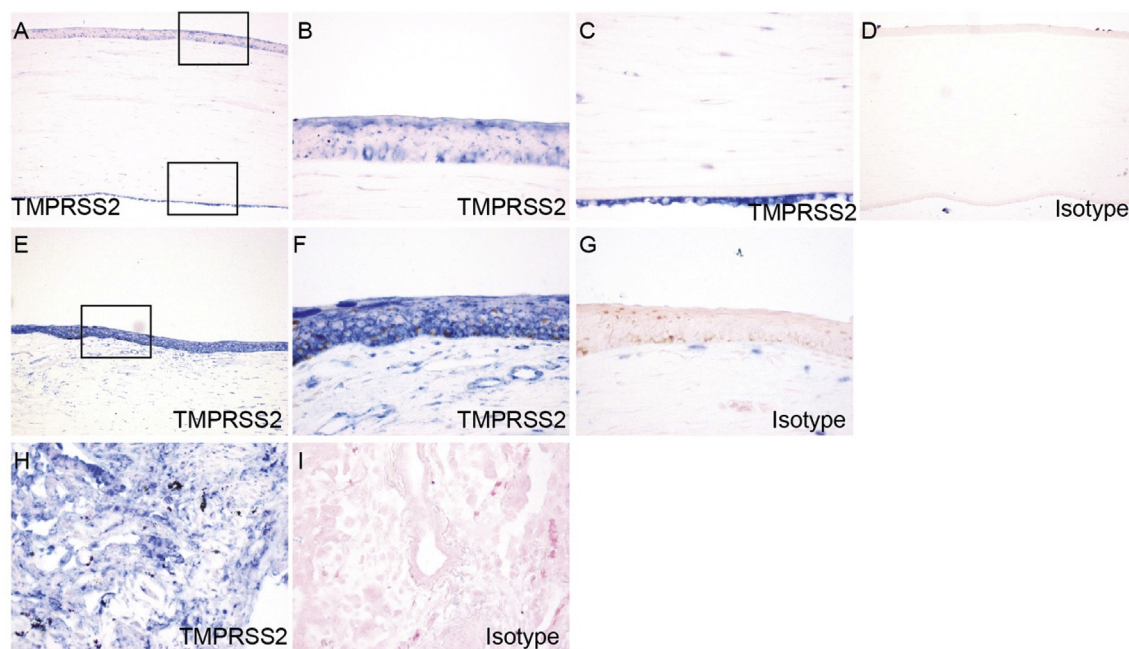
proteins, definitive analysis will require double immunofluorescent staining. Overall, these results suggest that the ocular surface is indeed susceptible to infection by SARS-CoV-2. The prominent expression of ACE2 on the most superficial corneal and conjunctival epithelium, the site of greatest exposure, is particularly notable.

Although our study suggests susceptibility of the ocular surface to SARS-CoV-2 infection, it is still notable that overt conjunctivitis is relatively infrequent in patients with COVID-19. In future investigations, it will be necessary to determine the reasons for this. Potential factors influencing ocular surface infection include the degree of exposure of the ocular surface to an adequate viral load in an individual, the requirement for other cellular factors that might affect susceptibility to infection and viral replication, and a strong immune cell-mediated clearance of virus in the eye. In addition, the ocular surface and its associated lymphoid tissues are known to contain multiple mechanisms, including immune-mediated responses, for attenuating inflammation [21].

Several clinical studies have reported the presence of SARS-CoV-2 in tear specimens from individuals with COVID-19. There has been discordance in reports regarding the proportion of COVID-19 patients with presence of virus in ocular specimens, possibly relating to factors including sensitivity of tests, type of ocular specimen and timing, type of specimen obtained, and timing of specimen procurement during disease



**Fig. 4. Expression and localization of ACE2 in surgical conjunctival specimens.** Paraffin-embedded human surgical conjunctival sections were analyzed by immunohistochemistry with rabbit anti-ACE2 antibody. Boxed regions in (A) are shown at higher magnification in (B) and (C). Boxed region in (D) is shown at higher magnification in (E). Arrows indicate goblet cells (C, E). Immunohistochemistry with isotype- and concentration-matched normal IgG control was performed (F).



**Fig. 5. Expression and localization of TMPRSS2 in cornea and limbus.** Paraffin-embedded human eye sections were processed for immunohistochemistry with rabbit anti-TMPRSS2 antibody. ACE2 expression was analyzed in cornea (A–C), limbus (E–F), and lung (H). Boxed region in (A) is shown at higher magnification in (B, C). Boxed region in (E) is shown at higher magnification in (F). Immunohistochemistry with isotype- and concentration-matched normal IgG control was performed (D, G, I).

progression in patients [22]. Studies have also indicated the variable presentations of COVID-19 disease. For instance, conjunctivitis is occasionally the initial clinical presentation of COVID-19 [23]. In addition, presence of virus in ocular swabs have indicated presence of virus in the eye as long as 27 days after initial symptoms, even with concomitant absence of virus in nasal swabs [24]. Although viral infection of ocular cells has not yet been reported in patients, a recent report found SARS-CoV-2 can infect conjunctiva in an ex-vivo culture system [25]. Our results may offer additional insights regarding the role of the ocular surface in COVID-19 transmission, suggesting that the ocular surface may serve as a significant reservoir for virus.

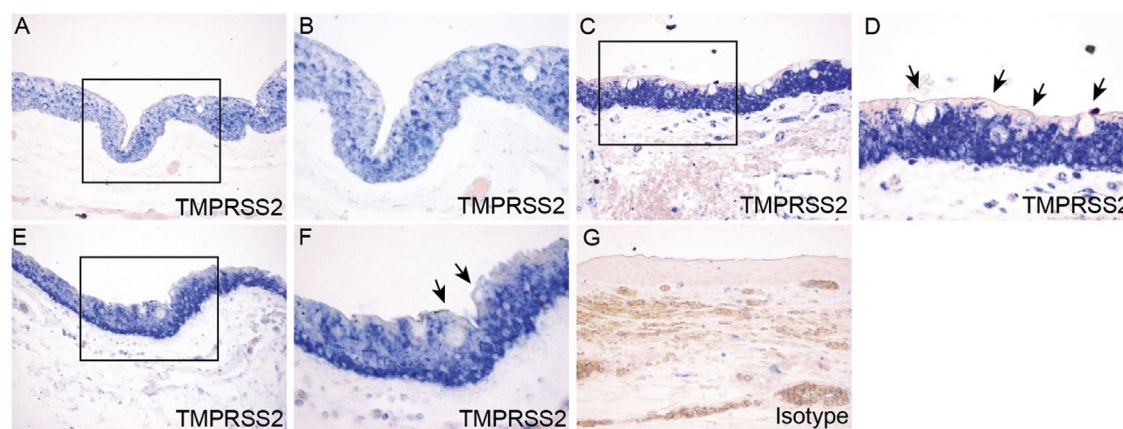
A very recent study also investigated ACE2 expression in human conjunctiva. Strikingly, in contrast to our study, this report did not find evidence of significant conjunctival ACE2 expression [26]. The explanation for the contrast in our findings is unclear, but might include methodological differences in the immunohistochemistry procedure, quality of tissue specimens, and differences in the antibodies used. In our study, we corroborated IHC studies of ACE2 and TMPRSS2

expression with Western blot analysis using the same antibodies as for IHC. Of note, IHC studies using IgG-isotype control demonstrated no staining for the respective proteins.

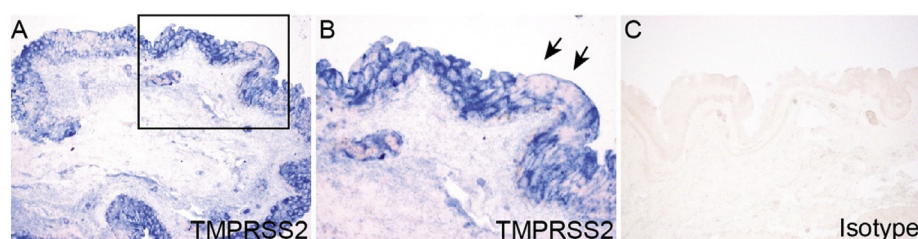
The susceptibility of the conjunctiva to infection with SARS-CoV-2 provides further context for published clinical studies. COVID-19 is often associated with conjunctival manifestations including conjunctivitis, which was present in about 30% of COVID-19 patients in one clinical study [1]. Primary viral infection of the conjunctiva could induce a local immune or inflammatory response resulting in these and other ophthalmic manifestations. In addition, our results support viral tropism for corneal epithelial cells and raises the possibility of corneal manifestations. Although conjunctival findings have been predominantly characterized in ocular COVID-19 disease, there have been some reports of corneal abnormalities [23].

In summary, the presence of ACE2 and TMPRSS2 in conjunctival and corneal epithelial cells supports the ocular surface as a secondary site of infection following respiratory tract, or possibly even as the initial portal of entry into an individual. Infection of ocular surface cells





**Fig. 6. Expression and localization of TMPRSS2 in conjunctiva in post-mortem globe.** Paraffin-embedded human eye sections were processed for immunohistochemistry with rabbit anti-TMPRSS2 antibody. ACE2 expression was analyzed in conjunctiva. Conjunctiva from three separate globes are depicted (A–B, C–D, E–F). For each individual globe, boxed region is shown at higher magnification. Arrows indicate goblet cells (D, F). Immunohistochemistry with isotype- and concentration-matched normal IgG control was performed (G).



**Fig. 7. Expression and localization of TMPRSS2 in surgical conjunctival specimens.** Paraffin-embedded human surgical conjunctival sections were analyzed by immunohistochemistry with rabbit anti-TMPRSS2 antibody. Boxed region in (A) is shown at higher magnification in (B). Arrows indicate goblet cells (B). Immunohistochemistry with isotype- and concentration-matched normal IgG control was performed (C).

could lead to the eye as being an important carrier, with ocular virus shedding constituting a mechanism for infection of other individuals. Our study therefore highlights the importance of safety practices in the general community to prevent infection and spread (hygiene, face masks) and need for extra caution among ophthalmologists [27].

#### Financial disclosures

No financial disclosures.

#### Declaration of competing interest

The authors declare no conflicts of interest.

#### Acknowledgments

This work was supported by research grants from the National Institutes of Health (EY022383 and EY022683; to E.J.D.) and Core Grant P30EY001765, Imaging and Microscopy Core Module. The authors thank B. Ghosh and V. Sidhaye (Johns Hopkins School of Public Health) for post-mortem lung sections.

#### References

- [1] Wu P, Duan F, Luo C, Liu Q, Qu X, Liang L, et al. Characteristics of ocular findings of patients with coronavirus disease 2019 (COVID-19) in Hubei Province, China. *JAMA Ophthalmol* 2020;138(5):575–8. <https://doi.org/10.1001/jamaophthalmol.2020.1291>.
- [2] Seah IYJ, Anderson DE, Kang AEZ, Wang L, Rao P, Young BE, et al. Assessing viral shedding and infectivity of tears in coronavirus disease 2019 (COVID-19) patients. *Ophthalmology* 2020. <https://doi.org/10.1016/j.ophtha.2020.03.026>. online ahead of print.
- [3] Zhang X, Chen X, Chen L, Deng C, Zou X, Liu W, et al. The evidence of SARS-CoV-2 infection on ocular surface. *Ocul Surf* 2020;18(3):360–2. <https://doi.org/10.1016/j.jtos.2020.03.010>.
- [4] Jun ISY, Hui KKO, Songbo PZ. Perspectives on coronavirus disease 2019 control measures for ophthalmology clinics based on a Singapore center experience. *JAMA Ophthalmol* 2020. <https://doi.org/10.1001/jamaophthalmol.2020.1288>.
- [5] Napoli PE, Nioi M, d'Aloja E, Fossarello M. The ocular surface and the coronavirus disease 2019: does a dual 'ocular route' exist? *J Clin Med* 2020;9(5):E1269. <https://doi.org/10.3390/jcm9051269>. online ahead of print.
- [6] Sungnak W, Huang N, Becavin C, Berg M, Queen R, Litvinukova M, et al. SARS-CoV-2 entry factors are highly expressed in nasal epithelial cells together with innate immune genes. *Nat Med* 2020;26(5):681–7. <https://doi.org/10.1038/s41591-020-0868-6>.
- [7] Lukassen S, Chua RL, Trefzer T, Kahn NC, Schneider MA, Muley T, et al. SARS-CoV-2 receptor binding ACE2 and TMPRSS2 are primarily expressed in bronchial transient secretory cells. *EMBO J* 2020;39(10):e105114. <https://doi.org/10.15252/embj.20105114>.
- [8] Zhou P, Yang XL, Wang XG, Hu B, Zhang L, Zhang W, et al. A pneumonia outbreak associated with a new coronavirus of probable bat origin. *Nature* 2020;579:270–3.
- [9] Hoffmann M, Kleine-Weber H, Schroeder S, Kruger N, Herrler T, Erichsen S, et al. SARS-CoV-2 cell entry depends on ACE2 and TMPRSS2 and is blocked by a clinically proven protease inhibitor. *Cell* 2020;181:271–280 e8.
- [10] Walls AC, Park YJ, Tortorici MA, Wall A, McGuire AT, Veesler D. Structure, function, and antigenicity of the SARS-CoV-2 spike glycoprotein. *Cell* 2020;181:281–292 e6.
- [11] Yan R, Zhang Y, Li Y, Xia L, Guo Y, Zhou Q. Structural basis for the recognition of SARS-CoV-2 by full-length human ACE2. *Science* 2020;367:1444–8.
- [12] Lan J, Ge J, Yu J, Shan S, Zhou H, Fan S, et al. Structure of the SARS-CoV-2 spike receptor-binding domain bound to the ACE2 receptor. *Nature* 2020;581(7807):215–20. <https://doi.org/10.1038/s41586-020-2180-5>.
- [13] Wang Q, Zhang Y, Wu L, Niu S, Song C, Zhang Z, et al. Structural and functional basis of SARS-CoV-2 entry by using human ACE2. *Cell* 2020;181(4):894–904.e9. <https://doi.org/10.1016/j.cell.2020.03.045>.
- [14] Shang J, Ye G, Shi K, Wan Y, Luo C, Aihara H, et al. Structural basis of receptor recognition by SARS-CoV-2. *Nature* 2020;581(7807):221–4. <https://doi.org/10.1038/s41586-020-2179-y>.
- [15] Matsuyama S, Nao N, Shirato K, Kawase M, Saito S, Takayama I, et al. Enhanced isolation of SARS-CoV-2 by TMPRSS2-expressing cells. *Proc Natl Acad Sci USA* 2020;117:7001–3.
- [16] Al-Swailem S, Xu Z, Wu L, Hartsock MJ, Yiu SC, Duh EJ. Induction of endothelial RAGE expression in pterygium. *Mol Vis* 2014;20:1740–8.
- [17] Li W, Moore MJ, Vasilieva N, Sui J, Wong SK, Berne MA, et al. Angiotensin-converting enzyme 2 is a functional receptor for the SARS coronavirus. *Nature* 2003;426:450–4.
- [18] Hamming I, Timens W, Bulthuis ML, Lely AT, Navis G, van Goor H. Tissue distribution of ACE2 protein, the functional receptor for SARS coronavirus. A first step in understanding SARS pathogenesis. *J Pathol* 2004;203:631–7.
- [19] He L, Ding Y, Zhang Q, Che X, He Y, Shen H, et al. Expression of elevated levels of pro-inflammatory cytokines in SARS-CoV-infected ACE2+ cells in SARS patients: relation to the acute lung injury and pathogenesis of SARS. *J Pathol*



- 2006;210:288–97.
- [20] Savaskan E, Loffler KU, Meier F, Muller-Spahn F, Flammer J, Meyer P. Immunohistochemical localization of angiotensin-converting enzyme, angiotensin II and AT1 receptor in human ocular tissues. *Ophthalmic Res* 2004;36:312–20.
- [21] Pflugfelder SC, Stern ME, Symposium P. Immunoregulation on the ocular surface: 2nd Cullen Symposium. *Ocul Surf* 2009;7:67–77.
- [22] Kuo IC. A rashomon moment? Ocular involvement and COVID-19. *Ophthalmology* 2020. <https://doi.org/10.1016/j.ophtha.2020.04.027>. online ahead of print.
- [23] Cheema M, Aghazadeh H, Nazarali S, Ting A, Hodges J, McFarlane A, et al. Keratoconjunctivitis as the initial medical presentation of the novel coronavirus disease 2019 (COVID-19). *Can J Ophthalmol* 2020. <https://doi.org/10.1016/j.cjco.2020.03.003>. online ahead of print.
- [24] Colavita F, Lapa D, Carletti F, Lalle E, Bordini L, Marsella P, et al. SARS-CoV-2 isolation from ocular secretions of a patient with COVID-19 in Italy with prolonged viral RNA detection. *Ann Intern Med* 2020. <https://doi.org/10.7326/M20-1176>. online ahead of print.
- [25] Hui KPY, Cheung M-C, Perera RAPM, Ng K-C, Bui CHT, Ho JCW, et al. Tropism, replication competence, and innate immune responses of the coronavirus SARS-CoV-2 in human respiratory tract and conjunctiva: an analysis in ex-vivo and in-vitro cultures. *Lancet Respir Med* 2020. [https://doi.org/10.1016/S2213-2600\(20\)30193-4](https://doi.org/10.1016/S2213-2600(20)30193-4). online ahead of print.
- [26] Lange C, Wolf J, Auw-Haedrich C, Schlecht A, Boneva S, Lapp T, et al. Expression of the COVID-19 receptor ACE2 in the human conjunctiva. *J Med Virol* 2020. <https://doi.org/10.1002/jmv.25981>. online ahead of print.
- [27] Olivia Li JP, Shantha J, Wong TY, Wong EY, Mehta J, Lin H, et al. Preparedness among ophthalmologists: during and beyond the COVID-19 pandemic. *Ophthalmology* 2020;127:569–72.