

Early-childhood linear growth faltering in low- and middle-income countries

<https://doi.org/10.1038/s41586-023-06418-5>

Received: 9 June 2020

Accepted: 10 July 2023

Published online: 13 September 2023

Open access

 Check for updates

Jade Benjamin-Chung^{1,2,3}✉, Andrew Mertens², John M. Colford Jr², Alan E. Hubbard², Mark J. van der Laan², Jeremy Coyle², Oleg Sofrygin², Wilson Cai², Anna Nguyen^{1,2}, Nolan N. Pokpongkiat², Stephanie Djajadi², Anmol Seth², Wendy Jilek², Esther Jung², Esther O. Chung², Sonali Rosete², Nima Hejazi², Ivana Malenica², Haodong Li², Ryan Hafen⁴, Vishak Subramoney⁵, Jonas Häggström⁶, Thea Norman⁷, Kenneth H. Brown⁸, Parul Christian⁹, Benjamin F. Arnold^{10,11}✉ & The Ki Child Growth Consortium*

Globally, 149 million children under 5 years of age are estimated to be stunted (length more than 2 standard deviations below international growth standards)^{1,2}. Stunting, a form of linear growth faltering, increases the risk of illness, impaired cognitive development and mortality. Global stunting estimates rely on cross-sectional surveys, which cannot provide direct information about the timing of onset or persistence of growth faltering—a key consideration for defining critical windows to deliver preventive interventions. Here we completed a pooled analysis of longitudinal studies in low- and middle-income countries ($n = 32$ cohorts, 52,640 children, ages 0–24 months), allowing us to identify the typical age of onset of linear growth faltering and to investigate recurrent faltering in early life. The highest incidence of stunting onset occurred from birth to the age of 3 months, with substantially higher stunting at birth in South Asia. From 0 to 15 months, stunting reversal was rare; children who reversed their stunting status frequently relapsed, and relapse rates were substantially higher among children born stunted. Early onset and low reversal rates suggest that improving children's linear growth will require life course interventions for women of childbearing age and a greater emphasis on interventions for children under 6 months of age.

In 2018, 149 million children under 5 years of age (22% globally) were stunted (length-for-age z-score (LAZ) > 2 standard deviations below the median of the growth standard for age and sex), with the largest burden in South Asia and Africa^{1,2}. Early-life stunting is associated with increased risk of mortality³, diarrhoea, pneumonia and measles in childhood^{4,5} and impaired cognition and productivity in adulthood^{6–8}. Global income would increase by an estimated US\$176.8 billion per year if linear growth faltering could be eliminated⁹. The World Health Organization (WHO) 2025 global nutrition targets¹⁰ and Sustainable Development Goal 2.2.1 (ref. 11) propose to reduce stunting prevalence among children under 5 years from 2012 levels by 40% by 2025.

In low-resource settings, the first thousand days of life—including the prenatal period—is considered the critical window in which to intervene to prevent stunting¹². Intrauterine growth restriction and preterm birth are strongly associated with stunting at 24 months of age¹³. Most linear growth faltering occurs by the age of 2 years, and 70% of absolute length deficits by the age of 5 years occur before the age of 2 years⁶. Children who experience linear growth faltering before the age of 2 years can experience catch-up growth at older ages, particularly with

improvements to their nutrition, health and environment^{14–18}. However, the extent of catch-up growth depends on the timing and severity of early-life linear growth faltering¹⁹.

Granular information about the age of linear growth faltering onset and its persistence in early life will best inform when and how to intervene with preventive measures. Yet, most studies of the global epidemiology of stunting have used nationally representative, cross-sectional surveys—predominantly Demographic and Health Surveys (DHS)—to estimate age-specific stunting prevalence^{15,20–22}. Analyses of cross-sectional studies cannot identify longitudinal patterns of linear growth faltering or reversal. Further, they may be subject to survivor bias and fail to include those children most vulnerable to undernutrition. Few studies have estimated age-specific incidence within the first 2 years of life^{23–27}.

We estimated linear growth faltering incidence and reversal and linear growth velocity in 32 longitudinal cohorts in low- and middle-income countries (LMICs) with multiple, frequent measurements. The analysis provides new insights into the timing of onset and duration of linear growth faltering, with important implications for interventions.

¹Department of Epidemiology & Population Health, Stanford University, Stanford, CA, USA. ²Division of Epidemiology & Biostatistics, University of California, Berkeley, Berkeley, CA, USA.

³Chan Zuckerberg Biohub, San Francisco, CA, USA. ⁴Hafen Consulting, LLC, West Richland, WA, USA. ⁵DVPL Tech, Dubai, United Arab Emirates. ⁶Cytel Inc., Waltham, MA, USA. ⁷Quantitative Sciences, Bill & Melinda Gates Foundation, Seattle, WA, USA. ⁸Department of Nutrition, University of California, Davis, Davis, CA, USA. ⁹Center for Human Nutrition, Department of International Health, Johns Hopkins Bloomberg School of Public Health, Baltimore, MD, USA. ¹⁰Francis I. Proctor Foundation, University of California, San Francisco, San Francisco, CA, USA. ¹¹Department of Ophthalmology, University of California, San Francisco, San Francisco, CA, USA. *A list of authors and their affiliations appears at the end of the paper. ✉e-mail: jadebc@stanford.edu; ben.arnold@ucsf.edu

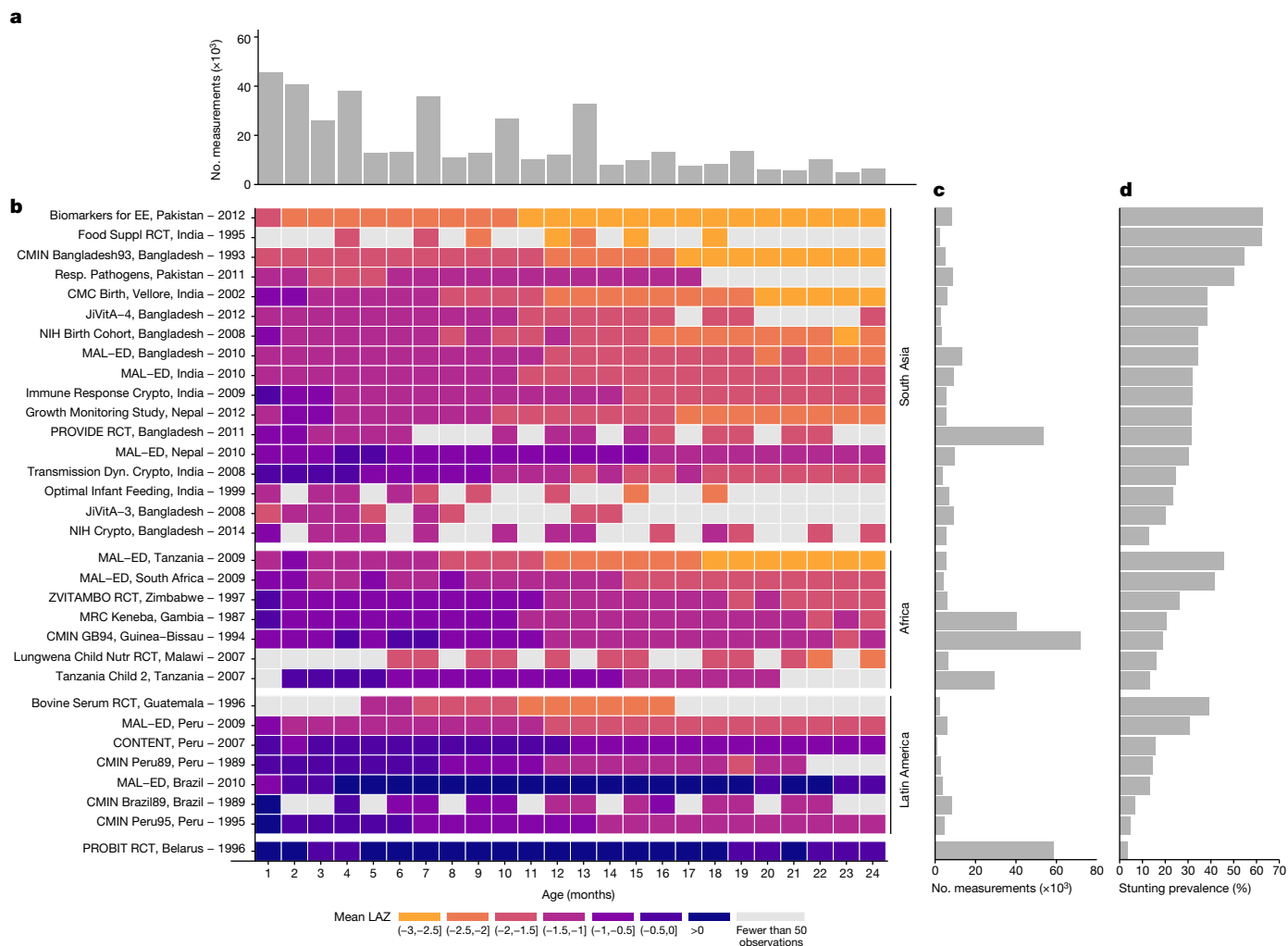


Fig. 1 | Summaries of included Ki cohorts. **a**, Number of observations (thousands) by age in months. **b**, Mean LAZ by age in months for each cohort. Cohorts are sorted by geographic region and mean LAZ. **c**, Number

of observations contributed by each cohort. **d**, Overall stunting prevalence in each cohort, defined as proportion of measurements with LAZ < -2.

We found that linear growth faltering occurs very early in the prenatal and postnatal phase—before the age of 6 months when most postnatal linear growth interventions begin. Our findings confirm the importance of the first 1,000 days as a critical window to intervene to prevent linear growth faltering but motivate a renewed focus on prenatal and early postnatal interventions.

Pooled longitudinal analyses

Here we report a pooled analysis of 32 longitudinal cohorts from 14 LMICs in South Asia, sub-Saharan Africa and Latin America followed between 1987 and 2017. Our objective was to estimate age-specific incidence and reversal of stunting and linear growth velocity from 0 to 24 months. Companion articles report results for child wasting (weight-for-length z-score < 2 standard deviations below the reference median)²⁸ and household, maternal and child-level risk factors associated with linear growth faltering²⁹. These data were aggregated by the Bill & Melinda Gates Foundation Knowledge Integration (Ki) initiative and comprise approximately 100 longitudinal studies on child birth, growth and development. We included cohorts from the database that met five inclusion criteria: conducted in LMICs; had a median year of birth in 1990 or later; enrolled children between birth and the age of 24 months and measured their length and weight repeatedly over time; did not restrict enrolment to acutely ill children; and collected

anthropometry measurements at least every 3 months (Extended Data Fig. 1). These criteria ensured that we could rigorously evaluate the timing and onset of stunting among children who were broadly representative of general populations in LMICs. Thirty-two cohorts met inclusion criteria, including 52,640 children and 412,458 total measurements from 1987 to 2017 (Fig. 1 and Supplementary Tables 1 and 2). Cohorts were located in South Asia ($n = 17$ cohorts in 4 countries), Africa ($n = 7$ in 6 countries), Latin America ($n = 7$ in 3 countries) and Eastern Europe ($n = 1$; Extended Data Fig. 2). Twenty-one cohorts measured children at least monthly, and 11 measured children every 3 months. Cohort sample sizes varied from 119 to 14,074 children. In most cohorts, more than 80% of enrolled children had LAZ measurements at each age of measurement (Extended Data Figs. 3 and 4).

We calculated LAZs using WHO 2006 growth standards³⁰. We dropped 859 of 413,317 measurements (0.2%) because LAZ was unrealistic (> 6 or < -6 z), and we defined stunting as LAZ < -2 and severe stunting as LAZ < -3 (ref. 30). Unless otherwise indicated, estimates that pool across cohorts used random-effects models fitted with restricted maximum-likelihood estimation^{31,32}. Within each cohort, the monthly mean LAZ ranged from -3.06 to +1.31, and the monthly proportion stunted ranged from 0% to 91% (Fig. 1).

To assess Ki cohort representativeness, we compared LAZ from the Ki cohorts with contemporary population-based, cross-sectional DHS data in the same countries. Ki cohorts and DHS z-score distributions

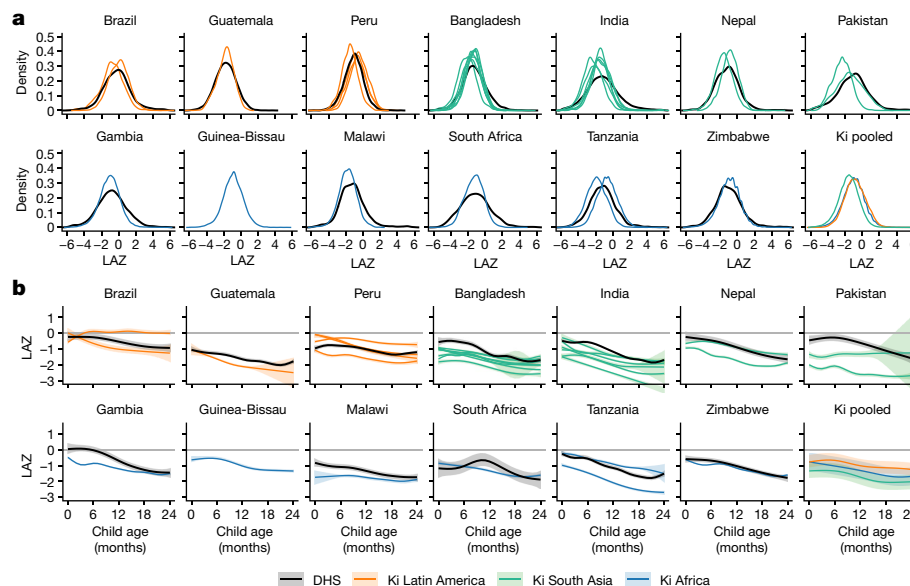


Fig. 2 | LAZs by age and region. a, Kernel density distributions of LAZ in DHS countries that overlap with Ki cohorts (black lines) and in each Ki cohort (coloured lines). **b**, Mean LAZs by age for DHS countries overlapping with Ki cohorts (black lines) and pooled across Ki longitudinal cohorts with at least

quarterly measurement (coloured lines) estimated with cubic splines. Shaded bands are approximate 95% simultaneous confidence intervals. The DHS survey was not conducted in Guinea-Bissau during the study period. Each panel includes $n = 125,046$ children from DHS data and $n = 52,640$ children from Ki cohorts.

were similar (Fig. 2a). The distribution of LAZ was shifted to the left for Ki cohorts in South Asia compared to those in Latin America and Africa. Mean LAZ by age was generally lower in Ki cohorts than in DHS surveys, especially in South Asia, but was slightly higher at certain ages in two Peruvian cohorts (Fig. 2b).

Growth faltering as a whole-population condition

In approximately half of cohorts, the 95th percentile of the LAZ distribution dropped below 0 by the age of 15 months (Extended Data Fig. 5). This pattern is consistent with the characterization of linear growth faltering as a ‘whole-population’ condition²¹. In most cohorts, as children aged, LAZ distributions shifted downwards (Extended Data Fig. 6), and standard deviations and skewness were similar across ages (Extended Data Fig. 7).

Onset of stunting in early life

To measure the timing of stunting onset, we classified a child as a new incident case in three-month age periods if their LAZ dropped below -2 for the first time in that age period. The percentage of children that were stunted at birth ranged from 0.3% to 42% in each cohort and was 13% overall (Fig. 3a). The percentage that experienced incident stunting onset between birth and 3 months ranged from 6% to 47% in each cohort and was 16% overall. Children stunted between birth and 3 months accounted for 23% of all children who experienced stunting by the age of 24 months (69% of children). Trends were similar for severe stunting (Supplementary Note 1).

Early onset of stunting was consistent across geographic regions and countries with different levels of health spending, poverty and under-5 mortality. Very early-life stunting onset was most common in South Asia, where 20% of children were stunted at birth, and another 18% became stunted by the age of 3 months (Fig. 3a). In Africa and Latin America, the percentage stunted at birth was lower than the percentage that became stunted between birth and the age of 3 months. In all regions, the rate of onset declined at subsequent ages. Overall, the proportion stunted at birth or by the age of 3 months was higher, and onset was lower at subsequent ages in countries with a lower proportion

of gross domestic product devoted to health spending, higher child mortality and a higher percentage of the population living on less than US\$1.90 per day (Extended Data Figs. 8–10).

We summarized age trends in LAZ stratified by geographic region and timing of stunting onset (Fig. 3b and Extended Data Fig. 11). Among children stunted at birth, LAZ differed markedly between geographic regions: mean LAZ rose in the first month of life in all regions and then remained close to -0.5 in Latin America, close to -2 in Africa and close to -2.5 in South Asia. Regional differences were less pronounced among children stunted at later ages, although children in South Asian cohorts had consistently lower mean LAZ than children from African and Latin American cohorts. Children who became stunted between birth and the age of 6 months started at low birth LAZ (mean = -2.7) and had moderate rates of decline, whereas children who became stunted between ages 6 and 15 months started at higher birth LAZ (mean = -1.4) but had much faster rates of decline in LAZ, from above $-1z$ at birth to below $-2z$ by the age of 15 months. Children who were never stunted still experienced a drop of approximately $0.5z$ in mean LAZ from birth to the age of 15 months in all regions, showing that even children not classified as ‘stunted’ on average experienced substantial, postnatal linear growth faltering.

Stunting reversal and relapse

We reasoned that: lower than average linear growth ($LAZ < 0$) would persist among children who experienced stunting reversal (that is, LAZ increased from below -2 to above -2); and children who experienced stunting reversal would experience stunting relapse at later ages. To test these hypotheses, we classified a child’s change in stunting status from birth to the age of 15 months among monthly measured cohorts. New incidence of stunting was highest at birth and declined steadily to 3.3% per month by the age of 4 months (Fig. 4a), a pattern that was most marked in South Asia (Extended Data Fig. 12). Incidence rates of new and relapse stunting exceeded rates of reversal at all ages, new results that illustrate the underlying dynamics of a gradually accumulating stunting burden as children age: by the age of 15 months, 34.0% of children were stunted, 50.5% had ever been stunted, and 16.5% had experienced stunting reversal and were no longer stunted (Fig. 4a). Incident stunting relapse following reversal ranged from 2.0 to 3.5%

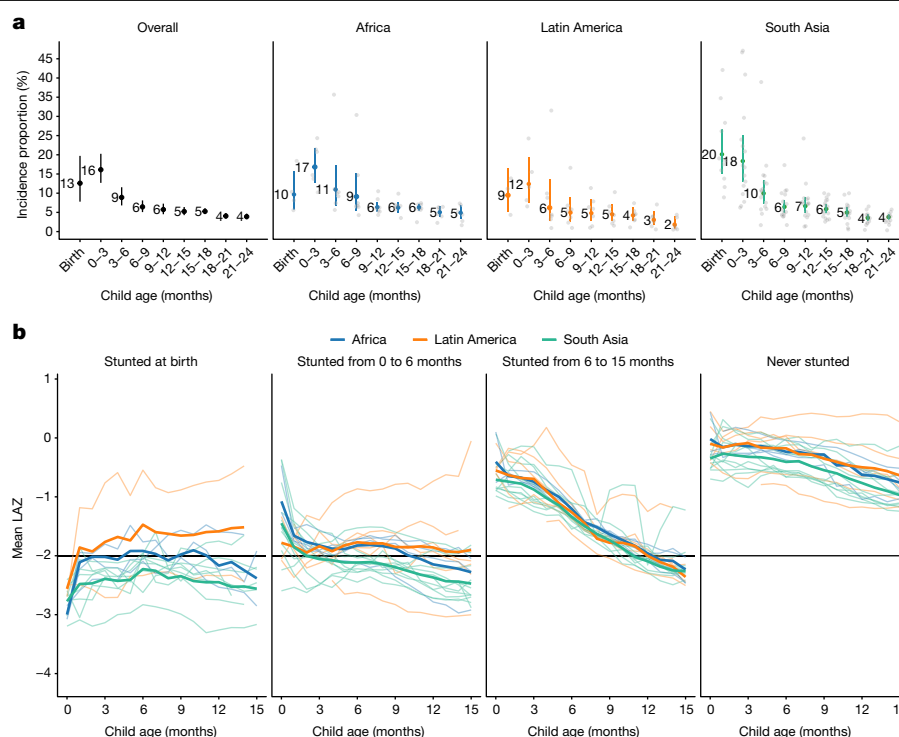


Fig. 3 | Incidence of stunting and mean LAZ by age and region. a, Proportion of children experiencing incident stunting onset overall ($n = 19$ –32 studies; $n = 11,929$ –42,902 children) and stratified by region (Africa: $n = 4$ –8 studies, $n = 5,529$ –15,837 children; Latin America: $n = 3$ –7 studies, $n = 413$ –1,528 children; South Asia $n = 11$ –17 studies, $n = 4,514$ –17,802 children). ‘0–3’ includes the age of 2 days up to 3 months. Analyses include cohorts with at least quarterly measurements; vertical bars indicate 95% confidence intervals. Grey points indicate cohort-specific estimates. The median I^2 statistic measuring heterogeneity in each meta-analysis was 95 (interquartile range (IQR) = 77–98) overall, 85 (IQR = 83–97) in Africa, 67 (IQR = 45–87) in Latin America and 91 (IQR = 79–96) in South Asia. **b**, Mean LAZ stratified by age of incident stunting

from birth to the age of 15 months ($n = 21$ cohorts that measured children at least monthly between birth and the age of 15 months, $n = 11,243$ children). Horizontal black lines indicate stunting the cutoff of -2 LAZ. ‘Never stunted’ includes children who did not become stunted by the age of 15 months. Pooled results were derived from random-effects models with restricted maximum-likelihood estimation. Thinner lines indicate cohort-specific estimates. The median I^2 statistic measuring heterogeneity in each meta-analysis was 91 (IQR = 83–96) overall, 85 (IQR = 63–94) in Africa, 94 (IQR = 88–96) in Latin America and 85 (IQR = 78–92) in South Asia. Extended Data Fig. 11 contains pooled means from **b** with 95% confidence intervals.

per month from ages 6 to 15 months, and patterns were similar across regions (Extended Data Fig. 12). In South Asia, stunting reversal declined as children aged, but rates were stable across ages in Africa and Latin America; overall reversal was slightly less common in Latin America (Extended Data Fig. 12).

To assess whether a child’s birth length influenced their propensity to recover from stunting, we summarized incident stunting, relapse and reversal rates stratified by birth LAZ subgroup in monthly measured cohorts (Fig. 4b). Eighty-six per cent of children who ever became stunted had LAZ < 0 at birth. Rates of stunting relapse increased with age and were generally higher among children who were born stunted. Stunting reversal was more common at young ages for children born with LAZ < -2 , which probably reflects regression to the mean. After the age of 6 months, stunting reversal rates were similarly low among children with birth LAZ < -2 ($< 7\%$ per month) and birth LAZ -2 to 0 ($< 5\%$ per month). These results indicate that linear growth faltering at birth is a key determinant of children’s linear growth trajectories in early life, recovery is rare among all children who become stunted by the age of 15 months, and children who are stunted at birth are more prone to transient stunting reversal followed by stunting relapse.

We next studied the distribution of improvement in LAZ by age of stunting reversal to assess whether reversal at different ages was associated with more sustained improvement in LAZ. For children who experienced stunting reversal, we summarized the LAZ distribution at subsequent ages and estimated the mean difference in LAZ measured at older ages compared to when stunting was reversed. At the time of stunting reversal,

the LAZ distribution mode was close to the -2 cutoff (Fig. 5a and Extended Data Fig. 13). As children aged, LAZ distributions gradually shifted downwards, illustrating that linear growth deficits continued to accumulate. Among children who experienced stunting reversal before the age of 6 months, mean difference in LAZ 9 months later was -0.69 (95% confidence interval -0.84 , -0.55 ; cohort-specific range: -1.04 , -0.22 ; Fig. 5b). Children who were older at the time of reversal experienced a larger decline in subsequent LAZ compared to that of younger children (Fig. 5b). Overall, improvements in LAZ following stunting reversal were neither sustained nor large enough to erase linear growth deficits and did not resemble a biological recovery process for most children.

Growth velocity by age and sex

We defined linear growth velocity as a child’s change in length between two time points divided by the number of months between the time points (cm per month). From 0 to 3 months, cohort-specific length velocity ranged from below the 1st percentile of the WHO standard to above the 50th for boys and above the 75th percentile for girls (Fig. 6a). At subsequent ages, length velocity in each cohort was mostly between the 15th and 50th percentiles of the WHO standard, except in one cohort in Belarus, which had a higher length velocity. Larger deficits at the youngest ages were consistent with highest incidence of stunting from birth to the age of 3 months (Fig. 3a). From the ages of 3 to 24 months, on average, children’s change in length was between 0.75 and 1.25 cm per month. We also estimated within-child rates of LAZ change per

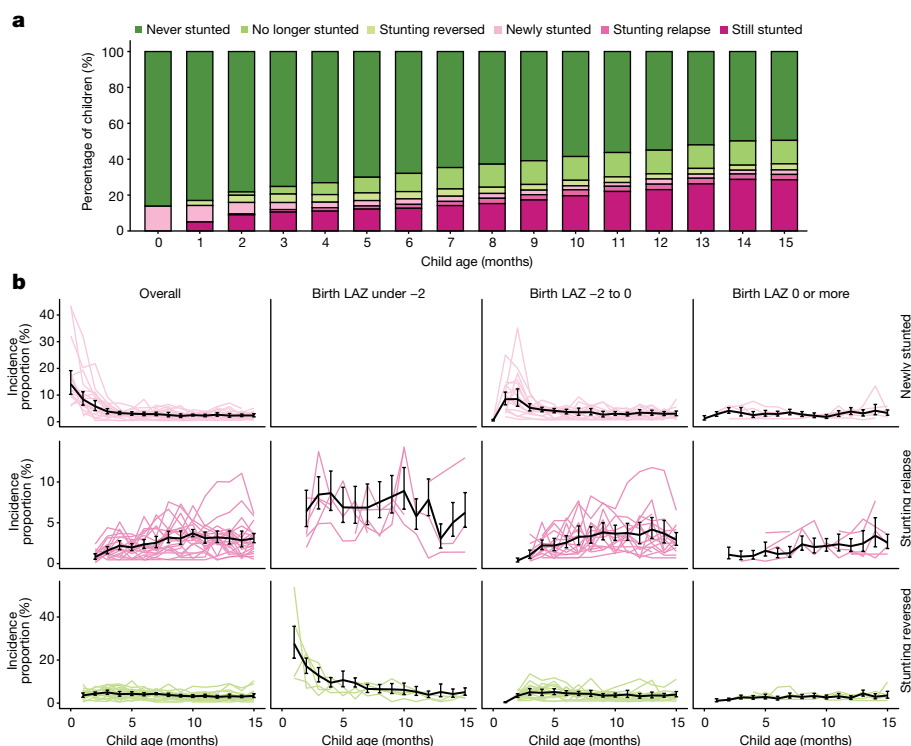


Fig. 4 | Stunting reversal and relapse. a, Percentage of children with stunting reversal and relapse by age. **b,** Incidence proportion of new stunting, stunting relapse and stunting reversal by age and birth LAZ, defined as the first LAZ measurement before the age of 30 days. The black line presents estimates pooled using random effects with restricted maximum-likelihood estimation ($n = 168$ models); in 11 models, alternative pooling methods were used because the restricted maximum-likelihood estimator did not converge (fixed-effects $n = 8$ models; maximum-likelihood $n = 3$ models). Coloured lines indicate cohort-specific estimates. In the panel for birth LAZ under -2 and newly stunted children, no data are shown because all children were stunted at birth

by definition. Vertical black error bars indicate 95% confidence intervals. The number of children ranged from 1,831 to 9,965 in the panels for birth LAZ under -2 , 34,427 to 43,753 in the panels for birth LAZ = -2 to 0, and 10,450 to 14,862 in the panels for birth LAZ 0 or more. The median I^2 statistic measuring heterogeneity in each meta-analysis was 55 (IQR = 47–70). Extended Data Fig. 12 presents similar estimates stratified by geographic region. Both panels include data from 21 cohorts in 10 countries with at least monthly measurement ($n = 11,435$). Both panels contain data up to the age of 15 months because in most cohorts, measurements were less frequent above the age of 15 months.

month, which compares changes in a child's length relative to the WHO standard over time. The difference in LAZ within child per month was largest from 0 to 3 months; after the age of 3 months, the mean change

in LAZ within child was <0.3 between different age intervals (Fig. 6b). Generally, velocity within age was higher in Latin America than in South Asia and Africa (Extended Data Fig. 14).

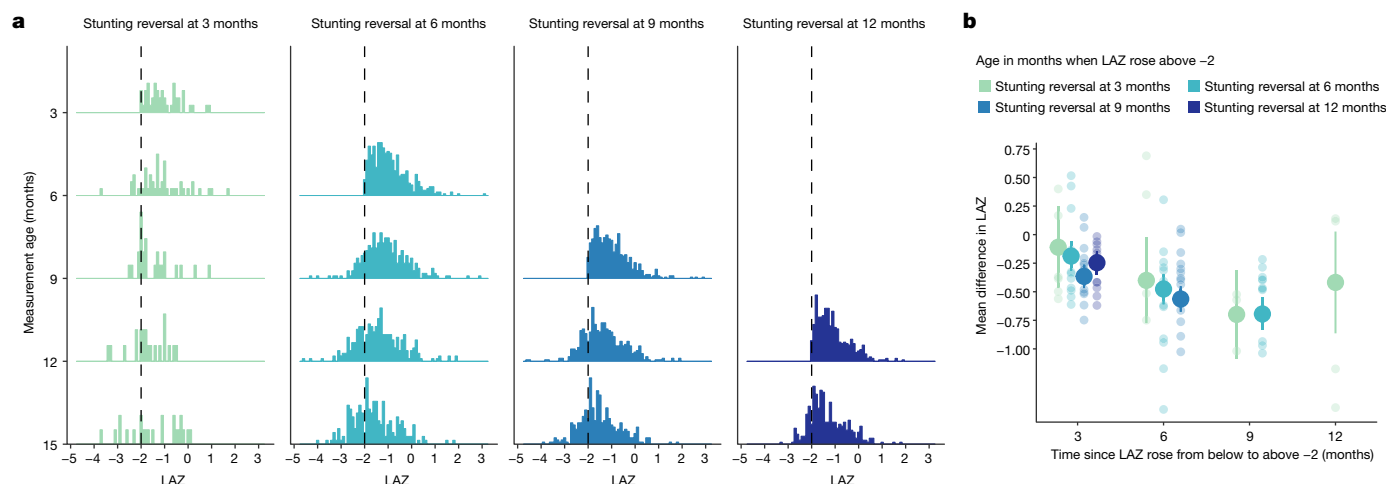


Fig. 5 | Subsequent LAZ among children with stunting reversal at different ages. a, Distribution of LAZ at subsequent measurements among children who experienced stunting reversal at the ages of 3, 6, 9 and 12 months. Vertical black dashed lines indicate stunting the cutoff of -2 LAZ. **b,** Mean difference in LAZ following stunting reversal at each subsequent age of measurement by age of

reversal. Smaller, partially transparent points indicate cohort-specific estimates. Estimates include data from 21 cohorts in 10 countries with at least monthly measurement ($n = 11,271$). Vertical bars indicate 95% confidence intervals. All panels contain data up to the age of 15 months because in most cohorts, measurements were less frequent above the age of 15 months.

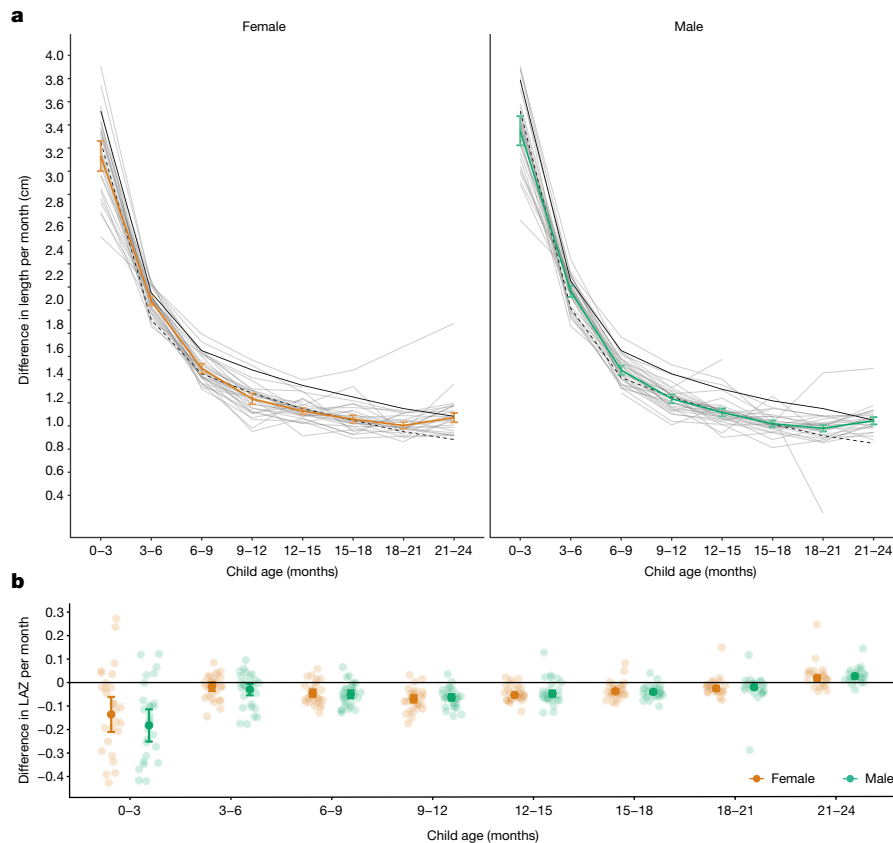


Fig. 6 | Linear growth velocity by age and sex. a, Within-child difference in length in centimetres per month stratified by age among male (green line) and female (orange line) children; 25th percentile of the WHO growth velocity standards (dashed black lines); and the 50th percentile (solid black line). Light grey lines indicate cohort-specific linear growth velocity curves. The median I^2 statistic measuring heterogeneity in each meta-analysis was 90 (IQR = 83–94).

b, Within-child difference in LAZ per month by age and sex. Smaller partially transparent points indicate cohort-specific estimates. The median I^2 statistic measuring heterogeneity in each meta-analysis was 89 (IQR = 78–92). Both panels include 32 Ki cohorts in 14 countries that measured children at least quarterly ($n = 52,640$ children) pooled using random-effects models fitted with restricted maximum-likelihood estimation. Vertical bars indicate 95% confidence intervals.

Discussion

This large-scale analysis of 32 longitudinal cohorts from LMICs revealed new insights into the timing, persistence and recurrence of linear growth faltering from birth to the age of 2 years. Previous cross-sectional studies found that stunting prevalence increased gradually with age^{15,20–22}. By contrast, we found that incident stunting onset was highest between birth and the age of 3 months, a pattern consistent across geographic regions, and was most pronounced in countries with a lower proportion of gross domestic product devoted to health spending, higher under-5 mortality rates and higher poverty levels (Fig. 3a and Extended Data Figs. 8–10). Stunting at birth was a key predictor of children's linear growth trajectories to the age of 15 months: stunting relapse in the first year of life was substantially higher among children who were stunted at birth compared to those who were not born stunted (Fig. 4b). The burden and persistence of very early-life linear growth faltering was most stark in South Asia, where 20% of children were stunted at birth (Fig. 3a) and children who were stunted at birth had a mean LAZ of approximately -2.5 at all subsequent ages, substantially lower than that for children in other regions (Fig. 3b). Most children who experienced stunting reversal continued to experience linear growth deficits, and more than 20% who achieved reversal were stunted again at later measurements (Fig. 5a). Even among children who never met criteria for stunting, mean LAZ steadily declined by over 0.5 z by the age of 15 months (Fig. 3b)—a result that shows that linear growth faltering among children in LMICs is a whole-population phenomenon, with both stunted and not stunted children experiencing suboptimal growth trajectories in early life²¹.

Two key conclusions from a recent series on child maternal and child undernutrition³³ were that improving children's linear growth will require a life course approach with an emphasis on women's health and that targeting interventions by age and geography may yield greater benefits than one-size-fits-all approaches. Our results provide new quantitative evidence that strengthens these conclusions and enables more precise statements about the extent of the whole-population burden, age windows for preventive interventions, and the uniquely high incidence and low reversal rates among children in South Asia compared with those in other geographic regions.

Highest stunting onset in the first 3 months of life and greater stunting relapse among children who were born stunted underscore the importance of pre-pregnancy and prenatal interventions to reduce stunting. These interventions include maternal micronutrient and macronutrient supplementation^{34,35}, increasing women's autonomy and education³⁶, reducing adolescent pregnancies in LMICs by delaying the age of marriage and first pregnancy³⁷, and promoting family planning³⁸. Interventions to prevent prenatal infections, such as intermittent preventive treatment for malaria, may also increase fetal linear growth in regions where such infections co-occur with linear growth faltering³⁹. Our finding that stunting incidence at birth was lower in countries with a greater level of national health expenditures suggests that overall investments in healthcare systems may also improve linear growth.

In South Asia in particular, where stunting at birth was highest, intervening to improve the health of women of childbearing age may be critical to improving children's linear growth. Previous work has identified South Asian women's nutrition before and during pregnancy and poor sanitation conditions as key contributors to stunting at birth⁴⁰.

Regarding sanitation, in 2020 the prevalence of open defaecation was 18% in sub-Saharan Africa, 12% in South Asia and 2% in Latin America, and access to basic sanitation was lower in sub-Saharan Africa than in South Asia⁴¹. Recent trials found that improving household-level sanitation did not improve children's linear growth, but studies did not measure impacts on mothers⁴². A more likely explanation for higher stunting at birth in South Asia is women's nutritional status. Prevalence of low body mass index in women is highest in South Asia (24%), with much higher prevalence in some geographic hotspots³³. In addition, 40–70% of women in South Asia are less than 150 cm tall⁴³, and the prevalence of infants born small for gestational age is 34% in South Asia compared to 17% in sub-Saharan Africa and 9% in Latin America⁴⁴. Our analysis of risk factors for stunting in a companion paper in this series reports that maternal height, weight and body mass index were the strongest predictors of stunting at birth and child linear growth trajectories²⁹. These findings point to the need to tailor interventions to the unique factors influencing women's nutrition and prenatal health in South Asia.

In this study, 25% of children became stunted between birth and the age of 6 months, yet few child nutrition interventions are recommended by the WHO in this age range. In the neonatal period, those interventions include delayed cord clamping, neonatal vitamin K administration and kangaroo mother care⁴⁵. Beyond the neonatal period, the sole recommended intervention is exclusive breastfeeding⁴⁵, which substantially reduces the risk of mortality and morbidity but has not been found to reduce infant stunting^{4,46–49}. Further research is needed to identify interventions that prevent linear growth faltering between birth and the age of 6 months, including nutritional support of the lactating parent and the vulnerable infant⁵⁰. Interventions may need to focus on upstream risk factors, such as maternal pre-conception and prenatal health and nutrition, and microbiota.

We found that 31% of children became stunted during the complementary feeding phase (age of 6–24 months). Meta-analyses evaluating the effectiveness of interventions during this phase on linear growth have reported modest impacts of lipid-based nutrient supplements⁵¹, modest or no impact of micronutrient supplementation⁵², and no impact of water and sanitation improvements, deworming or maternal education⁵². The dearth of effective postnatal interventions to improve linear growth motivates renewed efforts to identify alternative, possibly multisectoral, interventions and to improve intervention targeting and implementation^{53,54}.

There were several limitations to the analyses. First, length estimates may be subject to measurement error; stunting reversal and relapse analyses that rely on thresholds are more sensitive to such errors. However, detailed assessments of measurement quality indicated that measurement quality was high across cohorts (Supplementary Note 2). Second, estimates of LAZ at birth using the WHO child growth standards overestimate stunting in preterm infants⁵⁵. Accurate estimates of gestational age were not available in included cohorts; seven cohorts measured gestational age by recall of last menstrual period or newborn examination, and one cohort measured gestational age by ultrasound. In a sensitivity analysis adjusting for gestational age pooling across cohorts that measured it, stunting prevalence at birth was 1% lower (Extended Data Fig. 15). Third, included cohorts were not inclusive of all countries in the regions presented here, and linear growth faltering was more common in included African and South Asian cohorts than in corresponding contemporary representative surveys. The consistency between attained linear growth patterns in this and nationally representative DHS surveys (Fig. 2) suggests that overall, our results have reasonably good external validity. For growth velocity, the cohorts represented populations close to the 25th percentile of international standards (Fig. 5a). Fourth, the included cohorts measured child length every 1–3 months, and ages of measurement varied, so different numbers of children and cohorts contributed to each estimate. However, when we repeated analyses in cohorts with monthly measurements from birth to 24 months ($n = 18$ cohorts in 10 countries, 10,830 children),

results were similar (Supplementary Note 3). Finally, our inferences are limited to the first 2 years of life as very few included studies measured children at older ages. Other studies, however, have found that stunting status in early life is associated with health outcomes later in life, and the timing and extent of early-life linear growth faltering is associated with the magnitude of later catch-up growth^{6–8,16,17,19}.

Conclusion

Current WHO 2025 global nutrition targets and Sustainable Development Goal 2.2.1 aim to reduce stunting prevalence among children under 5 years by 2025. Our findings suggest that defining stunting targets at earlier ages (for example, stunting by 3 or 6 months) would help focus attention on the period when interventions may be most impactful. In addition, our results motivate a life course approach that targets interventions to women of childbearing age and includes interventions for children during their first months of life.

Online content

Any methods, additional references, Nature Portfolio reporting summaries, source data, extended data, supplementary information, acknowledgements, peer review information; details of author contributions and competing interests; and statements of data and code availability are available at <https://doi.org/10.1038/s41586-023-06418-5>.

1. Levels and Trends in Child Malnutrition: Key Findings of the 2019 Edition of the Joint Child Malnutrition Estimates (UNICEF, WHO & World Bank, 2019); <https://www.unicef.org/media/60626/file/Joint-malnutrition-estimates-2019.pdf>.
2. Kinyoki, D. K. et al. Mapping child growth failure across low- and middle-income countries. *Nature* **577**, 231–234 (2020).
3. McDonald, C. M. et al. The effect of multiple anthropometric deficits on child mortality: meta-analysis of individual data in 10 prospective studies from developing countries. *Am. J. Clin. Nutr.* **97**, 896–901 (2013).
4. Black, R. E. et al. Maternal and child undernutrition and overweight in low-income and middle-income countries. *Lancet* **382**, 427–451 (2013).
5. Olofin, I. et al. Associations of suboptimal growth with all-cause and cause-specific mortality in children under five years: a pooled analysis of ten prospective studies. *PLoS One* **8**, e64636 (2013).
6. de Onis, M. & Branca, F. Childhood stunting: a global perspective. *Matern. Child Nutr.* **12**, 12–26 (2016).
7. Prendergast, A. J. & Humphrey, J. H. The stunting syndrome in developing countries. *Paediatr. Int. Child Health* **34**, 250–265 (2014).
8. Adair, L. S. et al. Associations of linear growth and relative weight gain during early life with adult health and human capital in countries of low and middle income: findings from five birth cohort studies. *Lancet* **382**, 525–534 (2013).
9. Fink, G. et al. Schooling and wage income losses due to early-childhood growth faltering in developing countries: national, regional, and global estimates. *Am. J. Clin. Nutr.* **104**, 104–112 (2016).
10. *Global Nutrition Targets 2025: Policy Brief Series (WHO/NMH/NHD/4.2)* (WHO, 2014); <https://apps.who.int/iris/rest/bitstreams/665585/retrieve>.
11. Goal 2: End Hunger, Achieve Food Security and Improved Nutrition and Promote Sustainable Agriculture (United Nations, accessed 26 September 2019); <https://sustainabledevelopment.un.org/sdg2>.
12. Martorell, R. Improved nutrition in the first 1000 days and adult human capital and health. *Am. J. Hum. Biol.* **29**, e22952 (2017).
13. Christian, P. et al. Risk of childhood undernutrition related to small-for-gestational age and preterm birth in low- and middle-income countries. *Int. J. Epidemiol.* **42**, 1340–1355 (2013).
14. Dewey, K. G. & Begum, K. Long-term consequences of stunting in early life. *Matern. Child Nutr.* **7**, 5–18 (2011).
15. Leroy, J. L., Ruel, M., Habicht, J.-P. & Frongillo, E. A. Using height-for-age differences (HAD) instead of height-for-age z-scores (HAZ) for the meaningful measurement of population-level catch-up in linear growth in children less than 5 years of age. *BMC Pediatr.* **15**, 145 (2015).
16. Aizawa, T. Trajectory of inequality of opportunity in child height growth: evidence from the Young Lives study. *Demogr. Res.* **42**, 165–202 (2020).
17. Georgiadis, A. et al. Growth recovery and faltering through early adolescence in low- and middle-income countries: determinants and implications for cognitive development. *Soc. Sci. Med.* **179**, 81–90 (2017).
18. Prentice, A. M. et al. Critical windows for nutritional interventions against stunting. *Am. J. Clin. Nutr.* **97**, 911–918 (2013).
19. Gausman, J., Kim, R. & Subramanian, S. V. Stunting trajectories from post-infancy to adolescence in Ethiopia, India, Peru, and Vietnam. *Matern. Child Nutr.* **15**, e12835 (2019).
20. Victora, C. G., de Onis, M., Hallal, P. C., Blössner, M. & Shrimpton, R. Worldwide timing of growth faltering: revisiting implications for interventions. *Pediatrics* **125**, e473–e480 (2010).
21. Roth, D. E. et al. Early childhood linear growth faltering in low-income and middle-income countries as a whole-population condition: analysis of 179 Demographic and Health Surveys from 64 countries (1993–2015). *Lancet Glob. Health* **5**, e1249–e1257 (2017).

22. Leroy, J. L., Ruel, M., Habicht, J.-P. & Frongillo, E. A. Linear growth deficit continues to accumulate beyond the first 1000 days in low- and middle-income countries: global evidence from 51 national surveys. *J. Nutr.* **144**, 1460–1466 (2014).
23. Kumar, R., Deshmukh, P. R. & Garg, B. S. Incidence and correlates of “growth faltering” among 0–6 y children: a panel study from rural Wardha. *Indian J. Pediatr.* **79**, 333–341 (2012).
24. Lundeen, E. A. et al. Growth faltering and recovery in children aged 1–8 years in four low- and middle-income countries: Young Lives. *Public Health Nutr.* **17**, 2131–2137 (2014).
25. Mangani, C. et al. Effect of complementary feeding with lipid-based nutrient supplements and corn-soy blend on the incidence of stunting and linear growth among 6- to 18-month-old infants and children in rural Malawi. *Matern. Child Nutr.* **11**, 132–143 (2015).
26. Maleta, K., Virtanen, S. M., Espo, M., Kulmala, T. & Ashorn, P. Childhood malnutrition and its predictors in rural Malawi. *Paediatr. Perinat. Epidemiol.* **17**, 384–390 (2003).
27. Mongkolkeha, A., Thinkhamrop, B., Mo-Suwan, L., Chittchang, U. & Choprapawon, C. Prevalence and incidence of child stunting from birth to two years of life in Thai children: based on the Prospective Cohort Study of Thai Children (PCTC). *J. Med. Assoc. Thai.* **93**, 1368–1378 (2010).
28. Mertens, A. et al. Child wasting and concurrent stunting in low- and middle-income countries. *Nature* <https://doi.org/10.1038/s41586-023-06480-z> (2023).
29. Mertens, A. et al. Causes and consequences of child growth faltering in low- and middle-income countries. *Nature* <https://doi.org/10.1038/s41586-023-06501-x> (2023).
30. WHO Multicentre Growth Reference Study Group *WHO Child Growth Standards: Length/Height-for-Age, Weight-for-Age, Weight-for-Length, Weight-for-Height and Body Mass Index-for-Age: Methods and Development* (WHO, 2006).
31. Viechtbauer, W. Bias and efficiency of meta-analytic variance estimators in the random-effects model. *J. Educ. Behav. Stat.* **30**, 261–293 (2005).
32. Raudenbush, S. W. in *The Handbook of Research Synthesis and Meta-Analysis* (eds Cooper, H. et al.) 295–315 (Russell Sage Foundation, 2009).
33. Victora, C. G. et al. Revisiting maternal and child undernutrition in low-income and middle-income countries: variable progress towards an unfinished agenda. *Lancet* **397**, 1388–1399 (2021).
34. Das, J. K. et al. Lipid-based nutrient supplements for maternal, birth, and infant developmental outcomes. *Cochrane Database Syst. Rev.* **8**, CD012610 (2018).
35. Lassi, Z. S., Das, J. K., Zahid, G., Imdad, A. & Bhutta, Z. A. Impact of education and provision of complementary feeding on growth and morbidity in children less than 2 years of age in developing countries: a systematic review. *BMC Public Health* **13**, S13 (2013).
36. Carlson, G. J., Kordas, K. & Murray-Kolb, L. E. Associations between women's autonomy and child nutritional status: a review of the literature. *Matern. Child Nutr.* **11**, 452–482 (2015).
37. Svanemyr, J., Chandra-Mouli, V., Raj, A., Travers, E. & Sundaram, L. Research priorities on ending child marriage and supporting married girls. *Reprod. Health* **12**, 80 (2015).
38. Dhingra, S. & Pingali, P. L. Effects of short birth spacing on birth-order differences in child stunting: evidence from India. *Proc. Natl Acad. Sci. USA* **118**, e2017834118 (2021).
39. Luntamo, M., Kulmala, T., Cheung, Y. B., Maleta, K. & Ashorn, P. The effect of antenatal monthly sulphadoxine-pyrimethamine, alone or with azithromycin, on foetal and neonatal growth faltering in Malawi: a randomised controlled trial. *Trop. Med. Int. Health* **18**, 386–397 (2013).
40. Aguayo, V. M. & Menon, P. Stop stunting: improving child feeding, women's nutrition and household sanitation in South Asia. *Matern. Child Nutr.* **12**, 3–11 (2016).
41. *Progress on Household Drinking Water, Sanitation and Hygiene: Five Years into the SDGs* (WHO/UNICEF Joint Monitoring Programme for Water Supply, Sanitation and Hygiene, 2020); <https://washdata.org/sites/default/files/2022-01/jmp-2021-wash-households-highlights.pdf>.
42. Cumming, O. et al. The implications of three major new trials for the effect of water, sanitation and hygiene on childhood diarrhea and stunting: a consensus statement. *BMC Med.* **17**, 173 (2019).
43. Child Health Epidemiology Reference Group Small-for-Gestational-Age/Preterm Birth Working Group. Short maternal stature increases risk of small-for-gestational-age and preterm births in low- and middle-income countries: individual participant data meta-analysis and population attributable fraction. *J. Nutr.* **145**, 2542–2550 (2015).
44. Lee, A. C. et al. Estimates of burden and consequences of infants born small for gestational age in low and middle income countries with INTERGROWTH-21st standard: analysis of CHERG datasets. *Br. Med. J.* **358**, i3677 (2017).
45. *Reducing Stunting in Children: Equity Considerations for Achieving the Global Nutrition Targets 2025* (WHO, 2018).
46. Victora, C. G. et al. Breastfeeding in the 21st century: epidemiology, mechanisms, and lifelong effect. *Lancet* **387**, 475–490 (2016).
47. Bhutta, Z. A. et al. What works? Interventions for maternal and child undernutrition and survival. *Lancet* **371**, 417–440 (2008).
48. Giugliani, E. R. J., Horta, B. L., Mola, C. L., de, Lisboa, B. O. & Victora, C. G. Effect of breastfeeding promotion interventions on child growth: a systematic review and meta-analysis. *Acta Paediatr.* **104**, 20–29 (2015).
49. Eriksen, K. G. et al. Following the World Health Organization's recommendation of exclusive breastfeeding to 6 months of age does not impact the growth of rural Gambian infants. *J. Nutr.* **147**, 248–255 (2017).
50. Christian, P. et al. The need to study human milk as a biological system. *Am. J. Clin. Nutr.* **113**, 1063–1072 (2021).
51. Das, J. K. et al. Preventive lipid-based nutrient supplements given with complementary foods to infants and young children 6 to 23 months of age for health, nutrition, and developmental outcomes. *Cochrane Database Syst. Rev.* **5**, CD012611 (2019).
52. Park, J. H. et al. Association of early interventions with birth outcomes and child linear growth in low-income and middle-income countries: Bayesian network meta-analyses of randomized clinical trials. *JAMA Netw. Open* **2**, e197871 (2019).
53. del Carmen Casanovas, M. et al. Multi-sectoral interventions for healthy growth. *Matern. Child Nutr.* **9**, 46–57 (2013).
54. Ruel, M. & Alderman, H., Maternal and Child Nutrition Study Group. Nutrition-sensitive interventions and programmes: how can they help to accelerate progress in improving maternal and child nutrition? *Lancet* **382**, 536–551 (2013).
55. Perumal, N. et al. Effect of correcting for gestational age at birth on population prevalence of early childhood undernutrition. *Emerg. Themes Epidemiol.* **15**, 3 (2018).

Publisher's note Springer Nature remains neutral with regard to jurisdictional claims in published maps and institutional affiliations.



Open Access This article is licensed under a Creative Commons Attribution 4.0 International License, which permits use, sharing, adaptation, distribution and reproduction in any medium or format, as long as you give appropriate credit to the original author(s) and the source, provide a link to the Creative Commons licence, and indicate if changes were made. The images or other third party material in this article are included in the article's Creative Commons licence, unless indicated otherwise in a credit line to the material. If material is not included in the article's Creative Commons licence and your intended use is not permitted by statutory regulation or exceeds the permitted use, you will need to obtain permission directly from the copyright holder. To view a copy of this licence, visit <http://creativecommons.org/licenses/by/4.0/>.

© The Author(s) 2023

The Ki Child Growth Consortium

Souheila Abbeduto¹², Linda S. Adair¹³, Tahmeed Ahmed¹⁴, Asad Ali¹⁵, Hasmat Ali¹⁶, Per Ashorn^{17,18}, Rajiv Bahl¹⁹, Mauricio L. Barreto²⁰, France Begin²¹, Pascal Obong Bessong²², Maharaj Kishan Bhan²³, Nita Bhandari²⁴, Santosh K. Bhargava²⁵, Zulfiqar A. Bhutta²⁶, Robert E. Black²⁷, Ladaporn Bodhidatta²⁸, Delia Carba²⁹, Ines Gonzalez Casanova³⁰, William Checkley²⁷, Jean E. Crabtree³¹, Kathryn G. Dewey³², Christopher P. Duggan³³, Caroline H. D. Fall³⁴, Abu Syed Golam Faruque³⁴, Wafaie W. Fawzi³⁵, José Quirino da Silva Filho³⁶, Robert H. Gilman²⁷, Richard L. Guerrant³⁷, Rashidul Haque¹⁴, Sonja Y. Hess³⁸, Eric R. Houpt³⁷, Jean H. Humphrey³⁷, Najeeha Talat Iqbal¹⁵, Elizabeth Yakes Jimenez^{38,39}, Jacob John⁴⁰, Sushil Matthew John⁴¹, Gagandeep Kang⁴², Margaret Kosek³⁷, Michael S. Kramer^{43,44}, Alain Labrique⁹, Nanette R. Lee²⁹, Aldo Angelo Moreira Lima³⁶, Mustafa Mahfuz¹⁴, Tjale Cloupas Mahopo⁴⁵, Kenneth Maleta⁴⁶, Dharma S. Manandhar⁴⁷, Karim P. Manji⁴⁸, Reynaldo Martorell³⁰, Sarmila Mazumder²⁴, Estomih Mduma⁴⁹, Venkata Raghava Mohan⁴⁰, Sophie E. Moore^{50,51}, Ishita Mostafa¹⁴, Robert Ntozini⁵², Mzwakhe Emanuel Nyathi⁵³, Maribel Paredes Olortegui⁵⁴, William A. Petri³⁷, Prasanna Samuel Premkumar⁴⁰, Andrew M. Prentice⁵¹, Harshpal Singh Sachdev⁵⁵, Kamran Sadiq¹⁵, Rajiv Sarkar⁴⁰, Naomi M. Saville⁵⁶, Saijuddin Shaikh¹⁶, Bhim P. Shrestha⁵⁷, Sanjaya Kumar Shrestha⁵⁸, Alberto Melo Soares⁵⁹, Bakary Sonko⁶¹, Aryeh D. Stein⁵⁰, Erling Svensen⁵⁹, Sana Syed^{15,37}, Fayaz Umrani¹⁵, Honorine D. Ward⁶⁰, Keith P. West Jr⁹, Lee Shu Fune Wu⁹, Seungmi Yang⁴³ & Pablo Penataro Yori³⁷

¹²Department of Public Health and Primary Care, Ghent University, Ghent, Belgium. ¹³Department of Nutrition, University of North Carolina at Chapel Hill, Chapel Hill, NC, USA. ¹⁴International Centre for Diarrhoeal Disease Research, Bangladesh, Dhaka, Bangladesh. ¹⁵Department of Pediatrics and Child Health, The Aga Khan University, Karachi, Pakistan. ¹⁶JiViTA Project, John Hopkins Bangladesh, Rangpur, Bangladesh. ¹⁷Center for Child, Adolescent, and Maternal Health Research, Department of Medicine and Health Technology, Tampere University, Tampere, Finland. ¹⁸Tampere University Hospital, Tampere, Finland. ¹⁹World Health Organization, Geneva, Switzerland. ²⁰Center of Data and Knowledge Integration for Health, Fundação Oswaldo Cruz, Salvador, Brazil. ²¹UNICEF, New York, NY, USA. ²²HIV/AIDS & Global Health Research Programme, University of Venda, Thohoyandou, South Africa. ²³Indian Institute of Technology, New Delhi, India. ²⁴Centre for Health Research and Development, Society for Applied Studies, New Delhi, India. ²⁵Sunder Lal Jain Hospital, New Delhi, India. ²⁶Centre of Excellence in Women & Child Health, Institute for Global Health & Development, The Aga Khan University, Karachi, Pakistan. ²⁷Johns Hopkins University Bloomberg School of Public Health, Baltimore, MD, USA. ²⁸Armed Forces Research Institute of Medical Sciences, Bangkok, Thailand. ²⁹USC Office of Population Studies Foundation Inc., University of San Carlos, Cebu, The Philippines. ³⁰Rollins School of Public Health, Emory University, Atlanta, GA, USA. ³¹Leeds Institute for Medical Research, St. James's University Hospital, University of Leeds, Leeds, UK. ³²Department of Nutrition and Institute for Global Nutrition, University of California Davis, Davis, CA, USA. ³³Center for Nutrition, Boston Children's Hospital, Boston, MA, USA. ³⁴MRC Lifecourse Epidemiology Centre, University of Southampton, Southampton, UK. ³⁵Department of Global Health and Population, Harvard TH Chan School of Public Health, Boston, MA, USA. ³⁶Federal University of Ceará, Fortaleza, Brazil. ³⁷University of Virginia, Charlottesville, VA, USA. ³⁸Department of Pediatrics, University of New Mexico Health Sciences Center, Albuquerque, NM, USA. ³⁹Department of Internal Medicine, University of New Mexico Health Sciences Center, Albuquerque, NM, USA. ⁴⁰Christian Medical College, Vellore, India. ⁴¹Low Cost Effective Care Unit, Christian Medical College, Vellore, India. ⁴²Translational Health Science and Technology Institute, Faridabad, India. ⁴³McGill University, Montreal, Quebec, Canada. ⁴⁴McGill University Health Centre, Montreal, Quebec, Canada. ⁴⁵Department of Nutrition, School of Health Sciences, University of Venda, Thohoyandou, South Africa. ⁴⁶School of Public Health and Family Medicine, College of Medicine, University of Malawi, Zomba, Malawi. ⁴⁷Mother and Infant Research Activities, Kathmandu, Nepal. ⁴⁸Department of Pediatrics and Child Health, Muhimbili University School of Health and Allied Sciences, Dar es Salaam, Tanzania. ⁴⁹Haydom Lutheran Hospital, Haydom, Tanzania. ⁵⁰Department of Women and Children's Health, King's College London, London, UK. ⁵¹MRC Unit The Gambia at London School of Hygiene and Tropical Medicine, Banjul, The Gambia. ⁵²Zvitambo Institute for Maternal and Child Health Research, Harare, Zimbabwe. ⁵³Department of Animal Sciences, School of Agriculture, University of Venda, Thohoyandou, South Africa. ⁵⁴AB PRISMA, Lima, Peru. ⁵⁵Department of Pediatrics and Clinical Epidemiology, Sitaram Bhartiya Institute of Science and Research, New Delhi, India. ⁵⁶Institute for Global Health, University College London, London, UK. ⁵⁷Health Research and Development Forum, Kathmandu, Nepal. ⁵⁸Walter Reed/AFRIMS Research Unit, Kathmandu, Nepal. ⁵⁹Haukeland University Hospital, Bergen, Norway. ⁶⁰Tufts Medical Center, Tufts University School of Medicine, Boston, MA, USA.

Methods

The analysis was pre-specified at <https://www.synapse.org/#!Synapse:syn11855121/wiki/513724>.

Study designs and inclusion criteria

We included all longitudinal observational studies and randomized trials available through the Ki project on April 2018 that met five inclusion criteria (Extended Data Fig. 1) as follows: studies that were conducted in LMICs (children in these countries have the largest burden linear growth faltering and are the key target population for preventive interventions); studies that had a median year of birth in 1990 or later (this restriction resulted in a set of studies spanning the period from 1987 to 2017 and excluded older studies that are less applicable to current policy dialogues); studies that enrolled children between birth and age 24 months and measured their length and weight repeatedly over time (we were principally interested in growth faltering during the first 1,000 days (including gestation), thought to be the key window for linear growth faltering); studies that did not restrict enrolment to acutely ill children (our focus on descriptive analyses led us to target, to the extent possible, the general population; we thus excluded some studies that exclusively enrolled acutely ill children, such as children who presented to hospital with acute diarrhoea or who were severely malnourished); studies that collected anthropometry measurements at least every 3 months (to ensure that we adequately captured incident episodes and recovery).

Thirty-two longitudinal cohorts in 14 countries followed between 1987 and 2017 met inclusion criteria. All children from each eligible cohort were included in the study. There was no evidence of secular trends in LAZ (Supplementary Note 4). We calculated cohort measurement frequency as the median days between measurements. If randomized trials found effects on growth within the intervention arms, the analyses were limited to the control arm. We included all measurements under 24 months of age, assuming months were 30.4167 days. We excluded extreme measurements of $LAZ > 6$ or $LAZ < -6$ following WHO growth standard recommendations³⁰. In many studies, investigators measured length shortly after birth because deliveries were at home, but most measurements were within the first 7 days of life (Supplementary Note 5); for this reason, we grouped measurements in the first 7 days as birth measurements. Gestational age was measured in only five cohorts that measured birth length (three cohorts measured it by recall of last menstrual period; one measured it by newborn examination; one measured it by ultrasound); thus, we did not attempt to exclude preterm infants from the analyses.

Quality assurance

The Ki data team assessed the quality of individual cohort datasets by checking the range of each variable for outliers and values that were not consistent with expectation. z-scores were calculated using the median of replicate measurements and the 2006 WHO child growth standards³⁰. In a small number of cases, a child had two anthropometry records at the same age, in which case we used the mean of the records. Analysts reviewed bivariate scatter plots to check for expected correlations (for example, length by height; length, height or weight by age; length, height or weight by corresponding z-score). Once the individual cohort data were mapped to a single harmonized dataset, analysts conducted an internal peer review of published articles for completeness and accuracy. Analysts contacted contributing investigators to seek clarification about potentially erroneous values in the data and revised the data as needed.

Outcome definitions

We used the following summary measures in the analysis.

Incident stunting episodes. Incident stunting episodes were defined as a change in LAZ from above -2 z in the previous measurement to

below -2 z in the current measurement. Similarly, we defined severe stunting episodes using the cutoff of -3 z. Children were considered at risk of stunting at birth, so children born stunted were considered to have an incident episode of stunting at birth. Children were also assumed to be at risk of stunting at the first measurement in non-birth cohorts and trials. Children whose first measurement occurred after birth were assumed to have experienced stunting onset at the age half-way between birth and the first measurement. Most children were less than 5 days of age at their first measurement (Supplementary Note 5).

Incidence proportion. We calculated the incidence proportion of stunting during a defined age range (for example, 3–6 months) as the proportion of children at risk of becoming stunted who became stunted during the age range (the onset of new episodes).

Changes in stunting status. Changes in stunting status were classified using the following categories—never stunted: children with $LAZ \geq -2$ at previous ages and the current age; no longer stunted: children who previously reversed their stunting status with $LAZ \geq -2$ at the current age; stunting reversal: children with $LAZ < -2$ at the previous age and $LAZ \geq -2$ at the current age; newly stunted: children whose LAZ was previously always ≥ -2 and with $LAZ < -2$ at the current age; stunting relapse: children who were previously stunted with $LAZ \geq -2$ at the previous age and $LAZ < -2$ at the current age; still stunted: children whose LAZ was < -2 at the previous and current age.

Growth velocity. Growth velocity was calculated as the change in length in centimetres between two time points divided by the number of months between the time points. We compared measurements of change in length in centimetres per month to the WHO child growth standards for linear growth velocity³⁶. We also estimated within-child rates of change in LAZ per month.

Measurement frequency

Analyses of incidence and growth velocity (Figs. 3 and 5) included cohorts with at least quarterly measurements to include as many cohorts as possible. Analyses of stunting reversal (Fig. 4) were restricted to cohorts with at least monthly measurements to allow evaluation of changes in stunting status with higher resolution.

Subgroups of interest

We stratified the above outcomes within the following subgroups: child age, grouped into one- or three-month intervals (depending on the analysis); the region of the world (Asia, sub-Saharan Africa, Latin America); sex of child; and the combinations of those categories. We obtained country-level data on the percentage of gross domestic product devoted to healthcare goods and spending from the United Nations Development Programme⁵⁷ and the percentage of the country living on less than US\$1.90 per day and under-5 mortality rates from the World Bank⁵⁸. In years without available data, we linearly interpolated values from the nearest years with available data and extrapolated values within 5 years of available data using linear regression models based on all available years of data. We also considered additional subgroups, including decade in which data were collected, gross domestic product⁵⁸, gender development index⁵⁷, gender inequality index⁵⁷, coefficient of human inequality⁵⁸ and the Gini coefficient⁵⁸. However, for these variables, subgroup levels were strongly correlated with geographic region, making it impossible to separate the effects of each (Supplementary Table 3). Thus, we did not conduct subgroup analyses for these variables.

Statistical analysis

All analyses were conducted in R version 3.4.2 (ref. 59).

Estimation of mean LAZ by age in DHS and Ki cohorts. We downloaded standard DHS individual recode files for each country from the

DHS Program website (<https://dhsprogram.com/>). We used the most recent standard DHS datasets for the individual women's, household, and height and weight datasets from each country. We obtained variables for country code, sample weight, cluster number, primary sampling unit and design stratification from the women's individual survey recode files. From the height and weight dataset, we used standard recode variables corresponding to the 2006 WHO growth standards for height-for-age.

After excluding missing observations, restricting to measurements of children of 0–24 months of age and restricting to z-scores within WHO-defined plausible values, surveys were collected from 1996 to 2018 in countries that overlapped with Ki cohorts with the exception of Guinea-Bissau because the DHS survey was not conducted there during the study period (Extended Data Table 1).

We classified countries into regions (South Asia, Latin America and Africa) using the WHO regional designations with the exception of the classification for Pakistan, which we included in South Asia to be consistent with previous linear growth studies using DHS²⁰. One included cohort was from Belarus, and we chose to exclude it from region-stratified analyses as it was the only European study.

We estimated the age-stratified mean from ages of 0 to 24 months within each DHS survey, accounting for the complex survey design and sampling weights. We then pooled estimates of mean LAZ for each age in months across countries using a fixed-effects estimator (details below). We compared DHS estimates with mean LAZ by age in the Ki study cohorts, which we estimated using penalized cubic splines with bandwidth chosen using generalized cross-validation⁶⁰. We used splines to estimate age-dependent mean LAZ in the Ki study cohorts to smooth any age-dependent variation in the mean caused by less frequently measured cohorts.

Distribution models. To investigate how the mean, standard deviation and skewness of LAZ distributions varied by age, we fitted linear models with skew-elliptical error terms using maximum-likelihood estimation. We fitted models separately by cohort.

Fixed- and random-effects models. Several analyses pooled results across study cohorts. We estimated each age-specific mean using a separate estimation and pooling step. We first estimated the mean in each cohort, and then pooled age-specific means across cohorts, while allowing for a cohort-level random effect. This approach enabled us to include the most information possible for each age-specific mean, while accommodating slightly different measurement schedules across the cohorts. Each cohort's data contributed only to LAZ or stunting incidence estimates at the ages for which it contributed data.

The primary method of pooling was using random-effects models. This modelling approach assumes that studies are randomly drawn from a hypothetical population of longitudinal studies that could have been conducted on children's linear growth in the past or future. We also fitted fixed-effects models as a sensitivity analysis (Supplementary Note 6); inferences about estimates from fixed-effects models are restricted to only the included studies⁶¹.

Random-effects models assume that the true population outcomes θ are normally distributed ($\theta \sim N(\mu, \tau^2)$), in which N indicates a normal distribution and θ has mean μ and variance τ^2 . To estimate outcomes in this study, the random-effects model is defined as follows for each study in the set of $i = 1, \dots, k$ studies:

$$y_i = \mu + u_i + e_i \quad (1)$$

in which y_i is the observed outcome in study i , u_i is the random effect for study i , μ is the estimated outcome for study i , and e_i is the sampling error within study i . The model assumes that $u_i \sim N(0, \tau^2)$ and $e_i \sim N(0, v_i)$, in which v_i is the study-specific sampling variance. We fitted random-effects models using the restricted maximum-likelihood

estimator^{31,32}. If a model failed to converge, we attempted to fit models with a maximum-likelihood estimator. If random-effects models failed to converge owing to the number of stunting cases being zero, we used a fixed-effects estimator. The quantity μ is the estimated mean outcome in the hypothetical population of studies (that is, the estimated outcome pooling across study cohorts).

We also fitted inverse-variance-weighted fixed-effects models defined as follows:

$$\bar{\theta}_w = \frac{\sum_{i=1}^k w_i \theta_i}{\sum_{i=1}^k w_i} \quad (2)$$

in which $\bar{\theta}_w$ is the weighted mean outcome in the set of k included studies, and w_i is a study-specific weight, defined as the inverse of the study-specific sampling variance v_i . θ_i is the estimate from study i .

For both types of outcome, we pooled binary outcomes on the logit scale and then back-transformed estimates after pooling to constrain confidence intervals between 0 and 1. Although the probit transformation more closely resembles common distributions for physiologic variables, in practice the logit transformation produces nearly identical estimates and is more convenient for estimation. For cohort-stratified analyses, which did not pool across studies, we estimated 95% confidence intervals using the normal approximation (Supplementary Note 7).

Estimation of incidence. We estimated incidence as defined above in 3-month age intervals within specific cohorts and pooled within region and across all studies (Fig. 3). Pooled analyses used random-effects models for the primary analysis and fixed-effects models for sensitivity analyses as described above.

Estimation of changes in stunting status. To assess fluctuations in stunting status over time, we conducted an analysis among cohorts with at least monthly measurements from birth to the age of 15 months to provide sufficient granularity to capture changes in stunting status. We estimated the proportion of children in each stunting category defined in the section 'Changes in stunting status' at each month from birth to the age of 15 months. To ensure that percentages summed to 100%, we present results that were not pooled using random effects. Analyses using random effects produced similar results (Supplementary Note 6.3).

To examine the distribution of LAZ among children with stunting reversal, we created subgroups of children who experienced stunting reversal at ages 3, 6, 9 and 12 months and then summarized the distribution of the children's LAZ at ages 6, 9, 12 and 15 months. Within each age interval, we estimated the mean difference in LAZ at older ages compared to the age of stunting reversal and estimated 95% confidence intervals for the mean difference. Pooled analyses used random-effects models for the primary analysis and fixed-effects models for sensitivity analyses as described above.

Linear growth velocity. We estimated linear growth velocity within 3-month age intervals stratified by sex, pooling across study cohorts (Fig. 5) as well as stratified by geographic region (Extended Data Fig. 10) and study cohort (Supplementary Note 7.4). Analyses included cohorts that measured children at least quarterly. We included measurements within a 2-week window around each age in months to account for variation in the age of each length measurement. Pooled analyses used random-effects models for the primary analysis and fixed-effects models for sensitivity analyses as described above (Supplementary Note 6.4).

Sensitivity analyses

We conducted three sensitivity analyses. First, to assess whether inclusion of PROBIT, the single European cohort, influenced our overall pooled inference, we repeated analyses excluding the PROBIT cohort.

Article

Results were very similar with and without the PROBIT cohort (Supplementary Note 8). Second, to explore the influence of differing numbers of cohorts contributing data at different ages, we conducted a sensitivity analysis in which we subset data to cohorts that measured anthropometry monthly from birth to the age of 24 months ($n = 21$ cohorts in 10 countries, 11,424 children; Supplementary Note 3). Third, we compared estimates pooled using random-effects models presented in the main text with estimates pooled using fixed-effects inverse-variance-weighted models. The random-effects approach was more conservative in the presence of study heterogeneity (Supplementary Note 6).

Inclusion and ethics

This study analysed data that were collected in 14 LMICs that were assembled by the Bill & Melinda Gates Foundation Ki initiative. Datasets are owned by the original investigators that collected the data. Members of the Ki Child Growth Consortium were nominated by each study's leadership team to be representative of the country and study teams that originally collected the data. Consortium members reviewed their cohort's data within the Ki database to ensure external and internal consistency of cohort-level estimates. Consortium members provided substantial input on the statistical analysis plan, interpretation of results and manuscript writing. Per the request of consortium members, the manuscript includes cohort-level and regional results to maximize the utility of the study findings for local investigators and public health agencies. Analysis code has been published with the manuscript to promote transparency and extensions of our research by local and global investigators.

Reporting summary

Further information on research design is available in the Nature Portfolio Reporting Summary linked to this article.

Data availability

The data that support the findings of this analysis are a combination of data from multiple principal investigators and institutions. The data are available, upon reasonable request, to the requestor by contacting these individual principal investigators. The following link lists the individuals and their respective contact information that may be used to request access to the data: <https://www.synapse.org/#!Synapse:syn51570682/wiki/>. The analysis dataset is at <https://www.synapse.org/#!Synapse:syn51570682/datasets/>. This dataset is access-controlled and not available publicly for privacy reasons.

Code availability

Replication scripts for this analysis are available at <https://zenodo.org/record/7937811> and <https://www.synapse.org/#!Synapse:syn51570682/>.

56. WHO Child Growth Standards: Growth Velocity Based on Weight, Length and Head Circumference: Methods and Development (WHO, 2009).
57. Human Development Reports (United Nations Development Programme, accessed 14 July, 2022); <https://hdr.undp.org/en/data>.
58. World Development Indicators (World Bank, accessed 14 July, 2022); <https://data.worldbank.org/indicator/SP.DYN.CBRT.IN>.
59. R Core Team R: A Language and Environment for Statistical Computing (R Foundation for Statistical Computing, 2019); <https://www.R-project.org/>.
60. Wood, S. N., Pya, N. & Säfken, B. Smoothing parameter and model selection for general smooth models. *J. Am. Stat. Assoc.* **111**, 1548–1563 (2016).
61. Hedges, L. V. & Vevea, J. L. Fixed- and random-effects models in meta-analysis. *Psychol. Methods* **3**, 486–504 (1998).

Acknowledgements This research was financially supported by a global development grant (OPPI165144) from the Bill & Melinda Gates Foundation to the University of California, Berkeley. J.B.-C. acknowledges funding from the National Institute of Allergy and Infectious Diseases under award K01AI141616. J.B.-C. is a Chan Zuckerberg Biohub investigator. We also thank the following collaborators on the included cohorts and trials for their contributions to study planning, data collection and analysis: M. Sharif, S. Kerio, Urosa, Alveen, S. Hussain, V. Paudel, A. Costello, B. Torun, L. M. Locks, C. M. McDonald, R. Kupka, R. J. Bosch, R. Kisenge, S. Aboud, M. Wang, Azaduzzaman, A. A. Shamim, R. Haque, R. Klemm, S. Mehra, M. Mitra, K. Schulze, S. Taneja, B. Nayyar, V. Suri, P. Khokhar, J. E. Rohde, T. Kumar, J. Martines and all other members of the study staff and field teams. We also thank all study participants and their families for their important contributions.

Author contributions J.M.C., A.E.H., M.J.v.d.L. and B.F.A. obtained funding for the study. J.B.-C., B.F.A., A.M., J.M.C., A.E.H., M.J.v.d.L., P.C., K.H.B. and T.N. conceptualized the study. J.B.-C., B.F.A., A.M., J.M.C., A.E.H., M.J.v.d.L., P.C. and K.H.B. contributed to study design. J.B.-C., A.M., J.M.C., J.C., O.S., N.H., I. Malenica, A.E.H., M.J.v.d.L., K.H.B., P.C. and B.F.A. contributed to study methodology. Ki Child Growth Consortium members contributed data. J.B.-C., A.M., J.C., O.S., W. Cai, A.N., N.N.P., W.J., E.J., E.O.C., S.R., A.S., S.D., N.H., I. Malenica, H.L., R. Hafen, V.S., J.H. and T.N. curated the data. J.B.-C., A.M., J.C., O.S., W. Cai, N.H., I. Malenica, H.L., A.N., N.N.P., W.J., E.J., E.O.C., S.D., N.H., V.S. and B.F.A. analysed the data. J.B.-C., A.M., A.N., N.N.P., S.D., A.S., J.C., R. Hafen, E.J., K.H.B., P.C. and B.F.A. conducted data visualization. J.B.-C., A.M. and B.F.A. wrote the manuscript with input from all co-authors and Ki Child Growth Consortium members.

Competing interests T.N. is an employee of the Bill & Melinda Gates Foundation. P.C. is a former employee of the Bill & Melinda Gates Foundation, and K.H.B. is a former employee of and occasional consultant to the Bill & Melinda Gates Foundation. J.C., V.S., R. Hafen and J.H. work as research contractors financially supported by the Bill & Melinda Gates Foundation.

Additional information

Supplementary information The online version contains supplementary material available at <https://doi.org/10.1038/s41586-023-06418-5>.

Correspondence and requests for materials should be addressed to Jade Benjamin-Chung or Benjamin F. Arnold.

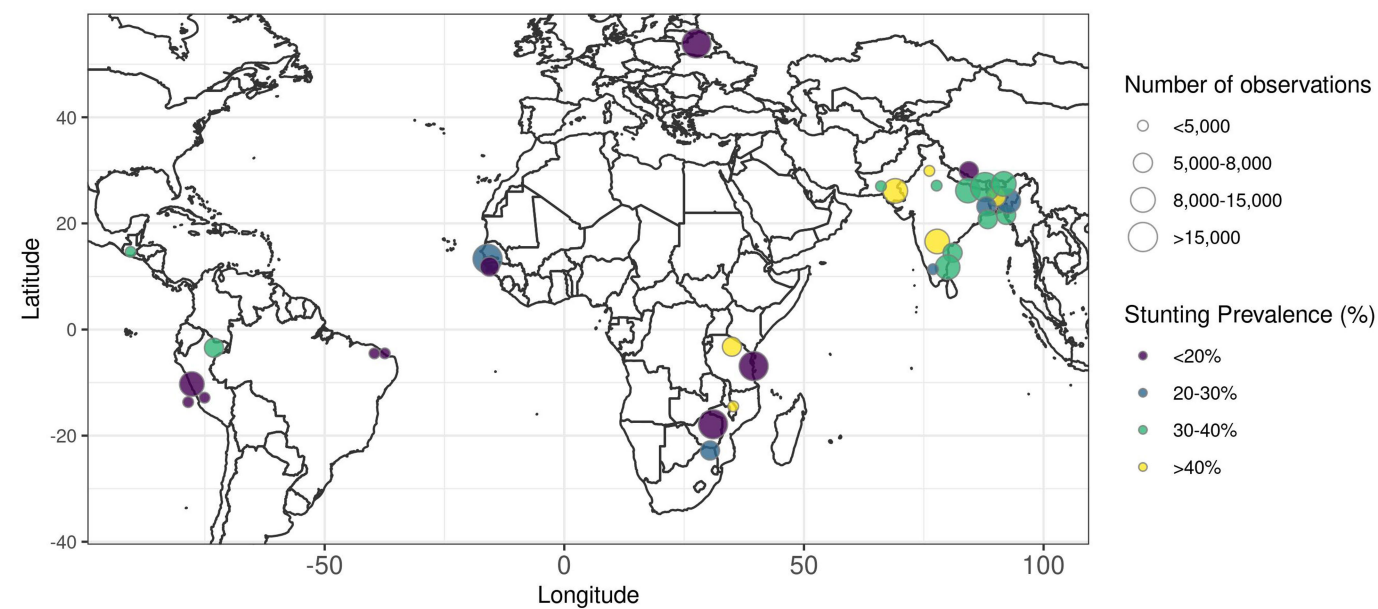
Peer review information Nature thanks Nicholas Kassebaum, Zhiwei Zhang and the other, anonymous, reviewer(s) for their contribution to the peer review of this work. Peer reviewer reports are available.

Reprints and permissions information is available at <http://www.nature.com/reprints>.

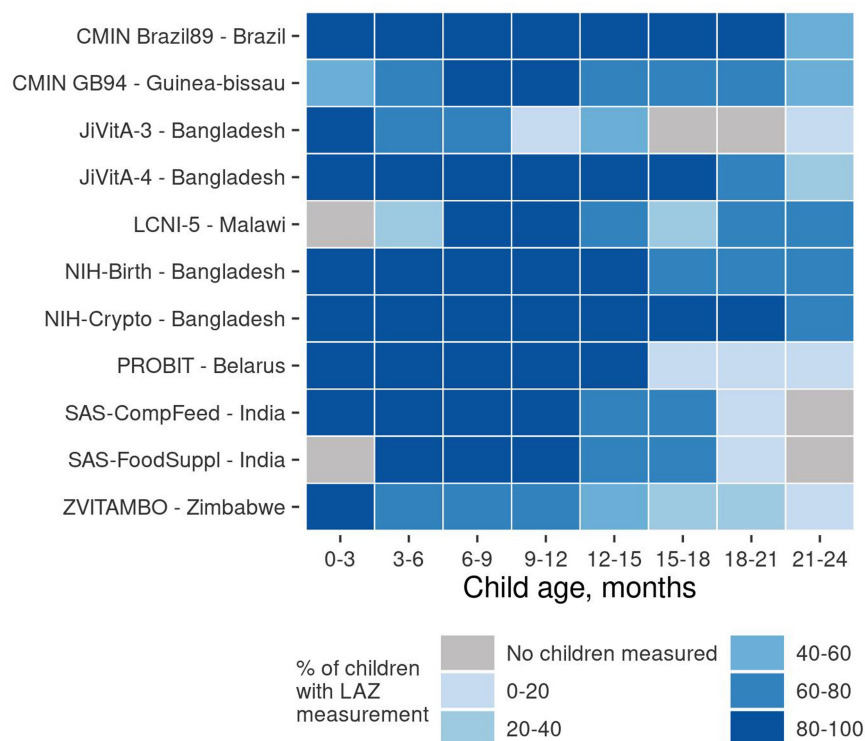


Extended Data Fig. 1 | *ki* cohort selection. Analyses focused on longitudinal cohorts to enable the estimation of prospective incidence rates and growth velocity. In April 2018, there were 97 longitudinal studies on GHAP. From this set, we applied five inclusion criteria to select cohorts for analysis. Our rationale for each criterion follows. (1) Studies were conducted in lower income or middle-income countries. (2) Studies had a median year of birth in 1990 or

later. (3) Studies measured length and weight between birth and age 24 months. (4) Studies did not restrict enrollment to acutely ill children. (5) Studies collected anthropometry measurements at least every 3 months. Each colored cell indicates a criterion that was met. For studies that met all inclusion criteria, all cells in their row are colored. The bars at the top of the plot show the number of observations in each study that met each inclusion criterion by region.

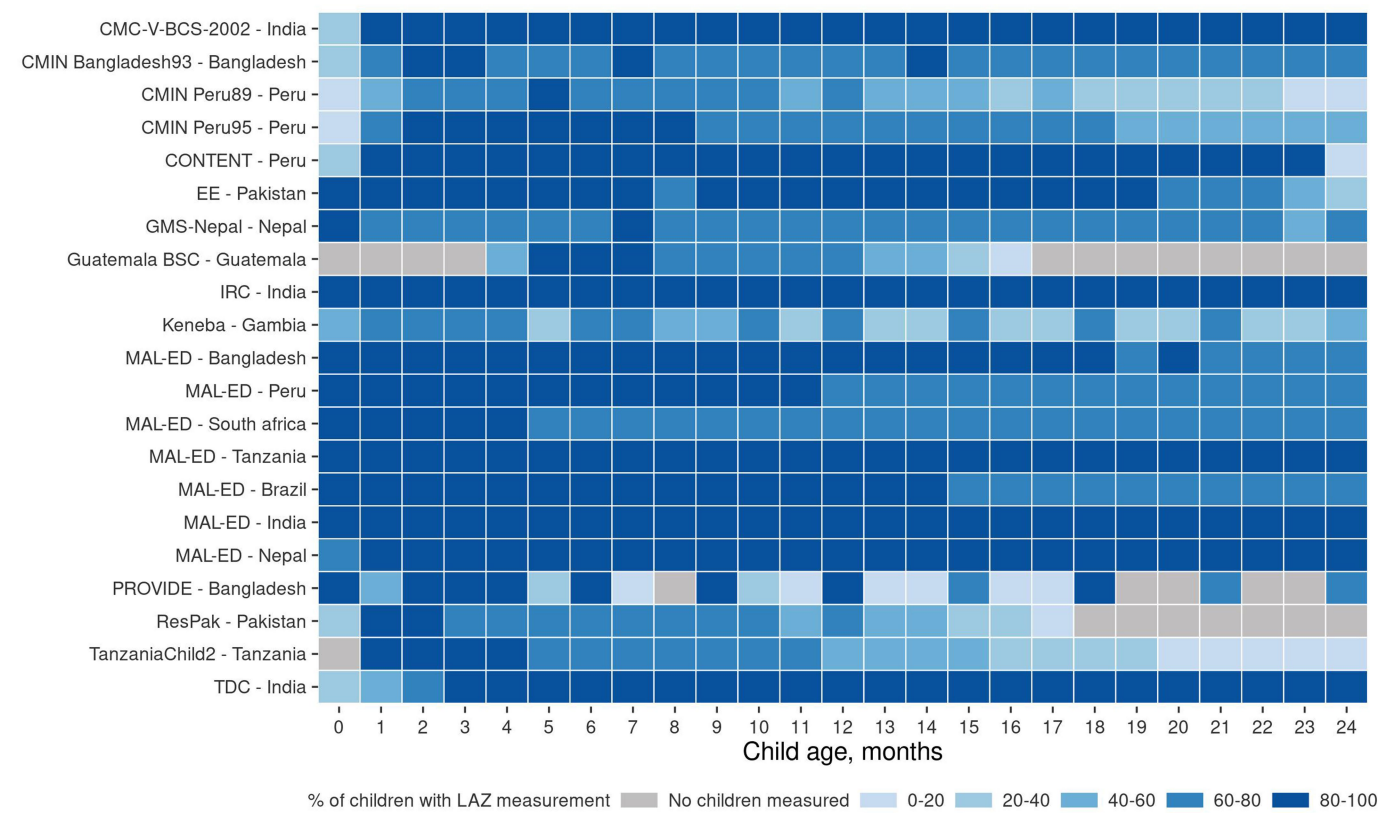


Extended Data Fig. 2 | Stunting prevalence by geographic location of *ki* cohorts. Locations are approximate, represented as nation-level centroids and jittered slightly for display. The size of each centroid indicates the number of observations contributing to each estimate. The color of each centroid indicates the level of stunting prevalence.



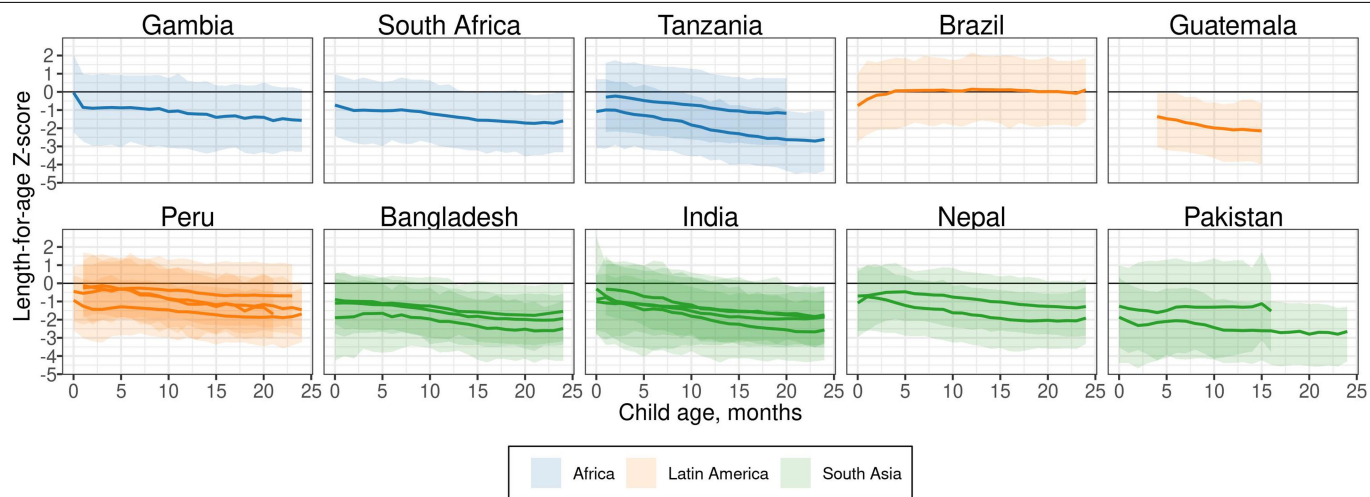
Extended Data Fig. 3 | Percentage of enrolled children measured in each *ki* cohort with quarterly measurements. Each colored cell indicates the percentage of children with a length-for-age Z-score measurement for a given

cohort at a particular child age range. Gray cells indicate that no children had a length-for-age Z-score measurement for that age.



Extended Data Fig. 4 | Percentage of enrolled children measured in each *ki* cohort with monthly measurements. Each colored cell indicates the percentage of children with a length-for-age Z-score measurement for a given

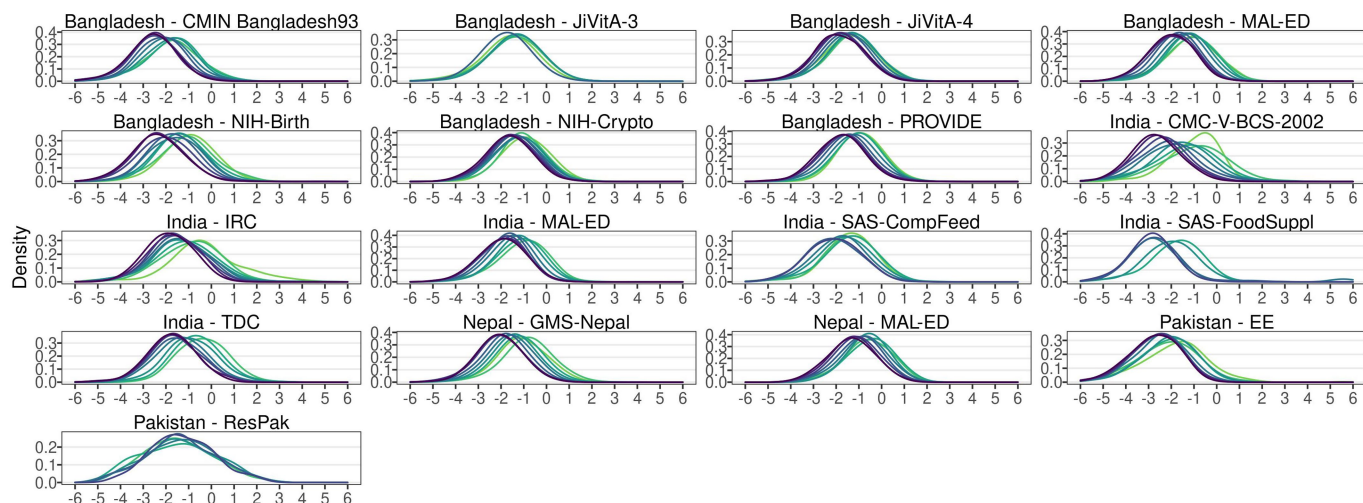
cohort at a particular child age. Gray cells indicate that no children had a length-for-age Z-score measurement for that age.



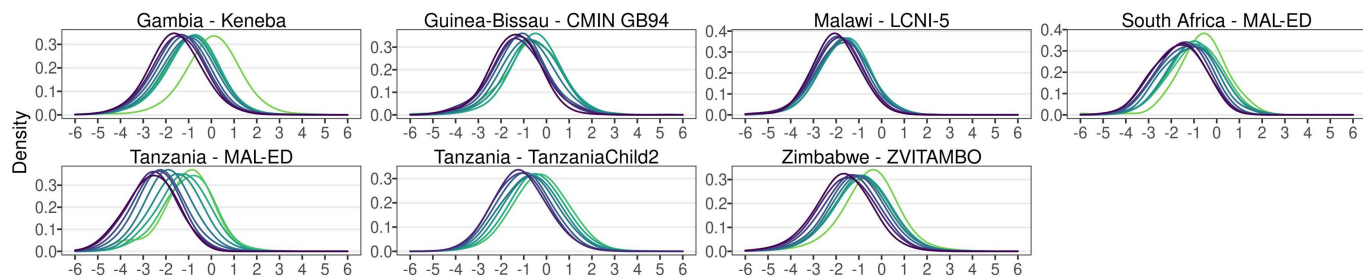
Extended Data Fig. 5 | Distribution of length-for-age Z-score by age. Mean, 5th and 95th percentile of length-for-age Z-score by age in *ki* longitudinal cohorts estimated with cubic splines in cohorts with at least monthly measurement.

The shaded bands span the 5th to the 95th percentile of length-for-age Z-score in each cohort. The solid line indicates the mean in each cohort at each age (N = 21 cohorts that measured children at least monthly, N = 11,424 children).

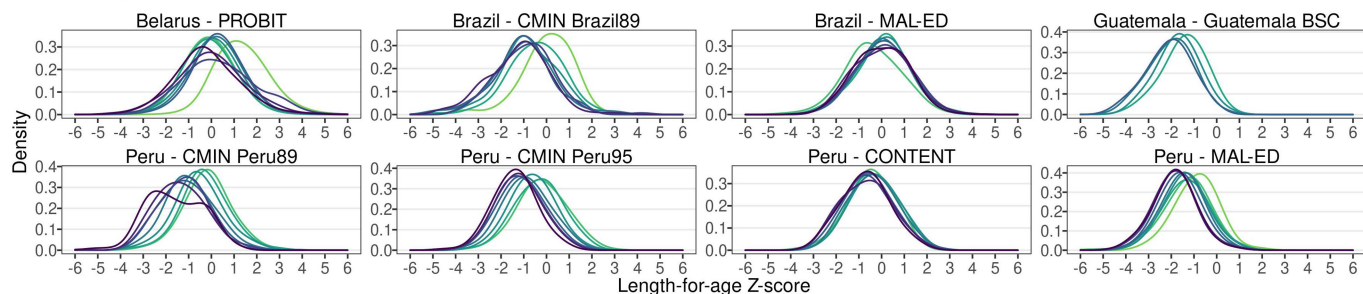
South Asia



Africa



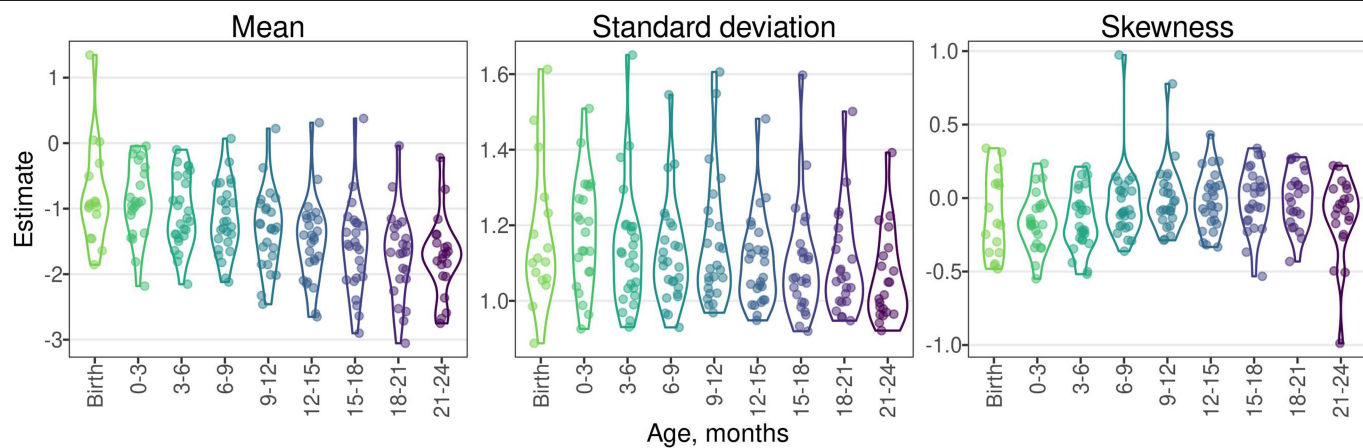
Europe and Latin America



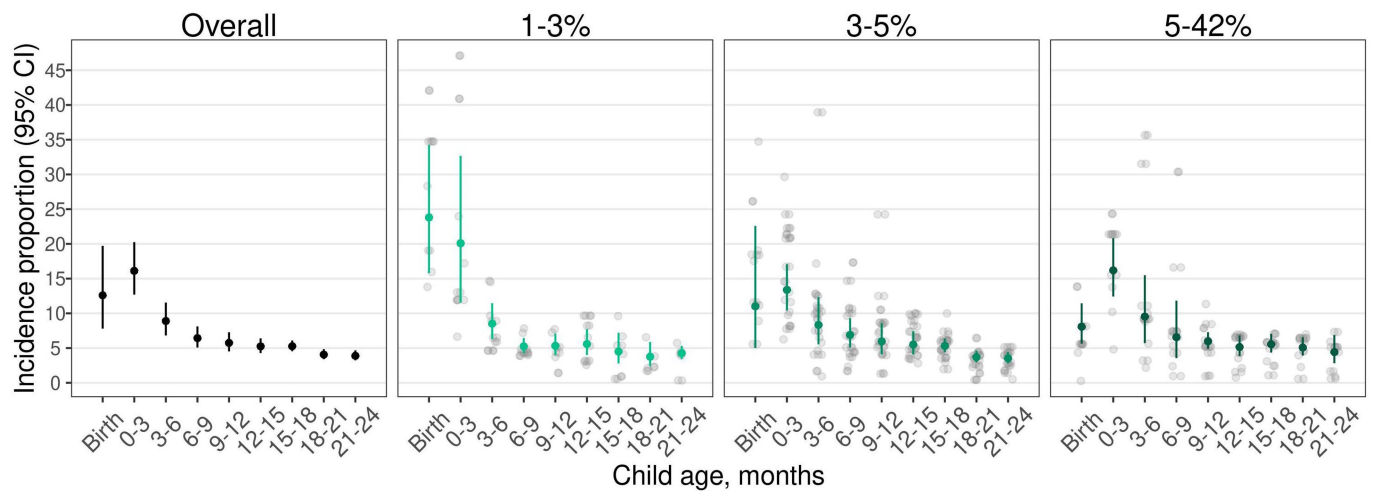
Age Birth 8 days-3 months 3-6 months 6-9 months 9-12 months 12-15 months 15-18 months 18-21 months 21-24 months

Extended Data Fig. 6 | Kernel density of length-for-age Z-score by age and cohort. In South Asia, includes data from 17 cohorts, 21,223 children, and 159,884 measurements. In Africa, includes 7 cohorts, 21,671 children, and

164,431 measurements. In Europe and Latin America, includes 8 cohorts, 9,746 children, and 88,143 measurements.

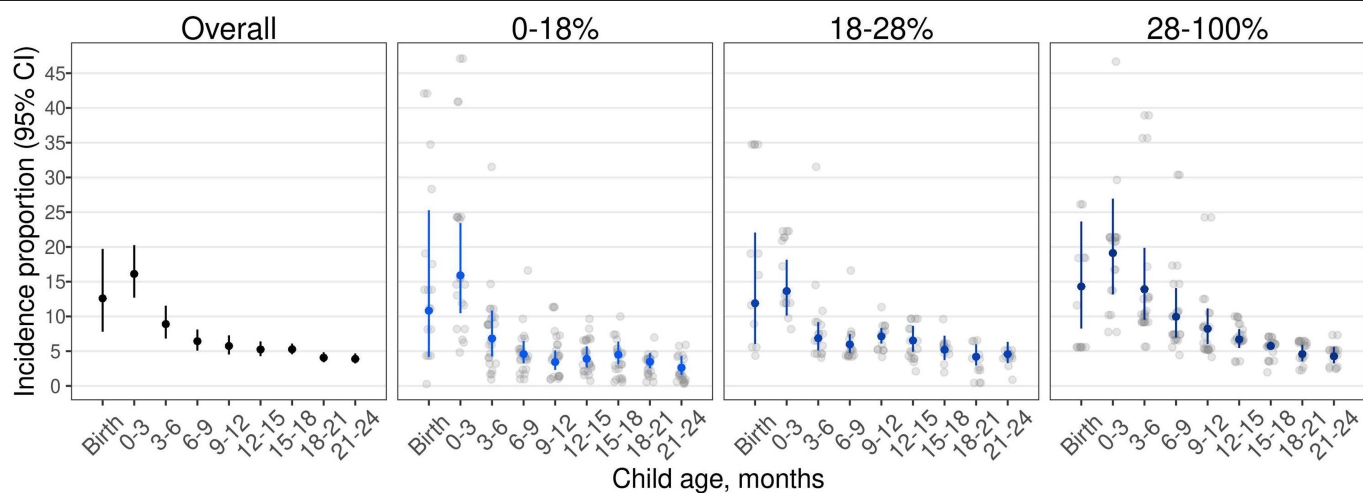


Extended Data Fig. 7 | Parametric mean, standard deviation, and Pearson's index of skewness estimates by age and cohort. Estimates were obtained from linear models with skew-elliptical error terms fit using maximum likelihood estimation. Includes 412,458 measurements from 52,640 children in 32 cohorts.



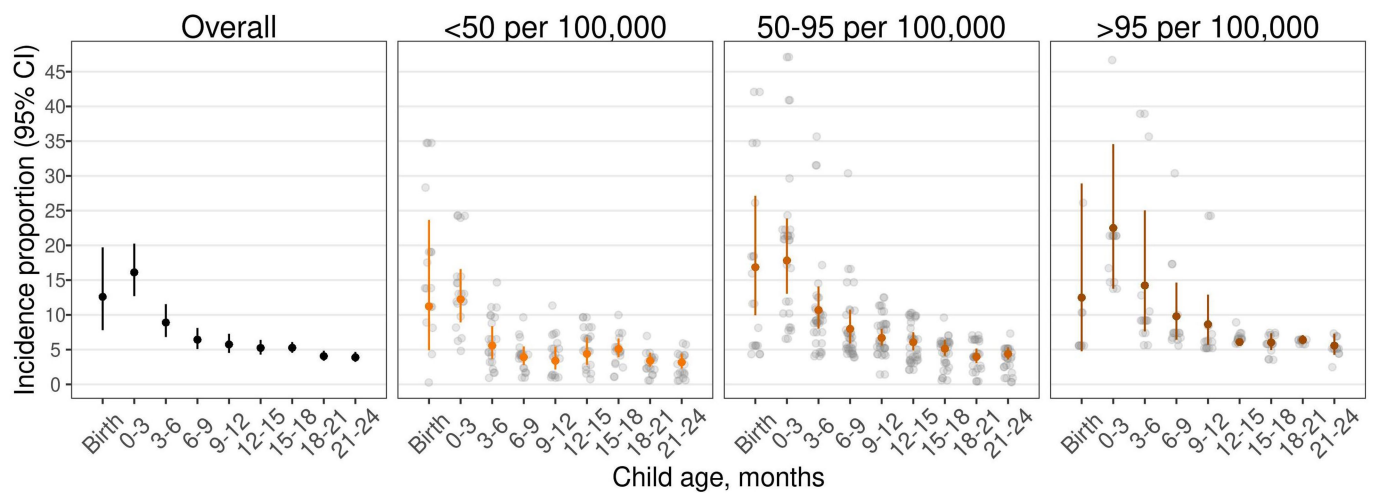
Extended Data Fig. 8 | Incidence of stunting by age and national health expenditures as a percentage of gross domestic product. Proportion of children experiencing incident stunting onset by national health expenditures as a percentage of gross domestic product (1–3%: N = 6–9 studies, N = 2,039–12,076 children; 3–5%: N = 11–19 studies, N = 4,467–16,030 children; 5–42%:

N = 5–8 studies, N = 5,423–15,578 children). “0–3” includes age 2 days up to 3 months. Analyses include cohorts with at least quarterly measurements; vertical bars indicate 95% confidence intervals. Gray points indicate cohort-specific estimates. Pooled results were derived from random effects models with restricted maximum likelihood estimation.



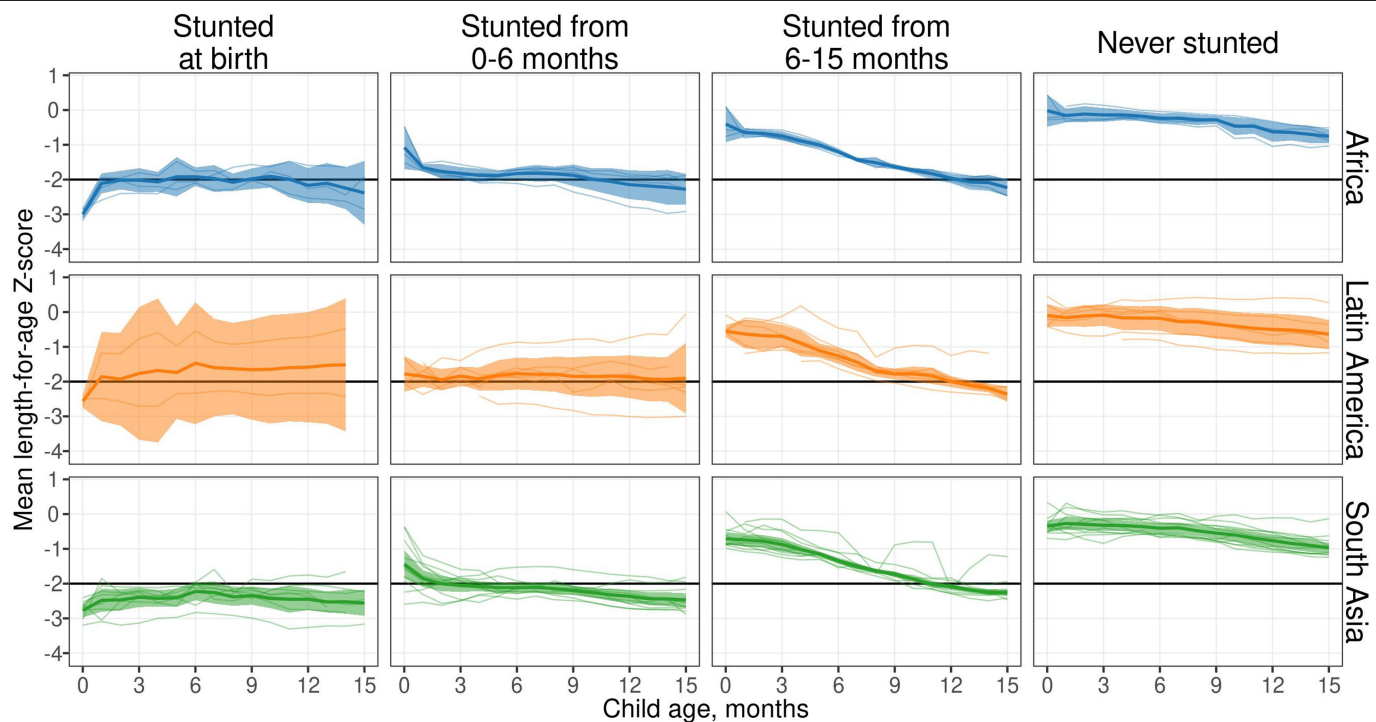
Extended Data Fig. 9 | Incidence of stunting by age and national percentage of individuals living on less than \$1.90 US per day. Proportion of children experiencing incident stunting onset by national percentage of individuals living on less than \$1.90 US per day (0–18%: N = 9–14 studies, N = 6,156–23,493 children; 18–28%: N = 7–10 studies, N = 1,602–14,639 children; 28–100%: N = 5–11

studies, N = 2,333–7,622 children). “0–3” includes age 2 days up to 3 months. Analyses include cohorts with at least quarterly measurements; vertical bars indicate 95% confidence intervals. Gray points indicate cohort-specific estimates. Pooled results were derived from random effects models with restricted maximum likelihood estimation.



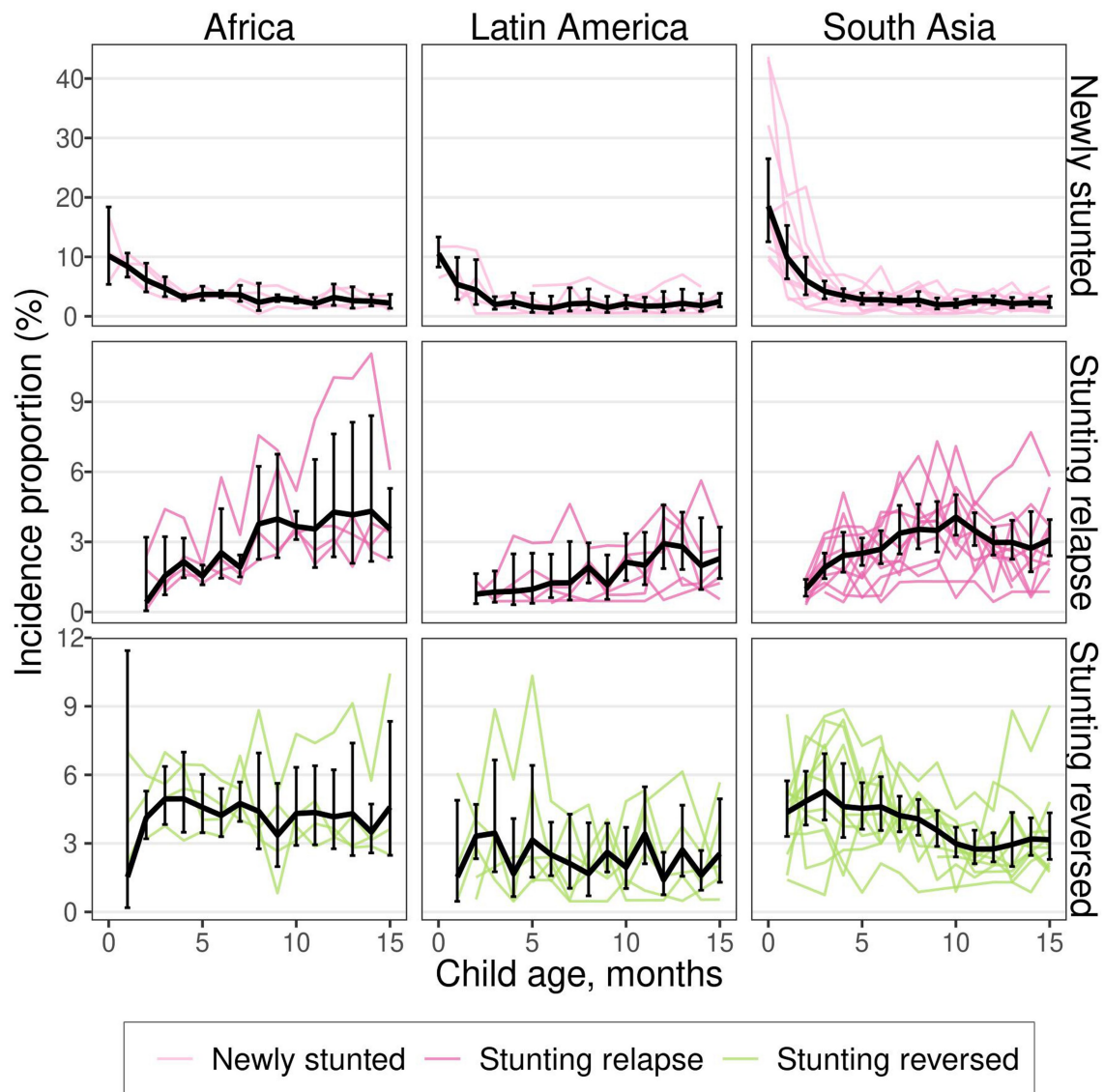
Extended Data Fig. 10 | Incidence of stunting by age and national under-5 mortality rate. Proportion of children experiencing incident stunting onset by national under-5 mortality rate (<50 per 100,000: N = 10–13 studies, N = 4,170–17,997 children; 50–95 per 100,000: N = 9–18 studies, N = 3,244–12,296 children; >95 per 100,000: N = 3–7 studies, N = 4,450–15,177 children). “0–3”

includes age 2 days up to 3 months. Analyses include cohorts with at least quarterly measurements; vertical bars indicate 95% confidence intervals. Gray points indicate cohort-specific estimates. Pooled results were derived from random effects models with restricted maximum likelihood estimation.



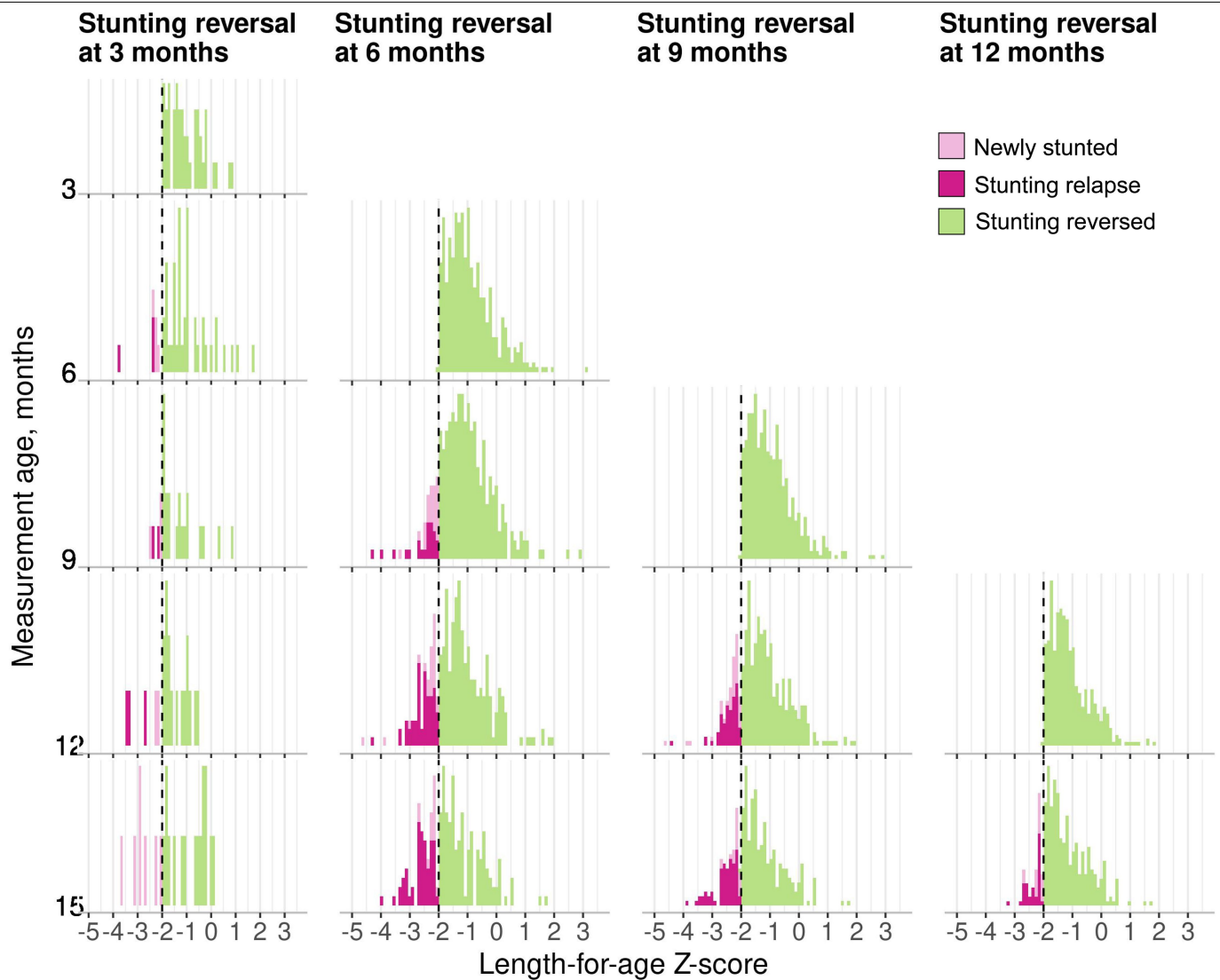
Extended Data Fig. 11 | Mean LAZ by age and region with 95% confidence intervals. Mean length-for-age Z-score (LAZ) stratified by age from birth to age 15 months (N = 21 cohorts that measured children at least monthly between birth and age 15 months, N = 11,243 children). “Never stunted” includes children

who did not become stunted by age 15 months. Shaded ribbons indicate 95% confidence intervals. Pooled results were derived from random effects models with restricted maximum likelihood estimation. Thinner lines indicate cohort-specific estimates.



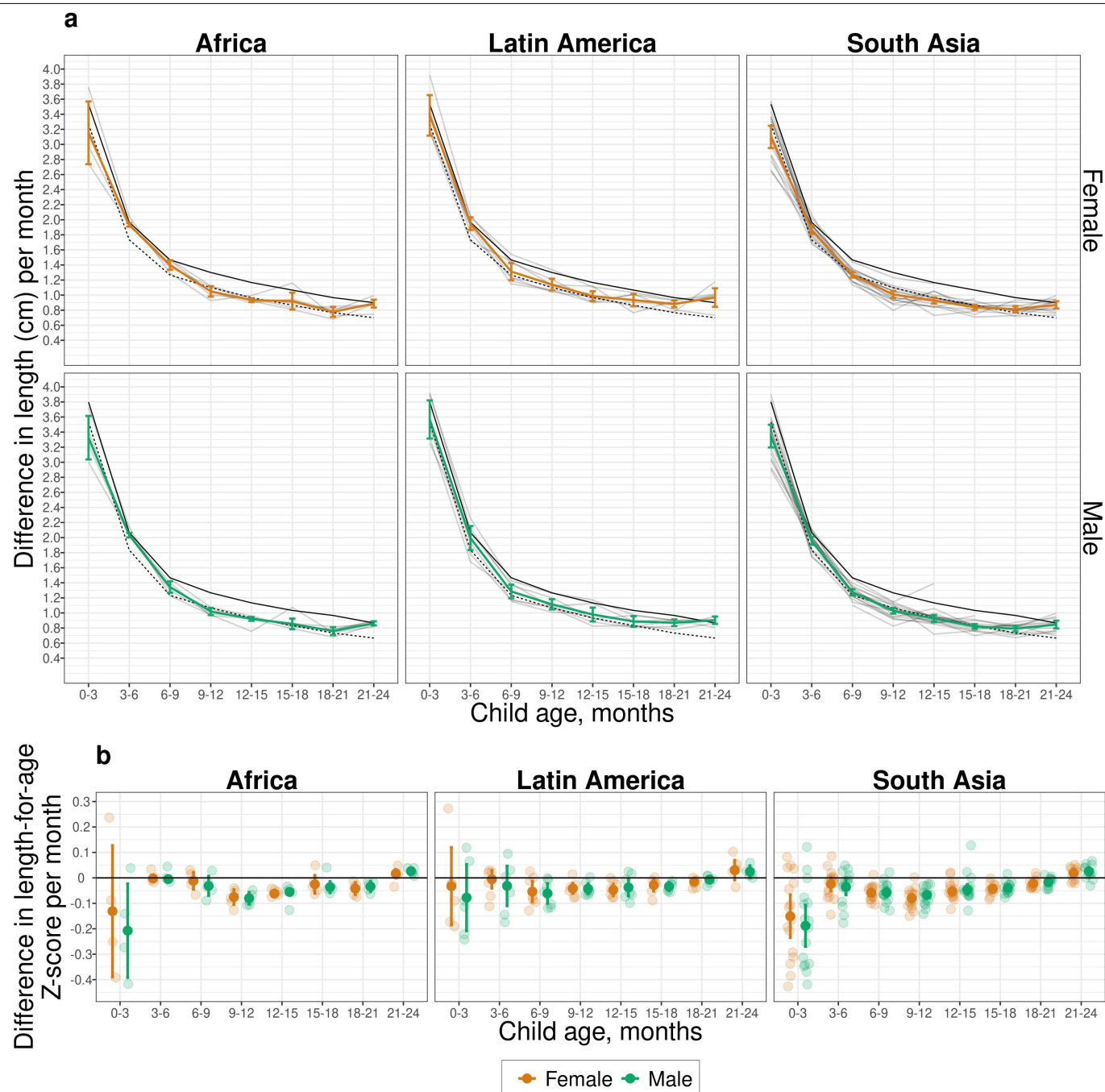
Extended Data Fig. 12 | Stunting reversal and relapse by region. Incidence proportion of new stunting, stunting relapse, and stunting reversal by age. The black line presents estimates pooled using random effects with restricted maximum likelihood estimation. Colored lines indicate cohort-specific

estimates. Vertical black error bars indicate 95% confidence intervals. Estimates include data from 21 cohorts in 10 countries with at least monthly measurement ($N = 11,435$) and are presented through age 15 months because in most cohorts, measurements were less frequent above 15 months.



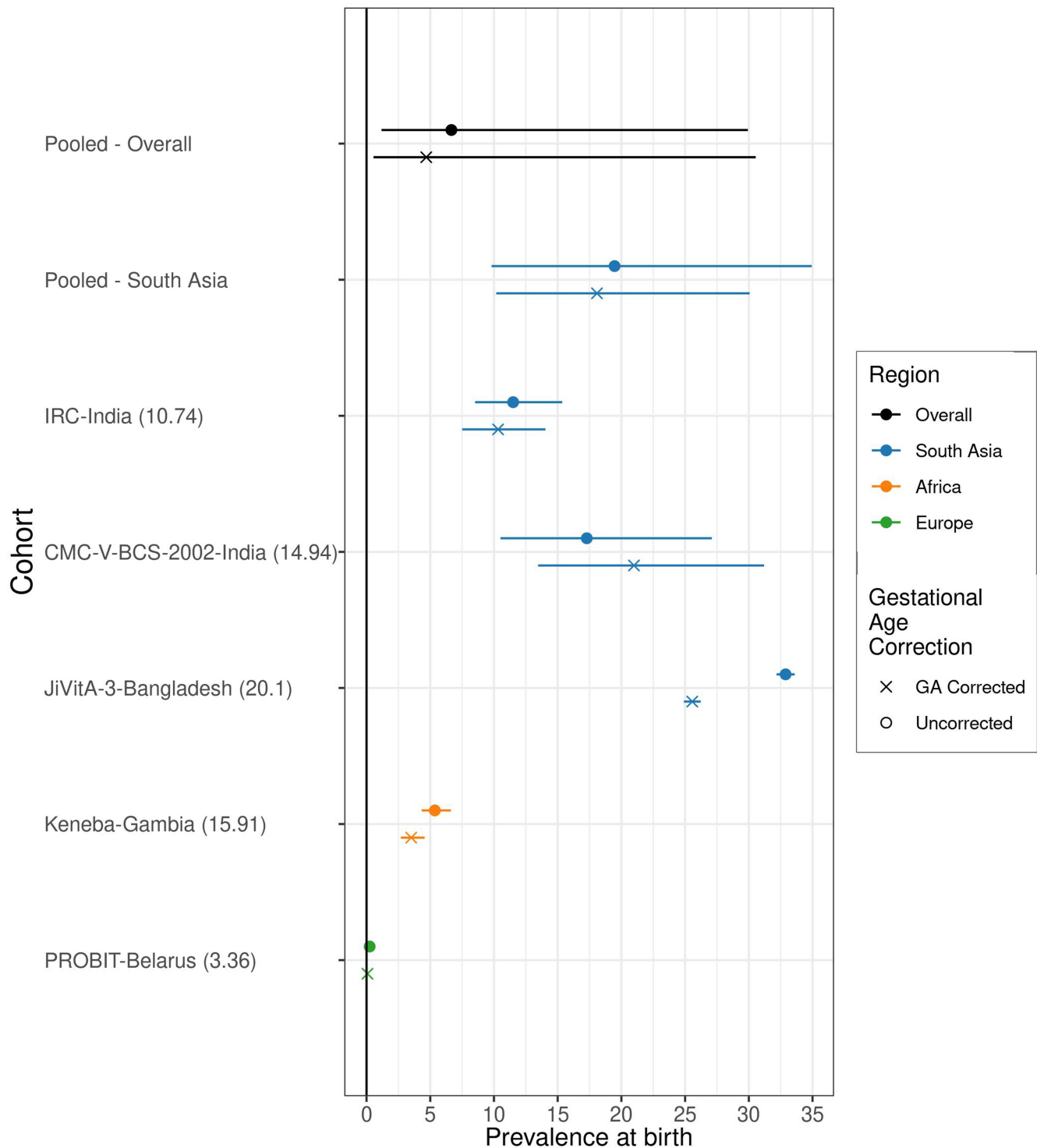
Extended Data Fig. 13 | Distribution of LAZ at subsequent measurements after stunting reversal. Includes data from 21 cohorts in 10 countries with at least monthly measurement (N = 11,271 children). All panels contain data up to age 15 months because in most cohorts, measurements were less frequent

above 15 months. The underlying data is equivalent to that displayed in Fig. 5a; this figure uses a different color palette to emphasize observations in which children experienced new stunting, stunting relapse, or stunting reversal.



Extended Data Fig. 14 | Linear growth velocity by age and sex stratified by region. (a) Within-child difference in length in centimeters per month stratified by age, sex, and region. Dashed black line indicates 25th percentile of the WHO Growth Velocity Standards; solid black line indicates the 50th percentile. Colored lines indicate and vertical bars indicate 95% confidence intervals for

ki cohorts. Light gray lines indicate cohort-specific linear growth velocity curves. **(b)** Within-child difference in length-for-age Z-score per month by age, sex, and region. Smaller partially transparent points indicate cohort-specific estimates. Results shown in all panels were derived from 32 *ki* cohorts in 14 countries that measured children at least quarterly ($n = 52,640$ children).



Extended Data Fig. 15 | Comparison of stunting prevalence at birth with and without gestational age correction. This figure includes the results from correcting at-birth Z-scores in the *ki* cohorts that measured gestational age (GA) for 37,218 measurements in 5 cohorts. The number in the parentheses following each cohort name indicates the prevalence of pre-term birth in each cohort. The corrections are using the Intergrowth standards and are implemented using the *Rgrowthstandards* package (<https://ki-tools.github.io/growthstandards/>). Overall, the stunting prevalence at birth decreased slightly after correcting for

gestational age, but the cohort-specific results are inconsistent. Observations with GA outside of the Intergrowth standards range (<168 or >300 days) were dropped for both the corrected and uncorrected data. Prevalence increased after GA correction in some cohorts due to high rates of late-term births based on reported GA. Gestational age was estimated based on mother's recall of the last menstrual period in the Jivita-3, IRC, and CMC-V-BCS-2002 cohorts, was based on the Dubowitz method (newborn exam) in the Keneba cohort and was based on ultrasound measurements in the PROBIT trial.

Article

Extended Data Table 1 | Countries and survey years included in the analysis of DHS data

Africa	
Gambia	2013
Malawi	2015-2016
Tanzania	2015-2016
South Africa	2016
Zimbabwe	2015
South Asia	
Bangladesh	2014
India	2015-2016
Nepal	2016
Pakistan	2017-2018
Latin America	
Brazil	1996
Guatemala	2014-2015
Peru	2012

Reporting Summary

Nature Portfolio wishes to improve the reproducibility of the work that we publish. This form provides structure for consistency and transparency in reporting. For further information on Nature Portfolio policies, see our [Editorial Policies](#) and the [Editorial Policy Checklist](#).

Statistics

For all statistical analyses, confirm that the following items are present in the figure legend, table legend, main text, or Methods section.

n/a Confirmed

- ☐ ☒ The exact sample size (n) for each experimental group/condition, given as a discrete number and unit of measurement
- ☐ ☒ A statement on whether measurements were taken from distinct samples or whether the same sample was measured repeatedly
- ☒ ☐ The statistical test(s) used AND whether they are one- or two-sided
Only common tests should be described solely by name; describe more complex techniques in the Methods section.
- ☐ ☒ A description of all covariates tested
- ☐ ☒ A description of any assumptions or corrections, such as tests of normality and adjustment for multiple comparisons
- ☐ ☒ A full description of the statistical parameters including central tendency (e.g. means) or other basic estimates (e.g. regression coefficient) AND variation (e.g. standard deviation) or associated estimates of uncertainty (e.g. confidence intervals)
- ☐ ☒ For null hypothesis testing, the test statistic (e.g. F , t , r) with confidence intervals, effect sizes, degrees of freedom and P value noted
Give P values as exact values whenever suitable.
- ☒ ☐ For Bayesian analysis, information on the choice of priors and Markov chain Monte Carlo settings
- ☐ ☒ For hierarchical and complex designs, identification of the appropriate level for tests and full reporting of outcomes
- ☐ ☒ Estimates of effect sizes (e.g. Cohen's d , Pearson's r), indicating how they were calculated

Our web collection on [statistics for biologists](#) contains articles on many of the points above.

Software and code

Policy information about [availability of computer code](#)

Data collection This manuscript is a secondary data analysis of existing study data from 31 cohorts and trials, so we were not involved in original data collection.

Data analysis All analyses were conducted using R statistical software, and scripts that reproduce all analyses are available on Github here: <https://github.com/child-growth/ki-longitudinal-growth>

For manuscripts utilizing custom algorithms or software that are central to the research but not yet described in published literature, software must be made available to editors and reviewers. We strongly encourage code deposition in a community repository (e.g. GitHub). See the Nature Portfolio [guidelines for submitting code & software](#) for further information.

Data

Policy information about [availability of data](#)

All manuscripts must include a [data availability statement](#). This statement should provide the following information, where applicable:

- Accession codes, unique identifiers, or web links for publicly available datasets
- A description of any restrictions on data availability
- For clinical datasets or third party data, please ensure that the statement adheres to our [policy](#)

Data are available upon agreement from the data contributors of individual studies, whose contact information is available from the Bill and Melinda Gates Foundation Knowledge Integration project (email [TO BE ADDED] upon reasonable request).

Field-specific reporting

Please select the one below that is the best fit for your research. If you are not sure, read the appropriate sections before making your selection.

☐ Life sciences ☒ Behavioural & social sciences ☐ Ecological, evolutionary & environmental sciences

For a reference copy of the document with all sections, see [nature.com/documents/nr-reporting-summary-flat.pdf](https://www.nature.com/documents/nr-reporting-summary-flat.pdf)

Behavioural & social sciences study design

All studies must disclose on these points even when the disclosure is negative.

Study description	This study performed a quantitative analysis of de-identified secondary, longitudinal data on child growth.
Research sample	The data analyzed in this study were amassed as part of the Knowledge Integration (ki) initiative of the Bill & Melinda Gates Foundation, which aggregated observations on millions of participants from a global collection of studies on child birth, growth and development. We selected longitudinal cohorts from the database that met five inclusion criteria: 1) conducted in LMICs; 2) enrolled children between birth and age 24 months and measured their length and weight repeatedly over time; 3) did not restrict enrollment to acutely ill children; 4) enrolled at least 200 children; and 5) collected anthropometry measurements at least every 3 months. Thirty-one cohorts met inclusion criteria, including 52,640 children and 412,458 total measurements.
Sampling strategy	Not applicable.
Data collection	Not applicable.
Timing	Datasets include measurements collected between 1987 and 2017.
Data exclusions	We dropped 859 out of 413,317 measurements (0.2%) from the original datasets because length-for-age Z-scores were unrealistic (> 6 or < -6 Z).
Non-participation	Not applicable.
Randomization	Participants were not randomly assigned.

Reporting for specific materials, systems and methods

We require information from authors about some types of materials, experimental systems and methods used in many studies. Here, indicate whether each material, system or method listed is relevant to your study. If you are not sure if a list item applies to your research, read the appropriate section before selecting a response.

Materials & experimental systems

n/a	Involved in the study
<input checked="" type="checkbox"/>	<input type="checkbox"/> Antibodies
<input checked="" type="checkbox"/>	<input type="checkbox"/> Eukaryotic cell lines
<input checked="" type="checkbox"/>	<input type="checkbox"/> Palaeontology and archaeology
<input checked="" type="checkbox"/>	<input type="checkbox"/> Animals and other organisms
<input checked="" type="checkbox"/>	<input type="checkbox"/> Human research participants
<input checked="" type="checkbox"/>	<input type="checkbox"/> Clinical data
<input checked="" type="checkbox"/>	<input type="checkbox"/> Dual use research of concern

Methods

n/a	Involved in the study
<input checked="" type="checkbox"/>	<input type="checkbox"/> ChIP-seq
<input checked="" type="checkbox"/>	<input type="checkbox"/> Flow cytometry
<input checked="" type="checkbox"/>	<input type="checkbox"/> MRI-based neuroimaging