

Nivolumab plus chemotherapy or ipilimumab in gastro-oesophageal cancer

<https://doi.org/10.1038/s41586-022-04508-4>

Received: 22 October 2021

Accepted: 3 February 2022

Published online: 23 March 2022

Open access

 Check for updates

Kohei Shitara¹, Jaffer A. Ajani², Markus Moehler³, Marcelo Garrido⁴, Carlos Gallardo⁵, Lin Shen⁶, Kensei Yamaguchi⁷, Lucjan Wyrwicz⁸, Tomasz Skoczylas⁹, Arinilda Campos Bragagnoli¹⁰, Tianshu Liu¹¹, Mustapha Tehfe¹², Elena Elimova¹³, Ricardo Bruges¹⁴, Thomas Zander¹⁵, Sergio de Azevedo¹⁶, Ruben Kowalyszyn¹⁷, Roberto Pazo-Cid¹⁸, Michael Schenker¹⁹, James M. Cleary²⁰, Patricio Yanez²¹, Kynan Feeney²², Michalis V. Karamouzis²³, Valerie Poulart²⁴, Ming Lei²⁴, Hong Xiao²⁴, Kaoru Kondo²⁴, Mingshun Li²⁴ & Yelena Y. Janjigian²⁵✉

Standard first-line chemotherapy results in disease progression and death within one year in most patients with human epidermal growth factor receptor 2 (HER2)-negative gastro-oesophageal adenocarcinoma^{1–4}. Nivolumab plus chemotherapy demonstrated superior overall survival versus chemotherapy at 12-month follow-up in gastric, gastro-oesophageal junction or oesophageal adenocarcinoma in the randomized, global CheckMate 649 phase 3 trial⁵ (programmed death ligand-1 (PD-L1) combined positive score ≥ 5 and all randomized patients). On the basis of these results, nivolumab plus chemotherapy is now approved as a first-line treatment for these patients in many countries⁶. Nivolumab and the cytotoxic T-lymphocyte antigen-4 (CTLA-4) inhibitor ipilimumab have distinct but complementary mechanisms of action that contribute to the restoration of anti-tumour T-cell function and induction of de novo anti-tumour T-cell responses, respectively^{7–11}. Treatment combining 1 mg kg⁻¹ nivolumab with 3 mg kg⁻¹ ipilimumab demonstrated clinically meaningful anti-tumour activity with a manageable safety profile in heavily pre-treated patients with advanced gastro-oesophageal cancer¹². Here we report both long-term follow-up results comparing nivolumab plus chemotherapy versus chemotherapy alone and the first results comparing nivolumab plus ipilimumab versus chemotherapy alone from CheckMate 649. After the 24.0-month minimum follow-up, nivolumab plus chemotherapy continued to demonstrate improvement in overall survival versus chemotherapy alone in patients with PD-L1 combined positive score ≥ 5 (hazard ratio 0.70; 95% confidence interval 0.61, 0.81) and all randomized patients (hazard ratio 0.79; 95% confidence interval 0.71, 0.88). Overall survival in patients with PD-L1 combined positive score ≥ 5 for nivolumab plus ipilimumab versus chemotherapy alone did not meet the prespecified boundary for significance. No new safety signals were identified. Our results support the continued use of nivolumab plus chemotherapy as standard first-line treatment for advanced gastro-oesophageal adenocarcinoma.

We enrolled 3,185 patients, 2,031 of whom were randomized across the 3 treatment groups; of these, 1,581 patients were concurrently randomized to nivolumab plus chemotherapy or chemotherapy (April 2017 to May 2019) and 813 to nivolumab plus ipilimumab or chemotherapy (October 2016 to June 2018). Enrolment to the nivolumab-plus-ipilimumab group was closed early owing to increased rate of adverse events and early deaths relative to the other two study groups, per recommendation from the data monitoring committee. Among randomized patients, the number of patients who received one or more dose of study treatment and those that were discontinued at

the data cut-off date for the current analysis (27 May 2021) are shown in Extended Data Fig. 1. The primary reason for treatment discontinuation was disease progression (Extended Data Fig. 1).

Baseline characteristics were balanced across the treatment groups (Supplementary Information). Most patients were of non-Asian race ($\geq 70\%$) and had gastric cancer ($\geq 69\%$), whereas approximately 18% and 12% had gastro-oesophageal junction (GEJ) cancer and oesophageal adenocarcinoma, respectively. Approximately 60% of patients across groups had tumours expressing PD-L1 combined positive score (CPS) ≥ 5 and 3% had microsatellite instability-high (MSI-H) tumours.

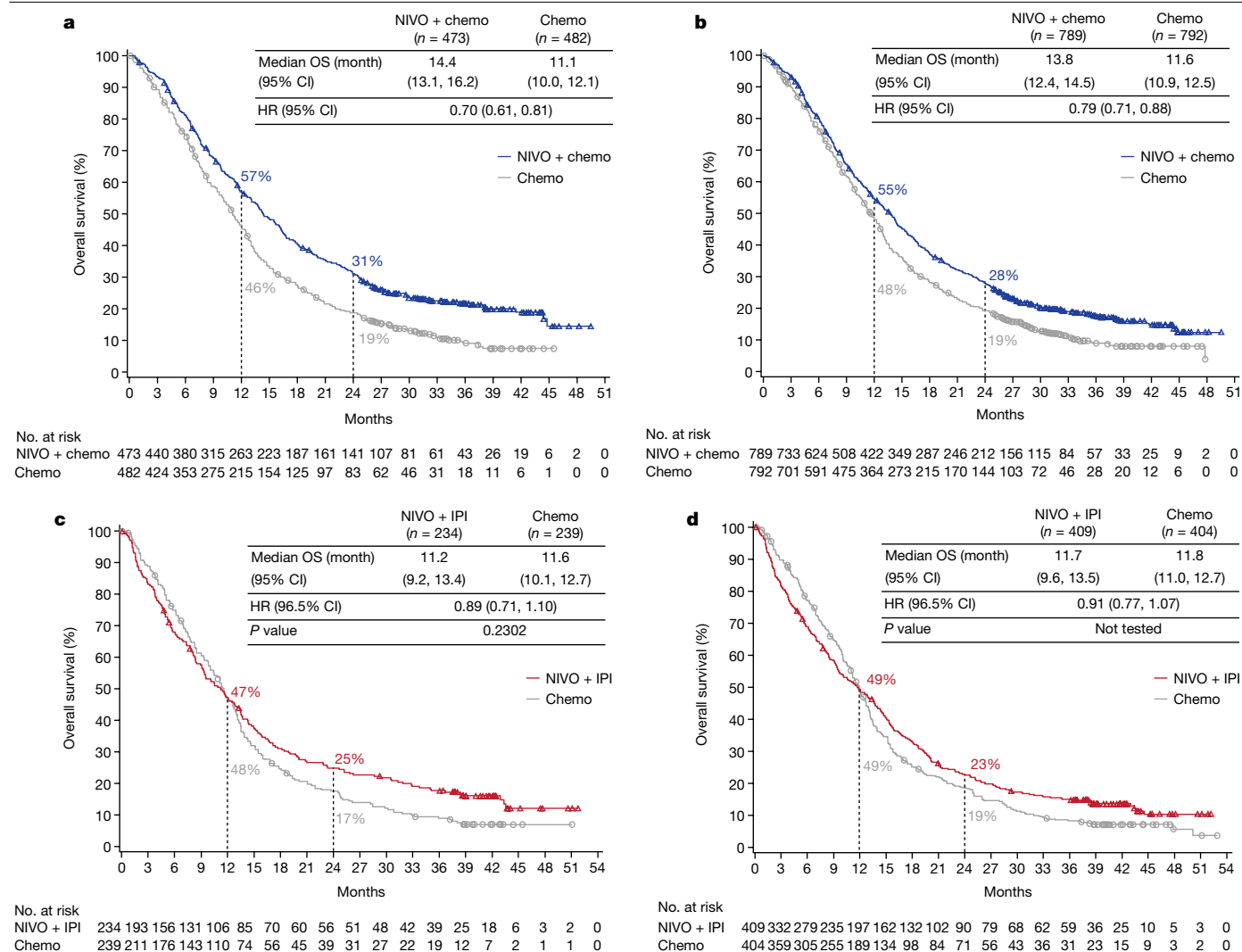


Fig. 1 | Kaplan–Meier estimates of overall survival. a, b, Overall survival with nivolumab plus chemotherapy versus chemotherapy in patients with PD-L1 CPS ≥ 5 (**a**) and in all randomized patients (**b**). Minimum follow-up, 24.0 months. **c, d,** Overall survival with nivolumab plus ipilimumab versus chemotherapy in

patients with PD-L1 CPS ≥ 5 (**c**) and in all randomized patients (**d**). Minimum follow-up, 35.7 months. Chemo, chemotherapy; CI, confidence interval; HR, hazard ratio; IPI, ipilimumab; NIVO, nivolumab; OS, overall survival.

Efficacy of nivolumab plus chemotherapy

With a 24.0-month minimum follow-up (time from concurrent randomization of the last patient to clinical data cut-off), nivolumab plus chemotherapy continued to demonstrate improved overall survival versus chemotherapy in patients with PD-L1 CPS ≥ 5 ; median overall survival was 14.4 months (95% confidence interval 13.1, 16.2) versus 11.1 months (10.0, 12.1), respectively (Fig. 1a). There was a 30% reduction in the risk of death (hazard ratio 0.70 (95% confidence interval 0.61, 0.81)) and sustained separation of Kaplan–Meier curves; the proportion of patients alive at 24 months was 31% versus 19%, respectively. Similarly, improved overall survival with nivolumab plus chemotherapy versus chemotherapy was observed in all randomized patients; median overall survival was 13.8 months (95% confidence interval 12.4, 14.5) versus 11.6 months (95% confidence interval 10.9, 12.5), respectively, with a 21% reduction in the risk of death versus chemotherapy (hazard ratio 0.79; 95% confidence interval 0.71, 0.88) (Fig. 1b).

Progression-free survival (PFS) benefit was maintained after longer follow-up with nivolumab plus chemotherapy versus chemotherapy in patients with PD-L1 CPS ≥ 5 (hazard ratio 0.70; 95% confidence interval 0.60, 0.81) and in all randomized patients (hazard ratio 0.79; 95% confidence interval 0.70, 0.89); 24-month PFS rates were numerically higher

in both populations (19% versus 11% and 16% versus 10%, respectively) (Extended Data Fig. 2a, b). Median PFS2 (time from randomization to progression after subsequent systemic therapy, initiation of second subsequent systemic therapy or death, whichever is earlier) was numerically longer with nivolumab plus chemotherapy versus chemotherapy (PD-L1 CPS ≥ 5 , 13.7 months (95% confidence interval 11.9, 15.0) versus 9.8 months (8.5, 10.6; hazard ratio 0.65; 95% confidence interval 0.57, 0.76); all randomized patients, 12.2 months (95% confidence interval 11.3, 13.5) versus 10.4 months (9.7, 11.2; hazard ratio 0.75; 95% confidence interval 0.67, 0.84)) (Extended Data Fig. 3).

Objective responses with nivolumab plus chemotherapy were observed in 226 (60%; 95% confidence interval 55, 65) of 378 patients with PD-L1 CPS ≥ 5 compared with 176 (45%; 95% confidence interval 40, 50) of 390 patients with chemotherapy. In all randomized patients, objective responses were observed in 350 (58%; 95% confidence interval 54, 62) of 603 patients with nivolumab plus chemotherapy versus 279 (46%; 95% confidence interval 42, 50) of 607 patients with chemotherapy (Extended Data Table 1). Additional complete responses were observed with nivolumab plus chemotherapy compared with the prespecified interim analysis at 12-month follow-up (PD-L1 CPS ≥ 5 , $n = 5$ and all randomized, $n = 6$); there were no additional complete responses with chemotherapy alone. The total number of complete

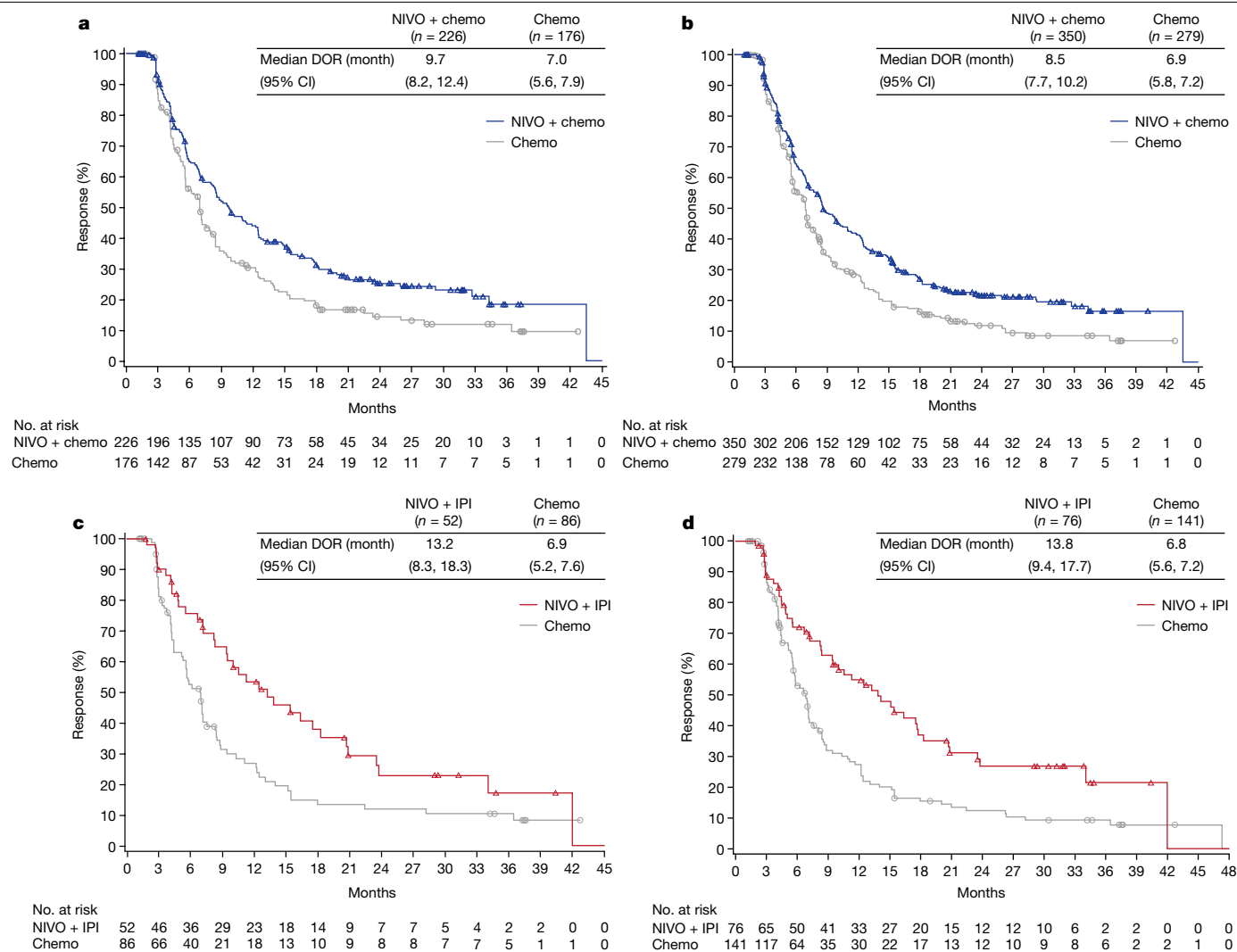


Fig. 2 | Kaplan–Meier estimates of duration of response. a, b, Duration of response per BICR with nivolumab plus chemotherapy versus chemotherapy in patients with PD-L1 CPS ≥ 5 (a) and in all randomized patients (b). **c, d,** Duration of response with nivolumab plus ipilimumab versus chemotherapy in patients with PD-L1 CPS ≥ 5 (c) and in all randomized patients (d). Number of responders (n) is

indicated. Number of randomized patients who had target lesion measurements at baseline per BICR assessment for PD-L1 CPS ≥ 5 : NIVO + chemo, $n = 378$; chemo, $n = 390$; all randomized: NIVO + chemo, $n = 603$; chemo, $n = 607$; PD-L1 CPS ≥ 5 : NIVO + IPI, $n = 196$; chemo, $n = 183$; and all randomized: NIVO + IPI, $n = 333$; chemo, $n = 299$. BICR, blinded independent central review; DOR, duration of response.

responses observed with nivolumab plus chemotherapy was 49 (13%) in patients with PD-L1 CPS ≥ 5 and 65 (11%) in all randomized patients; a total of 26 (7%) and 38 (6%) patients experienced complete responses with chemotherapy, respectively. Median duration of response with nivolumab plus chemotherapy versus chemotherapy was 9.7 versus 7.0 months in patients with PD-L1 CPS ≥ 5 and 8.5 versus 6.9 months in all randomized patients, respectively (Fig. 2a, b, Extended Data Table 1). The percentage of patients with PD-L1 CPS ≥ 5 who had more than 50% tumour burden reduction was 53% with nivolumab plus chemotherapy and 44% with chemotherapy; the percentage of patients with more than 80% reduction was 27% and 18%, respectively, with consistent results in all randomized patients (Extended Data Fig. 4).

Efficacy of nivolumab plus ipilimumab

The hierarchically tested secondary endpoint of overall survival with nivolumab plus ipilimumab versus chemotherapy in patients with PD-L1 CPS ≥ 5 did not meet the prespecified boundary for significance at 35.7-month minimum follow-up; median overall survival was 11.2 (95% confidence interval 9.2, 13.4) versus 11.6 (95% confidence interval

10.1, 12.7) months, respectively (hazard ratio 0.89; 96.5% confidence interval 0.71, 1.10; $P = 0.2302$); 1-year overall survival rates were 47% (95% confidence interval 40, 53) and 48% (95% confidence interval 41, 54; Fig. 1c). The secondary endpoint of overall survival in all randomized patients with nivolumab plus ipilimumab versus chemotherapy was not statistically tested; median overall survival was 11.7 (95% confidence interval 9.6, 13.5) versus 11.8 (95% confidence interval 11.0, 12.7) months, respectively (hazard ratio 0.91; 96.5% confidence interval 0.77, 1.07); 1-year overall survival rates were 49% (95% confidence interval 44, 54) and 49% (95% confidence interval 44, 53; Fig. 1d). The 24-month overall survival rates with nivolumab plus ipilimumab versus chemotherapy were 25% versus 17% in patients with PD-L1 CPS ≥ 5 and 23% versus 19% in all randomized patients, respectively.

PFS and objective response rate (ORR) were not improved with nivolumab plus ipilimumab versus chemotherapy in patients with PD-L1 CPS ≥ 5 or in all randomized patients (Extended Data Fig. 2c, d, Extended Data Table 1). However, responses were more durable with nivolumab plus ipilimumab versus chemotherapy in both PD-L1 CPS ≥ 5 (median duration of response, 13.2 versus 6.9 months, respectively) and in all randomized patients (median duration of response, 13.8 versus 6.8 months; Fig. 2c, d, Extended Data Table 1).

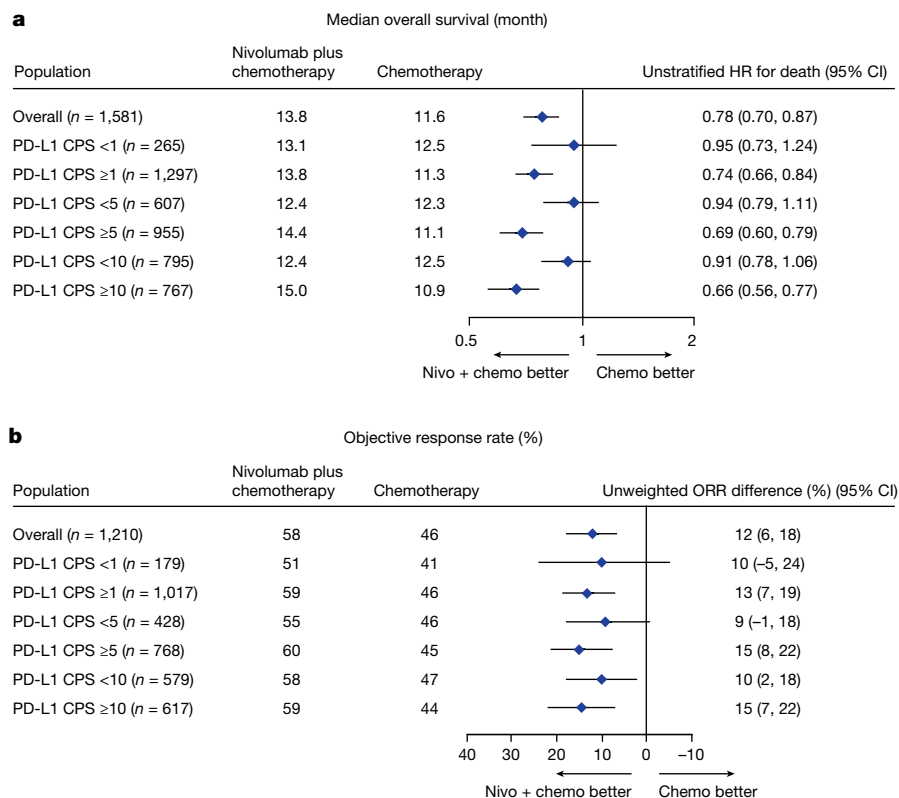


Fig. 3 | Forest plot of efficacy outcomes by PD-L1 CPS with nivolumab plus chemotherapy versus chemotherapy. a, Overall survival. PD-L1 CPS expression indeterminate, not evaluable or not reported for $n = 19$ patients. Data are presented as unstratified hazard ratios and 95% confidence interval. **b**, Objective response rate among randomized patients who had target lesion

measurements at baseline, per blinded independent central review assessment. PD-L1 CPS expression indeterminate, not evaluable or not reported for $n = 14$ patients; percentages may not reflect an exact difference, owing to rounding. Data are presented as unweighted ORR differences and 95% confidence interval.

Subgroup analyses

The hazard ratios for overall survival continued to favour nivolumab plus chemotherapy versus chemotherapy across multiple prespecified subgroups in patients with PD-L1 CPS ≥ 5 and all randomized patients with longer follow-up (Extended Data Figs. 5, 6). Overall survival benefit was enriched in patients with MSI-H tumours with nivolumab plus chemotherapy versus chemotherapy (unstratified hazard ratio 0.38; 95% confidence interval 0.17, 0.84; Extended Data Figs. 6, 7a); overall survival benefit in patients with microsatellite stable (MSS) tumours was consistent with that observed in all randomized patients (unstratified hazard ratio 0.78; 95% confidence interval 0.70, 0.88; Extended Data Figs. 6, 7b). ORR was also higher with nivolumab plus chemotherapy versus chemotherapy in patients with MSI-H tumours (55%; 95% confidence interval 32, 77 versus 39%; 95% confidence interval 17, 64, respectively) and those with MSS tumours (59%; 95% confidence interval 55, 63 versus 46%; 95% confidence interval 42, 51; Extended Data Fig. 7a, b). Similarly, nivolumab plus ipilimumab showed longer median overall survival (unstratified hazard ratio 0.28; 95% confidence interval 0.08, 0.92) and higher ORR (70%; 95% confidence interval 35, 93 versus 57%; 95% confidence interval 18, 90) compared with chemotherapy in patients with MSI-H tumours (Extended Data Fig. 7c, d).

The unstratified hazard ratios for overall survival with nivolumab plus chemotherapy in patients with PD-L1 CPS ≥ 10 , ≥ 5 and ≥ 1 were 0.66 (95% confidence interval 0.56, 0.77), 0.69 (95% confidence interval 0.60, 0.79) and 0.74 (95% confidence interval 0.66, 0.84), respectively (Fig. 3a). In patients with PD-L1 CPS < 10 , < 5 and < 1 , the unstratified hazard ratios for overall survival were 0.91 (95% confidence interval 0.78, 1.06), 0.94 (95% confidence interval 0.79, 1.11) and 0.95 (95% confidence interval 0.73, 1.24), respectively (Fig. 3a). ORR was numerically higher with

nivolumab plus chemotherapy versus chemotherapy across all evaluated PD-L1 CPS subgroups (Fig. 3b). Nivolumab plus ipilimumab did not show clear improvement in overall survival or ORR by PD-L1 CPS compared with chemotherapy (Extended Data Fig. 8).

Subsequent therapy

Subsequent therapy was received by 41% and 44% of randomized patients in the nivolumab-plus-chemotherapy and chemotherapy groups and by 48% and 46% of patients in the nivolumab-plus-ipilimumab and chemotherapy groups. The most common subsequent treatment was chemotherapy (36% and 39% in the nivolumab-plus-chemotherapy and chemotherapy groups and 44% and 41% in the nivolumab-plus-ipilimumab and chemotherapy groups). Subsequent immunotherapy was received by 2% and 9% of patients in the nivolumab-plus-chemotherapy and chemotherapy groups and by 3% and 12% of patients in the nivolumab-plus-ipilimumab and chemotherapy groups (Supplementary Information).

Safety

The median treatment duration was 6.8 months (range 0.1–45.0) and 4.9 months (range 0.0–44.2) with nivolumab plus chemotherapy versus chemotherapy and 1.9 months (range 0.0–24.1) and 4.9 months (range 0.1–45.5) with nivolumab plus ipilimumab versus chemotherapy (Supplementary Information). Grade 3–4 treatment-related adverse events (TRAEs) occurred in 60% and 45% of patients with nivolumab plus chemotherapy versus chemotherapy and in 38% and 46% with nivolumab plus ipilimumab versus chemotherapy (Table 1). The most common grade 3–4 TRAE was neutropenia (15%) with nivolumab plus

Table 1 | Summary of treatment-related adverse events in all treated patients

| | Nivolumab plus chemotherapy (n = 782) ^{a,b} | | Chemotherapy (n = 767) ^{a,b} | | Nivolumab plus ipilimumab (n = 403) ^{a,c} | | Chemotherapy (n = 389) ^{a,c} | |
|--|--|-----------|---------------------------------------|-----------|--|-----------|---------------------------------------|-----------|
| | Any grade | Grade 3–4 | Any grade | Grade 3–4 | Any grade | Grade 3–4 | Any grade | Grade 3–4 |
| All events | 739 (95) | 471 (60) | 682 (89) | 344 (45) | 323 (80) | 155 (38) | 356 (92) | 180 (46) |
| Serious events | 175 (22) | 133 (17) | 94 (12) | 77 (10) | 122 (30) | 93 (23) | 54 (14) | 45 (12) |
| Events leading to discontinuation ^d | 300 (38) | 141 (18) | 188 (25) | 70 (9) | 88 (22) | 68 (17) | 101 (26) | 37 (10) |

Data are presented as n (%). There were 16 treatment-related deaths with nivolumab plus chemotherapy (4 events of pneumonitis, 2 events of febrile neutropaenia or neutropenic fever and 1 event each of acute cerebral infarction, disseminated intravascular coagulation, gastrointestinal bleeding, gastrointestinal toxicity, infection, intestinal mucositis, mesenteric thrombosis, pneumonia, septic shock and stroke), 10 with nivolumab plus ipilimumab (2 events of cardiac failure and 1 event each of acute hepatic failure, autoimmune hepatitis, general physical health deterioration, herpes simplex reactivation, hypophysitis, immune-mediated enterocolitis, multiple organ dysfunction syndrome, pneumonitis and upper gastrointestinal haemorrhage), and 5 with chemotherapy (1 event each of asthenia and severe hyporexia, diarrhea, pancytopenia, pneumonitis and pulmonary thromboembolism). Treatment-related deaths were reported regardless of timeframe.

^aPatients who received at least one dose of the assigned treatment. Includes events reported between first dose and 30 days after last dose of trial therapy. Treatment relatedness in the nivolumab-plus-chemotherapy group refers to nivolumab, at least one chemotherapy component or both and in the nivolumab-plus-ipilimumab group to nivolumab, ipilimumab or both. National Cancer Institute Common Terminology Criteria for Adverse Events, version 4.0, and Medical Dictionary for Regulatory Activities, version 23.0.

^bConcurrently randomized to nivolumab plus chemotherapy versus chemotherapy.

^cConcurrently randomized to nivolumab plus ipilimumab versus chemotherapy.

^dEvents leading to discontinuation of any drug in the regimen.

chemotherapy, increased lipase (7%) with nivolumab plus ipilimumab and neutropaenia (11–13%) with chemotherapy (Supplementary Information). TRAEs leading to discontinuation occurred in 38% and 25% of patients in the nivolumab-plus-chemotherapy versus chemotherapy groups, respectively, and in 22% and 26% of patients in the nivolumab-plus-ipilimumab versus chemotherapy groups (Table 1). Any-grade serious TRAEs were reported in 175 (22%) of 782 patients with nivolumab plus chemotherapy and 94 (12%) of 767 patients with chemotherapy and in 122 (30%) of 403 patients with nivolumab plus ipilimumab and 54 (14%) of 389 patients with chemotherapy. There were 16 treatment-related deaths with nivolumab plus chemotherapy, 10 with nivolumab plus ipilimumab and 5 with chemotherapy. The majority of TRAEs with a potential immunologic aetiology were grade 1 or 2; grade 3–4 events occurred in ≤5% of patients receiving nivolumab plus chemotherapy and in ≤12% of patients receiving nivolumab plus ipilimumab across organ categories (Supplementary Information).

Patient-reported outcomes

Since the hierarchically tested secondary endpoint of overall survival with nivolumab plus ipilimumab versus chemotherapy in patients with PD-L1 CPS ≥ 5 was not met, the secondary endpoint of time to symptom deterioration (TSD) in patients with PD-L1 CPS ≥ 5 and all randomized patients was not statistically tested. An improvement from baseline in the Functional Assessment of Cancer Therapy-Gastric (FACT-Ga) questionnaire total score was observed at all on-treatment assessments (Supplementary Information). The least-squares mean difference between treatment groups favoured nivolumab plus chemotherapy versus chemotherapy alone (at timepoints with ≥10 patients in each group); however, these differences did not reach the threshold for meaningful change (prespecified as 15.1 points; Extended Data Fig. 9a, b). The proportion of patients who reported not being bothered by treatment side effects over time on the basis of the GP5 item from FACT-Ga was higher with nivolumab plus chemotherapy than with chemotherapy alone, except at baseline when patients had not received treatment (Extended Data Fig. 9c, d).

Discussion

Several targeted and immuno-oncology agents have been evaluated as first-line treatment for HER2-negative gastric or GEJ cancer; however, until recently, none have significantly prolonged survival relative to chemotherapy^{1–4,13}. The positive results of CheckMate 649 reported with 12-month follow-up have established nivolumab plus chemotherapy as

a standard first-line treatment for advanced gastric, GEJ or oesophageal adenocarcinoma⁵. After 24-month follow-up, nivolumab plus chemotherapy continued to demonstrate clinically meaningful improvement in overall survival, PFS and ORR versus chemotherapy alone. Hazard ratios for overall survival were directionally improved with nivolumab plus chemotherapy versus chemotherapy relative to the 12-month follow-up⁵ (PD-L1 CPS ≥ 5, 0.71; 98.4% confidence interval 0.59, 0.86; all randomized, 0.80; 99.3% confidence interval 0.68, 0.94), and 2-year survival rates were higher with nivolumab plus chemotherapy compared with chemotherapy. ORR was higher with nivolumab plus chemotherapy versus chemotherapy and a greater proportion of patients experienced reduction in tumour burden versus chemotherapy. Responses deepened with nivolumab plus chemotherapy with longer follow-up as evidenced by the additional complete responses compared with the 12-month follow-up.

There is considerable variation in the previously reported prevalence of PD-L1 CPS expression in gastro-oesophageal adenocarcinoma, with PD-L1 CPS ≥ 5 detected in 17–60% of patients^{14–17}. CheckMate 649 is the most robust dataset to date to report PD-L1 CPS ≥ 5 prevalence using an analytically validated assay (28-8 pharmDx) in gastric, GEJ or oesophageal adenocarcinoma. The phase 3 ORIENT-16 trial in China reported a similar PD-L1 CPS ≥ 5 prevalence of approximately 60% using the 22C3 PharmDx assay^{17,18}. In CheckMate 649, the magnitude of survival benefit continued to be enriched with nivolumab plus chemotherapy versus chemotherapy in patients with higher PD-L1 CPS, consistent with results at 12-month follow-up⁵. However, in patients with PD-L1 CPS ≥ 5 and ≥10, hazard ratios for overall survival were rather close to each other, with overlapping confidence intervals, and ORR benefit was similar, suggesting no meaningful further enrichment of clinical benefit at or above PD-L1 CPS 10. Furthermore, the ORRs observed with nivolumab plus chemotherapy were higher versus chemotherapy across all evaluated PD-L1 CPS cut-offs, suggesting that clinical benefit with nivolumab plus chemotherapy is not restricted to patients with PD-L1 CPS ≥ 5. Further analyses may help identify factors that are associated with higher magnitude of clinical benefit in patients with lower PD-L1 CPS.

Overall survival continued to favour nivolumab plus chemotherapy versus chemotherapy across multiple prespecified baseline characteristics with longer follow-up. Notably, the magnitude of survival benefit was markedly greater in the MSI-H subgroup for both patients with PD-L1 CPS ≥ 5 and all randomized patients, suggesting that benefit is independent of PD-L1 CPS. Similar results were reported with first-line pembrolizumab plus chemotherapy versus chemotherapy in patients with gastric or GEJ cancer (PD-L1 CPS ≥ 1) who had MSI-H tumours¹³. In CheckMate 649, the overall survival benefit in patients with MSS tumours was similar to that observed in all randomized patients.

The secondary endpoint of overall survival with nivolumab plus ipilimumab versus chemotherapy in CheckMate 649 did not meet the prespecified boundary for significance in patients with PD-L1 CPS ≥ 5 . The observed response rates with nivolumab plus ipilimumab were lower versus chemotherapy, and there was no enrichment with increasing PD-L1 CPS cut-offs. However, the median duration of response almost doubled with nivolumab plus ipilimumab versus chemotherapy, which is consistent with results in other solid tumours with this combination^{19–22}.

The lack of significant overall survival improvement with nivolumab plus ipilimumab is probably a result of multiple factors. There was an increase in early death rate with nivolumab plus ipilimumab versus chemotherapy; crossing of the Kaplan–Meier curves, which is a known phenomenon with immuno-oncology therapies^{13,23,24}, was observed at 12 months, and the overall survival curves remained separated thereafter in favour of nivolumab plus ipilimumab. A higher number of patients receiving subsequent immuno-oncology therapy in the chemotherapy versus nivolumab-plus-ipilimumab group (12% versus 3%, respectively) may have also contributed to these results.

Tumours in gastric, GEJ or oesophageal adenocarcinoma are composed of distinct molecular subtypes^{25,26}. Although dual checkpoint inhibition has been proven to be effective in multiple solid tumours^{19–22,27}, further research is needed to evaluate how tumour biology, molecular heterogeneity, dynamics in tumour microenvironment and other patient factors may affect the efficacy of combined PD-L1 and CTLA-4 blockade. Notably, in the small but relevant subgroup of patients with microsatellite instability, which is characterized by high tumour mutational burden and CD8-positive T-cell infiltrates and is susceptible to immune-checkpoint inhibition^{25,28–30}, longer overall survival and higher ORR were observed with nivolumab plus ipilimumab versus chemotherapy in CheckMate 649. These data suggest that combined immune checkpoint blockade in this patient population might be of interest to explore in future studies.

No new safety signals were identified with nivolumab plus chemotherapy in CheckMate 649 with similar frequencies of TRAEs relative to the 12-month follow-up. The safety profile of nivolumab plus ipilimumab observed in this trial was consistent with the known safety profile of this combination^{12,27}. Limitations of this study have been previously discussed⁵.

In conclusion, the long-term clinically meaningful overall survival and PFS benefit, improved and durable responses, maintained health-related quality of life, and acceptable safety profile indicate a favourable benefit–risk profile of nivolumab plus chemotherapy. These results further support the use of this regimen as a standard first-line treatment in previously untreated patients with advanced gastric, GEJ or oesophageal adenocarcinoma.

Online content

Any methods, additional references, Nature Research reporting summaries, source data, extended data, supplementary information, acknowledgements, peer review information; details of author contributions and competing interests; and statements of data and code availability are available at <https://doi.org/10.1038/s41586-022-04508-4>.

1. Catenacci, D. V. T. et al. Rilotumumab plus epirubicin, cisplatin, and capecitabine as first-line therapy in advanced MET-positive gastric or gastro-oesophageal junction cancer (RILOMET-1): a randomised, double-blind, placebo-controlled, phase 3 trial. *Lancet Oncol.* **18**, 1467–1482 (2017).
2. Fuchs, C. S. et al. Ramucicromab with cisplatin and fluoropyrimidine as first-line therapy in patients with metastatic gastric or junctional adenocarcinoma (RAINFALL): a double-blind, randomised, placebo-controlled, phase 3 trial. *Lancet Oncol.* **20**, 420–435 (2019).
3. Lordick, F. et al. Capecitabine and cisplatin with or without cetuximab for patients with previously untreated advanced gastric cancer (EXPAND): a randomised, open-label phase 3 trial. *Lancet Oncol.* **14**, 490–499 (2013).

4. Shah, M. A. et al. Effect of fluorouracil, leucovorin, and oxaliplatin with or without onartuzumab in HER2-negative, MET-positive gastroesophageal adenocarcinoma: the METGastric randomized clinical trial. *JAMA Oncol.* **3**, 620–627 (2017).
5. Janjigian, Y. Y. et al. First-line nivolumab plus chemotherapy versus chemotherapy alone for advanced gastric, gastro-oesophageal junction, and oesophageal adenocarcinoma (CheckMate 649): a randomised, open-label, phase 3 trial. *Lancet* **398**, 27–40 (2021).
6. OPDIVO (Nivolumab) Injection for Intravenous Use. Prescribing Information (Bristol Myers Squibb, 2021).
7. Das, R. et al. Combination therapy with anti-CTLA-4 and anti-PD-1 leads to distinct immunologic changes in vivo. *J. Immunol.* **194**, 950–959 (2015).
8. Brahmer, J. R. et al. Phase I study of single-agent anti-programmed death-1 (MDX-1106) in refractory solid tumors: safety, clinical activity, pharmacodynamics, and immunologic correlates. *J. Clin. Oncol.* **28**, 3167–3175 (2010).
9. Wang, C. et al. In vitro characterization of the anti-PD-1 antibody nivolumab, BMS-936558, and in vivo toxicology in non-human primates. *Cancer Immunol. Res.* **2**, 846–856 (2014).
10. Pardoll, D. M. The blockade of immune checkpoints in cancer immunotherapy. *Nat. Rev. Cancer* **12**, 252–264 (2012).
11. Wei, S. C., Duffy, C. R. & Allison, J. P. Fundamental mechanisms of immune checkpoint blockade therapy. *Cancer Discov.* **8**, 1069–1086 (2018).
12. Janjigian, Y. Y. et al. CheckMate-032 study: efficacy and safety of nivolumab and nivolumab plus ipilimumab in patients with metastatic esophagogastric cancer. *J. Clin. Oncol.* **36**, 2836–2844 (2018).
13. Shitara, K. et al. Efficacy and safety of pembrolizumab or pembrolizumab plus chemotherapy vs chemotherapy alone for patients with first-line, advanced gastric cancer: the KEYNOTE-062 phase 3 randomized clinical trial. *JAMA Oncol.* **6**, 1571–1580 (2020).
14. Lei, M. et al. Analyses of PD-L1 and inflammatory gene expression association with efficacy of nivolumab ± ipilimumab in gastric cancer/gastroesophageal junction cancer. *Clin. Cancer Res.* **27**, 3926–3935 (2021).
15. Hagi, T. et al. Multicentre biomarker cohort study on the efficacy of nivolumab treatment for gastric cancer. *Br. J. Cancer* **123**, 965–972 (2020).
16. Fassan, M. et al. PD-L1 expression in gastroesophageal dysplastic lesions. *Virchows Arch.* **477**, 151–156 (2020).
17. Xu, J. et al. LBA53–Sintilimab plus chemotherapy (chemo) versus chemo as first-line treatment for advanced gastric or gastroesophageal junction (G/GEJ) adenocarcinoma (ORIENT-16): first results of a randomized, double-blind, phase III study. *Ann. Oncol.* **32**, S1283–S1346 (2021).
18. Xu, J., Jin, Y., Liu, Y., Zhou, H. & Wang, Y. ORIENT-16: sintilimab plus XELOX vs placebo plus XELOX as 1st line treatment for unresectable advanced gastric and GEJ adenocarcinoma. *Cancer Res.* **79**, CT213 (2019).
19. Doki, Y. et al. Nivolumab combination therapy in advanced esophageal squamous-cell carcinoma. *N. Engl. J. Med.* **386**, 449–462 (2022).
20. Motzer, R. J. et al. Nivolumab plus ipilimumab versus sunitinib in advanced renal-cell carcinoma. *N. Engl. J. Med.* **378**, 1277–1290 (2018).
21. Baas, P. et al. First-line nivolumab plus ipilimumab in unresectable malignant pleural mesothelioma (CheckMate 743): a multicentre, randomised, open-label, phase 3 trial. *Lancet* **397**, 375–386 (2021).
22. Hellmann, M. D. et al. Nivolumab plus ipilimumab in advanced non-small-cell lung cancer. *N. Engl. J. Med.* **381**, 2020–2031 (2019).
23. Bang, Y. J. et al. Phase III, randomised trial of avelumab versus physician's choice of chemotherapy as third-line treatment of patients with advanced gastric or gastro-oesophageal junction cancer: primary analysis of JAVELIN Gastric 300. *Ann. Oncol.* **29**, 2052–2060 (2018).
24. Shitara, K. et al. Pembrolizumab versus paclitaxel for previously treated, advanced gastric or gastro-oesophageal junction cancer (KEYNOTE-061): a randomised, open-label, controlled, phase 3 trial. *Lancet* **392**, 123–133 (2018).
25. Bass, A. J. et al. Comprehensive molecular characterization of gastric adenocarcinoma. *Nature* **513**, 202–209 (2014).
26. Cancer Genome Atlas Research Network. Integrated genomic characterization of oesophageal carcinoma. *Nature* **541**, 169–175 (2017).
27. Wolchok, J. D. et al. Overall survival with combined nivolumab and ipilimumab in advanced melanoma. *N. Engl. J. Med.* **377**, 1345–1356 (2017).
28. Angell, H. K. et al. PD-L1 and immune infiltrates are differentially expressed in distinct subgroups of gastric cancer. *Oncotarget* **8**, e1544442 (2019).
29. Le, D. T. et al. Mismatch repair deficiency predicts response of solid tumors to PD-1 blockade. *Science* **357**, 409–413 (2017).
30. Zhou, K. I. et al. Spatial and temporal heterogeneity of PD-L1 expression and tumor mutational burden in gastroesophageal adenocarcinoma at baseline diagnosis and after chemotherapy. *Clin. Cancer Res.* **26**, 6453–6463 (2020).

Publisher's note Springer Nature remains neutral with regard to jurisdictional claims in published maps and institutional affiliations.



Open Access This article is licensed under a Creative Commons Attribution 4.0 International License, which permits use, sharing, adaptation, distribution and reproduction in any medium or format, as long as you give appropriate credit to the original author(s) and the source, provide a link to the Creative Commons license, and indicate if changes were made. The images or other third party material in this article are included in the article's Creative Commons license, unless indicated otherwise in a credit line to the material. If material is not included in the article's Creative Commons license and your intended use is not permitted by statutory regulation or exceeds the permitted use, you will need to obtain permission directly from the copyright holder. To view a copy of this license, visit <http://creativecommons.org/licenses/by/4.0/>.

© The Author(s) 2022

¹National Cancer Center Hospital East, Kashiwa, Japan. ²The University of Texas MD Anderson Cancer Center, Houston, TX, USA. ³Johannes-Gutenberg University Clinic, Mainz, Germany. ⁴Clinica San Carlos de Apoquindo, Pontificia Universidad Católica, Santiago, Chile. ⁵Fundación Arturo López Pérez, Providencia, Chile. ⁶Department of Gastrointestinal Oncology, Key Laboratory of Carcinogenesis and Translational Research (Ministry of Education/Beijing), Peking University Cancer Hospital and Institute, Beijing, China. ⁷The Cancer Institute Hospital of JFCR, Tokyo, Japan. ⁸Klinika Onkologii i Radioterapii, Narodowy Instytut Onkologii, Warszawa, Poland. ⁹II Klinika Chirurgii Ogólnej, Gastroenterologicznej i Nowotworów Układu Pokarmowego, Medical University of Lublin, Lublin, Poland. ¹⁰Fundacao Pio XII Hospital Cancer De Barretos, Barretos, Brazil. ¹¹Zhongshan Hospital Fudan University, Shanghai, China. ¹²Oncology Center – Centre Hospitalier de l'Université de Montreal, Montreal, Canada. ¹³Princess Margaret Cancer

Centre, Toronto, Ontario, Canada. ¹⁴Instituto Nacional de Cancerologia E.S.E., Bogotá, Colombia. ¹⁵University of Cologne, Department of Internal Medicine, Center for Integrated Oncology Aachen Bonn Cologne Düsseldorf; Gastrointestinal Cancer Group Cologne (GCGC), Cologne, Germany. ¹⁶Hospital de Clínicas de Porto Alegre, Porto Alegre, Brazil. ¹⁷Instituto Multidisciplinario de Oncología, Clinica Viedma S.A., Viedma, Argentina. ¹⁸Hospital Universitario Miguel Servet, Zaragoza, Spain. ¹⁹SF Nectarie Oncology Center, Craiova, Romania. ²⁰Dana Farber Cancer Institute, Boston, MA, USA. ²¹Universidad de La Frontera, James Lind Cancer Research Center, Temuco, Chile. ²²St John of God Murdoch Hospital, Murdoch, Australia. ²³Laiko General Hospital of Athens, Athens, Greece. ²⁴Bristol Myers Squibb, Princeton, NJ, USA. ²⁵Memorial Sloan Kettering Cancer Center and Weill Cornell Medical College, New York, NY, USA. ⁵³e-mail: janijiy@mskcc.org

Methods

Patients

Adults with unresectable advanced or metastatic gastric, GEJ or oesophageal adenocarcinoma were enrolled, regardless of PD-L1 expression. Patients with known HER2-positive status were excluded, and prior systemic therapy for metastatic disease was not allowed. Other key inclusion criteria were an Eastern Cooperative Oncology Group performance status score of 0 or 1 and the ability to provide a fresh or archival tumour sample to determine PD-L1 status. Additional details on study criteria have been previously described⁵.

Trial design and treatments

CheckMate 649 (NCT02872116) is a randomized, open-label, multi-centre, global phase 3 trial of nivolumab plus chemotherapy or ipilimumab versus chemotherapy alone, conducted at 175 hospitals and cancer centres in 29 countries across Asia, Australia, Europe, North America, and South America. Detailed study design and methods for the nivolumab-plus-chemotherapy versus chemotherapy groups have been previously described⁵. In brief, patients were initially randomized 1:1 to nivolumab plus ipilimumab or to chemotherapy from October 2016 to March 2017. The nivolumab-plus-chemotherapy group was added later, and the randomization was switched to 1:1:1 in March 2017. Enrolment to the nivolumab-plus-ipilimumab group was closed early in June 2018, and after this time, the randomization was switched to a 1:1 ratio of nivolumab plus chemotherapy versus chemotherapy to May 2019. Patients already randomized to nivolumab plus ipilimumab could continue treatment per protocol, but the data remained blinded until the pre-planned final analysis. During enrolment, the population for primary endpoints was amended to patients whose tumours expressed PD-L1 CPS ≥ 5 for the nivolumab-plus-chemotherapy versus chemotherapy groups, although patients continued to be enrolled regardless of PD-L1 expression. Additional randomization procedures and stratification by tumour cell PD-L1 status ($\geq 1\%$ versus $<1\%$ including indeterminate), region (Asia versus United States and Canada versus rest of world), Eastern Cooperative Oncology Group performance status score (0 versus 1) and type of chemotherapy (CapeOX versus FOLFOX) have been described⁵.

Patients were administered nivolumab (360 mg every 3 weeks or 240 mg every 2 weeks) with investigator's choice of chemotherapy (CapeOX (oxaliplatin 130 mg m⁻² on day 1 and capecitabine 1,000 mg m⁻² orally twice daily on days 1–14) every 3 weeks or FOLFOX (leucovorin 400 mg m⁻² on day 1, fluorouracil 400 mg m⁻² on day 1 and 1,200 mg m⁻² on days 1–2, and oxaliplatin 85 mg m⁻² on day 1) every 2 weeks); nivolumab (1 mg kg⁻¹) with ipilimumab (3 mg kg⁻¹) every 3 weeks for 4 cycles, followed by nivolumab (240 mg every 2 weeks); or chemotherapy alone. The dosing for nivolumab 1 mg kg⁻¹ plus ipilimumab 3 mg kg⁻¹ was selected based on results of the CheckMate 032 study, where this regimen provided numerically higher ORR and longer median overall survival compared with nivolumab monotherapy or nivolumab 3 mg kg⁻¹ plus ipilimumab 1 mg kg⁻¹, along with a manageable safety profile in heavily pre-treated patients with advanced gastro-oesophageal adenocarcinoma¹². Treatment was permitted until documented disease progression, unacceptable toxicity, withdrawal of consent or trial end. Nivolumab or ipilimumab were given for a maximum of two years. Patients receiving nivolumab in combination with chemotherapy or ipilimumab were permitted to continue treatment beyond initial disease progression (per Response Evaluation Criteria in Solid Tumors (RECIST), version 1.1), based on the investigator's judgement, until subsequent progression. Dose reductions were not permitted for nivolumab and ipilimumab; dose reductions for chemotherapy were permitted per local standards. Dose delays were allowed for both groups to manage treatment-related toxicity. Nivolumab, ipilimumab, CapeOX and FOLFOX were provided by the sponsor except in certain countries where CapeOX and

FOLFOX were procured commercially if allowed by local regulations. Additional details on discontinuation criteria have been previously described⁵.

The trial was conducted according to Good Clinical Practice guidelines developed by the International Council for Harmonisation and in compliance with the trial protocol (Supplementary Appendix). The trial protocol was approved by the institutional review boards or independent ethics committees at each site (NCT02872116). All patients provided written informed consent prior to trial participation per Declaration of Helsinki principles.

Endpoints and assessments

The dual primary endpoints were overall survival (time from randomization to death) and PFS (time from randomization to the date of the first documented tumour progression (by blinded independent central review (BICR) per RECIST, version 1.1) or death) in the nivolumab-plus-chemotherapy versus chemotherapy groups⁵ in patients with PD-L1 CPS ≥ 5 . Secondary endpoints that were hierarchically tested if the primary endpoints were met were overall survival in patients with PD-L1 CPS ≥ 1 and in all randomized patients in the nivolumab-plus-chemotherapy versus chemotherapy group and overall survival and TTSD in patients with PD-L1 CPS ≥ 5 and in all randomized patients in the nivolumab-plus-ipilimumab versus chemotherapy group. Other key secondary endpoints that were not formally tested included BICR-assessed PFS and ORR evaluated at different PD-L1 CPS cut-offs and in all randomized patients. Key exploratory endpoints included BICR-assessed duration of response; landmark survival rates; PFS2 (time from randomization to progression after subsequent systemic therapy, initiation of second subsequent systemic therapy, or death, whichever is earlier); biomarkers potentially predictive of efficacy; health-related quality of life; and safety and tolerability.

Tumours were assessed using computed tomography or magnetic resonance imaging per RECIST, version 1.1, at baseline, every 6 weeks from the start of cycle 1 for 48 weeks and every 12 weeks thereafter, until disease progression per BICR assessment. Adverse events were assessed throughout the treatment period and during follow-up according to the National Cancer Institute Common Terminology Criteria for Adverse Events, version 4.0.

PRO analyses

FACT-Ga analysis was done for patients with PD-L1 CPS ≥ 5 and all randomly assigned patients who had an assessment at baseline (day 1, assessment before administration of treatment on day of first dose) and at least one subsequent assessment while on treatment. The questionnaire completion rate, defined as the proportion of questionnaires actually received out of the expected number, was calculated and summarized at each assessment point using descriptive statistics. Mean score and mean change from baseline for the FACT-Ga scale were estimated using mixed model for repeated measures. The change from baseline was modelled as a linear function of treatment groups; trial assessment; baseline score; trial stratification factors; interaction terms between treatment group and trial assessment; interaction terms between baseline score and trial assessment; and any potential confounders. A clinically meaningful difference was defined as a 15.1 or greater change from baseline in FACT-Ga total score³¹. The *P*-value for the difference in least squares means was computed as the two-tailed probability using the *t* distribution. No adjustments were made for multiple comparisons. In addition, treatment burden was assessed by the individual GP5 item of the FACT-Ga. The GP5 item reads, "I am bothered by side effects of treatment." Frequencies and percentages of the GP5 item question responses ('not at all', 'a little bit', 'somewhat', 'quite a bit' and 'very much') were tabulated at each assessment point with ten or more study subjects in each group.

Statistical analyses

Patients concurrently randomized to the nivolumab-plus-chemotherapy versus chemotherapy groups and the nivolumab-plus-ipilimumab versus chemotherapy groups were included in the respective final overall survival analyses. For the comparison of nivolumab plus chemotherapy and chemotherapy, patients randomized to chemotherapy before the nivolumab-plus-chemotherapy arm was introduced were not included in the analysis. For the comparison of nivolumab plus ipilimumab and chemotherapy, patients randomized to chemotherapy after the closure of nivolumab-plus-ipilimumab arm were not included in the analysis.

For nivolumab plus ipilimumab versus chemotherapy, the analysis of overall survival was pre-planned at a minimum follow-up of approximately 36 months, which corresponded with the pre-planned final analysis of overall survival for nivolumab plus chemotherapy versus chemotherapy at a 24-month minimum follow-up. Since the dual primary endpoints for nivolumab-plus-chemotherapy versus chemotherapy groups were met⁵, the secondary endpoint of overall survival in the nivolumab-plus-ipilimumab versus chemotherapy groups was hierarchically tested in patients with PD-L1 CPS ≥ 5 followed by all randomized patients. If overall survival in the nivolumab-plus-ipilimumab versus chemotherapy groups met the criteria for statistical significance, the secondary endpoint of TTSD in the nivolumab-plus-ipilimumab versus chemotherapy groups was planned to be hierarchically tested in patients with PD-L1 CPS ≥ 5 followed by all randomized patients. In the interim analysis, two-sided alpha levels of 0.02 and 0.03 (type I error) were allocated to the dual primary endpoints of PFS and overall survival, respectively. The comparison of secondary endpoints of overall survival and TTSD for nivolumab plus ipilimumab versus chemotherapy inherited alpha independently from the two primary endpoints (fraction of α transmitted = 0.035) and was tested once after 36 months in patients with PD-L1 CPS ≥ 5 followed by all randomized patients.

The statistical power estimation for the comparison of primary endpoints for the nivolumab-plus-chemotherapy versus the chemotherapy groups has been described previously⁵. Sample size calculations of the primary endpoints were based on simulations in East software, version 6.4.1. (Cytel). The prevalence of patients with PD-L1 CPS ≥ 5 was assumed to be 35% of all randomized patients, based on limited available data^{14,24,32}, with 285 patients estimated in the nivolumab-plus-ipilimumab versus chemotherapy analysis. Based on new information from the CheckMate 649 trial, this PD-L1 CPS ≥ 5 prevalence was revised to 60% of all randomized patients, with 489 patients estimated in the nivolumab-plus-ipilimumab versus chemotherapy analysis. For overall survival, the hazard ratio was modelled as a four-piece hazard ratio with an average of 0.7. With 36-month minimum follow-up, it was expected that the 411 events would provide 93% power.

Median PFS, overall survival, and duration of response were estimated using Kaplan–Meier methods, and the corresponding two-sided 95% confidence intervals were calculated using the log–log transformation method. The stratified Cox proportional hazards regression model, with the randomization factors as the stratification factors and treatment group as a single covariate, was used to assess differences between treatment groups in overall survival and PFS. An O'Brien and Fleming α -spending function was employed to determine the hazard ratio for overall survival, using a stratified Cox proportional hazards model. Stratification factors recorded in an interactive web response system were used in the analysis.

The proportion of patients with an objective response and corresponding two-sided 95% confidence intervals were calculated using the Clopper–Pearson method.

Statistical analyses were performed using SAS software, version 9.4 (SAS Institute, Cary, NC).

Reporting summary

Further information on research design is available in the Nature Research Reporting Summary linked to this paper.

Data availability

The Bristol Myers Squibb data sharing policy (<https://www.bms.com/researchers-and-partners/independent-research/data-sharing-request-process.html>) is compliant with ICMJE guidelines. Bristol Myers Squibb will honour legitimate requests for clinical trial data from qualified researchers. Data will be shared with external researchers whose proposed use of the data has been approved. Complete de-identified patient data sets will be eligible for sharing 2 years after completion of the CheckMate 649 study. Before data are released, the researcher(s) must sign a Data Sharing Agreement, after which the de-identified and anonymized datasets can be accessed within a secured portal.

- Garland, S. N. et al. Prospective evaluation of the reliability, validity, and minimally important difference of the functional assessment of cancer therapy-gastric (FACT-Ga) quality-of-life instrument. *Cancer* **117**, 1302–1312 (2011).
- Kulangara, K. et al. Investigation of PD-L1 expression and response to pembrolizumab (pembro) in gastric cancer (GC) and cervical cancer (CC) using combined positive score (CPS) and tumor proportion score (TPS). *J Clin Oncol* **36**, 4065 (2018).

Acknowledgements This study was supported by Bristol Myers Squibb and Ono Pharmaceutical Co., Ltd. We thank the patients and their families who made this study possible, the investigators and the clinical study teams at Bristol Myers Squibb and Ono Pharmaceutical Co., Ltd. for CheckMate 649 study support. Analysis of patient-reported outcomes was supported by S. Blum (Bristol Myers Squibb), and S. Hunter, E. Davenport and J. Wang (RTI Health Solutions). We thank Dako (an Agilent Technologies company) for collaborative development of the PD-L1 IHC 28-8 pharmDx assay. Professional medical writing and editorial assistance were provided by P. Dang (Parexel), funded by Bristol Myers Squibb.

Author contributions K.S., J.A.A., M.M., M. Lei, V.P., M. Li and Y.Y.J. contributed to the conception and design of the study in collaboration with Bristol Myers Squibb. K.S., J.A.A., M.M., M.G., C.G., L.S., K.Y., L.W., T.S., A.C.B., T.L., M.T., E.E., R.B., T.Z., S.d.A., R.K., R.P.-C., M.S., J.M.C., P.Y., K.F., M.V.K. and Y.Y.J. recruited and/or treated patients and gathered clinical data on efficacy, safety and patient-reported outcomes. M. Li analysed the clinical data, M. Lei performed biomarker analyses, H.X. analysed the PRO data, and V.P. conducted statistical analyses. M. Lei, V.P., M. Li, H.X. and K.K. verified the data. All authors interpreted the data. All authors had access to all the data in the study, participated in developing or reviewing the manuscript and provided final approval to submit the manuscript for publication.

Competing interests K.S. reports receiving personal fees for advisory roles from AbbVie, Boehringer Ingelheim, Bristol Myers Squibb, GlaxoSmithKline, Novartis, Pfizer, and Takeda; receiving advisory role or research funding from Astellas Pharma, Eli Lilly, Ono Pharmaceutical, Merck Pharmaceutical, and Taiho Pharmaceutical; receiving honoraria (lecture fees) from AbbVie, Novartis, and Yakult Honsha; and receiving research funding from Amgen, Chugai Pharma, Daiichi Sankyo, Dainippon Sumitomo Pharma, Medi Science, and Eisai, outside the submitted work. J.A.A. reports receiving research grants from Amgen, Astellas Pharma, Bristol Myers Squibb, Daiichi Sankyo, Delta-Fly Pharma, Gilead Sciences, Lilly/ImClone, Merck, Novartis, ProLynx, Roche/Genentech, Taiho Pharmaceutical, Takeda, and Zymeworks; serving as a consultant or in an advisory role for American Cancer Society, BeiGene, Bristol Myers Squibb, Insys Therapeutics, Merck, and Vaccinogen; receiving royalties from or holding patents and other intellectual property with Amgen, Bristol Myers Squibb, Genentech, Lilly, Medimmune, Merck, Roche, and Taiho Pharmaceutical; and receiving honoraria from Acrotech BioPharma, Aduro Biotech, Amgen, Astellas Pharma, BeiGene, Boehringer Ingelheim, Bristol Myers Squibb, Daiichi Sankyo, DAVA Pharmaceuticals, Fresenius Kabi, Gilead Sciences, Grail, Lilly, Merck, Novartis, Servier, and Zymeworks, outside the submitted work. M.M. reports receiving research grants from Amgen, Leap Therapeutics, Merck Serono, and Merck Sharp & Dohme; serving as a consultant or in an advisory role for Amgen, Bayer, Beigene, Bristol Myers Squibb, Lilly, Merck Serono, Merck Sharp & Dohme, Pfizer, Roche, Servier, and Taiho Pharmaceutical; receiving travel and accommodation expenses from American Society of Clinical Oncology, Amgen, Bayer, European Society for Medical Oncology, German Cancer Society, Merck Serono, Merck Sharp & Dohme, and Roche; and receiving honoraria from Amgen, AstraZeneca/Medimmune, Bristol Myers Squibb, Merck Serono, Merck Sharp & Dohme Oncology, Roche/Genentech, Pierre Fabre, Sanofi, and Servier, outside the submitted work. M.G. reports receiving research grants from Bristol Myers Squibb and Novartis; receiving speakers' bureau fees from Bayer, Bristol Myers Squibb, and Merck; receiving travel and accommodations expenses from Roche; and serving as a consultant or in an advisory role for Merck Sharp & Dohme and Roche, outside the submitted work. C.G. reports receiving research grants from Bristol Myers Squibb and Merck Sharp & Dohme; receiving speakers' bureau fees from AstraZeneca, Merck Sharp & Dohme, and Novartis; receiving travel and accommodation expenses from Roche; serving as a consultant or in an advisory role for Merck Sharp & Dohme, Novartis, and Roche; and providing expert testimony for AstraZeneca, outside the submitted work. L.S. reports receiving research grants from Beijing Xiantong Biomedical Technology, Qilu Pharmaceutical, ZaiLab Pharmaceutical (Shanghai), Beihai Kangcheng (Beijing) Medical Technology, Jacobio Pharmaceuticals, and Beijing Xiantong Biomedical Technology; receiving consulting fees from Boehringer Ingelheim, Haichuang

Article

Pharmaceutical, Herbour Biomed, Merck, Merck Sharp & Dohme, and Mingji Biopharmaceutical; receiving speakers' fees from CSTONE Pharmaceutical, Hutchison Whampoa, Hengrui, and ZaiLab; and participating on a Data Safety Monitoring Board or Advisory Board for Bristol Myers Squibb, CSTONE Pharmaceutical, Rongchang Pharmaceutical, and ZaiLab, outside the submitted work. K.Y. reports receiving research grants from Boehringer Ingelheim, Bristol Myers Squibb, Chugai Pharma, Daiichi Sankyo, Eisai, Gilead Sciences, Lilly, Merck Sharp & Dohme Oncology, Ono Pharmaceutical, Sanofi, Taiho Pharmaceutical, and Yakult Honsha; receiving speakers' bureau fees from Bristol Myers Squibb Japan, Chugai Pharma, Daiichi Sankyo, Lilly, Merck, Ono Pharmaceutical, Taiho Pharmaceutical, and Takeda; and serving as a consultant or in an advisory role for Bristol Myers Squibb Japan and Daiichi Sankyo, outside the submitted work. L.W. reports receiving research grants from National Cancer Research Institute; receiving speakers' bureau fees from Amgen, Roche, Sanofi, and Servier; and serving in a consulting or advisory role for Amgen and Servier, outside the submitted work. T.S. has no competing interests to disclose. A.B. has no competing interests to disclose. T.L. has no competing interests to disclose. M.T. reports receiving research funding from Celgene; receiving honoraria from Bristol Myers Squibb, Celgene, Eisai, Merck, Pfizer, and Taiho Pharmaceutical; and serving in a consulting or advisory role for Bayer, Bristol Myers Squibb, Celgene, Eisai, Merck, Taiho Pharmaceutical, and Takeda, outside the submitted work. E.E. reports receiving research funding from Bristol Myers Squibb and Zymeworks; serving as a consultant or in an advisory role for Bristol Myers Squibb, Zymeworks, and Adaptimmune; and having an immediate family member employed by Merck, outside the submitted work. R.B. reports serving as a medical adviser for AstraZeneca, Bristol Myers Squibb, Merck Serono, Novartis, and Pfizer; receiving clinical research funding from Bristol Myers Squibb, Merck Sharp & Dohme, Novartis, and Roche; and serving as a speaker for AstraZeneca, Bristol Myers Squibb, Merck, and Pfizer, during the conduct of the study. T.Z. reports serving as a consultant or in an advisory role for Bristol Myers Squibb, Merck Sharp & Dohme, Novartis, and Roche, outside the submitted work. S.d.A. reports receiving honoraria from AstraZeneca, Bristol Myers Squibb, Genentech, Merck Sharp & Dohme, Novartis, and Roche, outside the submitted work. R.K. reports receiving research grants from Amgen, Astellas, AstraZeneca, Athenex, Bristol Myers Squibb, Eli Lilly, Merck Sharp & Dohme, Nektar, Novartis, Pfizer, Roche, and Sanofi; receiving non-financial support from Bristol Myers Squibb,

Merck Sharp & Dohme, Pfizer, and Roche; and receiving personal fees from Astellas, Bristol Myers Squibb, Gador, Merck Sharp & Dohme, Novartis, and Pfizer, outside the submitted work. R.P.-C. has no competing interests to disclose. M.S. reports receiving research funding from Abbvie, Astellas Pharma, AstraZeneca, Bristol Myers Squibb, Eli Lilly, Gilead Sciences, GlaxoSmithKline, Merck Sharp & Dohme, Novartis, Pfizer/EMD Serono, Regeneron, and Roche; and receiving travel, accommodations, and expenses from Bristol Myers Squibb, outside the submitted work. J.M.C. reports receiving research funding to his institution from Abbvie, Merus, Roche, and Bristol Myers Squibb; receiving research funding from Merck, AstraZeneca, Esperas Pharma, Bayer, and Tesaro; receiving consulting fees from Bristol Myers Squibb; receiving an honorarium for advisory board participation from Syros Pharmaceuticals; and receiving travel funding from Bristol Myers Squibb, outside the submitted work. P.Y. has no competing interests to disclose. K.F. has no competing interests to disclose. M.K. reports serving in an advisory role for Bristol Myers Squibb, Merck Sharp & Dohme, Ipsen, Roche, Sandoz, Sanofi, and Servier, outside the submitted work. V.P., M. Lei, H.X., K.K. and M. Li report being employees of Bristol Myers Squibb. Y.Y.J. reports receiving research funding from Bayer, Bristol Myers Squibb, Cycle for Survival, Department of Defense, Fred's Team, Genentech/Roche Lilly, Merck & Co, National Cancer Institute, and Rgenix; serving as a consultant or in an advisory role for Basilea Pharmaceutical, Bayer, Bristol Myers Squibb, Daiichi Sankyo, Imugene, Lilly, Merck, Merck Serono, Michael J Hennessy Associates, Paradigm Medical Communications, Pfizer, Rgenix, Seagen, and Zymeworks; receiving stock options from Rgenix; and nonfinancial relationships with Clinical Care Options, Axis Medical Education, and Research to Practice, outside the submitted work.

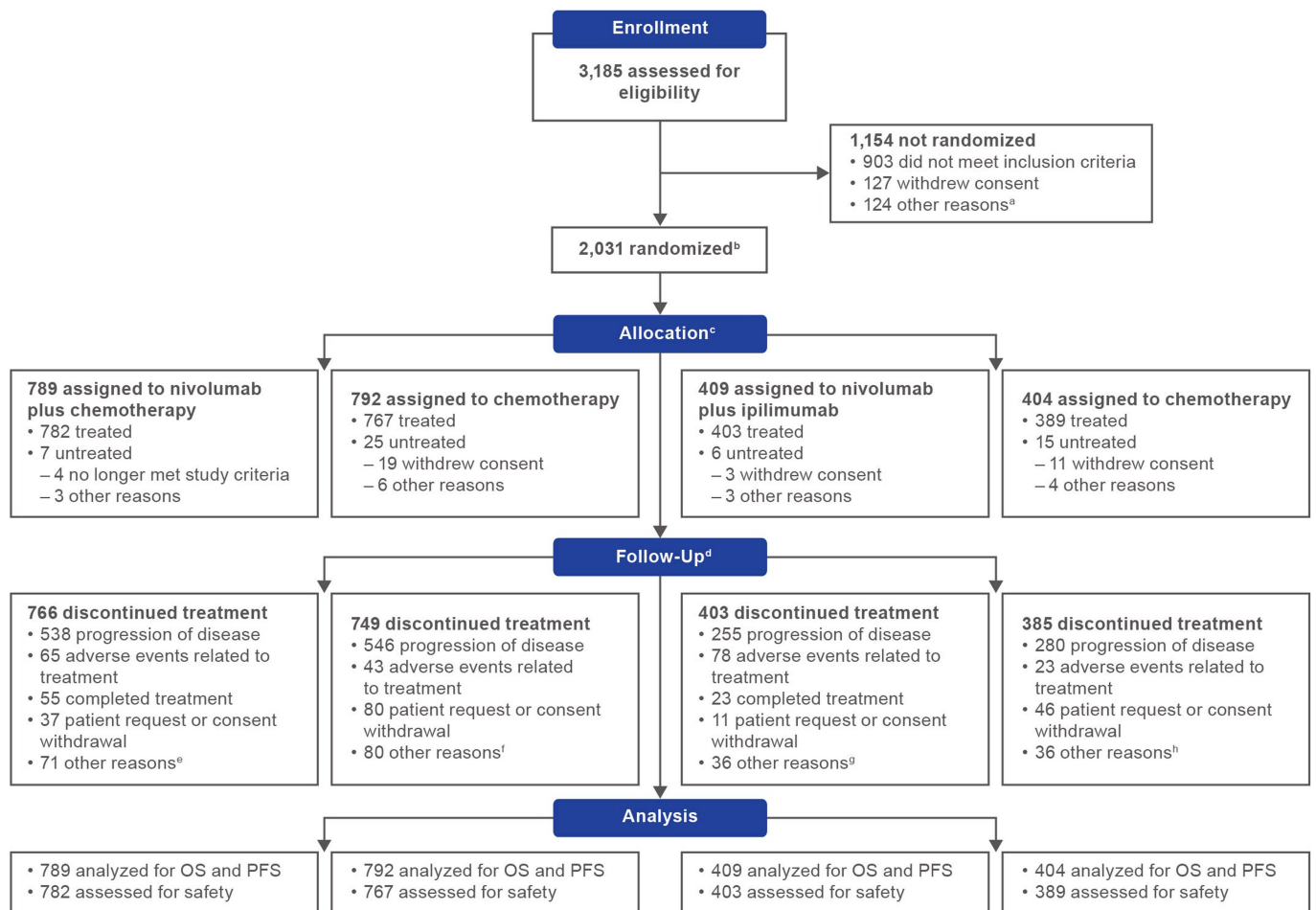
Additional information

Supplementary information The online version contains supplementary material available at <https://doi.org/10.1038/s41586-022-04508-4>.

Correspondence and requests for materials should be addressed to Yelena Y. Janjigian.

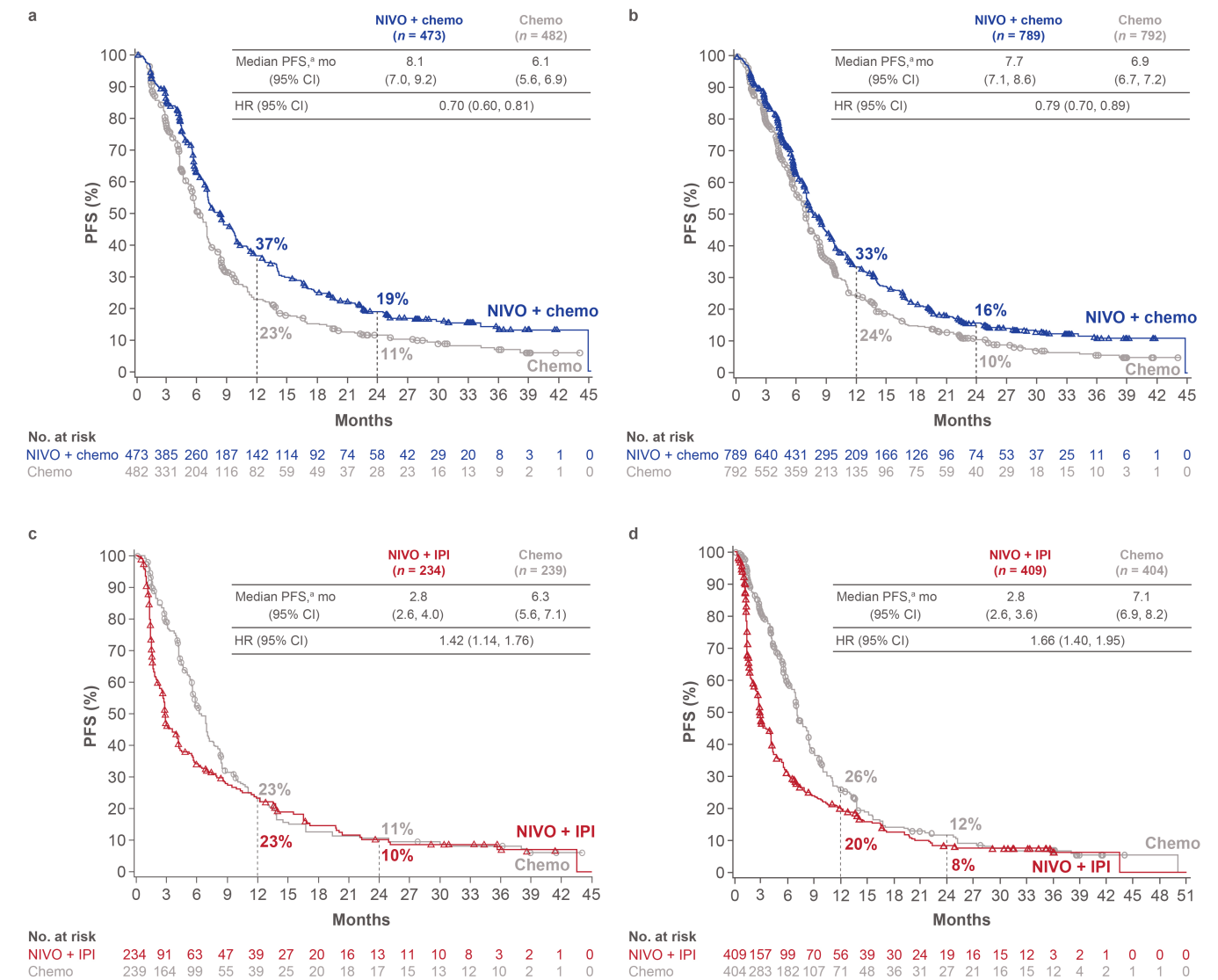
Peer review information *Nature* thanks Sara Lonardi, Florian Lordick and the other, anonymous, reviewers for their contribution to the peer review of this work.

Reprints and permissions information is available at <http://www.nature.com/reprints>.



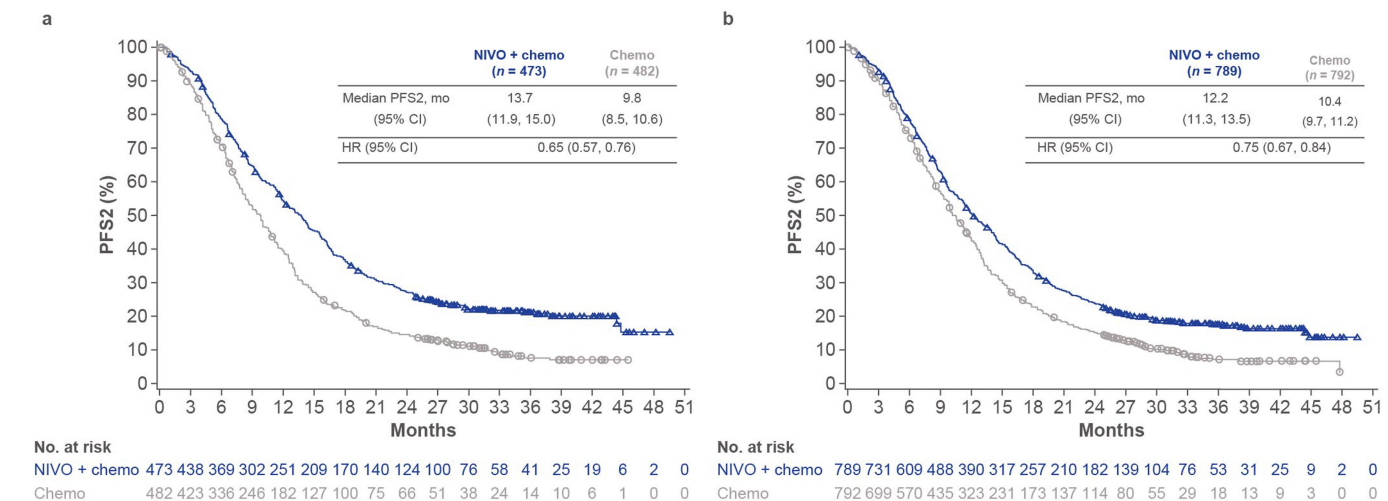
Extended Data Fig. 1 | CONSORT diagram for patient disposition. ^aIncluded death ($n = 36$), adverse events ($n = 24$), poor/noncompliance ($n = 15$), administrative reasons ($n = 5$), pregnancy ($n = 1$) and additional reasons ($n = 43$); ^bIncludes patients concurrently randomized to the nivolumab plus chemotherapy, nivolumab plus ipilimumab, and chemotherapy groups. Relevant protocol deviations were noted in 21 (1%) patients concurrently randomized to nivolumab plus chemotherapy versus chemotherapy: usage of prohibited on-treatment anti-cancer therapy ($n = 12$), baseline ECOG PS > 1 ($n = 5$), incorrect cancer diagnosis ($n = 2$), prohibited prior anti-cancer therapy (at study entry) ($n = 1$) and no baseline (measurable or evaluable) disease ($n = 1$); Relevant protocol deviations were noted in 10 (1%) patients concurrently randomized to nivolumab plus ipilimumab versus chemotherapy: usage of prohibited on-treatment anti-cancer therapy ($n = 5$), incorrect cancer diagnosis ($n = 2$), no baseline PD-L1 result ($n = 2$) and baseline ECOG PS > 1 ($n = 1$); ^c363 patients overlapped between the two chemotherapy groups from the 1:1:1 randomization period; ^dThe median follow-up for survival (time from concurrent randomization to last known date alive or death) was 13.1 months

(range 0.1–49.5) and 11.2 months (range 0.0–47.9) in the nivolumab plus chemotherapy versus chemotherapy groups, respectively, and 11.4 months (range 0.0–52.1) and 11.5 months (range 0.0–52.8) in the nivolumab plus ipilimumab versus chemotherapy groups, respectively; ^eIncluded adverse events unrelated to study treatment ($n = 47$), maximum clinical benefit ($n = 11$), lost to follow-up ($n = 2$), patient no longer met trial criteria ($n = 1$), poor/noncompliance ($n = 1$) and other reasons ($n = 9$); ^fIncluded adverse events unrelated to study treatment ($n = 35$), maximum clinical benefit ($n = 30$), poor/noncompliance ($n = 4$), other reasons ($n = 8$), lost to follow-up ($n = 2$) and death ($n = 1$); ^gIncluded adverse events unrelated to study treatment ($n = 21$), death ($n = 3$), poor/noncompliance ($n = 1$), other reasons ($n = 6$) and not reported ($n = 5$); ^hIncluded adverse events unrelated to study treatment ($n = 15$), maximum clinical benefit ($n = 13$), lost to follow-up ($n = 2$), poor/noncompliance ($n = 2$) and other reasons ($n = 4$). ECOG PS, Eastern Cooperative Oncology Group performance status; OS, overall survival; PD-L1, programmed death ligand 1; PFS, progression-free survival.



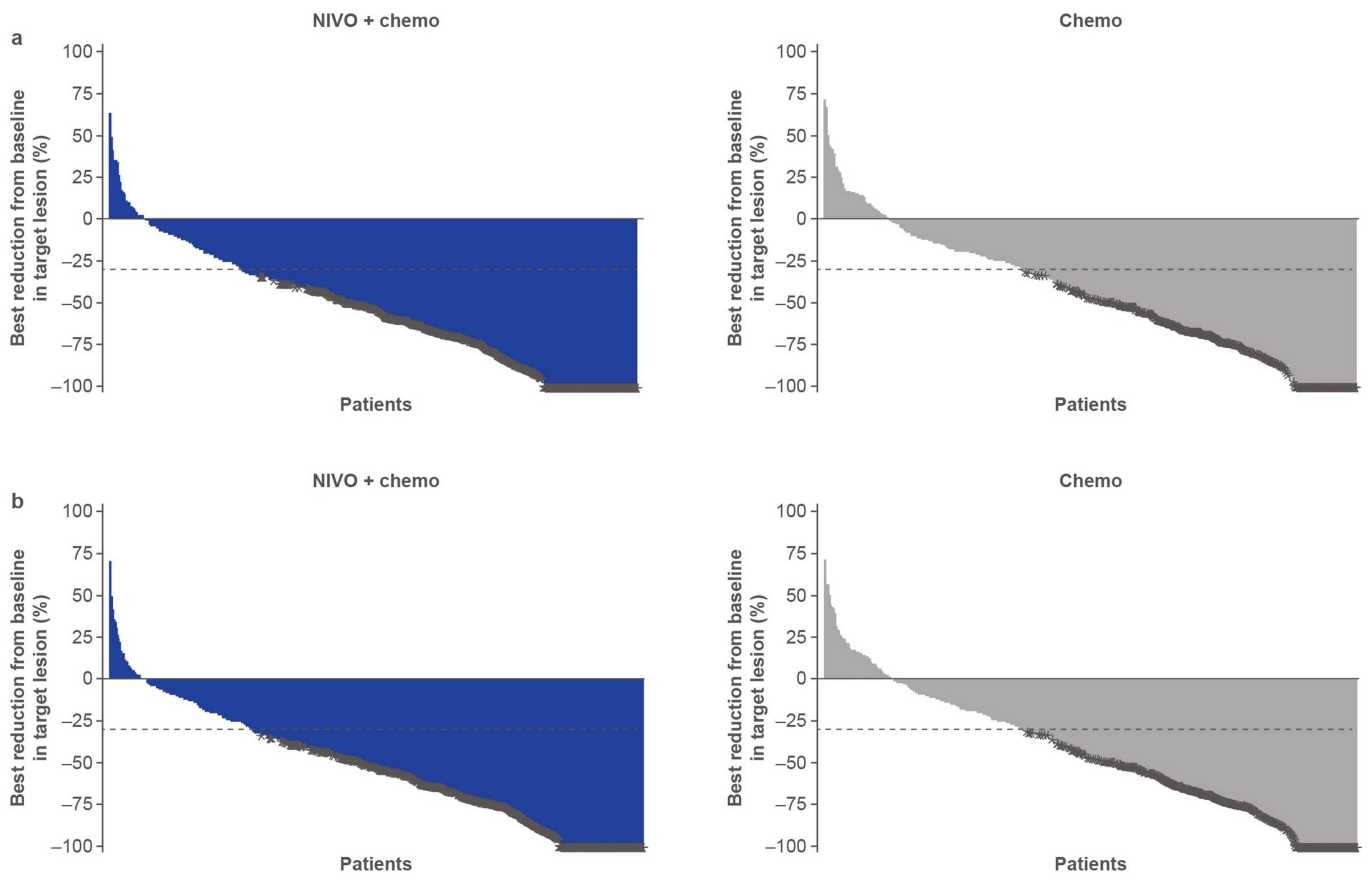
Extended Data Fig. 2 | Kaplan-Meier estimates of progression-free survival. Progression-free survival with nivolumab plus chemotherapy versus chemotherapy in patients with PD-L1 CPS ≥ 5 (a) and in all randomized patients (b). Progression-free survival with nivolumab plus ipilimumab versus chemotherapy in patients with PD-L1 CPS ≥ 5 (c) and in all randomized patients (d). ^aPer BICR.

BICR, blinded independent central review; chemo, chemotherapy; CI, confidence interval; CPS, combined positive score; HR, hazard ratio; IPI, ipilimumab; mo, months; NIVO, nivolumab; PD-L1, programmed death ligand 1; PFS, progression-free survival.



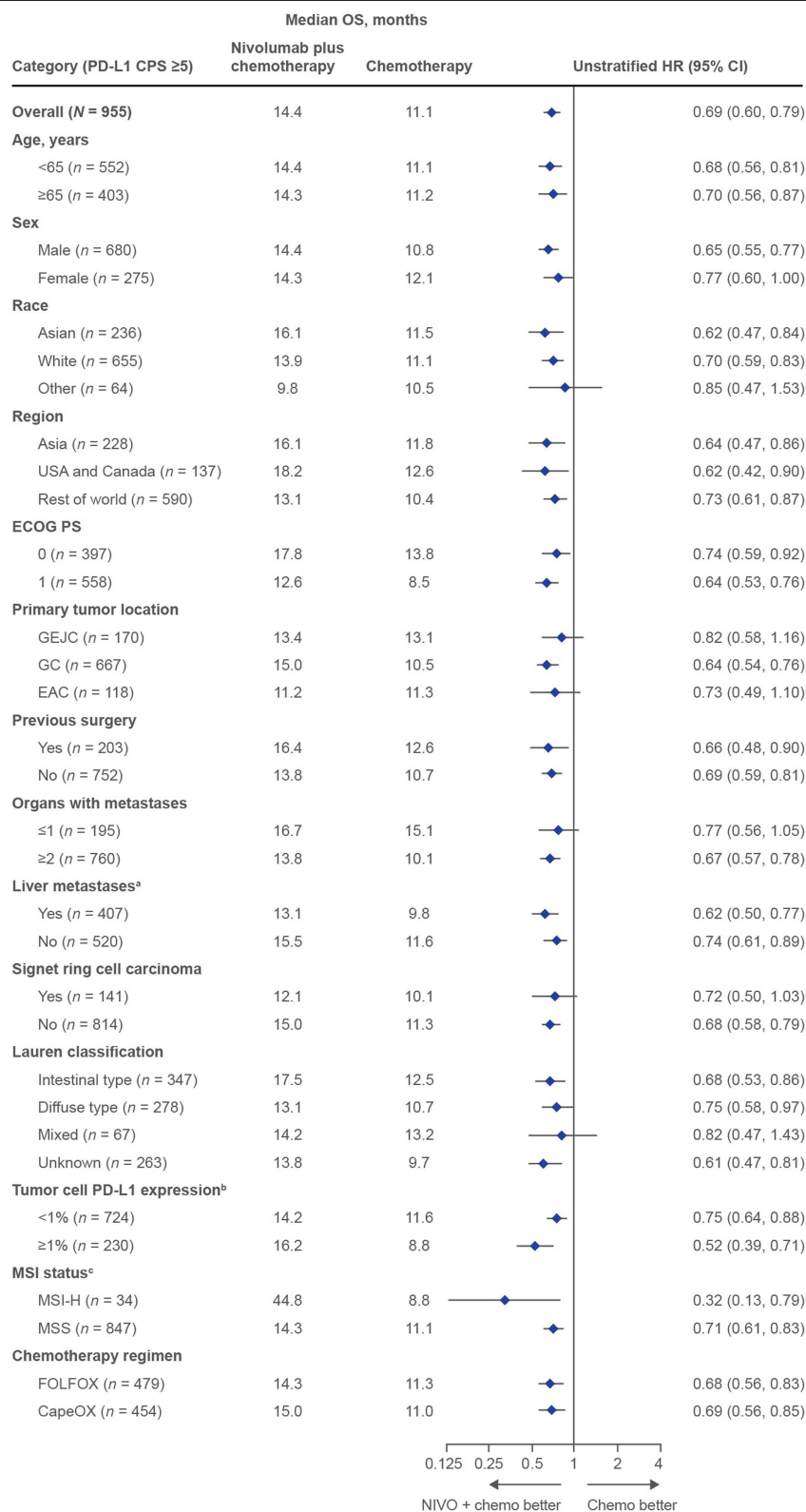
Extended Data Fig. 3 | Kaplan-Meier plot of progression-free survival on subsequent therapy with nivolumab plus chemotherapy versus chemotherapy. a, Patients with PD-L1 CPS \geq 5. b, All randomized patients. Chemo, chemotherapy; CI, confidence interval; CPS, combined positive score;

HR, hazard ratio; mo, months; NIVO, nivolumab; PD-L1, programmed death ligand 1; PFS2, time from randomization to progression after subsequent systemic therapy, initiation of second subsequent systemic therapy, or death, whichever is earlier.



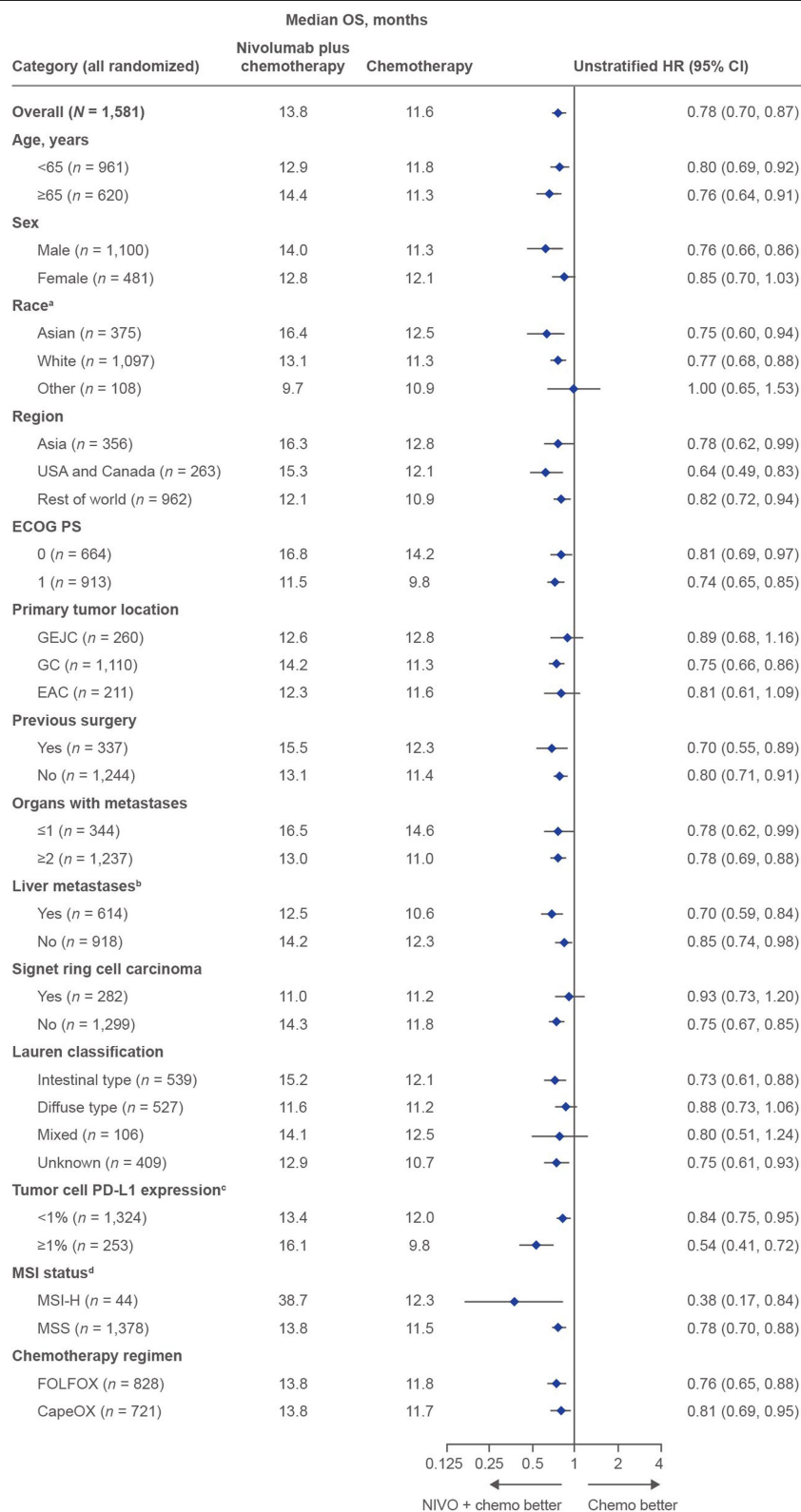
Extended Data Fig. 4 | Waterfall plot of best percentage reduction in tumour burden with nivolumab plus chemotherapy versus chemotherapy. a, Patients with PD-L1 CPS ≥ 5 . b, All randomized patients. Patients who had measurable disease at baseline per BICR and at least one on-treatment tumour assessment. Best reduction is maximum reduction in sum of diameters of target lesions. Horizontal reference line indicates the 30% reduction

consistent with a RECIST v1.1 response. Asterisk symbol represents responders. Blue bars indicate nivolumab plus chemotherapy; grey bars indicate chemotherapy. BICR, blinded independent central review; chemo, chemotherapy; CPS, combined positive score; NIVO, nivolumab; PD-L1, programmed death ligand 1; RECIST, Response Evaluation Criteria in Solid Tumors.



Extended Data Fig. 5 | Forest plot of overall survival in prespecified subgroups with nivolumab plus chemotherapy versus chemotherapy in patients with PD-L1 CPS ≥ 5. ^aNot reported, *n* = 28; ^bUnknown, *n* = 1; ^cInvalid/not reported, *n* = 74. Data are presented as unstratified hazard ratios and 95% CI. CapeOX, capecitabine plus oxaliplatin; chemo, chemotherapy; CI, confidence interval; CNS, central nervous system; CPS, combined positive

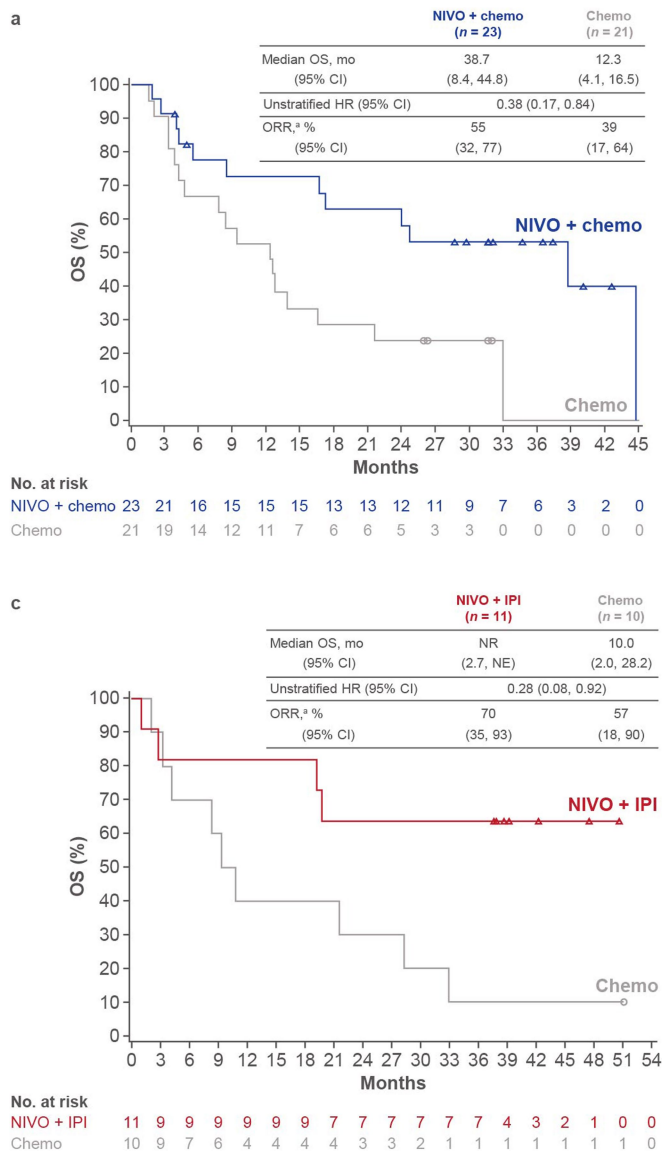
score; EAC, oesophageal adenocarcinoma; ECOG PS, Eastern Cooperative Oncology Group performance status; FOLFOX, 5-fluorouracil plus leucovorin plus oxaliplatin; GC, gastric cancer; GEJC, gastro-oesophageal junction cancer; HR, hazard ratio; MSI, microsatellite instability; MSI-H, microsatellite instability-high; MSS, microsatellite stable; NIVO, nivolumab; OS, overall survival; PD-L1, programmed death ligand 1.



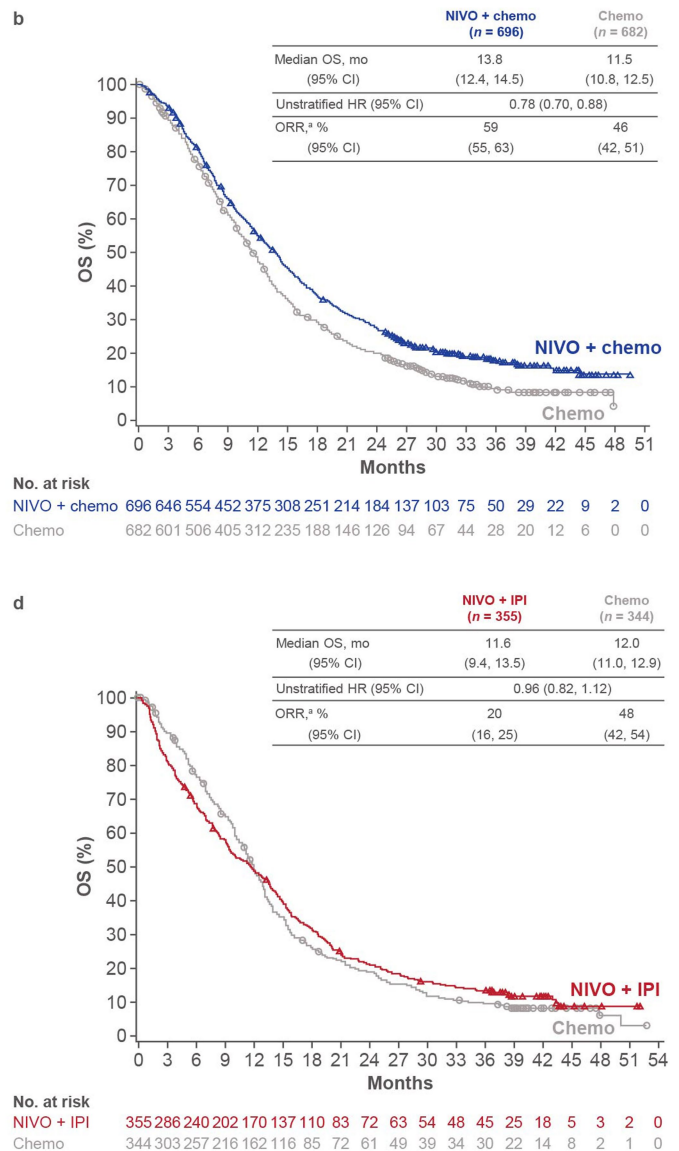
Extended Data Fig. 6 | Forest plot of overall survival in prespecified subgroups with nivolumab plus chemotherapy versus chemotherapy in all randomized patients. ^aNot reported, *n* = 1; ^bNot reported, *n* = 49; ^cUnknown, *n* = 4; ^dInvalid/not reported, *n* = 159. Data are presented as unstratified HRs and 95% CI. CapeOX, capecitabine plus oxaliplatin; chemo, chemotherapy; CI, confidence interval; CNS, central nervous system; CPS,

combined positive score; EAC, oesophageal adenocarcinoma; ECOG PS, Eastern Cooperative Oncology Group performance status; FOLFOX, 5-fluorouracil plus leucovorin plus oxaliplatin; GC, gastric cancer; GEJC, gastro-oesophageal junction cancer; HR, hazard ratio; MSI, microsatellite instability; MSI-H, microsatellite instability-high; MSS, microsatellite stable; NIVO, nivolumab; OS, overall survival; PD-L1, programmed death ligand 1.

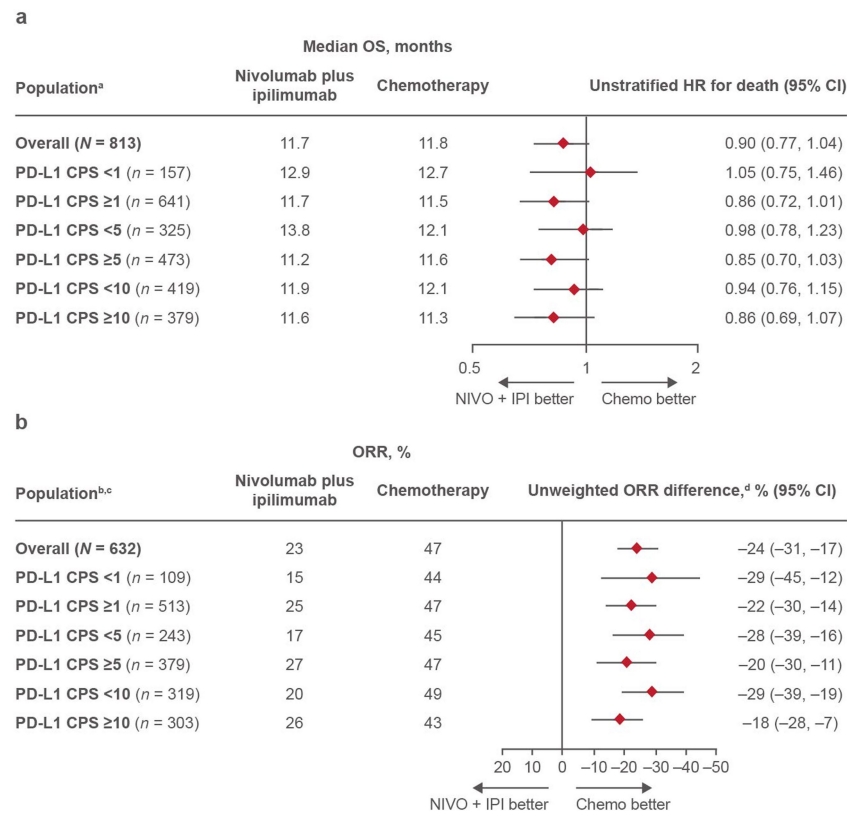
combined positive score; EAC, oesophageal adenocarcinoma; ECOG PS, Eastern Cooperative Oncology Group performance status; FOLFOX, 5-fluorouracil plus leucovorin plus oxaliplatin; GC, gastric cancer; GEJC, gastro-oesophageal junction cancer; HR, hazard ratio; MSI, microsatellite instability; MSI-H, microsatellite instability-high; MSS, microsatellite stable; NIVO, nivolumab; OS, overall survival; PD-L1, programmed death ligand 1.



Extended Data Fig. 7 | Kaplan-Meier estimates of overall survival and objective response rate by microsatellite instability status in all randomized patients. Overall survival with nivolumab plus chemotherapy in patients with MSI-H tumours (**a**) and those with MSS tumours (**b**). Overall survival with nivolumab plus ipilimumab in patients with MSI-H tumours (**c**) and those with MSS tumours (**d**). ^aRandomized patients who had target

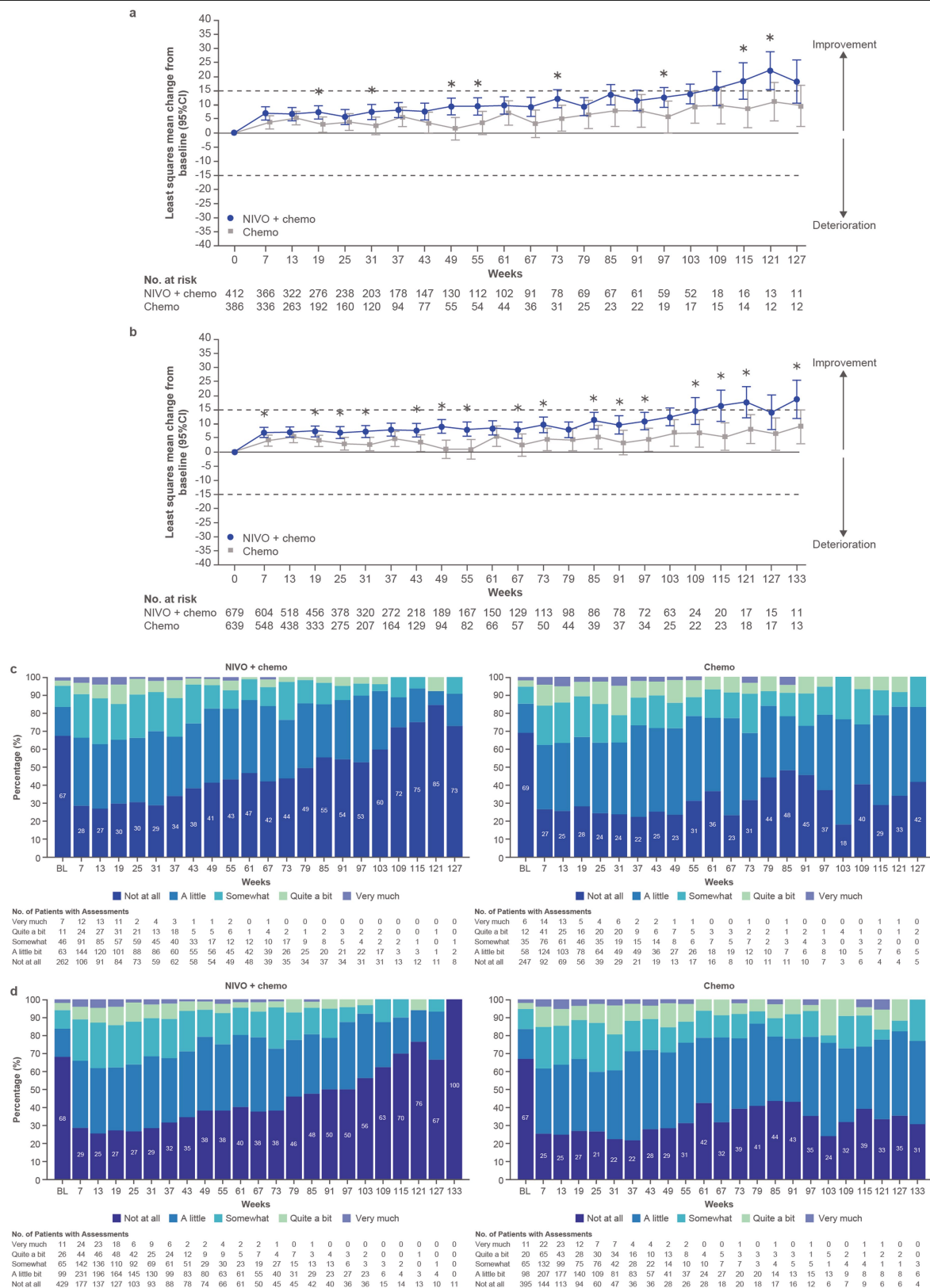


lesion measurements at baseline per BICR assessment were **a**, NIVO + chemo, $n = 20$; Chemo, $n = 18$; **b**, NIVO + chemo, $n = 535$; Chemo, $n = 533$; **c**, Patients with MSI-H: NIVO + IPI, $n = 10$; Chemo, $n = 7$. **d**, NIVO + IPI, $n = 292$; Chemo, $n = 257$. Chemo, chemotherapy; CI, confidence interval; HR, hazard ratio; MSI-H, microsatellite instability-high; MSS, microsatellite stable; NIVO, nivolumab; ORR, objective response rate; OS, overall survival.



Extended Data Fig. 8 | Forest plot of efficacy outcomes by PD-L1 CPS with nivolumab plus ipilimumab versus chemotherapy. a, Overall survival. Data are presented as unstratified HRs and 95% CI. b, Objective response rate. ^aPD-L1 CPS expression indeterminate/not evaluable/not reported, *n* = 15; ^bRandomized patients who had target lesion measurements at baseline, per blinded independent central review assessment; ^cPD-L1 CPS expression

indeterminate/not evaluable/not reported, *n* = 10; ^dPercentages may not reflect an exact difference due to rounding. Data are presented as unweighted ORR differences and 95% CI. Chemo, chemotherapy; CI, confidence interval; CPS, combined positive score; HR, hazard ratio; IPI, ipilimumab; NIVO, nivolumab; ORR, objective response rate; OS, overall survival; PD-L1, programmed death ligand 1.



Extended Data Fig. 9 | See next page for caption.

Extended Data Fig. 9 | Patient-reported outcomes. Least squares mean (95% CI) change from baseline in FACT-Ga total score with nivolumab plus chemotherapy versus chemotherapy in patients with PD-L1 CPS \geq 5 (nivolumab plus chemotherapy, $n = 412$; chemotherapy, $n = 386$) (**a**) and in all randomized patients (nivolumab plus chemotherapy, $n = 679$; chemotherapy, $n = 639$) (**b**). Data in panels **a** and **b** are presented as least squares mean change from baseline and 95% CI. Top and bottom dashed lines indicate minimally important difference in score. The primary meaningful change threshold is 15.1. The P -value for the difference in least squares means was computed as the two-tailed probability using the t distribution. No adjustments were made for multiple comparisons. * $P < 0.05$; in patients with PD-L1 CPS \geq 5, P -value was 0.022 at week

19, 0.024 at week 31, 0.002 at week 49, 0.028 at week 55, 0.015 at week 73, 0.041 at week 97, 0.039 at week 115, and 0.025 at week 121. In all randomized patients, P -value was 0.026 at week 7, 0.020 at week 19, 0.012 at week 25, 0.006 at week 31, 0.025 at week 43, <0.001 at week 49, 0.002 at week 55, 0.037 at week 67, 0.030 at week 73, 0.033 at week 85, 0.028 at week 91, 0.012 at week 97, 0.024 at week 109, 0.004 at week 115, 0.013 at week 121, and 0.039 at week 133; not formally tested. FACT-Ga GP5 ("I am bothered by side effects of treatment") item values in patients with PD-L1 CPS \geq 5 (**c**) and in all randomized patients (**d**). Chemo, chemotherapy; CPS, combined positive score; FACT-Ga, Functional Assessment of Cancer Therapy-Gastric; NIVO, nivolumab; PD-L1, programmed death ligand 1.

Extended Data Table 1 | Response per BICR

| | PD-L1 CPS ≥5 | | All randomized | |
|---|---|--|---|--|
| Variable | Nivolumab plus chemotherapy (<i>n</i> = 378) ^a | Chemotherapy (<i>n</i> = 390) ^a | Nivolumab plus chemotherapy (<i>n</i> = 603) ^a | Chemotherapy (<i>n</i> = 607) ^a |
| Objective response rate, <i>n</i> (%) | 226 (60) | 176 (45) | 350 (58) | 279 (46) |
| 95% CI | 55, 65 | 40, 50 | 54, 62 | 42, 50 |
| Best overall response, <i>n</i> (%) ^b | | | | |
| Complete response | 49 (13) | 26 (7) | 65 (11) | 38 (6) |
| Partial response | 177 (47) | 150 (38) | 285 (47) | 241 (40) |
| Stable disease | 105 (28) | 132 (34) | 172 (29) | 200 (33) |
| Progressive disease | 26 (7) | 42 (11) | 41 (7) | 62 (10) |
| Not evaluable | 21 (6) | 40 (10) | 40 (7) | 66 (11) |
| Median time to response (range), months ^c | 1.5 (0.8–10.2) | 1.4 (1.0–13.7) | 1.5 (0.8–10.9) | 1.5 (0.6–13.7) |
| Median duration of response (95% CI), months ^c | 9.7 (8.2, 12.4) | 7.0 (5.6, 7.9) | 8.5 (7.7, 10.2) | 6.9 (5.8, 7.2) |
| Patients with ongoing response, <i>n</i> (%) ^c | 29 (13) | 10 (6) | 39 (11) | 11 (4) |
| Patients with duration of response ^c | | | | |
| ≥12 months, % (95% CI) | 44 (37, 51) | 30 (23, 38) | 41 (36, 47) | 28 (23, 34) |
| Variable | Nivolumab plus ipilimumab (<i>n</i> = 196) ^a | Chemotherapy (<i>n</i> = 183) ^a | Nivolumab plus ipilimumab (<i>n</i> = 333) ^a | Chemotherapy (<i>n</i> = 299) ^a |
| Objective response rate, <i>n</i> (%) | 52 (27) | 86 (47) | 76 (23) | 141 (47) |
| 95% CI | 20, 33 | 40, 54 | 18, 28 | 41, 53 |
| Best overall response, <i>n</i> (%) ^b | | | | |
| Complete response | 10 (5) | 15 (8) | 19 (6) | 23 (8) |
| Partial response | 42 (21) | 71 (39) | 57 (17) | 118 (39) |
| Stable disease | 52 (27) | 64 (35) | 90 (27) | 103 (34) |
| Progressive disease | 63 (32) | 18 (10) | 112 (34) | 26 (9) |
| Not evaluable | 29 (15) | 15 (8) | 55 (16) | 29 (10) |
| Median time to response (range), months ^c | 1.5 (1.0–13.9) | 1.45 (1.0–5.6) | 1.5 (1.0–13.9) | 1.5 (0.6–7.1) |
| Median duration of response (95% CI), months ^c | 13.2 (8.3, 18.3) | 6.9 (5.2, 7.6) | 13.8 (9.4, 17.7) | 6.8 (5.6, 7.2) |
| Patients with ongoing response, <i>n</i> (%) ^c | 3 (6) | 4 (5) | 6 (8) | 4 (3) |
| Patients with duration of response ^c | | | | |
| ≥12 months, % (95% CI) | 53 (38, 67) | 27 (17, 37) | 55 (42, 66) | 27 (20, 36) |

^aRandomized patients who had target lesion measurements at baseline, per BICR assessment; ^bPercentages may not add up to 100% because of rounding; ^cEvaluated in patients who had an objective response. BICR, blinded independent central review; CI, confidence interval; CPS, combined positive score; PD-L1, programmed death ligand 1.

Reporting Summary

Nature Portfolio wishes to improve the reproducibility of the work that we publish. This form provides structure for consistency and transparency in reporting. For further information on Nature Portfolio policies, see our [Editorial Policies](#) and the [Editorial Policy Checklist](#).

Statistics

For all statistical analyses, confirm that the following items are present in the figure legend, table legend, main text, or Methods section.

n/a Confirmed

- ☐ ☒ The exact sample size (n) for each experimental group/condition, given as a discrete number and unit of measurement
- ☒ ☐ A statement on whether measurements were taken from distinct samples or whether the same sample was measured repeatedly
- ☐ ☒ The statistical test(s) used AND whether they are one- or two-sided
Only common tests should be described solely by name; describe more complex techniques in the Methods section.
- ☒ ☐ A description of all covariates tested
- ☐ ☒ A description of any assumptions or corrections, such as tests of normality and adjustment for multiple comparisons
- ☐ ☒ A full description of the statistical parameters including central tendency (e.g. means) or other basic estimates (e.g. regression coefficient) AND variation (e.g. standard deviation) or associated estimates of uncertainty (e.g. confidence intervals)
- ☐ ☒ For null hypothesis testing, the test statistic (e.g. F , t , r) with confidence intervals, effect sizes, degrees of freedom and P value noted
Give P values as exact values whenever suitable.
- ☒ ☐ For Bayesian analysis, information on the choice of priors and Markov chain Monte Carlo settings
- ☐ ☒ For hierarchical and complex designs, identification of the appropriate level for tests and full reporting of outcomes
- ☒ ☐ Estimates of effect sizes (e.g. Cohen's d , Pearson's r), indicating how they were calculated

Our web collection on [statistics for biologists](#) contains articles on many of the points above.

Software and code

Policy information about [availability of computer code](#)

Data collection

Sample size calculations of the primary endpoints were based on simulations in East software, version 6.4.1. Eligible patients were randomized using interactive web response technology (block sizes of six) and assigned a unique patient number. All observations and other data pertinent to the investigation on each individual treated or entered as a control in the investigation were recorded on (electronic) case report forms. De-identified patient data was analyzed by the sponsor. Clinical data was entered into the Oracle Clinical database (TAO, Trial Access Online) through completion of the eCRF by clinical trial sites and through external data loading in the case of vendor data (eg, PD L1 CPS data). Separately, BICR data from BioClinica was loaded directly into the statistical computing environment (UNIX, Linux) for analysis purposes.

Data analysis

Overall tumor burden and measurable disease were assessed using Radiological Evaluation Criteria in Solid Tumors version 1.1 (RECIST CRITERIA 1.1). Statistical analyses were performed using SAS software, version 9.4 (SAS Institute, Cary, NC).

For manuscripts utilizing custom algorithms or software that are central to the research but not yet described in published literature, software must be made available to editors and reviewers. We strongly encourage code deposition in a community repository (e.g. GitHub). See the Nature Portfolio [guidelines for submitting code & software](#) for further information.

Data

Policy information about [availability of data](#)

All manuscripts must include a [data availability statement](#). This statement should provide the following information, where applicable:

- Accession codes, unique identifiers, or web links for publicly available datasets
- A description of any restrictions on data availability
- For clinical datasets or third party data, please ensure that the statement adheres to our [policy](#)

The Bristol Myers Squibb data sharing policy can be found online and is compliant with ICMJE guidelines. Bristol Myers Squibb will honor legitimate requests for clinical trial data from qualified researchers. Data will be shared with external researchers whose proposed use of the data has been approved. Complete de-identified patient data sets will be eligible for sharing 2 years after completion of the CheckMate 649 study. Before data are released, the researcher(s) must sign a Data Sharing Agreement, after which the de-identified and anonymised datasets can be accessed within a secured portal. For the Bristol Myers Squibb policy on data sharing, see <https://www.bms.com/researchers-and-partners/independent-research/data-sharing-request-process.html>.

Field-specific reporting

Please select the one below that is the best fit for your research. If you are not sure, read the appropriate sections before making your selection.

- ☒ Life sciences ☐ Behavioural & social sciences ☐ Ecological, evolutionary & environmental sciences

For a reference copy of the document with all sections, see [nature.com/documents/nr-reporting-summary-flat.pdf](https://www.nature.com/documents/nr-reporting-summary-flat.pdf)

Life sciences study design

All studies must disclose on these points even when the disclosure is negative.

| | |
|-----------------|--|
| Sample size | Sample size calculations of the primary endpoints were based on simulations in East software, version 6.4.1. The statistical power estimation for the comparison of primary endpoints for the nivolumab plus chemotherapy versus the chemotherapy groups has been described previously in Janjigian, Y. Y. et al. Lancet 398, 27-40 (2021). The prevalence of patients with PD-L1 CPS ≥ 5 was assumed to be 35% of all randomized patients, based on limited available data, with 285 patients estimated in the nivolumab plus ipilimumab versus chemotherapy analysis. Based on new information from the CheckMate 649 trial, this PD-L1 CPS ≥ 5 prevalence was revised to 60% of all randomized patients, with 489 patients estimated in the nivolumab plus ipilimumab versus chemotherapy analysis. For OS, the HR was modeled as a four-piece HR with an average of 0.7. With a minimum follow-up of 36 months, it was expected that the 411 events would provide 93% power. |
| Data exclusions | No data were excluded from the analyses. |
| Replication | Not applicable as this paper presents results of a clinical trial. |
| Randomization | Randomization was done using interactive web response technology (block sizes of six) and stratified according to tumor cell PD-L1 status ($\geq 1\%$ vs $<1\%$ or indeterminate), region (Asia vs USA and Canada vs rest of world), Eastern Cooperative Oncology Group performance status (0 vs 1), and type of chemotherapy (CapeOX vs FOLFOX). |
| Blinding | Not applicable - open label study |

Reporting for specific materials, systems and methods

We require information from authors about some types of materials, experimental systems and methods used in many studies. Here, indicate whether each material, system or method listed is relevant to your study. If you are not sure if a list item applies to your research, read the appropriate section before selecting a response.

Materials & experimental systems

| n/a | Involved in the study |
|-------------------------------------|---|
| <input checked="" type="checkbox"/> | <input type="checkbox"/> Antibodies |
| <input checked="" type="checkbox"/> | <input type="checkbox"/> Eukaryotic cell lines |
| <input checked="" type="checkbox"/> | <input type="checkbox"/> Palaeontology and archaeology |
| <input checked="" type="checkbox"/> | <input type="checkbox"/> Animals and other organisms |
| <input type="checkbox"/> | <input checked="" type="checkbox"/> Human research participants |
| <input type="checkbox"/> | <input checked="" type="checkbox"/> Clinical data |
| <input checked="" type="checkbox"/> | <input type="checkbox"/> Dual use research of concern |

Methods

| n/a | Involved in the study |
|-------------------------------------|---|
| <input checked="" type="checkbox"/> | <input type="checkbox"/> ChIP-seq |
| <input checked="" type="checkbox"/> | <input type="checkbox"/> Flow cytometry |
| <input checked="" type="checkbox"/> | <input type="checkbox"/> MRI-based neuroimaging |

Human research participants

Policy information about [studies involving human research participants](#)

| | |
|----------------------------|--|
| Population characteristics | Males and females ≥ 18 years of age with unresectable advanced or metastatic gastric, GEJ or esophageal adenocarcinoma were enrolled, regardless of PD-L1 expression. Patients with known HER2-positive status were excluded, and prior systemic therapy for metastatic disease was not allowed. Randomization was stratified according to tumor cell PD-L1 status ($\geq 1\%$ vs $<1\%$ or indeterminate), region (Asia vs USA and Canada vs rest of world), Eastern Cooperative Oncology Group performance status (0 vs 1), and type of chemotherapy (CapeOX vs FOLFOX). Please see the manuscript methods section and protocol for additional details. |
| Recruitment | CheckMate 649 (NCT02872116) was conducted at 175 hospitals and cancer centers in 29 countries across Asia, Australia, Europe, North America, and South America. Overall, 3,185 patients were enrolled, and 2,031 were randomized; of these, 1,581 patients were concurrently randomized to nivolumab plus chemotherapy (789 patients) or chemotherapy (792 patients) (from April 2017 to May 2019), and 813 were concurrently randomized to nivolumab plus ipilimumab (409 patients) or chemotherapy (404 patients) (from October 2016 to June 2018). Once informed consent obtained from a prospective patient, they were enrolled using the Interactive Response Technology (IRT) system. After all eligibility criteria were met, the decision of chemotherapy regimen made, and PD-L1 test results from central lab was available in the IRT (both the site and the BMS study team remain blinded to the result), the site could conduct the IRT for randomization. The randomization was a block randomization stratified by region thus, it is unlikely that patient or investigator could bias treatment assignment. The investigator and patient were also blinded to PD-L1 CPS results. |
| Ethics oversight | The trial was conducted according to Good Clinical Practice guidelines developed by the International Council for Harmonisation and in compliance with the trial protocol. The trial protocol was approved by the institutional review boards or independent ethics committees at each site (NCT02872116). All patients provided written informed consent prior to trial participation per Declaration of Helsinki principles. |

Note that full information on the approval of the study protocol must also be provided in the manuscript.

Clinical data

Policy information about [clinical studies](#)

All manuscripts should comply with the ICMJE [guidelines for publication of clinical research](#) and a completed [CONSORT checklist](#) must be included with all submissions.

| | |
|-----------------------------|---|
| Clinical trial registration | NCT02872116 |
| Study protocol | The study protocol and statistical analysis plan has been submitted as a supplemental file along with the manuscript. Proprietary information has been redacted in these documents as allowed by journal guidelines |
| Data collection | CheckMate 649 was conducted at 175 hospitals and cancer centers in 29 countries across Asia, Australia, Europe, North America, and South America. Patients were enrolled and randomized across the 3 treatment groups; randomization to nivolumab plus chemotherapy or chemotherapy occurred from April 2017 to May 2019 and to nivolumab plus ipilimumab or chemotherapy from October 2016 to June 2018. Data cutoff was May 27, 2021. |
| Outcomes | The dual primary endpoints were OS (time from randomization to death) and PFS (time from randomization to the date of the first documented tumor progression (by blinded independent central review (BICR) per RECIST, version 1.1) or death) in the nivolumab plus chemotherapy versus chemotherapy groups in patients with PD-L1 CPS ≥ 5 . Secondary endpoints that were hierarchically tested if the primary endpoints were met were OS in patients with PD-L1 CPS ≥ 1 and in all randomized patients in the nivolumab plus chemotherapy versus chemotherapy group and OS and TTSD in patients with PD-L1 CPS ≥ 5 and in all randomized patients in the nivolumab plus ipilimumab versus chemotherapy group. Please see the manuscript methods section and protocol for additional details. |